



# ARMORLITE

## **INSTALLATION INSTRUCTIONS**

---

2021- Current Bronco 4 Door  
**Floor Kit**



[GoArmorlite.com](http://GoArmorlite.com)

If you have trouble at any point refer to our website support section, full install videos, and tip and tricks are available. [GoArmorlite.com](http://GoArmorlite.com)

If you continue having trouble, email us at [orders@goarmorlite.com](mailto:orders@goarmorlite.com)

## SUGGESTED TOOLS

Gloves  
Small flathead screwdriver  
8 mm socket  
13mm socket or wrench  
Plastic trim tools  
Optional trim pliers



---

### **Before we start:**

- Remove your Armorlite from the box and bring it to a warm place and let it relax. You would get weird too if you were folded up in a box.
- Make sure your vehicle is in a stable environment with the parking brake engaged.
- This floor system is year and model specific, do not install in any other vehicle.
- We do not guarantee this floor will fit with any aftermarket product or modification, we do guarantee it will fit your vehicle in a stock situation.
- Armorlite replaces your carpet, do not install it over the top of your existing flooring.
- Do not use floor mats on top of your Armorlite floor. You don't need them, and they are a hazard.
- Make sure your floor is installed correctly before driving. Double check that the pedals are not obstructed before driving.
- Cutting the floor in areas not designated for cutting will void your warranty. If you are having fit issues, email us at [orders@goarmorlite.com](mailto:orders@goarmorlite.com), with clear pictures that have context of where your issue is so we can help you.

**NOTE: Removal of the front seats is necessary to install this floor. Please consider these issues prior to taking this on as a DIY install.**

- Removal of the seats includes de-energizing of the seat airbag system.
- Lifting of the seats, how sore is your back today?
- Seats do fit through door jam, but care should be taken to prevent scratches to vehicle while being removed.

Should any of these issues deter you, we provide a dealer locator on our website.

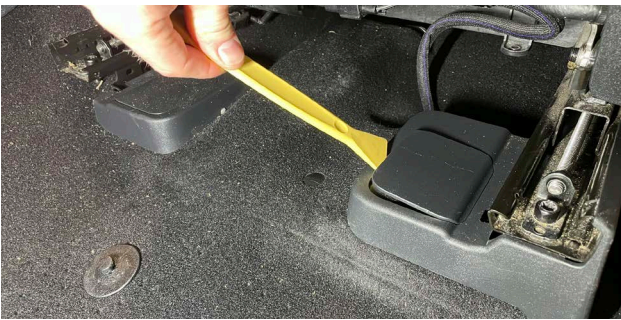
---

### **1. De-Energize Seat Airbags.**

Remove the negative battery cable from the battery and pull to the side to prevent accidental touching to battery post. Before moving forward wait 10 minutes for residual power to dissipate.

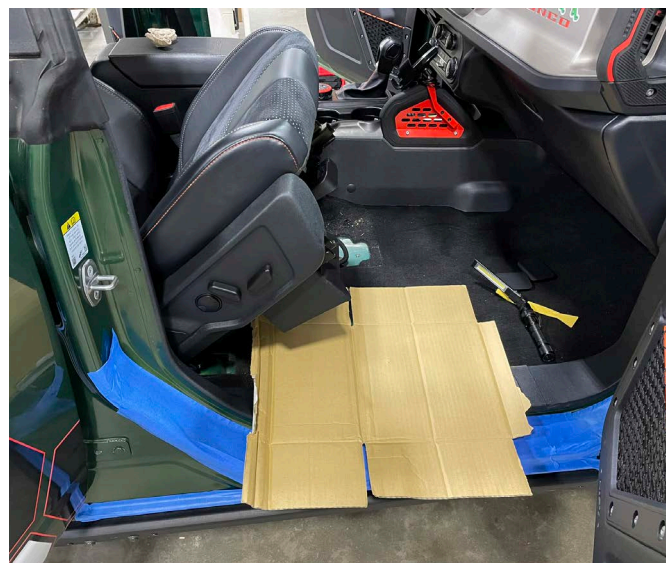
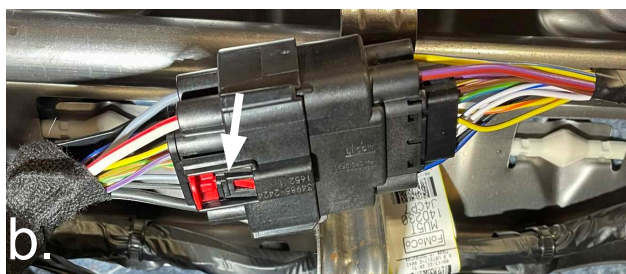
### **2. Remove seats:**

Unbolt seat by 1st removing plastic covers on seat brackets, then unbolt seats using a 13mm socket, moving seat fore and aft to better reach bolts.

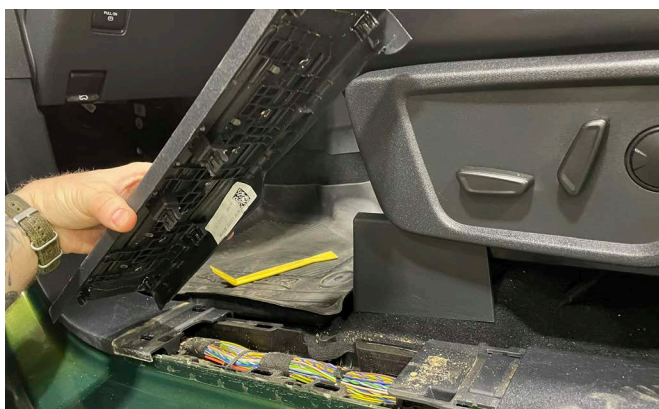


---

**2.2** Before unplugging, position the seat for better removal, moving it to the middle front to back position, seat height all the way down, and seat back leaned forward. Lay the seat back and unclip the harness from the seat by sliding the red tab (a.) back then depressing the tab (b.) to release. Seat is now ready for removal. Using painters tape, cover the door jam area to protect your paint. We also suggest a piece of cardboard over your trim to prevent scratches from the bracket.



3. Remove the trim, starting with the center piece in each door opening. Check the clips on the back to make sure all are still intact.



4. Remove the Driver side kick panel by first prying the cover off the dead pedal to access the nuts holding it in place.



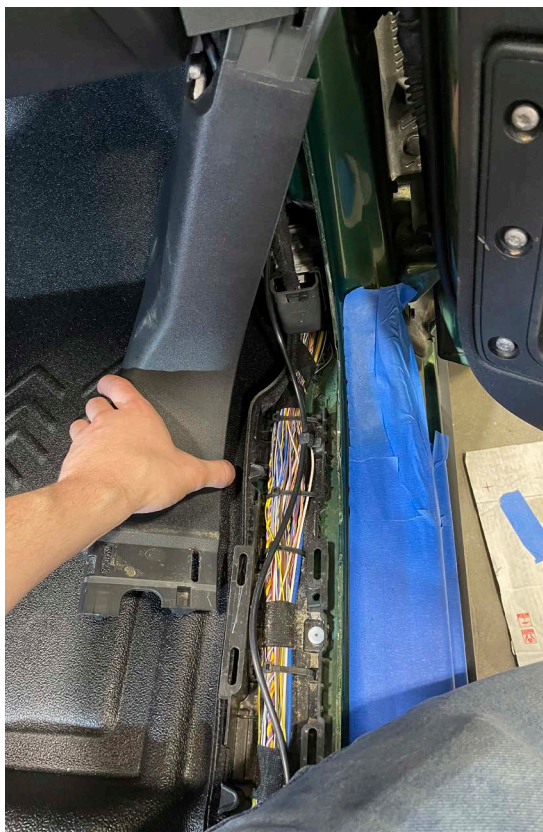
5. After unbolting dead pedal continue to remove the rest of the kick panel trim which is attached to it.

A. Lift up at the seam, and separate the lower from the upper trim.

B Lift up the lower rear of this trim to separate from the wire trough.

C. Continue under the dash and separate the remaining clips.





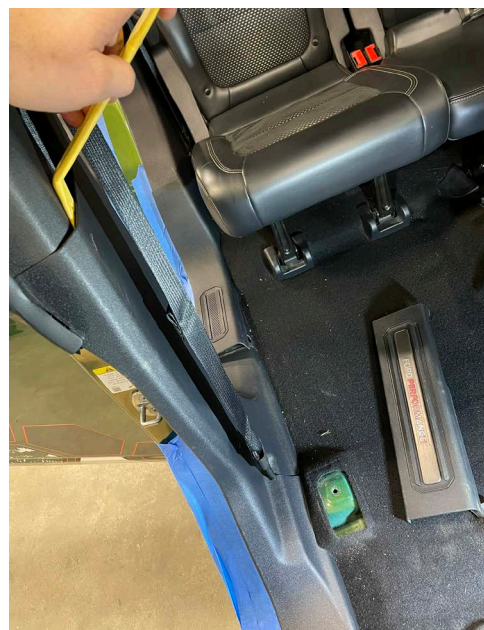
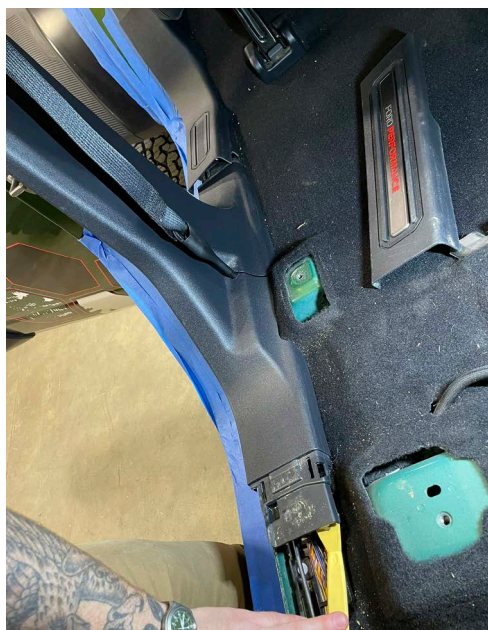
6. Remove the passenger side kick panel in a similar fashion without the dead pedal.

**Note:** Check each part as you remove it to be sure clips are intact and not stuck on the vehicle or damaged.

---

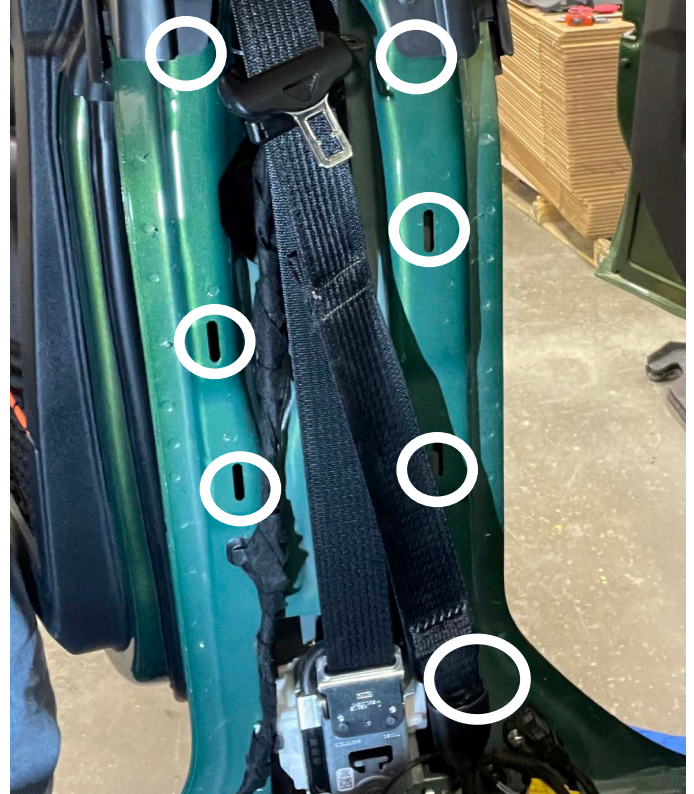
### 7. Remove B pillar trim

Start by lifting up on the rear door trim which overlaps the B pillar trim, then lift up on both the front and rear bottom of B pillar trim unclipping it from vehicle, pull the top of that piece towards the center of the vehicle and carefully separate the rest of it going down, try to pull on the plastic close to the clips to prevent it from breaking.



On these B pillar trim pieces there are 14 metal clips between both sides, make sure all of the clips are accounted for, if any are stuck back into the sheet metal, do not reuse them, instead use one of the replacements we provided. In our experience it is normal for 1-3 to come off the trim part and stay in the metal, we provided 7 to replace them since they are often unusable once they pull off the plastic.

**NOTE! If a metal clip is left in the sheet metal the trim will not clip back into place.**



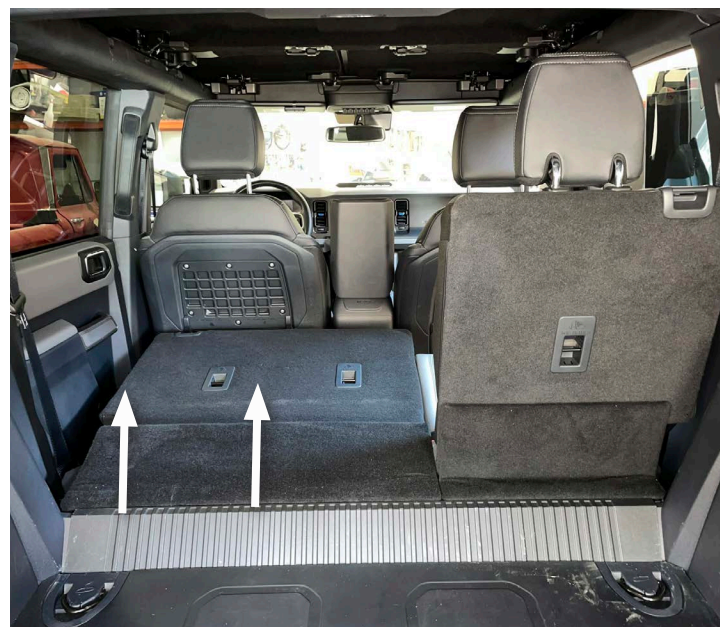
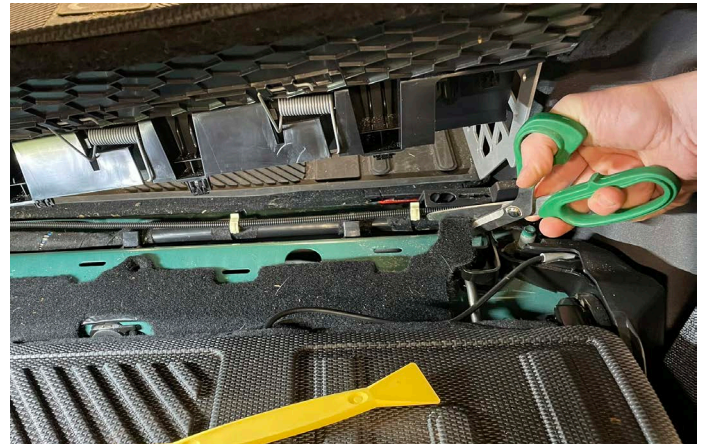
8. Unbolt the center console. There are 4 bolts, one on each side in the front and also the rear. Using a small flathead screwdriver or some other small pry tool remove the bolt covers. Using a 8mm socket remove the bolts. There is also 1 push pin half way down the passenger side. Lift up on the console but do not fully remove it.



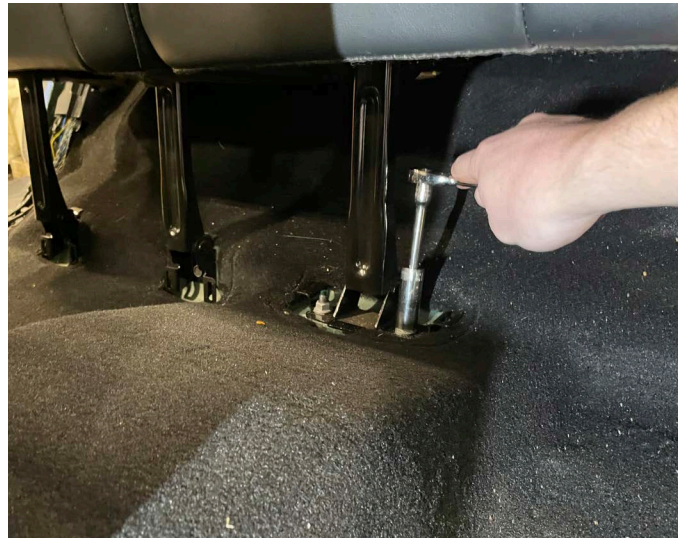
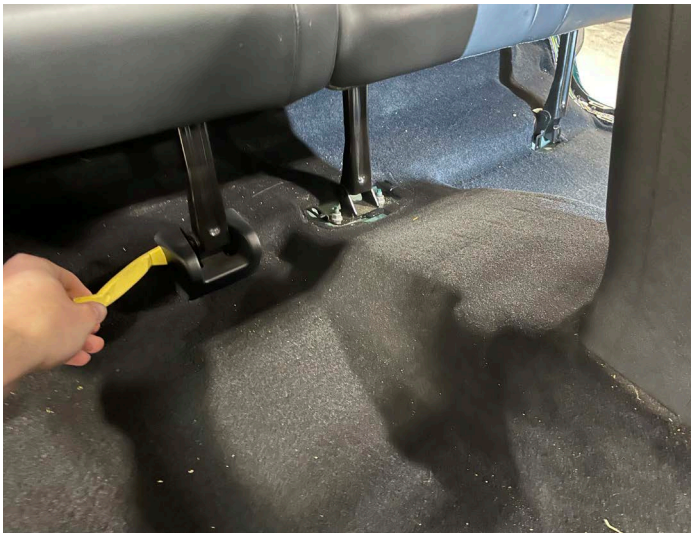
9. **Cut the factory carpet** To remove the factory carpet or rubber floor you will need to make 3 cuts.

1st cut is at the front of the floor under the dash where it connects over the transmission tunnel.

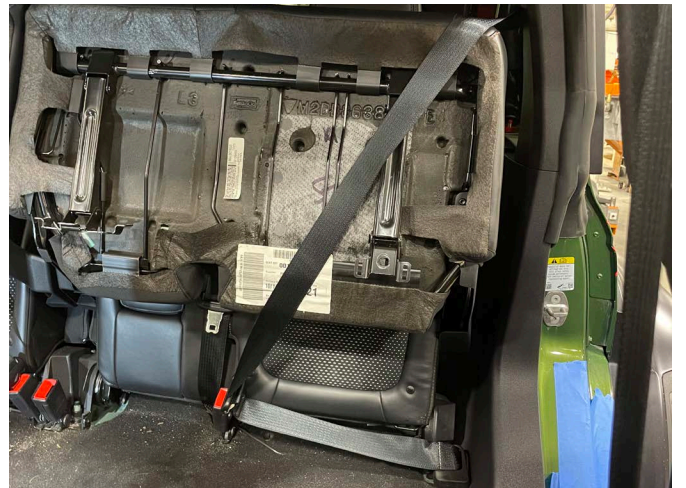
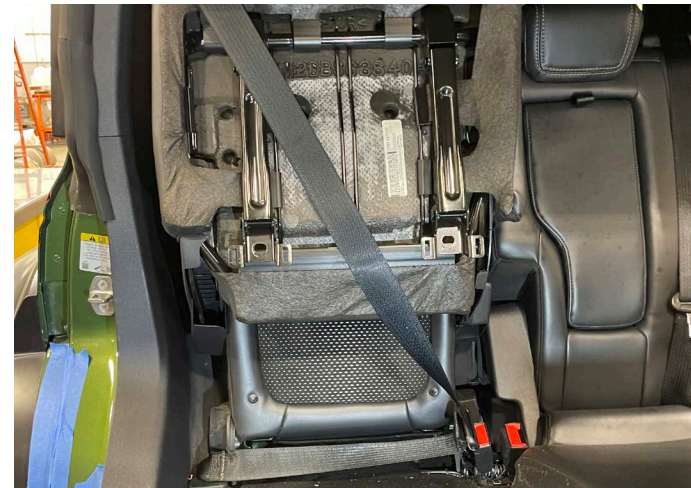
The 2nd and 3rd cuts will be at the back corners where the floor wraps around the outside rear seat bracket. Lay the rear seats down and lift up the divider between the cargo and the seat



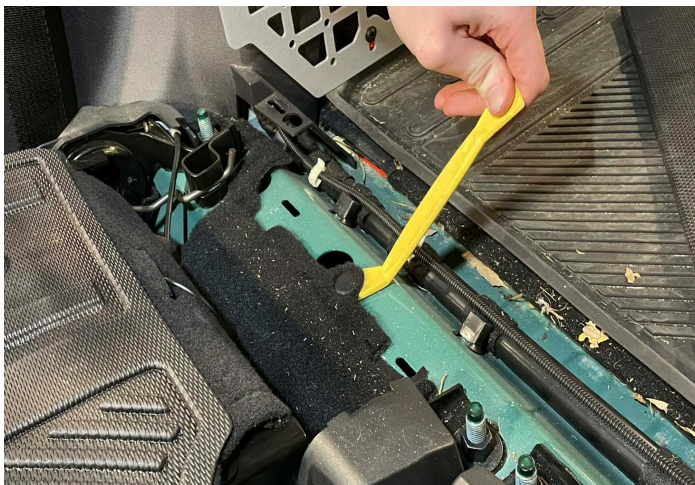
**10.** Remove plastic covers from back seat legs, and unbolt them.



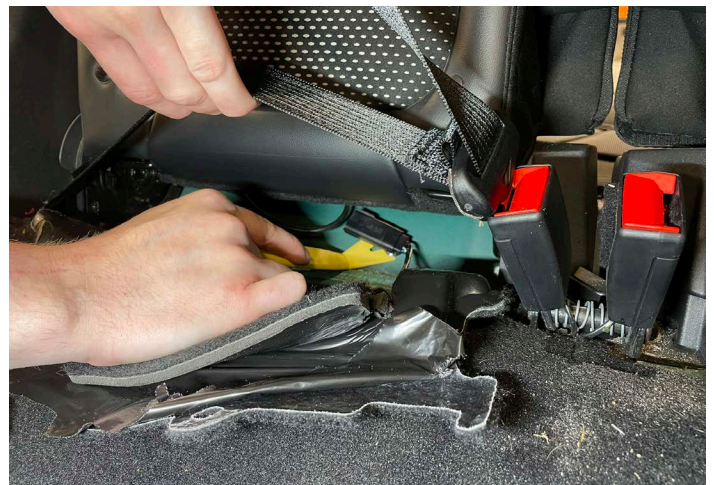
**11.** Fold the bottom of the seats up and secure with the seatbelt by pulling belt across seats, fastening in, then pulling the belt all the way out of the retractor then letting it pull back in locking in place. This should hold seats out of the way without the need for removing them.



**12.** Check the perimeter of the floor and remove all other push pins or connectors



**13.** Unclip the seat belt sensors under rear seats

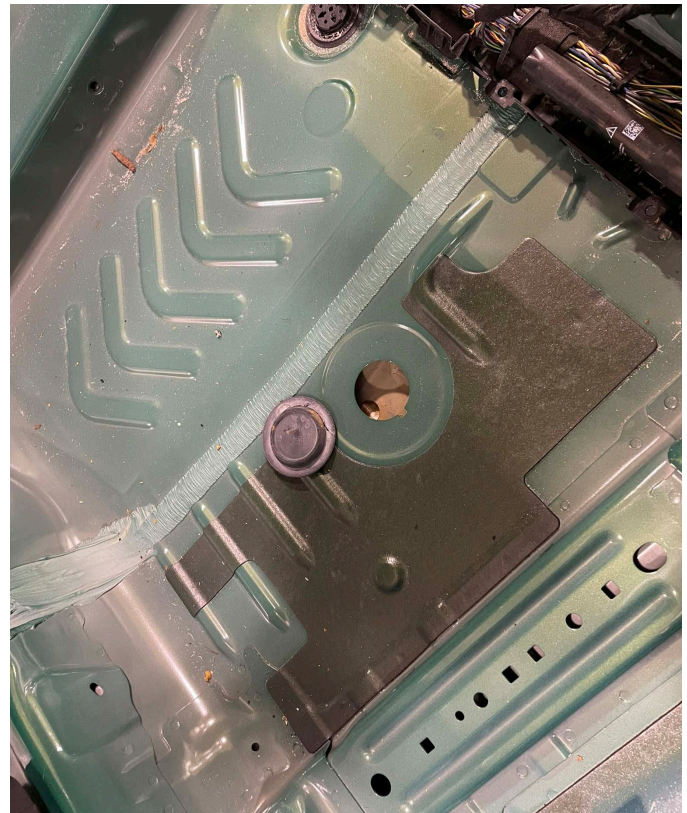




**14.** Remove carpet from vehicle and vacuum all the dirt and french fries up.



**15.** Locate the 4 factory plugs that match the 4 round plug openings in your Armorlite floor and remove them.

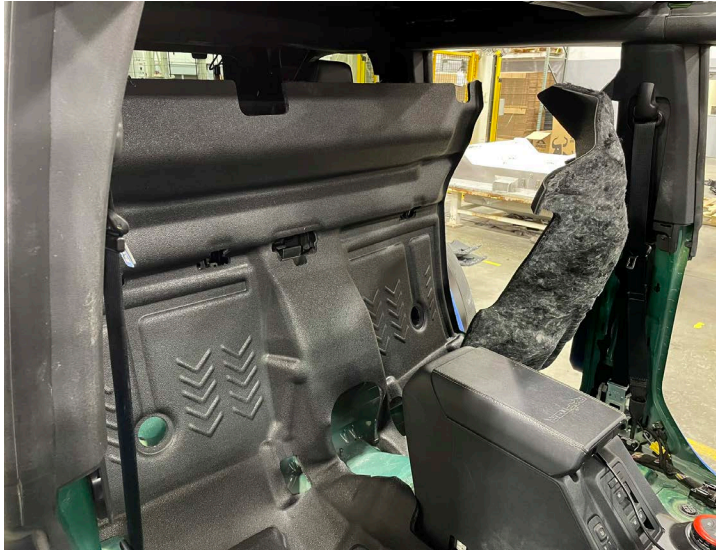


Armorlite is a form fitting floor, IT WILL FIT. Each floor is waterjet trimmed by robots in a form fixture to ensure an exact cut every time.

Be patient, investigate, or email us for help. Cutting the Armorlite floor anywhere that is not specified in the instructions will void the warranty.

---

**16.** Fold the floor front to rear and feed in through the back door. Lay the fronts down along the console and start pulling it forward until it starts to line up with the contours of the floor.



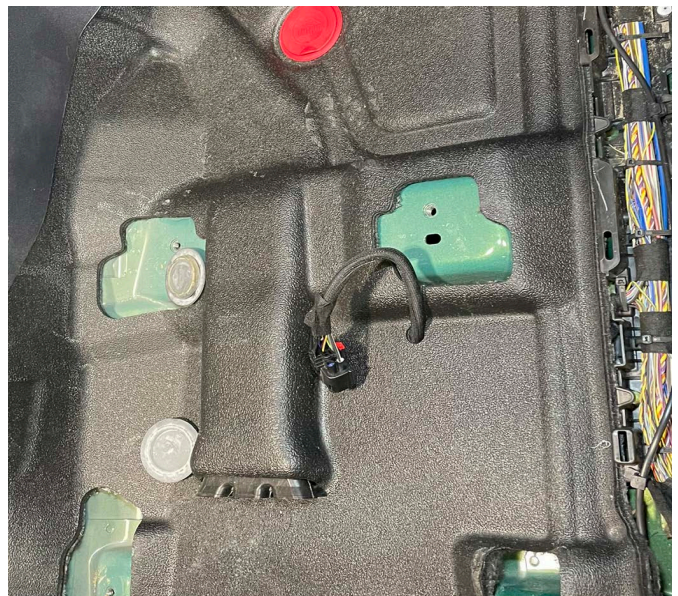
**17.** When the floor is close to being in place, lift the console up and feed the sides of the floor under the console.



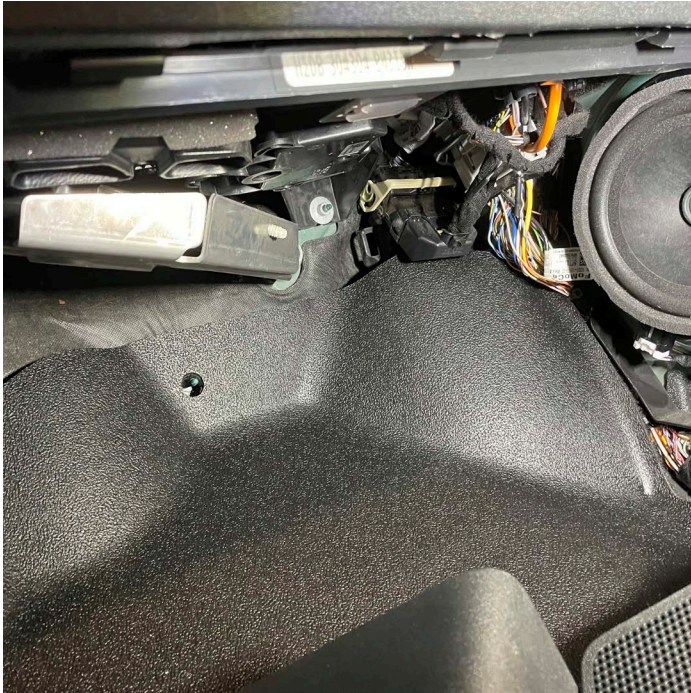
**18.** If equipped, place the vent through the opening in the floor.



**19.** Place electrical wires through the slots.



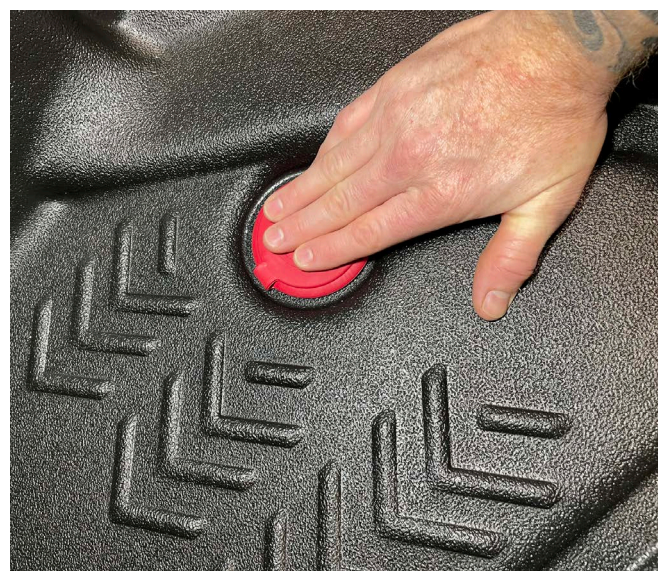
**20.** Run your hand around the perimeter of the floor and make sure it is down all the way and also not hung up on any components like wire harness connectors.



**21.** Install plugs.

Locate the tab on the plug and align with the slot in the sheet metal floor. Push plug through metal past several ribs of the plug until secure in position.

Note: Do not remove by pulling on plug lid, instead lift from side flange or by using pliers to grab the support ribs inside of the plug.

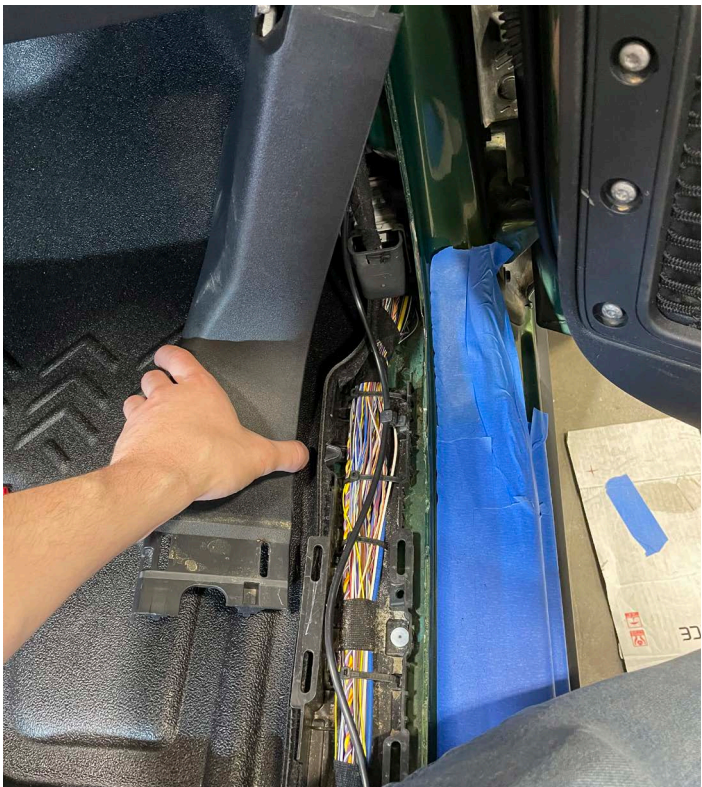


**22.** While checking perimeter pay special attention to make sure back of floor is under the rear seat, seat belt brackets as shown.



---

**23.** Once floor is lined up in place, secure, and pushed down all around start to install trim in the reverse order of removal. Taking special care making sure you understand how the clips attach and watching them as you guide them into their slots will make install much easier. Very minimal effort is often needed to fasten a trim piece. If the trim is not clipping into place, take the time to inspect closer.



**24.** Make sure floor is tucked behind pedals and that each pedal has full swing without touching floor.

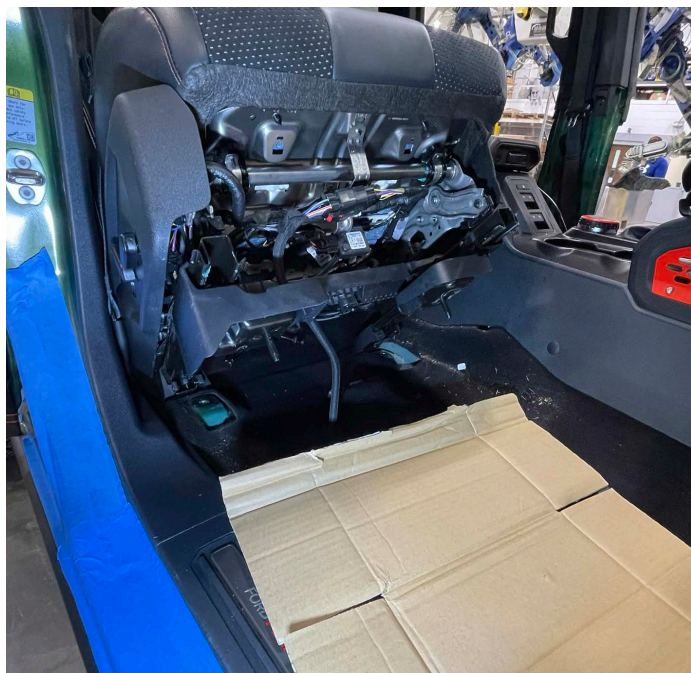


**25.** Reinstall 4 bolts on console and their covers.

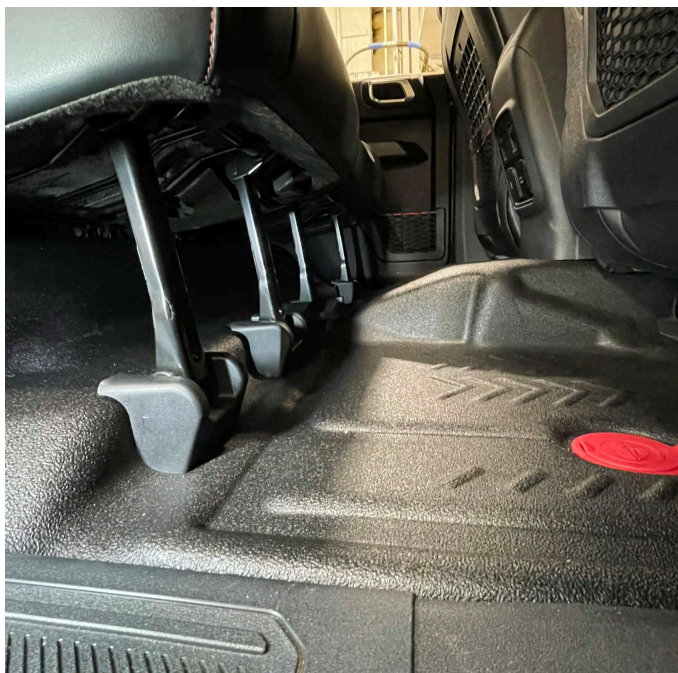


**26.** Place seat back into position and connect the harness. Then proceed to bolt down back into place. Be sure to replace plastic covers.

**Remember sacrificing a piece of cardboard will help protect your trim.**



**27.** Reconnect the rear seat belt sensors, bolt back seat legs back down in position and install plastic covers.



**28.** Once install is complete and all connections are made, reconnect battery. Start vehicle and look for warning lights especially airbag or seatbelt related. Do not drive vehicle until all issues are resolved.

---

**29.** Enjoy your Armorlite floor! Please make sure you do not use floor mats on top of this floor system.

If you had any trouble and were unable to complete this install. Please contact us at [Orders@goarmorlite.com](mailto:Orders@goarmorlite.com), and be sure to provide us clear photos (with surrounding context) along with your order number to verify your parts.



## Cleaning and care:

In most cases water and a brush is all that is needed to clean your floor. Be sure to open your plugs before spraying the floor down with water.

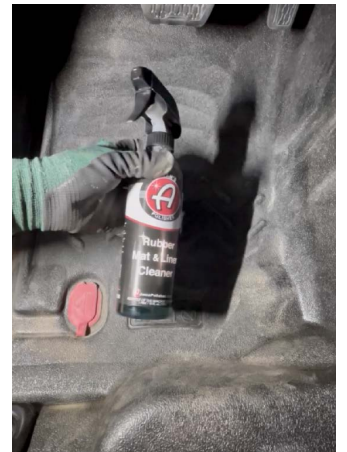
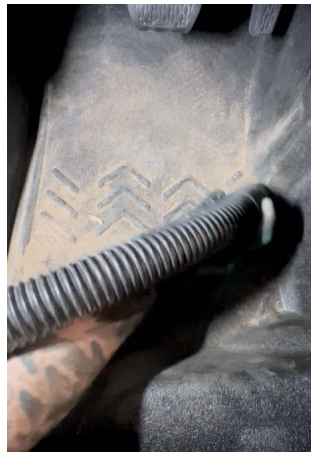
Break up any mud then rinse down the drain.



Another method is to break up any mud with a brush, and vacuum clean. Afterwards, you can mist with water and wipe with a towel.

If your floor continues to look dusty or gray, use our rubber floor cleaner, which is available at [GoArmorlite.com](http://GoArmorlite.com).

Lightly mist the floor with a small amount of floor cleaner, and wipe down with a towel.



Do Not use an excess amount of soap as it can make the floor slick.

Do Not use any products that add shine, these can make the floor slick.

Keeping your floor clean will prolong the life of your Armorlite floor system.

We warranty the Armorlite floor system against normal off road and every day use and wear and tear when properly maintained.