



NATURAL FLAVORS



BELGIAN CHOCOLATE



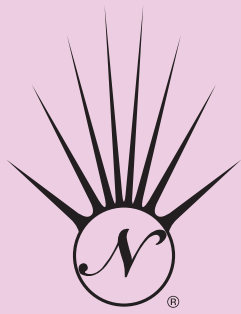
FARMER SUPPORTED CACAO



ORGANIC



GLUTEN FREE



NIRVANA
Belgian Chocolates

BEAUTIFUL

on the outside and irresistible on the inside, Nirvana Organic and Fair trade Bars are the perfect union of pure, rich organic Trinitario cocoa beans and distinctive ingredients for an irresistibly smooth and dark taste.



ORGANIC FAIR TRADE BARS

3.5oz. (100g.) x 12/case



Fair Trade 72%
Dark Chocolate
581



Dark Spicy Aztec Chocolate bar
w/Chili, Vanilla, Cinnamon,
Almonds and Nutmeg
585

MINI CHOCOLATE BARS

0.35 oz. (10gr.) *150 pieces in a dispenser Individually Bar-coded



80% Dark Origin Chocolate from Peru
Mini flowpack
513

Creamy Milk w/Caramelized
Almonds & Sea Salt Mini flowpack
512



72% Dark Chocolate
w/Sea Salt & Caramel
586



72% Dark Chocolate
with Pistachios,
Almonds & Walnuts
589



72% Dark Chocolate with
Crispy Rice & Coconut
591



85% Dark Chocolate
from Peru
592



Creamy Milk Belgian
Chocolate w/Caramelized
Almonds & Sea Salt
593





SPECIALTIES

Made with rich, pure Almonds, these popular marzipan selections are made according to the time-honored artisanal methods and hand-decorated with all natural colorants. Similarly, the Nirvana fruit jellies (Pâtes de fruits) are made with only pure fruit ingredients. Both these artisanal delicacies have proven to leave no taste unsatisfied.



4-piece Pâtes de Fruit
in cello box; 2.8 oz., 12/case
310



6-pc. mini strawberry
marzipan fruit in cello box;
1.94 oz., 10/case
936



4pc. Assorted marzipan fruit
in clear giftbox (assortment of apples,
peach and orange), 3.5 oz., 12/case
940



8-pc. small assorted fruit
marzipan pieces in cello box;
4.23 oz., 12/case
948

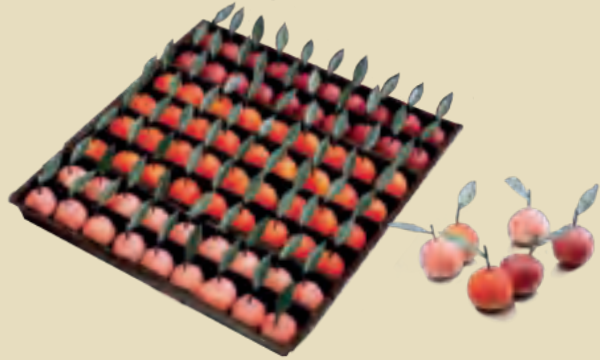
BULK SELECTIONS



Fruit-shaped Bulk
 (2.2Lb.) Assorted Pâtes de Fruits made with all-natural ingredients and 50% of real fruit! Each case contains the following 50 fruits: 6 x strawberry, 12 x tangerine, 10 x black currants, 5 x raspberry, 5 x pineapple, 6 x lemon, 6 x pear - each pc is approx. 20g/ 0.71 oz. 340



Red Pâtes de Fruits
 44 assorted pieces/bulk case - Cherry, blueberry, strawberry, raspberry; 2.2 lb. case 60151



Marzipan Cherries in Bulk (2.65 lb.) 80pc.
 In bulk case (three natural colors: orange, purple and pink) - each pc is 15 g/ 0.53 oz. 95210



Premium Fruit marzipan
 74 assorted pieces/bulk case: 8 varieties per case:
 10 x pear, 10 x green apple, 10 x yellow apple,
 7 x banana, 7 x carrot, 10 x peach, 10 x tomato,
 10 x strawberry (in sealed trays) - each pc is 25g/0.88oz 9025



Marzipan Strawberries
 in bulk: (4.4 lb.) 80pc. in bulk case - each pc is 25g/0.88oz 9030

TRUFFLES

2.2 lb.. Bulk case



Aztec Spicy Dark
 chocolate dusted
 w/brown sugar, filled
 w/a chili spiced ganache
 60



Praliné Chocolate
 Brésilienne covered
 praliné cream milk
 chocolate truffle
 62



Soft Mocha Milk choc.
 truffle covered w/dark
 choc. chips filled w/soft
 mocha cream
 63



Raspberry Dark chocolate
 truffle filled w/a Raspberry
 Cream Ganache
 64



Smooth Caramel
 Milk chocolate truffle
 filled w/a smooth
 caramel ganache
 65



Classic Praliné
 Milk chocolate truffle
 w/ smooth blend
 of hazelnut and chocolate
 66



Champagne White
 truffle filled w/a
 delectable champagne
 ganache filling
 67



Nougatine
 Chocolate
 gianduja cream
 81



Praliné Heart
 Ground hazelnuts,
 vanilla and nougatine
 covered in dark chocolate
 84



Butterflies in Dark
 Chocolate w/caramel
 and sea salt filling
 30012



Swan-shaped chocolate-
 White chocolate with
 praliné filling
 32

NIRVANA HOLIDAY



Gingerbread Man hollow Milk chocolate figurine w/ decorations in cello bag (5" Tall), 12/case 60585



Dark Organic Reindeer figurine in cello bag (5" Tall), 12/case 60800



Dark Organic Santa Figurine in cello bag (5" Tall), 12/case 60855



Milk Organic Snowman figurine in cello bag (5" Tall), 12/case 70800



Hollow snowman Milk chocolate figurine w/ decorations in cello bag (5" Tall), 12/case 70530



Hollow snowman Dark chocolate figurine w/ decorations in cello bag (5" Tall), 12/case 70540



Hollow snowman White chocolate figurine w/ decorations in cello bag (5" Tall), 12/case 70550



Hollow penguin Milk chocolate figurine w/ decorations in cello bag (5" Tall), 12/case 70560



Santa w/backpack hollow dark chocolate figurine in cello bag (6" Tall) Vegan, 12/case 60515



Santa Claus w/bag hollow Milk chocolate figurine w/ decorations in cello bag (5" Tall), 12/case 60550



Santa w/Tree hollow Milk chocolate figurine w/ decorations in cello bag (5" Tall), 12/case 60580



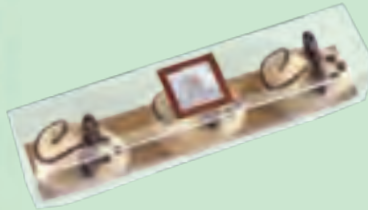
Christmas Tree hollow Milk chocolate figurine w/ decorations in cello bag (5" Tall), 12/case 60575



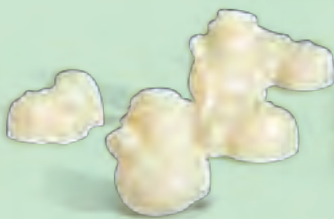
Santa with Toys red decorated milk chocolate in bag with ribbon; 8.82 oz. (7.05" tall) 6/case 63120



5lb. Red and gold assorted foil-wrapped chocolate balls in dispenser 63010



3pc. All natural marzipan Mice w/ chocolate accents 12/case 60935



Bulk case of snowmen-shaped white chocolates w/ praliné filling (approx. 60 pieces) 70011



Bulk case of snowmen-shaped dark chocolates w/ a dark cocoa chocolate filling (approx. 60 pieces) 70012



Bulk case of marzipan mice with chocolate ears - (each is 0.57 ounces) (16.25g) (approx. 56 per case) 65235



6pc. All natural marzipan Strawberries dipped in dark chocolate, 12/case 10190



Bulk case of acorn-shaped milk chocolate w/praliné filling (approx. 60 pieces) 50012



Bulk case of mushroom-shaped white, marbled chocolate w/praliné filling (approx. 60 pieces) 50013



Bulk case of Christmas trees in dark chocolate w/ a gingerbread filling (approx. 60 pieces) 60011

VALENTINE'S DAY



10pc. organic solid dark foil-wrapped chocolates 12/case
11815



10pc. Red foil-wrapped milk chocolate hearts w/ caramel and sea salt filling in cello bag w/ clip. 12/case
11110



10pc. Pink foil-wrapped Dark chocolate hearts w/ champagne ganache filling in cello bag w/ clip. 12/case
11115



4-piece gift-box assorted Valentine's hearts- Caramel and Sea salt and chocolate truffle filling 12/case
10410



Red foil-wrapped milk chocolate hearts w/ salted caramel filling in dispenser
13010

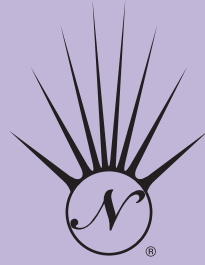


Pink foil-wrapped dark chocolate hearts w/ champagne ganache filling in dispenser
13020



6pc. All natural Marzipan strawberries dipped in dark chocolate in clear giftbox. 12/case
10190

EASTER COLLECTION



N I R V A N A
Belgian Chocolates



12pc. Assorted foil-wrapped chocolate eggs in cello bag w/ clip. 12/case 21110



Assorted Paper Maché eggs filled with 6 assorted foil-wrapped eggs in cello bag with ribbon. (3.5" tall) 12/case 21150



Assorted foil-wrapped chocolate Easter eggs in dispenser 23000



9-pc Foil-wrapped assorted Easter Eggs in cello box; 3.35 oz. 12/case 21190



Cello box with 5 large and 10 small praline filled speckled eggs 2.8 oz., 10/case 21148



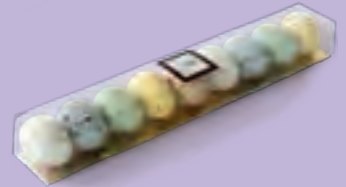
Organic Laughing Bunny in Milk (7" Tall), 12/case 20800



Organic Baby Chick in Milk (5" Tall), 12/case 20810



Organic milk chocolate hare in race car- in cello bag with ribbon; 4.41 oz. 6/case 22210



9pc. Natural pastel colored speckled eggs w/ praliné filling. 12/case 21140



Natural pastel colored speckled eggs w/ praliné filling in bulk case (loose) (Approx. 72pc.) 21142



Classic Bunny in hollow chocolate figurine w/ white accents in cello bag (3 1/2" Tall) Available in Milk (20580) and Dark (20585) chocolate 12/case 20580 / 20585



1pc. Picasso Egg hollow chocolate figurine in cello bag w/clip, mixed case with dark, milk and white chocolate eggs (3" Tall) 24/case 20620



Boy and Girl Bunny in hollow milk chocolate w/ white accents in cello bag (mixed case of 6 of each) (5" Tall) 12/case 20685



Rubber duck white and milk hollow chocolate figurine in cello bag w/ clip (2 1/2" Tall) (mixed case of milk and white chocolate) 24/case 40515