

PAROPY INKJET DARK PRO

APPLICATION INSTRUCTIONS

STEP BY STEP

Step 1

Feed material into inkjet printer so that the printer is printing on the printable side (white matte coated side). Use Photo Quality / Best Quality print mode.

Step 2

Design your image and place your cut lines. Print and Cut your design right reading

Step 3

Weed away excess material using tweezers or weeding tool.

Step 4

Prepress fabric for 5 seconds. Remove backing material and place on fabric with image face up. Place silicon sheet on top of image.

Step 5

Heat apply the material onto the shirt. Press at 375F at 25 seconds. Use medium pressure

Step 6

Peel silicon sheet cool.

APPLICATION

Printing Inks	Dye & Pigment Inks
Print Mode	Photo Quality / Best Quality
Image	Right Reading
Press Time:	25 sec.
Temperature:	375F (190C)
Pressure:	Medium
Suggested Blade:	45 degree
Suggested Force:	40-75g
Peel:	Cool
Wash Temp.:	Up to 105F (40C)

*Do not use teflon sheets when pressing
All technical information and recommendations are based on tests we have conducted.
Users should conduct their own tests before proceeding

NOTES

Recommended Fabrics

Black or Dark Colored
100% cotton
100% polyester*
Poly/cotton blends* (see note below)
Poly/foam & cotton caps
Satin

Accessories Required

Computer, Inkjet Printer, Heat Press.
Cutter/Plotter Optional.

Printable side

The printable side (white matte coated side) where film peels off.

Cutting Notes

You should always test cut prior to any production run. Remember cutter settings will need to be adjusted as your blade ages. For optimal cutting and weeding, maintain a line thickness of at least 1/8" for lettering & logos.

Care Instructions

Wait 24 hours before washing.
Machine wash using mild detergent.
Do not use bleach or other aggressive cleaning agents. Cannot be dry cleaned. Wash Temperature cannot exceed 105F

Storage

Inkjet Dark Premium has an indefinite shelf life when stored at room temperature. Keep away from direct heat, sunlight and humidity.

Non-Continuous Parts

This paper cannot be used with Tack. Try to design the material without any non-continuous parts. You can also hand place non-continuous parts on to your shirt.

*Some polyester garments may experience discoloration and/or dye migration, prior testing is strongly recommended

PAROPY INKJET DARK CLASSIC

APPLICATION INSTRUCTIONS

STEP BY STEP

Step 1

Feed material into inkjet printer so that the printer is printing on the printable side (white matte coated side). Use Plain Paper mode.

Step 2

Design your image and place your cut lines. Print and Cut your design right reading

Step 3

Weed away excess material using tweezers or weeding tool.

Step 4

Prepress fabric for 5 seconds. Remove backing material and place on fabric with image face up. Place silicon sheet on top of image.

Step 5

Heat apply the material onto the shirt. Press at 375F at 20-25 seconds. Use medium pressure

Step 6

Peel silicon sheet cool.

APPLICATION

Printing Inks	Dye & Pigment Inks
Print Mode	Plain Paper
Image	Right Reading
Press Time:	20-25 sec.
Temperature:	375F (190C)
Pressure:	Medium
Suggested Blade:	45 degree
Suggested Force:	40-75g
Peel:	Cool
Wash Temp.:	Up to 105F (40C)

All technical information and recommendations are based on tests we have conducted. Users should conduct their own tests before proceeding

NOTES

Recommended Fabrics

Light or Dark Colored
100% cotton
100% polyester* (see note below)
Poly/cotton blends*
Poly/foam & cotton caps
Satin

Accessories Required

Computer, Inkjet Printer, Heat Press.
Cutter/Plotter Optional.

Printable side

The printable side (white matte coated side) where film peels off.

Cutting Notes

You should always test cut prior to any production run. Remember cutter settings will need to be adjusted as your blade ages. For optimal cutting and weeding, maintain a line thickness of at least 1/8" for lettering & logos.

Care Instructions

Wait 24 hours before washing.
Machine wash using mild detergent.
Do not use bleach or other aggressive cleaning agents. Cannot be dry cleaned. Wash Temperature cannot exceed 105F

Storage

Inkjet Dark has an indefinite shelf life when stored at room temperature. Keep away from direct heat, sunlight and humidity.

Non-Continuous Parts

This paper cannot be used with Tack. Try to design the material without any non-continuous parts. You can also hand place non-continuous parts on to your shirt.

*Some polyester garments may experience discoloration and/or dye migration, prior testing is strongly recommended

PAROPY INKJET LIGHT PRO

APPLICATION INSTRUCTIONS

STEP BY STEP

Step 1

Feed material into inkjet printer so that the printer is printing on the printable side (white matte coated side).

Step 2

Design your image and and resize if necessary. Print your graphic onto the paper. Use Photo Quality / Best Quality print mode.

Step 3

Prepress fabric for 5 seconds.

Step 4

Place on fabric with image face down.

Step 5

Heat apply the transfer onto the fabric. Press at 350F at 20 seconds. Use heavy pressure. Do not use teflon sheets when pressing.

Step 6

Peel after 5 seconds to allow to cool slightly. For glossy finish peel cold.

Tip: Gently stretch your fabric by tugging on the sides after pressing. This will help soften up the transfer.

APPLICATION

Printing Inks	Dye, Pigment, or Sublimation Inks
Print Mode	Photo Quality / Best Quality
Image	Mirror
Press Time:	20 sec.
Temperature:	350F (175C)
Pressure:	Heavy
Peel:	Warm
Wash Temp.:	Up to 105F (40C)

*Do not use teflon sheets when pressing
All technical information and recommendations are based on tests we have conducted.
Users should conduct their own tests before proceeding

NOTES

Recommended Fabrics

White or Light Colored
100% cotton
100% polyester
Poly/cotton blends
Polyester knits
Polyester mesh
Poly/foam & cotton caps
Satin

Accessories Required

Computer, Inkjet Printer, Heat Press.

Printable side

The printable side (white matte coated side) where film peels off.

Pressure Settings

To ensure that the coating has properly fused with the fabric, we recommend to use maximum pressure. If this paper is applied with inadequate pressure, the transfer will not wash well.

Peeling

This paper is to be peeled warm. Peel seconds after pressing. Also if you have difficulties peeling the backing off the shirt, while the fabric is hot, gently tug on the sides of the shirt, the backing will "pop" right out. For glossy finish peel cold.

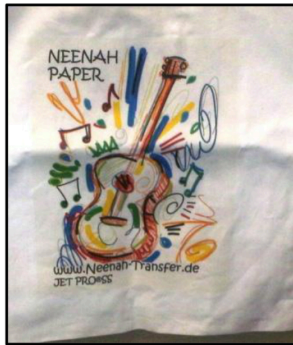
Wash Instructions

Wait 24 hours before washing. Machine wash using mild detergent. Do not use bleach or other aggressive cleaning agents. Cannot be dry cleaned. Wash Temperature cannot exceed 105F. To increase color vibrancy, it is recommended to iron the image after each launder.

Storage

Inkjet Light has an indefinite shelf life when stored at room temperature. Keep away from direct heat, sunlight and humidity.

INKJET PRINTER



JET-PRO®SS HEAT TRANSFER PAPER

Product #NE-JP-SS-8511

Designed for the heat transfer of photos and images using inkjet printers to **light colored T-shirts, sweatshirts, mouse pads, coasters, puzzles and leather goods.** Works well with **cotton, cotton blends and synthetics.** This is the easiest product to use and has the least ‘hand’.

RECOMMENDATIONS

Product #	Fabric Color	Hot Peel	Warm Peel	Cold Peel	Hand Iron
9811P0	White & Light	✓	✓	✓	

COMMERCIAL PRESS INSTRUCTIONS

PRINTING INSTRUCTIONS:

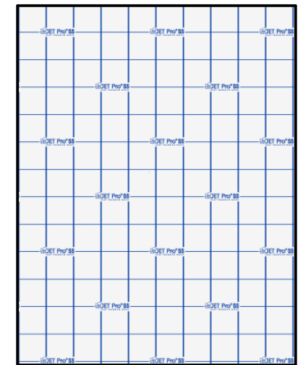
1. Print the image in reverse/mirrored format.
2. Trim away the unprinted areas of the transfer if desired.

PRE-TRANSFERRING INSTRUCTIONS:

1. Prepare the substrate by ensuring the surface is clean, dry and wrinkle free with a 5 - 7 second pre-press.

TRANSFERRING INSTRUCTIONS:

1. Place the transfer on top of the garment with the image side touching the substrate (backing paper is facing you).
2. Press **30 seconds @ 375°F** using **medium/heavy** pressure.
3. Peel **the paper while** still **hot** in a smooth even motion. (Paper may be peeled at any temperature, depending on what end ‘feel’ results are preferred).
4. For best “hand”, stretch the garment while hot.



WASHING INSTRUCTIONS: Turn garment inside out and wash in cold water using a mild detergent. Do not use bleach. Dry on low-heat setting. Do not iron directly on the transferred area. **IMPORTANT:** Heat presses vary in accuracy. The sellers and manufactures maximum obligation shall be to replace any paper that has proven to be defective.

INKJET PRINTER



JET-OPAQUE® II HEAT TRANSFER PAPER

Product #NE-JO-8511

Designed for the inkjet heat transfer printing of **photos** and **images** to **dark colored T-shirts, sweatshirts, mouse pads, puzzles and leather goods.**

This product can be die-cut or kiss-cut and moved with tape.

RECOMMENDATIONS

Product #	Fabric Color	Hot Peel	Warm Peel	Cold Peel	Hand Iron
9754P0	Dark			✓	✓

COMMERCIAL PRESS INSTRUCTIONS

PRINTING INSTRUCTIONS:

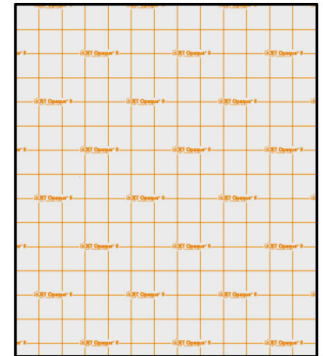
1. Print image right reading on the coated side of the paper.
2. Trim away the unprinted areas of the transfer.
3. Peel the paper backing from the transfer film.

PRE-TRANSFERRING INSTRUCTIONS:

1. Prepare the substrate by ensuring the surface is clean, dry and wrinkle free with a 5 - 7 second pre-press.

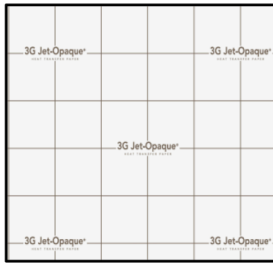
TRANSFERRING INSTRUCTIONS:

1. Place the Heat Transfer Paper on top of garment with image facing up (right reading to you).
2. Completely cover the image with ironing sheet.
3. Cover ironing sheet with a spare piece of cloth.
4. Press **30 seconds @ 350°F** using **medium/heavy** pressure.
5. Peel away ironing sheet once **cold** in a smooth even motion.



WASHING INSTRUCTIONS: Turn garment inside out and wash in cold water using a mild detergent. Do not use bleach. Dry on low-heat setting. Do not iron directly on the transferred area. **IMPORTANT:** Heat presses vary in accuracy. The sellers and manufactures maximum obligation shall be to replace any paper that has proven to be defective.

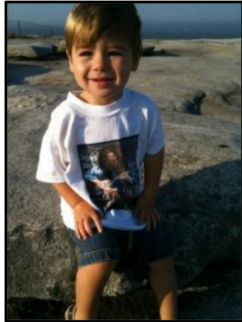
INKJET PRINTER



3G JET-OPAQUE® HEAT TRANSFER PAPER

Product #NE-3G-JO-8511

Designed for transferring inkjet images to dark or other colored garments and substrates. This product contains an opaque layer allowing for photograph quality images to be transferred. This product best used for images that contain white to be transferred onto dark garments.



This product may be cut with a cutter/plotter, die and kiss-cut.

Substrates include: **T-shirts, sweatshirts, mouse pads, puzzles, and leather goods.**



RECOMMENDATIONS

Product #	Fabric Color	Hot Peel	Warm Peel	Cold Peel	Hand Iron
9838P0	Dark			✓	✓*

**hand iron is NOT recommended however, may be hand ironed; the product will NOT be as durable when laundered.*

COMMERCIAL PRESS INSTRUCTIONS

PRINTING INSTRUCTIONS:

1. Print image on coated side of paper right reading (do not mirror the image).
2. Trim away the unprinted areas of the transfer.

PRE-TRANSFERRING INSTRUCTIONS:

1. Prepare the substrate by ensuring the surface is clean, dry and wrinkle free with a 5 - 7 second pre-press.

TRANSFERRING INSTRUCTIONS:

1. Remove the backing paper from the printed image.
2. Place the Heat Transfer Paper on top of the garment with the image facing up (right reading to you).
3. Completely cover the image with an ironing sheet.
4. Place a piece of spare material over the ironing sheet.
5. Press: **30 seconds** at **350°F** using **medium pressure**.
6. Once **cold** peel away ironing sheet in a smooth even motion.

WASHING INSTRUCTIONS: Turn garment inside out and wash in cold water using a mild detergent. Do not use bleach. Dry on low-heat setting. Do not iron directly on the transferred area. **IMPORTANT:** Heat presses vary in accuracy. The sellers and manufactures maximum obligation shall be to replace any paper that has proven to be defective.