

CASCADE FIRE EQUIPMENT



**WILDLAND AND STRUCTURE
2023 CLOTHING AND GEAR SALE**

Sale prices valid through June 1, 2023

STRIKE TEAM® FIRE GEAR



STRIKE TEAM® SHIRT

STRIKE TEAM® SHIRT come in a high-visibility yellow in either 6 oz. Nomex® or 7 oz. Tecasafe® Plus and are full cut to allow freedom of movement. All seams are double stitched with Kevlar® and Nomex® thread throughout.

Shoulders, sleeves, collars, pockets, and all other flaps are double top-stitched, and all stress points are bar tacked. A self-fastening storm flap closure keeps collar extended in upright position with hook and loop storm flap closure.

FEATURES OF STRIKE TEAM® SHIRT

- Pen pocket on sleeve
- Exterior pockets have button closure flaps
- Sleeve cuff closure system with adjustable hook and loop
- NFPA 1977
- Fabric meets flame resistant requirements for CAL OSHA Title 8 GISO Sections 3406(c)(1) and 3410(d)(1)3410(d)(1)



7 OZ. TECASAFE® PLUS

6 OZ. NOMEX®

SIZE	50182 TECASAFE® PLUS	50178 NOMEX®
XS-XL	\$150	\$180
XXL & UP	\$170	\$190

STRIKE TEAM® PANT

STRIKE TEAM® PANT will get you to the fireline and back with safety and comfort.

Tough enough for fighting today's wildland fires and comfortable enough to wear around the station. Full-cut to allow freedom of movement and sewn to Cascade's highest quality standards. All seams are double-stitched and outer leg seams, pockets, pocket flaps, fly and crotch are double top-stitched and bar tacked at stress points.

FEATURES OF STRIKE TEAM® PANT

- Zipper fly with snap closure and interior zipper guard
- 2" elastic waistband with 7 belt loops
- Deep front slash pockets
- Rear pockets with hook and loop closure flaps
- Large side pockets with hook and loop closure flaps
- Leg cuff closure system with adjustable hook and loop
- Certified NFPA 1977 and 1975 (men's sizing only)
- Fabric meets flame resistant requirements for CAL OSHA Title 8 GISO Sections 3406(c)(1) and 3410(d)(1)3410(d)(1)
- WOMEN: Even sizes 2-14 with inseams Petite (30"), Regular (32"), and Long (34")
- MEN: Even numbered waist sizes 30-56 and even numbered leg lengths 28-32



7 OZ. TECASAFE® PLUS
NAVY GREEN

7.5 OZ. NOMEX®
NAVY GREEN

7 OZ. KEVLAR®/ADVANCE™
GREEN KHAKI
NAVY YELLOW

6.5 OZ. ARMOR AP
GREEN KHAKI

MEN'S WAIST SIZE	50180 TECASAFE® PLUS	50189 NOMEX®	50190 KEVLAR®/ADVANCE	50188 ARMOR AP
26-44	\$235	\$275	\$325	\$325

*FOR WAIST SIZES ABOVE 44, MATERIAL SURCHARGE WILL BE ADDED

WOMEN'S WAIST SIZE	50180 TECASAFE® PLUS	50189 NOMEX®	50190 KEVLAR®/ADVANCE	50188 ARMOR AP
2-14	\$235	\$275	\$325	\$325

STRIKE TEAM® BRUSH COAT

FEATURES OF STRIKE TEAM® BRUSH COAT

- Interior zipper flap to prevent direct contact with the wearer's body
- Brass zipper front closure with hook and loop storm flap
- Radio pocket and mic tab
- Upright extension of collar with hook and loop closure
- Sleeve closure system with adjustable hook and loop
- Even numbered chest sizes 32-58

CHEST SIZE	50183 TECASAFE® PLUS	50197Y NOMEX®	50174A ARMOR AP
32-46	\$235	\$275	\$300
48-50	\$250	\$290	\$315
52-54	\$265	\$305	\$330
56-58	\$280	\$320	\$345
TRIPLE TRIM	ADD \$70	ADD \$70	ADD \$70

7 OZ. TECASAFE® PLUS	6 OZ. NOMEX®	5.5 OZ. ARMOR AP
----------------------	--------------	------------------



STRIKE TEAM® BRUSH PANT

FEATURES OF STRIKE TEAM® BRUSH PANT

- Zipper fly with snap closure and interior zipper guard
- 2" elastic waistband with 7 belt loops
- Front slash pockets
- Large pockets with hook and loop closure flaps
- Rear pockets with hook and loop
- Large pockets with hook and loop closure flaps
- 12" zipper and snap fastener leg cuff
- MEN: Even numbered waist sizes 30-56 and even numbered leg lengths 28-36
- WOMEN: Even sizes 2-14 with inseams Petite (30"), Regular (32"), and Long (34")



WAIST SIZE	50184 TECASAFE® PLUS	50189 NOMEX®	50181A ARMOR AP
26-44	\$235	\$275	\$325
46-48	\$250	\$300	\$340
50-52	\$265	\$325	\$365
54-56	\$280	\$340	\$380
WOMEN 2-14	\$235	\$275	\$325
TRIPLE TRIM	ADD \$45	ADD \$45	ADD \$45

PERSONAL PROTECTION



BULLARD WILDFIRE® HELMETS

BULLARD WILDFIRE® HELMETS are specifically engineered to meet the special needs of wildland/forestry firefighters. Manufactured from heat-resistant thermoplastic for superior impact and penetration protection, Wildfire helmets meet and exceed the performance specifications of NFPA 1977 and all major state fire codes for wildland firefighting. Designed to accept a full range of brackets for faceshield visors and screens.

FEATURES OF BULLARD WILDFIRE® HELMET

- Thermoplastic shell
- Flex-Gear ratchet sizing suspension
- 3 goggle clips
- Cotton brow pad
- Reflective lime-yellow stripes



CAP STYLE



HAT STYLE

SKU	HAT STYLE	PRICE
50022	WILDFIRE CAP	\$64
50023	WILDFIRE HAT	\$69

COLORS

ORANGE	RED	BLACK
BLUE	WHITE	YELLOW

THE HOT SHIELD FACE MASK

THE HOT SHIELD FACE MASK is a multiple layer face protector mask designed by firefighters for use in all wildland or outdoor firefighting operations. Provides unequalled, extreme protection against burns to the face/neck. Integral filter pocket accepts a low-level, disposable N-95 filter to reduce smoke and ash particulate common to wildfires (filters not in package; sold separately). Multiple layers of 2600°F resistant Carbon X help maintain the crucial airspace in front of the mouth and nose and absorb perspiration.

FEATURES OF HOT SHIELD FACE MASKS

- One size fits all (hook and loop fasteners)
- Classified NFPA Standard 1977
- Uses disposable (N-95) dry or wet style filter



50601



50600



50603



50600	HOT SHIELD MASK	\$85
50601	REPLACEMENT FILTER	\$8
50603	WEB CASE	\$20

STRIKE TEAM® FACE & NECK SHROUDS

STRIKE TEAM® FACE & NECK SHROUDS are designed to protect Wildland Firefighters from radiant heat without compromising work performance or comfort. For maximum protection, firefighters should adjust the shroud to fit comfortably loose.

The front of the shroud is secured with a self-fastening hook and loop closure, and the Face & Neck Protector can easily be attached to your helmet providing increased protection against heat. Fastening strips are included for use with a variety of helmet brands. Cascade makes three styles: Standard, Deluxe with an inner-shell lining, and Super Deluxe for greater coverage.

STANDARD

50016	STANDARD NOMEX®	\$30
50047	STANDARD TECASAFE® PLUS	\$30

STANDARD SHROUD is available in high visibility yellow 6 oz. Nomex® or 7 oz. Tecasafe® Plus and include 3 self-adhesive fastening strips.

6 OZ. NOMEX®

7 OZ. TECASAFE® PLUS



DELUXE

50013	DELUXE NOMEX®	\$35
-------	---------------	------

DELUXE SHROUD is made from 6 oz. Nomex® shell material with flame-resistant Westex Ultra Soft® Twill inner-shell lining for maximum protection.

6 OZ. NOMEX®

ULTRA SOFT® TWILL



SUPER DELUXE

50030	SUPER DELUXE NOMEX®	\$65
50048	SUPER DELUXE TECASAFE®	\$65

SUPER DELUXE SHROUD is constructed for greater coverage and attaches directly to your suspension for a more secure and comfortable fit. Made from 6 oz. Nomex® with a 5.8 oz. Nomex® liner on interior, or 7 oz. Tecasafe® Plus shell material with a 5.8 oz. Nomex® liner.

6 OZ. NOMEX®

7 OZ. TECASAFE® PLUS

5.8 OZ. NOMEX®



RADIO HOLDERS

STRIKE TEAM® COMMANDER RADIO HOLDER

The **STRIKE TEAM® COMMANDER RADIO HOLDER** does it all! There are pockets for extra batteries, GPS, or cell phone. An elastic notepad holder is released with detachable shoulder straps for taking notes on the go.

50520	STRIKE TEAM® COMMANDER RADIO HOLDER	\$110
-------	-------------------------------------	-------



STRIKE TEAM® RADIO HOLDER

Communication is the key to firefighter safety. With attention to detail, and quality you expect from Cascade, our Radio Holders are made from tough DuPont Cordura® and webbing. Quick release buckles and adjustable straps keep any size of radio secure.

FEATURES OF STRIKE TEAM® RADIO HOLDER

- Deployed Size: Length: 86", Height: 15.5", Width: 31"
- Includes fire shelter, nylon duck carrying case, and carrying case plastic liner
- Forest Service Spec 5100-606 (NFES #0925)

50081	STRIKE TEAM® RADIO HOLDER	\$59
-------	---------------------------	------



BENDIX KING RADIO HOLDER

Our **BENDIX KING RADIO HOLDER** keeps your radio holder snug and in position.

FEATURES OF BENDIX KING RADIO HOLDER

- Adjustable neck and chest harness
- Angled pen or pencil slot
- Hidden map pocket
- Quick release buckles
- Pocket with self fastening flap for extra batteries

50082	BENDIX KING RADIO HOLDER	\$59
-------	--------------------------	------



STRIKE TEAM® WEB GEAR

STRIKE TEAM® WEB GEAR

STRIKE TEAM® WEB GEAR is practical, durable, and comfortable, allowing firefighters to carry their essential gear to the fireline. Comprised of three main components: a Waist Belt with equipment pouches, a detachable Shoulder Harness, and a detachable Web Pack. All Web Gear is made of 1000 denier Cordura® and tough, black polypropylene webbing.

50026	WAIST BELT ONLY	\$69
50027	HARNESS ONLY	\$25
50028	WEB PACK ONLY	\$90
50029	WEB GEAR COMPLETE	\$184

FEATURES OF WEB PACK

- Dimensions: 11"x 14"x 7"
- Main compartment: 14"x 11"x 5"
- Two side pockets: 10"x 3"x 3" each with 3 fuse holders
- Outer back compartment: 11"x 6.5"x 3"

FEATURES OF HARNESS

- Adjustable for varied heights
- 3" wide shoulder padding
- Quickly detach or attach to the belt with quick-release buckles

FEATURES OF WAIST BELT

- Adjustable for varied heights
- 3" wide shoulder padding
- Quickly detach or attach to the belt with quick-release buckles



50026



50027



50028



50029

INITIAL ATTACK PACK

Keep essential wildland fire gear on hand and ready to access whenever you need it with **INITIAL ATTACK PACK**. It effectively stores, carries, and provides ready access to essential wildland fire gear. All system components are made of 1000D Cordura® and feature a MOLLÉ attachment system.

FEATURES OF INITIAL ATTACK PACK

- Horizontal Fire Shelter Case fits both the New Generation Fire Shelter and plastic insert
- V-Tab Bottle Holder securely carries most one-quart water bottles
- Top-loading Large Accessory Bag, 8"x 9"x 4" (for a storage capacity of 400 cu. in.) with an easily accessible wide-mouth zipper opening for convenient storage and access

50506	INITIAL ATTACK PACK	\$105
-------	---------------------	-------



WILDLAND GLOVES

NORTH STAR WILDLAND GLOVES

NORTH STAR WILDLAND GLOVES are made from side split cowhide and have an extra long flame retardant Nomex® knit wristlet. The wristlet is overcast to prevent unraveling and it returns to original shape after being wet.

FEATURES OF NORTH STAR WILDLAND GLOVES

- Sizes: XS, S, M, L, XL
- Meet CAL-OSHA SEC 3410 Wildland



50218	NORTH STAR WILD GLOVES	\$29
-------	------------------------	------

WILDLAND FIRE GLOVES

WILDLAND FIRE GLOVES are made from flame, heat, cut, and puncture resistant cowhide suede leather with black leather palm on wear surface and glove back in gold leather. Includes 4" long double layer knit Kevlar® wristlet with leather pull patch on palm side.

FEATURES OF WILDLAND FIRE GLOVES

- Made in the USA
- Sizes: XS, S, M, L, XL
- Certified to NFPA 1977



50219	WILDLAND FIRE GLOVES	\$42
-------	----------------------	------

STRIKE TEAM® GLOVE HOLDER

Easy storage and immediate access to gloves at all times! Our **STRIKE TEAM® GLOVE HOLDER** is secured by an adjustable, self-fastening nylon strap and uses a D-Ring and Snap Ring to attach to clothing.



50224	STRIKE TEAM® GLOVE HOLDER	\$9
-------	---------------------------	-----



FIRE SHELTERS

REGULAR FIRE SHELTER

FEATURES OF REGULAR FIRE SHELTER

- Deployed Size: Length: 86", Height: 15.5", Width: 31"
- Includes fire shelter, nylon duck carrying case, and carrying case plastic liner
- Forest Service Spec 5100-606 (NFES #0925)

50096	REGULAR FIRE SHELTER	\$450
-------	----------------------	-------



LARGE FIRE SHELTER

FEATURES OF LARGE FIRE SHELTER

- Deployed size: Length: 96" Height: 19.5" Width: 33"
- For firefighters taller than 6' 1" or whose girth exceeds 53" at any point
- Forest Service Spec 5100-606 (NFES #0975)

50096L	LARGE FIRE SHELTER	\$530
--------	--------------------	-------



PRACTICE SHELTER

FEATURES OF PRACTICE SHELTER

- Reusable practice fire shelter systems for training in the use of Regular and Large Fire Shelters
- Includes carrying case, case liner, polyvinyl bag, and practice shelter
- Forest Service Spec 5100-611

50097	PRACTICE FIRE SHELTER	\$220
50097L	LARGE PRACTICE SHELTER	\$249



STRIKE TEAM® ENGINEER FIRE SHELTER PACK

FEATURES OF STRIKE TEAM® ENGINEER FIRE SHELTER PACK

- Constructed of sturdy 1000 denier DuPont Cordura®
- Adjustable elastic shoulder and waist straps
- Includes straps for holding a radio, a side pouch, and two D rings

50054	STRIKE TEAM® ENGINEER PACK	\$90
-------	----------------------------	------



STRIKE TEAM® FIRE SHELTER BELT

FEATURES OF STRIKE TEAM® FIRE SHELTER BELT

- Designed to allow firefighters to carry fire shelters, canteens and other equipment
- 2" nylon webbing with adjustments for waist size and a quick-release buckle

50086	STRIKE TEAM® FIRE SHELTER BELT	\$20
-------	--------------------------------	------



SAFETY EYEWEAR

ESS STRIKE TEAM™ XTO GOGGLES

All **ESS STRIKE TEAM™ XTO GOGGLES** components are heat and flame resistant, including the durable face padding and vent foam. Thick polycarbonate 2.4 mm interchangeable lenses provide maximum impact protection and optical clarity and fit over glasses.

FEATURES OF ESS STRIKE TEAM™ XTO GOGGLE

- ESS Speed-Clip™ strap system
- Wrap-around strap
- Federal OSHA and ANSI-Compliant
- 100% UVA/UVB protection
- Includes 2 tear-off lens covers



50426	ESS STRIKE TEAM™ XTO GOGGLE	\$41
50430	TEAR-OFF LENSES (6 PACK)	\$9

ESS FIREPRO-FS GOGGLES

ESS FIREPRO-FS GOGGLES are optimized for wildland firefighting with a low-profile, compact frame designed for maximum peripheral vision and minimal interference with helmets.

FEATURES OF ESS FIREPRO-FS GOGGLE

- One-piece, wraparound strap with Velcro® tabs
- ESS Speed-Clip™ strap system
- Federal OSHA and ANSI-Compliant
- Certified NFPA 1977



50413	ESS FIREPRO-FS GOGGLE	\$58
-------	-----------------------	------

WILDCAT™ GOGGLES

WILDCAT™ GOGGLES provide extreme heat resistance and performance vision protection. Goggle does not melt, drip, or ignite at 350° F for 5 minutes. Lightweight and comfortable, Wildcat™ Goggles fit naturally to the contour of the face.

FEATURES OF WILDCAT™ GOGGLE

- One-piece, wraparound strap with Velcro tabs
- ESS Speed-Clip™ strap system
- Federal OSHA and ANSI-Compliant
- Certified NFPA 1977



50437	WILDCAT™ GOGGLE (CLEAR)	\$16
50438	WILDCAT™ GOGGLE (SMOKE)	\$16
50440	WILDCAT™ GOGGLE (AMBER)	\$16
50441	WILDCAT™ GOGGLE (GREEN)	\$25



WILDLAND FIREFIGHTER BOOTS

HAIX® FIREFIGHTER BOOTS are like no other in the world! One of the most important investments a firefighter can make is in his boots, because pain and discomfort in your feet can distract you from the firefight. HAIX® firefighting boots have all been tested and approved as NFPA certified. At HAIX®, quality is the number one priority. HAIX® firefighter boots are made to perform well when you most need it while protecting you from the elements.

HAIX® MISSOULA 2.1 BOOTS

TYPE	Wildland
CERTIFICATIONS	NFPA 1977-2016, ASTM F2892-2018
MATERIAL	Waterproof Leather
INNER LINER	CROSSTECH®
LEG HEIGHT	9 INCHES
MEN'S SIZES	N, M, W; MEN: 4.5-15 & half sizes
WOMEN'S SIZES	N, M, W; WOMEN: 5-10 & half sizes



FEATURES OF HAIX® MISSOULA 2.1 BOOTS

- SECURA LINER®: will never wrinkle up or pull out over time HAIX® SUN REFLECT leather helps keep feet cooler in direct sunlight
- HAIX® ARCH SUPPORT SYSTEM supports your foot in its natural, ideal position HAIX® CLIMATE SYSTEM keeps your feet temperature regulated and more comfortable
- HAIX® Lacing System: easy in and out with the personal fit of a lace up boot
- Rubber toe cap for extra abrasion resistance
- Rubber/PU Outsole: Oil, fuel, skid, heat, and electrical hazard resistant, non slip ASTM certified for electrical hazard resistance (EH rated)

50203	HAIX® MISSOULA 2.1 BOOTS	\$305
-------	--------------------------	-------

HAIX® AIRPOWER XR1 PRO BOOTS

TYPE	Wildland, Station, EMS
CERTIFICATIONS	NFPA 1977-2011, NFPA 1999-2013, ASTM F 2413-2011, CAN/CSA-Z195-2014
MATERIAL	Waterproof Leather
INNER LINER	CROSSTECH®
LEG HEIGHT	9 INCHES
MEN'S SIZES	M, W, XW; MEN: 4.5-15 & half sizes
WOMEN'S SIZES	M, W, XW; WOMEN: 5-10 & half sizes



FEATURES OF HAIX® AIRPOWER XR1 BOOTS

- SECURA LINER®: will never wrinkle up or pull out over time HAIX® SUN REFLECT leather helps keep feet cooler in direct sunlight
- HAIX® ARCH SUPPORT SYSTEM supports your foot in its natural, ideal position HAIX® CLIMATE SYSTEM keeps your feet temperature regulated and more comfortable HAIX® Climate System
- HAIX® Lacing System: easy in and out with the personal fit of a lace up boot
- HAIX® 2-Zone Lacing
- Heat resistant rubber sole
- ASTM certified for electrical hazard resistance (EH rated)

50205	HAIX® AIRPOWER XR1 BOOTS	\$315
-------	--------------------------	-------

ROCKY® CODE RED RESCUE NFPA RATED COMPOSITE TOE FIRE BOOT

ROCKY® is bringing innovative footwear to the fire house. With both NFPA 1977 and 1999 certifications, the Code Red: Rescue is built to protect you when responding to any call. This is an eight-inch, composite toe boot that meets ASTM F2413 protective toe, electrical hazard and puncture plate standards. Made from fire-resistant leather with a Vibram Fire and Ice Compound outsole and durable side-stitch construction. The Rocky® Air-Port™ footbed offers supreme comfort. This boot is bloodborne pathogen resistant and has a Stedfast thermal barrier and waterproofing for added protection without compromising comfort. Pick up Code Red: Rescue for protection and comfort on the job.

TYPE	Hybrid-use for Rescue/EMS & Wildlands
CERTIFICATIONS	NFPA 1977, NFPA 1999
MATERIAL	Fire Resistant Leather
INNER LINER	Stedfast Thermal, Bloodborne Pathogen, and Waterproof Barrier
LEG HEIGHT	8 INCHES
MEN'S SIZES	M/W/XW; MEN: 5-16 & half sizes
WOMEN'S SIZES	M/W/XW; WOMEN: 5-10 & half size



FEATURES OF ROCKY® CODE RED RESCUE BOOT

- Hybrid-Use for Rescue/EMS & Wildlands
- NFPA 1977 & NFPA 1999 Certified
- Fire Resistant Leather
- Sidewall Stitch Construction
- Vibram® Fire and Ice Compound Outsole
- Rocky® Air-Port Comfort Footbed
- Speed Lacing System
- Optional Lace-In Zipper
- Fiberglass Shank
- ASTM F2413 Protective Toe Classification, ASTM F2413 Electrical Hazard Standard, & ASTM F2413 Puncture Resistant Standard

RKD0086	ROCKY® CODE RED RESCUE BOOT	\$270
---------	-----------------------------	-------

STRIKE TEAM® GEAR BAGS

STRIKE TEAM® DELUXE GEAR BAG

FEATURES OF STRIKE TEAM® DELUXE GEAR BAG

- Dimensions: 32"x 14"x 13"
- Main compartment measures 24"x 14"x 13", with double heavy-duty YKK zippers that allow entire top of bag to open
- Cargo pouches on both ends: 14"x 13"x 4"
- Side pocket for smaller items
- Silkscreen lettering: FIRE FIGHTER



50091R	RED GEAR BAG	\$130
50091BK	BLACK GEAR BAG	\$130

STRIKE TEAM® DELUXE FORESTRY GEAR BAG

FEATURES OF STRIKE TEAM® DELUXE FORESTRY GEAR BAG

- Dimensions: 24"x 12"x 12"
- Main compartment: 18"x 12"x 12"
- Two cargo pockets: 12"x 12"x 3"
- Two side pockets: 15"x 11"x 3"
- Silkscreen lettering: FIRE FIGHTER



50010R	RED GEAR BAG	\$125
50010BK	BLACK GEAR BAG	\$125

STRIKE TEAM® CREW PACKS

STRIKE TEAM® CREW BAG

FEATURES OF STRIKE TEAM® CREW BAG

- Dimensions: 40"x 14"x 13"
- Extra large main compartment: 34"x 14"x 13"
- Zippered cargo pouches on both ends: 3"x 14"x 13"
- Outside pocket: 15"x 11"
- Silkscreen lettering: FIRE FIGHTER

50094	RED CREW BAG	\$145
-------	--------------	-------



STRIKE TEAM® CREW PACK

FEATURES OF STRIKE TEAM® CREW PACK

- Dimensions: 30"x 14"x 9"
- Main compartment: 24"x 14"x 8"
- Bottom compartment: 6 x 14"x 8"
- Outside compartment: 13"x 16"x 2"
- Pocket on outside compartment: 9"x 8"
- Outer back compartment: 14"x 15"

50095	RED CREW PACK	\$145
-------	---------------	-------



HOSE PACKS

STRIKE TEAM® APPLGATE HOSE PACK

The **STRIKE TEAM® APPLGATE HOSE PACK** has a full front opening under the flap, secured by heavy duty 2" hook and loop.

FEATURES OF STRIKE TEAM® APPLGATE HOSE PACK

- Dimensions: 22"x 18"x 4"
- Capacity: Up to three 100 ft. lengths of 1" hose or two lengths of 1.5" hose

50315	RED STRIKE TEAM® APPLGATE HOSE PACK	\$105
-------	-------------------------------------	-------



STRIKE TEAM® THE FED HOSE PACK

The **STRIKE TEAM® THE FED HOSE PACK** was specifically designed to easily deploy wildland hose from the bottom of the pack. Includes a tough molded carrying handle. Available in Red or Forest Green.

FEATURES OF STRIKE TEAM® THE FED HOSE PACK

- Dimensions: 15"x 15"x 6"
- Capacity: 100 ft. length of 1" hose and 100 ft. length of 1.5" hose

50312	RED STRIKE TEAM® THE FED HOSE PACK	\$95
50312G	GREEN STRIKE TEAM® THE FED HOSE PACK	\$95



STRIKE TEAM® PHOENIX HOSE PACK

The **STRIKE TEAM® PHOENIX HOSE PACK** has large 6.5"x 10"x 2.5" pockets on each side for hose clamps and fittings, a ballistic nylon base, and a flap secured by quick release buckles.

FEATURES OF STRIKE TEAM® PHOENIX HOSE PACK

- Dimensions: 22"x 18"x 4"
- Capacity: Up to three 100 ft. lengths of 1" hose or two lengths of 1.5" hose



50316	STRIKE TEAM® PHOENIX HOSE PACK	\$99
-------	-----------------------------------	------

STRIKE TEAM® CASCADE HOSE PACK

STRIKE TEAM® CASCADE HOSE PACK'S original hose pack is still the most popular. A simple, functional design with a ballistic nylon base and a flap secured by quick release buckles.

FEATURES OF STRIKE TEAM® CASCADE HOSE PACK

- Dimensions: 22"x 18"x 4"
- Capacity: Up to three 100 ft. lengths of 1" hose or two lengths of 1.5" hose



50313	STRIKE TEAM® CASCADE HOSE PACK	\$85
-------	-----------------------------------	------

HOSE

TYPE II SPEC 187™ FORESTRY HOSE



**NORTH AMERICAN
FIRE HOSE**

FEATURES OF TYPE II SPEC 187™ FORESTRY HOSE

- FORESTRY/WILDLAND/CAFS
- Meets US Forest Service SPEC 5100-187
- Polyurethane Lining/Polyester Jacket
- Immune to effects of mildew and rot
- Poly-Cord™ ring spun polyester warp yarns are combined with filament polyester filler yarns
- High visibility yellow Ultra-Shield™ polyurethane coating
- Extremely strong and durable Dura-Thane™ polyurethane inner lining
- Fine twill weave for improved abrasion and snagging resistance
- Hose and couplings are Made in the USA



HOSE SIZE	1"	1.5"
WGT/100 FT	10 LBS.	14 LBS.
SERVICE TEST	300 PSI	300 PSI
ACCEPTANCE TEST	600 PSI	600 PSI

11547-50	1"X 50' COUPLED	\$120
11547-100	1"X 100' COUPLED	\$195
11548-50	1.5"X 50' COUPLED	\$124
11548-100	1.5"X 100' COUPLED	\$199

DRAFTING TOOLS

FOOT VALVES & STRAINERS

Cascade Fire Equipment manufactures **FOOT VALVES & STRAINERS** in 1.5", 2", 2.5", and 3" threads. A full flow clapper valve assures maximum flows with no restriction. Adhered to the end of suction hose for drafting, the valve assures that the pump does not lose its prime and holds its prime once the pump is turned off.

FEATURES OF FOOT VALVES & STRAINERS

- Manufactured from hard anodized aluminum
- Reinforced stainless steel screen

SKU	FOOT VALVES & STRAINERS	DIMENSIONS	WEIGHT	PRICE
23952	Foot Valve & Strainer 1.5" NH	7.5"x 3.5"	1.6 lb	\$150
23953	Foot Valve & Strainer 2" NPSH	8.5"x 3.5"	1.65 lb	\$195
23954	Foot Valve & Strainer 2.5" NH	10"x 2.5"	3.05 lb	\$295
23955	Foot Valve & Strainer 3" NH or NPSH	11.9375"x 4.5"	3.85 lb	\$325



EJECTORS

The **EJECTOR** is a valuable tool for obtaining additional water supplies from sources that would normally be difficult or impossible to reach. The Ejector will pick up more than twice as much water as is used to activate them. This allows water to be obtained from as much as 70 feet below the pumper or from sources several hundred feet from the pump. Cascade's ejectors are made from cast aluminum and anodized for increased wear and corrosion resistance.

APPLICATIONS OF EJECTORS

- Obtaining a water supply from distances up to 70 feet below the pump
- Filling tanks from pools, creeks, etc., at long distances from the pump
- Removing water from basements



14726NPSH	EJECTOR	\$175
14726NH	EJECTOR	\$175
23952	FOOT VALVE AND STRAINER 1.5"	\$150
14727	HIGH VOLUME EJECTOR	\$250
23954	FOOT VALVE AND STRAINER 2.5"	\$295

HAND PRIMER

Cascade's **HAND PRIMER** is used to prime pumps. A 1.5" NH female fitting is attached to 1.5" discharge to bring water up from the source and through the pump to discharge. Made from tough, anodized aluminum with a T-handle for an easy grip, and a knurled end for ease of attachment to male thread.

FEATURES OF HAND PRIMER

- LENGTH: 12.5"
- Weight: 1.75 lbs.

24017	HAND PRIMER	\$125
-------	-------------	-------



BUY ONE, GET ONE FREE

HOSE ADAPTERS

HOSE THREAD ADAPTER

Use to connect hose threads with the same diameter but different threads.



SKU	FEMALE THREAD	MALE THREAD	PRICE
11079	1"	1"	\$60
11080	1.5"	1.5"	\$56

DOUBLE FEMALE ADAPTERS

FEATURES OF DOUBLE FEMALE ADAPTERS

- Join two female threads
- Both ends are hose couplings threads only
- Rocker lugs are standard



SKU	ROCKER LUG FEMALE THREAD	ROCKER LUG FEMALE THREAD	PRICE
11010	1"	1"	\$78
11011	1.5"	1.5"	\$65
11012	2"	2"	\$111
11013	2.5"	2.5"	\$105

DOUBLE MALE ADAPTERS

FEATURES OF DOUBLE MALE ADAPTERS

- Join two male threads
- Both ends are hose threads only
- Made from 3 pieces, both ends swivel



SKU	MALE THREAD	MALE THREAD	PRICE
11000	1"	1"	\$75
11001	1.5"	1.5"	\$51
11003	2.5"	2.5"	\$70

Adapters connect hoses of incompatible diameter, thread, or gender. Our adapters are manufactured from 6061-T6 aluminum and are "Hardcoat Anodized", a very specific type of anodize that gives aluminum parts greater abrasion and corrosion resistance than that provided by the more conventional plain anodize processes.

HOSE THREAD REDUCERS

FEATURES OF HOSE THREAD REDUCERS

- Hose Thread Reducers connect a larger hose thread to a smaller one
- The female thread is larger than the male thread



SKU	REDUCER ROCKER LUG FEMALE THREAD	REDUCER ROCKER LUG MALE THREAD	PRICE
11037	1"	0.75"	\$56
11038	1.5"	0.75"	\$75
11039	1.5"	1"	\$64
11040	2"	1.5"	\$74
11043	2.5"	1.5"	\$69

**SPECIFY THREAD SIZE*

HOSE THREAD INCREASERS

FEATURES OF HOSE THREAD INCREASERS

- Increasers are used to connect a smaller hose thread to a larger one
- The male thread is larger than the female thread



SKU	INCREASER ROCKER LUG FEMALE THREAD	INCREASER ROCKER LUG MALE THREAD	PRICE
11064	0.75"	1"	\$78
11065	1"	1.5"	\$70
11066	1.5"	2"	\$79
11067	1.5"	2.5"	\$81
11239	2"	2.5"	\$123

HOSE HANDLING

CASCADE HOSE ROLLER

THE CASCADE HOSE ROLLER was designed after the popular Western Fire Hose Roller. It is a sturdy, yet lightweight Hose Roller that has been designed to roll single or double rolls of 1" to 3" hose. Whichever length or size of hose, you can be sure that the rolls will be neat and compact.

The hose roller is ideally suited for rolling hose at the station or warehouse after hose has been washed. Mounting options include a Quick Mount Bracket (standard) for mounting the roller on a wall or work bench and a Trailer Hitch Bracket for mounting on a vehicle (part #14044).

FEATURES OF CASCADE HOSE ROLLER

- Rolls 1" to 3" hose in double or single rolls
- Can roll 100' lengths of 1" or 1.5" hose into a side-by-side double donut
- Constructed from lightweight aluminum that has been powder coated for extra protection
- Bronze oilite self-lubricating bearing
- Swings to three positions on bracket
- One person operation
- Dimensions: 32"x 39"x 11.5"
- Weight: 21 lbs.

14042	HOSE ROLLER WITH QUICK MOUNT BRACKET	\$750
14043	QUICK MOUNT BRACKET ONLY	\$125
14044	VEHICLE BRACKET	\$225



WATER HANDLING

FORESTRY HOSE CLAMP

FEATURES OF FORESTRY HOSE CLAMP

- Lightweight Hose Clamp
- Easily shut off 1" or 1.5" single jacketed fire hose at pressures up to 200 PSI
- A spanner is an integral part of the clamp
- Made from a tough, aluminum alloy
- Length: 10"
- Weight: 10 oz.



11213	FORESTRY HOSE CLAMP	\$65
-------	---------------------	------

RANGER PLUS NOZZLES

Lightweight **RANGER PLUS NOZZLES** are engineered to provide an excellent fog pattern and straight stream. Molded teeth makes the fog pattern very dense without a hollow center.

FEATURES OF RANGER PLUS NOZZLE

- Hard anodized with a heavy neoprene bumper
- Twist shut-off
- 1" size flows 10/30 GPM
- 1.5" size flows 20/60 GPM
- Weight: 10 oz. (1"), 14 oz. (1.5")



10921 (NH OR NPSH)	1" TIP 10/30 GPM	\$95
10902 (NH)	1.5" TIP 20/60 GPM	\$110

BALL SHUTOFFS

Lightweight **BALL SHUTOFFS** with large handle provide long life and trouble-free performance and are ideal for nozzles, such as the Ranger, or for hose packs. Made from anodized aluminum with a plastic or stainless steel ball and polyurethane seats.

FEATURES OF BALL SHUTOFFS

- SIZE: Length: 3.5", Diameter: 2.375"
- Weight: 20 oz.



40711 (NH)	1.5" SHUTOFF	\$125
40712 (NH OR NPSH)	1" SHUTOFF	\$105

NO SNAG HANDLE BALL SHUTOFF VALVE 1.5"NH

The **NO SNAG HANDLE BALL SHUTOFF VALVE 1.5"NH** is a new product from Cascade Fire Equipment. This shutoff is perfect for wildland hose packs. The no snag handle fits much better inside the hose pack and also helps prevent unwanted opening/closing of the valve due to the handle snagging.

FEATURES OF NO SNAG HANDLE BALL SHUTOFF VALVE 1.5"NH

- 100% Made in America by Cascade Fire Equipment
- Body constructed from aluminum
- Aluminum cast handle
- Fiber laser etched finish



40713	NO SNAG HANDLE BALL SHUTOFF VALVE 1.5"NH	\$125
-------	--	-------

GIZMO SHUTOFF

The **GIZMO SHUTOFF** can be used to restrict water flows when hose lines are laid downhill and can be used as a shutoff in hose lines, behind foam or other nozzles not equipped with conventional shutoffs. The Gizmo is not a positive shutoff, but in situations where a small amount of leakage is acceptable this shut-off is a valuable tool.

FEATURES OF GIZMO SHUTOFF

- Made from 6061-T6 aluminum, hard anodized for corrosion resistance
- 1.5" NH male and female threads
- Weight: 6.8 oz.
- Compact: Length: 2", Diameter: 2.5"



47020	GIZMO SHUTOFF	\$100
-------	---------------	-------

VALVES

HOSE LINE TEE VALVE

Designed to be placed in a 1.5" hose line at various intervals. The 1" branch can provide water to a hose line, fill back pumps or canteens.

FEATURES OF HOSE LINE TEE VALVE

- 1.5" male and female NH hose thread with a 1" valved tee (NH or NPSH)
- Made of lightweight aluminum with a hard anodized finish
- Length: 5"
- Weight: 1 lb.



11151	HOSE LINE TEE VALVE	\$95
-------	---------------------	------

CHECK & BLEEDER VALVE

The **CHECK & BLEEDER VALVE** is a valuable tool when using portable pumps that are pumping to higher elevations. The valve is attached to the discharge of the pump. When the pump is shut down, a clapper valve closes and holds the water in the elevated hose line. When the pump is restarted, the Bleeder Valve is opened. This allows the pump to start without back pressure from the hose line. When the engine reaches full speed, the bypass valve is closed, allowing all water to enter the hose line.

FEATURES OF CHECK & BLEEDER VALVE

- Constructed from lightweight aluminum, hard anodized finish
- 1.5" Male and Female threads are NH; 1" is NPSH
- LENGTH: 6.25"



11153	CHECK & BLEEDER VALVE	\$150
-------	-----------------------	-------

PRESSURE RELIEF VALVE

PRESSURE RELIEF VALVES are used to bypass discharge from pump when nozzle is shut off or pressure becomes excessive. When pressure is relieved or nozzle opened, the valve automatically closes, returning discharge to hose line. Hand wheel allows bypass pressure to be set at desired pressure.



FEATURES OF PRESSURE RELIEF VALVE

- SIZE: 7.5"x 3"
- Weight: 2 lbs.
- 1.5" Male and Female threads are NH; 1" is NPSH

11155	PRESSURE RELIEF VALVE	\$150
-------	-----------------------	-------

WYES

FORESTRY WYE

Lightweight wye valve constructed from high quality aluminum with anodized hose threads, stainless steel drive spindle, and stainless steel components.



FEATURES OF FORESTRY WYE

- Operate at pressures up to 600 PSI
- Meets USFS specification 5100-380
- One 1.5" Female inlet and Two 1.5" Male outlets

40065	1.5" FORESTRY WYE	\$275
-------	-------------------	-------

LIGHTWEIGHT GATED WYES

Divide one hose line into two with independent control for each line. Lightweight gated wyes are constructed from anodized aluminum. Body is epoxy-coated red for an extremely tough finish. Quarter-turn ball valves have seats that can be adjusted without disassembling the valve.



FEATURES OF 2.5" LIGHTWEIGHT GATED WYES

- One 2.5" Female inlet NH Thread
- Two 1.5" Male outlets NH Thread

40067	2.5" GATED WYE	\$305
-------	----------------	-------

FEATURES OF 1.5" LIGHTWEIGHT GATED WYES

- One 1.5" Female inlet NH Thread
- Two 1.5" Male outlets NH Thread

40085	1.5" GATED WYE	\$295
-------	----------------	-------

NO SNAG WYE

Lightweight wye valves with snag free handles. Constructed from high quality aluminum with anodized hose threads, stainless steel drive spindle, and stainless steel components.



FEATURES OF NO SNAG WYE

- Operate at pressures up to 600 PSI
- Meets USFS specification 5100-380

40064	1"(F) X TWO 1"(M)	\$250
40069	1.5"(F) X TWO 1.5"(M)	\$250
40084	1.5"(F) X 1.5"(M) X 1"(M)	\$250

BACKPACK PUMPS

SMOKECHASER PRO 5-GALLON FIRE PUMP WITH FEDCO PUMP

FEATURES OF SMOKECHASER PRO 5-GALLON FIRE PUMP WITH FEDCO PUMP

- 5 Gallon ballistic nylon bag with heavy duty, load sensitive internal liner
- Ergonomically designed "wedge" shaped with heavily padded closed cell straps to reduce fatigue and resist moisture retention
- Quick disconnect, coupled with USFS approved Fedco Brass Pump (#175764)
- Dual top handles allow for easy balance and secure field filling
- Military grade laser cut MOLLE system gives the ability to secure common tools and equipment
- Model#: 190514



24184	SMOKECHASER PRO 5-GALLON FIRE PUMP WITH FEDCO PUMP	\$239
-------	--	-------

SMOKECHASER FIRE PUMP

The **SMOKECHASER FIRE PUMP** eliminates storage problems encountered with metal tanks because it is collapsible. Bag is constructed of a strong polyester fabric encased in tough vinyl for superior durability and resistance to weather, acid, alkalis, and water. The combination nozzle allows for change from a straight stream to a cone spray quickly and easily without any special tools. The shoulder straps and carry handle will not rot or mildew. Conforms to the back for comfortable carrying.



FEATURES OF SMOKECHASER FIRE PUMP

- Seams are electronically sealed and reinforced at all stress points
- Completely rust proof, solid brass pump.
- Positive shutoff at any position
- Pump has been tested 50,000 strokes at 4 PSI without loss of efficiency
- Military spec shoulder strap is equipped with clip to hold pump
- Oil proof 44" long hose equipped with a rust proof ball bearing quick connect
- Meets USFS Spec. No. 5100-257
- Weight: 4.5 lbs. (empty)
- Capacity: 5 Gallons
- Folded Size: 19.5"x 2"

24180	SMOKECHASER FIRE PUMP	\$185
-------	-----------------------	-------

FORESTRY HAND TOOLS

DRIP TORCH

A **DRIP TORCH** is an effective tool for wildfire suppression, controlled burning, and other forestry applications to intentionally ignite fires. Our versatile Drip Torch is used for firing semi-dry fuels and is an ideal tool for prescribed burning, back firing, roadside burning, slash and brush disposal.

Constructed from 15 gauge seamless aluminum with a rugged forged aluminum bottom to prevent wear and punctures. Cascade's Drip torch Incorporates a ball check valve and fuel trap to prevent flashbacks and a breathing tube with a shut-off to prevent fuel leaks when in the storage mode. Spout is reversible for storage.



FEATURES OF DRIP TORCH

- Capacity: 1¼ US Gallons
- Empty Weight: 5 lbs.
- Shipping Weight: Drip Torch - 6 lbs.; Truck Bracket - 2½ lbs.
- Height: Closed - 14"; Assembled - 25"
- Diameter: 6"
- UN/DOT approved
- Meets USDA Spec 5100-614

12000	DRIP TORCH	\$170
-------	------------	-------

DRIP TORCH BRACKET

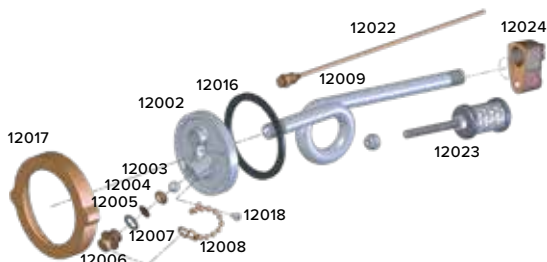
The truck mount bracket holds **DRIP TORCH** in an upright position. 4 holes in the bottom are used for mounting. Rubber coated bracket prevents scratching.



FEATURES OF DRIP TORCH BRACKET

- Powder coated 18 gauge steel
- Shipping Weight: 2.5 lbs.

12001	TRUCK MOUNT BRACKET	\$65
-------	---------------------	------



DRIP TORCH REPLACEMENT PARTS		
12002	TANK COVER	\$24
12003	CHECK VALVE BALL	\$1.75
12004	CHECK VALVE SEAT	\$3.75
12005	OUTLET SCREEN	\$1.85
12006	DISCHARGE SEALING PLUG	\$7
12007	DISCHARGE PLUG GASKET	\$2
12008	DISCHARGE PLUG CHAIN	\$2
12009	SPOUT AND FUEL TRAP	\$25
12016	TANK COLLAR GASKET	\$3.25
12017	TANK COVER LOCK RING	\$21
12018	CHAIN SCREW	\$0.65
12022	BREATHER TUBE ASSEMBLY	\$17
12023	IGNITER	\$13
12024	NOZZLE	\$7

*PARTS ARE INTERCHANGEABLE WITH MOST OTHER DRIP TORCHES

FOAM

FOAM-FLO™ FOAM PROPORTIONING SYSTEM

The FOAM-FLO™ meters wildland (class A) foam concentrate into hose lines in the desired percentages. The Foam-Flo™ can treat up to 100 GPM or as low as 5 GPM of water. Foam concentrate can be metered into the hose lines in various amounts, from .01% to 1%.

The Foam-Flo™ can easily be installed on Slip-On Units, Portable Pumps or Pumpers. There are three hoses, one is attached to the pump suction, the second hose attaches to the pump discharge and the third to the foam concentrate. All connections are on the back side of the Foam-Flo™. An integrated ball check valve prevents water from entering the foam supply. All components are anodized aluminum, brass or stainless steel, and the label is a tough waterproof vinyl. Unit measures 6½” x 3” x 1¼” and weighs 2 lbs.

PLEASE NOTE: The Foam-Flo is not for use with positive displacement pumps.

FOAM-FLO™ 11923A

This model is made to install on portable pumps. This model has garden hose fittings on all three connections. The foam pick up hose is supplied, the other two hoses are not.

11923A	FOAM-FLO™ FOR PORTABLE UNIT	\$375
--------	-----------------------------	-------



FOAM-FLO™ 11923F

This model is primarily used on Slip-On Units or Wildland Fire Pumpers. It comes complete with mounting bracket, quick connect couplings and hoses. All hoses and connections are supplied:

- 2 quick connect couplings; One for ½” tubing, the other for 3/8” tubing. Both have ¼” NPT male threads
- The ½” coupling is to be connected to the suction side of the pump. The 3/8” coupling is connected to the discharge side of the pump
- 3/8” clear tubing with the ¾” GHT thread is attached to the “FOAM SUPPLY” on the back of the Foam-Flo™

11923F	FOAM-FLO™ FOR PERMANENT UNIT WITH BRACKET	\$400
--------	---	-------



PHOS-CHEK WD 881 WILDLAND FOAM

PHOS-CHEK WD 881 WILDLAND FOAM was developed specifically for use in Wildland Fire Management and at the rural/urban interface. The results obtained by Wildland Fire Management Agencies around the world prove its value. While providing excellent performance in wildland fires, this foam is less expensive and is used at lower concentrates (from .02% to 1%), making it a cost-effective tool in today's wildland fire activities.

Phos-Chek Class A foam concentrate is specifically formulated to make water more effective. The unique combination of surfactants significantly reduces water's surface tension and penetrates deep into Class A fuels, creating a barrier between the fuel and the fire and reducing the amount of water needed to fight a fire.

FEATURES OF PHOS-CHEK WD 881 WILDLAND FOAM

- Phos-chek is the most concentrated Class A foam available
- Contains no EPA listed hazardous materials
- Readily biodegrades in the environment
- Extinguishes both Class A and B fires
- Meets USDA Spec 5100-301a for aerial and ground application



**GSA PALLET PRICING AVAILABLE FOR CLASS A FOAM*

21031	WD 881 FOAM 5-GALLON PAIL	\$175
21031-55	WD 881 FOAM 55-GALLON DRUM	\$1,935
21031-48	WD 881 FOAM 48 5-GALLON PAILS	\$7,455



FOAM-FLO™ NOZZLES

Lightweight, high efficiency **FOAM-FLO™ NOZZLES** with a unique stream design. Expansion of 10 to 1 when using Class "A" Foam at 0.05%. The normal reach is 45 feet or greater, depending on nozzle pressure, mix ratio and wind conditions. Made from a tough, aircraft aluminum and hard anodized for durability and corrosion resistance.

- 11895 and 11897 are ideal for use on twin tip nozzles
- 11896 and 11898 are designed for use on a 0.75" or 1" booster hose
- 11926 and 11927 make excellent foam when used on 1.5" hose

SKU	WATER GPM	FOAM GPM*	BASE THREAD	LENGTH	WEIGHT	PRICE
11895	10	100	0.75"	8"	10 OZ.	\$55
11896	10	100	1"	8"	10 OZ.	\$60
11897	18	180	0.75"	8"	10 OZ.	\$55
11898	18	180	1"	8"	10 OZ.	\$60
11926	25	250	1.5"	16"	1.375" LBS.	\$70
11927	35	350	1.5"	19"	1.625" LBS.	\$70

**AT 10-1 EXPANSION*



INNOTEX® TURNOUTS

REQUEST A DEMO!

CASCADE SPECIFICATIONS FOR COAT AND PANT		
OUTER SHELL	MOISTURE BARRIER	THERMAL BARRIER
ARMOR AP™ - GOLD	CROSTECH® BLACK MOISTURE BARRIER	GLIDE ICE™ 2-LAYER

COAT FEATURES	
A	3M SCOTCHLITE® 3" SEGMENTED (TRIPLE TRIM) IN NEW YORK STYLE
B	SEMI BELLOWS POCKETS (PAIR) 8" X 9" LINED WITH KEVLAR® TWILL REINFORCEMENT
C	RADIO POCKET (UNIT) - REGULAR H: 8 X L: 4 X D: 2
D	MIC TAB ADDITIONAL MIC TAB LOCATED ABOVE FLASH LIGHT CLIP (NOT SHOWN)
E	FLASHLIGHT HOLDER

ADDITIONAL COAT SPECIFICATIONS

- Inside Pocket (7.5" x 8") (not shown)
- Napoleon Pocket (6") (not shown)
- Hand-warmer pockets with Nomex FR polar fleece (pair) (not shown)



PANT FEATURES	
F	3M SCOTCHLITE® 3" SEGMENTED (TRIPLE TRIM) - YELLOW GRAY
G	FULL BELLOWS POCKETS (PAIR) - (10" X 10" X 2") LINED WITH KEVLAR® TWILL REINFORCEMENT
H	EMK™ (ENHANCED MOBILITY KNEE)

ADDITIONAL PANT SPECIFICATIONS

- 6-Tool-2 rows of 3" (not shown)
- Deluxe Cotton Suspenders ("H style") (not shown)
- Nomex belt (not shown)



AVAILABLE IN GOLD, TWO-TONE (SHOWN), AND BLACK

PERSONALIZATIONS AVAILABLE

COAT AND PANT SET	\$2,995
-------------------	---------

STRUCTURE GLOVES

INNOTEX® GLOVES VESTA MAX

Imported 3D glove. Engineered and designed by INNOTEX delivering unmatched dexterity and durability.

FEATURES OF INNOTEX® GLOVES VESTA MAX

- Black Eversoft Split Cowhide Shell & Kevlar Knit
- Knuckle padding
- Strengthened Sewing
- PRO-TECT™ Glove Inserts
- Nomex®/Kevlar® thermal lining
- NFPA 1971 requirements
- Wristlet style also available



VESTA MAX GLOVES	\$99
------------------	------

DEX-PRO

The Dex-Pro Glove is a 3D design that incorporates innovative design features together with specific materials to form a glove that delivers maximum dexterity, extreme durability and superior protection. Cowhide provides the best balance of durability, dexterity, abrasion resistance and comfort, and goatskin is highly flexible and water resistant. Certified NFPA 1971. Glove Sizes XS-XXL.

FEATURES OF DEX-PRO

- Black Eversoft Split Cowhide Shell & Kevlar Knit
- Knuckle padding
- Strengthened Sewing
- PRO-TECT™ Glove Inserts
- Nomex®/Kevlar® thermal lining
- NFPA 1971 requirements
- Wristlet style also available



50240	DEX-PRO GLOVES	\$120
-------	----------------	-------

EXTRICATION GLOVES

HexArmor Elite® products, made with SuperFabric® brand materials, offer industry leading cut-resistance, exceeding both ISEA/ANSI F1790 and CE/EN388 Level 5 cut-resistance. Performance is enhanced through the configuration of tiny guard plates which provide resistance to lacerations and slashes like no other material on the market. Exterior and interior seams implement a double-stitched core-spun thread. Pre-curved design, double-stitched side seams, and durable TP-X® palm and fingertip reinforcement. All gloves are machine washable. Sizes XXS-3XL.



- Full Impact Exoskeleton™
- IR-X® smash guards
- Airprene™ Velcro® cuff
- Superior back-of-hand impact protection system
- Elastic Velcro® wrist closure
- Superior back-of-hand impact protection system
- SlipFit® and anti-debris cuff

24430	4011 EXT Gloves	\$55
-------	-----------------	------

24431	4012 EXT Gloves	\$52
-------	-----------------	------

24432	4013 EXT Gloves	\$59
-------	-----------------	------

FIRE ARMOR® SR-X® 8180

FIREARMOR® SR-X® 8180 structural firefighting gloves are built to battle high heat and intense situations, equipped with 360° water and heat resistance for unsurpassed protection while on the job. Gloves feature an added back-of-hand Kevlar® inner liner and reinforced cut-resistant protection for accident-prone areas. Additionally, each glove is built with water-resistant and flame resistant cow suede, including form-fitted fingers, to maintain superior comfort and dexterity right out of the bag, even after repeated use and washing. Designed with H2X+™ technology to barrier against water, chemicals, and bloodborne pathogens while on the job.

FEATURES OF FIRE ARMOR® SR-X 8180

- Extended gauntlet cuff for added protection against debris
- Reinforced thumb saddle and palm for increased durability and abrasion resistance
- NFPA 1971:2018 Certified H2X+™ FR moisture barrier (interior layer)
- 100% Nomex® knit inner liner for 360° heat resistance (TPP>60)
- Kevlar® liner on back-of-hand provides added cut resistance for unexpected hazards
- Washable and quick to dry



50243	FIRE ARMOR® SR-X® 8180	\$89
-------	------------------------	------

INNOTEX® GRAY 25 HOOD

INNOTEX® GRAY™ Hoods shield the vulnerable area between helmet & coat using an air permeable, carcinogenic particulate blocking layer, and a smooth, cooling inner FR viscose multi-filament liner.

Full drape coverage around the shoulders and 100% protection coverage throughout the hoods, with a flatlock stitch for maximum comfort with heavy 1/2" elastic that prevents stretching out.

The INNOTEX® GRAY™ Hoods use a 3 layer approach. The two inner layers are laminated together to increase comfort and reduce bulk. The Particulate Blocking Layer uses a proprietary version of Stedair® PREVENT, which blocks carcinogenic particulates 0.1 µm to 1.0 µm (microns) by greater than 99%. (NFPA 1971: 2018 Edition requirement is a minimum of 90%).

The INNOTEX® GRAY™ Hood 25 has a THL of 427 and a TPP of 22.6. The NFPA 1971: 2018 Edition THL requirement is a minimum of 325 and the TPP requirement is a minimum of 20. Available with an outer layer of Gray 20%/80% Nomex/Lenzing blend, or with an outer layer of Gold 20%/80% PBI/Lenzing blend.



50157	INNOTEX® GRAY 25 HOODS M/L	\$140
50158	INNOTEX® GRAY 25 HOODS XL	\$140



CAIRNS® HELMET

STRUCTURAL 360S

Light-weight, low profile design.

- Impact/Thermal Cap
- Thermoplastic Shell
- Accommodates hat sizes 6¾ - 7¾



70200	CAIRNS® 360S STRUCTURE HELMET	\$370
-------	-------------------------------	-------

STRUCTURE FIREFIGHTER BOOTS

HAIX® FIRE EAGLE AIR

TYPE	Structure
CERTIFICATIONS	NFPA 1971-2013, NFPA 1992-2012, ASTM F 2413-2011, CAN/CSA-Z195-2014
MATERIAL	Sun Reflect Waterproof Leather
INNER LINER	CROSSTECH®
LEG HEIGHT	11 INCHES
MEN'S SIZES	N, M, W; MEN: 5-16 & half sizes
WOMEN'S SIZES	N, M, W; WOMEN: 5-12 & half sizes



FEATURES OF HAIX® FIRE EAGLE AIR

- Highly slip resistant and superior traction sole
- Built in boot jack
- HAIX® Ankle Flex and Climate System
- Secura Liner®
- Anatomically formed, padded composite protective toe cap
- HAIX® Ankle Flex System
- Lightweight PU shock absorption
- Flame-resistant outer sole
- HAIX® Arch Support and Vario Wide Fit System

50213	HAIX® FIRE EAGLE AIR	\$425
-------	----------------------	-------

HAIX® FIRE HUNTER XTREME

TYPE	Structure
CERTIFICATIONS	NFPA 1971-2013, NFPA 1992-2012, ASTM F 2413-2011, CAN/CSA-Z195-2014
MATERIAL	Sun Reflect Waterproof Leather
INNER LINER	CROSSTECH®
LEG HEIGHT	14 INCHES
MEN'S SIZES	N, M, W; MEN: 5-16 & half sizes
WOMEN'S SIZES	N, M, W; WOMEN: 5-12 & half sizes



FEATURES OF HAIX® FIRE HUNTER XTREME

- Secura Liner®
- HAIX® MSL System
- HAIX® Ankle Flex & Climate System
- Steel protective toe cap
- Exterior profiled rubber toe cap
- Steel puncture protective, slip resistant, heat resistant sole
- Ladder shank for extra support
- Padded shin protection

50201	HAIX® FIRE HUNTER XTREME	\$410
-------	--------------------------	-------

HAIX® FIRE HUNTER USA

TYPE	Structure
CERTIFICATIONS	NFPA 1971-2013, NFPA 1992-2012, ASTM F 2413-2011, CAN/CSA-Z195-2014
MATERIAL	Sun Reflect Waterproof Leather
INNER LINER	CROSSTECH®
LEG HEIGHT	14 INCHES
MEN'S SIZES	N, M, W; MEN: 5-16 & half sizes
WOMEN'S SIZES	N, M, W; WOMEN: 5-12 & half sizes



FEATURES OF HAIX® FIRE HUNTER USA

- Secura Liner®
- HAIX® MSL & Climate System
- Steel protective toe cap
- Exterior profiled rubber toe cap
- Steel puncture protective, slip resistant, heat resistant sole
- Larger boot straps below the topline
- Ladder shank for extra support
- Padded shin protection

50212	HAIX® FIRE HUNTER USA	\$350
-------	-----------------------	-------

ROCKY® CODE RED STATION SLIP-ON COMPOSITE TOE BOOT

Enjoy comfort without sacrificing safety between calls with the ROCKY® STATION COMP TOE SLIP-ON. Easily slip on these full grain leather boots using the pull loops on the front and back. This boot meets ASTM F2413 protective toe and electrical hazard standards. The oil and slip resisting rubber outsole will keep you safe while the Comfort Track footbed will keep you comfortable. The twin gore panels make for easy on and off, so you won't waste any time suiting up for a call. Built for comfort, safety and ease these boots are perfect to wear around the station.

TYPE	Station
MATERIAL	Fire Resistant Leather
LEG HEIGHT	6 INCHES
SIZES	Unisex styles come in men's sizes



FEATURES OF ROCKY® CODE RED STATION BOOT

- Reinforced Pull Straps
- Light and flexible cement construction
- ASTM F2413 protective toe classification & ASTM F2413 electrical hazard standard
- Oil- and slip-resistant rubber outsole
- Fiberglass shank
- 6 inches in height
- Comfort Track footbed
- Rocky Rebound EVA Midsole for Shock Absorption
- 3-D molded counter pocket

RKD0114	ROCKY® CODE RED STATION BOOT	\$135
---------	------------------------------	-------

ROCKY® CODE RED STRUCTURE NFPA RATED COMPOSITE TOE FIRE BOOT

ROCKY® is bringing innovative footwear to the fire house. With the NFPA 1971 certification, Code Red: Structure is built for fighting fires in a structured environment. This is a 14-inch pull-on featuring red accents and reflective highlights for safety and visibility. The pull-handles are full size to fit almost your entire hand for quicker and easier donning. This boot has a composite safety toe and meets ASTM F2413 protective toe, electrical hazard, and puncture resisting standards. Made from fire-resistant leather with a Vibram Fire and Ice Compound outsole and durable side-stitch construction. The Rocky® Air-Port™ footbed offers supreme comfort. This boot is bloodborne pathogen resistant and has a Stedfast thermal barrier and waterproofing for added protection without compromising comfort. Stay protected fighting structural fires with the Code Red: Structure.

TYPE	Structure
CERTIFICATIONS	NFPA 1971
MATERIAL	Fire Resistant Leather
INNER LINER	Stedfast Thermal, Bloodborne Pathogen, and Waterproof Barrier
LEG HEIGHT	14 INCHES
MEN'S SIZES	M/W/XW; MEN: 5-16 & half sizes
WOMEN'S SIZES	M/W; WOMEN: 5-10 & half size



FEATURES OF ROCKY® CODE RED STRUCTURE BOOT

- Sidewall Stitch Construction
- Vibram® Fire and Ice Compound Outsole
- Rocky® Air-Port Comfort Footbed
- Reflective Highlights
- Fiberglass Shank
- ASTM F2413 Protective Toe Classification, ASTM F2413 Electrical Hazard Standard, & ASTM F2413 Puncture Resistant Standard

RKD0087	ROCKY® CODE RED STRUCTURE BOOT	\$320
---------	--------------------------------	-------

FIRE INNOVATIONS



APACHE COBRA® NFPA CLASS II HARNESS

The **APACHE COBRA HARNESS** is a certified NFPA 1983:2017 Fire Resistance (FR) Class II harness. The harness is lightweight and self-adjusting. This patented adjusting method is a feature unique to the design. The Apache Cobra Harness is constructed with 100% Kevlar® webbing, and comes standard with two attachment point/positioning points for bailout and/or connecting a NFPA ladder hook. The Apache harness is available in two multi-sized options. Regular fits 28" to 42", large fits up to 54" waists.



1101-0051	APACHE COBRA® HARNESS	\$325
-----------	-----------------------	-------

ARAPAHO™ NFPA ESCAPE & LADDER BELT NFPA CLASS II HARNESS

The Arapaho Series is a modular belt that extends the features from an NFPA Escape Belt, to a NFPA Ladder Belt, to a NFPA Class II. This harness is adjustable from 28" to 52" to easily accommodate most firefighters. This harness can be outfitted with a ladder hook along with a bailout system for added versatility.



1101-0055	ARAPAHO™ ESCAPE, LADDER, & HARNESS	\$340
-----------	------------------------------------	-------

CREE™ ESCAPE & LADDER BELT

The Cree Belt is a UL certified NFPA 1983:2017 Escape Belt. It is easy to use and makes an outstanding multi-function firefighter escape and ladder belt. A patented Multi-Use Strap can be added, and functions as a NFPA ladder strap, a one leg harness, and for various RIT and victim carries/drag. This strap can be neatly stowed inside a turnout pocket. The Cree series has 1.75" nylon FR treated construction, and comes standard with an attachment point for bailout and/or connecting a NFPA ladder strap.



1101-0027	CREE™ ESCAPE & LADDER BELT	\$99
-----------	----------------------------	------

LAKOTA® NFPA ESCAPE & LADDER BELT

The Cree Belt is a UL certified NFPA 1983:2017 Escape Belt. It is easy to use and makes an outstanding multi-function firefighter escape and ladder belt. A patented Multi-Use Strap can be added, and functions as a NFPA ladder strap, a one leg harness, and for various RIT and victim carries/drag. This strap can be neatly stowed inside a turnout pocket. The Cree series has 1.75" nylon FR treated construction, and comes standard with an attachment point for bailout and/or connecting a NFPA ladder strap.



1101-0006	LAKOTA® ESCAPE & LADDER BELT	\$190
-----------	------------------------------	-------

SUPER VAC BATTERY-OPERATED FANS



DEWALT® BATTERY FAN OPTIONS



PART NUMBER	DESCRIPTION	WEIGHT [W/BATTERIES AND SHORE POWER]	SIZE	PRICE
V16-BD-09-AC-SP	16" PPV, 2X 9 AH BAT., 2X AC CHARGERS, SHORE POWER	45 lbs	16" Blade — HxWxD: 22.75" x 23.50" x 12"	\$4,750.00
V16-BD-12-AC-SP	16" PPV, 2X 12 AH BAT., 2X AC CHARGERS, SHORE POWER	53 lbs	16" Blade — HxWxD: 24.25" x 23.75" x 12.25"	\$5,040.00
V18-BD-09-AC-SP	18" PPV, 2X 9 AH BAT., 2X AC CHARGERS, SHORE POWER	58 lbs	18" Blade — HxWxD: 25.75" X 25.75" X 12.25"	\$5,535.00
V18-BD-12-AC-SP	18" PPV, 2X 12 AH BAT., 2X AC CHARGERS, SHORE POWER	58 lbs	18" Blade — HxWxD: 25.75" X 25.75" X 12.25"	\$5,815.00
V20-BD-09-AC-SP	20" PPV, 2X 9 AH BAT., 2X AC CHARGERS, SHORE POWER	63 lbs	20" Blade — HxWxD: 28.25" X 28.75" X 12.5"	\$5,780.00
V20-BD-12-AC-SP	20" PPV, 2X 12 AH BAT., 2X AC CHARGERS, SHORE POWER	63 lbs	20" Blade — HxWxD: 28.25" X 28.75" X 12.5"	\$6,060.00

MAKITA® BATTERY FAN OPTIONS



PART NUMBER	DESCRIPTION	WEIGHT [W/BATTERIES AND SHORE POWER]	SIZE	PRICE
V16-BK-08-AC-SP	16" PPV, 2X 8 AH BAT., 2X AC CHARGERS, SHORE POWER	46 lbs	16" Blade — HxWxD: 22.75" X 23" X 12"	\$4,750.00
V16-BK-12-AC-SP	16" PPV, 2X 12 AH BAT., 2X AC CHARGERS, SHORE POWER	54 lbs	16" Blade — HxWxD: 24.25" x 23.75" x 12.25"	\$5,040.00
V18-BK-08-AC-SP	18" PPV, 2X 8 AH BAT., 2X AC CHARGERS, SHORE POWER	56 lbs	18" Blade — HxWxD: 25.50" x 26" x 12.25"	\$5,535.00
V18-BK-12-AC-SP	18" PPV, 2X 12 AH BAT., 2X AC CHARGERS, SHORE POWER	56 lbs	18" Blade — HxWxD: 25.50" x 26" x 12.25"	\$5,815.00
V20-BK-08-AC-SP	20" PPV, 2X 8 AH BAT., 2X AC CHARGERS, SHORE POWER	61 lbs	20" Blade — HxWxD: 28.25" x 28.75" x 12.25"	\$5,780.00
V20-BK-12-AC-SP	20" PPV, 2X 12 AH BAT., 2X AC CHARGERS, SHORE POWER	61 lbs	20" Blade — HxWxD: 28.25" x 28.75" x 12.25"	\$6,060.00

MILWAUKEE® BATTERY FAN OPTIONS



PART NUMBER	DESCRIPTION	WEIGHT [W/BATTERIES AND SHORE POWER]	SIZE	PRICE
V16-BL-08-AC-SP	16" PPV, 2X 8 AH BAT., 2X AC CHARGERS, SHORE POWER	45 lbs	16" Blade — HxWxD: 22.75" x 23" x 12"	\$4,750.00
V16-BL-12-AC-SP	16" PPV, 2X 12 AH BAT., 2X AC CHARGERS, SHORE POWER	53 lbs	16" Blade — HxWxD: 24.25" x 23.75" x 12.25"	\$5,040.00
V18-BL-08-AC-SP	18" PPV, 2X 8 AH BAT., 2X AC CHARGERS, SHORE POWER	58 lbs	18" Blade — HxWxD: 25.50" x 26" x 12.25"	\$5,535.00
V18-BL-12-AC-SP	18" PPV, 2X 12 AH BAT., 2X AC CHARGERS, SHORE POWER	58 lbs	18" Blade — HxWxD: 25.50" x 26" x 12.25"	\$5,815.00
V20-BL-08-AC-SP	20" PPV, 2X 8 AH BAT., 2X AC CHARGERS, SHORE POWER	62 lbs	20" Blade — HxWxD: 28.25" x 28.75" x 12.5"	\$5,780.00
V20-BL-12-AC-SP	20" PPV, 2X 12 AH BAT., 2X AC CHARGERS, SHORE POWER	62 lbs	20" Blade — HxWxD: 28.25" x 28.75" x 12.5"	\$6,060.00

19-TON LIFTING PACKAGE INCLUDES: 3 BAGS, 3 HOSES, 3 SHUTOFFS, AND 1 REDUCER

HIGH-PRESSURE LIFTING BAGS 8 BAR (116 PSI) (FLAT BAGS)

FEATURES OF HIGH-PRESSURE LIFTING BAGS

- EN 13731
- NFPA 1936
- Stackable up to 3 bags
- Superb stability



19-TON LIFTING PACKAGE **\$4,395**

TYPE	PART NUMBER	DIMENSIONS	WEIGHT	WORKING PRESSURE (PSI)	AIR REQUIREMENT [CU./FT.]	MAX. LIFTING CAPACITY (US TONS)	MAX. LIFTING HEIGHT	MAX. LIFTING CAPACITY AT MAX. LIFTING HEIGHT (US TONS)
SFB-K 2/17	282314	18" X 18" X 1"	11.3 LBS	116	7.1	14.9	6.7"	2.5
SFB-K 7/17	519883	22" X 22" X 1"	16 LBS	116	7.9	23.2	6.7"	7.4
SFB-K 10/17	519884	24" X 24" X 1"	20 LBS	116	12.4	27.7	6.7"	10.5

RUBBER INFLATION HOSES



TYPE 5 m (16')
1.5 kg (3.3 lbs)

RED 611163
GREY 611165
BLUE 611161

CONTROLLER



HAND-HELD SINGLE DEADMAN CONTROLLER
8 bar (116 psi)
1.2 kg (2.6 lbs)
519819

OTHER ACCESSORIES



SHUT-OFF + SAFETY VALVE
8 bar (116 psi)
0.4 kg (0.88 lbs)
519051

X3



PRESSURE REDUCER
10 BAR (145 PSI)
300 BAR (4350 PSI)
2.2 KG (4.9 LBS)
CGA - 596586

SCAN TO WATCH
SAVA FLAT BAGS
VIDEO →



AMKUS® FIRE RESCUE TOOLS

AMKUS®
RESCUE SYSTEMS

ION iCT716 COMBI TOOL

A compact, all-metal body combination rescue tool that combines the capabilities of a cutter and spreader. It's a versatile "first on scene" tool for engines, ambulances, rescue trucks and tow recovery vehicles. It can be used to spread, cut and "pop" doors. Powered by a DEWALT® FLEXVOLT™ 60 Volt battery that can be shared with other DEWALT tools like saws and drills.

SPECIFICATIONS

- UL Certified, NFPA 1936 compliant
- Powered by a DEWALT FLEXVOLT 60 Volt battery that can be shared with other DEWALT tools
- Length with Spreading Tips: 36 inches (915 mm); Length without Spreading Tips: 34.8 inches (885 mm)
- Width: 8.7 inches (221 mm); Height: 11.6 inches (294 mm)
- Weight (excl battery with Spreading Tips): 59 lbs (26.8 kg); Weight ready to use: 61.4 lbs (27.9 kg)
- Max Spreading Distance: 15.6 inches (396 mm); Highest Spreading Force (HSF): 7,830 lbs (34.8 kN)
- Lowest Spreading Force (LSF): 6,460 lbs (28.7 kN); Max. Spreading Force: 320,000 lbs (1423.0 kN)
- Cutter Opening: 13.8 inches (351 mm) Cutter Rating: A7/B8/C7/D9/E8/F5



iCT716

iCT716	\$13,428
--------	----------

ION iC700 SHORT BLADE BATTERY CUTTER

A compact, all-metal body cutter tool designed to access tight spaces and require less room on the apparatus. The iC700 is powerful, fast, and ready to respond. It is powered by a DEWALT® FLEXVOLT™ 60 Volt battery that can be shared with other DEWALT tools like saws and drills.

SPECIFICATIONS

- Length: 32.7 inches (829 mm)
- Width: 8.7 inches (221 mm)
- Height: 11.6 inches (294 mm)
- Weight (excl battery): 53.8 lbs (24.4 kg)
- Cutter Opening: 5.8 inches (147 mm)
- Cutter Rating: A7/B8/C7/D9/E9/F4



iC700

iC700	\$12,606
-------	----------

ION iS290 SPREADER

With an all-aluminum body, the ION 29" Spreader (iS290) is one of the most durable and compact spreaders in the rescue market. Using a four-stage pump, this tool maximizes speed regardless of load conditions. The short profile allows users to quickly perform the most complicated extrication techniques.

SPECIFICATIONS

- Length: 35 inches (889 mm)
- Width: 9.7 inches (246 mm)
- Height: 11.3 inches (287 mm)
- Weight (ready to use, without tips): 44.7 lbs (20.3 kg)
- Weight (ready to use, with tips): 49.6 lbs (22.5 kg)
- Max Spreading Distance (with ERTs): 37 inches (939.8 mm)
- Highest Spreading Force (HSF): 9,830 lbs (4,459 kg)
- Lowest Spreading Force (LSF): 6,190 lbs (2,808 kg)
- Highest Pulling Force (HPF): 6,500 (2,948 kg)
- Lowest Pulling Force (LPF): 4,020 lbs (1,823 kg)



iS290

iS290 SPREADER	\$13,846
----------------	----------

Dräger

CASCADE FIRE EQUIPMENT IS A PROUD CHANNEL PARTNER OF DRÄGER

Cascade Fire Equipment specializes in the service and maintenance of SCBA's.

In our 37 years of business, we have assisted thousands of fire departments with their SCBA service needs. As a Dräger authorized distributor, we maintain the largest SCBA service facility on the west coast and employ several factory certified technicians. In addition to our service center, Cascade maintains a mobile service fleet that can provide on-site service for your department.

When using Cascade Fire Equipment for your SCBA service, you can rest assured that we have you covered.

CASCADE FIRE EQUIPMENT SERVICES

- **ON-SITE SCBA FLOW TESTING** – We come to you and perform your SCBA's annual flow test as required by OSHA. A multi-point inspection is performed by one of our factory certified technicians to ensure proper function of all components. Your flow test records are kept on our database and copies of any records can be provided at any time.
- **SCBA REPAIR** – Our service center is stocked with parts and several factory trained Dräger technicians are available to make any warranty or non warranty repairs needed. We are also available to assist you in troubleshooting any issues with your SCBA.
- **SCBA FACEPIECE FIT TESTING** – Facepiece fit testing is offered both on-site and through our rental program. A day can be scheduled with one of our sales representatives or service technicians to perform a quantitative fit test for your department. If your situation requires several days to accomplish a complete fit test, we offer weekly rentals of our fit test equipment.
- **COMPRESSOR SERVICE** – We offer several different levels of air compressory service, including quarterly air samples, routine service (oil, filters, etc.), and repairs.
- **GAS DETECTION SERVICE** – Our mobile service offers departments calibration service for your gas detection equipment. This is a great way to save on costly equipment that you only need a couple times a year. Let us take that cost and worry out of your hands.

GAS MONITORS



SINGLE-GAS DETECTION

DRÄGER PAC 6000

The DRÄGER PAC® 6000 disposable personal gas detector measures CO, H2S, SO2 or O2 reliably and precisely, even in the toughest conditions. The robust design, quick sensor response times, and a powerful battery ensure maximum safety for up to two years with virtually no maintenance required.

DRÄGER PAC 6000 CO, O2, & SO2 (US)	\$260
DRÄGER PAC 6000 H2S (US)	\$229

DRÄGER PAC 6500

The robust DRÄGER PAC® 6500 is your reliable companion under tough conditions. The personal single-gas detection device measures CO, H2S, SO2 or O2 quickly and precisely. Quick sensor response times and a replaceable battery also ensure safety.

DRÄGER PAC 6500 (CO, O2, H2S, OR SO2)	\$388
---------------------------------------	-------

DRÄGER PAC 8000

With the robust DRÄGER PAC® 8000, you'll be well equipped for tough conditions: this non-disposable, personal single-gas detection device is a reliable and precise instrument, which detects hazardous concentrations of twenty nine different gases, including special gases like NO2, O3 or COCl2.



Dräger PAC 6500

CALL FOR PRICING!

DUAL-GAS DETECTION

DRÄGER PAC 8500

The DRÄGER PAC® 8500 single-sensor detection device is a reliable and precise instrument even under the toughest of conditions. The detector can be equipped with a hydrogen-compensated CO sensor or a Dräger dual sensor. The dual sensors provide the option of measuring two gases at once: H2S with CO, O2 with CO, or H2S with O2.

8328265	DRÄGER PAC 8500 O2/CO-LC (US)	\$850
8327617	DRÄGER PAC 8500 CO-H2 CP (US)	\$765
8328263	DRÄGER PAC 8500 H2S LC/ CO-LC (US)	\$700



Dräger PAC 8500

MULTI-GAS DETECTION

DRÄGER X-AM 2500

DRÄGER'S X-AM® 2500 accurately detects O2, CO, NO2, SO2 and H2S and is the only 1-4 gas monitor you need in industrial and refinery applications. The X-AM® 2500 combines reliable sensor technology with long battery life and intuitive operation in an instrument that defines safety. It is approved for most markets including mining, oil & gas, chemical, fire and hazardous response, government and many other applications.

4542261	X-AM 2500 WITH CAT EX 125 PR, XXS O2, XXS CO-LC, XXS H2S-LC WITH NIMH BATTERY AND CHARGER KIT	\$1,090
---------	---	---------



Dräger X-AM 2500

DRÄGER X-AM 5000

The DRÄGER X-AM® 5000 belongs to a generation of gas detectors, developed especially for personal monitoring applications. This 1- to 5-gas detector reliably measures combustible gases and vapors as well as O2 and harmful concentrations of toxic gases, organic vapors, odorant and amine.

VN0016	X-AM 5000, EX/O2/CO/H2S/HCN, WITH NIMH BATTERY AND CHARGER KIT	\$2,105
--------	--	---------



Dräger X-AM 5000

DRÄGER X-SITE LIVE

Real-time scalable area monitoring. Benefit from up to 7 toxic and combustible gas detection plus radiation sensors in a convenient, easy to carry case. Remote visibility with unsurpassed communications capability enabled by FirstNet® integration.



**CALL US AT 1-800-654-7049
FOR PRICING AND
ADDITIONAL INFORMATION!**



SCAN TO REQUEST LIVE DRÄGER DEMONSTRATIONS

READY RACK EXTRACTOR WASHER 22



FEATURES OF EXTRACTOR WASHER 22

- Meets NFPA 1851:2020 Requirements
- Preprogrammed with NFPA 1851 recommended wash cycles
- Spin cycle G-Force: under 100 Gs
- Front load 22 lb capacity washes up to 4 pieces of turnout gear
- Durable commercial-grade unit
- Stainless steel inner tub limits cross-contamination
- Quick and easy soft-mount installation
- Runs on 120 volts (watts per load: 10-160 watt hours)
- Dimensions: 27.0" L x 30.5" D x 38.7" H
- Weight: 190.0 lbs



EW22	EXTRACTOR WASHER 22	\$5,195
------	---------------------	---------

EXTRACTOR WASHER 30

FEATURES OF EXTRACTOR WASHER 30

- Meets NFPA 1851:2020 requirements
- Preprogrammed with NFPA 1851 recommended wash cycles
- Spin cycle G-Force: under 100 Gs
- Front load 30 lb capacity washes up to 6 pieces of turnout gear
- Durable commercial-grade unit
- Stainless steel inner tub limits cross-contamination
- Quick and easy soft-mount installation
- Runs on 120 volts (watts per load: 110-160 watt hours)
- Dimensions: 29.0" L x 32.0" D x 40.8" H
- Weight: 221.0 lbs



EW30	EXTRACTOR WASHER 30	\$7,820
------	---------------------	---------

KEY HOSE

COMBAT SNIPER DOUBLE JACKET ATTACK HOSE

FEATURES OF COMBAT SNIPER

- True Internal Diameter of 1.78"
- Uniquely woven outer jacket, over extruded through-the-weave inner liner
- Designed for low pressure high volume nozzles
- More kink resistance than conventional attack lines
- Precisely engineered for tightly controlled water mapping, 90° left, right and up
- Built to last, packs well and designed with sufficient material to wear well over the expected service life
- 10-year warranty with a 1-year all hazards warranty



COMBAT SNIPER			
11627X50NH	1¾" x 50' NH	CPLD 1.5" NH	\$340



ELKHART BRASS XD SHUTOFFS

1.5" XD SHUT-OFF

AVAILABLE DISCHARGE SIZES
7/8", 15/16", 1", 1-1/16", 1-1/8", 1-3/16", 1-1/4"

MODEL	INLET	OUTLET	PRICE
1.5" SHUT-OFF FREE SWIVEL BASE	1.5"	1.5"	\$575

NOZZLE TIPS AVAILABLE
IN MANY SIZES

Tips	\$175
------	-------



1.5" XD SHUT-OFF

2.5" XD SHUT-OFF

AVAILABLE DISCHARGE SIZES
7/8", 15/16", 1", 1-1/16", 1-1/8", 1-3/16", 1-1/4"

MODEL	INLET	OUTLET	PRICE
2.5" SHUT-OFF FREE SWIVEL BASE	2.5"	1.5"	\$730



2.5" XD SHUT-OFF

- SPECIFY WHEN ORDERING:**
- Bale and Pistol Grip insert colors (black standard)
 - Inlet/Outlet threads
 - Integral Smooth Bore discharge size (if applicable)



ARCTIC COMPRESSORS

ARCTIC 1500 SERIES ENCLOSED COMPRESSOR

FEATURES OF ARCTIC 1500 SERIES ENCLOSED COMPRESSOR

- 14 CFM, 4 stage, 6,000 psi, 10 Horsepower motor with CO Monitor
- Two Cylinder fill station 5500 PSI certified with 4 Bank Cascade Control Panel
- Four 6000 PSI UN/ISO Cylinder with CGA-702 Valve – 540 Cubic feet
- 5 Year Gold Warranty



CALL FOR PRICING!

10HP COMPRESSOR, DOUBLE FILL STATION,
4 CYLINDERS, GOLD WARRANTY, & ACCESSORIES

CONTAINMENT FILL STATION WITH CONTROL PANEL

FEATURES OF CONTAINMENT FILL STATION WITH CONTROL

- NFPA 1901 5500 PSI certification
- One, two, or three tank capacity.
- Latching mechanism provides optional manual lockout capabilities.
- Four inlet connectors from cascade
- Fill hoses include a bleed valve and SCBA fill adapter
- Venting at back and bottom for operator safety
- 4 bank cascade controls
- 2 1/2" gauges for: each cascade cylinder and fill positions.
- 0-6000 PSI input, 0-6000 PSI output adjustable regulator with 2 1/2" gauges.
- 1 inlet connector from compressor.
- 1 auxiliary outlet with valve



CALL FOR PRICING!

ARCTIC COMPRESSOR CLASS 2 CONTAINMENT FILL STATION

ARCTIC COMPRESSOR IS PROUDLY MADE IN AMERICA.

AIR SAMPLING FOR BREATHING AIR COMPRESSORS LAB ON LOCALE (LOL) PORTABLE

FEATURES OF LAB ON LOCALE (LOL) PORTABLE

- Analytical reports are sent to the technician/customer generally within minutes.
- Logistical hurdles or time-sensitive needs are solved. No need to send sampling kits back and forth to a far off lab or between borders.
- Eliminate shipping costs associated with sampling kits
- Ability to conduct air tests before & after compressor servicing
- Tested to NPFA 1989 (2019) Standards



**CALL YOUR LOCAL SALES REPRESENTATIVE
TO GET SCHEDULED TODAY! 1-800-654-7049**

CALL US DIRECTLY OR ORDER ONLINE

PO Box 4248, Medford, OR 97501

800-654-7049

sales@cascafire.com

www.cascafire.com

FOLLOW US



@cascafire



@cascafire_equipment



Credit card at time of purchase or Net 30 with approved account. Minimum order is \$50. Prices subject to change without notice. Contact us before returning any items. If we have made an error, we will quickly replace the items in question. If it is the customer's error, a restocking charge may apply. Please contact our sales department for more information.