



D.O.T. APPROVED

# 12000 DRIP TORCH

OPERATING INSTRUCTIONS

MEETS USDA SPEC 5100-614A  
JUNE 11, 2009



## CAUTION

Use of firing equipment should be restricted to trained, experienced personnel, who will take precautions to avoid danger to themselves and others. Keep torch in good order, inspect periodically and replace worn or missing parts. Handle all petroleum products with the same precautions as when handling gasoline.

**Before using** inspect all parts of Drip Torch to ensure the Drip Torch is in good working order. Look inside tank and make sure breather tube is secure. Before lighting, turn Drip Torch over to ensure that breather tube, tank collar gasket, spout and fuel trap, are not leaking fuel. Fuel should only discharge from nozzle on to the igniter. If leaks are detected, remove Drip Torch from service until unit can be repaired.

## FUEL

Refer to your Agency or Bureau policy regarding the type of fuel mixtures to be used.

## STARTING

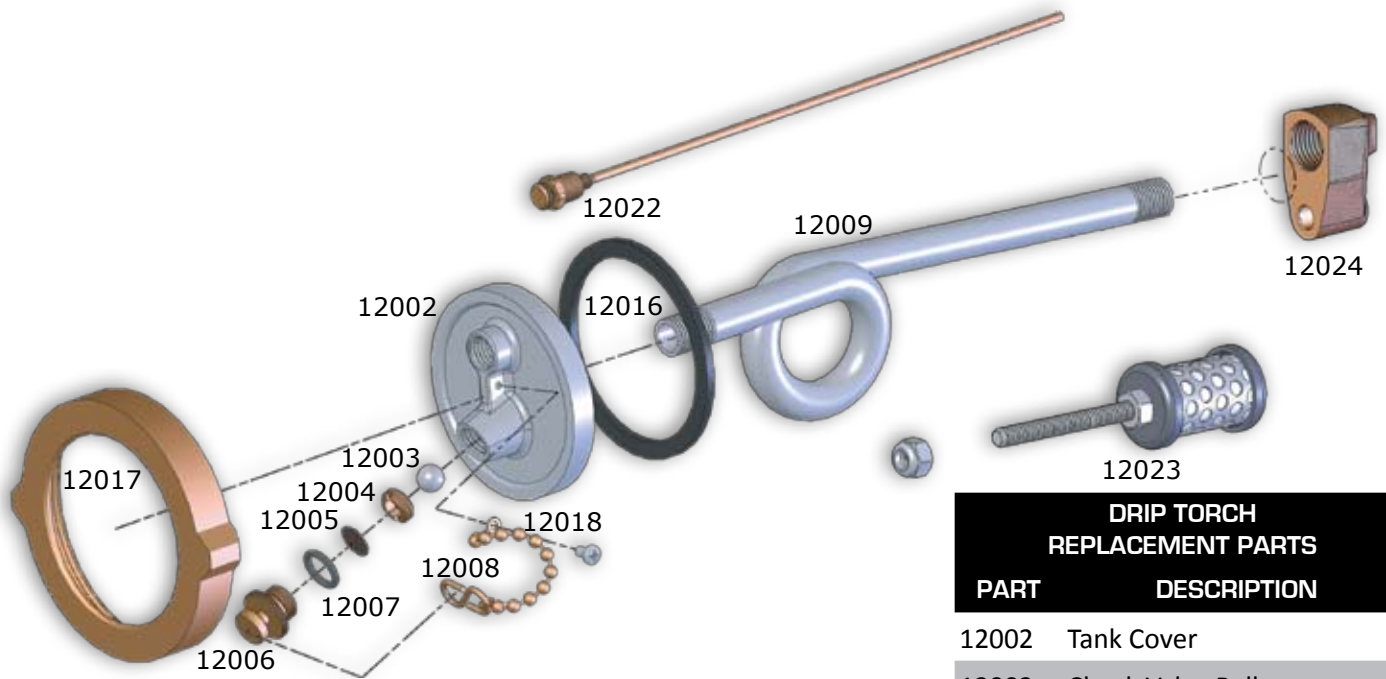
Fill the torch, leaving a 2" space at top, which allows for fuel expansion. Do not fill near open flame or other ignition source. Wipe off outer surface of tank and handle. Remove discharge plug and insert in blind socket. Open breather valve two full turns. Tip torch forward, allowing fuel to wet igniter. Light igniter, drip torch is ready to use.

## STORAGE/CLOSURE AFTER USE

Extinguish igniter by allowing it to burn out. After igniter has cooled completely, remove lock-ring and reverse the spout inside the tank. Replace lock-ring securely by twisting on to Drip Torch, contact with gasket plus half turn. Insert the sealing plug, from the blind threaded socket, into the spout opening. Close the breather valve.

**CASCADE FIRE EQUIPMENT COMPANY**

# DRIP TORCH REPLACEMENT PARTS



DRIP TORCH REPLACEMENT PARTS	
PART	DESCRIPTION
12002	Tank Cover
12003	Check Valve Ball
12004	Check Valve Seat
12005	Outlet Screen
12006	Discharge Sealing Plug
12007	Discharge Plug Gasket
12008	Discharge Plug Chain
12009	Spout and Fuel Trap
12016	Tank Collar Gasket
12017	Tank Cover Lockring
12018	Chain Screw
12022	Breather Tube Assembly
12023	Igniter
12024	Nozzle



*For ordering information, contact:*

**CASCADE FIRE EQUIPMENT COMPANY**

PO Box 4248 ■ Medford, OR 97501

800-654-7049 ■ 541-779-0394 ■ Fax 541-779-8847

www.cascadefire.com ■ sales@cascadefire.com