



# Solinst Levelogger 5 Series 3001 High Quality Groundwater and Surface Water Monitoring User Guide

[Home](#) » [Solinst](#) » Solinst Levelogger 5 Series 3001 High Quality Groundwater and Surface Water Monitoring User Guide 

*Solinst Levelogger 5 Series 3001 High Quality  
Groundwater and Surface Water Monitoring  
User Guide*

# *Quick Start Guide*

Levelogger 5 Series



*High Quality Groundwater and Surface Water Monitoring Instrumentation*

---

## Contents

- 1 Installing the Software
- 2 Installing the Hardware
- 3 Programming the Levelogger
- 4 Starting and Stopping the Levelogger
- 5 Downloading and Working with Data
- 6 Real Time View
- 7 Compensate the Data
- 8 Levelogger Field Measurement
- 9 Levelogger Field Notes
- 10 In-field Communication
- 11 Maintenance
- 12 Troubleshooting Guide
- 13 Documents / Resources
- 14 Related Posts


## Installing the Software

To begin using your Levelogger, download the newest version of Levelogger Software and User Guide by visiting: [www.solinst.com/downloads/](http://www.solinst.com/downloads/)

## Installing the Hardware


Connect your datalogger to a computer using either the Optical Reader (Desktop Reader 5 or Field Reader 5) or PC Interface Cable.



**Note:** If you are using an old style Optical Reader or Direct Read Cable with a  Levelogger 5 Series datalogger, you will need to use an L5-Edge DRC Adaptor.

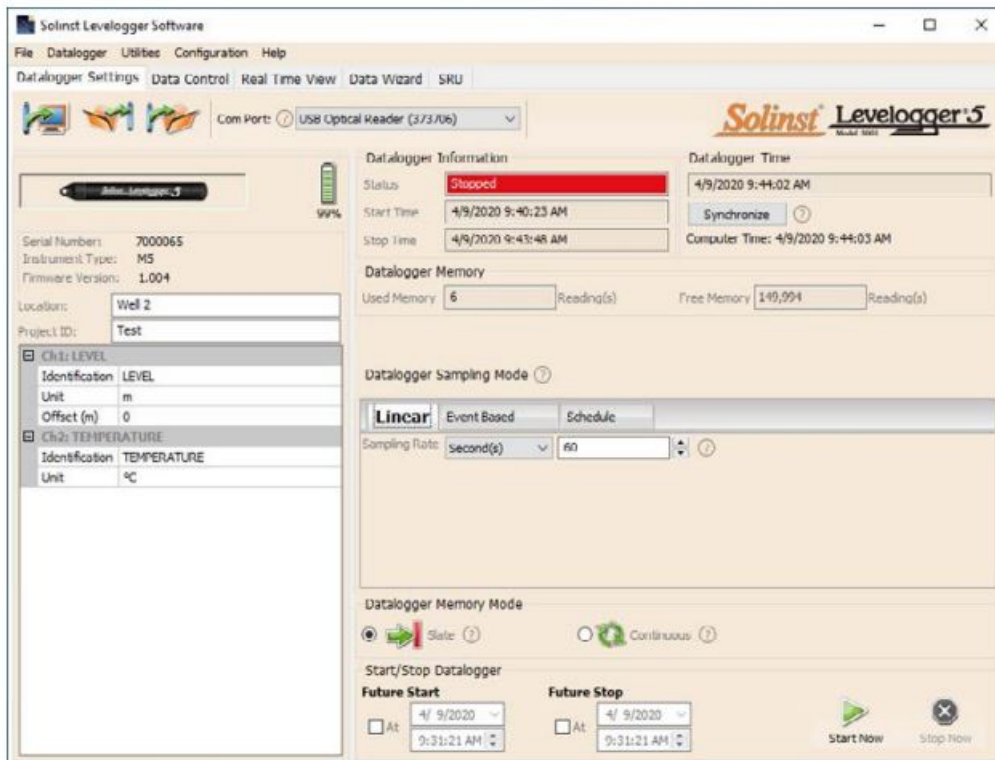
## Programming the Levelogger

Note: Ensure the Levelogger is operating with the latest firmware, and that you are using the latest software. Visit the Solinst website ([www.solinst.com/downloads/](http://www.solinst.com/downloads/)) or use the update notifications in the software for assistance. If older Levelogger versions are used, refer to our Compatibility Chart on the Downloads page.

1. Connect the Levellogger to the communications device and start the software.
2. Select the appropriate Com Port for the connected communications device from the centre drop-down menu.
3. Click the 'Retrieve Settings from Levellogger' icon. This will retrieve and display information about the connected datalogger, and any current programmed settings .
4. You can now customize the Levellogger including your Project ID, Location, Sampling Mode and Rate, and Future Stop and Start times.



**Tip:** If a number of Levellogger are to be programmed with identical inputs, clicking the 'Save Default Settings' icon will create a template.



*Datalogger Settings Window*

**Note:** Clicking on the in the software will provide you with a short explanation of that feature, e.g. Com Port, Slate Mode, Time Synchronization, etc.

### Rainlogger 5 Programming

The Rainfall Calibration Constant 'value' of the tipping bucket rain gauge used with the Rainlogger is required when programming the Rainlogger 5. Consult the Levellogger User Guide for more information on programming the Rainlogger 5.




### Levellogger 5 LTC Calibration

Before deploying your Levellogger 5 LTC, be sure to calibrate the instrument. To begin calibration, open the 'Conductivity Cal' tab and follow the steps provided. Consult the Levellogger User Guide for more information, or view the LTC Calibration Video on our YouTube Channel: <https://www.youtube.com/user/SolinstCanadaLtd>



## Starting and Stopping the Levellogger

1. If desired, enter a Future Start and/or Future Stop Time. To start logging immediately, do not fill in a future start time and click the `Start Now` icon .

**Note:** When the `Start` icon is selected, a window will pop-up to indicate how much memory is available. Selecting “Yes” ignores the message and starts the datalogger immediately. Selecting “No” gives you the chance to access the `Data Control` tab to download and/or delete data files using the `Download and Delete Files` option, to free-up memory.


2. When “Yes” is selected, all settings are applied to the Levellogger and it will start logging at the specified time.

3. To stop the Levellogger immediately, click the `Stop Now` icon .

**Tip:** The `future start` and `future stop` options are ideal for synchronizing the data collection of multiple Levellogger and Bar loggers.

## Downloading and Working with Data

1. Click the `Data Control` tab to access the `Data Control` window. This window is laid out in three sections: Levellogger settings, tabular data, and graphical data.
2. To download the data from a connected Levellogger, select the `Download Data from Levellogger` icon. There are four options for downloading data. They are: All Data, Append Download, Partial Download and Download

and Delete Files. The data will be presented in both tabular and graphical format. 

**Note:** The default directory for downloaded and saved data is in the `Data` folder:

<C:\ProgramFiles\Solinst\Levellogger 4\_6\Data>. Data is saved as a .axle data file.

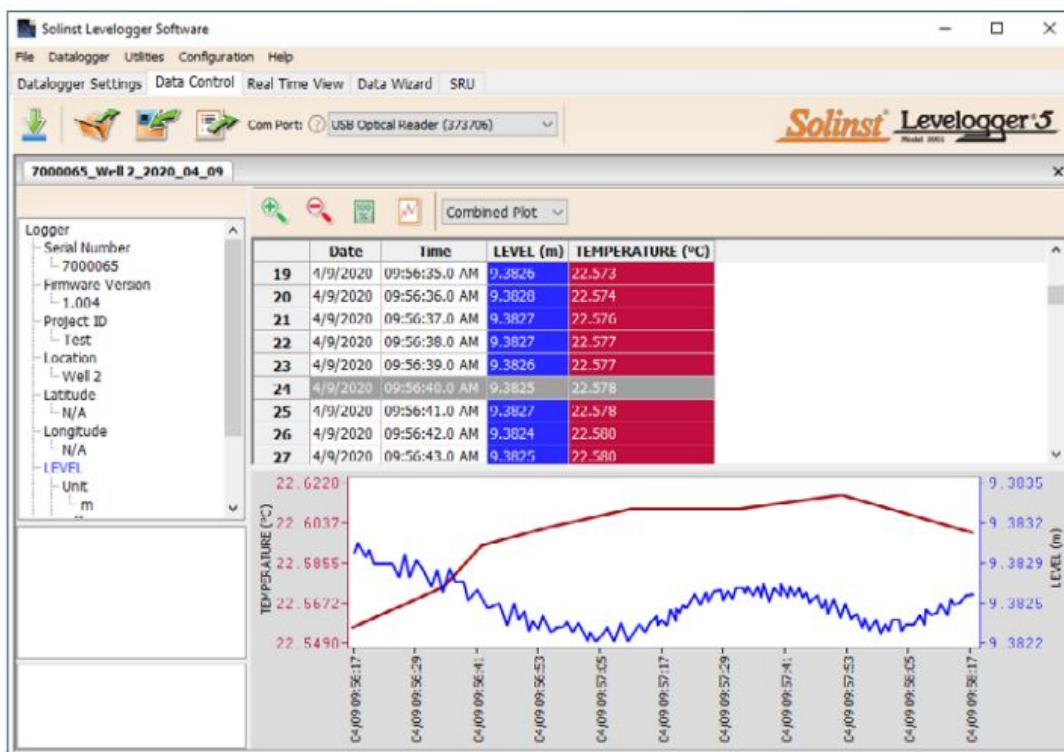
3. To save data, click the `Save Data` icon and input desired name for the saved file.
4. To export the file for use in other software, click the `Export` icon. The file can be exported to a \*.csv or \*.xml file.



**Note:** To change the default directory for downloaded data, use the `Configuration` menu at the top of the software window. Select `Application Settings` and input or navigate to a different folder destination. Click `OK`.

**Tip:** The \*.csv and \*.xml file formats are supported and can be imported by most spreadsheet and database programs.

The data graph can be exported to a \*.bmp file or a \*.png file by clicking File > Export >Graph.



Data Control Window

## DataGrabber 5

Connect a DataGrabber 5 to an in-field Levelogger via an L5 Direct Read Cable or L5 Threaded or Slip Fit Adaptor, and transfer data to a USB key.



## Solinst Readout Unit (SRU)

Connect an SRU to an in-field Levelogger via an L5 Direct Read Cable or L5 Threaded or Slip Fit Adaptor to display instant water level readings, Levelogger status, save a real-time logging session, and download data to the SRU memory.



## Real Time View

Real Time View provides on-screen measurement as data is being recorded by the connected datalogger. A view rate is set independently of the logging period of the Levelogger and does not interfere with internal logging taking place. To take a reading at any specific time, click and that reading will be added to the displayed data. The data can be exported and saved.

## Compensate the Data

Click the 'Data Wizard' tab to open the 'Data Wizard' window. In this window the 'Wizard' will guide you through Barometric Compensation, Manual Data Adjustments, and Parameter Adjustments on your open data files. There are two convenient options; Basic or Advanced compensation. This allows you to choose just one, two, or all three types of compensation. Multiple Levelogger files can be barometrically compensated at once, using one open Barologger file.

**Tip:** 'Manual Data Adjustment' allows you to use manual water level measurements to adjust your data to depth to water readings.

## Levelogger Field Measurement

## Levelogger 5 Ranges

Each model of Levelogger is rated for a specific submergence depth (Table 1). The choice of model largely depends on the accuracy of the water level required and the submergence depth. The selection, however, should be based on the maximum anticipated water level fluctuation.

Model	Submergence Depth	Accuracy
Barologger	Air only	± 0.05 kPa
M5	5 m (16.4 ft.)	± 0.3 cm (0.010 ft.)
M10	10 m (32.8 ft.)	± 0.5 cm (0.016 ft.)
M20	20 m (65.6 ft.)	± 1 cm (0.032 ft.)
M30	30 m (98.4 ft.)	± 1.5 cm (0.064 ft.)
M100	100 m (328.1 ft.)	± 5 cm (0.164 ft.)
M200	200 m (656.2 ft.)	± 10 cm (0.328 ft.)

**Table 1 – Levelogger 5 Ranges**

### Measurement Fundamentals

Levelogger (L) measure the total pressure acting on a transducer at their zero point/sensor. The total pressure is caused by the column of water lying above the Levelogger pressure sensor AND the barometric (atmospheric) pressure acting on the water surface. To compensate for barometric pressure fluctuations and get true height of water column measurements (H), a Barologger (B) is required, i.e.:

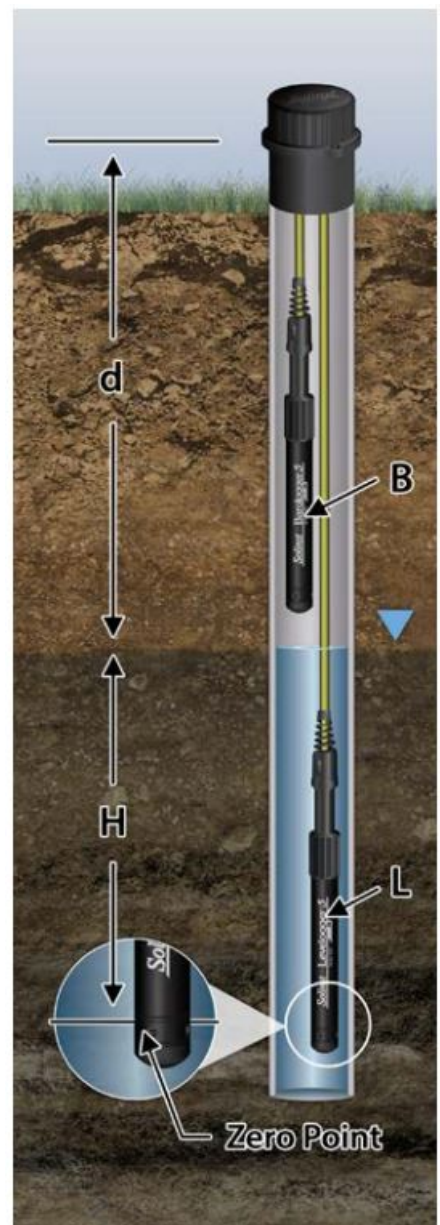
Levelogger Reading (L) Barologger Reading (B) = Height of Water Column (H)

### Verifying Readings

The best recommendation is to compare barometrically compensated Levelogger data (H) with a manually measured depth to water level value (d) (using a Water Level Meter).

**Tip:** To adjust all readings in your Levelogger file to depth to water below a well casing (d), record a manual water level measurement using a water level meter. This reading should correspond in date and time with an actual Levelogger recording. Use this as a reference datum in the Manual Data Adjustment option in the Levelogger Software Data Wizard.

**Note:** The Levelogger 5 can withstand over-pressurization of 2 times the intended range, e.g. a Model M10 can accommodate a fluctuation of 20 meters or 60 feet and still record pressure. However, over-range accuracy is not guaranteed.



A single Barologger 5 can be used to compensate all Leveloggers on site, within a 30 km/20 mile radius and with every 300 m (1000 ft.) change in elevation. Ensure that your Barologger will start logging within at least 3 hours of your Levelogger start time.



### Levelogger Field Notes

**Tip:** It is recommended to take a manual water level measurement before installing a Levelogger, shortly after installation, periodically during your monitoring interval, and at the end of your measurement period. Use these measurements to verify Levelogger readings, and for data adjustments later on. Ensure you take manual readings as close in time as possible to a scheduled Levelogger reading.

## Before Deployment

Before deployment, make sure you do the following:

- Program your Levelogger, using Levelogger Software, with the correct project identification, memory mode, sampling regime, time, etc.  
**Note:** It is useful to synchronize the times of all Leveloggers and Barologgers being used for the same project.
- Set a future start time, or start the Levelogger if deploying on a wireline/Kevlar cord (Leveloggers can be started after deployment if using an L5 Direct Read Cable)
- Determine borehole depth to ensure the Levelogger does not touch the bottom of the well (avoid submergence in sediment)
- Determine the minimum and maximum expected water levels, as Leveloggers must remain submerged for the entire monitoring period, and Barologgers must not be submerged
- Use a Solinst Model 101 or 102 Water Level Meter to take a manual depth to water measurement that will be used to verify Levelogger readings



Wireline/Cord Deployment



Direct Read Deployment

## Deployment

- Deploy your Levelogger and Barologger using an L5 Direct Read Cable for down-well communication, or use an inexpensive wireline or Kevlar cord.  
**Note:** For information on other types of installations, see the latest Levelogger User Guide.
- Install the Barologger in a similar thermal environment as the Levelogger
- The Barologger should be suspended beyond the frost line and deep enough to avoid large temperature



fluctuations

- Ensure the Barologger location is vented to atmosphere

### **After Deployment**

After deployment, make sure you do the following:

- Take a manual depth to water measurement after the well has stabilized (approximately 10 minutes)
- Take another manual depth to water measurement just before removing the Levelogger from the well

### **Well Caps**



The Model 3001 2" (or 4" with Adaptor) Well Cap Assembly provides a secure method of installing your Levelogger using wireline/Kevlar cord or L5 Direct Read Cables. A Support Hanger Bracket is available for supporting and organizing down well wires or cords, or for coiling extra L5 Direct Read Cable lengths.



### **In-field Communication**

If you have installed your Levelogger using wireline/Kevlar cord, you can communicate with your Levelogger via a Field Reader 5 or Desktop Reader 5 and Levelogger Software on a laptop PC (you can also use an older style Optical Reader with an L5Edge DRC Adaptor). If you have installed your Levelogger using an L5 Direct Read Cable, you can communicate with your Levelogger via a PC Interface Cable and Levelogger Software on a laptop PC, using a Levelogger 5 App Interface and the Solinst Levelogger App on your mobile device, or connect an SRU or a DataGrabber 5, without removing the Levelogger from the well.



Field Reader 5



Desktop Reader 5



PC Interface Cable



Levelogger 5 App Interface



SRU



DataGrabber 5



**Note:** An L5 Threaded or Slip Fit Adaptor can be used to directly connect a Levelogger to a Levelogger 5 App Interface, SRU or DataGrabber 5.

## Maintenance

As with any monitoring project, you should select the proper equipment and determine a maintenance schedule based on the environment specific to your application.

Maintenance tips include:

- Inspect regularly, and replace the ORing at the optical end of the Levelogger if damaged
- Clean the optical eye of the Levelogger with a clean, soft cloth or cotton swab
- Rinse the Levelogger body using a mild, non-residual, non-abrasive household cleaner
- Use a very soft-plastic bristled brush, if needed, to clean the Levelogger body
- Do not insert any object through the circulation holes at the sensor end of the Levelogger

- See the Levellogger User Guide Maintenance Section if simple household cleaners are not sufficient for certain issues, such as hard water build up
- Clean Levellogger 5 LTC conductivity sensor pins before calibration and before/after deployment—see the Solinst Levellogger User Guide
- Stop the Levellogger from recording before storing
- Store Levelloggers with the installation cap on and in the case they were originally provided in
- Store Levelloggers in above-freezing conditions
- Read our Technical Bulletin “Ensuring Proper Use and Maintenance of Levelloggers”

**Note:** A Solinst Bio foul Screen can be used to protect the Levellogger 5 from biofouling on the pressure sensor, and the conductivity cell of a Levellogger 5 LTC.



**Note:** All Levelloggers should be deployed and stored with the installation cap or L5 Direct Read Cable attached. This prevents unnecessary battery drainage and protects the optical eye.

## Troubleshooting Guide

### Levellogger Software:

1. You must have administrator privileges to install software on a computer.
2. The Windows 10 Operating System supports Levellogger Software.

### Communication Errors:

“Port Cannot Open”, “Check Com Port”

1. Reason: Software was started before USB device was connected to computer.  
Solution: Restart computer, connect USB device, start software.
2. Reason: Incorrect Com Port is selected in Com Port selection menu.  
Solution: Check the Com Port location for the installed device, by accessing the ‘Device Manager’ (through the Control Panel), and selecting the “Ports” section. This will state the Com Port the device is installed on.
3. Reason: Another device shares the same Com Port or is causing a communication conflict.  
Solution: Ensure that software for PDA or other devices, which automatically synchronize, are disabled. Ask your system administrator for assistance.

### “Communication Time-Out”, “Communication Error”

1. Reason: Levellogger, Direct Read Cable, or communications device has failed. Solution:
  - a) Narrow down the failure by using a different Levellogger, Direct Read Cable, or another communications

device.

- b) Clean the optical eye/lens on the Levelogger and Optical Reader (Desktop Reader 5 or Field Reader 5), or L5 Direct Read Cable, with a soft cloth.
- c) Check that the communication cable is connected to the same Com Port that is chosen in the upper middle of the Levelogger Software window.
- d) Try using a different computer, to see if this is the cause of the problem.
- e) If using a laptop (especially in conjunction with a Direct Read Cable) your Com Port may not be powered adequately to receive/transmit data. Try using a desktop computer to test this.
- f) If problem persists, contact Solinst.

## **Frequently Asked Questions**

(Also see <https://www.solinst.com/products/dataloggers-and-telemetry/3001-levelogger-series/levelogger-faq/levelogger-faq.php>)

### **How can I protect my Levelogger from corrosive or marine environments?**

The Levelogger 5 and Levelogger 5 LTC have a corrosion resistant coating. In harsher chemical environments, you can protect the Levelogger using a thick membrane balloon (e.g. helium) filled with non-corrosive/non-toxic fluid (tap water). As pressure changes, the fluid encasing the dataloggers will transmit the pressure differential to the datalogger's pressure transducer, without exposing it to corrosive conditions. Continual monitoring is recommended to assess the effectiveness of the protection at your site.

### **How do I install my Levelogger in a surface water application?**

For installations within rivers, streams, wetlands, lakes and watershed or drainage basin monitoring, the shallow pressure range (M5) Levelogger 5 or Levelogger 5 Junior should be considered. For installation in streams or rivers, stilling wells can be constructed which shield the instrument from the water turbulence. Alternatively, Leveloggers can be lowered into a protective pipe or casing and then attached to a permanent fixture such as a bridge, pier or hand driven marker/rod.

### **How do I protect my Levelogger from freezing?**

To avoid icing/freezing and transducer damage, the easiest method is to lower the transducer to a point in the water column below the frost line or ice formation depth. In water bodies such as shallow streams, wetlands or ponds where icing/freezing may penetrate to the bottom, install the Levelogger in a vented stilling well imbedded into the bottom of the water body beyond the frost line.

If this is not possible, place the Levelogger inside a thick membrane balloon filled with a nontoxic, non-corrosive anti-freeze solution or saltwater solution. Place the balloon in a section of perforated, 30 mm (1.25") ID pipe and install the datalogger in the monitored water. The antifreeze solution will protect the Levelogger from ice expansion at the pressure transducer, yet transmit any pressure and temperature fluctuations that occur.

### **How do I protect my Levelogger from biofouling?**

Use the Solinst Model 3001 Bio foul Screen.

### **Is Levelogger maintenance required?**

Yes, consult the Solinst Technical Bulletin "Ensuring Proper Use and Maintenance of Leveloggers" to maintain the long life of your instrument, based on the monitoring environment specific to your application.

(#114998) June 24, 2021

@Solinst is a registered trademark of Solinst Canada Ltd.


Solinst Canada Ltd. 35 Todd Road, Georgetown, Ontario Canada L7G 4R8 Tel: +1 (905) 873-2255; (800) 661-2023

Fax: +1 (905) 873-1992

E-mail: [instruments@solinst.com](mailto:instruments@solinst.com)



## Documents / Resources

 The image shows the cover of a user guide. At the top left is the Solinst logo. Below it, the text reads "Quick Start Guide" and "Levellogger 5 Series". The central part of the cover features four levelloggers stacked vertically. At the bottom, there is a large orange number "5" and the text "High Quality Groundwater and Surface Water Monitoring Instrumentation".	<p><a href="#">Solinst Levellogger 5 Series 3001 High Quality Groundwater and Surface Water Monitoring [pdf] User Guide</a> Levellogger 5 Series, 3001, High Quality Groundwater and Surface Water Monitoring</p>
---	---

[Manuals+](#)