



## WORX RACING SEADOO AIR FILTER

**PART # - WR04067-KF**

**MODELS: 2020 GTR 230**

### **INSTALLATION INSTRUCTIONS**

1 x WR04035 4-inch Seadoo 4 Tec Supercharger Adaptor  
1 x WR04020-2 Billet Air Filter Bracket 4 inch  
1 x WR04020-5 Air Filter 4 inch  
1 x WR04020-6 Air Filter 1 inch with hose clamp  
3 x 4-inch hose clamps  
1 x WR04048-5 Mounting Bracket  
1 x 575mm of Air Filter Hose  
1 x M8x25mm Button Head  
1 x M8 washer  
1 x M8 Nyloc Nut

### **IMPORTANT: READ ALL INSTRUCTIONS BEFORE PROCEEDING WITH INSTALLATION**

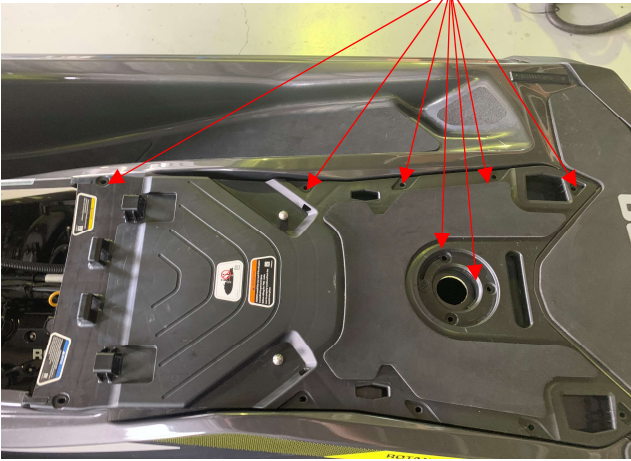
- 1- Make sure ski is secure and on a flat surface. Remove lanyard and disconnect battery.
- 2- Pull the rear plastic and seat housing off the ski.
- 3- Disconnect engine breather hose from intake. Remove OEM air intake hose from supercharger and off second air filter hose. **NOTE its your choice if you want to pull the full hose out from OEM filter box.**
- 4- Fit WORX supercharger adapter. Add Loctite to 2 bolts and secure. **TIP have the adapter in a 45-degree angel while putting the first bolt in enough so it won't fall out, then spin it athe adapter around and put the second one in and tighten both up as you can reach both.**
- 5- Conect the 4-inch adapter to the mounting bracket before fitting to the ski. **Tip for best fit we recommend putting it in the left positioning point on the adapter**
- 6- Drill hole position for side mounting bracket location. **Note the measurements for hole locations are on final page**
- 7- Bolt mounting bracket to the ski with the M8x25mm bolt, washer and nut throught the drilled hole
- 8- Connect the hose presided to the supercharger adapter on one side and have the other side on connect to the 4-inch adapter and tighten with hose clams provided.
- 9- Finally put on the pod filter to the 4inch adapter and tighten with hose clamp. Place the breather filter on the breather hose you pulled of first and place in any position where the hose is not creased/ bent on itself.

Thank you for purchasing **Worx Racing components** products. We firmly believe that **Worx Racing Components** products are among the finest watercraft parts available. A great deal of time and effort has gone into the design and development of this product to ensure that it will perform to the highest standard and that installation is a relatively straight forward and simple procedure. If you have any questions or comments on the performance and/or installation of our products please contact us at the numbers listed on page one or through your local **Worx** dealer.

1

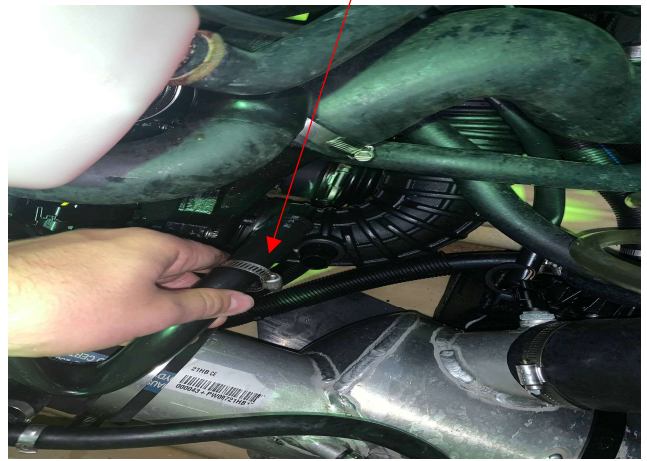
Pull both seats off

Unscrew both bolts with torx screwdriver pull panel off NOTE the front 2 bolts have 10mm nut and washer



2

Pull hose off and fit breather filter onto the hose



3

Loosen hose clamp and pull hoses off supercharger



4

Loosen hose clamp



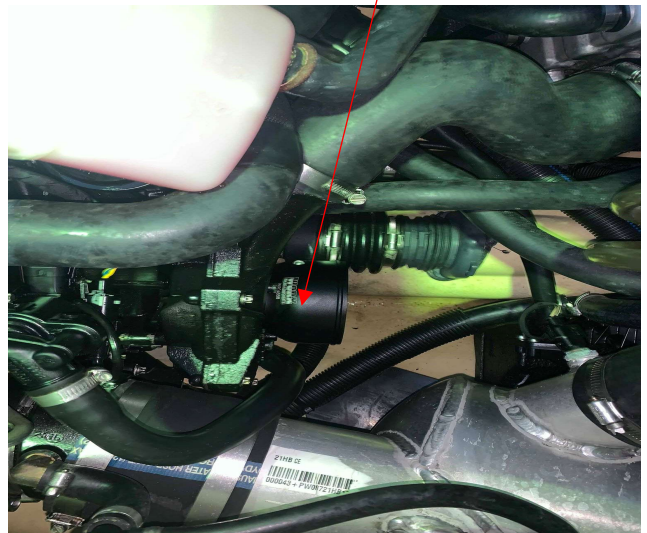
5

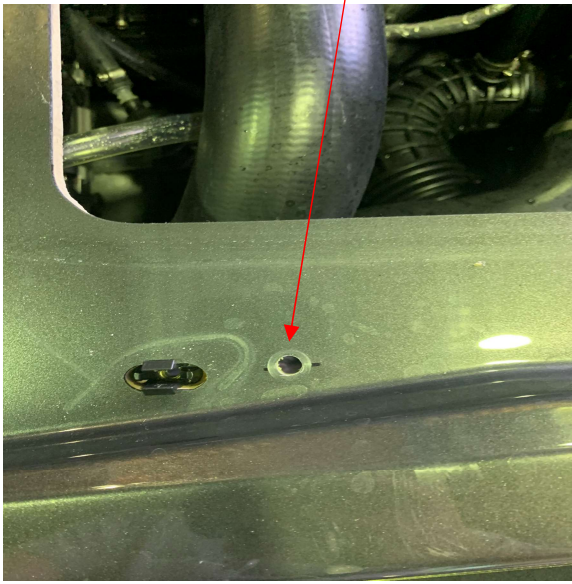
Pull air filter hose out of ski



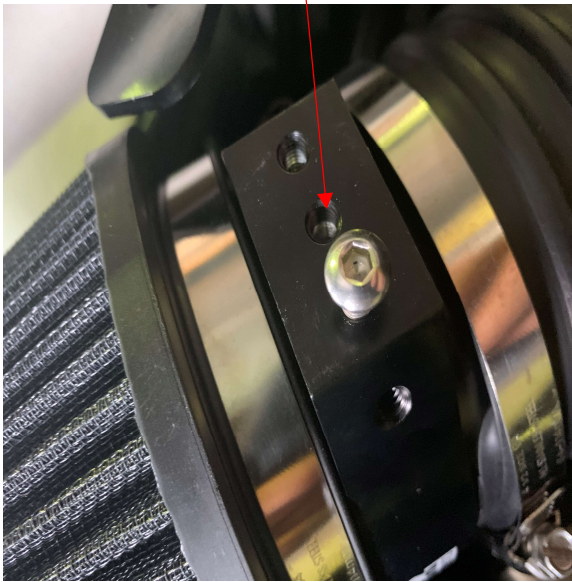
6

Fit supercharger adapter



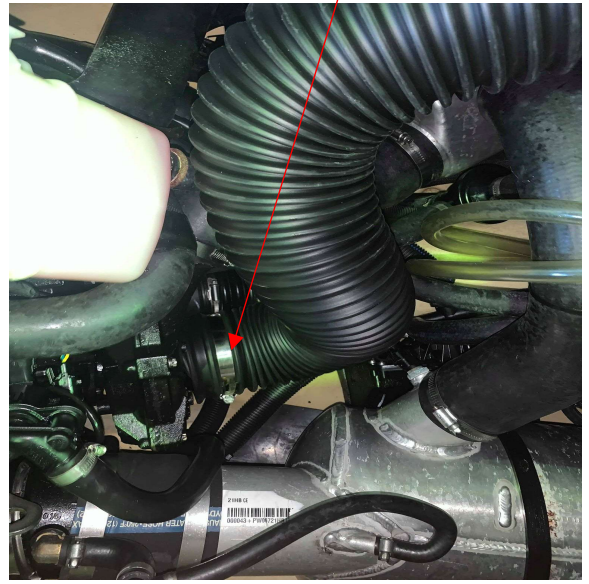


9 Install the 4-inch adapter using the left threaded hole as per Diagram to the mounting bracket



11

Once airfilter kit is fitted reinstall the rear cover and seats



10 Fasten the other side of the flexible hose to the air filter adaptor and mount the adapter to the hull



# Dimensions for drilling the hole

