

# WORX

## RACING COMPONENTS

### WORX RACING YAMAHA 1.8 BOV KIT

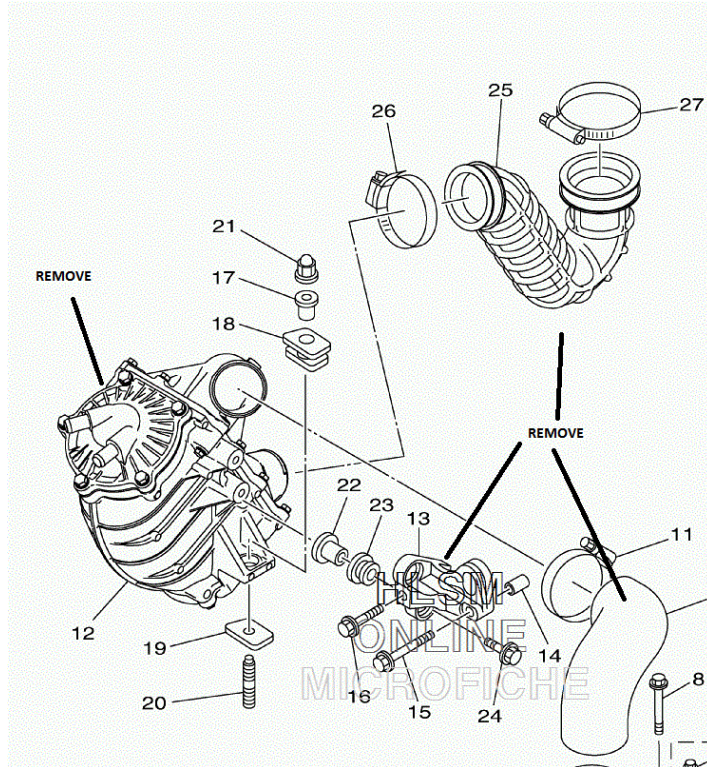
PART # - WR01007

MODELS: YAMAHA 1.8 SUPERCHARGERD MODELS

### INSTALLATION INSTRUCTIONS

IMPORTANT: READ ALL INSTRUCTIONS BEFORE PROCEEDING WITH INSTALLATION

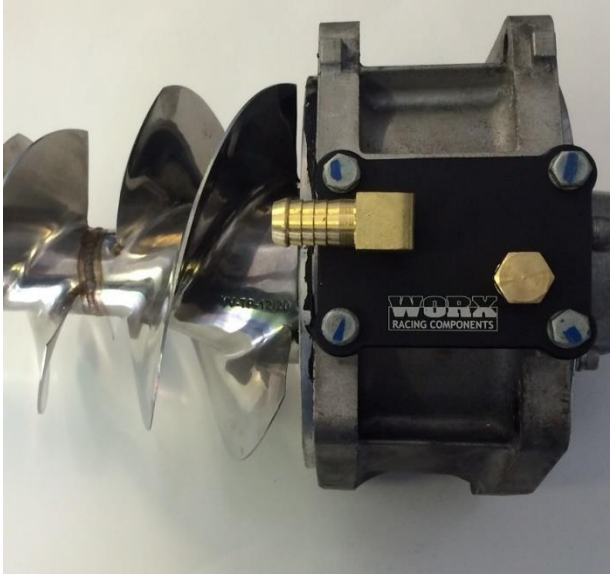
- 1- Make sure ski is secure and on a flat surface. Remove lanyard and disconnect battery.
- 2- Remove Engine lifting bracket, intake manifold and OEM intercooler from ski.



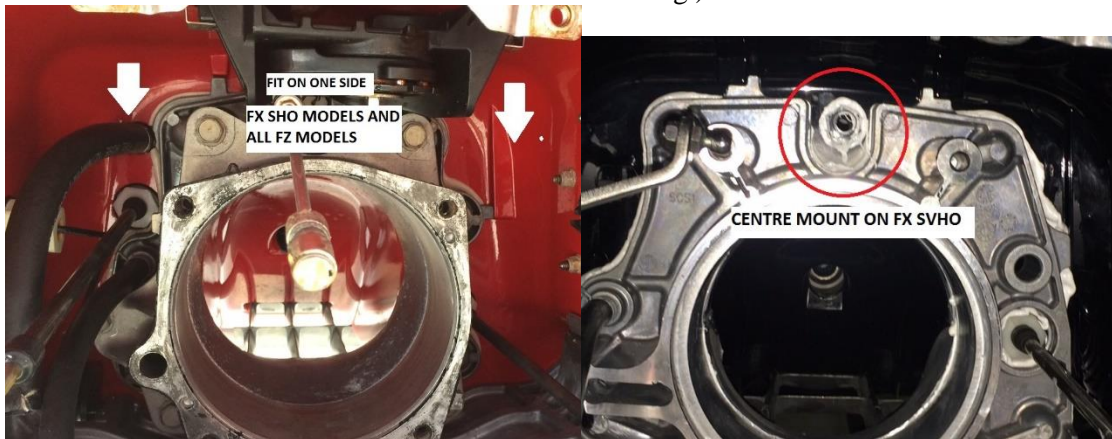
- 3- Fit brass 90 degree brass fittings to top and bottom of intercooler core using sealant. Have bottom fitting pointing toward rear of ski and top fitting pointing to the front of the ski.
- 4- Fit BOV to intercooler core using M6 x 16 button, M6 spring washers and gasket. Face BOV spout to same side as mounting bracket on core (towards exhaust side of ski).
- 5- Fit Bottom bracket to intercooler core using M6 x 20 Socket bolts and M6 spring washers. Use Loctite. Use OEM rubber grommet, collar and plate to fit into cooler bracket.



- 6- Remove jet unit and fit new cooling plate to side of the jet unit.



- 7- Fit 1/2 inch fitting to cooling plate with sealant. Drill 16mm hole thru transom to fit 1/2 inch thru hull fitting. Fit with sealant. (Thru hull fitting is best fitted towards the top of the tunnel). Either left or right side on FZ models and FX non RiDE models and centre on FX SVHO RiDE models. Make sure inside ski is clear before drilling.)



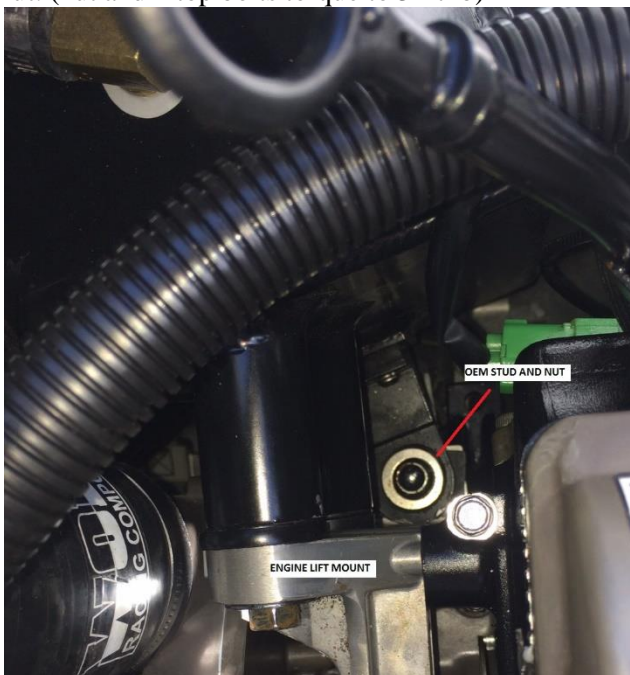
- 8- Refit jet unit and fit 1/2 inch hose between pump plate and thru hull fitting. Secure with hose clamps.
- 9- Fit 1/2 inch hose to thru hull fitting on side of ski. Route hose thru to fit on bottom on intercooler. (see cooling diagram)
- 10- **NOTE: Be sure to block existing intercooler cooling line if not used for engine cooling. Failure to do this could cause ski to sink.**

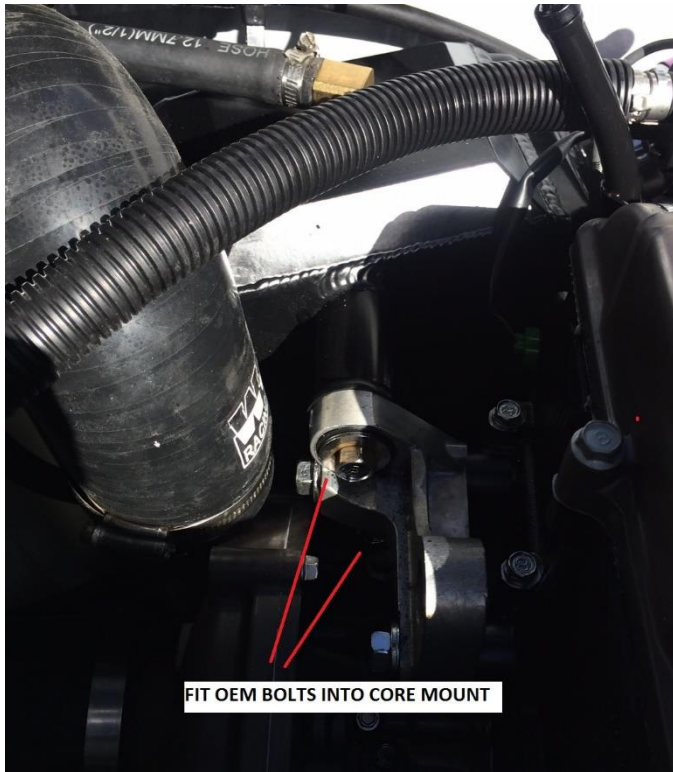
- 11- Fit bottom intercooler hose to intercooler core and secure with hose clamp. Before lowering intercooler into ski fit  $\frac{1}{2}$  waterline to bottom of core and secure with clamp.



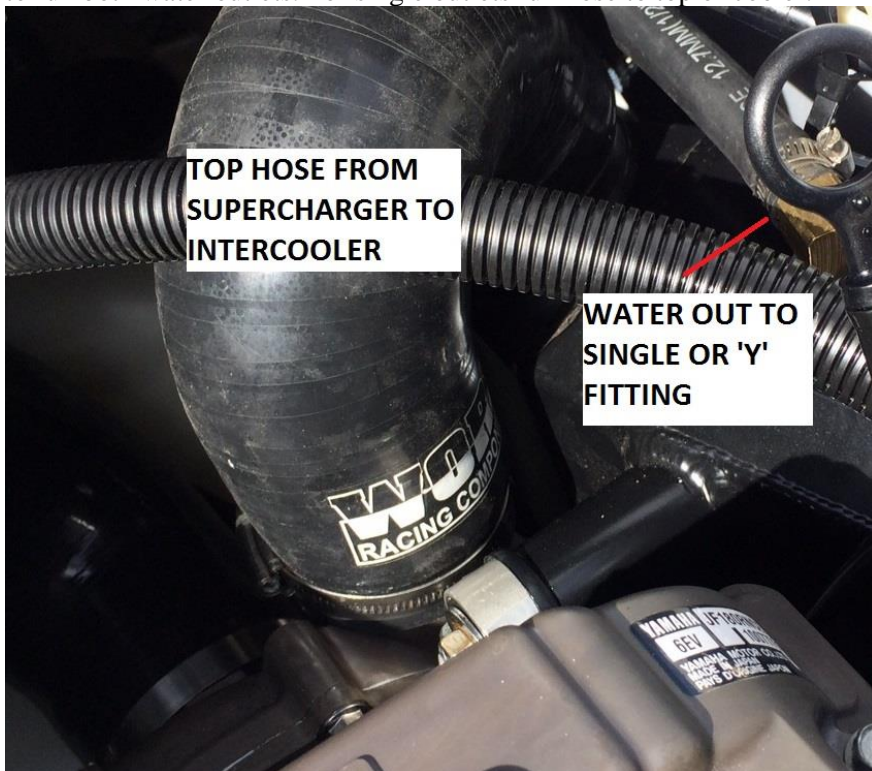
- 12- Lower cooler into ski next to engine where intake manifold sits and move forward into position.

- 13- Fit bottom bracket over OEM stud on and fit OEM nut. Refit top engine lifting bracket to front of engine. Secure intercooler core to bracket with OEM bolts. Use Loctite. Tighten bottom nut. (nut and 2 top bolts torque to 31ft lb)

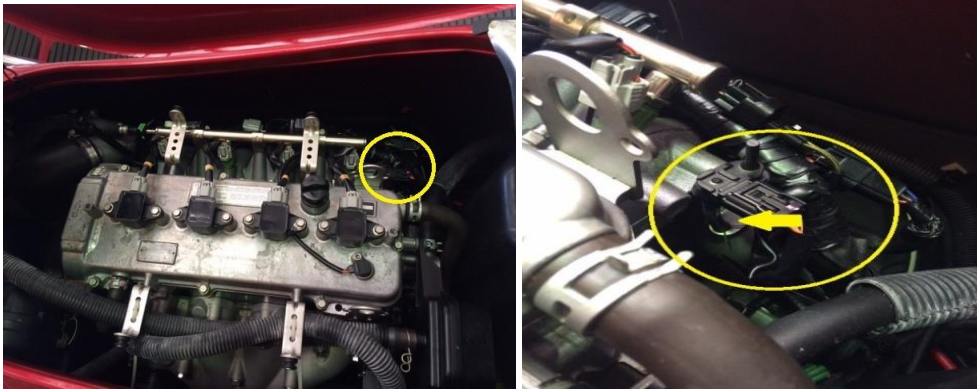




- 14- Refit intake manifold to ski. Be sure to fit bottom intercooler hose onto throttle body while fitting manifold. Secure with hose clamp onto throttle body.
- 15- Fit OEM waterline to top of cooler. SVHO units have a dual water out. Use 'Y' piece supplied to run both water outlets. For single outlets run hose to top of cooler.



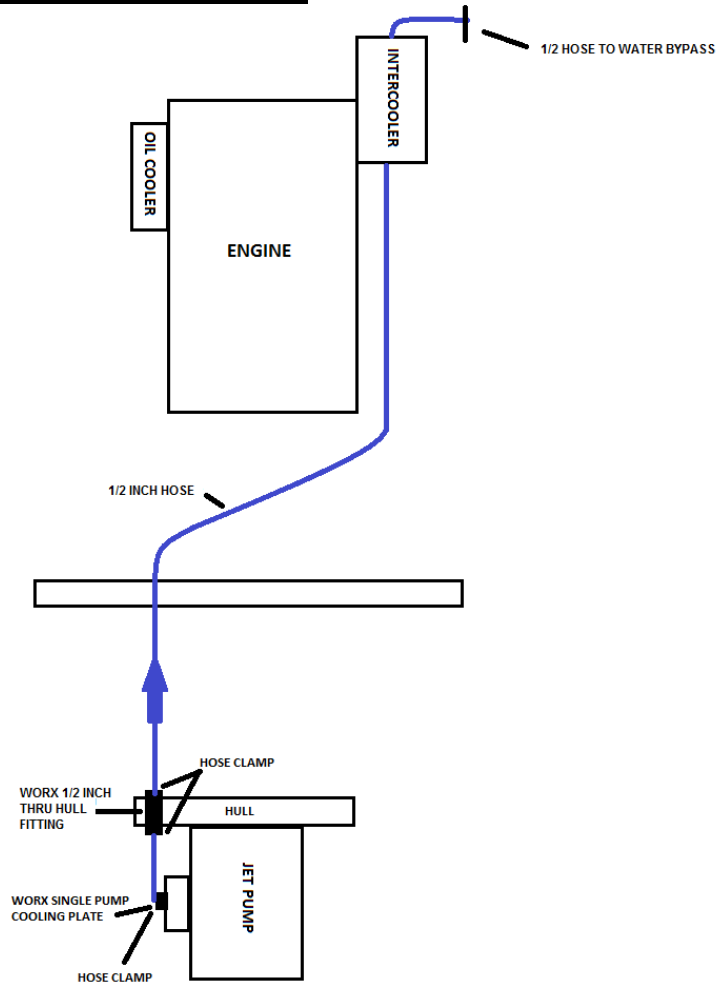
16- Run map line from top of BOV to map sensor. Use 'T' piece and T into small hose to map sensor. Secure line to fuel rail with zip ties.



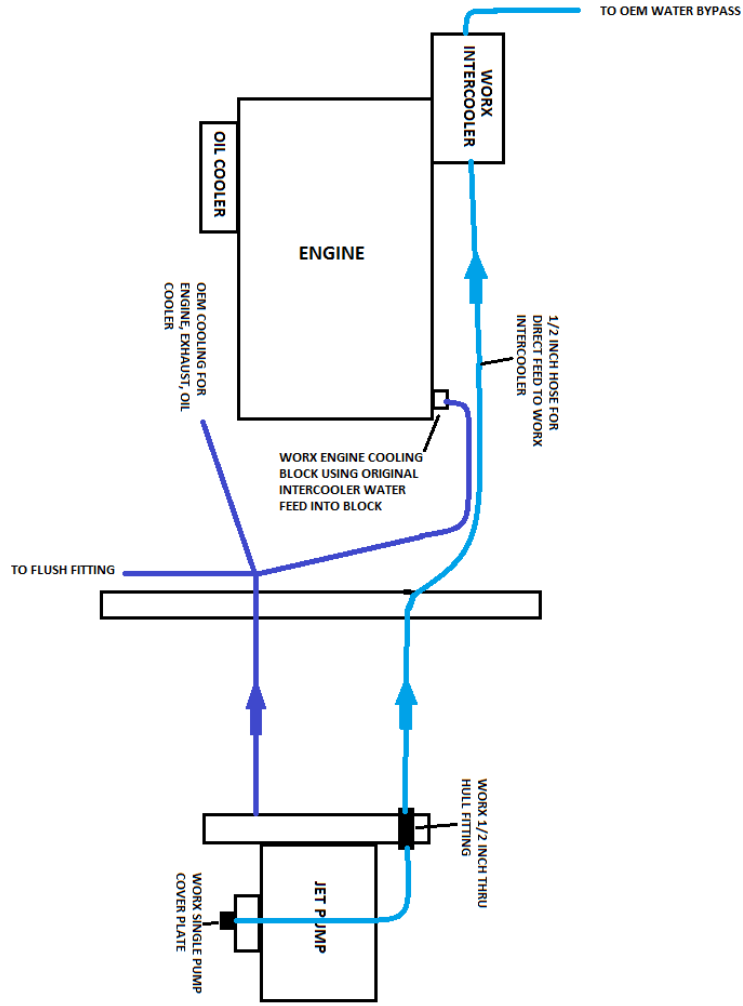
17- Fit top intercooler hose from supercharger to intercooler and secure with clamps.

18- Check over all clamp and bolts. Test on trailer with seats off to ensure not water leaks or boost leaks. Check for constant water pressure out of water bypass on right side of ski.

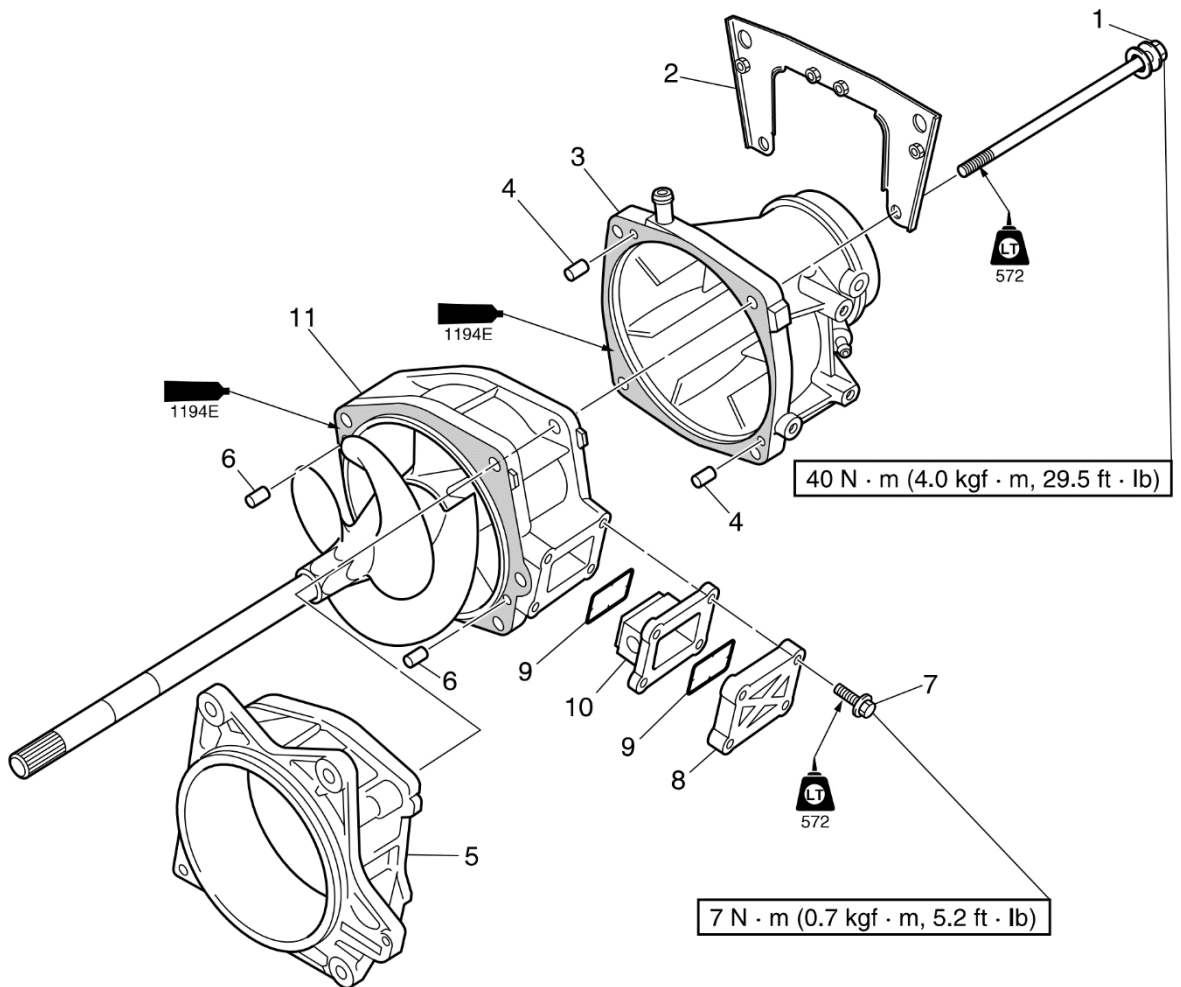
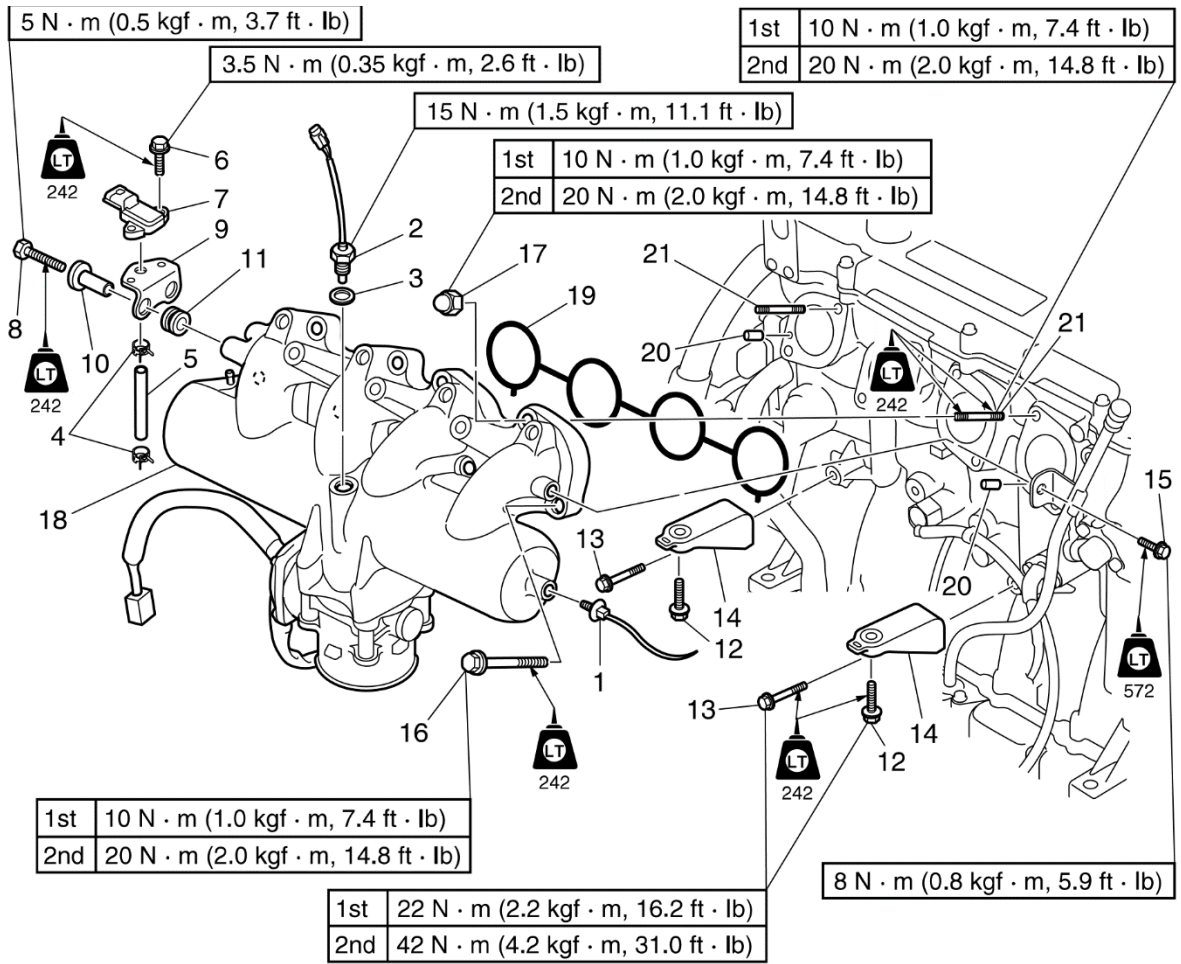
**Cooling diagram for stock system.**



# Cooling system for ski with upgraded cooling







Thank you for purchasing **Worx Racing components** products. We firmly believe that **Worx Racing Components** products are among the finest watercraft parts available. A great deal of time and effort has gone into the design and development of this product to ensure that it will perform to the highest standard and that installation is a relatively straight forward and simple procedure. If you have any questions or comments on the performance and/or installation of our products please contact us at the numbers listed on page one or through your local **Worx** dealer.

8B 354 Brisbane Rd Arundel QLD 4214 Phone: +61 7 5563 1031

[www.worx.com.au](http://www.worx.com.au) / [info@worx.com.au](mailto:info@worx.com.au)

---