

**SEADOO SPARK
RIDE PLATE**

Part No. WR244

Suits Models:
• 2014+ Seadoo Sparks Without IBR**Parts Supplied:**

- WR244 Intake Grate
- 2 x M6 x 12mm Bolts

Tools Required:

- T27 Torx Bit
- Flat Blade Screwdriver
- 13mm Spanner/Socket
- Marine Sealant
- 10mm Spanner/Socket

IMPORTANT: READ ALL INSTRUCTIONS BEFORE PROCEEDING WITH INSTALLATION**INSTALLATION INSTRUCTIONS:**

1. Make sure ski is secure and on a flat surface. Remove lanyard and disconnect battery.
2. Remove the seat.



3. Undo the 3 x Torx bolts near the tank.



4. Remove the torx bolt located under the panel at the front of the steering and remove the panel.



5. Undo the steering clamp by removing the 2 x 10mm bolts.



6. Undo the 10mm nyloc nut and bolt, connecting the steering arm to the clamp.



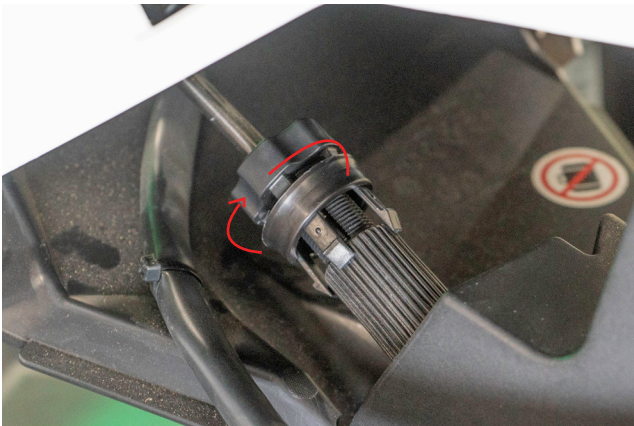
7. Unclip the side panels on each side shown below.



- 8.** Undo the steering adjustment retainer lock by moving the ring up.



- 9.** Undo the connection by spinning clockwise until it's removed.



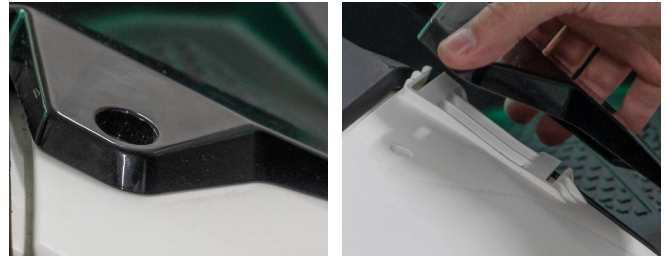
- 10.** Undo the left side panel pictured below.



- 11.** Undo the main topdeck connector wiring by pulling the red level down on the connection, then push the black middle section in and pull the connection away to disconnect.



- 12.** Undo & remove the back black panels by undoing the 2 x torx bolts.



- 13.** Undo the torx bolts securing the topdeck in the black plastic portion around the ski.



- 14.** Remove the hull lifting up and toward the front of the ski so that the steering arm slides through the grommet.



- 15.** Remove the back corner panels pictured below.



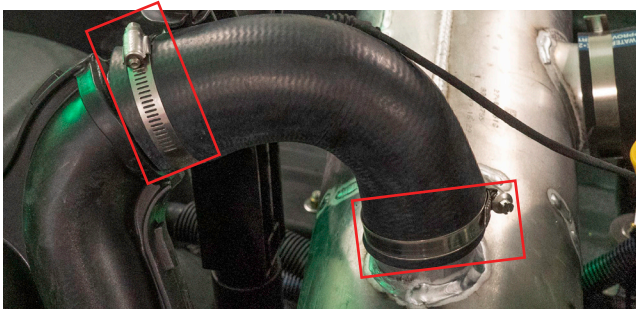
- 16.** Undo the 16 torx bolts on the white plastic around the rear of the ski.



- 17.** Remove the panels and remove the foam rear seat support.



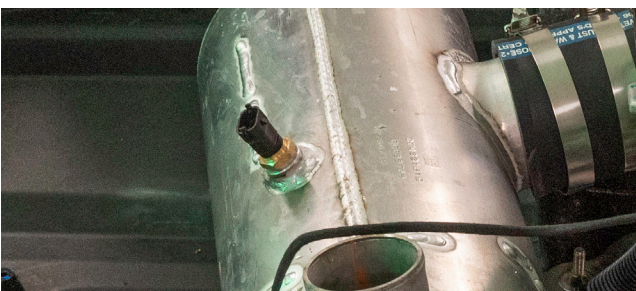
- 18.** Undo and retain the OEM hose clamps on the OEM exhaust hose.



- 19.** Unclip the exhaust temp sensor and cut the zip ties.

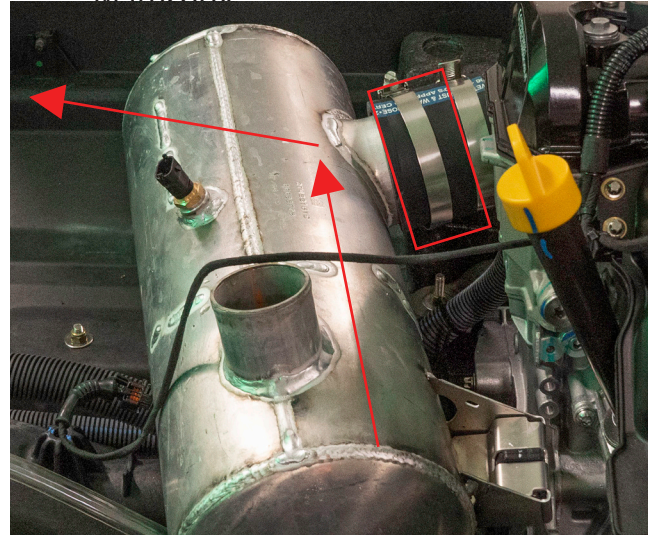


- 20.** Remove the sensor from the waterbox using a 19mm spanner.



- 21.** Undo the first hose clamp on the exhaust manifold hose before removing the waterbox.

TIP: Rotate the right side up and away from the bottom of the ski and wiggle out. Then pull towards the back of the ski to remove the waterbox.



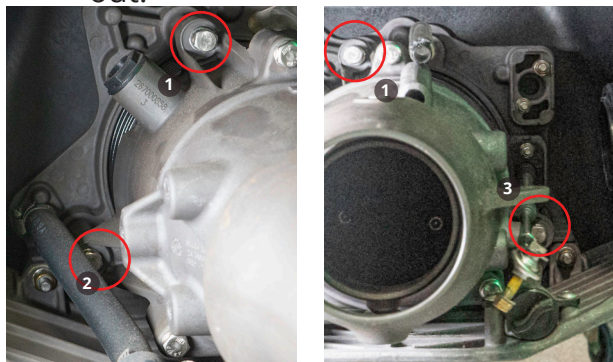
- 22.** In the pump tunnel, remove the steering connection, using a 10mm spanner & socket.



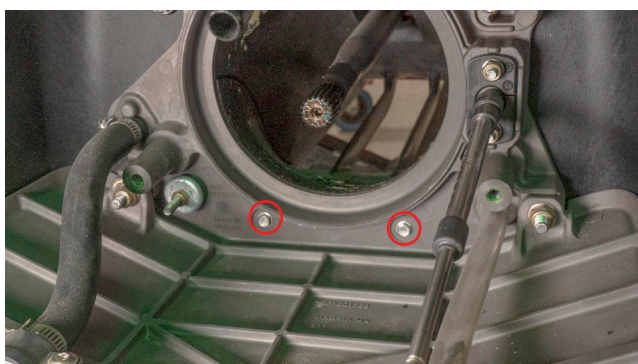
- 23.** Disconnect the hose clamp and disconnect the bilge pump hose.



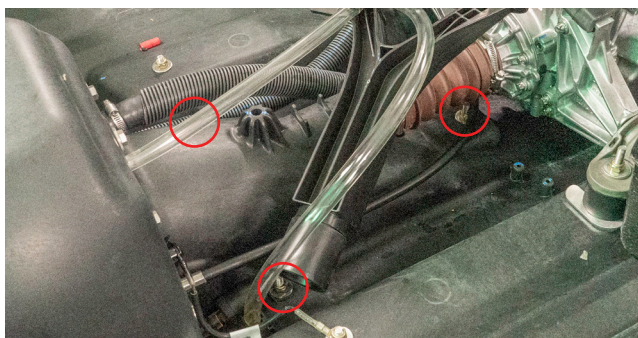
- 24.** Remove the three bolts pictured below before pulling the pump unit out.



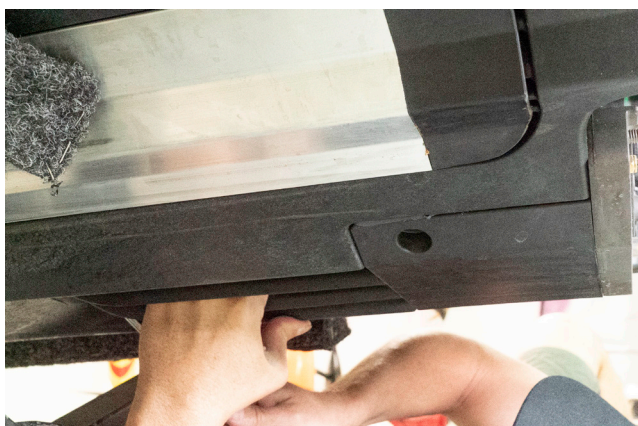
- 25.** Undo the 2 x Bolts pictured below.



- 26.** Remove the 3 x bolts pictured below. Retain the red cap on the left bolt.



- 27.** Using a flat blade screwdriver, pry the OEM intake grate from the hull.



- 28.** We recommend using a pump seal kit to reduce cavitation. If doing so, use this time to firmly insert the seal kit into the exposed cavities. Use of some force may be required as this is meant to be a tight fit.



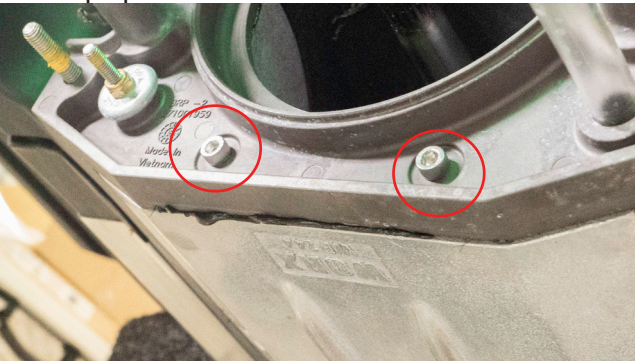
- 29.** Apply marine sealant as pictured below. It is better to apply an excess in order to reduce air pockets and



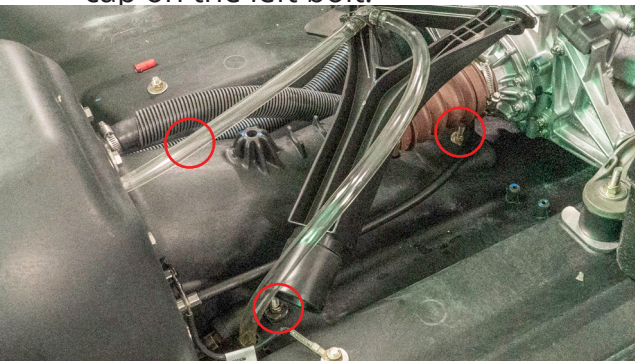
- 30.** Place the intake grate in the cavity and lightly start all bolts for



- 31.** Use the provided bolts to secure the back of the intake grate, as pictured



- 32.** Firmly tighten the other three bolts pictured below and replace the red cap on the left bolt.



- 33.** Clean any sikaflex that has seaped out. Work in reverse from step 24 to reinstall all connections and top deck. Ensure all connections are tight and secure before reconnecting battery and testing part.