

## 2020+ SEADOO GTR 230 & RXTX 300 STEERING KITS

Part No. WR06040

Suits Models:

- 2020+ SeaDoo GTR 230/RXTX 300

### Parts Supplied:

- Steering Stem
- ODI Grips
- ODI Handlebars
- Left Switch Housing
- Right Switch Housing
- Electronic Throttle Lever
- Reverse Lever
- Spiral Wrap
- 6 x Zip Ties

### Tools Required:

- Flat Blade Screwdriver
- 8mm Socket
- 2.5, 3, 4 & 6mm Hex Keys
- 5.5, 8 & 10mm Sockets
- T27 Torx Bit
- Side Cutters
- Grease

**IMPORTANT:** READ ALL INSTRUCTIONS BEFORE PROCEEDING WITH INSTALLATION

### INSTALLATION INSTRUCTIONS:

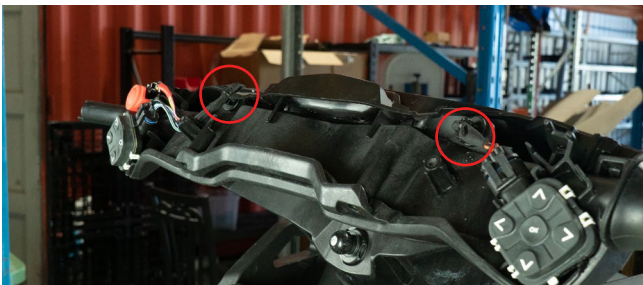
1. Remove handle bar pad by lifting the pad from the bottom, and pulling up and away from the bars.



2. Using an 8mm Socket, remove the two bolts picture and removed the plates covering the switches.



3. Remove the zip ties holding the cable harnesses in place.



4. Remove the back handlebar cover plate by using a flat bladed screwdriver to gently pry the cover plate away from the lower assembly. Clip locations can be viewed below.



5. Disconnect throttle, reverse, start and stop switch, mode switch and VTS switch cables.



6. Undo the plastic lock nut securing the DESS post in place and unclip the DESS post cable. Retain the lock nut and pull the cable through the back of the steering column.



Australia:

10B 354 Brisbane Rd Arundel QLD 4214

Phone: +61 7 5563 1031

info@worx.com.au | worx.com.au

United States:

9251 Orco Parkway Unit G, Riverside CA 92509

Phone: (951) 684-9679

info@worxracingusa.com | worxracingusa.com

- 7.** Open the front storage compartment and unscrew the two torx bolts, pictured below, using a T27 Torx Bit. Remove the dash cover plate by pulling up and away from the ski.



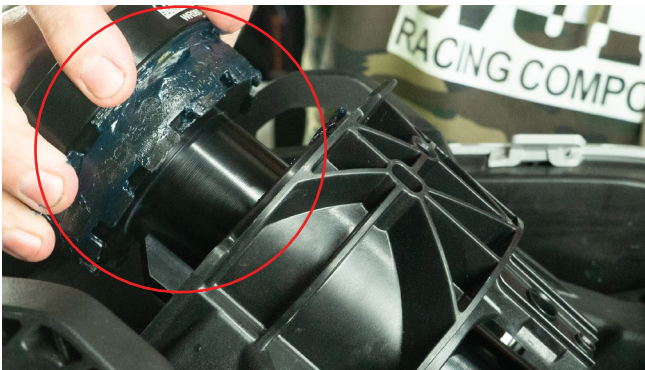
- 8.** Undo the two bolts securing the steering clamp retainer piece using a 10mm socket.



- 9.** Pull the steering column up and away from the ski, whilst feeding the cables back through the column as you pull it away.



- 10.** Remove the top bush from the steering column and fit to the supplied Worx steering column as pictured.



- 11.** Slide the steering column back down through the ski, feeding the cables up and through the column, ensuring the worx logo is facing up (as pictured above), with the top steering stoppers facing downwards, and ensure everything fits well.

- 12.** Replace the steering retainer clamp and re-secure using the OEM bolts. NOTE: We recommend applying grease to these bolts and any other bolts throughout the process, to ensure they can easily be removed in future.



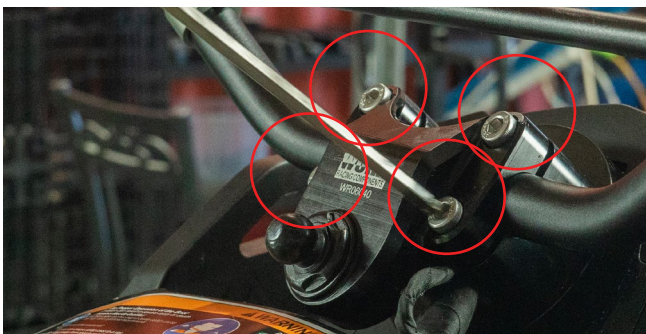
- 13.** Re-clip in the dash plate cover and secure using the OEM torx bolts.



- 14.** Secure the DESS post to the top clamp using the OEM plastic lock nut and re-clip the cable to the DESS post.



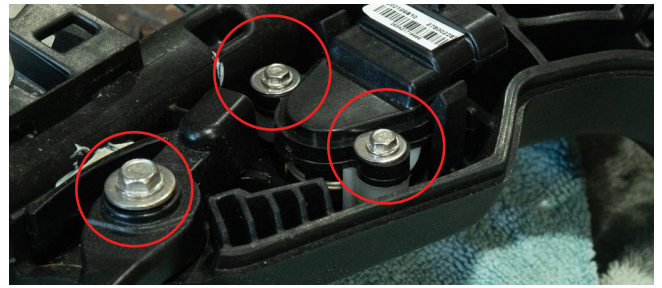
- 15. Lightly place the handle bars on the steering column, and measure to ensure they are centered to the column.
- 16. Place the top clamp over the bars and secure each bolt lightly with your fingers first to ensure the handlebars don't fall out.
- 17. Measure the distance again to ensure the bars are centered, and the angle of the bars is as desired before tightening the bolts a little at a time, using a 6mm hex key & switching between the bolts.



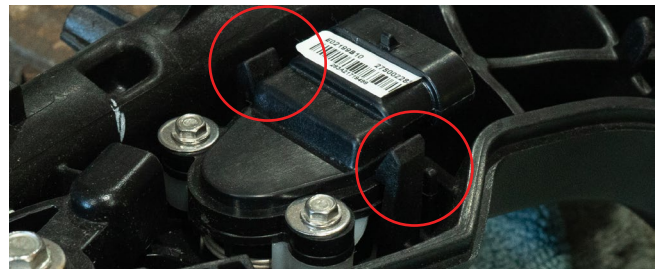
- 18. Measure the gap between the top and bottom clamp ensuring it is even the whole way around. If not, go back and re-tighten the bolts so the bar is secured evenly.
- 19. Install the grips on the handlebars, tightening each locknut with a 2.5mm hex key.



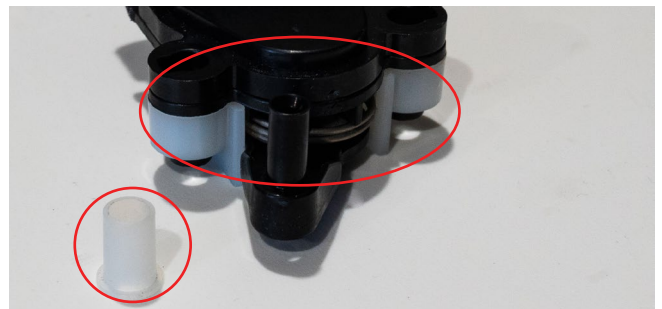
- 20. Undo the bolts securing the Electronic Throttle and IBR actuator units in place and both levers using a 5.5mm or 7/32" socket & 8mm socket.



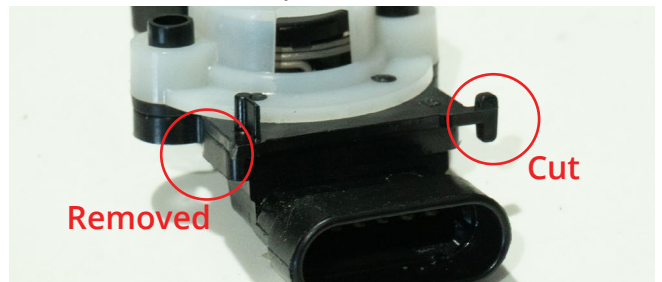
- 21. Unclip the two retaining clips holding the actuators in place and remove from the OEM handlebar assembly.



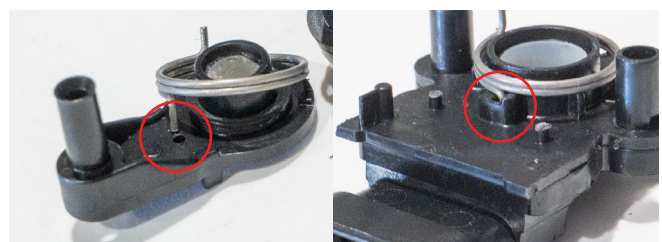
- 22. To assemble the throttle and IBR assemblies, remove the white spacers from the units.



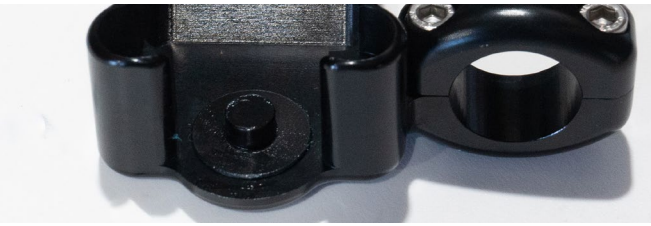
- 23. Cut the tabs on the outside of the actuators as pictured below.



- 24. If the spring falls away from the unit, replace the locating tabs in the positions show in the images below.



- 25.** Place the washer on the small protrusion from the top side of the lever housing.



- 26.** Place the trigger on the actuator as pictured below.



- 27.** Place the actuator and trigger into the lever housing as pictured below and secure using housing top clamp and bolts provided, using a 3mm hex key.



- 28.** Clamp the lever housing to the handlebar using a 4mm hex key.



- 29.** Repeat steps 22-28 for opposite side lever housing.

- 30.** Place switches in the left & right switch housings and reinstall cables.



- 31.** Secure the back plate of the switch housing using a 3mm and 4mm hex key and the bolts provided.

- 32.** Clamp the switch housing the bars on the inside of the lever controls and secure using a 4mm hex key and the bolts provided.



- 33.** Ensure the levers and switches are placed evenly on both sides and ensure the angle of levers, switches and bars are as desired.

- 34.** Re-clip in any remaining cables and ensure a tight fit.

- 35.** Use spiral wrap to cover any remaining loose wires.

- 36.** Use zip ties to secure cables to the bar, to achieve a clean and finished look as desired.

- 37.** Before skiing, we recommend re-checking all connections and any bolts to ensure everything is properly secured and checking smooth operations of any levers or switches.