

## SEADOO SPARK AIR FILTER KIT

Part No. WR04026

Suits Models:  
• 2014+ Seadoo Spark

### Parts Supplied:

- WR04026 Aluminium Pipe
- 5 x Zip Ties
- Silicon Reducer Hose
- 600mm x 1/2" Fuel Hose
- WR04026 Air Filter
- 2 x 1/2" Hose Adaptors
- 3 x 2 1/2" - 3" Hose Clamp

### Tools Required:

- T27 Torx Bit
- Flat Blade Screwdriver
- Needle Nose Pliers
- 10mm Spanner/Socket
- Electric Drill
- 2 5/8" Hole Saw Bit
- Dremel/Die Grinder Optional

### **IMPORTANT:** READ ALL INSTRUCTIONS BEFORE PROCEEDING WITH INSTALLATION

Note: While it is not necessary to remove the hull for ECU removal, some people may find it easier to remove the hull for better access and reduce the risk of dropped parts.

### INSTALLATION INSTRUCTIONS:

1. Make sure ski is secure and on a flat surface. Remove lanyard and disconnect battery.

2. Remove the seat.



3. Undo the 3 x Torx bolts near the tank.



4. Remove the torx bolt located under the panel at the front of the steering and remove the panel.



5. Undo the steering clamp by removing the 2 x 10mm bolts.



6. Undo the 10mm nyloc nut and bolt, connecting the steering arm to the clamp.



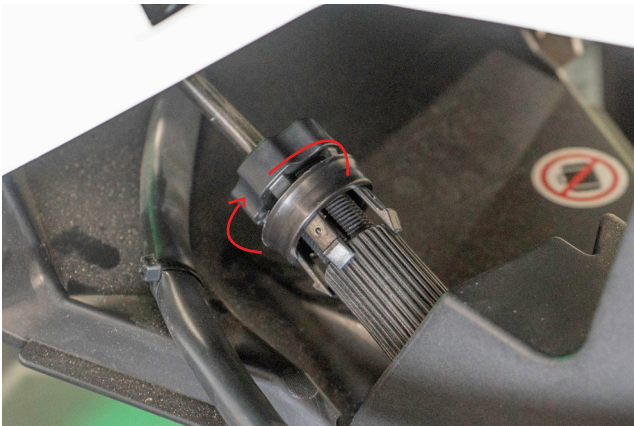
7. Unclip the side panels on each side shown below.



- 8.** Undo the steering adjustment retainer lock by moving the ring up.



- 9.** Undo the connection by spinning clockwise until it's removed.



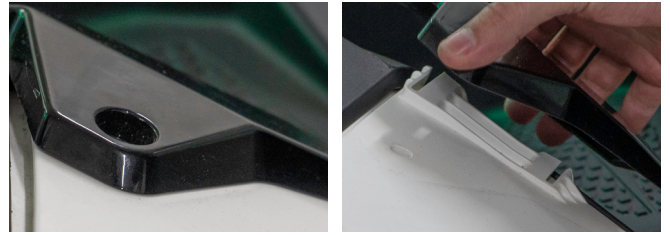
- 10.** Undo the left side panel pictured below.



- 11.** Undo the main topdeck connector wiring by pulling the red level down on the connection, then push the black middle section in and pull the connection away to disconnect.



- 12.** Undo & remove the back black panels by undoing the 2 x torx bolts.



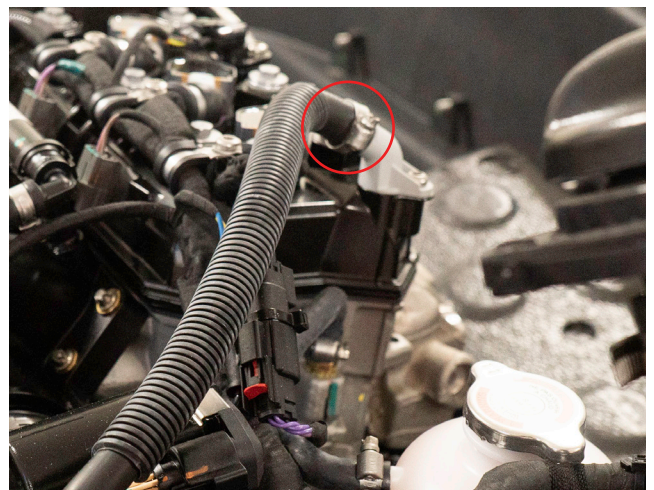
- 13.** Undo the torx bolts securing the topdeck in the black plastic portion around the ski.



- 14.** Remove the hull lifting up and toward the front of the ski so that the steering arm slides through the grommet.



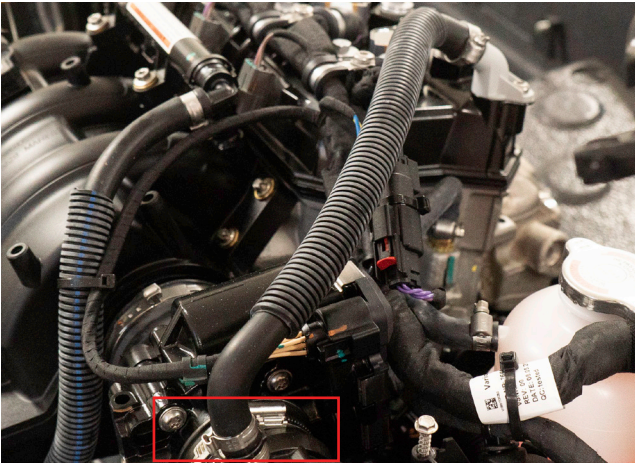
- 15.** Undo breather hose clamp.



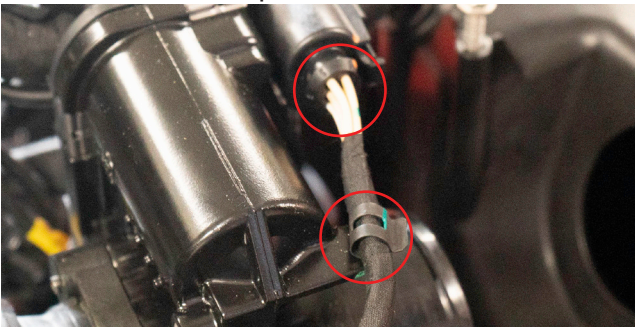
Australia:  
10B 354 Brisbane Rd Arundel QLD 4214  
Phone: +61 7 5563 1031  
info@worx.com.au | worx.com.au

United States:  
9251 Orco Parkway Unit G, Riverside CA 92509  
Phone: (951) 684-9679  
info@worxracingusa.com | worxracingusa.com

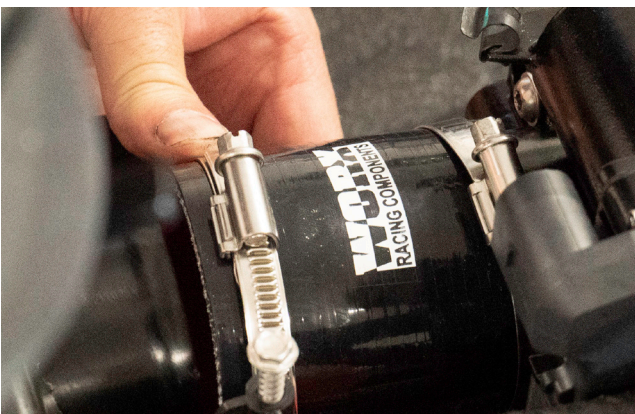
- 16.** Remove the OEM air hose hose clamp and remove air and breather hose.



- 17.** Undo clip and throttle body wiring connection pictured below.



- 18.** Secure the reducer hose to the throttle body connector using supplied hose clamps.



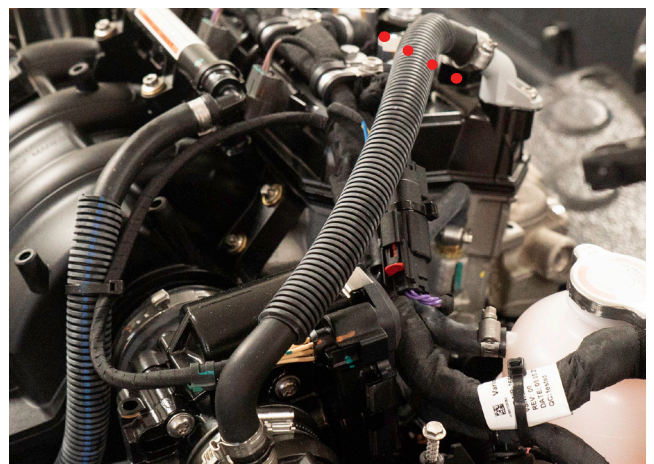
- 19.** Using the supplied template on page 5. and a 2 5/8" hole saw, cut a hole through your airbox. If necessary, this can be made larger to accommodate your aluminium pipe. The hole size will not affect performance.
- 20.** Feed your aluminium pipe through and connect the straight end to the reducer hose using a supplied hose clamp.



- 21.** Fit the pod filter to the other end and secure with supplied hose clamp.



- 22.** Cut a section 50mm long from the OEM breather hose.



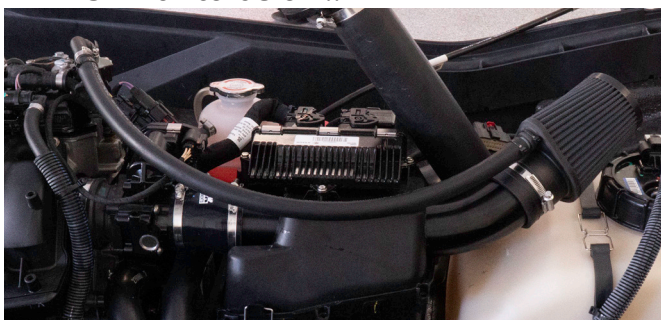
- 23.** Insert one breather adaptor to the pod filter and secure one end of the fuel hose to it, using zip ties to secure the connections made.



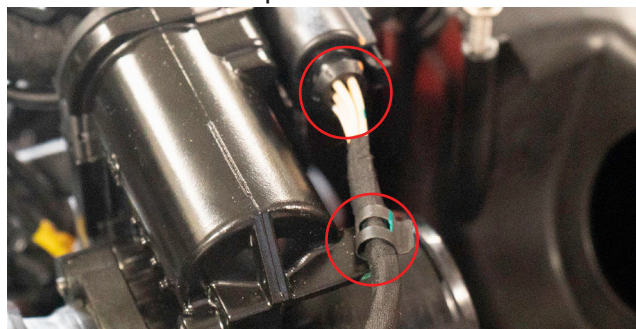
- 24.** Secure the cut piece of breather hose, to the OEM location and secure the remaining adaptor to the open end.
- 25.** Connect the other end of the supplied fuel hose and use zip ties and hose clamp to secure the connections as below.



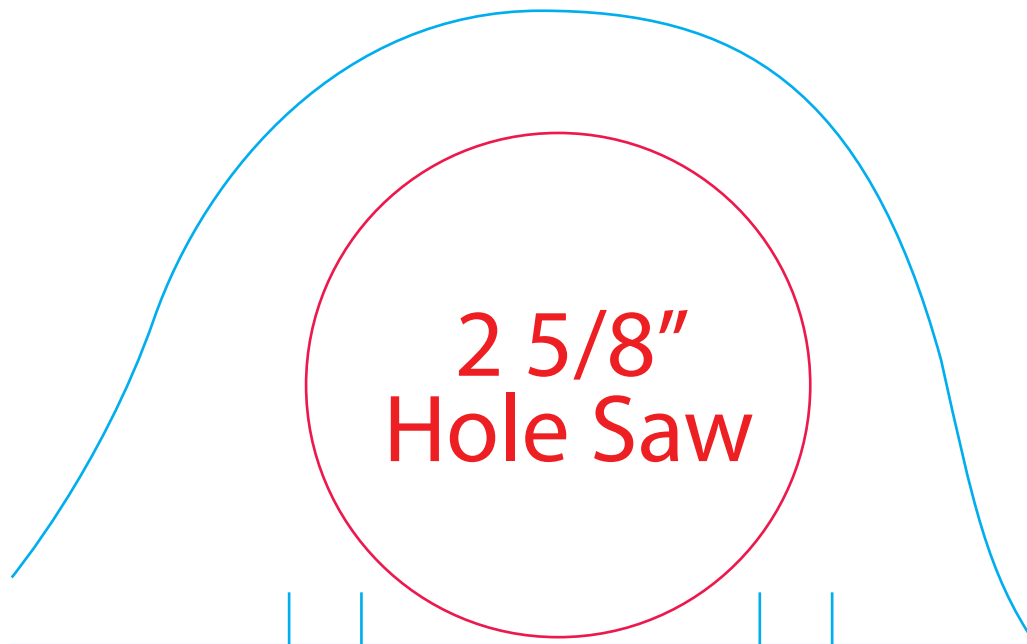
- 26.** The finished product should look similar to below..



- 27.** Reinstall clip and throttle body wiring connection pictured below.



- 28.** Work backwards from step 14. to reinstall all parts and connections.
- 29.** Ensure all connections are tight and secure before reconnecting battery and top deck. Test parts before riding for an extended period.



SET PRINT SCALING To 100% OR NONE

---

**Australia:**  
10B 354 Brisbane Rd Arundel QLD 4214  
Phone: +61 7 5563 1031  
info@worx.com.au | worx.com.au

**United States:**  
9251 Orco Parkway Unit G, Riverside CA 92509  
Phone: (951) 684-9679  
info@worxracingusa.com | worxracingusa.com