

# SEADOO SPARK RIBBON REMOVER

Part No. WR04023

Suits Models:  
• 2014+ Seadoo Spark

**Parts Supplied:**

- WR04023 Ribbon Remover
- Hose Clamp

**Tools Required:**

- T27 Torx Bit
- Flat Blade Screwdriver
- Needle Nose Pliers
- 10mm Spanner/Socket

***IMPORTANT: READ ALL INSTRUCTIONS BEFORE PROCEEDING WITH INSTALLATION***

Note: While it is not necessary to remove the hull for ECU removal, some people may find it easier to remove the hull for better access and reduce the risk of dropped parts.

**INSTALLATION INSTRUCTIONS:**

1. Make sure ski is secure and on a flat surface. Remove lanyard and disconnect battery.

2. Remove the seat.



3. Undo the 3 x Torx bolts near the tank.



4. Remove the torx bolt located under the panel at the front of the steering and remove the panel.



5. Undo the steering clamp by removing the 2 x 10mm bolts.



6. Undo the 10mm nyloc nut and bolt, connecting the steering arm to the clamp.



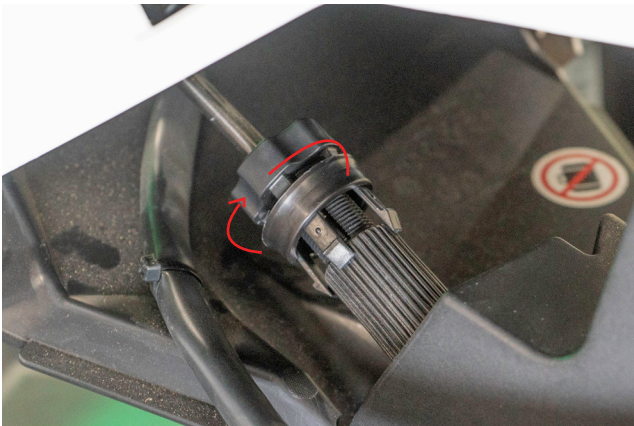
7. Unclip the side panels on each side shown below.



- 8.** Undo the steering adjustment retainer lock by moving the ring up.



- 9.** Undo the connection by spinning clockwise until it's removed.



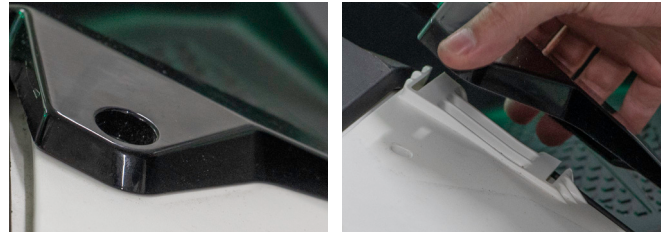
- 10.** Undo the left side panel pictured below.



- 11.** Undo the main topdeck connector wiring by pulling the red level down on the connection, then push the black middle section in and pull the connection away to disconnect.



- 12.** Undo & remove the back black panels by undoing the 2 x torx bolts.



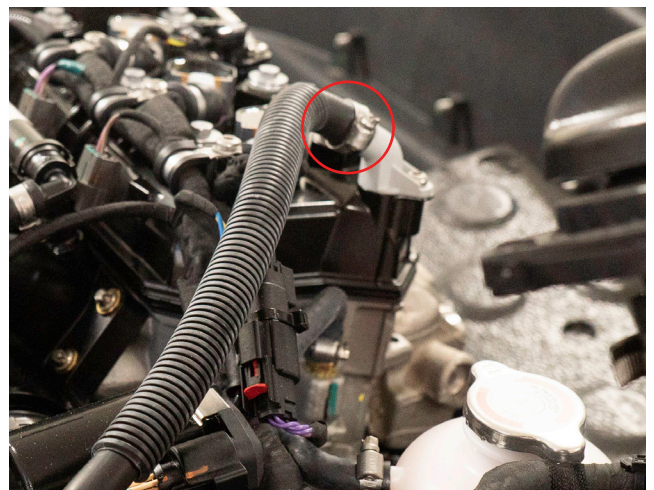
- 13.** Undo the torx bolts securing the topdeck in the black plastic portion around the ski.



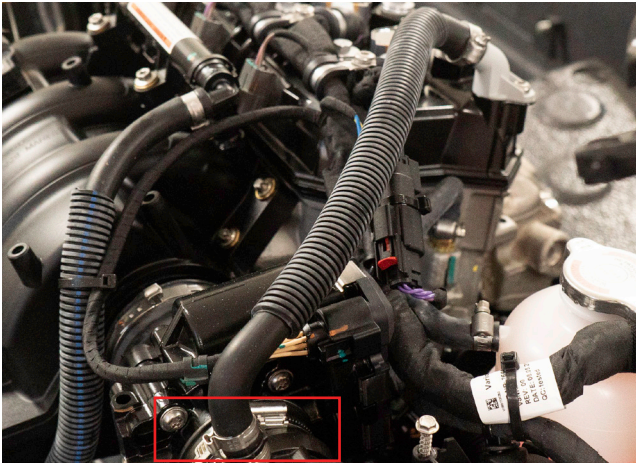
- 14.** Remove the hull lifting up and toward the front of the ski so that the steering arm slides through the grommet.



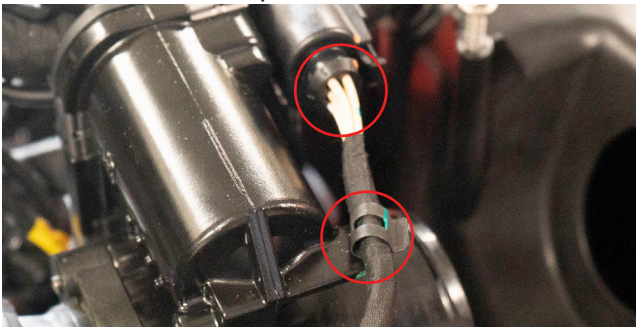
- 15.** Undo breather hose clamp.



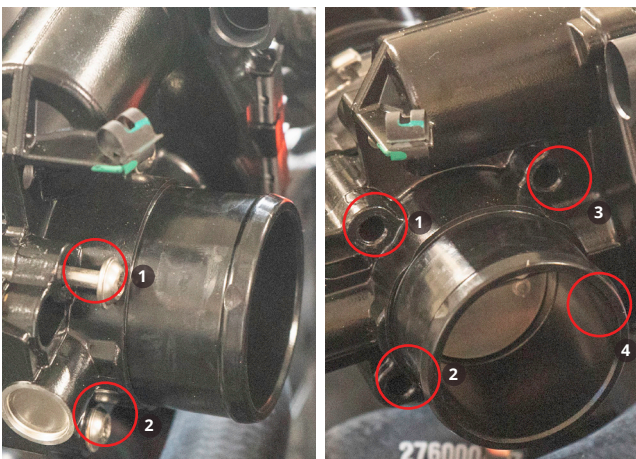
- 16.** Remove the OEM air hose hose clamp and remove air and breather hose.



- 17.** Undo clip and throttle body wiring connection pictured below.



- 18.** Undo the four T27 throttle body torx bolts.



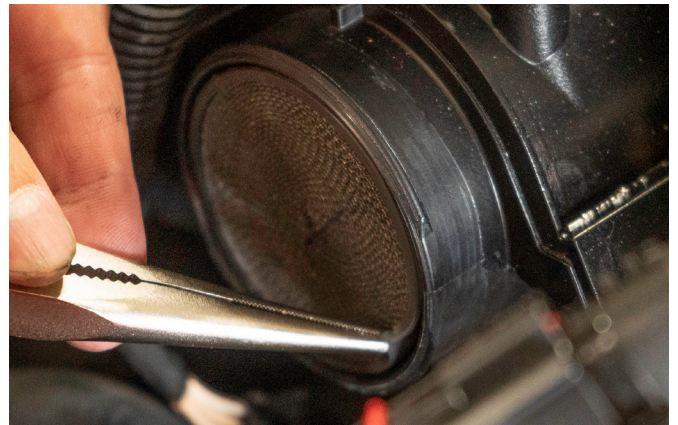
- 19.** Pull the throttle body away from the ski.



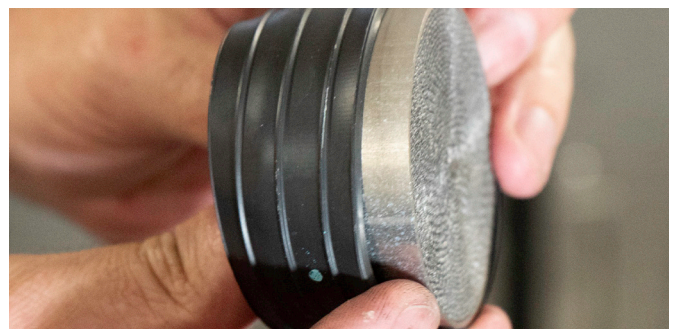
- 20.** Undo hose clamp and remove throttle body connector..



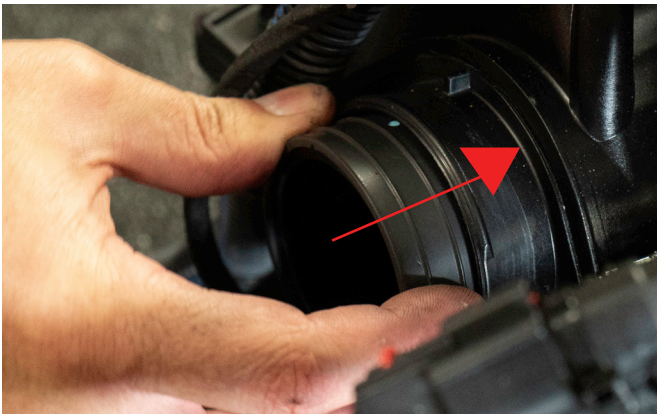
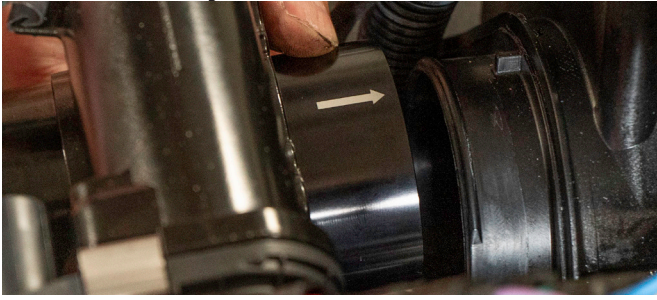
- 21.** Using needle nose pliers or a flat blade screw driver, gently pry the rubber ring and ribbon from the inlet manifold, being careful not to damage it as you will need to reuse the OEM rubber.



- 22.** Remove the rubber from the OEM ribbon.



- 23.** Remembering the direction of the arrow, place the rubber around the Worx Ribbon remover piece. Place into the OEM location, with the arrow point towards the airbox assembly.



- 24.** Reinstall throttle body connector and use supplied hose clamp to resecure.



- 25.** Work backwards from step 19. to reinstall all parts and connections.
- 26.** Ensure all connections are tight and secure before reconnecting battery and top deck. Test parts before riding for an extended period.