

SEADOO SPARK WEAR RING/WEAR RING SEAL

Part No. SK-HS-140 / WR06038

Suits Models:

- 2014+ Seadoo Sparks Without IBR

Parts Supplied:

- SK-HS-140 / WR06038

Tools Required:

- 10mm Socket
- Phillips Head Screwdriver

IMPORTANT: READ ALL INSTRUCTIONS BEFORE PROCEEDING WITH INSTALLATION

INSTALLATION INSTRUCTIONS:

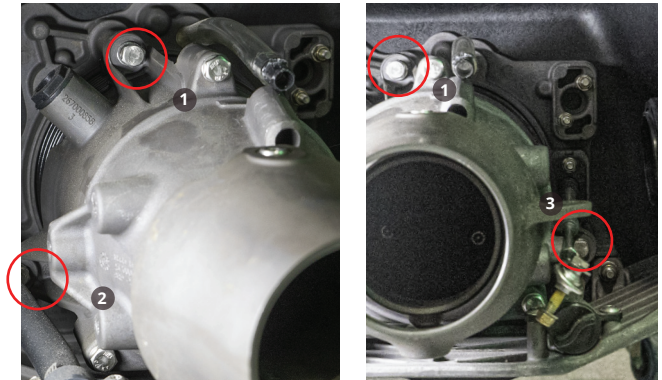
1. Make sure ski is secure and on a flat surface. Remove lanyard and disconnect battery.
2. In the pump tunnel, remove the steering connection, using a 10mm spanner & socket.



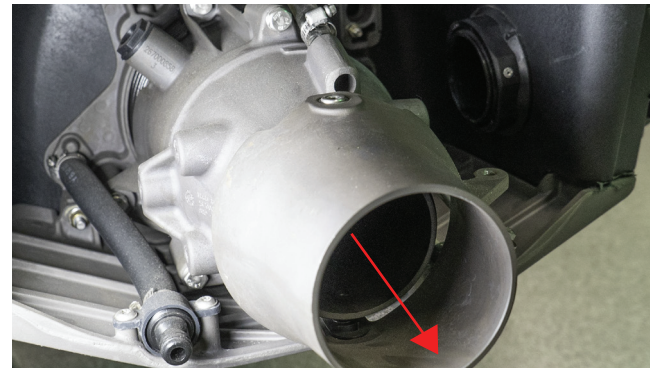
3. Disconnect the hose clamp and disconnect the bilge pump hose.



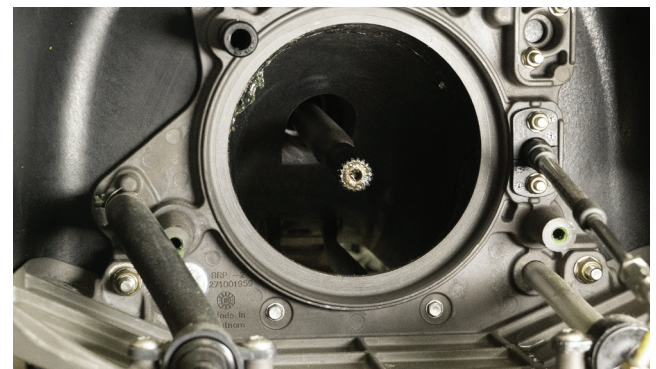
4. Remove the three bolts pictured below before pulling the pump unit out.



5. Pull the pump out through the tunnel.



6. Remove the wear ring from the tunnel.



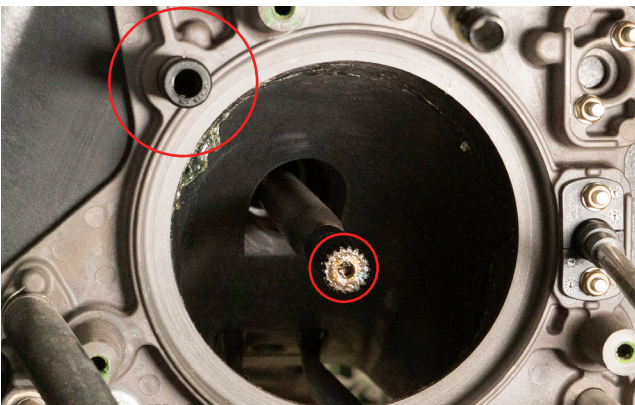
- 7.** Remove the rubber seal.



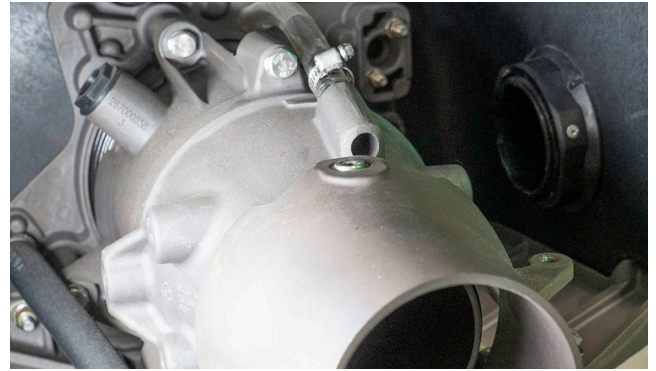
- 8.** Using either your OEM seal, or a new seal. Place the rubber seal around the Wear Ring you plan on using.



- 9.** Grease the opposite side of the wearing around the edge. This will prevent corrosion that can sometimes be caused by dissimilar metals.
- 10.** Place the wear ring and pump assembly back into the pump tunnel. The tabs on the side of the wearing should line up with the extrusion pictured below. Ensure the prop also aligns with the spline.



- 11.** Reconnect the water line and reinstall the three bolts from step 4.



- 12.** Ensure all bolts and connections are tight before reinstalling battery and testing all parts.