

SEADOO SPARK IMPELLER

Part No. SK-CD-12/14 / SK-CD-12/14

Suits Models:
• 2014+ Seadoo Sparks Without IBR

Parts Supplied:

- SK-CD-12/14
- SK-CD-12/17

Tools Required:

- 13mm Socket
- Adjustable Spanner/23mm Socket
- Vice
- Hex Keys
- Seadoo Spark Impeller Tool

IMPORTANT: READ ALL INSTRUCTIONS BEFORE PROCEEDING WITH INSTALLATION

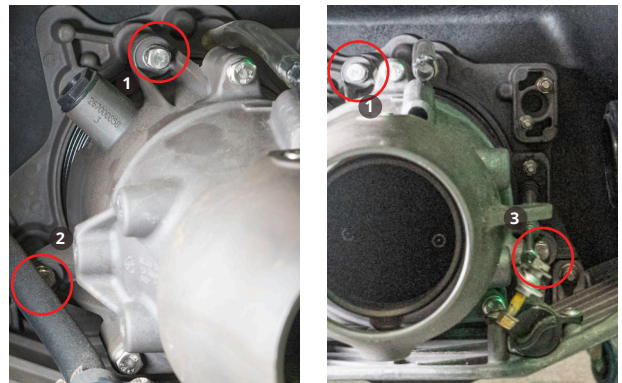
INSTALLATION INSTRUCTIONS:

1. Make sure ski is secure and on a flat surface. Remove lanyard and disconnect battery.
4. Remove the three bolts pictured below before pulling the pump unit out.

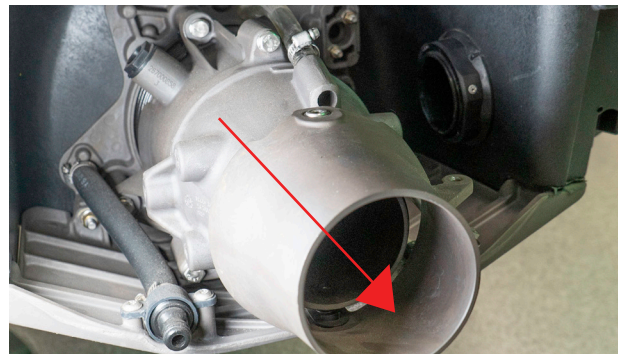
2. In the pump tunnel, remove the steering connection, using a 10mm spanner & socket.



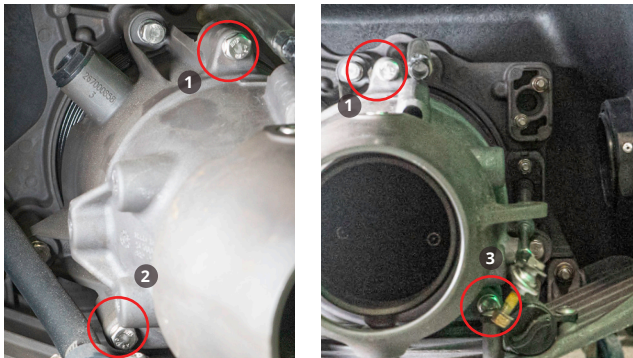
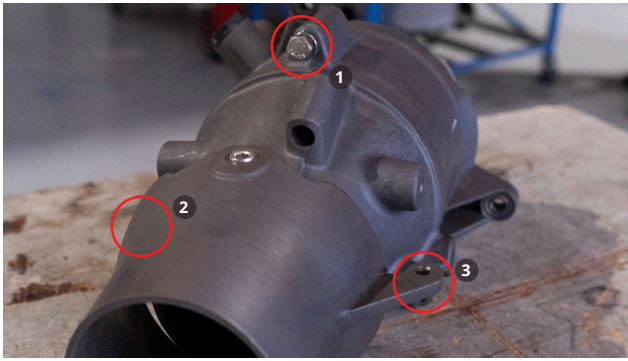
3. Disconnect the hose clamp and disconnect the bilge pump hose.



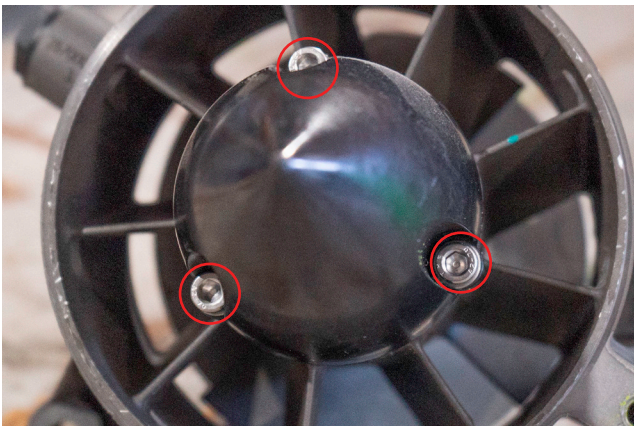
5. Pull the pump out through the tunnel.



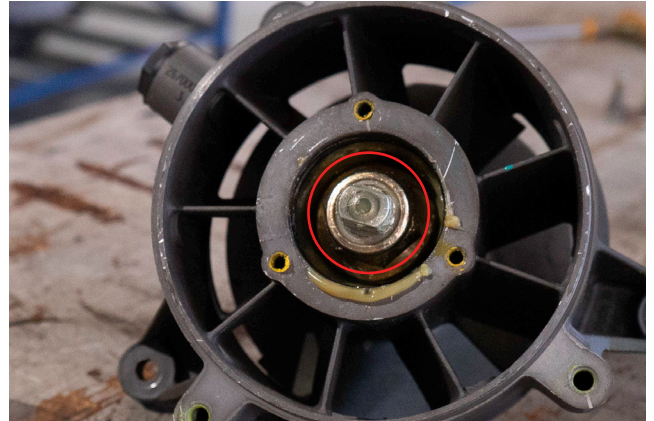
6. Separate the nozzle from the pump by undoing the 3 three 13mm bolts pictured below.



7. Undo the three hex bolts using an allen key or hex head and remove the pump cone.



8. Securely place the extrusion pictured below within your vice and carefully tighten.



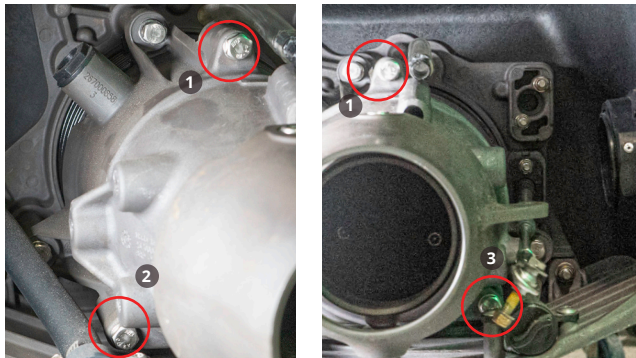
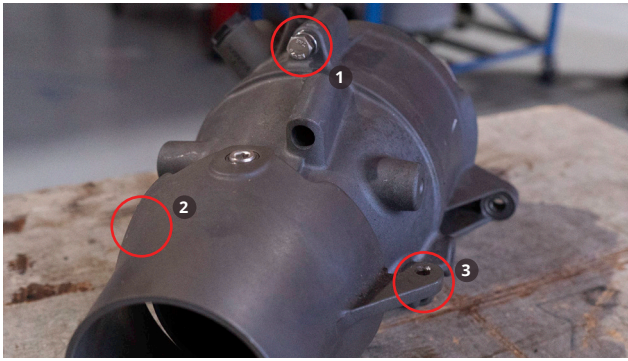
9. Remove the rubber cone at the top of the impeller.



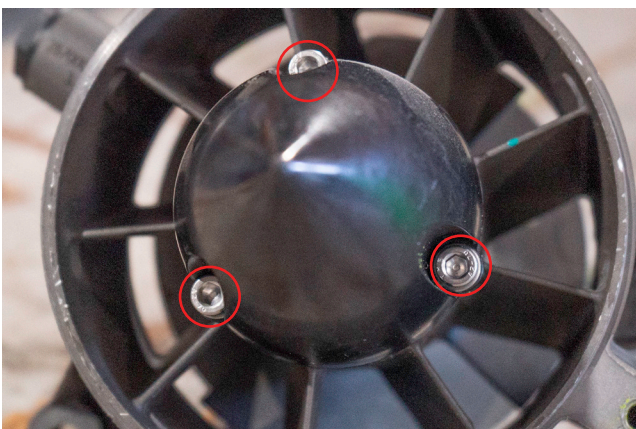
10. Place your impeller tool inside the top, spline down and using a 23mm socket and pry bar, undo the impeller.



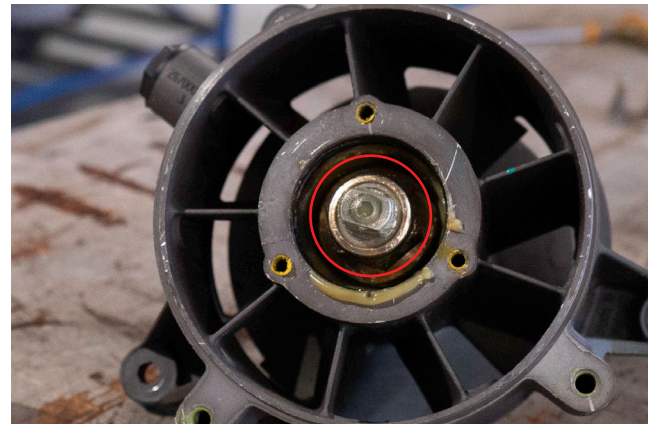
- 11.** Separate the nozzle from the pump by undoing the 3 three 13mm bolts pictured below.



- 12.** Undo the three hex bolts using an allen key or hex head and remove the pump cone.



- 13.** Securely place the extrusion pictured below within your vice and carefully tighten.



- 14.** Remove the rubber cone at the top of the impeller.



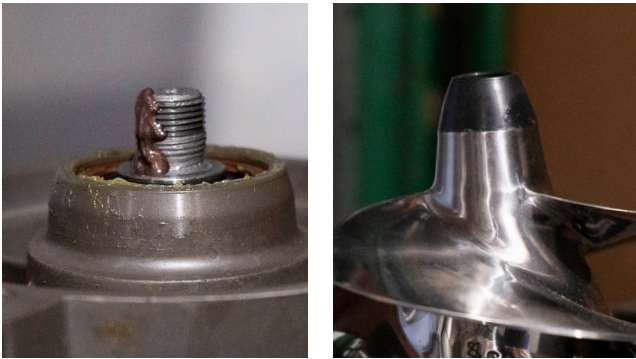
- 15.** Place your impeller tool inside the top, spline down and using a 23mm socket and pry bar, undo the impeller.



- 16.** Pull the OEM impeller from the pump unit.



- 17.** Undo the three hex bolts using an allen key or hex head and remove the pump cone.



- 18.** Work backwards from step 12. to reinstall pump, impeller and fittings.

Ensure all bolts and connections are tight before reinstalling battery and testing all parts.