

ANTIGUA GOLF SPRING 2024



ANTIGUA

APPAREL

Arrive Comfortably

WELCOME TO THE SPRING 2024 GOLF COLLECTION CATALOGUE

*At Antigua, we believe that life is
a journey, made up of moments.*

Moments in your day and in your game.

*You'll experience these moments everywhere.
In what you do.*

In how you feel.

In what you wear.

*You never know when these moments
will arrive but when they do ...*

ARRIVE COMFORTABLY



DRIVEN BY FABRIC & DESIGN

Our 2023 Fall / 2024 Spring Golf Collection features a number of styles that use a variety of new poly fabrications. The poly fabrics provide both functional and styling benefits. Ensuring that our products perform for our customers lifestyle.



BRUSHED

88% POLYESTER /
12% SPANDEX
185gsm

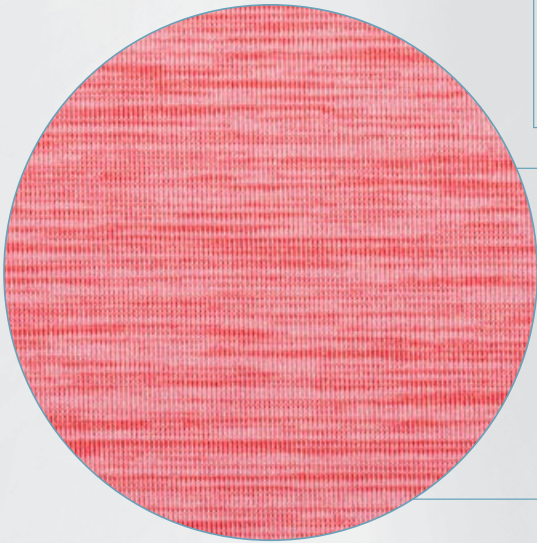
- Extremely soft and comfortable
- Raised surface fibers created through the brushing process



SHEEN

94% POLYESTER /
6% SPANDEX
180gsm

- Smooth, lustrous surface
- Soft, satin feel and appearance



POLY SPAN HEATHERED

SPANDEX 93% POLYESTER 7%
180 gsm

- Matte in appearance
- Slightly drier to the touch
- High Low color texture

TABLE OF CONTENTS

MEN'S FASHION - DELIVERY #1	4
MEN'S FASHION - DELIVERY #2	10
MEN'S ESSENTIALS	25

WOMEN'S FASHION - DELIVERY #1	17
WOMEN'S FASHION - DELIVERY #2	21
WOMEN'S ESSENTIALS	25

MEN'S FASHION - AVAILABE SEPT '23

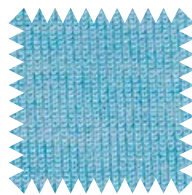




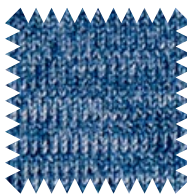
83Y Classic Blue HTR

Par 3 A104829

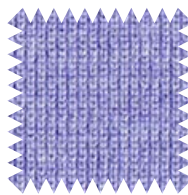
Brushed Poly. 90% polyester/10% spandex brushed heather jersey fabric with self-collared band, hem vents and 3-button placket with matte buttons. Antigua triangle logo at wearer's right sleeve. **S-3XL MSRP \$64.95**



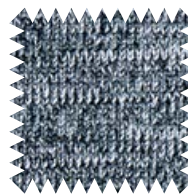
85Y Aqua HTR



74W Nautical Navy HTR



86Y Violet Tulip HTR



094 Black HTR



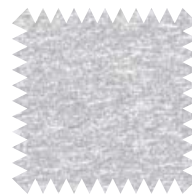
83Y Classic Blue HTR



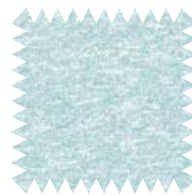
69W Skylight HTR



34X Desert Sun HTR



73W Rock HTR



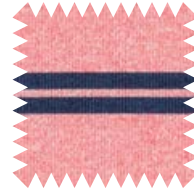
33X Harbor HTR



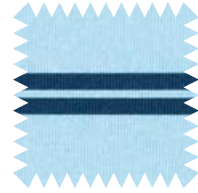
48X Coral Reef
Heather/Nautical Navy

Overclubbing A104843

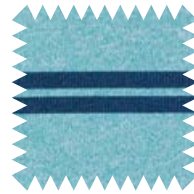
94% polyester/6% spandex matte jersey piece dye fabric stripe short sleeve polo with flat knit collar, hem vents and matte button with Antigua triangle logo at right sleeve. **S-3XL MSRP \$74.95**



48X Coral Reef
Heather/
Nautical Navy



51X Skylight
Heather/
Nautical Navy



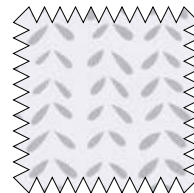
52X Bay Heather/
Nautical Navy



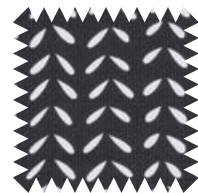
54X Nautical Navy/
Pistachio

Mashie A104903

94% polyester/6% spandex matte jersey dyed fabric with sublimated geo print, short sleeve polo with self-collared, collar band, hem vents and matte button with Antigua triangle logo at right sleeve. **S-3XL MSRP \$74.95**



53X Optic White/
Moon



31X Black/
Optic White



54X Nautical
Navy/
Pistachio



79W River/
Optic White

Motion A104902

94% polyester/6% spandex matte jersey fabric with sublimated floral print, short sleeve polo with self-collar, collar band, hem vents and matte button with Antigua triangle logo at right sleeve. **S-3XL MSRP \$74.95**



55X Illusion Blue/
Wave



56X Bay/
Desert Sun



95W Skylight/
Optic White



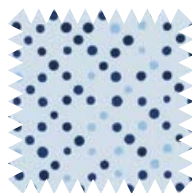
94W Optic White/
Black



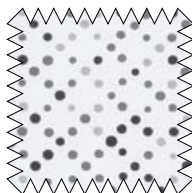
55X Illusion Blue/
Wave

Marbles A104901

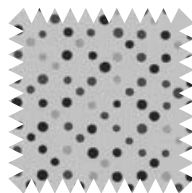
94% polyester/6% spandex sheen jersey with sublimated micro print, short sleeve polo with self-collar, collar band, hem vents and matte button with Antigua triangle logo at right sleeve. **S-3XL MSRP \$74.95**



57X Illusion Blue/
Nautical Navy
Multi



93W Optic
White/
Rock Multi



92W Grey/
Black Multi



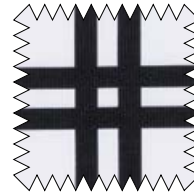
92W Grey/
Black Multi



37X Nautical Navy/
Bay

Bluegrass A104846

94% polyester/6% spandex matte jersey dyed fabric with sublimated box plaid print, short sleeve polo with flat knit collar, collar band, hem vents and matte button with Antigua triangle logo at right sleeve. **S-3XL MSRP \$74.95**



31X Black/
Optic White



36X Black/
Nautical Navy



37X Nautical
Navy/Bay



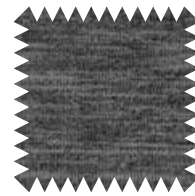
74W Nautical Navy
Heather

Spikes A104865

Brushed 88% polyester/12% spandex contrast slub fabric with corded drawcord, black zipper details with neck garage and Antigua triangle logo at right sleeve. **S-XXL MSRP \$94.95**



74W Nautical
Navy
Heather



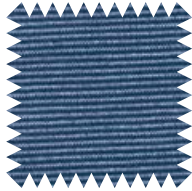
73W Rock
Heather



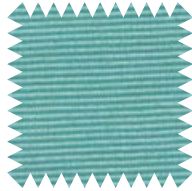
094 Black
Heather

Shore Bunker A104942

86% cotton/11% polyester/3% spandex solid ottoman fabric with stripe exterior details long sleeve 1/4 zip with Antigua triangle logo at right sleeve. **S-XXL MSRP \$79.95**



61X Nautical
Navy/
Optic White



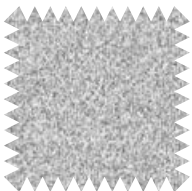
62X Harbor/
Optic White



62X Harbor/
Optic White

Swing Set A104787

92% polyester/8% spandex matte jersey long sleeve 1/4 zip CDP dyed heather with mock collar and neck garage with Antigua triangle logo at right sleeve. **S-3XL MSRP \$94.95**



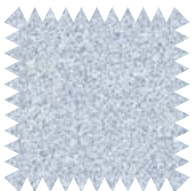
094 Black
Heather



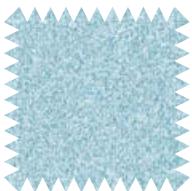
73W Rock
Heather



425 Light Grey
Heather



74W Nautical
Navy
Heather



71W Bay
Heather



69W Skylight
Heather



73W Rock
Heather

MEN'S FASHION - AVAILABLE FEB '24



Darter Polo A105054

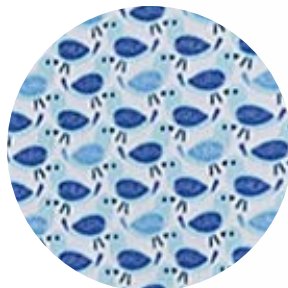
Poly Sheen. 94% polyester/6% spandex micro fish print short sleeve, 3-button polo with self-collar and side vents. Antigua triangle logo at wearer's right sleeve. **S-XXL MSRP \$74.95**



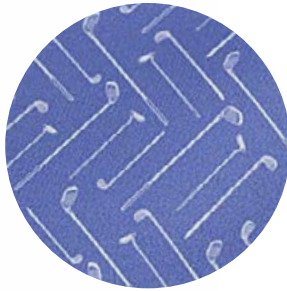
42Y Classic Blue/
Optic White

Hatch Polo A105052

Poly Sheen. 94% polyester/6% spandex micro bird print short sleeve, 3-button polo with self-collar and side vents. Antigua triangle logo at wearer's right sleeve. **S-XXL MSRP \$74.95**



43Y Powder Blue/
Classic Blue/Optic White



57Y Periwinkle/
Optic White

Clubs Polo A105332

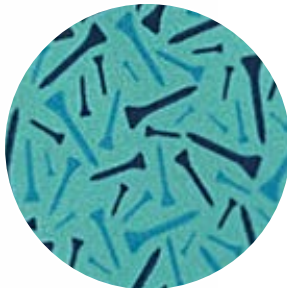
88% polyester/ 12% spandex golf club print short sleeve, 3-button polo with self-collar and side vents. Antigua triangle logo at wearer's right sleeve. **S-XXL MSRP \$74.95**



54Y Powder Blue/
Optic White



56Y Nautical
Navy/Powder Blue



60Y Aqua/
Lake Blue/Regatta

Pegs Polo A105334

88% polyester/ 12% spandex tossed tee print short sleeve, 3-button polo with self-collar and side vents. Antigua triangle logo at wearer's right sleeve. **S-XXL MSRP \$74.95**



58Y Optic White/
Blue Sky/
Powder Blue



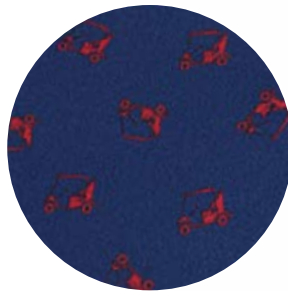
59Y Regatta/
Powder Blue/
Aurora

Carts Polo A105077

88% polyester/ 12% spandex golf cart print short sleeve, 3-button polo with self-collar and side vents. Antigua triangle logo at wearer's right sleeve. **S-XXL MSRP \$74.95**



65Y Pastel Lilac/
Nautical Navy



64Y Nautical
Navy/Hibiscus

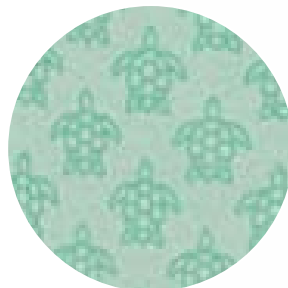


Dawdle Polo A105068

Poly Matte Heather. 93% polyester/ 7% spandex micro turtle print short sleeve, 3-button polo with self-collar and side vents. Antigua triangle logo at wearer's right sleeve. **S-XXL MSRP \$74.95**



71Y Powder Blue
HTR/Blue Sky



72Y Yucca HTR/
Aqua





75Y Blue Sky HTR/
Classic Blue

Flicker Polo A105072

Poly Matte Heather. 93% polyester/ 7% spandex burst print short sleeve, 3-button polo with self-collared and side vents. Antigua triangle logo at wearer's right sleeve. **S-XXL MSRP \$74.95**



78Y Dark Gray
HTR/Rock



76Y Pastel Lilac
HTR/Aster Purple



46Y Nautical Navy/
Spectra Green/Lavender

Multiply Polo A105061

88% polyester/ 12% spandex tossed tee print short sleeve, 3-button polo with self-collared and side vents. Antigua triangle logo at wearer's right sleeve. **S-XXL MSRP \$74.95**

Viper Polo A105064

Poly Matte Heather. 93% polyester / 7% spandex snake eye print short sleeve, 3-button polo with self-collar and side vents. Antigua triangle logo at wearer's right sleeve.

S-XXL MSRP \$74.95



69Y Powder Blue
HTR/Classic Blue



70Y Aurora HTR/
Carnation



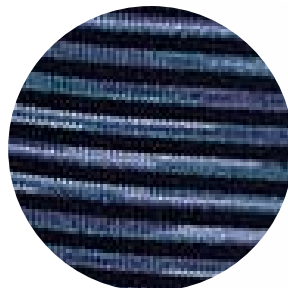
Civil 1/4 Zip Mock A105189

88% polyester / 12% spandex brushed multi-coloured quarter zip mock. Self-collar and waistband. Antigua triangle logo at wearer's right cuff.

S-XXL MSRP \$79.95



201 Black Multi



12Z Nautical
Navy Multi





97Y Gray

Objection Jacket A105036

90% polyester/10% spandex double brushed performance full zip, mock neck jacket.

Antigua triangle logo at wearer's right cuff.

S-XXL MSRP \$94.95



96Y Nautical
Navy



WOMEN'S FASHION - AVAILABLE SEPT '23



28X Nautical Navy/
Illusion Blue Multi

Women's Feature A104930

94% polyester/6% spandex matte jersey fabric with solid and sublimated conversional prints, short sleeve polo with self-collar, collar band, hem vents and matte button with Antigua triangle logo at right sleeve. **S-XXL MSRP \$54.95**



27X Black/
Bubblegum Multi



28X Nautical
Navy/
Illusion Blue Multi



29X Mauve/
Bubblegum



73X Rock/
Optic White Multi



73X Rock/
Optic White Multi

Women's Approach A104811

94% polyester/6% spandex matte jersey fabric with solid and sublimated conversional prints, sleeveless polo with self-collar, collar band, hem vents and matte button with Antigua triangle logo at right hem. **S-XXL MSRP \$54.95**



27X Black/
Bubblegum Multi



28X Nautical
Navy/
Illusion Blue Multi



29X Mauve/
Bubblegum



73X Rock/
Optic White Multi

Women's Motivated A104931

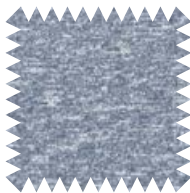
90% polyester/10% spandex brushed heather jersey fabric with self-collar band, hem vents and matte buttons with Antigua triangle logo at right sleeve. S-XXL **MSRP \$54.95**



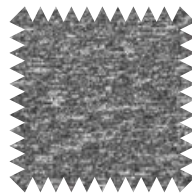
32X Bubblegum
Heather



69W Skylight
Heather



74W Nautical
Navy
Heather



094 Black
Heather



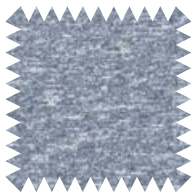
32X Bubblegum
Heather

Women's Confront A104935

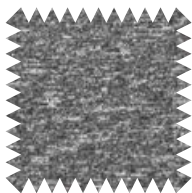
90% polyester/10% spandex brushed heather jersey fabric long sleeve 1/4 zip with neck garage with Antigua triangle logo at right sleeve. S-XXL **MSRP \$64.95**



32X Bubblegum
Heather



74W Nautical
Navy
Heather



094 Black
Heather



094 Black
Heather



27X Black/
Bubblegum Multi

Women's Wiki A104985

94% polyester/6% spandex matte jersey fabric with solid and sublimated conversional prints, long sleeve 1/4 zip with Antigua triangle logo at right sleeve. S-XXL **MSRP \$59.95**



27X Black/
Bubblegum Multi



28X Nautical
Navy/
Illusion Blue Multi



29X Mauve/
Bubblegum



73X Rock/
Optic White Multi



WOMEN'S FASHION - AVAILABLE FEB '24



36Z Lavender

Recap Polo A105350

Brushed Heather Poly. 88% polyester/ 12% spandex sleeveless, 3-button polo with rib collar and sleeve opening. Antigua triangle logo at wearer's right hem. **S-XL MSRP \$54.95**



43Z Powder Blue



25Z Powder Blue/
Mist/Blue Sky

Examine Polo A105345

Poly Sheen. 88% polyester/ 12% spandex Paradise Birds print sleeveless, 3-button polo with rib collar and sleeve opening, and side vents. Antigua triangle logo at wearer's right hem. **S-XL MSRP \$59.95**

Chapter Polo A105271

Poly Sheen. 88% polyester/ 12% spandex
Mystic Floral geo print short sleeve, 3-button
polo with self collar and side vents. Antigua
triangle logo at wearer's right sleeve. **S-XL**
MSRP \$59.95



24Z Optic White/Powder
Blue/Pastel Lilac

Vision Polo A105115

Poly Sheen. 88% polyester/ 12% spandex
Paradise Birds print short sleeve, 3-button
polo with self collar and side vents. Antigua
triangle logo at wearer's right sleeve. **S-XL**
MSRP \$59.95



25Z Powder Blue/
Mist/Blue Sky



Limit Polo A105117

Poly Sheen. 88% polyester/ 12% spandex Terra print short sleeve, 3-button polo with self collar and side vents. Antigua triangle logo at wearer's right sleeve. **S-XL MSRP \$59.95**

26Z Classic Blue/
Mist/Deep Sea



Effort 1/4 Zip Mock A105273

Poly Sheen. 88% polyester/ 12% spandex Mystic Floral geo printed long sleeve, 1/4 zip pullover mock. Antigua triangle logo at wearer's right cuff. **S-XL MSRP \$64.95**

24Z Optic White/
Powder Blue/
Pastel Lilac

MEN'S & WOMEN'S ESSENTIALS



Women's Peak Polo
33R Black Heather/
Shadow

AVAILABLE NOW

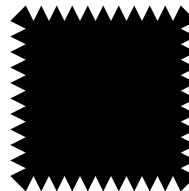


05
Navy

Tribute A104197

100% polyester interlock knit solid short sleeve polo with self-fabric collar, open cuff, narrow 3-button placket, and side slits. Antigua triangle patch at right cuff. UPF 50+. S-3XL **MSRP \$49.95**

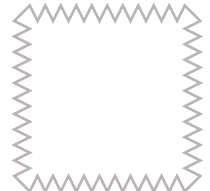
*Women's matchable style



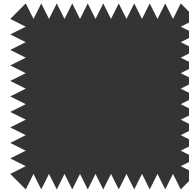
*10 Black



*344 Columbia Blue



*01 White



*76 Smoke



*05 Navy



*22 Dark Red

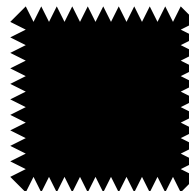


01
White

Women's Tribute A104198

100% polyester interlock knit solid short sleeve polo with self-fabric collar, 2-button "Y" placket, open cuff and princess seams. Antigua triangle patch at right cuff. S-XXL **MSRP \$49.95**

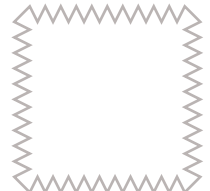
*Men's matchable style



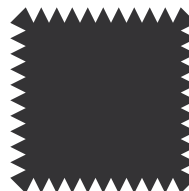
*10 Black



*344 Columbia Blue



*01 White



*76 Smoke



*05 Navy

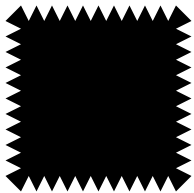


*22 Dark Red

Tribute Pullover A104644

100% polyester interlock knit long sleeve 1/4 zip pullover. Self-fabric collar, open cuff & bottom hem. Antigua triangle patch at right cuff. UPF 50+. S-3XL **MSRP \$69.95**

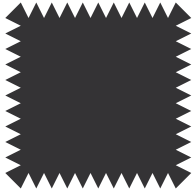
*Women's matchable style



*010 Black



*005 Navy



*076 Smoke

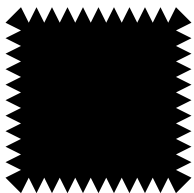


005
Navy

Women's Tribute Pullover A104682

100% polyester interlock knit long sleeve 1/2 zip pullover. Self-fabric collar, open cuff & bottom hem. Antigua triangle patch at right cuff. UPF 50+. S-XXL **MSRP \$69.95**

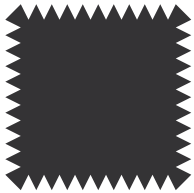
*Men's matchable style



*010 Black



*005 Navy



*076 Smoke



076
Smoke

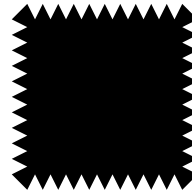


010
Black

Flex A104591

100% polyester solid interlock knit short sleeve moisture wicking polo. Three button placket and flat knit collar. Open cuff. Tear away label at the back neck. Antigua triangle logo at wearer's right sleeve. **S-3XL**
MSRP \$34.95

*Women's matchable style



*010 Black



*27R Cobalt



*29R Shadow



*005 Navy

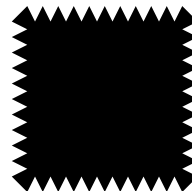


005
Navy

Women's Flex A104597

100% polyester solid interlock knit short sleeve moisture wicking polo. Four button placket and flat knit collar. Open cuff. Tear away label at the back neck. Antigua triangle logo at wearer's right sleeve. **S-XXL**
MSRP \$34.95

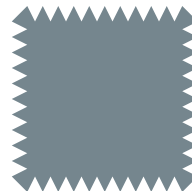
*Men's matchable style



*010 Black



*27R Cobalt



*29R Shadow

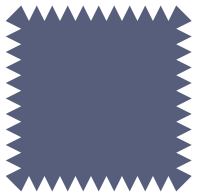


*005 Navy

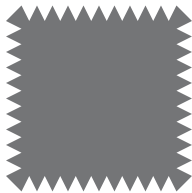
Peak A104593

56% cotton/44% polyester blend heather jersey knit short sleeve polo with three button placket and self fabric collar. Double needle tonal stitching detail at shoulder forward, cuff & bottom hem. Tear away label at back neck. Antigua triangle logo at wearer's right sleeve. **S-3XL MSRP \$39.95**

*Women's matchable style



*35R Navy Heather/
Light Navy



*33R Black
Heather/Shadow

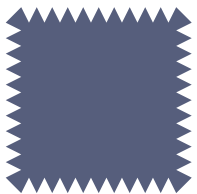


35R Navy
Heather/
Light Navy

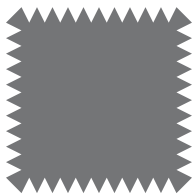
Women's Peak A104599

56% cotton/44% polyester blend heather jersey knit short sleeve polo with "V" placket and self fabric collar. Double needle tonal stitching detail at shoulder forward, cuff & bottom hem. Tear away label at back neck. Antigua triangle logo at wearer's right sleeve. **S-XXL MSRP \$39.95**

*Men's matchable style



*35R Navy Heather/
Light Navy



*33R Black
Heather/Shadow



33R Black
Heather/
Shadow

AVAILABLE NOW



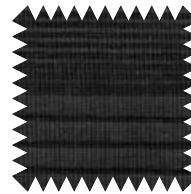
201 Black Multi

Compass A104364

95% polyester/5% spandex Desert Dry™ moisture wicking tonal stripe short sleeve polo with self-fabric collar, open cuff, narrow 3-button placket, and side slits. Antigua triangle patch at right cuff. S-3XL

MSRP \$54.95

*Women's matchable style



*201 Black Multi



*891 Carbon Multi



*622 Dark Red/Multi



*634 Dark Pine Multi



*658 Navy Multi



*986 Dark Purple Multi



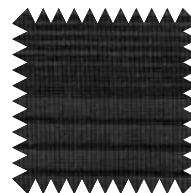
622 Dark Red

Women's Compass A104365

95% polyester/5% spandex Desert Dry™ moisture wicking jersey knit tonal stripe short sleeve polo with self collar, 'Y' placket and open cuffs and side slits. Antigua triangle "A" patch at right cuff. S-XXL

MSRP \$54.95

*Men's matchable style



*201 Black Multi



*891 Carbon Multi



*622 Dark Red/Multi



*634 Dark Pine Multi



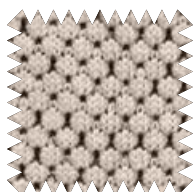
*658 Navy Multi



*986 Dark Purple Multi

Course Jacket A104633

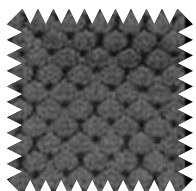
100% polyester heather honeycomb pattern face with brushed back full zip jacket. Solid polyester jersey face fleece back insets. On seam zip hand pockets and solid woven fabric chest pocket with zipper. Open bottom hem & cuff. Antigua silicone "A" logo at right cuff. **S-3XL MSRP \$99.95**
 *Women's matchable style



*79K Oatmeal
Heather Multi



*031 Navy
Heather Multi



*13D Charcoal
Heather Multi



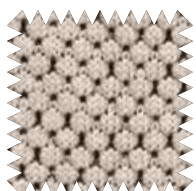
*830 Black
Heather Multi



13D Charcoal
Heather Multi

Women's Course Jacket A104635

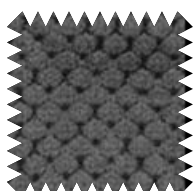
100% polyester heather honeycomb pattern full zip jacket with solid jersey face fleece insets. On seam zipper hand pockets. Open cuff & bottom hem. Antigua silicone "A" logo at right cuff. **S-XXL MSRP \$99.95**
 *Men's matchable style



*79K Oatmeal
Heather Multi



*031 Navy
Heather Multi



*13D Charcoal
Heather Multi



*830 Black
Heather Multi



830 Black
Heather Multi



ANTIGUA

A P P A R E L

Arrive Comfortably

ACI BRANDS INC.

2616 Sheridan Garden Dr, Oakville, ON L6J 7Z2

Tel: 905-829-1566 Fax: 905-829-1766

Email: golf@acibrands.com

SS06894-R2-0823

2024ANTCAT

www.acibrands.com