



# LOPEZ

*Defining the Women's Game™*

## **NANCY LOPEZ GOLF APPAREL 2023 COLLECTIONS**





## NANCY LOPEZ

Nancy Lopez is one of the most famous and recognizable women in golf. Exploding onto the LPGA Tour in 1977, the women's game has benefited immensely from Nancy's superstar performance and personality.

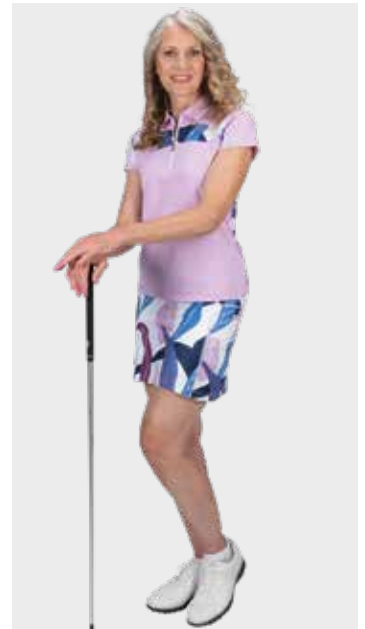
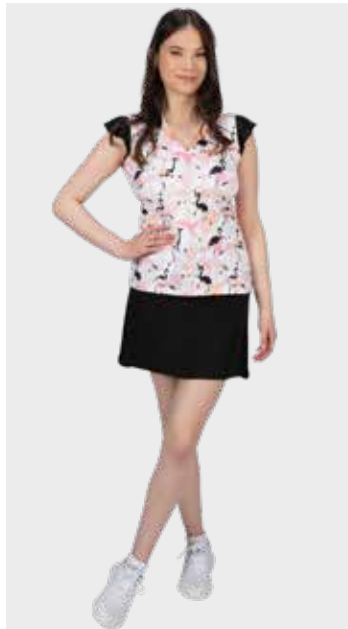
Today, Nancy Lopez is revered for the excellence of her performance inside the tournament ropes. At the same time, she is adored for her natural ability to reach out and touch the hearts of her fans in a real and effortless manner. The essence of Nancy Lopez goes beyond being a world-class athlete; she's a dedicated wife, a mother of three daughters and a person with true heart and soul. Nancy Lopez has created an indelible mark in the history books, as well as in the hearts of those who follow her.

## NANCY LOPEZ GOLF APPAREL

Nancy Lopez Golf is pleased to offer an exciting assortment of ladies' golf apparel designed to fit and flatter women of all shapes and sizes.

## PLUS SIZE COLLECTION

Nancy Lopez Golf offers plus sizes 1X, 2X & 3X in all styles. You won't find this much plus size style, comfort and variety anywhere else! Visit our website to view the entire Lopez Plus Collection.



## TABLE OF CONTENTS:

ART DECO COLLECTION

PAGE 2 - 9

CARIBBEAN COLLECTION

PAGE 10 - 19

ESSENTIALS COLLECTION

PAGE 20 - 28

HEADWEAR COLLECTION

PAGE 29 - 30

GLOVES COLLECTION

PAGE 31 - 32

ACCESSORIES COLLECTION

PAGE 33



# **ART DECO COLLECTION**

**NANCY LOPEZ APPAREL**







280  
Pine Multi



038  
Navy Multi

### Shilo Sleeveless Polo L465101

90% polyester / 10% spandex solid jacquard diamond mesh and printed jersey sleeveless polo with Delux Dri™ moisture wicking technology. Solid self mandarin collar and open y-neck with single snap. New curved hem design. Lopez Flame icon at right hip.

S-XL, LOPEZ PLUS: 1X, 2X,3X.



201  
Black Multi

230  
White Multi

280  
Pine Multi

### Shift Sleeveless Polo L465102

90% polyester / 10% spandex yarn dye jacquard sleeveless polo with Delux Dri™ moisture wicking technology. Contrast, solid self-collar, and open y-neck with bar tack detail. New curved hem design. Lopez Flame icon at right hip.

S-XL, LOPEZ PLUS: 1X, 2X,3X.



038  
Navy Multi

201  
Black Multi

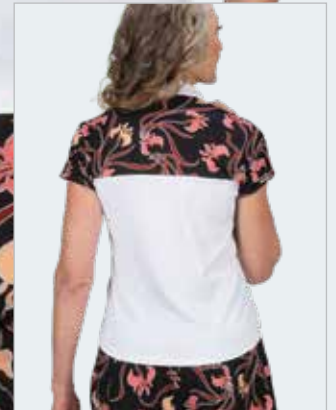
226  
White / Black Multi



201  
Black Multi



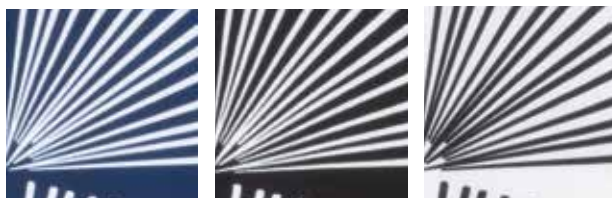
230  
White Multi



### Fanny Sleeveless Polo L465103

90% polyester / 10% spandex printed jersey sleeveless polo with Delux Dri™ moisture wicking technology. Mock collar, contrast zip placket with metallic jewel zipper pull and contrast sleeve trim. Lopez Flame icon at right hip.

S-XL, LOPEZ PLUS: 1X, 2X,3X.



038  
Navy Multi

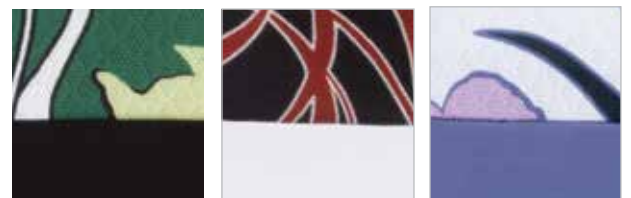
201  
Black Multi

230  
White Multi

### Minx Short Sleeve Polo L465201

90% polyester / 10% spandex printed jacquard diamond mesh and solid jersey short sleeve polo with Delux Dri™ moisture wicking technology. Mandarin collar and open y-neck with single snap. New curved hem design. Lopez Flame icon at right hip.

S-XL, LOPEZ PLUS: 1X, 2X,3X.



201  
Black Multi

230  
White Multi

281  
Corsica Multi





230  
White Multi

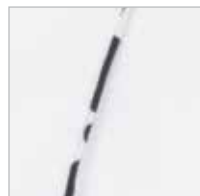


201  
Black Multi

### Splendor Short Sleeve Polo L465202

90% polyester / 10% spandex printed and solid jersey short sleeve polo with Delux Dri™ moisture wicking technology. Contrast printed collar, sleeve cuffs, piping details and zip placket with metallic jewel zipper pull. Lopez Flame icon at right hip.

S-XL, LOPEZ PLUS: 1X, 2X,3X.



230  
White Multi



280  
Pine Multi



281  
Corsica Multi

### Lux Short Sleeve Polo L465203

90% polyester / 10% spandex printed jersey short sleeve polo with Delux Dri™ moisture wicking technology. Mock collar and zip placket with metallic jewel zipper pull. Lopez Flame icon at right hip.

S-XL, LOPEZ PLUS: 1X, 2X,3X.



201  
Black Multi



280  
Pine Multi



281  
Corsica Multi



181  
Navy/White

### Aspiration Long Sleeve Tee L465302

90% polyester / 10% spandex printed jersey long sleeve top with Delux Dri™ moisture wicking technology and UPF 50+ sun protection. Crew neck and solid mesh insets under sleeve. Lopez Flame icon at right hip.

S-XL, LOPEZ PLUS: 1X, 2X,3X.



181  
Navy/White

185  
Black/White







### Flirty Skort (Lux Print) L465903

88% polyester / 12% spandex printed jersey, 18" pull-on skort with Delux Dri™ moisture wicking technology. 85% polyester / 15% spandex solid woven, pleated flounce. Side hand pockets and back slit pockets. Lightweight knit undershort. Lopez Flame icon above back pocket. S-3XL



185  
Black/White



301  
Corsica/Navy Multi



301  
Corsica/Navy Multi

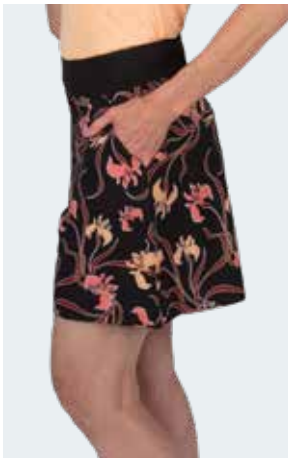


### Shilo Romper Short L465901

85% polyester / 15% spandex printed woven, 18" pull-on romper short with Delux Dri™ moisture wicking technology. Solid jersey elastic waistband. Side hand pockets and back slit pockets. Lopez Flame icon above back pocket. S-3XL



201  
Black Multi



201  
Black Multi



201  
Black Multi

### Lux Dress L465902

90% polyester / 10% spandex printed jersey sleeveless golf dress with Delux Dri™ moisture wicking technology. Mandarin collar with zip placket and metallic jewel zipper pull. Contrast insets and side hand pockets. Lopez branding at right shoulder. S-3XL

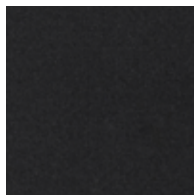


201  
Black Multi



### Kick Shortie L460902

92% polyester / 8% spandex jersey pull-on bike short with Delux Dri™ moisture wicking technology. 5.50" inseam (5.75" for sizes XL-3XL) and extra-wide waistband. Lightweight design, to be worn under any golf skirt or dress. Lopez Flame icon at back waistband. Ships in a retail ready clear pouch. S-3XL



010  
Black





# CARIBBEAN COLLECTION

NANCY LOPEZ APPAREL





201  
Black Multi



292  
Sherbet Multi

### Bahama Sleeveless Polo L464101

90% polyester / 10% spandex solid mesh and printed jersey sleeveless polo with Delux Dri™ moisture wicking technology. Solid mandarin collar and open y-neck with single snap. New curved hem design. Lopez Flame icon at right hip.

S-XL, LOPEZ PLUS: 1X, 2X,3X.



201  
Black Multi

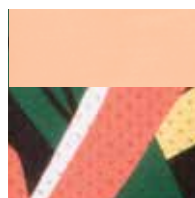


230  
White Multi

### Breeze Short Sleeve Polo L464201

90% polyester / 10% spandex jersey short sleeve polo with Delux Dri™ moisture wicking technology. Self-collar, contrast zip placket and printed mesh chest insets and back panel. New curved hem design. Lopez Flame icon at right hip.

S-XL, LOPEZ PLUS: 1X, 2X,3X.



292  
Sherbet Multi



293  
Lilac Multi





230  
White Multi

### Flamingo Sleeveless Polo L464102

90% polyester / 10% spandex printed jersey sleeveless polo with Delux Dri™ moisture wicking technology. Mandarin collar and open v-neck and solid ruffle cap sleeve. Lopez Flame icon at right hip.

S-XL, LOPEZ PLUS: 1X, 2X,3X.



226  
White/Black Multi

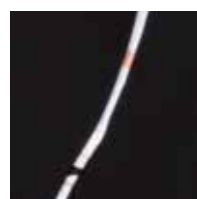


299  
Navy/Lilac Multi

### Folly Short Sleeve Polo L464203

90% polyester / 10% spandex printed and solid jersey short sleeve polo with Delux Dri™ moisture wicking technology. Contrast printed collar, sleeve cuffs, piping details and zip placket with metallic jewel zipper pull. Lopez Flame icon at right hip.

S-XL, LOPEZ PLUS: 1X, 2X,3X.



201  
Black Multi



230  
White Multi



201  
Black Multi

230  
White Multi

293  
Lilac Multi

### Trinity Short Sleeve Polo L464202

90% polyester / 10% spandex printed jersey short sleeve polo with Delux Dri™ moisture wicking technology. Solid self-collar, open y-neck with bar tack detail and asymmetrical engineered print on front panel. New curved hem design. Lopez Flame icon at right hip.

S-XL, LOPEZ PLUS: 1X, 2X,3X.



201  
Black Multi



230  
White Multi



293  
Lilac Multi





294  
Pistachio Multi



658  
Navy Multi

### Lush Short Sleeve L464204

90% polyester / 10% spandex printed jersey short sleeve polo with Delux Dri™ moisture wicking technology. Mock collar and zip placket with metallic jewel zipper pull. Lopez Flame icon at right hip.

S-XL, LOPEZ PLUS: 1X, 2X,3X.

### Lush Reverse Clip Visor L464801

90% polyester / 10% spandex jersey, fully reversible clip visor. Contrast print on reverse side. Embroidered Lopez branding on band & Flame icon on brim. ONE SIZE



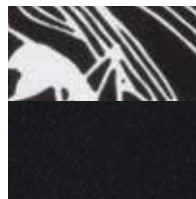
201  
Black Multi



294  
Pistachio Multi



658  
Navy Multi



201  
Black Multi



658  
Navy Multi



201  
Black Multi



226  
White/Black Multi

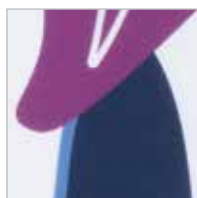
### Balance Long Sleeve Polo L464301

90% polyester / 10% spandex printed jersey long sleeve polo with Delux Dri™ moisture wicking technology and UPF 50+ sun protection. Self-collar with zip placket, solid jersey under collar and mesh insets under sleeves. Lopez Flame icon at right hip.

S-XL, LOPEZ PLUS: 1X, 2X,3X.



201  
Black Multi



230  
White Multi



185  
Black/White



226  
White/Black Multi



### Aspiration Long Sleeve Tee L464302

90% polyester / 10% spandex printed jersey long sleeve tee with Delux Dri™ moisture wicking technology and UPF 50+ sun protection. Crew neck and solid mesh insets under sleeve. Lopez Flame icon at right hip.

S-XL, LOPEZ PLUS: 1X, 2X,3X.



### Jazzy Jacket L426301

88% polyester / 12% spandex printed jersey full zip jacket with Delux Dri™ moisture wicking technology. Cozy brushed back fabric, mock collar & side hand pockets. Rounded hem and cuff detail with thumbhole for added warmth. Lopez branding at right hip.

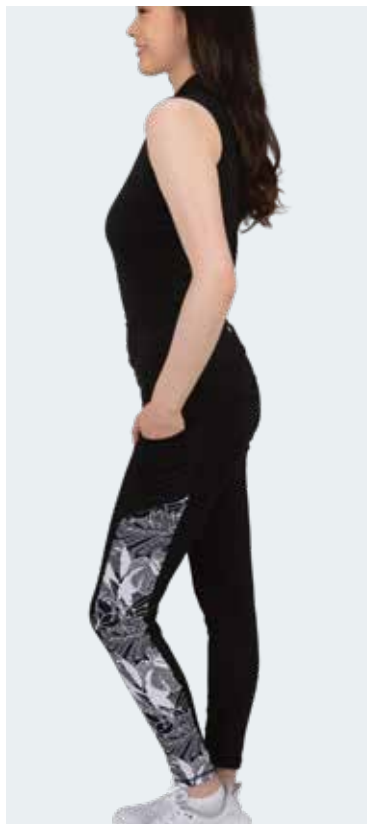
S-XL, LOPEZ PLUS: 1X, 2X,3X.



201  
Black Multi

### Power Legging L464904

84% polyester / 16% spandex jersey pull-on legging with Delux Dri™ moisture wicking technology. 26" inseam, extra-wide waistband and contrast printed leg insets. Slip tech pockets on side seams. Lopez Flame icon at back waistband. S-3XL



185  
Black/White



201  
Black Multi



226  
White/Black Multi

### Flamingo Romper Short L464905

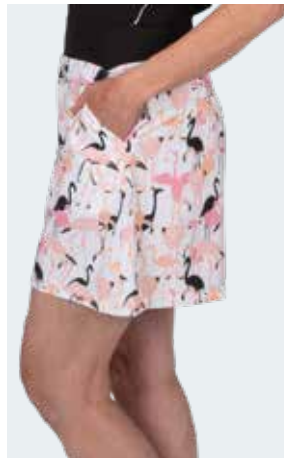
85% polyester / 15% spandex printed woven, 18" pull-on romper short with Delux Dri™ moisture wicking technology. Solid jersey elastic waistband. Side hand pockets and back slit pockets. Lopez Flame icon above back pocket. S-3XL



226  
White/Black Multi



299  
Navy/Lilac Multi



### Pixie Hat L464802

95% polyester / 5% spandex printed woven large bill cap with Velcro back closure. Lopez branding on front bill and Lopez Flame icon on back panel. ONE SIZE



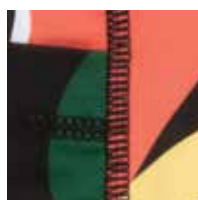
226  
White/Black Multi  
(Flamingo Print)





### Pro Skort (Bahama Print) L464901

88% polyester / 12% spandex printed jersey 18" pull-on skort with Delux Dri™ moisture wicking technology. Side hip pockets and back slit pockets. Lightweight knit undershort. Lopez Flame icon above back pocket. S-3XL



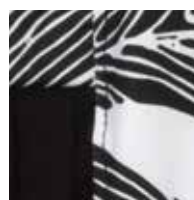
201  
Black Multi



230  
White Multi

### Flirty Skort (Lush Print) L464903

88% polyester / 12% spandex printed jersey, 18" pull-on skort with Delux Dri™ moisture wicking technology. 85% polyester / 15% spandex solid woven, pleated flounce. Side hand pockets and back slit pockets. Lightweight knit undershort. Lopez Flame icon above back pocket. S-3XL



201  
Black Multi



201  
Black Multi

### Bahama Dress L464902

90% polyester / 10% spandex printed jersey sleeveless golf dress with Delux Dri™ moisture wicking technology. Mandarin collar with zip placket and metallic jewel zipper pull. Contrast insets and side hand pockets. Lopez branding at right shoulder. S-3XL



201  
Black Multi



230  
White Multi



### Pixie Hat L464802

95% polyester / 5% spandex printed woven large bill cap with Velcro back closure. Lopez branding on front bill and Lopez Flame icon on back panel. ONE SIZE



201  
Black Multi  
(Bahama Print)





***ESSENTIALS  
COLLECTION***

***NANCY LOPEZ APPAREL***



285  
Sherbet



286  
Pistachio

### Legacy Sleeveless Polo L429101

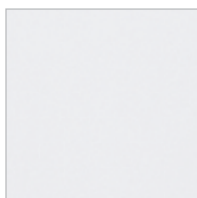
100% polyester micro flat knit pique sleeveless polo with Delux Dri™ moisture wicking technology. Self-collared with open V-neck. Lopez Flame icon embroidered at right hip.

S-XL, LOPEZ PLUS: 1X, 2X,3X.

### Legacy Short Sleeve Polo L429201

100% polyester micro flat knit pique short sleeve polo with Delux Dri™ moisture wicking technology. Self-collared with 4-button placket. Lopez Flame icon at right hip.

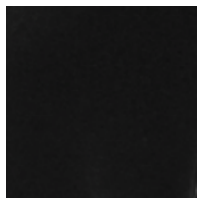
S-XL, LOPEZ PLUS: 1X, 2X,3X.



001  
White



005  
Navy



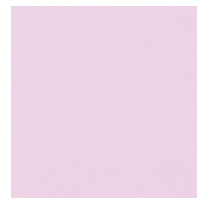
010  
Black



285  
Sherbet



286  
Pistachio



287  
Lilac



291  
Corsica





287  
Lilac



288  
Geranium

### Journey Sleeveless Polo L459101

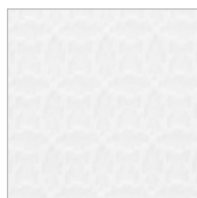
92% polyester / 8% spandex jacquard knit sleeveless polo with Delux Dri™ moisture wicking technology. Self-collared with open v-neck and 2-button placket. Lopez Flame icon embroidered at right hip.

S-XL, LOPEZ PLUS: 1X, 2X,3X.

### Journey Short Sleeve Polo L459201

92% polyester / 8% spandex jacquard short sleeve polo with Delux Dri™ moisture wicking technology. Self-collared with 4-button placket. Lopez Flame icon embroidered at right hip.

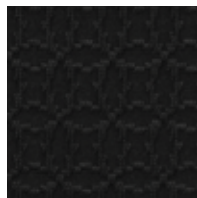
S-XL, LOPEZ PLUS: 1X, 2X,3X.



001  
White



005  
Navy



010  
Black



287  
Lilac



288  
Geranium



290  
Pine



291  
Corsica



181  
Navy/White

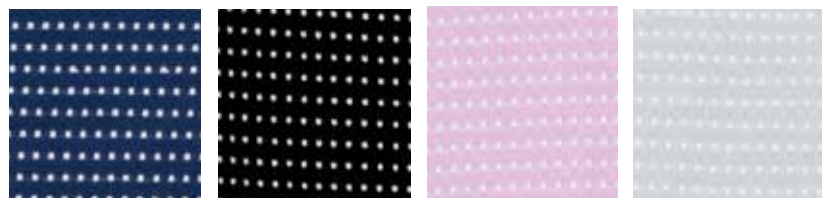


001  
White

### Zone Sleeveless Polo L459102

100% polyester jacquard sleeveless polo with Delux Dri™ moisture wicking technology. Convertible mock collar with zip placket and metallic jewel zipper pull. Contrast mesh back inset & contrast cover stitch detail. Lopez Flame icon embroidered at right hip.

S-XL, LOPEZ PLUS: 1X, 2X,3X.



181  
Navy/White

185  
Black/White

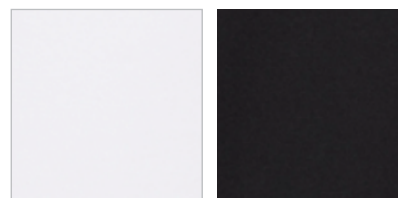
295  
Lilac/White

539  
Silver/White

### Aspiration Long Sleeve Tee L461302

90% polyester / 10% spandex solid jersey long sleeve top with Delux Dri™ moisture wicking technology and UPF 50+ sun protection. Crew neck and solid mesh insets under sleeve. Lopez Flame icon at right hip.

S-XL, LOPEZ PLUS: 1X, 2X,3X.



001  
White

010  
Black







185  
Black/White



230  
White Multi

### Jazzy Jacket L426301

88% polyester / 12% spandex jersey full zip jacket with Delux Dri™ moisture wicking technology. Cozy brushed back fabric, mock collar & side hand pockets. Rounded hem and cuff detail with thumbhole for added warmth. Lopez branding at right hip.

S-XL, LOPEZ PLUS: 1X, 2X,3X.

### Zippy Vest L461402

100% polyester printed woven full zip wind resistant vest. Contrast jersey lining and stitch details with front hand pockets and rounded hem. Lopez branding at right hip.

S-XL, LOPEZ PLUS: 1X, 2X,3X.



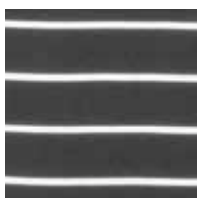
001  
White



005  
Navy



010  
Black



185  
Black/White (Stripe)



201  
Black Multi



230  
White Multi

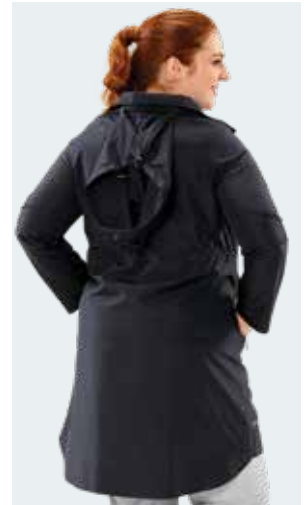
### Beyond Jacket L460401

100% polyester woven long sleeve, water resistant jacket. Full zip placket with jewel detail on zipper pulls and inside drawcord at waist. Front hand zippered pockets and rounded drop hem. Hidden collar zip pocket with hood. Lopez Flame icon at right hem.

S-XL, LOPEZ PLUS: 1X, 2X,3X.



010  
Black



010  
Black



**Power Legging L463904/L460904 (Stripe)**

84% polyester / 16% spandex jersey pull-on legging with Delux Dri™ moisture wicking technology. 26" inseam, extra-wide waistband and contrast printed leg insets. Slip tech pockets on side seams. Lopez Flame icon at back waistband. S-3XL



010  
Black



094  
Black Heather



185  
Black/White (Stripe)



094  
Black Heather



010  
Black

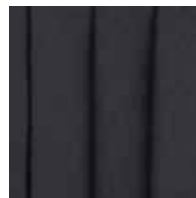
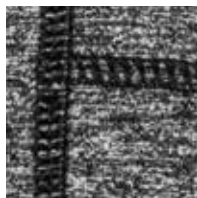
001  
White

### Pro Skort L459901

88% polyester / 12% spandex jersey 18" pull-on skort with Delux Dri™ moisture wicking technology. Side hand pockets and back slit pockets. Lightweight knit undershort. Lopez Flame icon above back pocket. S-3XL

### Flirty Skort L461903

88% polyester / 12% spandex jersey, 18" pull-on skort with Delux Dri™ moisture wicking technology. 85% polyester / 15% spandex woven, pleated flounce. Side hand pockets and back slit pockets. Lightweight knit undershort. Lopez Flame icon above back pocket. S-3XL



001  
White

010  
Black

094  
Black Heather

185  
Black/White (Stripe)

001  
White

010  
Black





### Ace Skort L463901

85% polyester / 15% spandex woven, 18" pull-on skort with Delux Dri™ moisture wicking technology. Front hand pockets and back slit pockets. Lightweight knit undershort. Lopez Flame icon above back pocket. S-3XL

### Ace Short L463902

85% polyester / 15% spandex woven pull-on short with Delux Dri™ moisture wicking technology. Front hand pockets and back slit pockets. 9" inseam. Lopez Flame icon above back pocket. S-3XL

### Ace Capri L463903

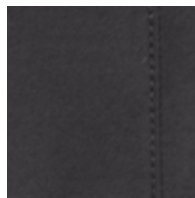
85% polyester / 15% spandex woven pull-on capri with Delux Dri™ moisture wicking technology. Front hand pockets and back slit pockets. 25" inseam. Lopez Flame icon above back pocket.. S-3XL



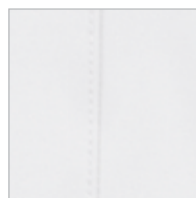
001  
White  
(Skort Only)



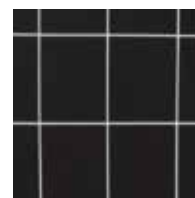
005  
Navy



010  
Black



020  
Silver



201  
Black Multi (Plaid)  
(Skort & Short Only)

## HEADWEAR COLLECTION



### Pixie Hat L463801

95% polyester / 5% spandex woven large bill cap with Velcro back closure. Lopez branding on front bill and Lopez Flame icon on back panel. ONE SIZE



005  
Navy



010  
Black



201  
Black Multi (Plaid)



230  
White Multi (Plaid)



### Pixie Hat L464802 - AVAILABLE 2/1/23

95% polyester / 5% spandex woven large bill cap with Velcro back closure. Lopez branding on front bill and Lopez Flame icon on back panel. ONE SIZE



201  
Black Multi  
(Bahama Print)

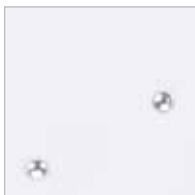


226  
White/Black Multi  
(Flamingo Print)



### Bling Visor L463802 - AVAILABLE 11/1/22

100% polyester woven visor with rhinestone detail on full coverage bill. Comfort elastic back with Lopez Flame icon. Lopez branding on front panel. ONE SIZE



001  
White



010  
Black



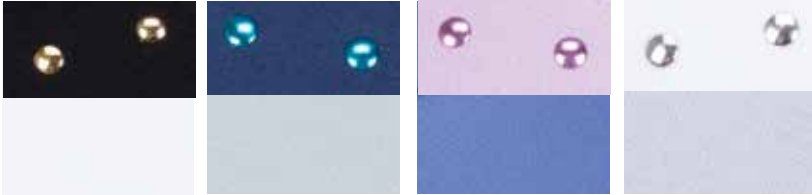
291  
Corsica



## HEADWEAR COLLECTION

### Club Visor L427801 - AVAILABLE 2/1/23

90% polyester / 10% spandex jersey fully reversible visor with metallic stud detail. Contrast color on reverse side. Embroidered Lopez branding on band & Flame icon on brim. ONE SIZE



185  
Black/White

200  
Navy/Silver

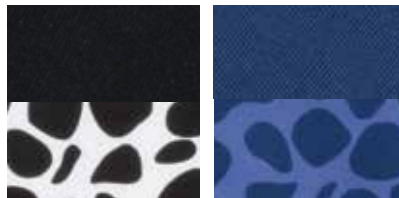
284  
Lilac/Corsica

768  
White/Silver



### Lux Visor L465801 - AVAILABLE 11/1/22

90% polyester / 10% spandex jersey, fully reversible clip visor. Contrast print on reverse side. Embroidered Lopez branding on band & Flame icon on brim. ONE SIZE



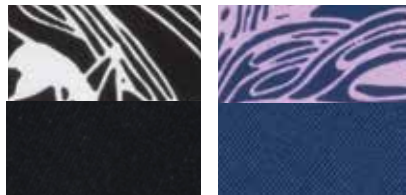
185  
Black/White

301  
Corsica/Navy Multi



### Lush Visor L464801 - AVAILABLE 2/1/23

90% polyester / 10% spandex jersey, fully reversible clip visor. Contrast print on reverse side. Embroidered Lopez branding on band & Flame icon on brim. ONE SIZE



201  
Black Multi

658  
Navy Multi



# NANCY LOPEZ PRINTED GOLF GLOVES

Show off your style with Nancy Lopez Golf gloves, available in a wide range of vibrant colours and signature prints.

**Lightweight, Cool Comfort** stretch Spandex allows skin to stay cool & dry, for ultimate breathability.

**Premium Cabretta Leather** – soft, premium sheepskin cabretta leather palm ensures a soft, comfortable feel and a consistent, durable grip.

**UV 50+ Sun Protection** ensures ultimate coverage and protection from the sun's harmful UV rays.

**Snap-off Ball Marker** offers a quick and easy solution to mark your ball.



Snap-off Ball Marker



## GOLF GLOVE COLLECTION



### FULL FINGER GLOVE NLMF22

53% Printed Spandex / 43% Cabretta Leather / 4% Synthetic printed full finger golf glove. Soft, premium cabretta leather palm combined with printed lycra. UPF50+ sun protection. Velcro wrist closure with Lopez branding. S-XL



Jui (Juicy Plaid)



Diz (Dizzy)



Rus (Rush)



Rhy (Rhythm)



### HALF FINGER GLOVE NLMH22

48% Printed Spandex / 47% Cabretta Leather / 5% Synthetic printed half finger golf glove. Soft, premium cabretta leather palm combined with printed lycra. UPF50+ sun protection. Velcro wrist closure with Lopez branding. S-XL



Jui (Juicy Plaid)



Diz (Dizzy)



Rus (Rush)



Rhy (Rhythm)



### 12oz Insulated Tumbler NLTMBWH

Nancy Lopez's Insulated Tumbler is perfectly suited for the outdoors and keeps your drink at its ideal temperature. Made with lightweight, lead-free stainless steel, the 12-ounce, double-walled and vacuum insulated tumbler features a thermal lining, keeps hot liquids hot for 3 hours and cold liquids cold for 9 hours.



### Reflective Waistpack NL9830BK

Keep your personal belongings close at hand and easily accessible. The Lopez waist pack features a large, multi-layered pocket, perfect for storing phones, keys, cards and any other quick-grab items. The adjustable strap fits up to a 47" waist. The waist pack's waterproof exterior keeps your belongings dry and protected. Its reflective strip provides maximum visibility, even in low light situations.





# WOMEN'S APPAREL SIZE CHART

## CATALOGUE INDEX

### ART DECO COLLECTION

SHILO POLO	03
SHIFT POLO	03
FANNY POLO	04
MINX POLO	04
SPLENDOR POLO	05
LUX POLO	05
ASPIRATION LONG SLEEVE	06
FLIRTY SKORT (LUX PRINT)	07
LUX VISOR	07
SHILO ROMPER SHORT	08
LUX DRESS	09
KICK SHORTIE	09

### BAHAMA COLLECTION

BAHAMA POLO	11
BREEZE POLO	11
FLAMINGO POLO	12
FOLLY POLO	12
TRINITY POLO	13
LUSH POLO	14
LUSH VISOR	14
BALANCE LONG SLEEVE	15
ASPIRATION LONG SLEEVE	15
JAZZY JACKET (LUSH PRINT)	16
POWER LEGGING	16
FLAMINGO ROMPER SHORT	17
PRO SKORT (BAHAMA PRINT)	18
FLIRTY SKORT (LUSH PRINT)	18
BAHAMA DRESS	19
PIXIE HAT (BAHAMA PRINT)	19

### ESSENTIALS

LEGACY SL POLO	21
LEGACY SS POLO	21
JOURNEY SLEEVELESS POLO	22
JOURNEY SHORT SLEEVE POLO	22
ZONE SLEEVELESS POLO	23
ASPIRATION LONG SLEEVE (SOLID)	23
JAZZY JACKET	24
ZIPPY VEST	24
BEYOND JACKET	25
POWER LEGGING	26
PRO SKORT	27
FLIRTY SKORT	27
ACE SKORT	28
ACE SHORT	28
ACE CAPRI	28

### HEADWEAR

PIXIE HAT	29
BLING VISOR	29
CLUB VISOR	30
LUX VISOR	30
LUSH VISOR	30

### GLOVE COLLECTION

NANCY LOPEZ PRINTED GLOVES	31
----------------------------	----

### ACCESSORY COLLECTION

INSULATED TUMBLER	32
REFLECTED WAIST PACK	32

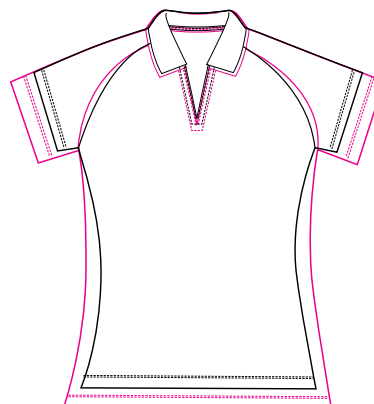
	X-SMALL		SMALL		MEDIUM		LARGE		X-LARGE	
LADIES TOPS	2	4	6	8	10	12	14	16	18	20
BUST	32	33	34	35	36	37.5	39	40.5	42.5	44.5
WAIST	25	26	27	29	30	32	33	35.5	36.5	39
HIP	36	37	38	39	40	41	42	44	46	48

	X-SMALL		SMALL		MEDIUM		LARGE		X-LARGE		XX-LARGE		3XL	
LADIES BOTTOMS	2	4	6	8	10	12	14	16	18	20	22		24	45
WAIST	25	26	27	29	30	32	33	35.5	36.5	39	41	43	44	45
HIGH HIP	33	34	35	36	37	38	39	41	42	44	47	49	49.5	51
HIP	36	37	38	39	40	41	4	44	46	48	50	52	53	54

LADIES PLUS TOPS	1X		2X		3X	
BUST	44	46	48	50	52	54
WAIST	36.5	39	40	42	44	46
HIP	46	48	50	52	54	56

LADIES PLUS BOTTOMS	18	20	22
WAIST	36.5	39	42
HIGH HIP	42	44	47
HIP	46	48	51

STANDARD XL - PLUS 1X  
FIT COMPARISON



THE NECK MEASUREMENT IS TAKEN AROUND THE BASE OF THE NECK.  
THE CHEST/BUST MEASUREMENT IS TAKEN 1" UNDER THE ARMS,  
AROUND THE FULLEST PART OF THE CHEST/BUST.

THE WAIST MEASUREMENT IS TAKEN AT THE NATURAL WAISTLINE,  
KEEPING THE MEASURING TAPE A LITTLE LOOSE FOR COMFORT

THE HIP MEASUREMENT IS TAKEN AROUND THE FULLEST PART OF THE  
HIPS, 8" DOWN FROM THE NATURAL WAISTLINE

THE SLEEVE MEASUREMENT IS TAKEN FROM THE CENTER OF THE  
BACK NECK, AROUND BENT ELBOW TO THE WRIST

\*FOR BEST RESULTS, TAKE MEASUREMENTS OVER YOUR UNDER  
GARMENTS. ALWAYS HOLD THE TAPE COMFORTABLY LOOSE.



Standard Lopez Fit



Lopez Plus Fit



Lopez



LPGA.

PROUD SPONSOR

**SPORT  FITNESS**

ACI BRANDS INC.

**ACI BRANDS INC.**

2616 Sheridan Garden Dr, Oakville, ON L6J 7Z2

Tel: 905-829-1566 Fax: 905-829-1766

Email: [Golf@Acibrands.com](mailto:Golf@Acibrands.com)

**[www.acibrands.com](http://www.acibrands.com)**