



# LOPEZ

*Defining the Women's Game.™*

**NANCY LOPEZ GOLF APPAREL  
2022 COLLECTIONS**





## **NANCY LOPEZ**

Nancy Lopez is one of the most famous and recognizable women in golf. Exploding onto the LPGA Tour in 1977, the women's game has benefited immensely from Nancy's superstar performance and personality.

Today, Nancy Lopez is revered for the excellence of her performance inside the tournament ropes. At the same time, she is adored for her natural ability to reach out and touch the hearts of her fans in a real and effortless manner. The essence of Nancy Lopez goes beyond being a world-class athlete; she's a dedicated wife, a mother of three daughters and a person with true heart and soul. Nancy Lopez has created an indelible mark in the history books, as well as in the hearts of those who follow her.

## **NANCY LOPEZ GOLF APPAREL**

Nancy Lopez Golf is pleased to offer an exciting assortment of ladies' golf apparel designed to fit and flatter women of all shapes and sizes.

## **PLUS SIZE COLLECTION**

Nancy Lopez Golf offers plus sizes 1X, 2X & 3X in all styles. You won't find this much plus size style, comfort and variety anywhere else! Visit our website to view the entire Lopez Plus Collection.



## **TABLE OF CONTENTS:**

|                               |  |
|-------------------------------|--|
| <b>SWEET TART COLLECTION</b>  |  |
| <b>NEW AGE COLLECTION</b>     |  |
| <b>ESSENTIALS COLLECTION</b>  |  |
| <b>HEADWEAR COLLECTION</b>    |  |
| <b>GLOVES COLLECTION</b>      |  |
| <b>ACCESSORIES COLLECTION</b> |  |

|                     |
|---------------------|
| <b>PAGE 3 - 6</b>   |
| <b>PAGE 7 - 9</b>   |
| <b>PAGE 10 - 17</b> |
| <b>PAGE 18 - 19</b> |
| <b>PAGE 20</b>      |
| <b>PAGE 21</b>      |



**TART SLEEVELESS POLO | L461101**

90% polyester / 10% spandex printed jersey sleeveless polo with Delux Dri™ moisture wicking technology. Mandarin collar, zip placket with metallic jewel zipper pull and contrast insets & trim. Lopez Flame icon at right hip.

S-XL, LOPEZ PLUS: 1X, 2X, 3X.



201 Black  
Multi



230 White  
Multi



**KISS SLEEVELESS POLO | L461102**

90% polyester / 10% spandex jersey sleeveless polo with Delux Dri™ moisture wicking technology. Convertible collar, zip placket with cap sleeve, jersey & jacquard mesh colourblock contrast trim & piping details. Lopez Flame icon at right hip.

S-XL, LOPEZ PLUS: 1X, 2X, 3X.



226 White/Black  
Multi



333 White/Cherry  
Multi



321 Black/Lemon  
Multi



**SPLENDID SLEEVELESS POLO | L461103**

90% polyester / 10% spandex jersey sleeveless polo with Delux Dri™ moisture wicking technology. Contrast printed self-collar and sleeve cuff and 5-snap contrast printed placket and mesh back panel. Lopez Flame icon at right hip.

S-XL, LOPEZ PLUS: 1X, 2X, 3X.



201 Black  
Multi



230 White  
Multi





**SPRITE SHORT SLEEVE POLO | L461201**

92% polyester / 8% spandex printed jersey short sleeve polo with Delux Dri™ moisture wicking technology. Solid contrast mandarin collar and sleeve trim, open y-neck single snap placket. Lopez Flame icon at right hip.

S-XL, LOPEZ PLUS: 1X, 2X, 3X.



201 Black  
Multi



230 White  
Multi



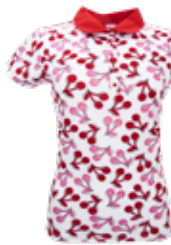
**CHERRY SHORT SLEEVE POLO | L461202**

92% polyester / 8% spandex printed jersey short sleeve polo with Delux Dri™ moisture wicking technology. Solid contrast self collar with 5-snap placket. Lopez Flame icon at right hip.

S-XL, LOPEZ PLUS: 1X, 2X, 3X.



201 Black  
Multi



334 Cherry  
Multi



332 Lemon  
Multi



**ZING SHORT SLEEVE POLO | L461203**

92% polyester / 8% spandex printed jersey short sleeve polo with Delux Dri™ moisture wicking technology. Mock collar and zip placket with metallic jewel zipper pull. Lopez Flame icon at right hip.

S-XL, LOPEZ PLUS: 1X, 2X, 3X.



334 Cherry  
Multi



332 Lemon  
Multi

**UPF  
50+**



**BALANCE LONG SLEEVE | L461301**

90% polyester / 10% spandex printed jersey long sleeve polo with Delux Dri™ moisture wicking technology and UPF 50+ sun protection. Self collar with zip placket, solid jersey under collar and mesh insets under sleeves. Lopez Flame icon at right hip.

S-XL, LOPEZ PLUS: 1X, 2X, 3X.



201 Black  
Multi



230 White  
Multi

**UPF  
50+**



**ASPIRATION LONG SLEEVE (PRINTS) | L461302**

90% polyester / 10% spandex printed jersey long sleeve top with Delux Dri™ moisture wicking technology and UPF 50+ sun protection. Crew neck and solid mesh insets under sleeve. Lopez Flame icon at right hip.

S-XL, LOPEZ PLUS: 1X, 2X, 3X.



185 Black / White  
(Juicy Print)



333 White / Cherry  
Multi (Click Print)



**TART DRESS | L461902**

90% polyester / 10% spandex printed jersey sleeveless golf dress with Delux Dri™ moisture wicking technology. Mandarin collar with open Y-neck placket and metallic jewel zipper pull. Contrast insets and side hand pockets. Lopez branding at right shoulder.

S-3XL



201 Black  
Multi



230 White  
Multi



**PRO SKORT (SPRITE PRINT) | L461901**

88% polyester / 12% spandex printed jersey 18" pull-on skort with Delux Dri™ moisture wicking technology. Side hip pockets and back slit pockets. Lightweight knit undershorts. Lopez Flame icon above back pocket.

S-3XL



Side View



Back View



201 Black  
Multi



230 White  
Multi



**POWER LEGGING (SPRITE PRINT) | L461904**

84% polyester / 16% spandex jersey pull-on leggings with Delux Dri™ moisture wicking technology. 26" inseam, extra-wide waistband and contrast printed inset at side leg and pockets. Lopez Flame icon at back waistband.

S-3XL



201 Black  
Multi



Side View



Back View





**RHYTHM SLEEVELESS POLO | L462101**

90% polyester / 10% spandex printed jersey sleeveless polo with Delux Dri™ moisture wicking technology. Convertible mock collar, zip placket with metallic jewel zipper pull. Lopez Flame icon at right hip.

S-XL, LOPEZ PLUS: 1X, 2X, 3X.



201 Black  
Multi



335 Iris  
Multi



038 Navy  
Multi



**PEACE SLEEVELESS POLO | L462102**

90% polyester / 10% spandex printed mesh jersey sleeveless polo with Delux Dri™ moisture wicking technology. Self collar and 5-snap placket with mesh printed chest inset and back panel. Lopez Flame icon at right hip.

S-XL, LOPEZ PLUS: 1X, 2X, 3X.



Back View 201 Black  
Multi



Back View 335 Iris  
Multi



Back View 038 Navy  
Multi



**STAR SLEEVELESS POLO | L462103**

90% polyester / 10% spandex jersey cap sleeve polo with Delux Dri™ moisture wicking technology. Mandarin collar and open V placket with contrast piping and engineered print detail. Lopez Flame icon at right hip.

S-XL, LOPEZ PLUS: 1X, 2X, 3X.



Back View



038 Navy  
Multi



201 Black  
Multi



335 Iris  
Multi



**GROOVY SHORT SLEEVE POLO | L462201**

90% polyester / 10% spandex printed jersey short sleeve polo with Delux Dri™ moisture wicking technology. Self collar with zip placket, piping detail and metallic jewel zipper pull. Lopez Flame icon at right hip.

S-XL, LOPEZ PLUS: 1X, 2X, 3X.



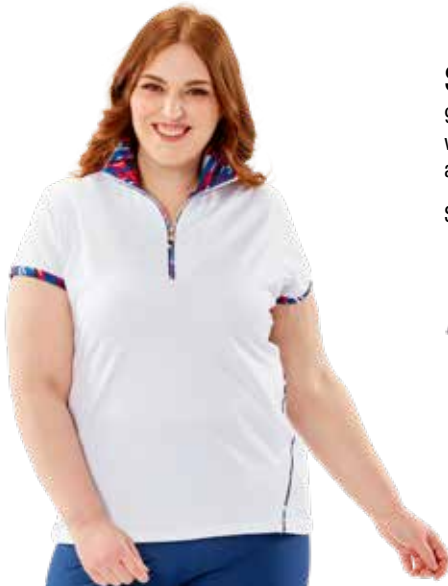
201 Black  
Multi



335 Iris  
Multi



038 Navy  
Multi



**SAMBA SHORT SLEEVE POLO | L462202**

90% polyester / 10% spandex printed and solid jersey short sleeve polo with Delux Dri™ moisture wicking technology. Self-collar with printed zip placket and sleeve cuffs and collar with piping details and metallic jewel zipper pull. Lopez Flame icon at right hip.

S-XL, LOPEZ PLUS: 1X, 2X, 3X.



Back View



335 Iris  
Multi



201 Black  
Multi



038 Navy  
Multi



**RUSH SHORT SLEEVE POLO | L462203**

90% polyester / 10% spandex printed jersey short sleeve polo with Delux Dri™ moisture wicking technology. Mock collar and zip placket with metallic jewel zipper pull. Lopez Flame icon at right hip.

S-XL, LOPEZ PLUS: 1X, 2X, 3X.



201 Black  
Multi



335 Iris  
Multi



038 Navy  
Multi





**ASPIRATION LONG SLEEVE (PRINTS) | L462302**

90% polyester / 10% spandex printed jersey long sleeve top with Delux Dri™ moisture wicking technology and UPF 50+ sun protection. Crew neck and solid mesh insets under sleeve. Lopez Flame icon at right hip.

S-XL, LOPEZ PLUS: 1X, 2X, 3X.



201 Black Multi  
(Dizzy Print)



038 Navy Multi  
(Dizzy Print)



**PRO SKORT (RUSH PRINT) | L462901**

88% polyester / 12% spandex printed jersey 18" pull-on skort with Delux Dri™ moisture wicking technology. Side hip pockets and back slit pockets. Lightweight knit undershort. Lopez Flame icon above back pocket.

S-3XL



Side View



Back View



201 Black  
Multi (Rush Print)



038 Navy  
Multi (Rush Print)



**LEGACY SLEEVELESS POLO | L429101**

100% polyester micro flat knit pique sleeveless polo with Delux Dri™ moisture wicking technology. Self-collar with open v-neck. Lopez flame icon embroidered at right hip.

S-XL, LOPEZ PLUS: 1X, 2X, 3X.



001 White    010 Black    305 Iris    310 Cherry    005 Navy



**LEGACY SHORT SLEEVE POLO | L429201**

100% polyester micro flat knit pique short sleeve polo with Delux Dri™ moisture wicking technology. Self-collar with 4-button placket. Lopez Flame icon at right hip.

S-XL, LOPEZ PLUS: 1X, 2X, 3X.



001 White    010 Black    310 Cherry    305 Iris    308 Teal    005 Navy



**JOURNEY SLEEVELESS POLO | L459101**

92% polyester / 8% spandex jacquard knit sleeveless polo with Delux Dri™ moisture wicking technology. Self-collar with open v-neck and 2-button placket. Lopez Flame icon embroidered at right hip.

S-XL, LOPEZ PLUS: 1X, 2X, 3X.



001 White    010 Black    310 Cherry    016 Lemon    309 Fern    305 Iris



**JOURNEY SHORT SLEEVE POLO | L459201**

92% polyester / 8% spandex jacquard short sleeve polo with Delux Dri™ moisture wicking technology. Self-collar with 4-button placket. Lopez Flame icon embroidered at right hip.

S-XL, LOPEZ PLUS: 1X, 2X, 3X.



001 White    010 Black    305 Iris    308 Teal    310 Cherry    016 Lemon    309 Fern



**JOURNEY 3/4 SLEEVE POLO | L459301**

100% polyester micro flat knit pique short sleeve polo with Delux Dri™ moisture wicking technology. Self-collar with 4-button placket. Lopez Flame icon at right hip.

S-XL, LOPEZ PLUS: 1X, 2X, 3X.



001 White    010 Black    305 Iris    310 Cherry    308 Teal



**ZONE SLEEVELESS POLO | L459102**

100% polyester jacquard sleeveless polo with Delux Dri™ moisture wicking technology. Convertible mock collar with zip placket and jewel zipper pull. Contrast mesh insets & contrast coverstitch detail. Lopez Flame icon embroidered at collar

S-XL, LOPEZ PLUS: 1X, 2X, 3X.



Back View    185 Black/White    311 Cherry/White    312 Iris/White    313 Teal/White





**ZONE SHORT SLEEVE POLO | L459202**

100% polyester jacquard short sleeve polo with Delux Dri™ moisture wicking technology. Convertible mock collar with zip placket and jewel zipper pull. Contrast mesh insets & contrast coverstitch detail. Lopez Flame icon embroidered at collar.

S-XL, LOPEZ PLUS: 1X, 2X, 3X.



Back View

311 Cherry/  
White

185 Black/  
White

312 Iris/  
White

313 Teal/  
White



**ASPIRATION LONG SLEEVE TEE (SOLID) | L461302**

90% polyester / 10% spandex solid jersey long sleeve top with Delux Dri™ moisture wicking technology and UPF 50+ sun protection. Crew neck and solid mesh insets under sleeve. Lopez Flame icon at right hip.

S-XL, LOPEZ PLUS: 1X, 2X, 3X.



001 White

010 Black



**JAZZY JACKET | L426301**

88% polyester / 12% spandex jersey full zip jacket with Delux Dri™ moisture wicking technology. Cozy brushed back fabric, mock collar & side hand pockets. Rounded hem and cuff detail with thumbhole for added warmth. Lopez branding at right hip.

S-XL, LOPEZ PLUS: 1X, 2X, 3X.



01 White

10 Black

305 Iris

310 Cherry

308 Teal

094 Black  
Heather

185 Black/  
White (Stripe)



**ZIPPY VEST | L461402**

100% polyester printed woven full zip wind resistant vest. Contrast jersey lining and stitch details with front hand pockets and rounded hem. Lopez branding at right hip.

S-XL, LOPEZ PLUS: 1X, 2X, 3X.



Back View



230 White  
Multi



201 Black  
Multi



**PIVOT JACKET | L430301**

100% polyester woven striped, long sleeve, wind & water resistant jacket. Full zip placket with contrast jersey knit side insets, front hand pockets and rounded drop hem. Fully packable into back zip pocket. Jewel detail on metallic zipper pulls. Lopez Flame icon at right hip.

S-XL, LOPEZ PLUS: 1X, 2X, 3X.



Back View



Packable View



230 White  
Multi



**BEYOND JACKET | L460401**

100% polyester woven long sleeve, water resistant jacket. Full zip placket with jewel detail on zipper pulls and inside drawcord at waist. Front hand zippered pockets and rounded drop hem. Hidden collar zip pocket with hood. Lopez Flame icon at right hem.

S-XL, LOPEZ PLUS: 1X, 2X, 3X.



Back View



Back View



010 Black



**POWER LEGGING (STRIPE) | L460904**

84% polyester / 16% spandex jersey pull-on legging with Delux Dri™ moisture wicking technology. 26" inseam, extra-wide waistband and contrast printed inset at side leg and pockets. Lopez Flame icon at back waistband.

S-3XL



Back View



Side View



185 Black/  
White



**POWER LEGGING | L463904**

84% polyester / 16% spandex jersey pull-on legging with Delux Dri™ moisture wicking technology. 26" inseam, extra-wide waistband and side pockets. Lopez Flame icon at back waistband.

S-3XL



Back View



Side View



010 Black



094 Black  
Heather



**KICK LEGGING | L430902**

88% polyester / 12% spandex jersey legging with Delux Dri™ moisture wicking technology. Pull on legging with 26.25" inseam and contrast stitch details.

Lopez Flame icon at back waistband.

S-3XL



Back View



010 Black



094 Black  
Heather





**KICK SHORTIE | L460902**

92% polyester / 8% spandex jersey pull-on bike short with Delux Dri™ moisture wicking technology. 5.50" inseam (5.75" for sizes XL-3XL) and extra-wide waistband. Lightweight design, to be worn under any golf skirt or dress. Lopez Flame Icon at back waistband.

S-3XL



Back View



Packaged



010 Black



**PRO SKORT | L459901**

88% polyester / 12% spandex jersey 18" pull-on skort with Delux Dri™ moisture wicking technology and coverstitch detail. Side hand pockets and back slit pockets. Lightweight knit undershort. Lopez Flame icon above back pocket.

S-3XL



Side View



305 Iris



310 Cherry



308 Teal



010 Black



001 White



094 Black  
Heather



**PRO SKORT (STRIPE) | L459901**

88% polyester / 12% spandex jersey 18" pull-on skort with Delux Dri™ moisture wicking technology and coverstitch detail. Side hand pockets and back slit pockets. Lightweight knit undershort. Lopez Flame icon above back pocket.

S-3XL



Side View



Back View



185 Black/  
White



**FLIRTY SKORT | L461903**

88% polyester / 12% spandex jersey with 85% polyester / 15% spandex woven pleated flounce, 18" pull-on skort with Delux Dri™ moisture wicking technology. Side hip pockets and back pockets and lightweight knit undershort. Lopez Flame icon above back pocket.

S-3XL



Back View      Side View      010 Black      001 White



**ACE SKORT | L463901**

85% polyester / 15% spandex woven pull-on skort with Delux Dri™ moisture wicking technology. Front hand pockets and back slit pockets. Lightweight knit undershort. Lopez Flame icon above back pocket.

S-3XL



Back View      Side View      010 Black      001 White      005 Navy      020 Silver



**ACE SKORT (ZIPPY PRINT) | L463901**

85% polyester / 15% spandex woven pull-on skort with Delux Dri™ moisture wicking technology. Front hand pockets and back slit pockets. Lightweight knit undershort. Lopez Flame icon above back pocket.

S-3XL



Back View      Side View      201 Black Multi



**ACE SHORT | L463902**

85% polyester / 15% spandex woven pull-on short with Delux Dri™ moisture wicking technology. Front hand pockets and back slit pockets. Lopez Flame icon above back pocket.

S-3XL



Back View



Side View



010 Black



005 Navy



020 Silver



**ACE SHORT (ZIPPY PRINT) | L463902**

85% polyester / 15% spandex woven pull-on short with Delux Dri™ moisture wicking technology. Front hand pockets and back slit pockets. Lopez Flame icon above back pocket.

S-3XL



Back View



Side View



201 Black  
Multi



**ACE CAPRI | L463903**

85% polyester / 15% spandex woven pull-on capri with Delux Dri™ moisture wicking technology. Front hand pockets and back slit pockets. Lopez Flame icon above back pocket.

S-3XL



Back View



Side View



010 Black



005 Navy



020 Silver



**CLUB REVERSE CLIP VISOR | L427801**

90% polyester / 10% spandex jersey fully reversible visor with metallic stud detail. Contrast color on reverse side.  
Embroidered Lopez & Flame branding. ONE SIZE.



185 Black/White



768 White/Silver

**SPRITE REVERSE CLIP VISOR | L461801**

90% polyester / 10% spandex jersey fully reversible clip visor. Contrast print on reverse side.  
Embroidered Lopez & Flame branding. ONE SIZE.



201 Black Multi

**CHERRY REVERSE CLIP VISOR | L461802**

90% polyester / 10% spandex jersey fully reversible clip visor. Contrast print on reverse side.  
Embroidered Lopez & Flame branding. ONE SIZE.



334 Cherry Multi

**RUSH REVERSE CLIP VISOR | L462801**

90% polyester / 10% spandex jersey fully reversible clip visor. Contrast print on reverse side.  
Embroidered Lopez & Flame branding. ONE SIZE.



201 Black Multi



230 White Multi

**GLOBAL HAT | L427804**

95% polyester / 5% spandex woven cap with lasercut flame detail on side panels.  
Snag free Velcro back closure with Lopez Flame icon. Lopez branding on front bill. ONE SIZE.



10 Black



20 Silver



01 White

**PIXIE HAT | L463801**

95% polyester / 5% spandex woven large bill cap with velcro back closure with Lopez Flame icon.  
Lopez branding on front bill. ONE SIZE.



010 Black



005 Navy



201 Black Multi  
(Zippy Print)



230 White Multi  
(Zippy Print)



**FULL FINGER GLOVE NLMF20 / NLMF22**

53% Printed Spandex / 43% Cabretta Leather / 4% Synthetic printed full finger golf glove. Soft, premium cabretta leather palm combined with printed lycra. UPF50+ sun protection. Velcro wrist closure with Lopez branding.

S-XL



Gli (Glimmer)



Bea (Beauty)



Par (Paradise)



Wil (Wildcat)



Spr (Sprite)



Che (Cherry)



Cli (Click)



Gro (Groovy)



Jui (Juicy Plaid)



Rhy (Rhythm)



Rus (Rush)



Diz (Dizzy)



**HALF FINGER GLOVE NLMH20 / NLMH22**

48% Printed Spandex / 47% Cabretta Leather / 5% Synthetic printed half finger golf glove. Soft, premium cabretta leather palm combined with printed lycra. UPF50+ sun protection. Velcro wrist closure with Lopez branding.

S-XL



Gli (Glimmer)



Bea (Beauty)



Par (Paradise)



Wil (Wildcat)



Spr (Sprite)



Che (Cherry)



Cli (Click)



Gro (Groovy)



Jui (Juicy Plaid)



Rhy (Rhythm)



Rus (Rush)



Diz (Dizzy)





### 12 OZ INSULATED TUMBLER | NLTMBWH

Nancy Lopez's Insulated Tumbler is perfectly suited for the outdoors and keeps your drink at its ideal temperature. Made with lightweight, lead-free stainless steel, the 12-ounce, double-walled and vacuum insulated tumbler features a thermal lining keeps hot liquids hot for 3 hours and cold liquids cold for 9 hours.



### REFLECTIVE WAIST PACK | NL9830BK

Keep your personal belongings close at hand and easily accessible. The Lopez waist pack features a large, multi-layered capacity, perfect for storing phones, keys, cards and any other quick-grab items. The adjustable strap fits up to a 47" waist. The waist pack's waterproof exterior keeps your belongings dry and protected. Its reflective strip provides maximum visibility, even in low light situations.



# APPAREL SIZE CHART

## INDEX

### SWEET TART COLLECTION

|                              |    |
|------------------------------|----|
| TART POLO                    | 03 |
| KISS POLO                    | 03 |
| SPLENDID POLO                | 03 |
| SPRITE POLO                  | 04 |
| CHERRY POLO                  | 04 |
| ZING POLO                    | 04 |
| BALANCE LONG SLEEVE POLO     | 05 |
| ASPIRATION LONG SLEEVE       | 05 |
| TART DRESS                   | 05 |
| PRO SKORT (SPRITE PRINT)     | 06 |
| POWER LEGGING (SPRITE PRINT) | 06 |

### NEW AGE COLLECTION

|                                 |    |
|---------------------------------|----|
| RHYTHM POLO                     | 07 |
| PEACE POLO                      | 07 |
| STAR POLO                       | 07 |
| GROOVY POLO                     | 08 |
| SAMBA POLO                      | 08 |
| RUSH POLO                       | 08 |
| ASPIRATION LONG SLEEVE (PRINTS) | 09 |
| PRO SKORT (RUSH PRINT)          | 09 |

### ESSENTIALS

|                           |    |
|---------------------------|----|
| LEGACY SL POLO            | 10 |
| LEGACY SS POLO            | 10 |
| JOURNEY SLEEVELESS POLO   | 10 |
| JOURNEY SHORT SLEEVE POLO | 11 |
| JOURNEY ¾ SLEEVE POLO     | 11 |
| ZONE SLEEVELESS POLO      | 11 |

|                                |    |
|--------------------------------|----|
| ZONE SHORT SLEEVE POLO         | 12 |
| ASPIRATION LONG SLEEVE (SOLID) | 12 |
| JAZZY JACKET                   | 12 |
| ZIPPY VEST                     | 13 |
| PIVOT JACKET                   | 13 |
| BEYOND JACKET                  | 13 |
| POWER LEGGING                  | 14 |
| KICK LEGGING                   | 14 |
| KICK SHORTIE                   | 15 |
| PRO SKORT                      | 15 |
| FLIRTY SKORT                   | 16 |
| ACE SKORT                      | 16 |
| ACE SHORT                      | 17 |
| ACE CAPRI                      | 17 |

### HEADWEAR

|                      |    |
|----------------------|----|
| CLUB REVERSE VISOR   | 18 |
| SPRITE REVERSE VISOR | 18 |
| CHERRY REVERSE VISOR | 18 |
| RUSH REVERSE VISOR   | 19 |
| GLOBAL HAT           | 19 |
| PIXIE HAT            | 19 |

### GLOVE COLLECTION

|                            |    |
|----------------------------|----|
| NANCY LOPEZ PRINTED GLOVES | 20 |
|----------------------------|----|

### ACCESSORY COLLECTION

|                       |    |
|-----------------------|----|
| INSULATED TUMBLER     | 21 |
| REFLECTIVE WAIST PACK | 21 |

|                    | X-SMALL  |          | SMALL    |          | MEDIUM    |           | LARGE     |           | X-LARGE   |           |
|--------------------|----------|----------|----------|----------|-----------|-----------|-----------|-----------|-----------|-----------|
| <b>LADIES TOPS</b> | <b>2</b> | <b>4</b> | <b>6</b> | <b>8</b> | <b>10</b> | <b>12</b> | <b>14</b> | <b>16</b> | <b>18</b> | <b>20</b> |
| <b>BUST</b>        | 32       | 33       | 34       | 35       | 36        | 37.5      | 39        | 40.5      | 42.5      | 44.5      |
| <b>WAIST</b>       | 25       | 26       | 27       | 29       | 30        | 32        | 33        | 35.5      | 36.5      | 39        |
| <b>HIP</b>         | 36       | 37       | 38       | 39       | 40        | 41        | 42        | 44        | 46        | 48        |

|                       | X-SMALL  |          | SMALL    |          | MEDIUM    |           | LARGE     |           | X-LARGE   |           | XX-LARGE  |           | 3XL       |           |
|-----------------------|----------|----------|----------|----------|-----------|-----------|-----------|-----------|-----------|-----------|-----------|-----------|-----------|-----------|
| <b>LADIES BOTTOMS</b> | <b>2</b> | <b>4</b> | <b>6</b> | <b>8</b> | <b>10</b> | <b>12</b> | <b>14</b> | <b>16</b> | <b>18</b> | <b>20</b> | <b>22</b> | <b>24</b> | <b>24</b> | <b>45</b> |
| <b>WAIST</b>          | 25       | 26       | 27       | 29       | 30        | 32        | 33        | 35.5      | 36.5      | 39        | 41        | 43        | 44        | 45        |
| <b>HIGH HIP</b>       | 33       | 34       | 35       | 36       | 37        | 38        | 39        | 41        | 42        | 44        | 47        | 49        | 49.5      | 51        |
| <b>HIP</b>            | 36       | 37       | 38       | 39       | 40        | 41        | 4         | 44        | 46        | 48        | 50        | 52        | 53        | 54        |

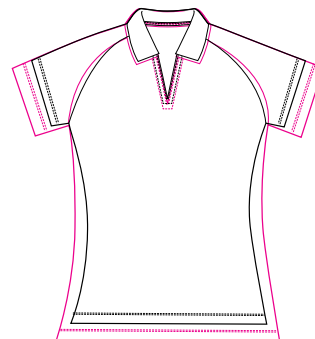
  

|                         | 1X   |    | 2X |    | 3X |    |
|-------------------------|------|----|----|----|----|----|
| <b>LADIES PLUS TOPS</b> |      |    |    |    |    |    |
| <b>BUST</b>             | 44   | 46 | 48 | 50 | 52 | 54 |
| <b>WAIST</b>            | 36.5 | 39 | 40 | 42 | 44 | 46 |
| <b>HIP</b>              | 46   | 48 | 50 | 52 | 54 | 56 |

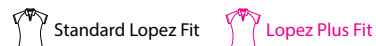
|                            | 18   | 20 | 22 |
|----------------------------|------|----|----|
| <b>LADIES PLUS BOTTOMS</b> |      |    |    |
| <b>WAIST</b>               | 36.5 | 39 | 42 |
| <b>HIGH HIP</b>            | 42   | 44 | 47 |
| <b>HIP</b>                 | 46   | 48 | 51 |

STANDARD XL - PLUS 1X  
FIT COMPARISON



THE NECK MEASUREMENT IS TAKEN AROUND THE BASE OF THE NECK.  
 THE CHEST/BUST MEASUREMENT IS TAKEN 1" UNDER THE ARMS, AROUND THE FULLEST PART OF THE CHEST/BUST.  
 THE WAIST MEASUREMENT IS TAKEN AT THE NATURAL WAISTLINE, KEEPING THE MEASURING TAPE A LITTLE LOOSE FOR COMFORT  
 THE HIP MEASUREMENT IS TAKEN AROUND THE FULLEST PART OF THE HIPS, 8" DOWN FROM THE NATURAL WAISTLINE  
 THE SLEEVE MEASUREMENT IS TAKEN FROM THE CENTER OF THE BACK NECK, AROUND BENT ELBOW TO THE WRIST

\*FOR BEST RESULTS, TAKE MEASUREMENTS OVER YOUR UNDER GARMENTS. ALWAYS HOLD THE TAPE COMFORTABLY LOOSE.









DIAMOND SPONSOR

# SPORT FITNESS

ACI BRANDS INC.

## **ACI BRANDS INC.**

2616 Sheridan Garden Dr, Oakville, ON L6J 7Z2

Tel: 905-829-1566 Fax: 905-829-1766

Email: [Golf@Acibrands.com](mailto:Golf@Acibrands.com)

**[www.acibrands.com](http://www.acibrands.com)**

SS06547-0721

