



ANTIGUA
A

APPAREL FOR **YOUR** GAME

ANTIGUA APPAREL FALL 2021 THROUGH SPRING 2022

34P Desert
Pink Multi



25P Desert
Pink



Cheerful S/L A104539 NEW

95% polyester/5% spandex **Desert Dry™** moisture wicking all over sublimation printed jersey knit sleeveless polo. Self fabric collar zip placket. Antigua "A" logo at bottom hem. **S-XXL**

Marvelous S/L A104422 NEW

92% polyester/8% spandex **Desert Dry™** moisture wicking textured geometric jacquard knit solid sleeveless polo with button placket, dyed to match solid flat knit collar. Bra strap holder at shoulder. "A" logo at bottom hem. **S-XXL**

230 White Multi

65K Moody Multi



001
White

26P
Brook

010
Black

19J
Moody



19J Moody



59P Moody/
Rumba Multi



Marvelous A104421 **NEW**

92% polyester/8% spandex **Desert Dry™** moisture wicking geometric jacquard knit solid short sleeve polo with button placket, dyed to match solid flat knit collar. This style features a longer sleeve length at 14.5" from center back. "A" logo at wearer's right sleeve. **S-XXL**

Eagle A104540 **NEW**

95% polyester/5% spandex **Desert Dry™** moisture wicking all over sublimation printed jersey knit short sleeve polo. Self fabric collar & button placket. Open cuff with Antigua "A" logo at right sleeve. **S-XXL**

001
White

26P
Brook

010
Black

25P
Desert Pink



34P Desert Pink Multi

226 White/ Black Multi



44P White/Desert
Pink Multi



23P Rumba Heather/
Desert Pink



Insight A104546 **NEW**

95% polyester/5% spandex **Desert Dry™** jacquard texture knit with all-over sublimation print sleeveless polo. Self fabric collar and zip placket. Antigua "A" logo at bottom hem. **S-XXL**

S/L Ability A104423 **NEW**

100% polyester **Desert Dry™ Xtra-Lite D²XL** moisture wicking heather mini stripe interlock knit sleeveless polo. Self fabric mock collar and zip placket. Side seam forward detail. Bra strap holder at shoulder. Antigua "A" logo at bottom hem. **S-XXL**

43P Brook Multi



24K Black Heather/Stingray

24P Moody Heather/Brook



43P Brook
Multi



44P White/Desert
Pink Multi



Birdie A104545 NEW

95% polyester/5% spandex **Desert Dry™** moisture wicking jacquard texture knit short sleeve printed polo. Self fabric collar and button placket. Raglan armhole. Antigua "A" logo at wearer's right sleeve. **S-XXL**



42P Moody Hthr/
Brook Multi

Select A104439 **NEW**

95% polyester/5% spandex **Desert Dry™** moisture wicking space dye heather front & back panel long sleeve pullover with heather rib sleeves and side insets. Self fabric stand-up collar and zipper placket. Antigua "A" logo at center back neck. **S-XXL**

41P Stingray Hthr/
Desert Pink Multi

830 Black
Heather Multi



010 Black



230 White Multi

Brava A104431 **NEW**

100% polyester **Desert Dry™** moisture wicking sweater weight heather jersey face with mesh back long sleeve shawl collar pullover with zipper placket, raglan armhole and on-seam zipper hand pockets. Antigua "A" logo at wearer's right sleeve end. **S-XXL**

361 Stingray
Heather

771 Moody
Heather



Agent Skort A104388 **NEW**

85% polyester/15% spandex **Desert Dry™** moisture wicking heavy jersey knit skort with ruffle hem. On seam zipper pockets. Self fabric waistband. 18.5" length from top side of waistband down to bottom hem on a size medium. **S-XXL**

34P Desert Pink Multi

59P Moody/Rumba Multi



74K Stingray/
Black



74K Stingray/
Black



Guide A104441 **NEW**

87% polyester/13% spandex **Desert Dry™** moisture wicking 2-color engineered dot pattern long sleeve jacket. Self fabric stand up collar and covered placket. On seam pockets. Antigua "A" logo at wearer's right bottom hem. **S-XXL**

Generation Bomber A104541 **NEW**

92% polyester/8% spandex interlock full zip bomber style jacket with self fabric collar, cut & sew cuff & bottom. On seam hip pockets. Contrast color wearer's right zipper chest pocket. Reflective "A" logo at wearer's right sleeve. **S-XXL**

222 White/
Black



35P Desert
Pink/Rumba



36P Brook/
Moody



35P Desert
Pink/Rumba



19J
Moody



51P Desert Pink
Heather/White



44P White/Desert
Pink Multi (Shown)

Veil A104070 **NEW**

90% polyester/10% spandex **Desert Dry™** moisture wicking jersey colorblocked long sleeve UPF protection 50+ tee with Mandarin collar & zipper placket. Antigua "A" logo at wearer's right sleeve. **S-XXL**

48P Brook Heather/Moody

49P Stingray Heather/Black



Agent Skort A104388 **NEW**

85% polyester/15% spandex **Desert Dry™** moisture wicking heavy jersey knit skort with ruffle hem. On seam zipper pockets. Self fabric waistband. 18.5" length from top side of waistband down to bottom hem on a size medium. **S-XXL**

26P Brook

43P Brook Multi



37P Brook
Heather



29P Rumba/
White



Metric A104446 NEW

96% polyester/4% spandex **Desert Dry™** moisture wicking heather mini-stripe jersey short sleeve polo with a self fabric collar & collar band. Open cuff and side slits at bottom hem. Antigua "A" logo at wearer's right sleeve. S-XXL

Nautical A104448 NEW

94% polyester/6% spandex **Desert Dry™ Xtra-Lite D²XL** moisture wicking solid, heather & white auto stripe jersey short sleeve polo. Self fabric collar & collar band. Open cuff. Side slits at bottom hem. Antigua "A" logo at wearer's right sleeve. S-XXL

38P Rumba
Heather

77J Moody
Heather

39P Cactus
Heather

094 Black
Heather



27P Moody/
White

28P Cactus/
White

185 Black/
White





67P Natural/
Cactus Multi

Axiom A104535 **NEW**

95% polyester/5% spandex **Desert Dry™** moisture wicking mesh back knit polo with all over sublimation print. Self fabric collar & collar band, open cuff, side slits at bottom hem. Antigua "A" logo at wearer's right sleeve. **S-XXL**

66P White/
Moody Multi



83K Stingray Multi



65P Natural/
Rumba Multi



25I Black/
Stingray



65K Moody
Multi



Labyrinth A104492 **NEW**

100% polyester **Desert Dry™ Xtra-Lite D²XL** moisture wicking 2-color geometric jacquard knit short sleeve polo. Self fabric collar & collar band open cuff. Side slits at bottom hem. Antigua "A" logo at wearer's right sleeve. S-3XL

224 White/
Silver

32P Desert
Pink/White

31P Brook/
White

94K Stingray/
Silver



Persist A104460 **NEW**

92% polyester/8% spandex **Desert Dry™ Xtra-Lite D²XL** moisture wicking drop needle knit 2-color mini stripe short sleeve polo. Button placket, self fabric spread collar & collar band. open cuff. Side slits. Antigua "A" logo at wearer's right sleeve end. S-3XL

52P Monarch/
White

53P Peridot/
White

83K Stingray
Multi



23R Brook
Heather Multi



61P Cactus
Multi



Valiant A104449 NEW

95% polyester/5% spandex **Desert Dry™ Xtra-Lite D²XL** moisture wicking heather & solid engineered yarn dye jersey stripe short sleeve polo. Open cuff. Self fabric collar & collar band. Side slits at bottom hem. Antigua "A" logo at wearer's right sleeve. **S-3XL**

Rogue A104542 NEW

92% polyester/8% spandex **Desert Dry™** moisture wicking color tonal jacquard camo pattern short sleeve polo with button placket, self fabric collar & open cuff. Side slits at bottom hem. "A" logo at wearer's right sleeve. **S-3XL**

25R Cactus
Heather Multi

042 Grey Heather
Multi

24R Stingray
Heather Multi

43P Brook Multi

65K Moody Multi

62P Medium Grey Multi

201 Black Multi





66P White/
Moody Multi

Theorem A104544 **NEW**

95% polyester/5% spandex **Desert Dry™** moisture wicking double knit jacquard short sleeve polo with sublimation print. Self fabric collar & collar band. Open cuffs, side slit detail & Antigua "A" logo at wearer's right sleeve. **S-3XL**

84K Medium Grey/White (Shown)

68P Monarch Multi

61P Cactus Multi

201 Black Multi





39P Cactus
Heather



65K Moody
Mult

Acclaim A104538 NEW

96% polyester/4% spandex **Desert Dry™** moisture wicking heather mini-stripe jersey long sleeve 1/4 zip pullover with a self fabric collar, open cuff and bottom hem. Antigua "A" logo at wearer's right sleeve. **S-XXL**

Equinox A104454 NEW

97% polyester/3% spandex **Desert Dry™** moisture wicking mini ottoman texture two tone long sleeve half zip pullover. Covered placket & tonal coverstitch detail at inset seams. Antigua "A" logo at wearer's right sleeve. **S-XXL**

37P Brook
Heather

77J Moody
Heather

094 Black
Heather



224 White/
Silver

201 Black
Multi



77J Moody
Heather



46P Rumba Stingray/
Monarch (S-XXL)



Sierra A104455 NEW

96% polyester/4% spandex **Desert Dry™** moisture wicking engineered pointelle jacquard pattern heather jersey long sleeve half zip pullover. Heathered insets at raglan armhole. Antigua "A" logo at wearer's right sleeve. S-XXL

39P Cactus
Heather

094 Black
Heather



Pace A104504 NEW

93% polyester/7% spandex **Desert Dry™** moisture wicking midweight jesej long sleeve pullover with yarn dye engineered chest stripe. Stand up collar & quarter zip placket. Antigua silver reflective "A" logo at right sleeve end. S-3XL

47P Brook/Silver/
Peridot (S-XXL)

45P Cactus/ Black/
Antique (S-XXL)

43N Black/Smoke/
Skyscraper

45N Navy/
Skyscraper/White





ANTIGUA.
A

Grayhawk
Golf Club

*344 Columbia Blue



*344 Columbia Blue



Inspire A101300

100% polyester **Desert Dry™** interlock diamond pattern embossed short sleeve polo with 3-button placket, self collar, side slits, and Antigua patch at right cuff. S-3XL

*Women's matchable style

Women's Inspire A101301

100% polyester **Desert Dry™** interlock diamond pattern embossed short sleeve polo with 3-button placket, self collar, side slits, and Antigua patch at right cuff. S-XXL

*Men's matchable style

*01 White *10 Black *32 Mango *76 Smoke
*05 Navy *22 Red *56 Dark Royal

*01 White *10 Black *32 Mango *76 Smoke
*05 Navy *22 Red *56 Dark Royal





*658 Navy Multi

*658 Navy Multi

Women's Balance A104273

95% polyester/5% spandex **Desert Dry™** moisture wicking yarn dye gingham pattern jacquard short sleeve polo with 4-button placket, self collar, princess seams and Antigua triangle patch at right sleeve. **S-XXL**

*Men's matchable style

Balance A104269

95% polyester/5% spandex **Desert Dry™** moisture wicking yarn dye gingham pattern jacquard short sleeve polo with 3-button placket, self collar, side slits and Antigua triangle patch at right sleeve. **S-3XL**

*Women's matchable style

*230 White Multi *210 Black Multi *660 Dark Royal Multi *777 Steel Multi *662 Dark Red Multi



*230 White Multi *210 Black Multi *660 Dark Royal Multi *777 Steel Multi *662 Dark Red Multi



*22 Dark Red



*22 Dark Red



Tribute A104197

100% polyester **Desert Dry™** moisture wicking interlock knit solid short sleeve polo with self-fabric collar, open cuff, narrow 3-button placket, and side slits. Antigua triangle patch at right sleeve. **S-3XL**

*Women's matchable style

Women's Tribute A104198

100% polyester **Desert Dry™** moisture wicking interlock knit solid short sleeve polo with self-fabric collar, 2-button "Y" placket, open cuff and princess seams. Antigua triangle patch at right sleeve. **S-XXL**

*Men's matchable style

*01 White *05 Navy *10 Black *56 Dark Royal *76 Smoke *344 Coolumbia Blue



*01 White *05 Navy *10 Black *56 Dark Royal *76 Smoke *344 Coolumbia Blue





*005 Navy



*010 Black

L/S Tribute A104331

100% polyester **Desert Dry™** moisture wicking interlock knit solid long sleeve polo with self-fabric collar, open cuff, narrow 3-button placket, and side slits. Antigua triangle patch at right cuff. **UPF 50+ sun protection. S-XXL**

*Women's matchable style

*001 White

*010 Black



Women's L/S Tribute A104354

100% polyester **Desert Dry™** moisture wicking interlock knit long sleeve polo with self-fabric collar and 5-button placket. Princess seam and shoulder forward detail. Antigua "A" logo at right sleeve. **UPF 50+ sun protection. S-XXL**

*Men's matchable style

*001 White

*005 Navy



*75F Cinder
Multi



*80G Medium Denim
Heather Multi



Women's Clover A104408

100% polyester **Desert Dry™** moisture wicking three color brushed face fleece knit full zip long sleeve jacket with contrast covered placket and top collar binding. Antigua triangle patch at right cuff. **S-XXL**

*Men's matchable style

Clover A104333

100% polyester **Desert Dry™** moisture wicking three color brushed face fleece knit 1/2 zip long sleeve pullover with contrast covered placket, top collar binding and back yoke. Antigua triangle patch at right cuff. **S-3XL**

*Women's matchable style

*80G Medium Denim
Heather Multi



*830 Black
Multi



*75F Cinder
Multi



*830 Black
Multi



010 Black



010 Black



Altitude A104340

100% polyester brushed back jersey knit full zip jacket with 100% nylon horizontally quilted front panel, raglan sleeves, stand up collar, and dyed to match zip hip pockets. Antigua "A" logo at right cuff. **S-3XL**

*Women's matchable style

*005 Navy



Women's Altitude A104345

100% polyester brushed back jersey knit full zip jacket with 100% nylon quilted front panel with angled design, raglan sleeves, stand-up collar, and dyed to match zip hip pockets. Antigua "A" logo at right cuff. **S-XXL**

*Men's matchable style

*005 Navy



Pinnacle A100636

100% polyester lightweight woven lightly structured, adjustable hook & loop back baseball hat. Contrast fabric underbill. **One size fits all**



01 White



344 Columbia Blue



05 Navy



32 Mango



22 Dark Red



14 Steel



76 Smoke



10 Black



56 Dark Royal

Encore A101052

64% polyester/30% viscose/6% spandex heather twill hat with structured front. One size adjustable hat with hook & loop back. **One size fits all**



01 White



05 Navy



56 Dark Royal



22 Dark Red



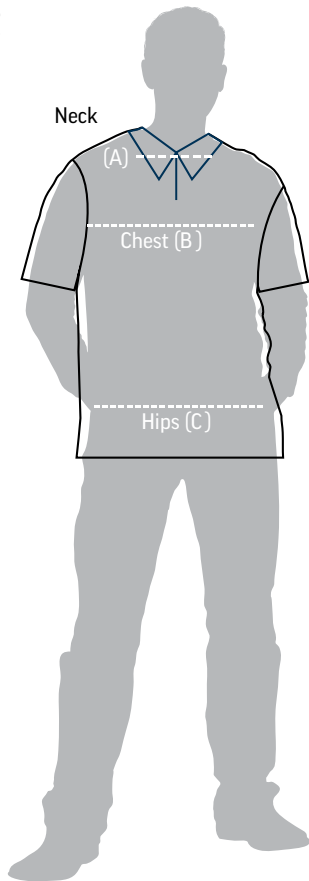
10 Black



13 Stone

Size Chart

Men



CLASSIC FIT (Tribute, Inspire, Venture, Salute, Balance)

Size		S	M	L	XL	2XL	3XL	4XL
Neck	A	16	17	18	19	20	21	22
Chest	B	20	21.5	23.5	25.5	28	30.5	33
Hips	C	19.5	21	23	25	27.5	30	32.5

PERFORMANCE FIT (Men's Fashion Collection, Pages 11-20)

Size		S	M	L	XL	2XL	3XL
Neck	A	16	17	18	19	20	21
Chest	B	19.5	21	23	25.5	28	30.5
Hips	C	18.5	20	22	24.5	27	29.5

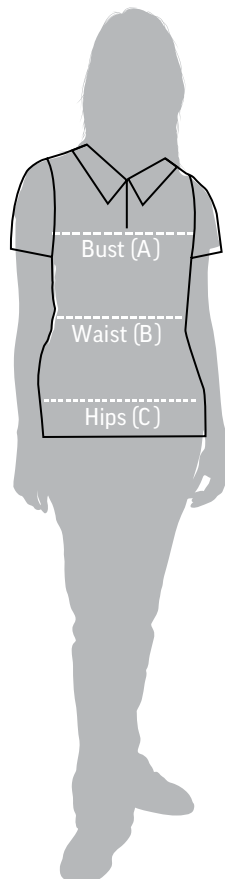
Neck (A): Measure around base of neck

Chest (B): Measure under arms around fullest part of chest

Hips (C): Measure around the fullest part of the body at the top of the leg

Size Chart

Women



CLASSIC FIT (Women's Tribute, Inspire, Venture, Salute, Balance)

Size		S	M	L	XL	2XL	3XL
Bust	A	18	19.5	21	22.5	24.5	26.5
Waist	B	16.5	18	19.5	21.5	23.5	25.5
Hips	C	19	20	22	24	26	28

PERFORMANCE FIT (Women's Fashion Collection, Pages 2-9)

Size		S	M	L	XL	2XL
Bust	A	18	19	20.5	22	24
Waist	B	16	17	18.5	20.5	22.5
Hips	C	19	20	21.5	23	25

Bust (A): Measure under arms around fullest part of chest

Waist (B): Measure around waistline, keeping tape comfortably loose

Hips (C): Measure around the fullest part of the body at the top of the leg

SPORT FITNESS
ACI BRANDS INC.



ACI BRANDS INC.

2616 Sheridan Garden Dr, Oakville, ON L6J 7Z2
Tel: 905-829-1566 Fax: 905-829-1766
Email: golf@acibrands.com
SS06551-0821

www.acibrands.com