

# make·do® CARDBOARD DINOSAUR MASK

**MASK: 9x Strap A** **1x Panel B**

16-24" 400-600mm 14" 355mm

2.5-3" 60-75mm 8" 200mm

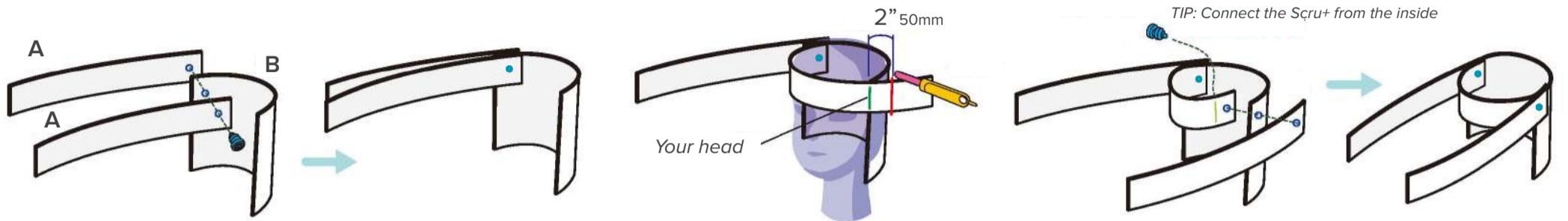
Pay attention to flute direction! 3x Scruc+ 12x Scruc

**TEETH: 1x Strap C** **EYES: 1x Panel D**

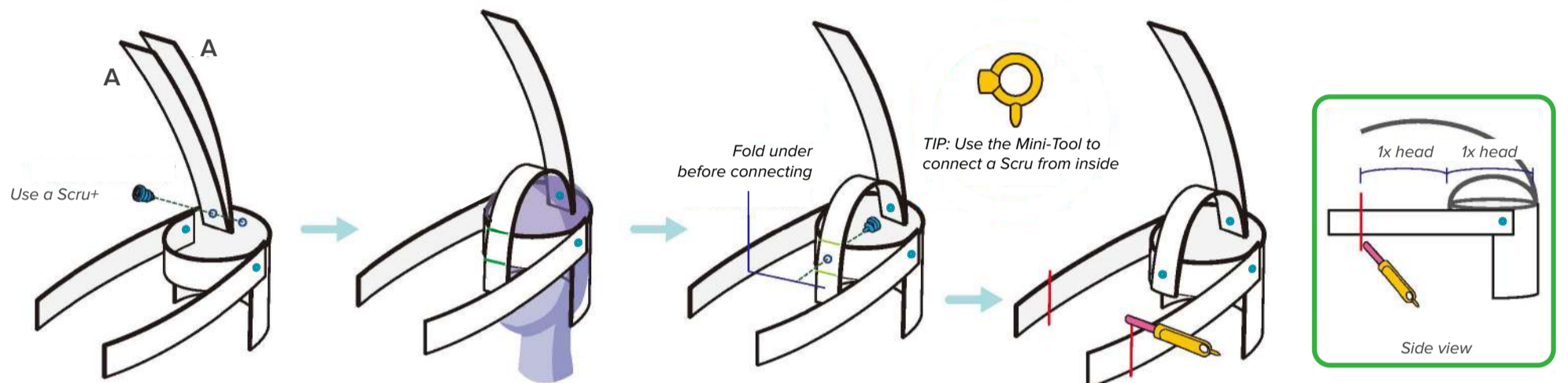
16-24" 400-600mm 6-8" 150-200mm

4-6" 100-150mm 5-7" 125-175mm

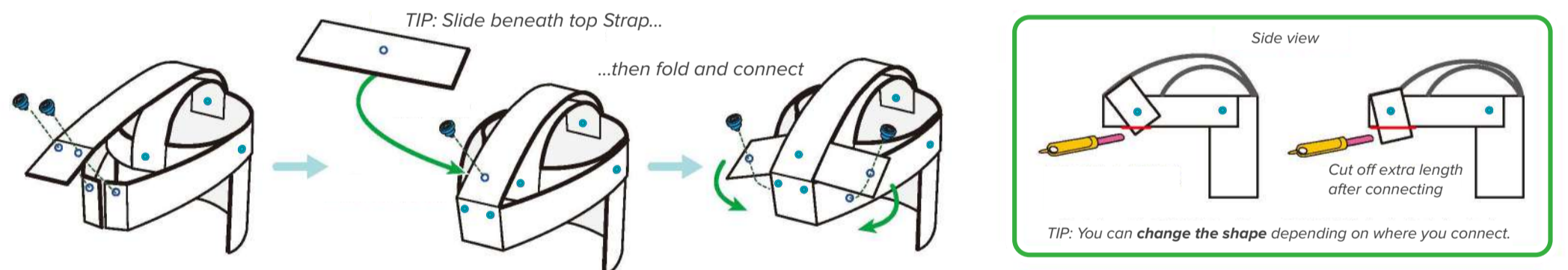
10x Scruc



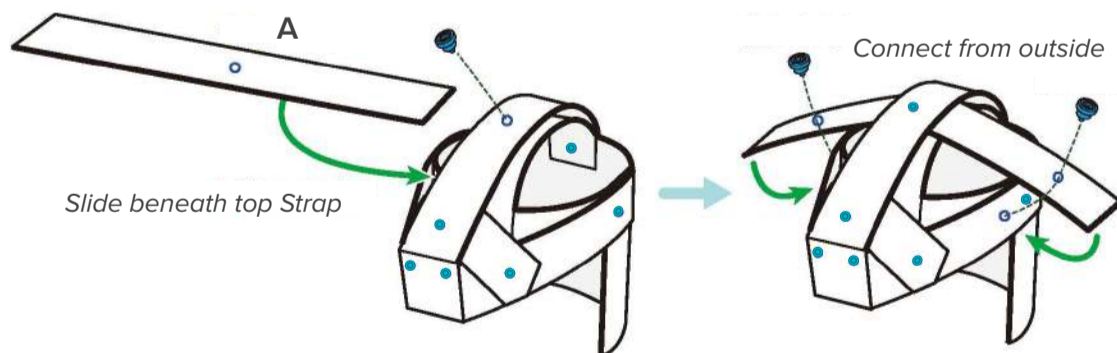
- Attach 2x Strap A at the corner of Panel B using 1x Scruc+. *TIP: Panel B corner is fixed between 2x Strap A*
- Measure and cut 2" (50mm) beyond the size of your head.
- Wrap the cut strap around and secure Panel B between a second Strap A. *TIP: Connect the Scruc+ from the inside*



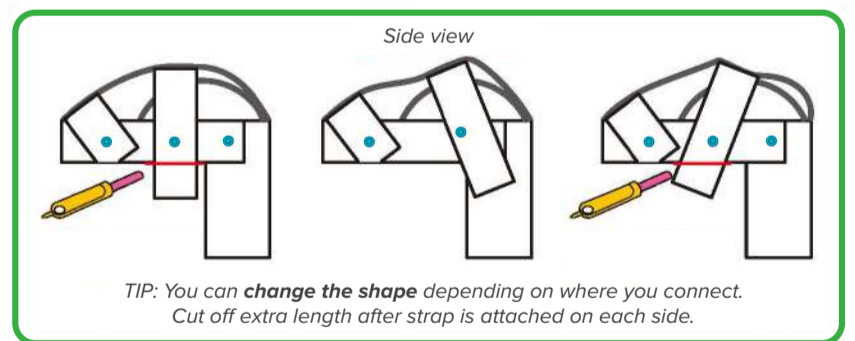
- Attach 2x Strap A in the center at the back.
- Bend the first Strap A down and mark where it fits the size of your head, then fold the extra strap inward.
- Optional: Reduce the length of the outer Strap A so that it is approx. twice the width of the head.



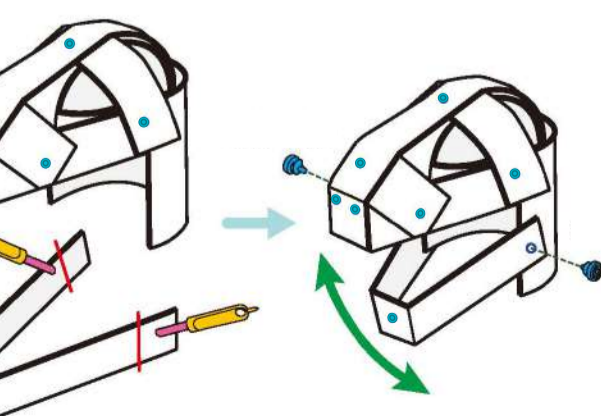
- Fold and overlap the top Strap A, attaching to the side straps at the front. *TIP: Slide beneath top Strap... then fold and connect*
- Cut 1x Strap A in half. Slide it behind the front strap, then fold down to attach on each side.



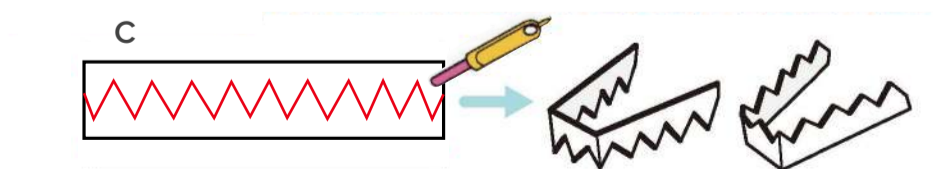
- Connect Strap A behind the strap at the top, then fold down to attach at the sides.



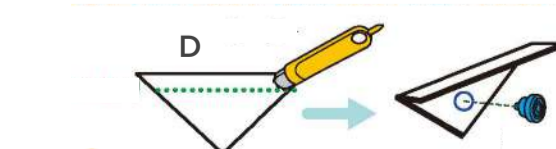
- Fold the ends and connect.



- Measure and cut to match the length of your upper jaw. Attach with a Scruc from each side.



- Cut teeth from cardboard in a contrasting color. One strip can become two rows of teeth! Fold and attach to the inside of each jaw.



- Create a unique eye shape, attach to the side Strap. Your dinosaur mask is complete!

CARDBOARD

