

MABEL SERIES

MABEL is a contemporary series that displays subtle movement and colour variation for a soft limestone look. Available in four colours and three finishes including a feature fishbone tile.



PRODUCT TYPE: Glazed porcelain

COLOURS: Cream, Putty, Taupe and Dark Taupe

SIZES: 300x300mm, 300x600mm and 600x600mm
Rectified Edges

FINISHES/USAGE:

AESTHETIC QUALITIES:

ORIGIN:

TECHNICAL DATA:

Matt, Grip and Fishbone/Wall and Floor

Subtle movement and colour variation

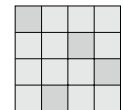
N/A

P3 Pendulum slip rating/Matt
P4 Pendulum slip rating/Grip

There is inherent variation in colour and calibration between plain tiles and fishbone tiles due to the different production process. Please inspect the tiles carefully prior to installation.

More technical data on last page

VARIATION:

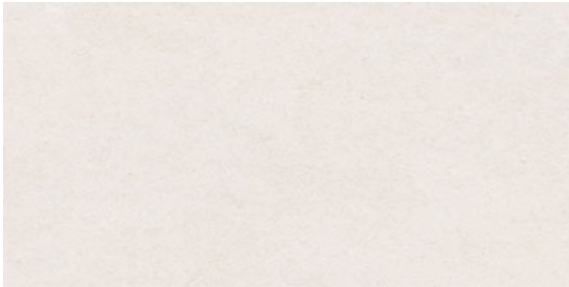


V2

Variation is an inherent property of tiles and stone. Sizes are nominal and may include a joint.

MABEL SERIES

PRODUCT INFORMATION



Cream

Matt 300x300mm | 300x600mm | 600x600mm



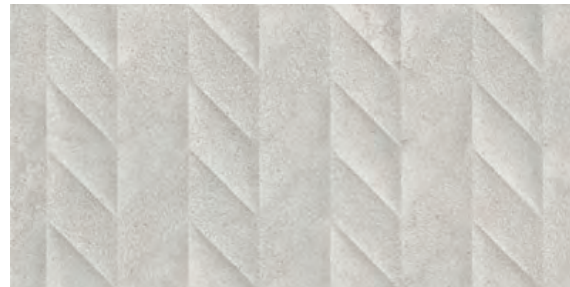
Cream

Fishbone 300x600mm



Putty

Matt 300x300mm | 300x600mm | 600x600mm
Grip 300x600mm



Putty

Fishbone 300x600mm



Variation is an inherent property of tiles and stone. Sizes are nominal and may include a joint.

MABEL SERIES

PRODUCT INFORMATION



Taupe

Matt 300x300mm | 300x600mm | 600x600mm



Taupe

Fishbone 300x600mm



Dark Taupe

Matt 300x300mm | 300x600mm | 600x600mm
Grip 300x600mm



Variation is an inherent property of tiles and stone. Sizes are nominal and may include a joint.

MABEL SERIES

LIFESTYLE IMAGES



Variation is an inherent property of tiles and stone. Sizes are nominal and may include a joint.

MABEL SERIES

TECHNICAL DATA

Technical Characteristics	Test Method	Requirement	Result
Surface quality	ISO 10545-2	95%	100%
Length and Width	ISO 10545-2	± 0,6%	0.5%
Thickness	ISO 10545-2	± 0,5	± 0,5
Straightness of sides	ISO 10545-2	± 0,5%	± 0,3%
Water Absorbtion	ISO 10545-3	3%	3%
Modulus of Rupture	ISO 10545-4	35	38
Breaking Strength	ISO 10545-4	1100	1300
Crazing Resistance	ISO 10545-11	Pass	Resistant
Chemical Resistance	ISO 10545-13	Declared Value	ULA / UHB
Stain Resistance	ISO 10545-14	Minimum Class 3	Class 5