



**BB&S LIGHTING
STUDIOS**

Pipeline System Install at TV2 Norway

COMPACT BEAMLIGHT | AREA 48 | FORCE 7 LED | PIPELINE REFLECT | PIPELINE RAW

THE BB&S LIGHTING STORY



Peter Plesner brought his diverse experience working as a lighting designer for broadcast, musical tours and theatre to BB&S Lighting, which he co-founded in Denmark in 1999. Since then he's been dedicated to making high performance LED lights, and was among the first to pioneer remote phosphor technology, as well as other innovative professional LED light fixtures.

Today BB&S LIGHTING of Denmark presents an expanded array of award-winning high-end

LED lighting. It's no wonder BB&S is the choice of professional filmmakers, broadcast lighting designers, videographers, documentarians and architectural lighting across the globe. BB&S Lights are available from top professional lighting dealers worldwide. And for custom work, the design experts at BB&S Lighting are on hand to design the perfect installation for your studio, stage, or arena.

LED LIGHTING FOR OVER 20 YEARS

BB&S
LIGHTING PEOPLE

Just because a light is small doesn't mean it should not have all the good features of a big light.

The typical broadcast studio twenty years ago was a 20 x 20 meter blackbox, 12 meters high—with a messy electrical grid, hoists and a clutter of lights and diffusers. Today it has changed. Many news/lifestyle programs are shot in locations overlooking fjords, city skylines and harbor fronts. Lighting is now a more integrated part of the entire set design: there are no limitations as to where to point the camera—even the ceiling is used for intros and outros. BB&S has developed specific lighting instruments that fulfill these needs and now offer a full range of lighting.

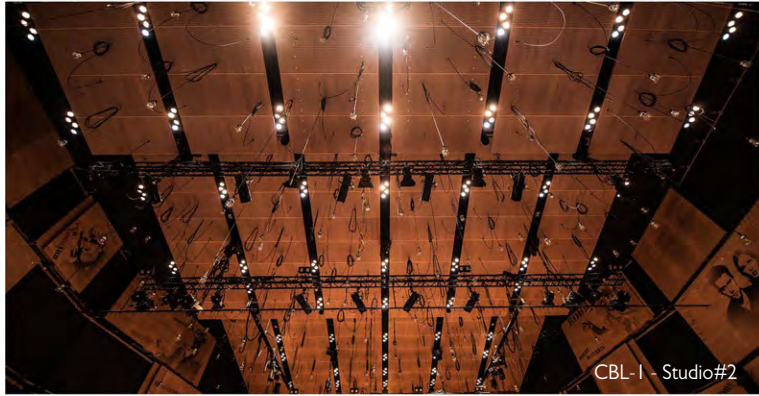
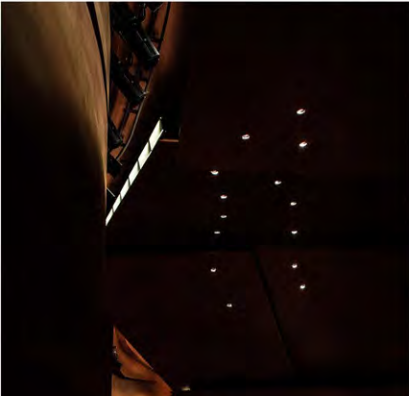


Compact Beamlight

The Compact Beamlight 1 is a very narrow beam punch-light. With an optical system designed to be free of light spill, its super high efficiency transforms 90% of the high CRI illumination produced by the LED into a crisp narrow beam. CBL is designed to do all the things that a reflector-based downlight will not.

To fit the project CBL is available in a variety of fixed beam-angles (7-degrees to 14- degrees) CCT or 11-degree bicolor (2700° to 5600°K). Drawing just 36 Watts, it runs off most standard 1050Ma LED drivers or the BB&S 4-Way Controller when sophisticated control is needed. A range of useful accessories are available.

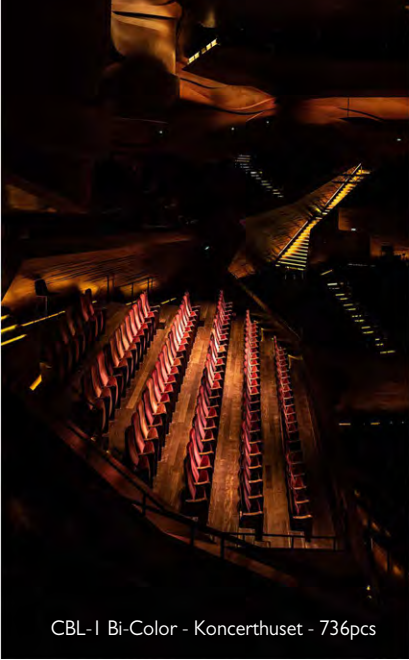




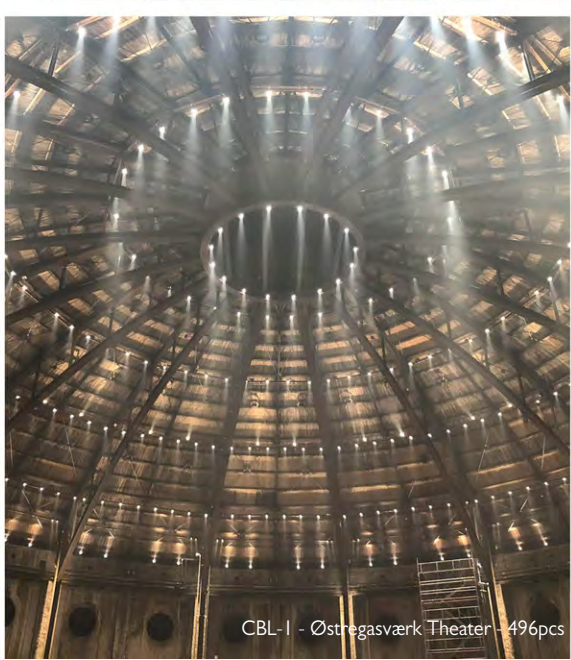
CBL-I - Studio#2



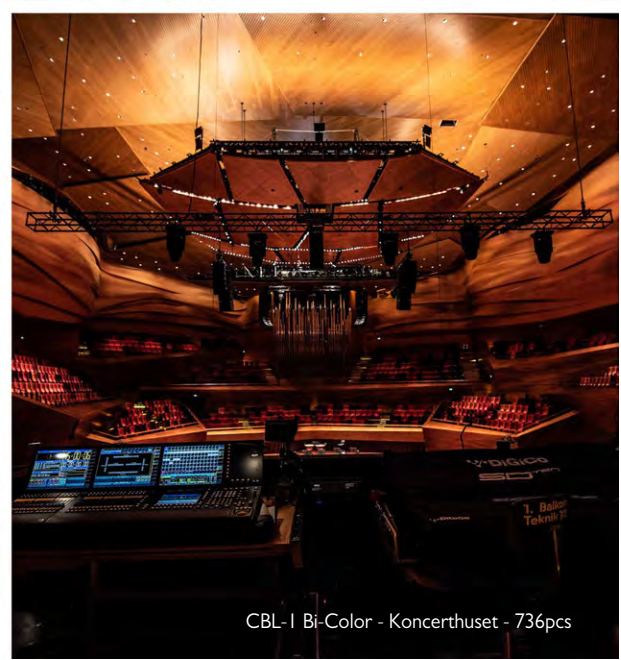
CBL-I ACL - @IlluminateCPH



CBL-I Bi-Color - Koncerthuset - 736pcs



CBL-I - Østregasværk Theater - 496pcs



CBL-I Bi-Color - Koncerthuset - 736pcs



CBL-I Bi-Color - Koncerthuset - 736pcs



CBL-I ACL - Dancing with the Stars DK

Compact Beamlight at Work

CBL I has been used in
a variety of applications.
Where will your
imagination take it?

CBL 1



CBL-I - Østregasværk Theater - 496pcs



Area 48 Studio - World Cup Studio



AREA 48 Studio, Soft & Color

The AREA 48 Studio with 48 Volt Power for accurate dimming to zero is an HD-friendly 98 TLCI soft light output that is comparable to a 1200 Watt traditional soft light while drawing only 122 watts and represents the next-generation in lighting technology for studio and location work. BB&S's new integrated LED technology moves the phosphor away from the LED itself, thereby greatly improving color rendering, consistency, and light output.

The AREA 48 Soft operates on 110-240 VDC as well as 10-20 VDC for Battery operation with HD-friendly 98 TLCI soft light output is comparable to a 1200 Watt traditional soft light while drawing only 122 watts and represents the next-generation in lighting technology for studio and location work.

The BB&S Area 48 Color, sets higher standards for dial-in, full-color as well as true white accuracy. With a similarly small footprint as standard Area 48s, the new version is the most compact full color LED panel unit on the market today.



2x2 Area 48 Studio



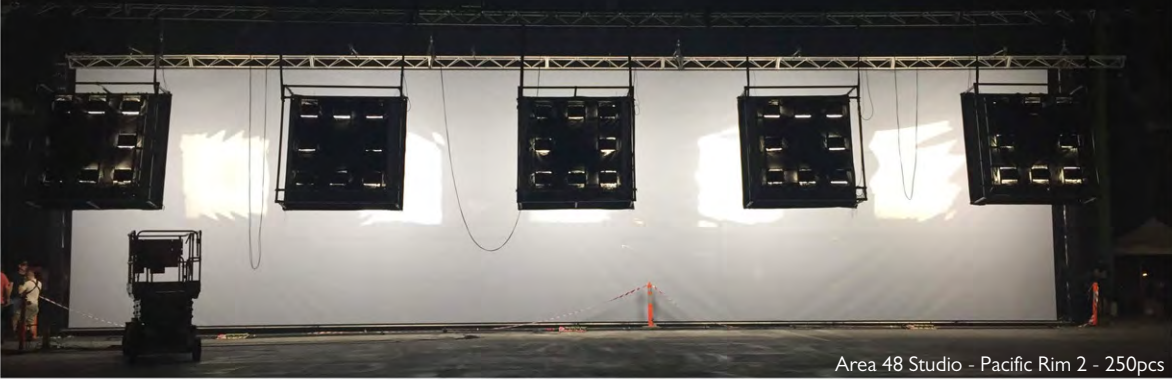
Area 48 Studio - RUV Studio Iceland



Area 48 Soft - Pop Up Studio



Area 48 Soft LightBox - News Studio



Area 48 Studio - Pacific Rim 2 - 250pcs



Area 48 Studio - Fashion shoot



Area 48 Studio Green Screen - Pipeline 4-Bank Lightbox



Area 48 Studio - TV2 News DK



Area 48 Soft - 126 pcs

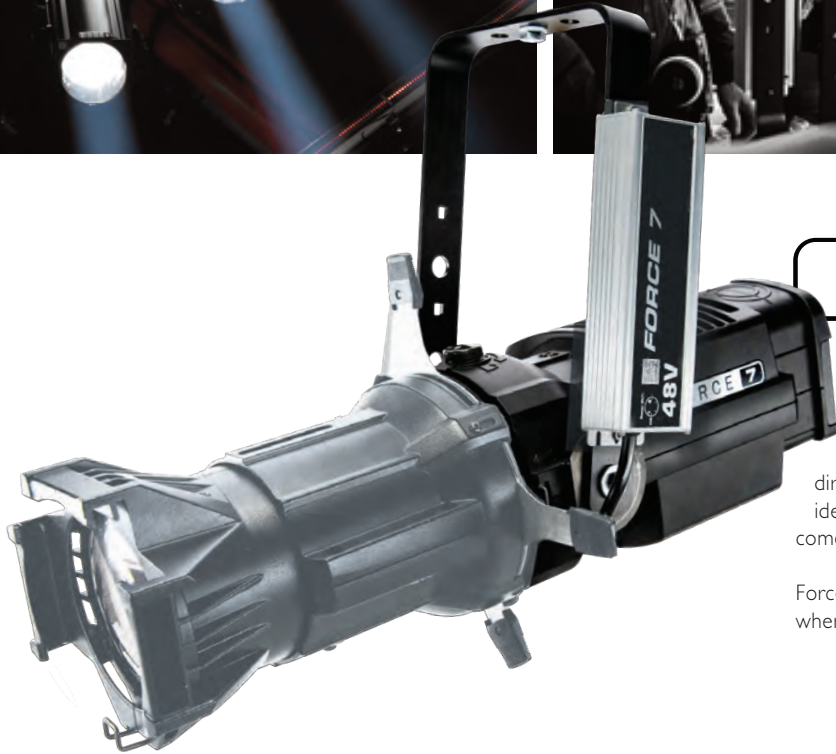
AREA 48



Area 48 - DR Koncerthuset - 160pcs



Area 48 - Pirates of the Caribbean - 110 pcs



FORCE 7

This LED profile spot is often used on stages, theatres, and specialty lighting such as illuminating TV anchorpersons. It delivers a crisp, high CRI even field of light, with single shadow projection. Output can be directed easily thanks to its beam shaping shutters. And it is ideal for Gobos. It consumes just 185 Watts maximum. It comes with with a variety of lens packages and accessories.

Force 7 is typically used from 6 meters and for higher throws where punchy projection is needed.



Force 7 & Area 48 - FOX News



PIPELINE REFLECT™

A new range of superior quality fixtures with integral reflectors offering optimal control, double output of the Pipes alone and dispersed light spanning a 90° angle with practically no spill.

- Pipeline Reflect Singles — Individual Pipes in Reflector Housings
- Pipeline Reflect 2-Bank — Double Pipes in Reflector Housings
- Choose from 1', 2', 4', 6', 8' lengths

Great for Edge light around windows, stages, etc.



Pipeline System Banks & Lightboxes



PIPELINE RAW™

Pipeline is an expandable array of customizable cylindrical fixtures that produce soft, projected, fully dimmable 100%-0 output, spread over 180 degrees.

Pipes are available in lengths of 4", 8", 1', 2', 3' and 4' (101mm, 203mm, 305mm, 610mm, 914mm, 1219mm) that can be customized in banks, or lightboxes.

RAW Pipes run off 48V for precise dimming.



Pipeline System Installed at TV2 Norway



Good Morning Norway



Pipeline System Lightbox, TV2 News Norway

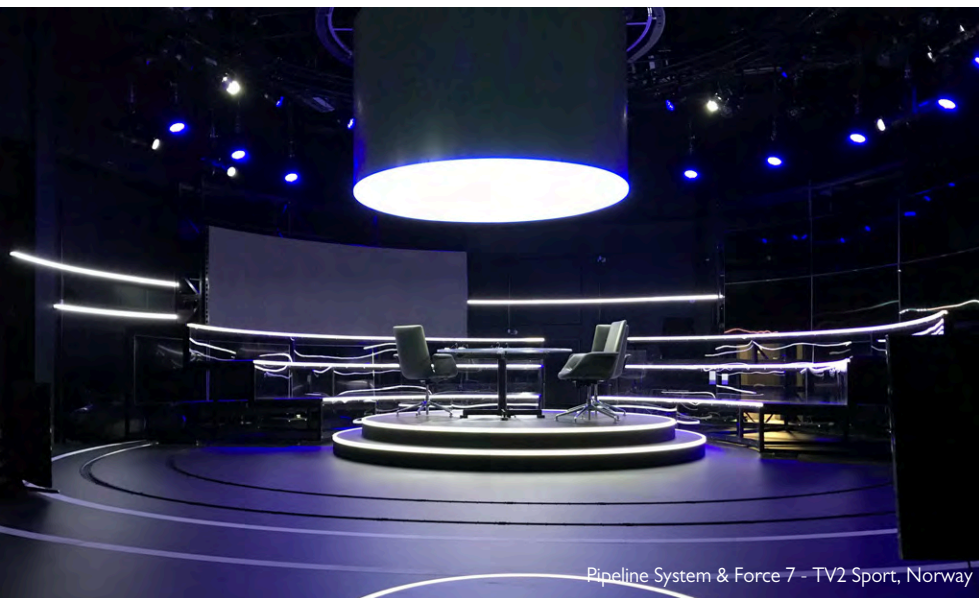


Pipeline System & Area 48 Studio



Pipeline System, Area 48 Studio & Force 7 - Jakarta News

Full Complement of
Studio Fixtures:
Area 48 - Pipeline - Force 7



Pipeline System & Force 7 - TV2 Sport, Norway



Area 48 Studio & Force 7 - News Studio, Indonesia



Pipeline Raw, Pipeline Reflect, Pipeline 2-Foot 2-Banks
TV2 News Studio, Norway

INTERNATIONAL SALES

Distribution & Production
Tel.: +45 70 27 42 41
sales@brothers-sons.dk
brothers-sons.dk

SALES U.S.A.

Tel.: 1-800-820-6610
info@bbslighting.com
bbslighting.com

RENTAL SUPPORT

Rental and Sales
Tel.: +46 70 333 78 00
info@bbsrentalsupport.com