



BB&S
LIGHTING PEOPLE

AREA 48 COLOR SPECIFICATIONS

POWER

- Power Supply: 48VDC
- AC Power: 100-240V 50/60Hz
- Max Power Consumption: 160 Watts

LED

- Premium LED RGBWW arrays

CONTROL

Manual operation via touchpanel
Or DMX 512/ RDM
DMX 512 also allows daisy-chaining
8/16 bit dimming from 0 to 100%

DIMENSIONS

W: 36cm / 14"
H: 28cm / 11"
D: 13cm / 5"
Weight including power supply:
4.6 kg/ 10 pounds

THERMAL

Ambient operation from
-20° to 40°C / -4° to 104° F

BB&S
LIGHTING PEOPLE
bbslighting.com

AREA 48 COLOR™

Area 48 Color

Area 48 Color is the most compact and powerful, full-color LED panel light on the market today. Designed to exceed the demanding criteria of cinematographers and lighting directors working with today's high-resolution cameras, it provides unparalleled color accurate illumination in both white light and R/G/B. With a range of 2500K° to 10,000°K color temperature, it delivers 13,000 Lumen output (compared to a 1500W tungsten soft), and draws just 160W. It operates flicker-free and silent (fan-free design), and is totally free of the color shift inherent in most panel fixtures even while dimming from 100% to zero. Area 48 Color projects accurate, soft output with 105° light dispersion.

Raises Color Accuracy Bar

The Area 48 Color sets yet higher standards for color accuracy. After 5 years of research, BB&S has developed a proprietary procedure and color algorithm to ensure precise color matching. Additionally BB&S selects the highest standard R/G/B and bi-color white LEDs (2700°K and 5600°K) that are selectively binned for quality.

Skin Tones Matter

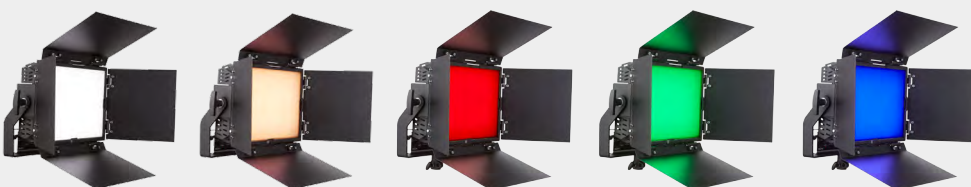
To compose artistic images, natural skin tones are crucial. BB&S has worked hard to optimize the color mix, making sure that the essential wavelengths for generating a natural look are present and consistent over the white spectrum.

Perfect Whites & R/G/B

New Area 48 Color delivers stunning saturated and tinted colors as well as clean white light in both 2700°K and 5600°K at a higher 13,000 Lumen output. It matches the original Area 48's famous remote phosphor daylight and tungsten color rendering at both ends of the spectrum. All while drawing only 160W AC at full power.

Soft Output, Wide Dispersion

The Area 48 Color outputs 13,000 Lumens, comparable to a 1500W tungsten soft light. With an even spherical light output, it delivers super soft light with wide 105° dispersion.





BB&S
LIGHTING PEOPLE

AREA 48 COLOR™

Area 48 Color SKW: BBS-2201

Intuitive Touchscreen Operation

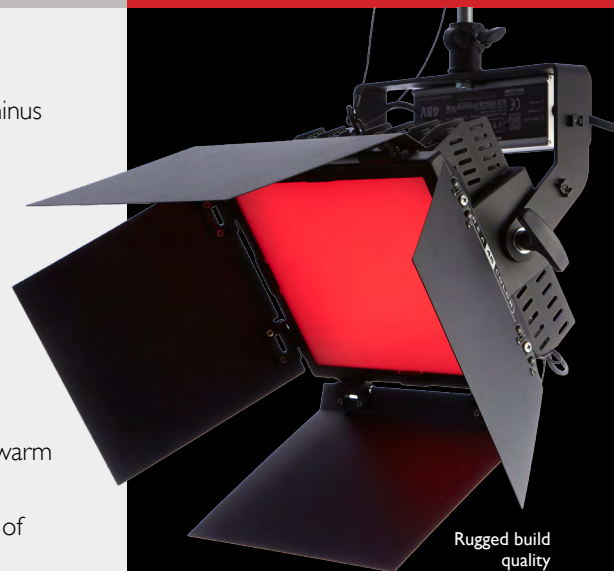
A unique onboard touchscreen offers local control over the ON/OFF function, plus/minus green, all colors and of course dimming.

Small Footprint & Standard Accessories

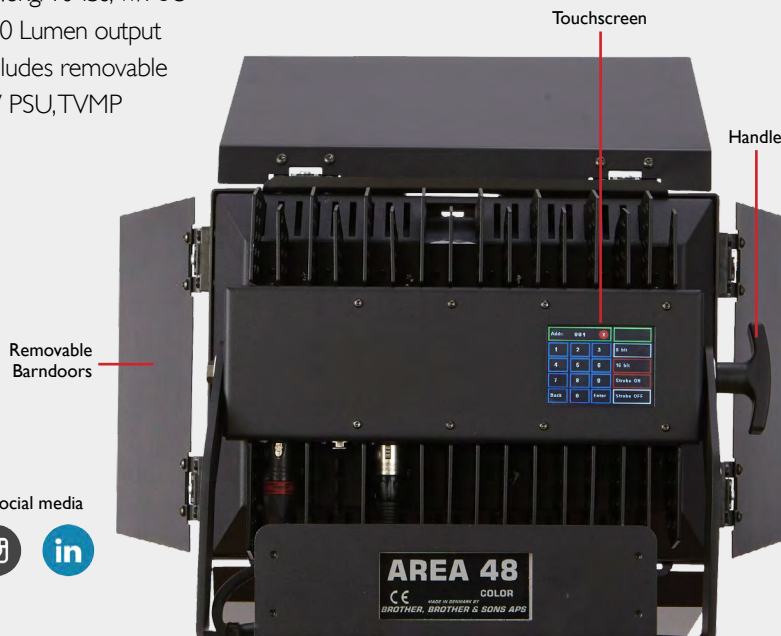
Area 48 Color measures 36cm/14" wide, by 28cm/11" high, by 13cm/5" deep and weighs 4.6 kg/10 pounds including power supply, so it is well suited for stands or lighting grids with the PSU mounted on the yoke. It comes with a 48V power supply, detachable barndoors, PowerCon True One locking AC 2 meter cable and TVMP.

Top 10 Advances of Area 48 Color

- **Wider Color Gamut** 2500°K-10,000°K Incorporates R/G/B plus cool white and warm white, selectively binned 2700°K and 5600°K LEDs
- **Better Skin tones** BB&S' color mix refining ensures the presence and consistency of essential wavelengths necessary to generate a natural look
- **No color shift** Proprietary software maintains consistency in CCT points for drift-free dimming
- **Increased Accuracy** 96-98 TLCl throughout the full range
- **Flicker-free** at all Frame Rates Smooth 8/16- bit DMX/RDM dimming all the way to zero
- **Touchscreen** Including plus/minus green and color dimming.
- **Compact** 14"W x 11"H x 5"D (36cm W x 28cm H x 13cm D)
- **Lightweight** 4.6kg/10-lbs, w/PSU
- **Powerful** 13,000 Lumen output
- **Affordable** Includes removable barndoors, 48V PSU, TVMP



Rugged build quality



Removable Barndoors

Touchscreen

Handle

Connect with us on social media



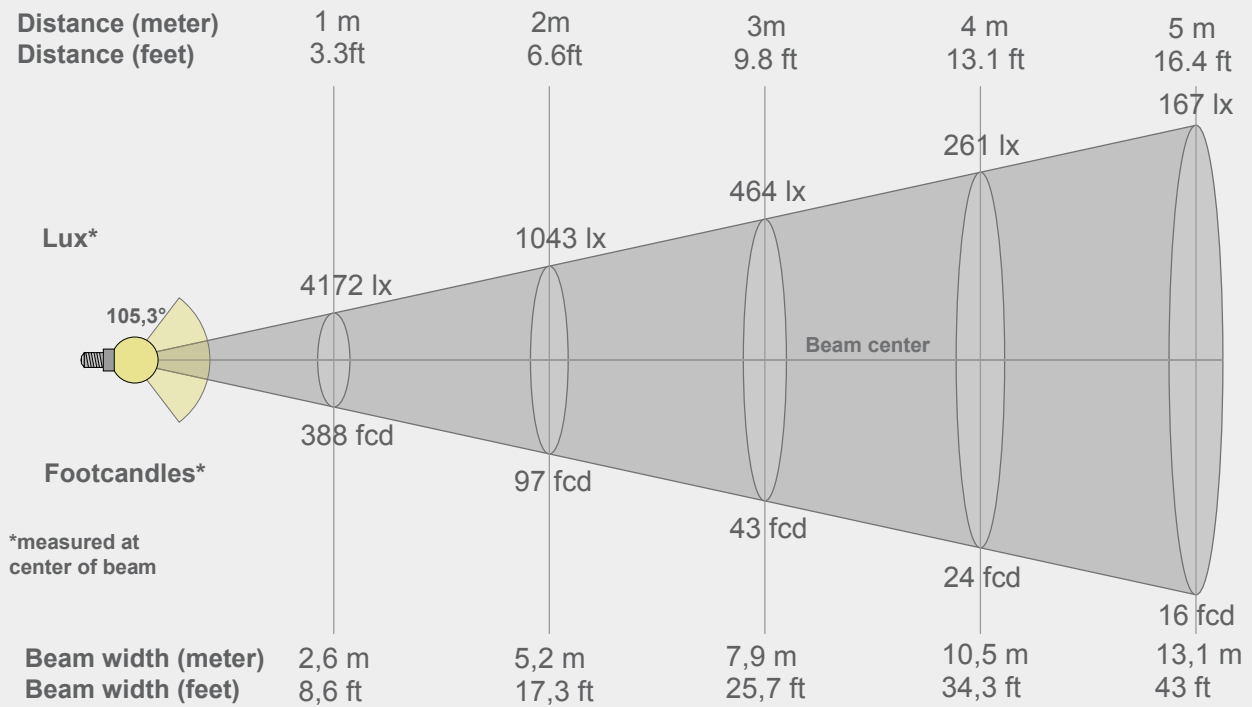
BB&S SALES INTERNATIONAL
sales@brothers-sons.dk
Tel +45 70 27 42 41

BB&S SALES U.S.A.
info@bbslighting.com
Tel 1-800-820-6610

BB&S RENTAL & SALES SUPPORT
info@bbsrentalsupport.com
Tel +46 70 333 78 00

BB&S
LIGHTING PEOPLE
bbslighting.com

BEAM DETAILS 2700



Beam intensities from 1-20m

| 1m | 2m | 3m | 4m | 5m | 6m | 7m | 8m | 9m | 10m | 11m | 12m | 13m | 14m | 15m | 16m | 17m | 18m | 19m | 20m |
|----------|---------|---------|---------|---------|---------|--------|--------|--------|--------|--------|--------|--------|--------|--------|--------|--------|--------|--------|--------|
| 3,3ft | 6,6ft | 9,8ft | 13,1ft | 16,4ft | 19,7ft | 23ft | 26,2ft | 29,5ft | 32,8ft | 36,1ft | 39,4ft | 42,7ft | 45,9ft | 49,2ft | 52,5ft | 55,8ft | 59,1ft | 62,3ft | 65,6ft |
| 4172lx | 1043lx | 464lx | 261lx | 167lx | 116lx | 85lx | 65lx | 52lx | 42lx | 34lx | 29lx | 25lx | 21lx | 19lx | 16lx | 14lx | 13lx | 12lx | 10lx |
| 387,6fcd | 96,9fcd | 43,1fcd | 24,2fcd | 15,5fcd | 10,8fcd | 7,9fcd | 6,1fcd | 4,8fcd | 3,9fcd | 3,2fcd | 2,7fcd | 2,3fcd | 2fcd | 1,7fcd | 1,5fcd | 1,3fcd | 1,2fcd | 1,1fcd | 1fcd |

Intensities in 0° c-plane

| 0° | 5° | 10° | 15° | 20° | 25° | 30° | 35° | 40° | 45° | 50° | 55° | 60° | 65° | 70° | 75° | 80° | 85° | 90° | 95° |
|------|------|------|------|------|------|------|------|------|------|------|------|------|------|------|-----|-----|-----|-----|-----|
| 4172 | 4146 | 4072 | 3954 | 3793 | 3596 | 3365 | 3109 | 2832 | 2543 | 2245 | 1940 | 1634 | 1329 | 1032 | 746 | 477 | 226 | 32 | 4 |
| 100% | 99% | 98% | 95% | 91% | 86% | 81% | 75% | 68% | 61% | 54% | 47% | 39% | 32% | 25% | 18% | 11% | 5% | 1% | 0% |

Intensities in 90° c-plane

| 0° | 5° | 10° | 15° | 20° | 25° | 30° | 35° | 40° | 45° | 50° | 55° | 60° | 65° | 70° | 75° | 80° | 85° | 90° | 95° |
|------|------|------|------|------|------|------|------|------|------|------|------|------|------|------|-----|-----|-----|-----|-----|
| 4172 | 4162 | 4090 | 3974 | 3813 | 3614 | 3381 | 3124 | 2846 | 2555 | 2256 | 1951 | 1640 | 1330 | 1027 | 734 | 460 | 211 | 43 | 4 |
| 100% | 100% | 98% | 95% | 91% | 87% | 81% | 75% | 68% | 61% | 54% | 47% | 39% | 32% | 25% | 18% | 11% | 5% | 1% | 0% |

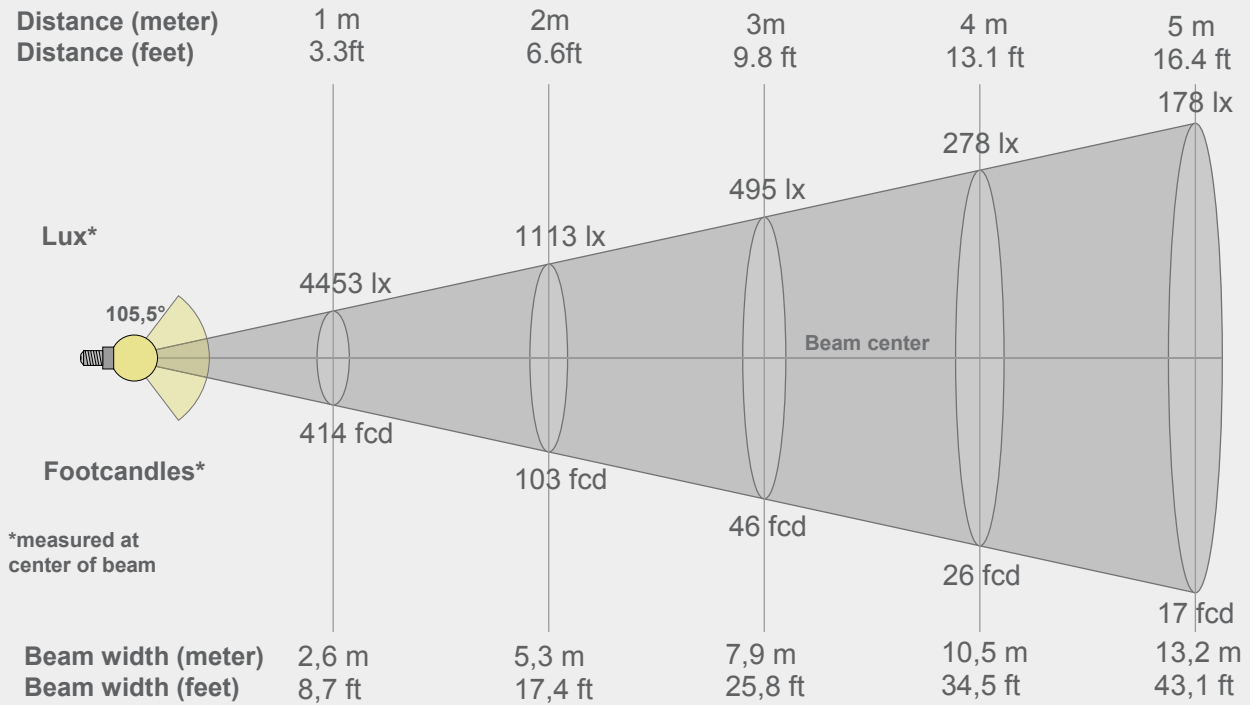
Intensities in 180° c-plane

| 0° | 5° | 10° | 15° | 20° | 25° | 30° | 35° | 40° | 45° | 50° | 55° | 60° | 65° | 70° | 75° | 80° | 85° | 90° | 95° |
|------|------|------|------|------|------|------|------|------|------|------|------|------|------|------|-----|-----|-----|-----|-----|
| 4172 | 4144 | 4071 | 3953 | 3793 | 3597 | 3369 | 3114 | 2838 | 2549 | 2246 | 1939 | 1632 | 1328 | 1032 | 746 | 477 | 223 | 27 | 4 |
| 100% | 99% | 98% | 95% | 91% | 86% | 81% | 75% | 68% | 61% | 54% | 46% | 39% | 32% | 25% | 18% | 11% | 5% | 1% | 0% |

Intensities in 270° c-plane

| 0° | 5° | 10° | 15° | 20° | 25° | 30° | 35° | 40° | 45° | 50° | 55° | 60° | 65° | 70° | 75° | 80° | 85° | 90° | 95° |
|------|------|------|------|------|------|------|------|------|------|------|------|------|------|------|-----|-----|-----|-----|-----|
| 4172 | 4160 | 4089 | 3972 | 3811 | 3615 | 3386 | 3130 | 2852 | 2560 | 2258 | 1950 | 1640 | 1334 | 1033 | 746 | 476 | 228 | 48 | 5 |
| 100% | 100% | 98% | 95% | 91% | 87% | 81% | 75% | 68% | 61% | 54% | 47% | 39% | 32% | 25% | 18% | 11% | 5% | 1% | 0% |

| Beam angle 50% | Field angle 10% | Cutoff angle 2,5% | Intensity ratio in 120° cone | Intensity ratio in 90° cone |
|----------------|-----------------|-------------------|------------------------------|-----------------------------|
| 105,3° | 162,1° | 175,6° | 78,5% | 54,4% |



Beam intensities from 1-20m

| 1m | 2m | 3m | 4m | 5m | 6m | 7m | 8m | 9m | 10m | 11m | 12m | 13m | 14m | 15m | 16m | 17m | 18m | 19m | 20m |
|----------|----------|-------|---------|---------|---------|--------|--------|--------|--------|--------|--------|--------|--------|--------|--------|--------|--------|--------|--------|
| 3,3ft | 6,6ft | 9,8ft | 13,1ft | 16,4ft | 19,7ft | 23ft | 26,2ft | 29,5ft | 32,8ft | 36,1ft | 39,4ft | 42,7ft | 45,9ft | 49,2ft | 52,5ft | 55,8ft | 59,1ft | 62,3ft | 65,6ft |
| 4453lx | 1113lx | 495lx | 278lx | 178lx | 124lx | 91lx | 70lx | 55lx | 45lx | 37lx | 31lx | 26lx | 23lx | 20lx | 17lx | 15lx | 14lx | 12lx | 11lx |
| 413,7fcd | 103,4fcd | 46fcd | 25,9fcd | 16,5fcd | 11,5fcd | 8,4fcd | 6,5fcd | 5,1fcd | 4,1fcd | 3,4fcd | 2,9fcd | 2,4fcd | 2,1fcd | 1,8fcd | 1,6fcd | 1,4fcd | 1,3fcd | 1,1fcd | 1fcd |

Intensities in 0° c-plane

| 0° | 5° | 10° | 15° | 20° | 25° | 30° | 35° | 40° | 45° | 50° | 55° | 60° | 65° | 70° | 75° | 80° | 85° | 90° | 95° |
|------|------|------|------|------|------|------|------|------|------|------|------|------|------|------|-----|-----|-----|-----|-----|
| 4453 | 4424 | 4348 | 4224 | 4055 | 3846 | 3602 | 3328 | 3032 | 2724 | 2404 | 2079 | 1751 | 1423 | 1105 | 798 | 508 | 240 | 33 | 3 |
| 100% | 99% | 98% | 95% | 91% | 86% | 81% | 75% | 68% | 61% | 54% | 47% | 39% | 32% | 25% | 18% | 11% | 5% | 1% | 0% |

Intensities in 90° c-plane

| 0° | 5° | 10° | 15° | 20° | 25° | 30° | 35° | 40° | 45° | 50° | 55° | 60° | 65° | 70° | 75° | 80° | 85° | 90° | 95° |
|------|------|------|------|------|------|------|------|------|------|------|------|------|------|------|-----|-----|-----|-----|-----|
| 4453 | 4430 | 4354 | 4228 | 4056 | 3845 | 3601 | 3328 | 3034 | 2726 | 2408 | 2083 | 1752 | 1422 | 1098 | 786 | 493 | 228 | 49 | 3 |
| 100% | 99% | 98% | 95% | 91% | 86% | 81% | 75% | 68% | 61% | 54% | 47% | 39% | 32% | 25% | 18% | 11% | 5% | 1% | 0% |

Intensities in 180° c-plane

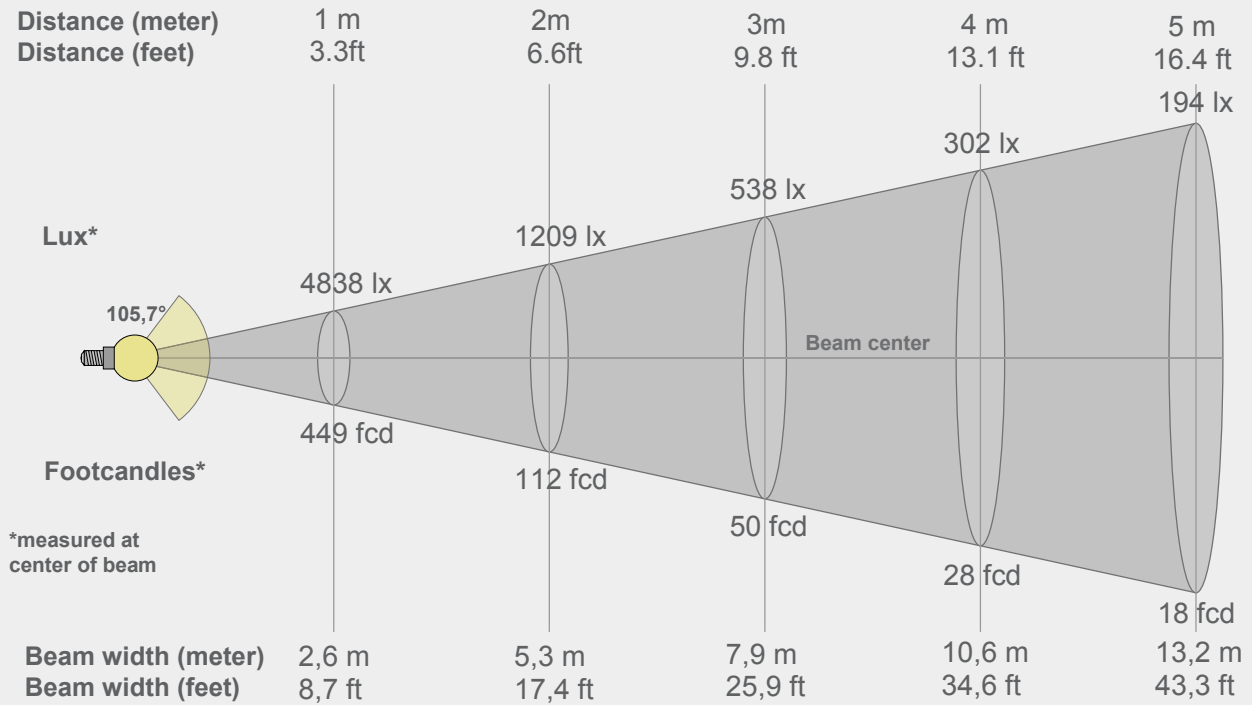
| 0° | 5° | 10° | 15° | 20° | 25° | 30° | 35° | 40° | 45° | 50° | 55° | 60° | 65° | 70° | 75° | 80° | 85° | 90° | 95° |
|------|------|------|------|------|------|------|------|------|------|------|------|------|------|------|-----|-----|-----|-----|-----|
| 4453 | 4426 | 4350 | 4229 | 4060 | 3848 | 3604 | 3333 | 3038 | 2728 | 2406 | 2078 | 1748 | 1422 | 1104 | 799 | 509 | 241 | 45 | 3 |
| 100% | 99% | 98% | 95% | 91% | 86% | 81% | 75% | 68% | 61% | 54% | 47% | 39% | 32% | 25% | 18% | 11% | 5% | 1% | 0% |

Intensities in 270° c-plane

| 0° | 5° | 10° | 15° | 20° | 25° | 30° | 35° | 40° | 45° | 50° | 55° | 60° | 65° | 70° | 75° | 80° | 85° | 90° | 95° |
|------|------|------|------|------|------|------|------|------|------|------|------|------|------|------|-----|-----|-----|-----|-----|
| 4453 | 4430 | 4353 | 4229 | 4059 | 3851 | 3609 | 3338 | 3044 | 2734 | 2411 | 2081 | 1749 | 1420 | 1100 | 792 | 503 | 236 | 48 | 4 |
| 100% | 99% | 98% | 95% | 91% | 86% | 81% | 75% | 68% | 61% | 54% | 47% | 39% | 32% | 25% | 18% | 11% | 5% | 1% | 0% |

| Beam angle 50% | Field angle 10% | Cutoff angle 2,5% | Intensity ratio in 120° cone | Intensity ratio in 90° cone |
|----------------|-----------------|-------------------|------------------------------|-----------------------------|
| 105,5° | 162,2° | 175,5° | 78,6% | 54,4% |

BEAM DETAILS 5600



Beam intensities from 1-20m

| 1m | 2m | 3m | 4m | 5m | 6m | 7m | 8m | 9m | 10m | 11m | 12m | 13m | 14m | 15m | 16m | 17m | 18m | 19m | 20m |
|----------|----------|---------|---------|--------|---------|--------|--------|--------|--------|--------|--------|--------|--------|--------|--------|--------|--------|--------|--------|
| 3,3ft | 6,6ft | 9,8ft | 13,1ft | 16,4ft | 19,7ft | 23ft | 26,2ft | 29,5ft | 32,8ft | 36,1ft | 39,4ft | 42,7ft | 45,9ft | 49,2ft | 52,5ft | 55,8ft | 59,1ft | 62,3ft | 65,6ft |
| 4838lx | 1209lx | 538lx | 302lx | 194lx | 134lx | 99lx | 76lx | 60lx | 48lx | 40lx | 34lx | 29lx | 25lx | 22lx | 19lx | 17lx | 15lx | 13lx | 12lx |
| 449,5fcd | 112,4fcd | 49,9fcd | 28,1fcd | 18fcd | 12,5fcd | 9,2fcd | 7fcd | 5,5fcd | 4,5fcd | 3,7fcd | 3,1fcd | 2,7fcd | 2,3fcd | 2fcd | 1,8fcd | 1,6fcd | 1,4fcd | 1,2fcd | 1,1fcd |

Intensities in 0° c-plane

| 0° | 5° | 10° | 15° | 20° | 25° | 30° | 35° | 40° | 45° | 50° | 55° | 60° | 65° | 70° | 75° | 80° | 85° | 90° | 95° |
|------|------|------|------|------|------|------|------|------|------|------|------|------|------|------|-----|-----|-----|-----|-----|
| 4838 | 4802 | 4719 | 4585 | 4403 | 4175 | 3910 | 3614 | 3293 | 2961 | 2615 | 2262 | 1904 | 1548 | 1202 | 869 | 554 | 263 | 48 | 5 |
| 100% | 99% | 98% | 95% | 91% | 86% | 81% | 75% | 68% | 61% | 54% | 47% | 39% | 32% | 25% | 18% | 11% | 5% | 1% | 0% |

Intensities in 90° c-plane

| 0° | 5° | 10° | 15° | 20° | 25° | 30° | 35° | 40° | 45° | 50° | 55° | 60° | 65° | 70° | 75° | 80° | 85° | 90° | 95° |
|------|------|------|------|------|------|------|------|------|------|------|------|------|------|------|-----|-----|-----|-----|-----|
| 4838 | 4843 | 4757 | 4620 | 4434 | 4205 | 3938 | 3641 | 3321 | 2985 | 2639 | 2284 | 1921 | 1560 | 1206 | 864 | 543 | 253 | 56 | 5 |
| 100% | 100% | 98% | 95% | 92% | 87% | 81% | 75% | 69% | 62% | 55% | 47% | 40% | 32% | 25% | 18% | 11% | 5% | 1% | 0% |

Intensities in 180° c-plane

| 0° | 5° | 10° | 15° | 20° | 25° | 30° | 35° | 40° | 45° | 50° | 55° | 60° | 65° | 70° | 75° | 80° | 85° | 90° | 95° |
|------|------|------|------|------|------|------|------|------|------|------|------|------|------|------|-----|-----|-----|-----|-----|
| 4838 | 4804 | 4723 | 4589 | 4406 | 4178 | 3914 | 3620 | 3302 | 2964 | 2616 | 2260 | 1902 | 1547 | 1203 | 870 | 555 | 263 | 42 | 4 |
| 100% | 99% | 98% | 95% | 91% | 86% | 81% | 75% | 68% | 61% | 54% | 47% | 39% | 32% | 25% | 18% | 11% | 5% | 1% | 0% |

Intensities in 270° c-plane

| 0° | 5° | 10° | 15° | 20° | 25° | 30° | 35° | 40° | 45° | 50° | 55° | 60° | 65° | 70° | 75° | 80° | 85° | 90° | 95° |
|------|------|------|------|------|------|------|------|------|------|------|------|------|------|------|-----|-----|-----|-----|-----|
| 4838 | 4844 | 4761 | 4625 | 4442 | 4214 | 3949 | 3654 | 3334 | 2994 | 2642 | 2281 | 1917 | 1557 | 1204 | 868 | 551 | 261 | 59 | 5 |
| 100% | 100% | 98% | 96% | 92% | 87% | 82% | 76% | 69% | 62% | 55% | 47% | 40% | 32% | 25% | 18% | 11% | 5% | 1% | 0% |

| Beam angle 50% | Field angle 10% | Cutoff angle 2,5% | Intensity ratio in 120° cone | Intensity ratio in 90° cone |
|----------------|-----------------|-------------------|------------------------------|-----------------------------|
| 105,7° | 162,2° | 175,6° | 78,5% | 54,3% |