

A photograph of a grand, ornate interior space, likely a museum or historical building. The ceiling is highly detailed with intricate carvings and a central chandelier. Two large, circular, illuminated light fixtures are suspended from the ceiling. The walls are lined with classical columns and arches. The lighting is warm and focused on the architectural details.

# BB&S LIGHTING ARCHITECTURAL

COMPACT BEAM LIGHT | K7 TWIST | FORCE 7 LED | PIPELINE REFLECT | PIPELINE RAW

## THE BB&S LIGHTING STORY



*Peter Plesner brought his diverse experience working as a lighting designer for broadcast, musical tours and theatre to BB&S Lighting, which he co-founded in Denmark in 1999. Since then he's been dedicated to making high performance LED lights, and was among the first to pioneer remote phosphor technology, as well as other innovative professional LED light fixtures.*

*Today BB&S LIGHTING of Denmark presents an expanded array of award-winning high-end*

*LED lighting. It's no wonder BB&S is the choice of professional filmmakers, broadcast lighting designers, videographers, documentarians and architectural lighting across the globe. BB&S Lights are available from top professional lighting dealers worldwide. And for custom work, the design experts at BB&S Lighting are on hand to design the perfect installation for your studio, stage, or arena.*

## LED LIGHTING FOR OVER 20 YEARS

**BB&S**  
LIGHTING PEOPLE

*Just because a light is small doesn't mean it should not have all the good features of a big light.*

### **From Broadcast to Architectural Lights**

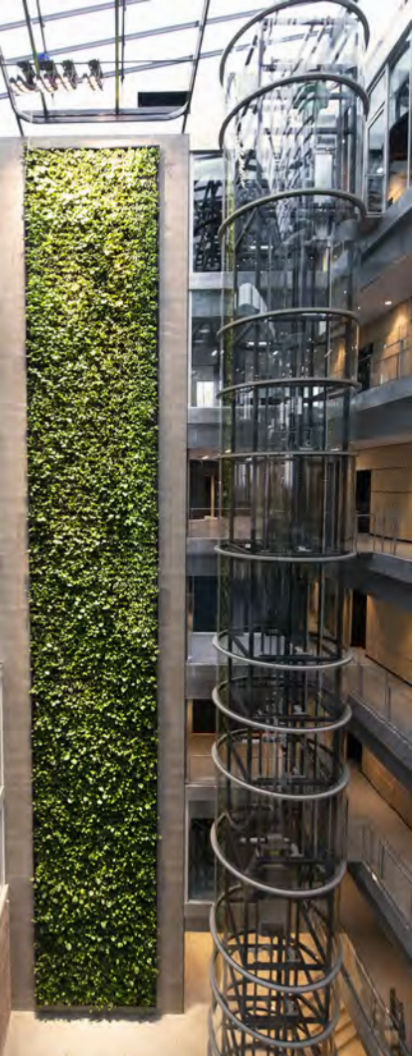
The typical broadcast studio twenty years ago was a 20 x 20 meter blackbox, 12 meters high—with a messy electrical grid, hoists and a clutter of lights and diffusers. Today it has changed. Many news/lifestyle programs are shot in locations overlooking fjords, city skylines and harbor fronts. Lighting is now a more integrated part of the entire set design: there are no limitations as to where to point the camera— even the ceiling is used for intros and outros. BB&S has developed specific lighting instruments that fulfill these needs and now offer a full range of lighting that is widely used in architectural installations.



### **Compact Beamlight**

CBL1 Rationale: The Compact Beamlight 1 is a very narrow beam punch-light. With an optical system designed to be free of light spill, its super high efficiency transforms 90% of the high CRI illumination produced by the LED into a crisp narrow beam. CBL is designed to do all the things that a reflector-based downlight will not.

To fit the project CBL is available in a variety of fixed beam-angles (7-degrees to 14- degrees) CCT or 11-degree bicolor (2700° to 5600°K). Drawing just 36 Watts, it runs off most standard 1050Ma LED drivers or the BB&S 4-Way Controller when sophisticated control is needed. A range of useful accessories are available.

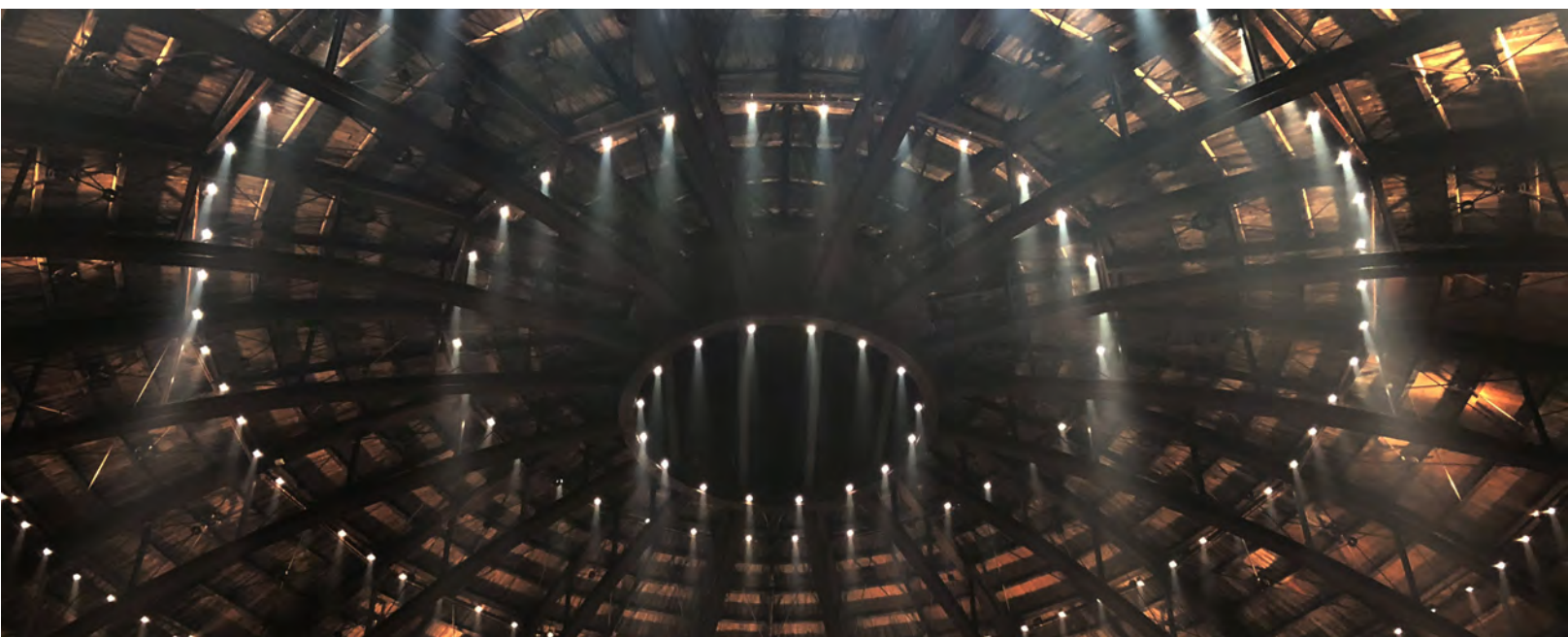




## **Compact Beamlight at Work**

CBLI has been used in a variety of applications. Where will your imagination take it?

# CBL 1

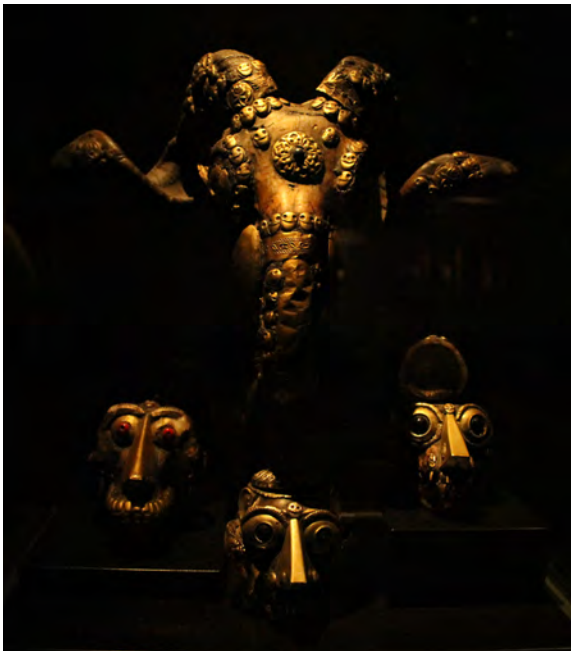
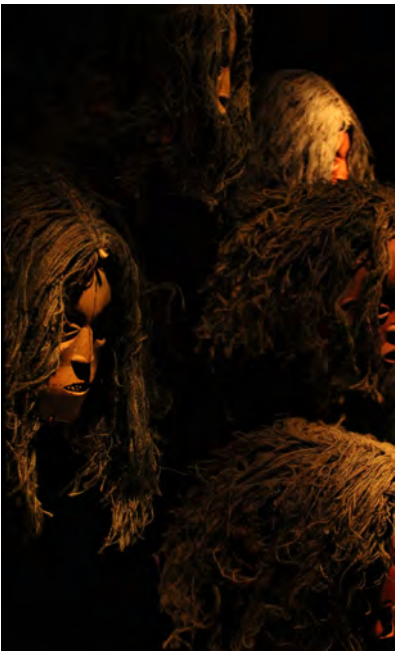




## K7 TWIST™



K7 is the smallest light ever made by BB&S. With its tiny size and a good 3 Watt High CRI light engine, the K7 has the same features as a bigger par 64 light, including interchangeable optics in Narrow, Medium and Asymmetrical. The Asymmetrical lens can spin 360-degrees when focused from the outside. Every K7 light additionally comes with detachable honeycomb. And for easy attachment, the light is magnetic and can be rigged in a variety of ways due to its circular form. It is the easiest-to-hide fixture available, providing up to 300 lumens of punch with a variety of CCT options.









K7





## FORCE 7

This LED profile spot is often used on stages and theatres, and specialty lighting such as illuminating TV anchorpersons. It delivers a crisp, high CRI even field of light, with single shadow projection. Output can be directed easily thanks to its beam shaping shutters. And it is ideal for Gobos. It consumes just 185 Watts maximum. It comes with with a variety of lens packages and accessories.

Force 7 is typically used from 6 meters and for higher throws where punchy projection is needed.





## PIPELINE REFLECT™

A new range of superior quality fixtures with integral reflectors offering optimal control, double output of the Pipes alone and dispersed light spanning a 90° angle with practically no spill.

- Pipeline Reflect Singles — Individual Pipes in Reflector Housings
- Pipeline Reflect 2-Bank — Double Pipes in Reflector Housings
- Choose from 1', 2', 4', 6', 8' lengths

Great for Edge light around windows, stages, etc.





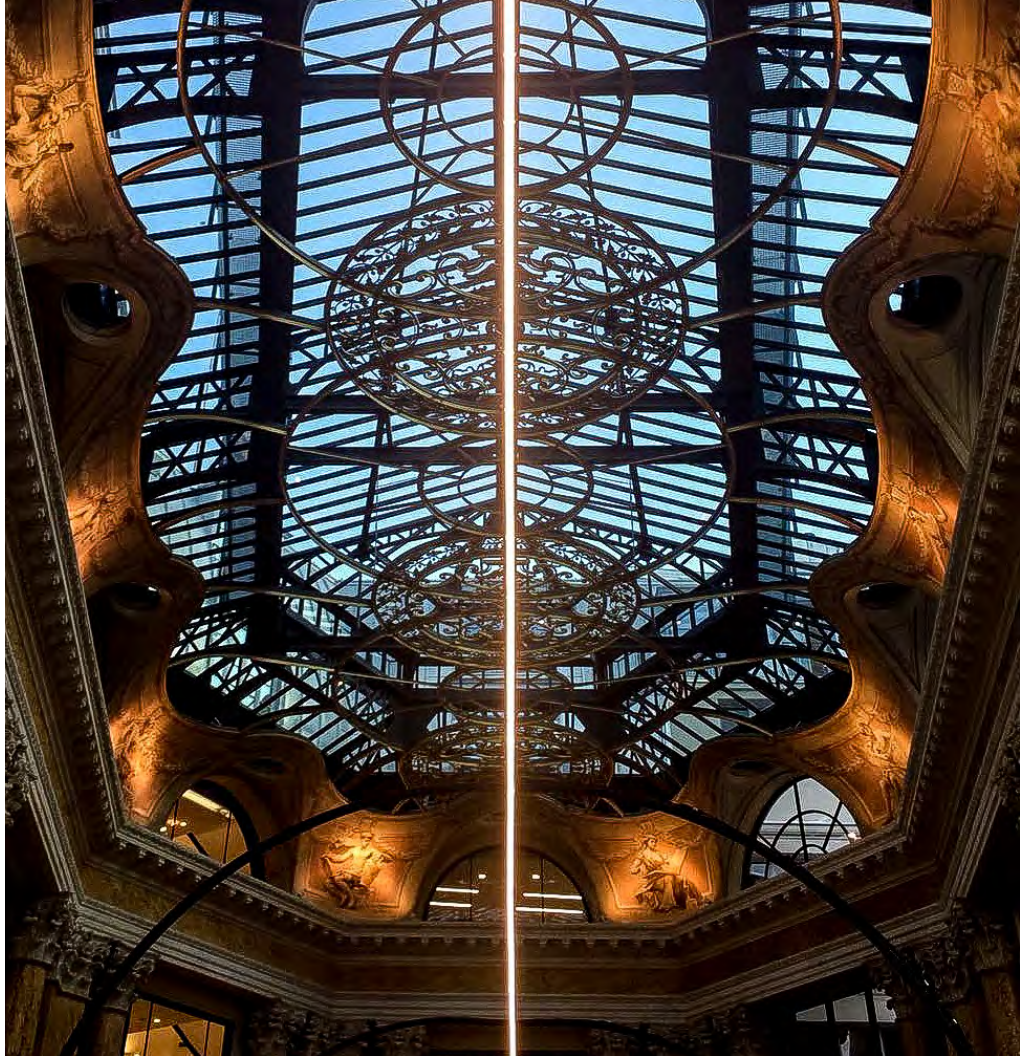
## PIPELINE RAW™

Pipeline is an expandable array of customizable cylindrical fixtures that produce soft, projected, fully dimmable 100%-0 output, spread over 180 degrees.

Pipes are available in lengths of 4", 8", 1', 2', 3' and 4' (101mm, 203mm, 305mm, 610mm, 914mm, 1219mm), that can be customized in banks, or lightboxes.

RAW Pipes run off 48V for precise dimming.

*Many thanks to: Moesgård Museum Denmark, Museum of Natural History Paris, Musee du Louvre Paris, DR Denmark, TV2 Norway, Østre Gasværk theatre Copenhagen, Møntergaarden Museum DK, Toejhusmuseet Copenhagen, Cowi Consulting.*





**INTERNATIONAL SALES**

Distribution & Production  
Tel.: +45 70 27 42 41  
sales@brothers-sons.dk  
brothers-sons.dk

**SALES U.S.A.**

Tel.: 1-800-820-6610  
info@bbslighting.com  
bbslighting.com

**RENTAL SUPPORT**

Rental and Sales  
Tel.: +46 70 333 78 00  
info@bbsrentalsupport.com