

Light efficiency:



Light quality:



Color temperature:

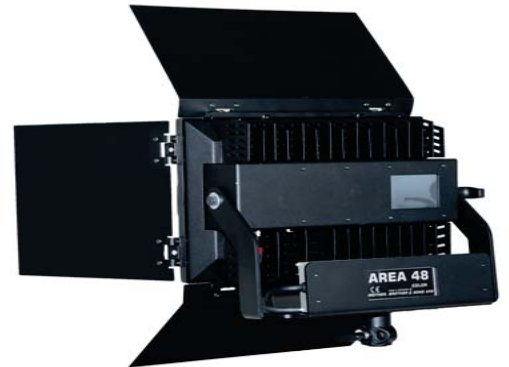


Output: 12006 lm

Peak: 4458 cd

Power: 139,9 W

PF: 0,91



Product name:

BB&S -AREA_48_COLOR_4300

Item number:

BB&S -AREA_48_COLOR

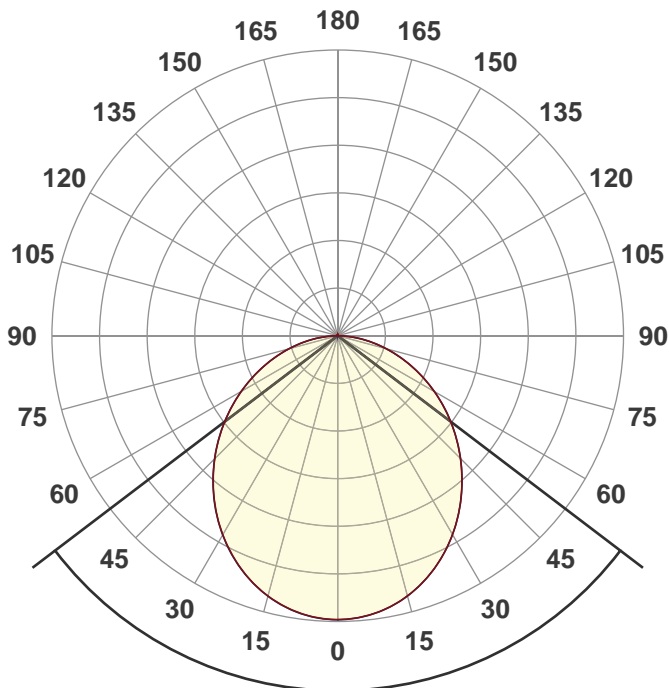
Date and time:

16-10-2018 14:43:01

Description:

Measured in 8 planes.

Measurement by Jakob D. Jepsen



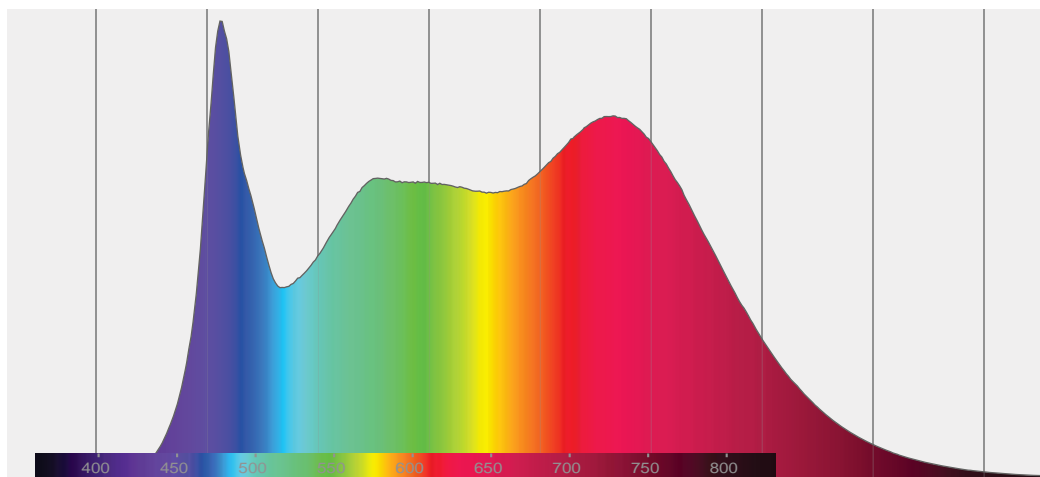
Beam angle

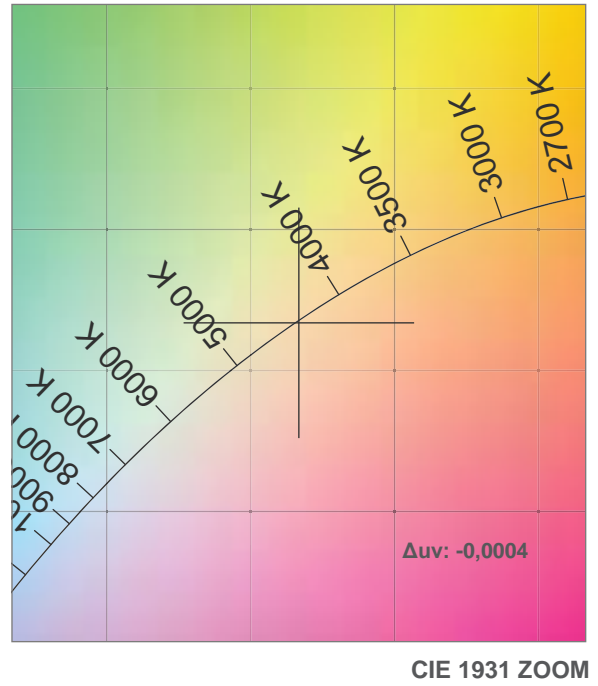
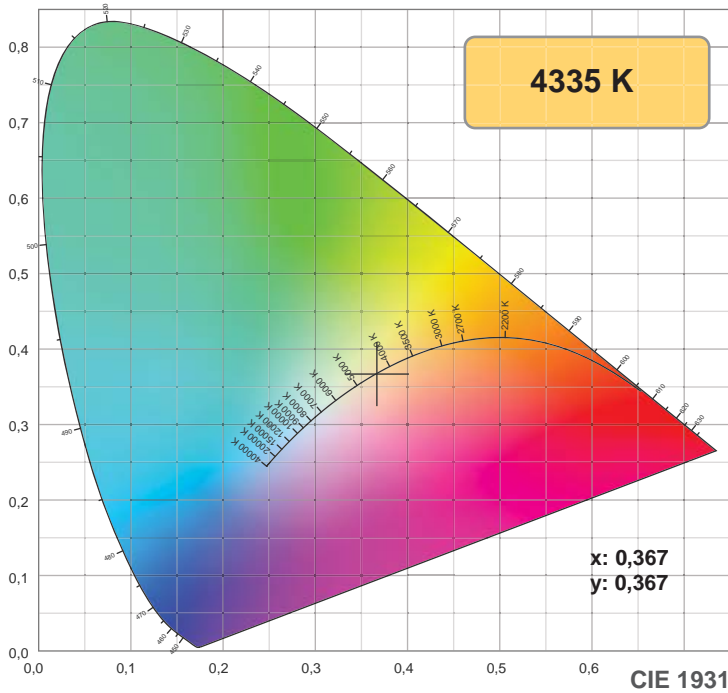
105,5°



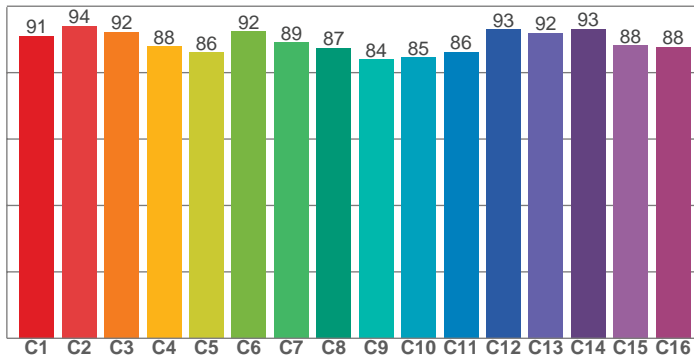
CIE 1931
x: 0,367
y: 0,367

Spectra

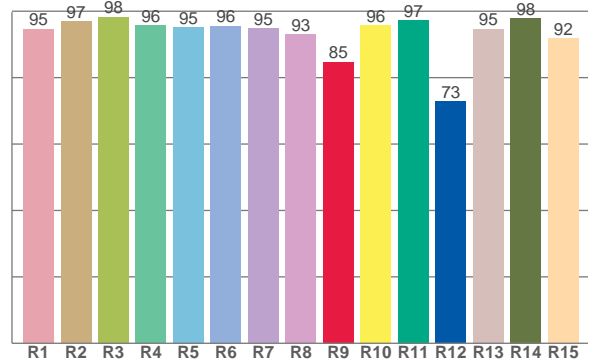




TM30: 88,9



CRI: 95,5 (R1-R8)



CRI R values, only R1-R8 are used to calculate final CRI value

R1	R2	R3	R4	R5	R6	R7	R8	R9	R10	R11	R12	R13	R14	R15
94,7	96,9	98,3	95,8	95,2	95,6	94,9	92,9	84,7	95,7	97,4	72,8	94,7	98,0	91,9

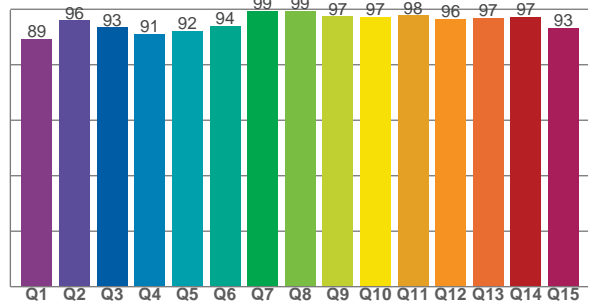
TM30 C values, 16 binned values out of total of 99 C values

C1	C2	C3	C4	C5	C6	C7	C8	C9	C10	C11	C12	C13	C14	C15	C16
91,1	94,0	92,3	87,8	86,1	92,5	89,1	87,4	84,0	84,5	86,2	93,1	91,9	93,2	88,3	87,7

CQS Q values

Q1	Q2	Q3	Q4	Q5	Q6	Q7	Q8	Q9	Q10	Q11	Q12	Q13	Q14	Q15
89,2	96,0	93,4	91,2	92,1	94,0	99,3	99,3	97,3	97,2	97,7	96,4	96,8	97,1	93,3

CQS: 94,5

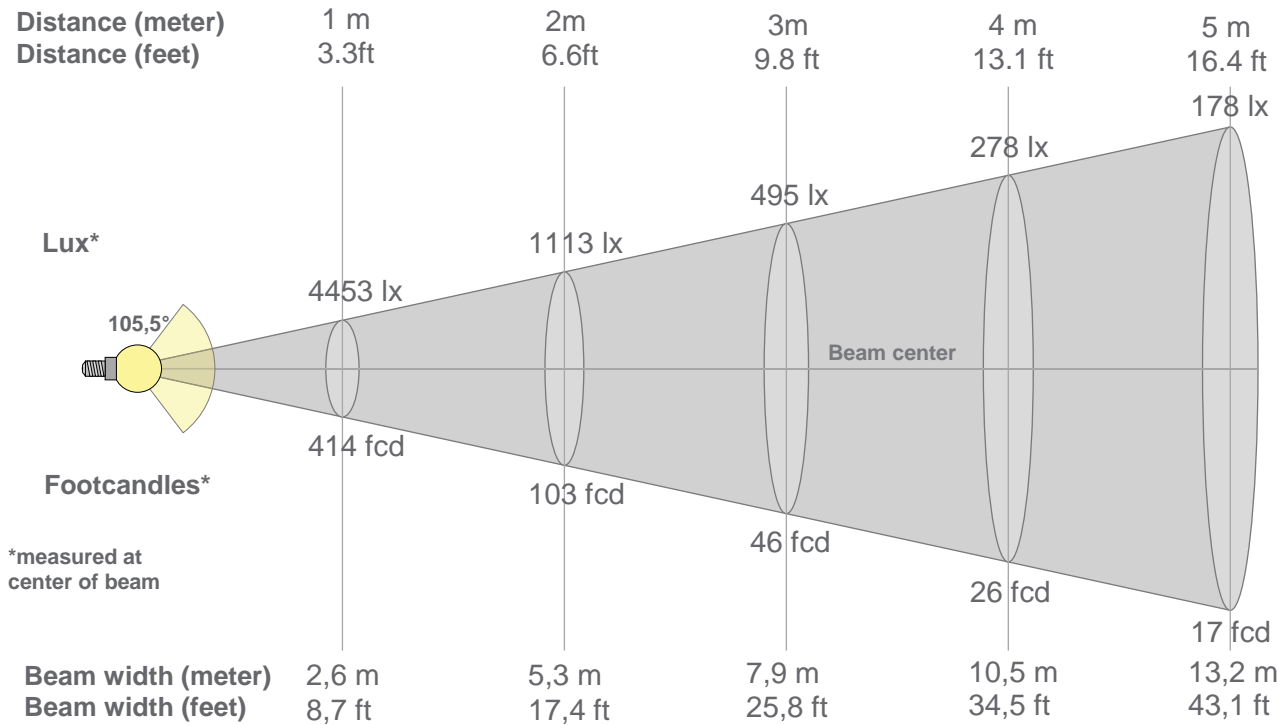


Color parameters

Color temperature	Color rendering index	Red component	Color fidelity	Color gamut	Color quality scale	Color coordinate cie 1931	Color coordinate cie 1931	Color coordinate	Color coordinate	Color deviation from black body
CCT	CRI	CRI R9	TM30 Rf	TM30 Rg	CQS	x	y	u	v	Δuv
4335 K	95,5	84,7	88,9	98,8	94,5	0,367	0,367	0,220	0,330	-0,0004



98 *Television Lighting Consistency Index.*



Beam intensities from 1-20m

1m	2m	3m	4m	5m	6m	7m	8m	9m	10m	11m	12m	13m	14m	15m	16m	17m	18m	19m	20m
3,3ft	6,6ft	9,8ft	13,1ft	16,4ft	19,7ft	23ft	26,2ft	29,5ft	32,8ft	36,1ft	39,4ft	42,7ft	45,9ft	49,2ft	52,5ft	55,8ft	59,1ft	62,3ft	65,6ft
4453lx	1113lx	495lx	278lx	178lx	124lx	91lx	70lx	55lx	45lx	37lx	31lx	26lx	23lx	20lx	17lx	15lx	14lx	12lx	11lx
413,7fcd	103,4fcd	46fcd	25,9fcd	16,5fcd	11,5fcd	8,4fcd	6,5fcd	5,1fcd	4,1fcd	3,4fcd	2,9fcd	2,4fcd	2,1fcd	1,8fcd	1,6fcd	1,4fcd	1,3fcd	1,1fcd	1fcd

Intensities in 0° c-plane

0°	5°	10°	15°	20°	25°	30°	35°	40°	45°	50°	55°	60°	65°	70°	75°	80°	85°	90°	95°
4453	4424	4348	4224	4055	3846	3602	3328	3032	2724	2404	2079	1751	1423	1105	798	508	240	33	3
100%	99%	98%	95%	91%	86%	81%	75%	68%	61%	54%	47%	39%	32%	25%	18%	11%	5%	1%	0%

Intensities in 90° c-plane

0°	5°	10°	15°	20°	25°	30°	35°	40°	45°	50°	55°	60°	65°	70°	75°	80°	85°	90°	95°
4453	4430	4354	4228	4056	3845	3601	3328	3034	2726	2408	2083	1752	1422	1098	786	493	228	49	3
100%	99%	98%	95%	91%	86%	81%	75%	68%	61%	54%	47%	39%	32%	25%	18%	11%	5%	1%	0%

Intensities in 180° c-plane

0°	5°	10°	15°	20°	25°	30°	35°	40°	45°	50°	55°	60°	65°	70°	75°	80°	85°	90°	95°
4453	4426	4350	4229	4060	3848	3604	3333	3038	2728	2406	2078	1748	1422	1104	799	509	241	45	3
100%	99%	98%	95%	91%	86%	81%	75%	68%	61%	54%	47%	39%	32%	25%	18%	11%	5%	1%	0%

Intensities in 270° c-plane

0°	5°	10°	15°	20°	25°	30°	35°	40°	45°	50°	55°	60°	65°	70°	75°	80°	85°	90°	95°
4453	4430	4353	4229	4059	3851	3609	3338	3044	2734	2411	2081	1749	1420	1100	792	503	236	48	4
100%	99%	98%	95%	91%	86%	81%	75%	68%	61%	54%	47%	39%	32%	25%	18%	11%	5%	1%	0%

Beam angle 50%	Field angle 10%	Cutoff angle 2,5%	Intensity ratio in 120° cone	Intensity ratio in 90° cone
105,5°	162,2°	175,5°	78,6%	54,4%