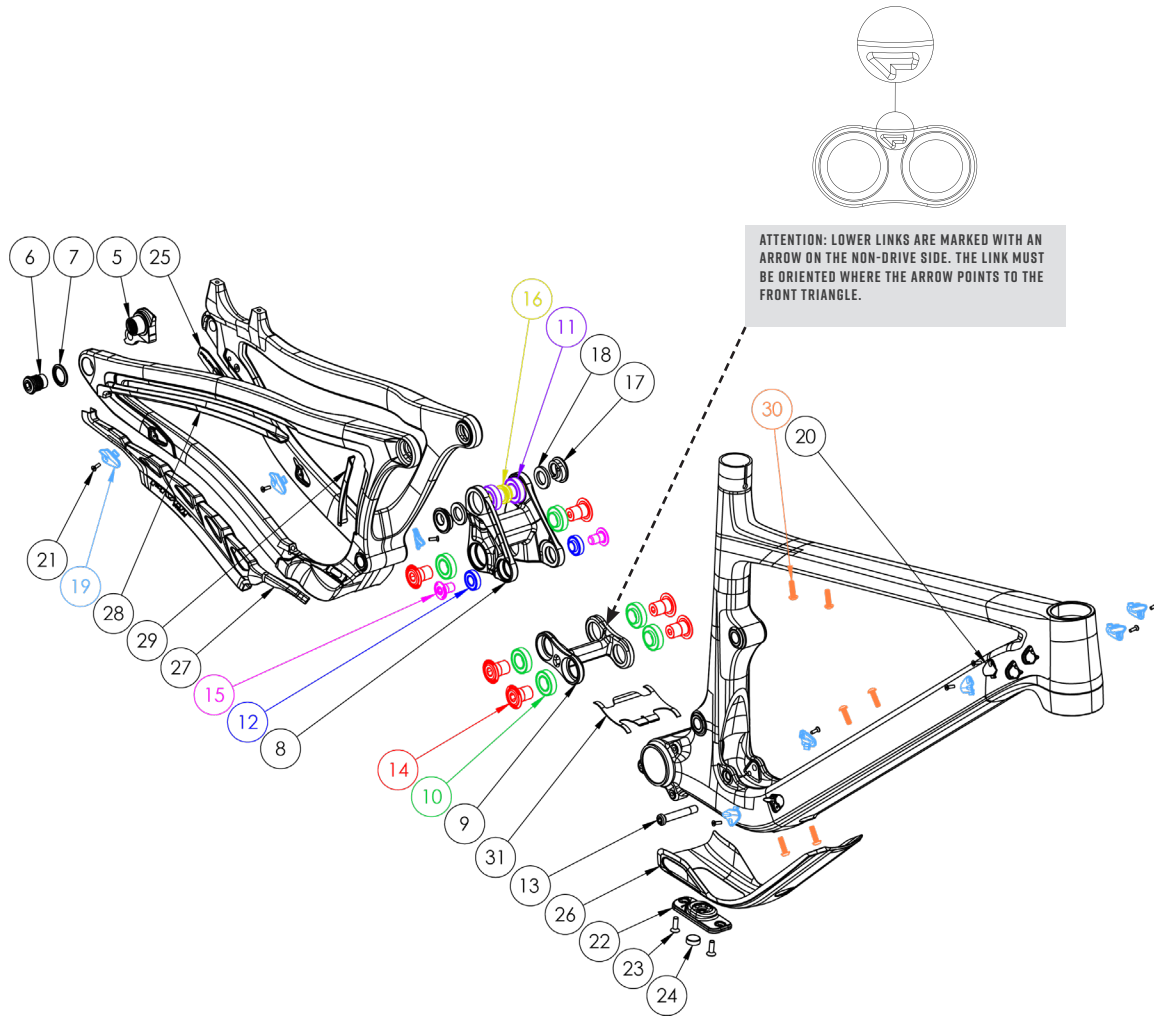


SWITCHBLADE V6



ATTENTION: LOWER LINKS ARE MARKED WITH AN ARROW ON THE NON-DRIVE SIDE. THE LINK MUST BE ORIENTED WHERE THE ARROW POINTS TO THE FRONT TRIANGLE.

HARDWARE				
NUMBER	PART NUMBER	DESCRIPTION	TORQUE	*
5	FP-UDH-TA-12MM-BLK-VI-RI	UNIVERSAL REAR DERAILLEUR HANGER		
6	-	UNIVERSAL REAR DERAILLEUR HANGER BOLT	25 NM (18 LB-FT)	
7	-	UNIVERSAL REAR DERAILLEUR HANGER WASHER		
8	FP-LNK-UL-66.7MM-VI-RI	66.7MM UPPER LINK		
9	FP-LNK-LL-45MM-V3-RI	45MM LOWER LINK V3		
10	FP-BRG-6902-LLUMAXECN	28MM 6902 EXTENDED MAX-E BEARING		R
11	FP-BRG-6902-LLUMAX	28MM 6902 STANDARD MAX BEARING		R
12	FP-BRG-6900-LLUMAXE	22MM 6900 EXT'D MAX-E BEARING		R
13	FP-BLT-M8*45.7-BLK-V2	M8 FRONT SHOCK BOLT FOR 30.1MM SHOCK SPACING	13 NM (10 LB-FT)	G / L
14	FP-BLT-M14*20-BLK-V2-R2	M14X20 LINK BOLT	35 NM (27 LB-FT)	L
15	FP-BLT-M10*16.5-BLK-VI	M10 TRUNNION MOUNT BOLT	13 NM (10 LB-FT)	L
16	FP-BLT-M14*20-BLK-V3-R2	M14X20 FLIP CHIP BOLT	35 NM (27 LB-FT)	L
17	FP-NUT-FLIPCHIP-4.6MM-VI	4.6MM FLIP CHIP		G
18	FP-WSH-SPC-151*250*3W	M14X3MM FLIP CHIP SPACER		G
19	FP-CLM-MECH-FRM-VI	INTERNAL ROUTING CABLE CLAMP		
20	FP-CVR-MECH-FRM-V2	INTERNAL ROUTING HOLE COVER		
21	FP-SCW-FLT-M3*10-BLK	CABLE PORT CLAMP SCREW BLACK		
22	FP-MNT-TOOL-BLK-VI-RI	TOPEAK TOOL MOUNT		
23	FP-SCW-FLT-M5*16	M5X16 TOPEAK TOOL MOUNT SCREWS		
24	FP-MNT-TLPLG-BLK-VI-RI	TOPEAK TOOL MOUNT PLUG		
25	FP-CVR-FLV-ACC-VI-RI	FOX LIVE ACCELEROMETER COVER		
26	FP-PRO-SBCV6-DT-XS-SM-VI-RI	SWITCHBLADE V6 DOWNTUBE PROTECTOR (XS/SM)		
26	FP-PRO-SBCV6-DT-M-L-XL-VI-RI	SWITCHBLADE V6 DOWNTUBE PROTECTOR (MD/LG/XL)		
27	FP-PRO-SBCV5-CS-VI-RI	SWITCHBLADE V5 CHAINSTAY PROTECTOR		
28	FP-PRO-SBCV5-SS-VI-RI	SWITCHBLADE V5 SEATSTAY PROTECTOR		
29	FP-PRO-SBCV5-UR-VI-RI	SWITCHBLADE V5 UPRIGHT PROTECTOR		
30	PIVOT WB BOLTS V2	M5X0.8X18 ZINC PLATED STEEL WATER BOTTLE BOLTS		
31	FP-PRO-45MM-EXT-LL-VI-RI	45MM OUT TO OUT EXTENDED LOWER LINK PROTECTOR		
32	FRAME SIZE STICKER - XS/SM/MD/LG/XL	FRAME SIZE STICKER		
AXLES				
NUMBER	PART NUMBER	DESCRIPTION	TORQUE	*
101	I57MM THROUGH AXLE V5	I57MM UDH REAR AXLE	15 NM (11 LB-FT)	G
102	-	I2MM AXLE WASHER (INCLUDED W/ AXLE)		G



BIKE CARE			
*	PRODUCT TYPE	RECOMMENDED PRODUCT	
G	GREASE	MOTOREX BIKE GREASE 2000	
L	THREAD LOCKER**	LOCTITE THREAD LOCKER #243 (OR EQUIVALENT)	
G/L	GREASE (BOLT SHAFT) / THREAD LOCKER (BOLT THREADS)	SEE ABOVE	
A	ANTI-SEIZE	MOTOREX COPPER PASTE	
R	RETAINING COMPOUND	LOCTITE RETAINING COMPOUND #620 (OR EQUIVALENT)	

**THREADLOCKER SHOULD ALWAYS BE APPLIED TO THE CORRESPONDING FEMALE THREADS FOR THE BOLT SPECIFIED