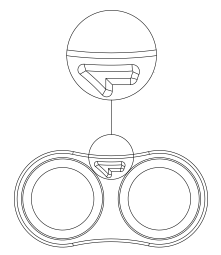
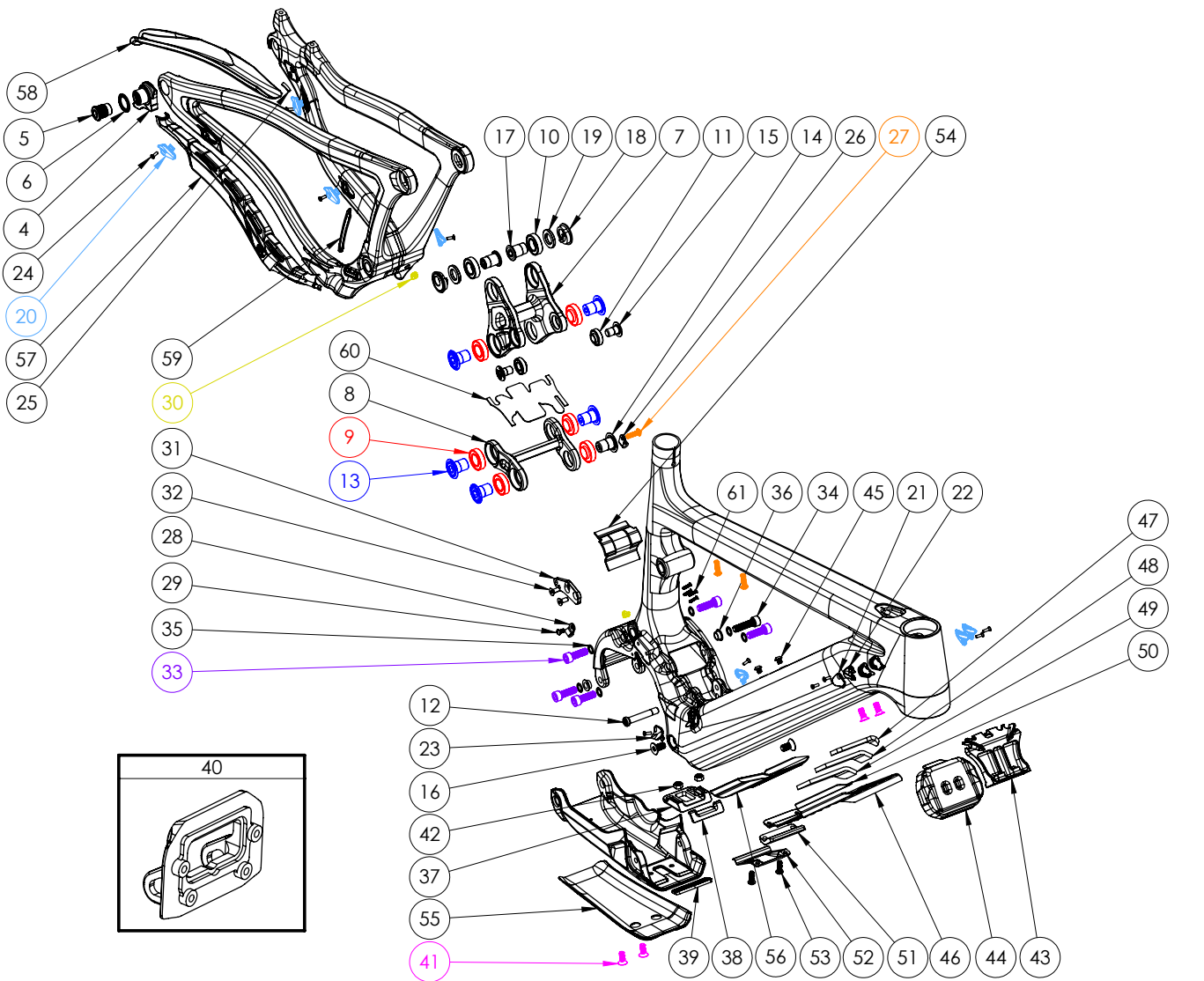


SHUTTLE LT				
Hardware				
NUMBER	PART NUMBER	DESCRIPTION	TORQUE	*
4	FP-UDH-TA-12MM-BLK-V1-R1	Universal Rear Derailleur Hanger		
5	-	Universal Rear Derailleur Hanger Bolt	25 Nm (18 lb·ft)	
6	-	Universal Rear Derailleur Hanger Washer		
7	FP-LNK-UL-84MM-V1-R1	84mm Upper Link		
8	FP-LNK-LL-50MM-V2-R1	50mm Out-to-Out Lower Link V2		
9	FP-BRG-6902-LLUMAXECN	28mm 6902 Extended Max-E Bearing		R
10	FP-BRG-6902-LLUMAX	28mm 6902 Standard Max Bearing		R
11	FP-BRG-6900-LLUMAXE	22mm 6900 Ext'd Max-E Bearing		R
12	FP-BLT-M8*45.7-BLK-V2	M8 Front Shock Bolt for 30.1mm Shock Spacing	13 Nm (10 lb·ft)	G / L
13	FP-BLT-M14*20-BLK-V2-R2	M14x20 Link Bolt	35 Nm (27 lb·ft)	L
14	FP-BLT-M14*20-BLK-V4-R1	M14x20 Link Bolt w/ Internal Threads	35 Nm (27 lb·ft)	L
15	FP-BLT-M10*16.5-BLK-V1	M10 Trunnion Mount Bolt	13 Nm (10 lb·ft)	L
16	FP-SCW-FLT-M8*16	M8x16 Flat Head Bolts for Skid Plate	13 Nm (10 lb·ft)	G / L
17	FP-BLT-M14*20-BLK-V3-R2	M14x20 Flip Chip Bolt	35 Nm (27 lb·ft)	L
18	FP-NUT-FLIPCHIP-4.6MM-V1	4.6mm Flip Chip		G
19	FP-WSH-SPC-15I*250*3W	M14x3mm Flip Chip Spacer		G
20	FP-CLM-MECH-FRM-V1	Internal Routing Cable Clamp		
21	FP-CVR-MECH-FRM-V2	Internal Routing Hole Cover		
22	FP-CLM-DUAL-FRM-V1	Internal Routing Dual Clamp		
23	FP-CLM-MECH-FRM-V2	Internal Routing Cable Clamp (Mirrored)		
24	FP-SCW-FLT-M3*10	M3x10 Cable Clamp Screw (Included w/ Clamp)		
25	FP-CLM-DI2-SLV-BLK-V1	DI2 Wire Sleeve for Cable Clamps		
26	FP-CLM-ADEL-5MM-V1-R1	5mm Adel Clamp for Rear Brake		
27	PIVOT WB BOLTS V2	M5 Adel Clamp Bolt / Top Tube Tool Bolts		
28	FP-CLM-ADEL-4MM-V1-R1	4mm Adel Clamp for RD Cable		
29	FP-SCW-BTN-M4*8-V1-R1	M4x8 Adel Clamp Mounting Bolt		
30	FP-GDE-DI2-7*8*2.5*2.5	7x8mm DI2 Wire Guide		
31	FP-MNT-CG-V3	Chain Guide Mounting Plate		
32	FP-SCW-FLT-M5*12	M5x12 CG Mounting Screw	5 Nm (4 lb·ft)	L
33	FP-SCW-SCK-M8*25-V1-R1	M8x25 Motor Mounting Screw	13 Nm (10 lb·ft)	L
34	FP-SCW-SCK-M8*30-R1	M8x30 Motor Mounting Screw	13 Nm (10 lb·ft)	L
35	FP-WSH-8I*120*1W	M8 Motor Mount Bolt Washer		
36	FP-WSH-SKIDPLT-V1-R1	M8 Bushing for Rear Skid Plate bolts		G
37	FP-SPC-SKIDPLT-WEDGE-V1-R1	Skid Plate Wedge		
38	FP-PRO-SKIDPLT-WEDGE-V1-R1	Skid Plate Wedge Rubber		
39	FP-GDE-BATT-LOWER-V1-R1	Lower Battery Support		
40	FP-MNT-WIRE-PLATE-V1-R1	Wire Connector Custom Backing Plate		
41	FP-BLT-FLT-M6*16-V1-R1	M6x16 Skid Plate Wedge / Front Bracket mounting bolts	8Nm (5.9lb-ft)	G / L
42	FP-NUT-M6-NYLOC-V1-R1	M6 Nylon Locking Nuts		
43	FP-MNT-FRNT-BATT-V3-R1	Front Battery Bracket		
44	FP-MNT-LATCH-BATT-V1-R1	Front Battery Catch		
45	FP-BLT-BTN-M5*6-V1-R1	M5x6 DT Water Bottle Bolts	3 Nm (26 in·lb)	L
46	FP-GDE-WIRE-PLATE-V1-R1	Wire Routing Plate		
47	FP-PRO-FOAM-87*21-V1-R1	Wire Routing Plate Foam (70x21)		
48	FP-PRO-FOAM-87*32-V1-R1	Wire Routing Plate Foam (70x32)		
49	FP-PRO-FOAM-87*40-V1-R1	Wire Routing Plate Foam (70x40)		
50	FP-PRO-PLATE-STRIP-V1-R1	Wire Routing Plate Rubber Strip		
51	FP-GDE-WIRE-BASE-V1-R1	Wire Routing Plate Rubber Base		
52	FP-GDE-WIRE-SHIELD-V1-R1	Wire Shield		
53	FP-SCW-BTN-M5*16-V1-R1	M5x16 Wire Routing Plate Mounting Screw	3 Nm (26 in·lb)	L
54	FP-CVR-MOTOR-FRONT-V1-R1	Front Motor Mount Cover		
55	FP-PRO-SHTV5-SKD-V1-R1	SHTLv5 Skid Plate Protector		
56	FP-PRO-SHTV5-DT-V1-R1	SHTLv5 Downtube Protector		
57	FP-PRO-SHTV5-CS-V1-R1	SHTLv5 Chainstay Protector		
58	FP-PRO-SHTV5-SS-V1-R1	SHTLv5 Seatstay Protector		
59	FP-PRO-SHTV5-UR-V1-R1	SHTLv5 Upright Protector		
60	FP-PRO-LL-50MM-V2-R1	Lower Link Protector		
61	FP-BLT-FLT-M2.5*8-V1-R1	M2.5x8 Flat Head Charging Port Mounting Bolts		
62	FRAME SIZE STICKER - XS/SM/MD/LG/XL	Frame Size Sticker		
Axles				
NUMBER	PART NUMBER	DESCRIPTION	TORQUE	*
101	157MM THROUGH AXLE V5	157mm UDH Rear Axle	15 Nm (11 lb·ft)	G
102	-	12mm Axle Washer (Included w/ Axle)		
Bike Care				
*	PRODUCT TYPE	RECOMMENDED PRODUCT		
G	Grease	Motorex Bike Grease 2000		
L	Thread Locker**	Loctite Thread Locker #243 (or equivalent)		
G/L	Grease (Bolt Head/Shaft) / Thread locker (Bolt Threads)	See Above		
A	Anti-Seize	Motorex Copper Paste		
R	Retaining Compound	Loctite Retaining Compound #620 (or equivalent)		

**Threadlocker should always be applied to the corresponding female threads for the bolt specified





ATTENTION: Lower links are marked with an arrow on the non-drive side. The link must be oriented where the arrow points to the front triangle.