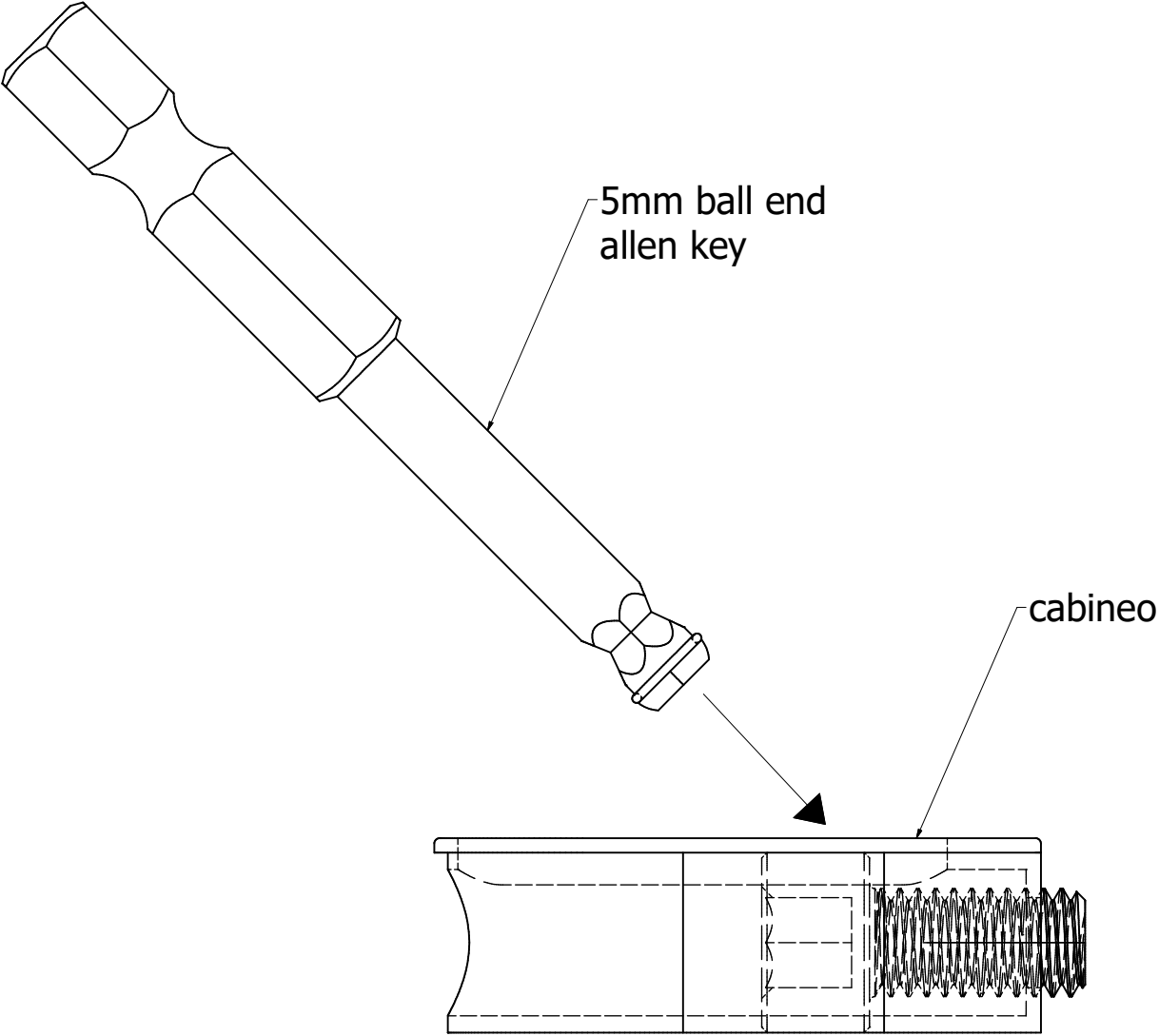
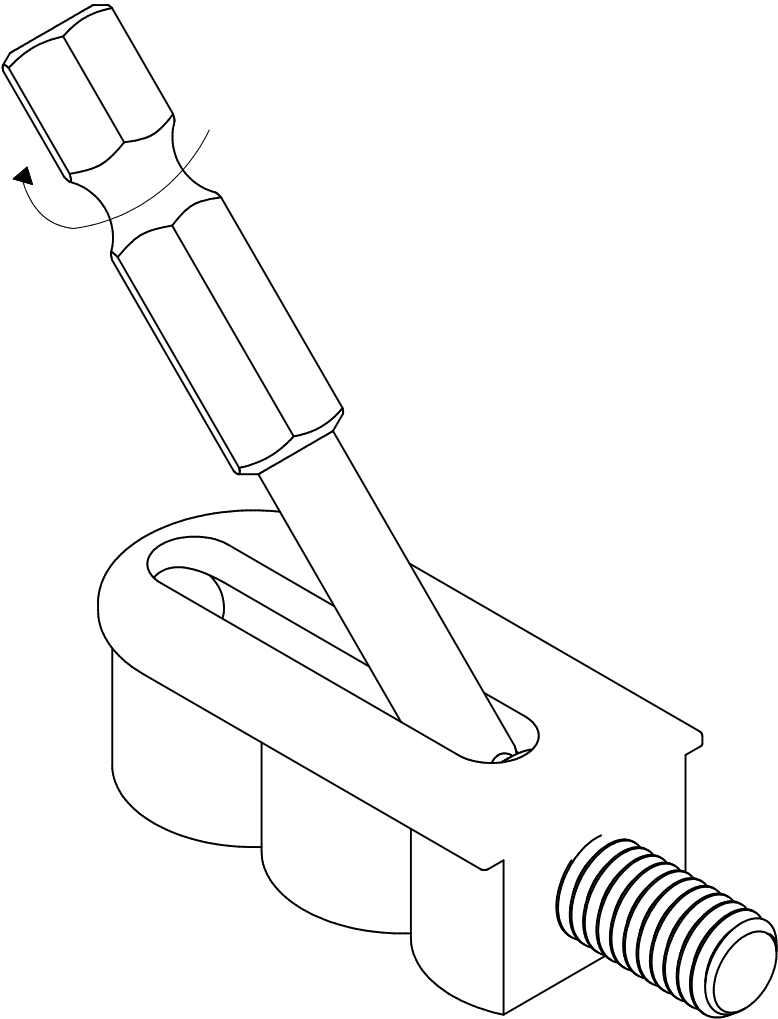


CABINEO ENGAGEMENT INSTRUCTIONS
(DO NOT ENGAGE CABINEOS PRIOR TO ATTACHING PANELS)

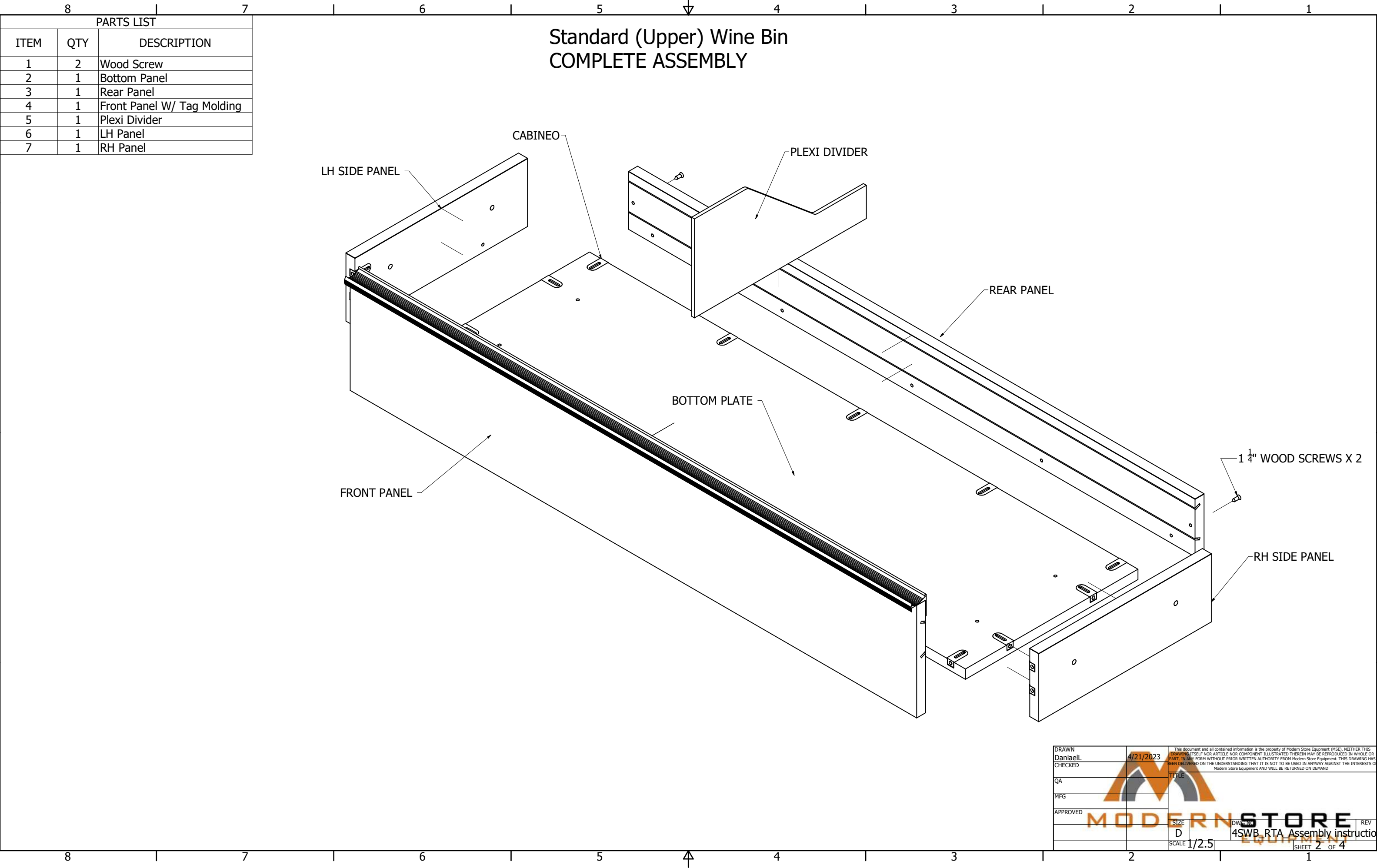
STEP 1: Insert provided 5mm allen-key into cabineo.





STEP 2: Tighten cabineo by turning bolt clock-wise.
USE CARE NOT TO OVER TIGHTEN



DRAWN	DaniaelL	4/21/2023	This document and all contained information is the property of Modern Store Equipment (MSE). NEITHER THIS DRAWING ITSELF NOR ARTICLE NOR COMPONENT ILLUSTRATED THEREIN MAY BE REPRODUCED IN WHOLE OR PART, IN ANY FORM WITHOUT PRIOR WRITTEN AUTHORITY FROM Modern Store Equipment. THIS DRAWING HAS BEEN DELIVERED ON THE UNDERSTANDING THAT IT IS NOT TO BE USED IN ANYWAY AGAINST THE INTERESTS OF Modern Store Equipment AND WILL BE RETURNED ON DEMAND.	
CHECKED			TITLE	
QA				
MFG				
APPROVED				
		SIZE	D	DWG NO.
		SCALE	5	4SWB_RTA Assembly instructions
				REV
				SHEET 1 OF 4

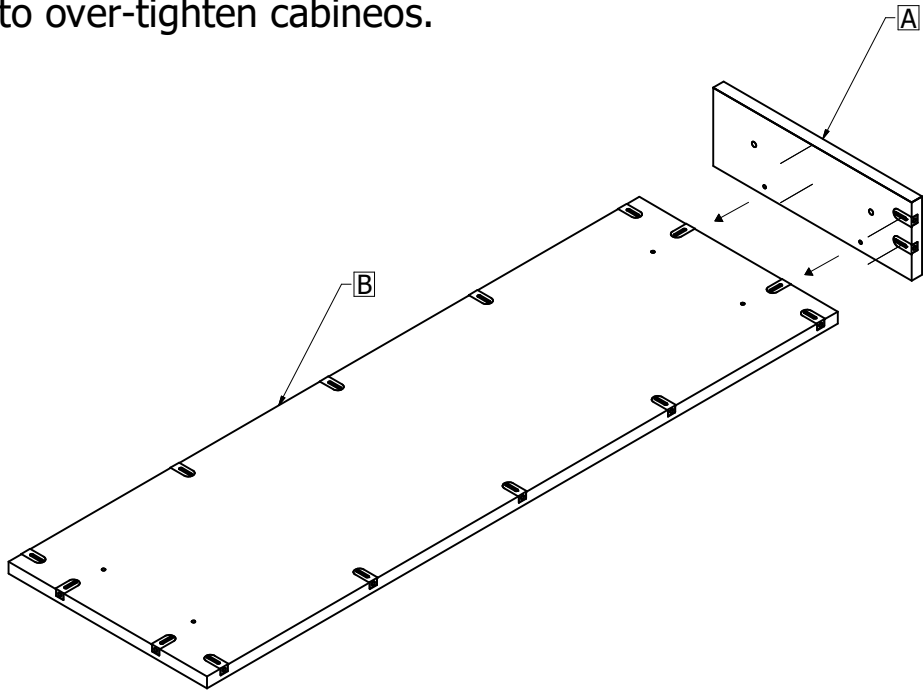


PARTS LIST		
ITEM	QTY	DESCRIPTION
1	2	Wood Screw
2	1	Bottom Panel
3	1	Rear Panel
4	1	Front Panel W/ Tag Molding
5	1	Plexi Divider
6	1	LH Panel
7	1	RH Panel

DRAWN	4/21/2023		This document and all contained information is the property of Modern Store Equipment (MSE). NEITHER THIS DRAWING ITSELF NOR ARTICLE NOR COMPONENT ILLUSTRATED THEREIN MAY BE REPRODUCED IN WHOLE OR PART, IN ANY FORM WITHOUT PRIOR WRITTEN AUTHORITY FROM Modern Store Equipment. THIS DRAWING HAS BEEN DELIVERED ON THE UNDERSTANDING THAT IT IS NOT TO BE USED IN ANYWAY AGAINST THE INTERESTS OF Modern Store Equipment AND WILL BE RETURNED ON DEMAND.	
DaniaelL			TITLE	
CHECKED				
QA				
MFG				
APPROVED				
		SIZE	DWG NO	REV
		D	4SWB RTA Assembly instructions	
		SCALE	EQUIPMENT	
		1/2.5	SHEET 2 OF 4	

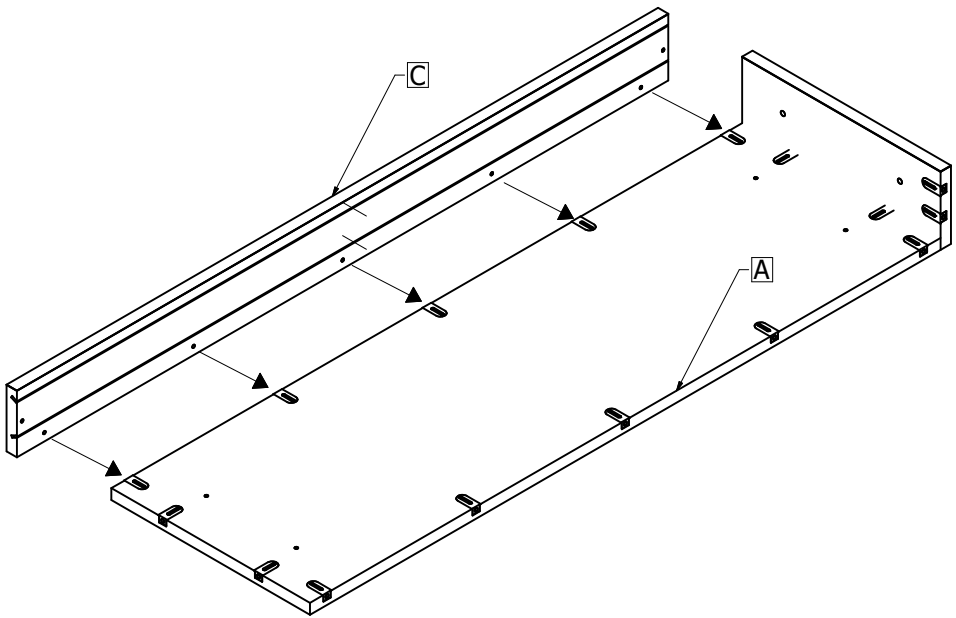
STEP 1:

Attach RH panel (A) by aligning pre-drilled holes with cabineos in bottom plate (B) and tighten. Use care not to over-tighten cabineos.



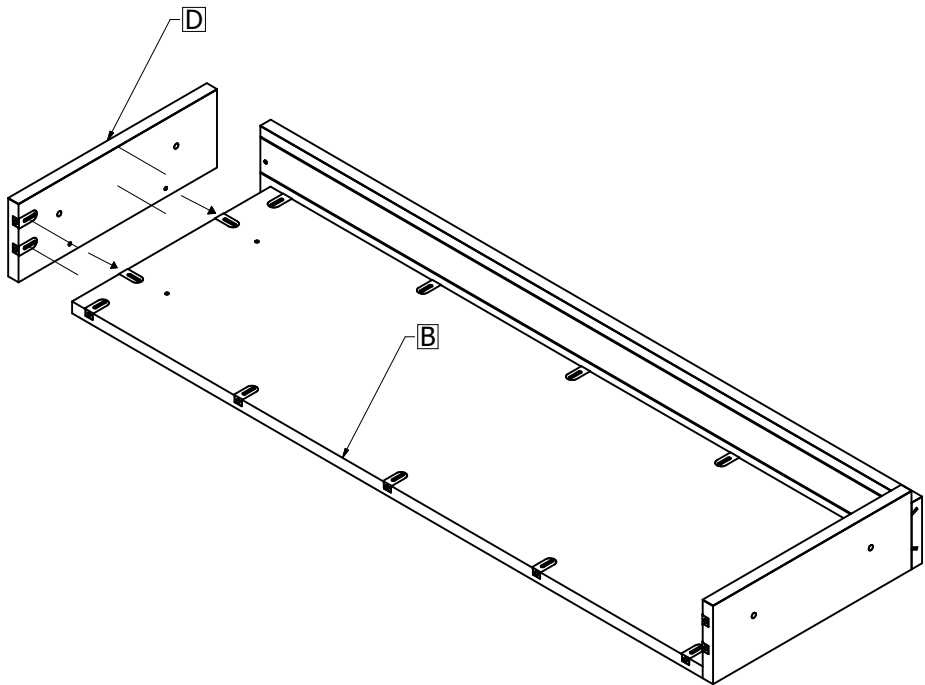
STEP 2:

Attach rear panel (C) by aligning pre-drilled holes with cabineos in bottom plate (B) and tighten. Use care not to over-tighten cabineos.



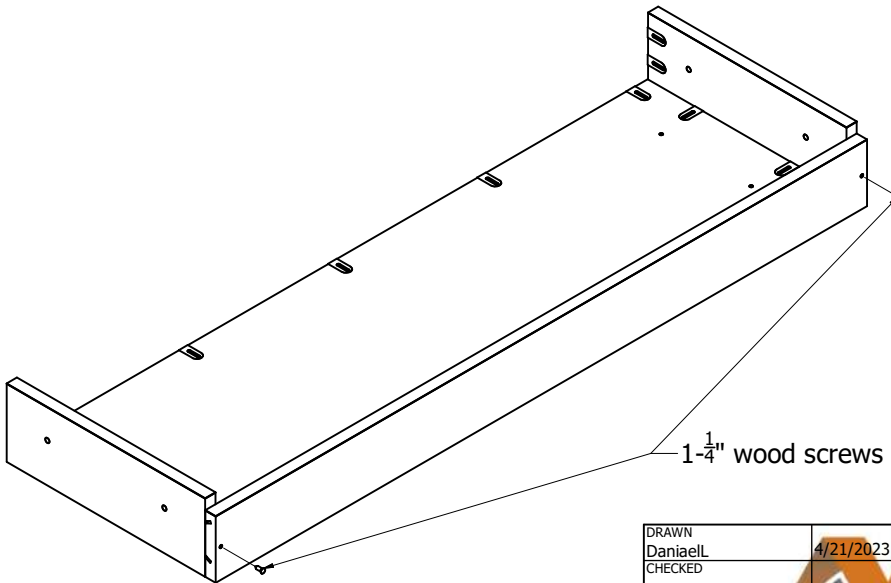
STEP 3:

Attach LH panel (D) by aligning pre-drilled holes with cabineos in bottom plate (B) and tighten. Use care not to over-tighten cabineos.



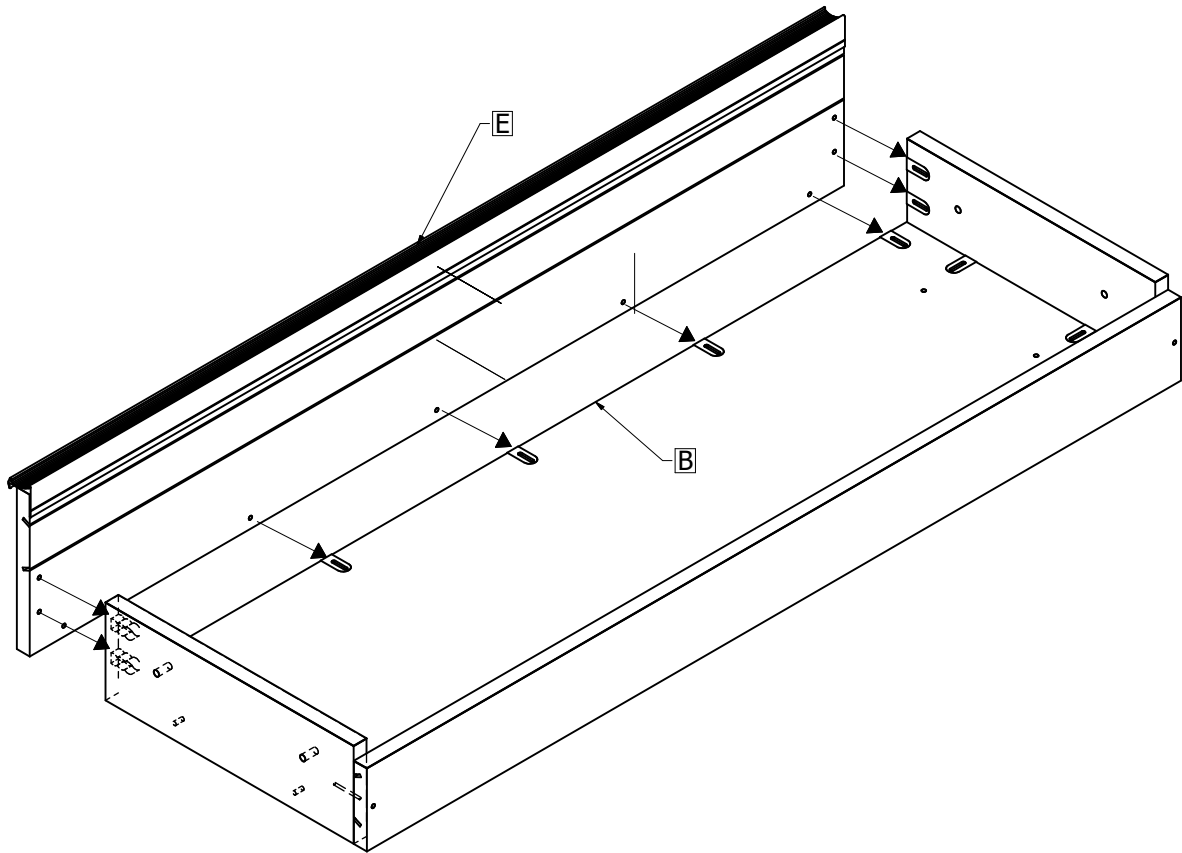
STEP 4:

Secure rear panel by inserting provided 1- $\frac{1}{4}$ " wood screws.

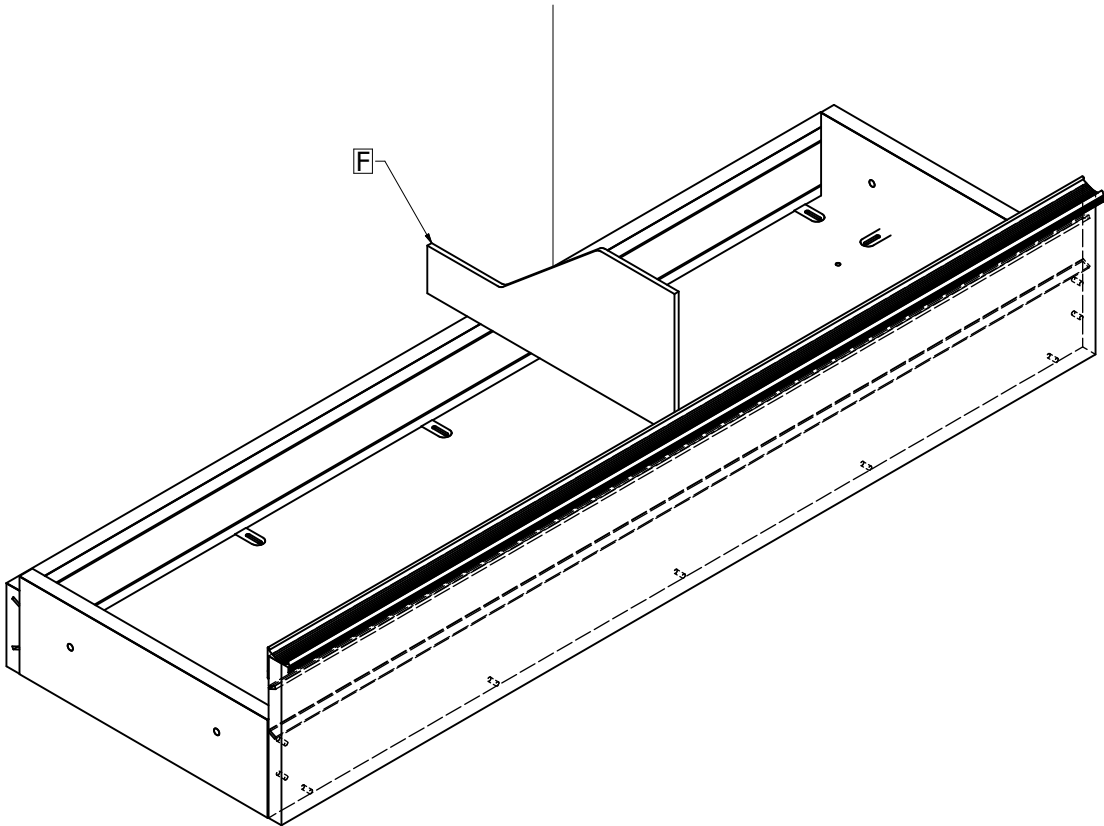


DRAWN	DaniaelL	4/21/2023	This document and all contained information is the property of Modern Store Equipment (MSE). NEITHER THIS DRAWING ITSELF NOR ARTICLE NOR COMPONENT ILLUSTRATED THEREIN MAY BE REPRODUCED IN WHOLE OR PART, IN ANY FORM WITHOUT PRIOR WRITTEN AUTHORITY FROM Modern Store Equipment. THIS DRAWING HAS BEEN DELIVERED ON THE UNDERSTANDING THAT IT IS NOT TO BE USED IN ANYWAY AGAINST THE INTERESTS OF Modern Store Equipment AND WILL BE RETURNED ON DEMAND.	
CHECKED			TITLE	
QA				
MFG				
APPROVED				
SIZE		D	DWG NO	
SCALE		1 / 5	REV	
			4SWB RTA Assembly instructions	
			SHEET 3 OF 4	

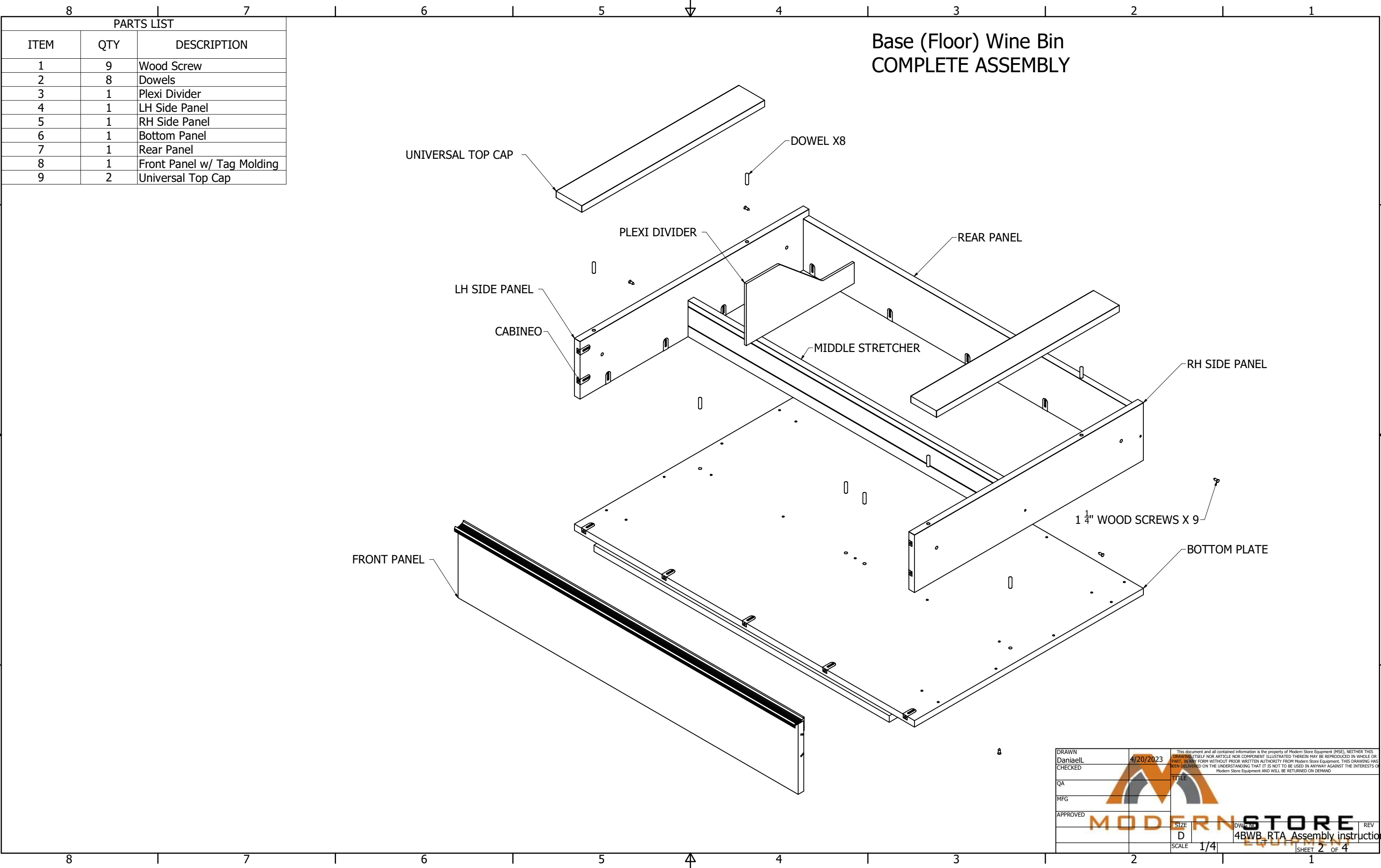
STEP 5: Attach front panel (E) by aligning predrilled holes with cabineos in bottom plate (B) and side panels and tighten. Use care not to over-tighten cabineos.



STEP 6: Insert bin divider (F).



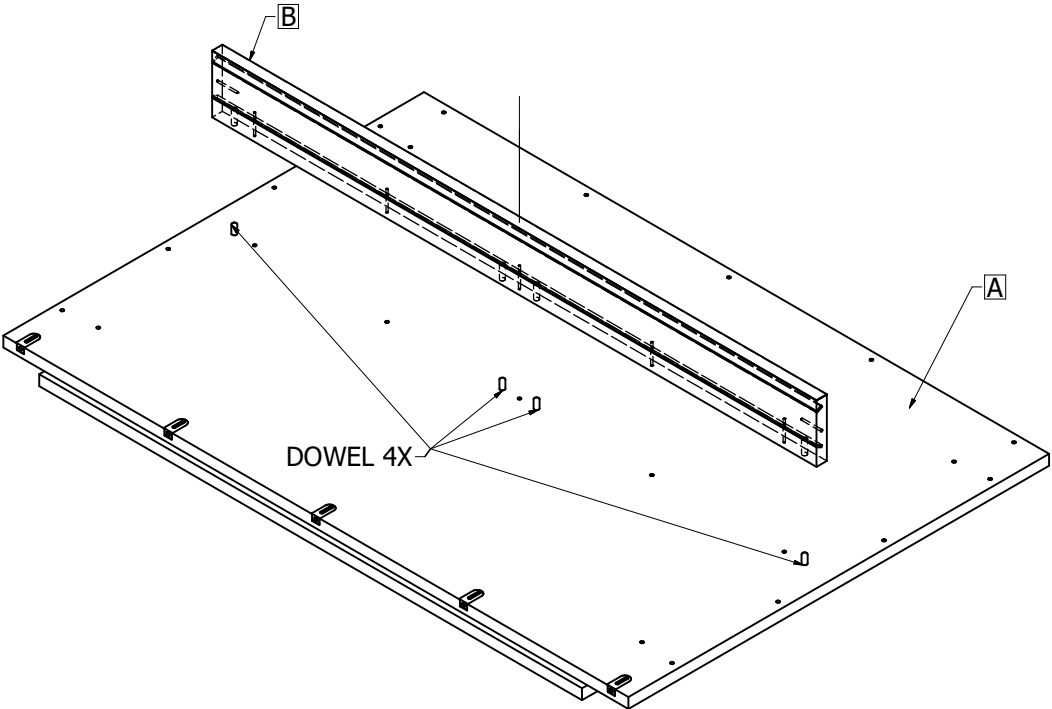
DRAWN	4/21/2023		This document and all contained information is the property of Modern Store Equipment (MSE). NEITHER THIS DRAWING ITSELF NOR ARTICLE NOR COMPONENT ILLUSTRATED THEREIN MAY BE REPRODUCED IN WHOLE OR PART, IN ANY FORM WITHOUT PRIOR WRITTEN AUTHORITY FROM Modern Store Equipment. THIS DRAWING HAS BEEN DELIVERED ON THE UNDERSTANDING THAT IT IS NOT TO BE USED IN ANYWAY AGAINST THE INTERESTS OF Modern Store Equipment AND WILL BE RETURNED ON DEMAND.	
DaniaelL				
CHECKED			TITLE	
QA				
MFG				
APPROVED				
		SIZE	DWG NO.	REV
		D	4SWB_RTA Assembly instructions	
		SCALE	1 / 4	SHEET 4 OF 4



DRAWN DanielL	4/20/2023	This document and all contained information is the property of Modern Store Equipment (MSE). NEITHER THIS DRAWING ITSELF NOR ARTICLE NOR COMPONENT ILLUSTRATED THEREIN MAY BE REPRODUCED IN WHOLE OR PART, IN ANY FORM WITHOUT PRIOR WRITTEN AUTHORITY FROM Modern Store Equipment. THIS DRAWING HAS BEEN DELIVERED ON THE UNDERSTANDING THAT IT IS NOT TO BE USED IN ANYWAY AGAINST THE INTERESTS OF Modern Store Equipment AND WILL BE RETURNED ON DEMAND.	
CHECKED		TITLE	
QA			
MFG			
APPROVED			
SIZE D		DRAWING 4BWB RTA Assembly instructions	
SCALE 1/4"		REV SHEET 2 OF 4	

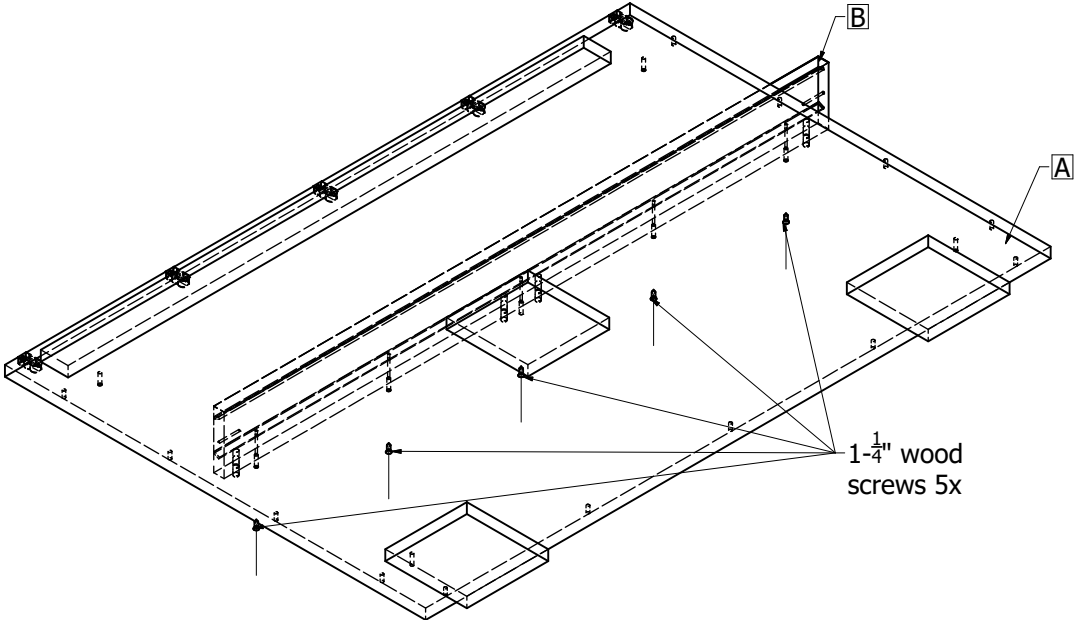
MODERN STORE EQUIPMENT

STEP 1: Insert 4x dowels into bottom plate (A) then attach center panel (B) onto dowels.



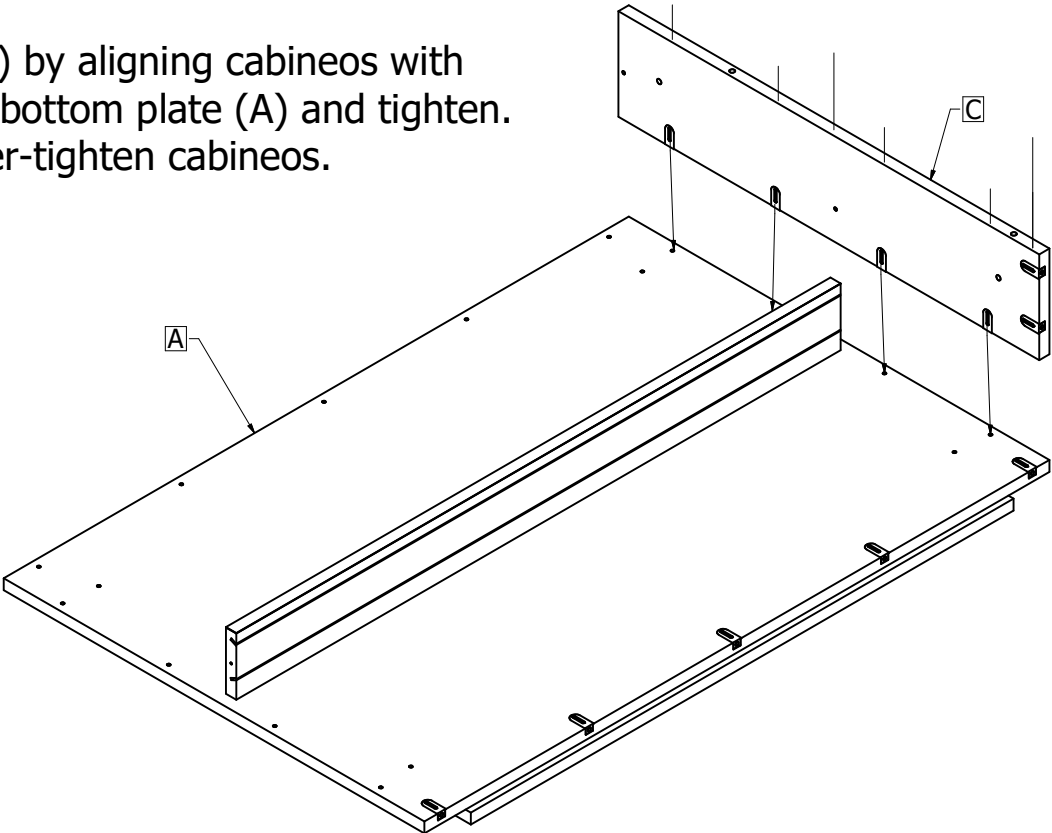
TOP VIEW

STEP 2: Insert 1-1/4" wood screws (5x) into bottom plate (A) through the bottom, into the center panel (B) to secure



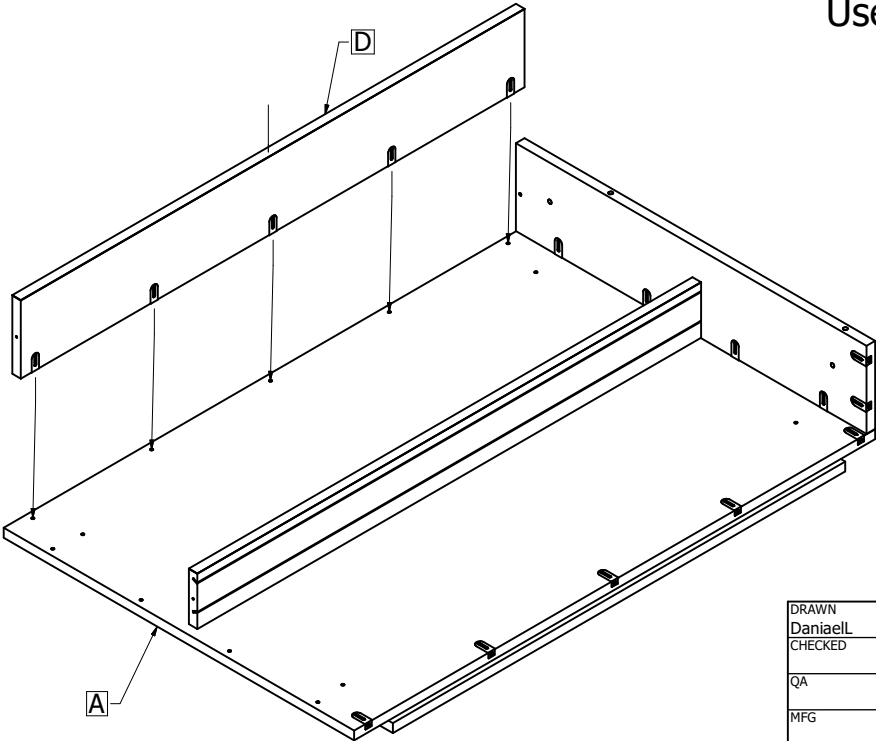
BOTTOM VIEW

STEP 3:
Attach RH panel (C) by aligning cabineos with pre-drilled holes in bottom plate (A) and tighten. Use care not to over-tighten cabineos.



TOP VIEW

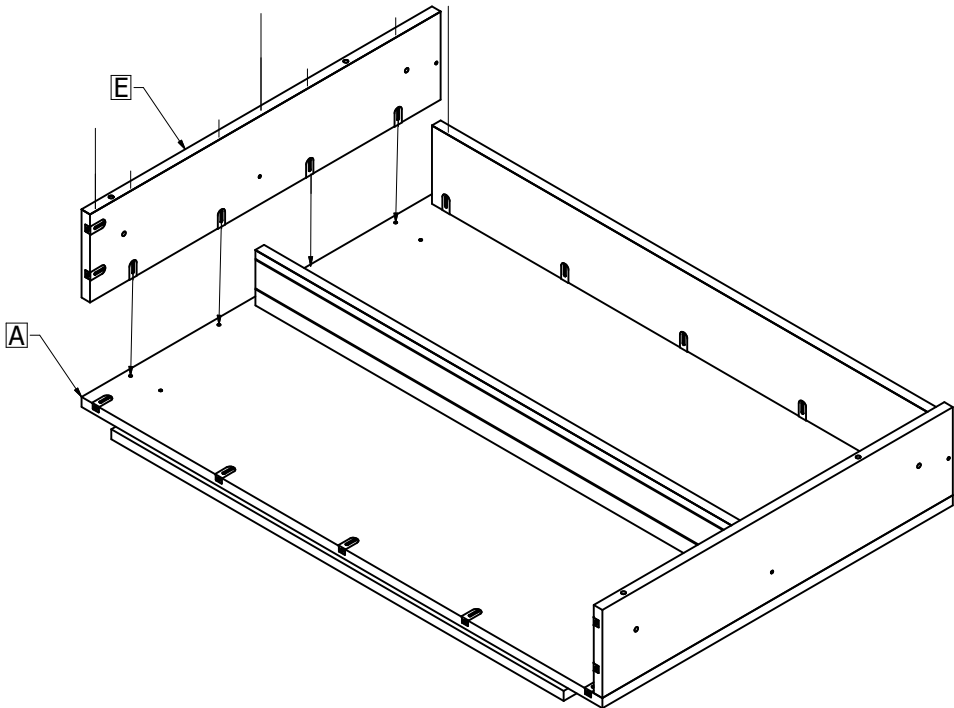
STEP 4: Attach rear panel (D) by aligning cabineos with pre-drilled holes in bottom plate (A) and tighten. Use care not to over-tighten cabineos.



TOP VIEW

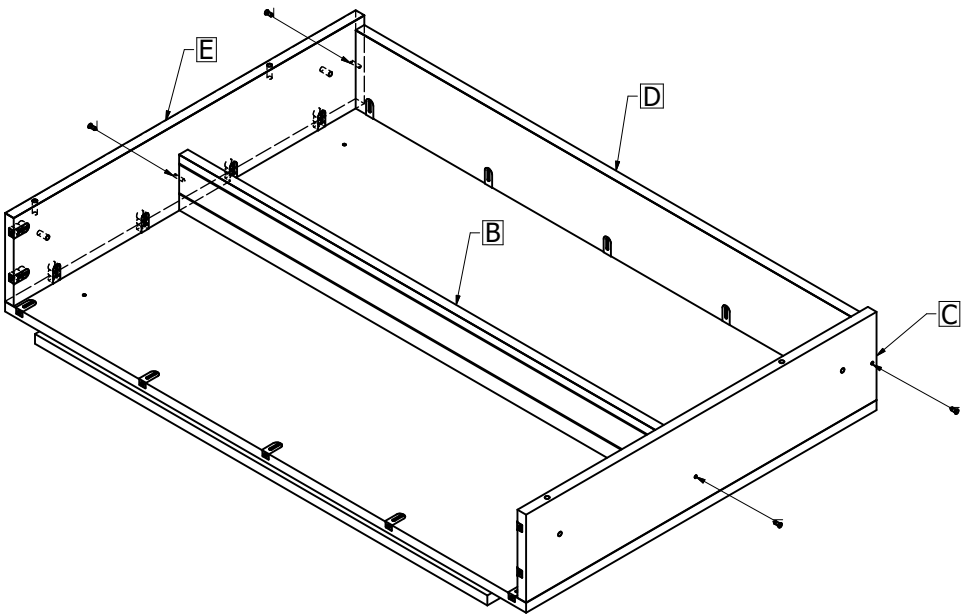
DRAWN	DaniaelL	4/20/2023	This document and all contained information is the property of Modern Store Equipment (MSE). NEITHER THIS DRAWING ITSELF NOR ARTICLE NOR COMPONENT ILLUSTRATED THEREIN MAY BE REPRODUCED IN WHOLE OR PART, IN ANY FORM WITHOUT PRIOR WRITTEN AUTHORITY FROM Modern Store Equipment. THIS DRAWING HAS BEEN DELIVERED ON THE UNDERSTANDING THAT IT IS NOT TO BE USED IN ANYWAY AGAINST THE INTERESTS OF Modern Store Equipment AND WILL BE RETURNED ON DEMAND.	
CHECKED			TITLE	
QA				
MFG				
APPROVED				
SIZE	D	DWG NO.	4BWB RTA Assembly instructions	REV
SCALE	1 / 5	SHEET	3 OF 4	

STEP 5: Attach LH panel (E) by aligning cabineos with pre-drilled holes in bottom plate (A) and tighten. Use care not to over-tighten cabineos.



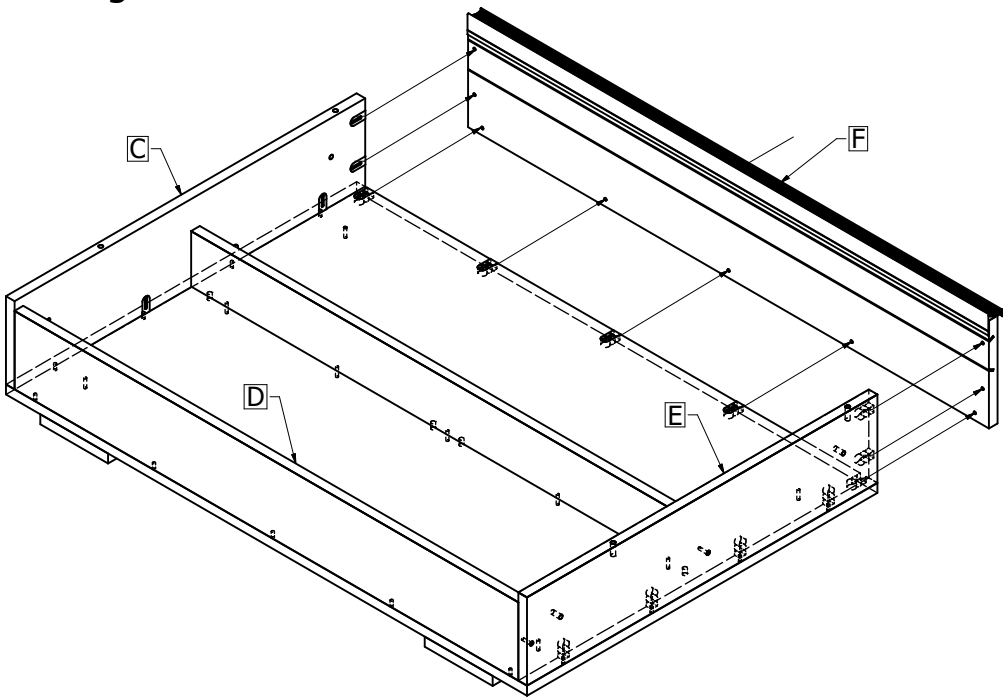
TOP VIEW

STEP 6: Insert 1- $\frac{1}{4}$ " wood screws (4x) through LH (E) & RH panels (C) into the center panel (B) and rear panel (D) to secure.



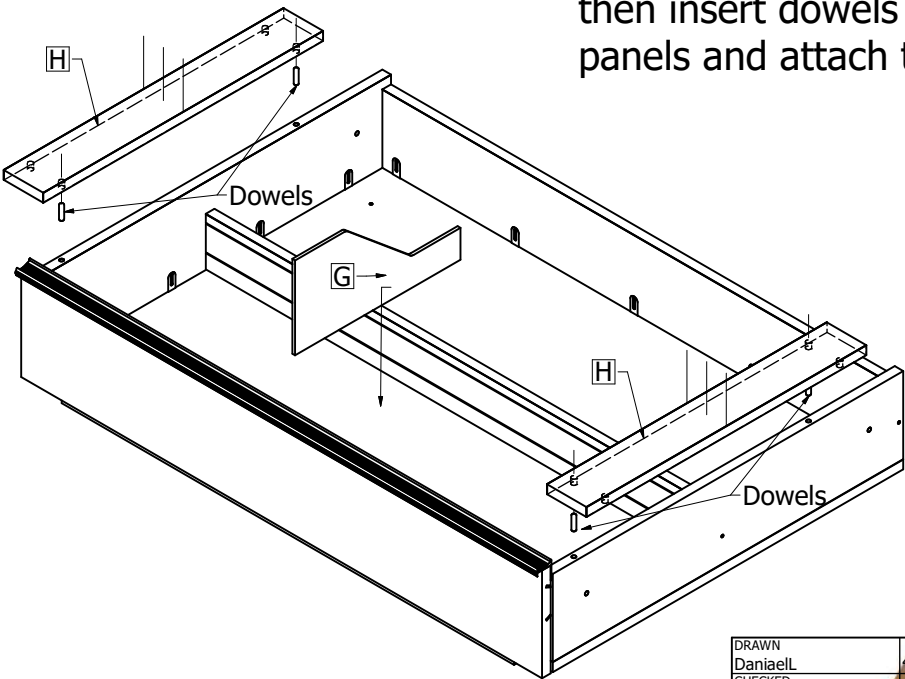
BOTTOM VIEW

STEP 7: Attach front panel (F) by aligning cabineos with pre-drilled holes in bottom plate and side panels and tighten. Use care not to over-tighten cabineos.



TOP VIEW

STEP 8: Insert bin divider (G) in desired location then insert dowels (4x) into tops of side panels and attach top caps (H, I).



TOP VIEW

DRAWN DaniaelL	4/20/2023	This document and all contained information is the property of Modern Store Equipment (MSE). NEITHER THIS DRAWING ITSELF NOR ARTICLE NOR COMPONENT ILLUSTRATED THEREIN MAY BE REPRODUCED IN WHOLE OR PART, IN ANY FORM WITHOUT PRIOR WRITTEN AUTHORITY FROM Modern Store Equipment. THIS DRAWING HAS BEEN DELIVERED ON THE UNDERSTANDING THAT IT IS NOT TO BE USED IN ANYWAY AGAINST THE INTERESTS OF Modern Store Equipment AND WILL BE RETURNED ON DEMAND.	
CHECKED		TITLE	
QA			
MFG			
APPROVED			
		SIZE D	REV
		SCALE 1 / 6	4BWB RTA Assembly instructions
		SHEET 4 OF 4	