



# Unisub Key Chains

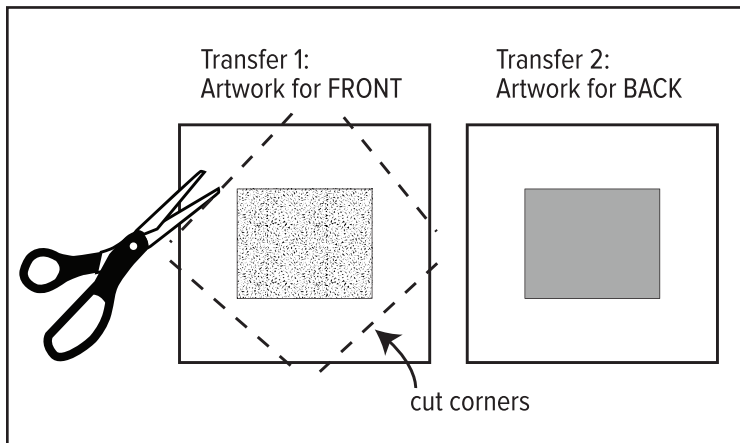
Unisub Sublimation Tip Sheet

## MATERIALS NEEDED:

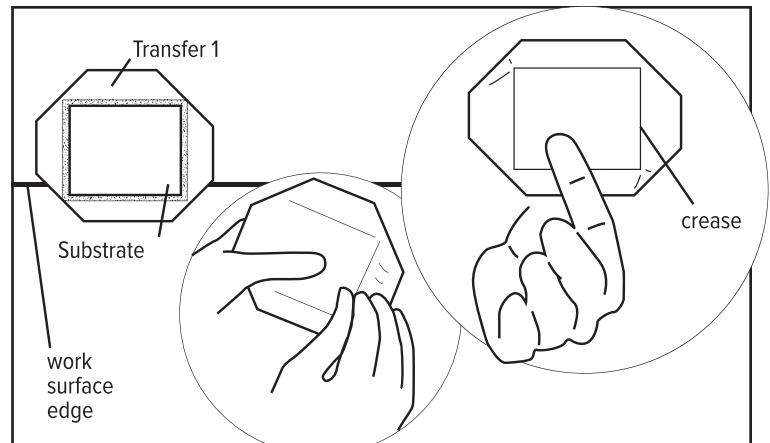
- Unisub Bare Two-Sided Key Chain (Key Ring provided)
- Printed Transfer and Scissors
- Sublimation Printer (RIP Printing Software)
- Small Swing Away Heat Press set to 385° F (Heat Gloves and Heat Tape)
- Blowout Paper
- Cloth for Cleaning and All-Purpose Cleaner



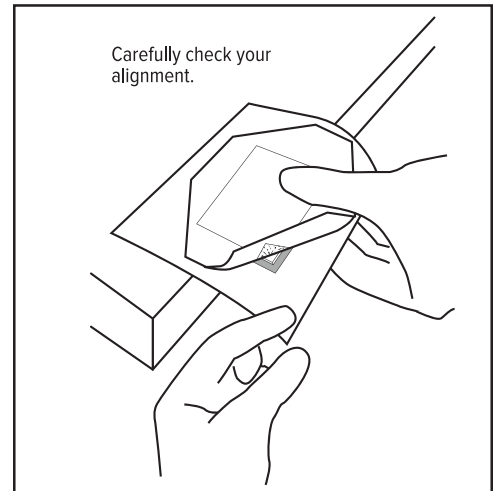
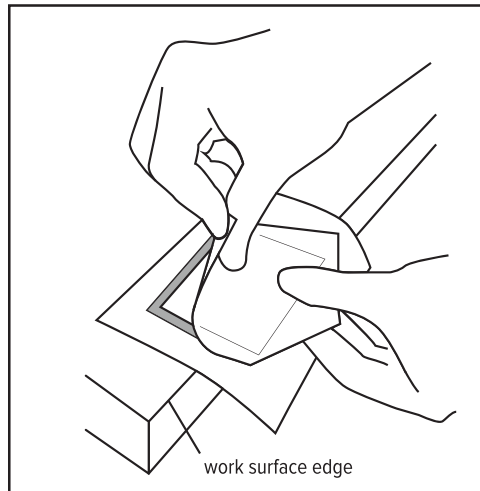
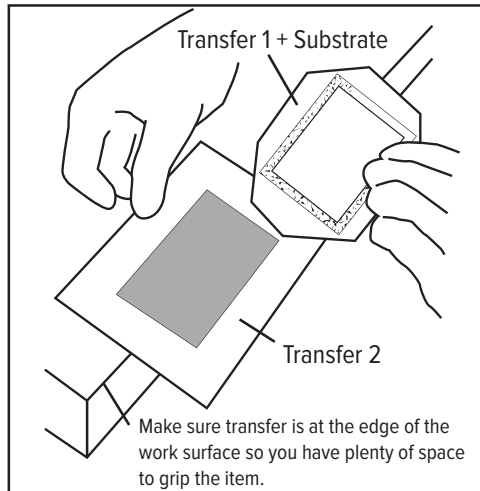
## INSTRUCTIONS



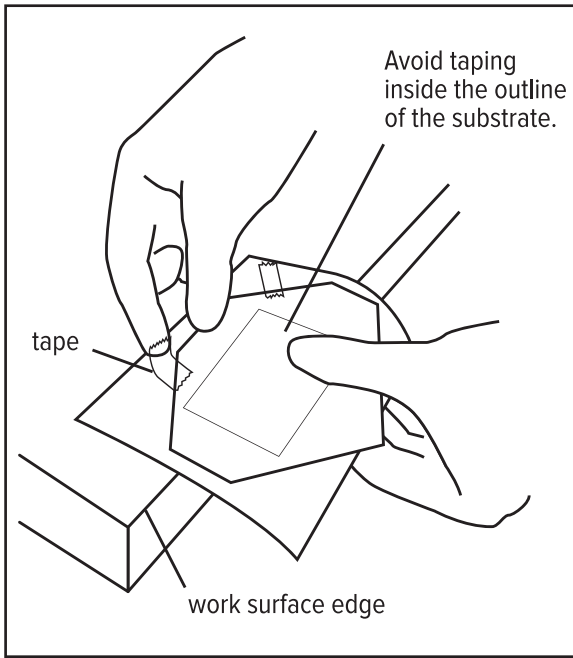
**Step 1:** Clean the bare key chain. You should have two images printed on your transfers. Cut the corners of one of the transfers about a quarter inch away from the edge of the image in order to have plenty of space to tape the first transfer to the second.



**Step 2:** Next, line up and center one side of the blank key chain to the transfer with the cut corners. Pick it up, and crease the transfer paper along the edges, so it will stay lined up with the outline of the image or graphic.



**Step 3:** Make sure the transfer is at the edge of the table, and hold the first transfer in place by tightly gripping it with your thumb and finger. Carefully flip the key chain. Line it up with the second transfer, keeping the first side of the transfer slightly peeled back, so you can see where you're placing the key chain. Once secured on the second transfer, peel back the edges of the first to double check that all the sides are even. Make small adjustments as needed.



**Step 4:** Next place four pieces of tape on the corners to secure the transfers to the key chain. Avoid placing the tape on the key chain outline. Carefully slide the prepared key chain off the table and place in the heat press. Make sure to have clean blowout paper on the bottom and the top of the key chain in the press. **Press key chain at 385° F following the times in the chart below.** Time may vary based on equipment. Increase time if pressing more than one key chain at a time.



**Step 5:** Once pressed, allow the key chain to cool, and remove the blowout paper. Pull the transfers off both sides of the key chain, and allow to cool for a few minutes. Attach the key rings using provided hardware.

Product	Temperature	Both Sides at a Time	One Side at a Time
Aluminum (two-sided)	385° F	0:50-1:00	50-60 seconds
Aluminum (one-sided)	385° F	----	40-50 seconds
FRP (fiberglass reinforced plastic)	385° F	----	1:00-1:10

**Extra Tip:** If you would like tips to press one-sided key chains, please follow the process outlined on our small products or magnet tip sheets.