



# Unisub Coasters and Coaster Puzzle

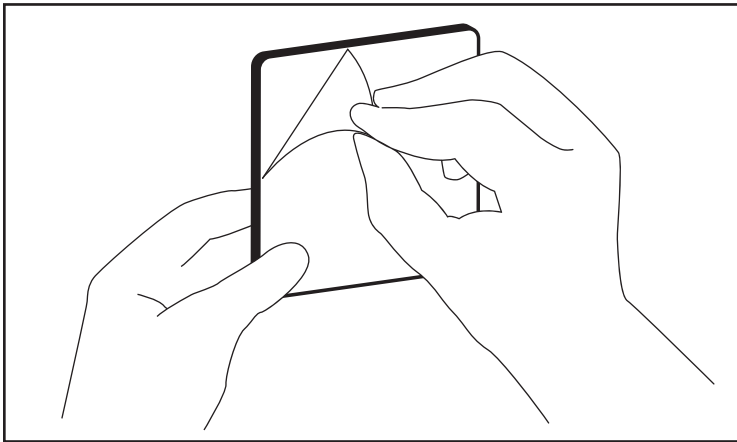
Unisub Sublimation and Assembly Tip Sheet

## MATERIALS NEEDED:

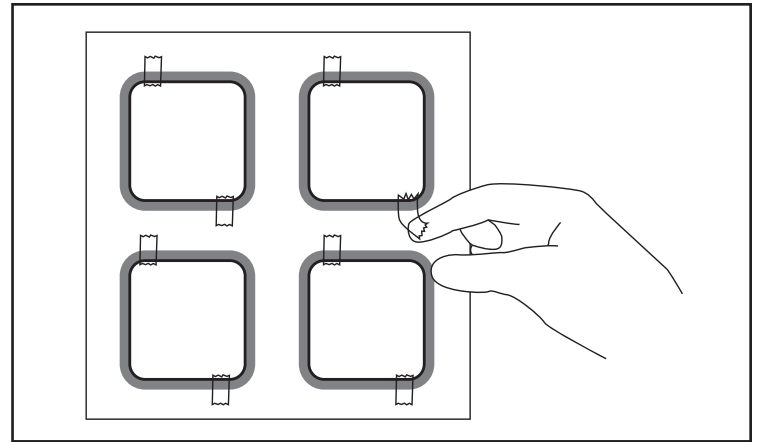
- Unisub Bare Coaster
- Printed Transfer and Scissors
- Sublimation Printer (RIP Printing Software)
- Small Swing Away Heat Press set to 385° F (Heat Gloves and Heat Tape)
- Blowout Paper
- Cloth for Cleaning and All-Purpose Cleaner



## INSTRUCTIONS

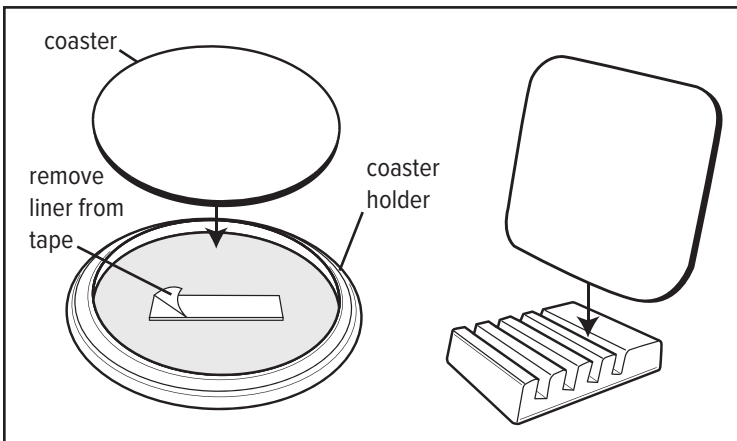


**Step 1:** First, peel film off the coaster, if applicable (coasters without cork on the back do not generally have film). Next, clean the coaster.



**Step 2:** Line up and center the coaster to the transfer. Tape in two places. **With bare sides facing up, place in heat press set to 385° F following the times in the chart below.** Time may vary based on equipment. Increase time if pressing more than one coaster at a time. Remove transfer, and allow to cool.

## ASSEMBLY



**Assembly:** To assemble the mahogany holder and insert, peel back the liner from the tape in the holder, and place the insert in the holder. Present the other coasters in the mahogany slotted coaster holder, which is able to hold four coasters.

Product	Temperature	Time
Cork Back and Raw Back Coasters	385° F	1:00-1:10
FRP (fiberglass reinforced plastic) Inserts	385° F	1:10-1:20
Coaster Puzzle	385° F	1:00-1:10

**Extra Tip:** Do not separate the puzzle pieces before pressing the coaster puzzle. Press all at once. To keep the pieces together when pressing place a piece of tape across the back.

