

INSTA™

INSTA GRAPHIC SYSTEMS



MODEL 718/728/828

OPERATION AND MAINTENANCE MANUAL

Safety Summary



WARNING

In case of power cord damage, do not attempt to repair or replace the power cord. Contact the manufacturer or the local distributor.



WARNING

For protection against fire and electric shock, replace with same type and rating fuse. Fuse rated max. 1 amp 120V.



WARNING

Hot Surface. Avoid contact.



CAUTION

During normal operation, the base of the machine needs to be installed or placed above the wall socket.



CAUTION

The recommended input pressure shall not exceed 100 psi. The operating pressure is from 30 – 100 psi.



CAUTION

The operation may be terminated by pressing the **DISENGAGE** switch.



CAUTION

The machine is to be operated by one person only.



CAUTION

To reduce the risk of electric shock and injury to persons, disconnect from power supply before servicing and /or cleaning.

International Symbols



Power Off



Power On



Hot Surface



Risk of Electrical Shock



Protective Earth Terminal



Start Action



Disengage



Ground



Caution - Warning

Congratulations!

Your selection of the Insta Graphic Systems heat seal machine is a sound business decision. Insta equipment is the result of the highest quality engineering and time-tested design. Your new machine combined with Insta's reputation of innovation in the heat-sealing field, insures the continuing capability of delivering the best-decorated substrates possible.

This manual describes installation, operation, and maintenance procedures for your 700/800 series machine, as well as easy to use instructions for on-the-spot maintenance.

Your machine will have a long, trouble free life. Read this manual. Keep it with your machine; it's your key to proper operation and lasting service.

General Description

The 718, 728 and 828 are Automatic Swing Away machines generating and distributing evenly tremendous pressure throughout its upper and lower platens. These machines are essential in the application of sublimation transfers. Its cast-in tubular heating element heats the metal from within, to produce constant and long lasting heat. The 718 machine has 15" x 15" platens; the 728 has 15" x 20" platens; the 828 has 20" x 25" platens.

Installation



DOMESTIC – 700 SERIES

Use a **separate** 15 amp AC circuit. Only industrial extension cords with proper wire size should be used: size 16/3 wire for distances up to 25 feet, and size 14/3 for distances up to 50 feet.



INTERNATIONAL – 700 SERIES

Use a **designated** 16 amp AC circuit. Only industrial extension cords with proper wire size (2.5 sq. mm) shall be used.



DOMESTIC – 800 SERIES

Use a **separate** 230/240 20 amp AC circuit. Only industrial extension cords with proper wire size should be used: size 16/3 wire for distances up to 25 feet, and size 14/3 for distances up to 50 feet.



INTERNATIONAL – 800 SERIES

Use a **designated** 20 amp AC circuit. Only industrial extension cords with proper wire size (3.3 sq. mm) shall be used.

Specifications

MODEL 718/728/828

Voltage	120 Volts AC	50/60 Hertz
Model 718	1500 Watts	12.5Amps
Model 728	1750 Watts	14.6 Amps

Voltage	240 Volts AC	50/60 Hertz
Model 718	1500 Watts	6.3 Amps

Voltage	230 Volts AC	50/60 Hertz
Model 728	2200 Watts	9.6 Amps
Model 828	3300 Watts	14.4 Amps

Model 718	Machine Weight	128 Pounds (58.1 KG)
Model 728	Machine Weight	143 Pounds (64.9 KG)
Model 828	Machine Weight	218 Pounds (98.9 KG)

Degree of Protection

IP (Ingress Protection) rating according to IEC 60529.

NOTE

IEC 60529 does not specify sealing effectiveness against the following: mechanical damage of the equipment; the risk of explosion; certain types of liquid conditions, e.g. those that are produced by condensation; corrosive vapours; fungus; vermin

IP54 = IP
 1st Digit 5
 2nd Digit 4

1 st Digit	Protection from solid objects	2 nd Digit	Protection from moisture
0	Non protected	0	Non protected
1	Objects greater than 50mm	1	Dripping water
2	Objects greater than 12mm	2	Dripping water when tilted up to 15 deg.
3	Objects greater than 2.5mm	3	Spraying water
4	Objects greater than 1mm	4	Splashing water
5	Dust protected	5	Water jets
6	Dust tight	6	Heavy seas
--	---	7	.15m – 1m immersion
--	---	8	1m + submersion

Operation

1. Push **POWER/MODE** button on the controller to turn **ON** machine. Hold **POWER/MODE** for 3 seconds to turn off machine.
2. Set desired temperature and select the desired timing cycle (see controller operation). Swing the upper platen arm to its fully open position, away from lower platen.
3. Allow the machine to warm up until the selected temperature is reached.
4. Set the desired pressure by adjusting the air pressure regulator.
5. Place the substrate on lower platen, smoothing out all wrinkles.
6. Position transfer or lettering on substrate.
7. Swing the upper arm into position directly over the lower platen.
8. Depress and hold both start buttons simultaneously until the lower platen contacts the upper platen. The **start buttons must be held until the upper and lower platens make contact**. At this point the machine operation is fully automatic. The platens seal the transfer to the substrate and then release automatically at the end of the selected timing cycle.

Note: **Safety Delay** is by default set to **ON**.

Safety Delay may be disabled by following instructions on page 8-9.

9. Swing away the upper platen to the opposite side and remove substrate.
10. The **DISENGAGE** button may be pushed at anytime to deactivate the machine.



NOTE

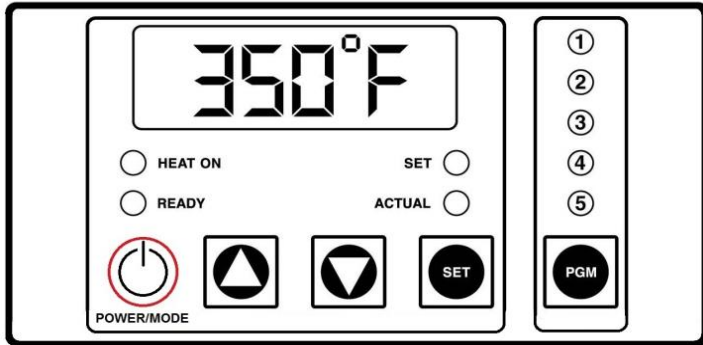
The air filter may be loose a little to hinder the bowl from breaking during handling. Do not touch the polycarbonate bowl with synthetic grease during operation and maintenance. Make sure your hands are clean before touching the air filter bowl.

Environmental Conditions

Only operate Insta heat seal machines under suitable environmental conditions.

1. Placed on a even, non flammable surface.
2. Can support a minimum of 300 lbs. if placed above a platform.
3. Do not restrict access to the main power switch.
4. Maintain a clearance around any forms of liquid.
5. Do not over extend the power cord.
6. The operational voltage should not be 10% max/min of the rated value.
7. Avoid voltage spikes.
8. Sound pressure level at operator station does not exceed 70dB (A).

Solid State Controller: Model 718 shown



This controller has three (4) control features:

1. Temperature - Temperature can be set from 125 - 450°F (52-232°C).
2. Time - Time can be set from 1 second to 10 minutes.
3. Counter – Cycle counter counts the number of applications from 1 to 9999 (see additional Notes – Counter).
4. Presets - Five (5) presets that can be programmed by the user. Each preset will retain a temperature and time setting, i.e. Program #1 could be set for 325°F and 10 seconds while Program #2 could be set for 375°F and 15 seconds. Once the five presets have been programmed, the user need only press the **PGM** button repeatedly until the desired program is selected. The lit LED above the PGM button indicates the selected program. *Note: there is also a sixth setting that is indicated by no lit LED's.*

Controller Operation

1. Select the desired preset program by pressing the **PGM** button until the LED above the **PGM** button indicates the desired setting.
2. If a setting other than the programmed presets are desired, press the **PGM** button until **none** of the LED's above the **PGM** button are lit.
3. Changing the Temperature
 - Press the **POWER/MODE** (or **MODE**) button until temperature is displayed.
 - Press and hold **SET** button in while pressing the UP (↑) or DOWN (↓) arrow buttons to the desired temperature setting.
4. Changing the Timer
 - Press the **POWER/MODE** (or **MODE**) button until timer is displayed.
 - Press and hold **SET** button in while pressing the UP (↑) or DOWN (↓) arrow buttons to the desired timer setting.



NOTE

The **DISENGAGE** switch (located in the center of the instrument panel) may be pushed at any time to deactivate the machine. The cycle will stop immediately, and the timer will reset.

Setting the Presets

1. Push and hold both the **POWER/MODE** (or **MODE**) and **PGM** buttons for 3-5 seconds until one of the programs LED's starts to blink. This is the **programming mode**.
2. A blinking LED above the **PGM** button indicates which preset is active.
3. Select a program (1,2,3,4,or 5) by pressing the **PGM** button.
4. Setting Temperature
 - Press the **POWER/MODE** (or **MODE**) button until temperature is displayed.
 - Press and hold **SET** button in while pressing the UP (↑) or DOWN (↓) arrow buttons to the desired temperature setting.
5. Setting Time
 - Press the **POWER/MODE** (or **MODE**) button until time is displayed.
 - Press and hold **SET** button in while pressing the UP (↑) or DOWN (↓) arrow buttons to the desired timer setting.
6. Repeat steps 3-5 until all five (5) presets have the desired preset (temperature/time cycle).
7. Push and hold both the **POWER/MODE** (or **MODE**) and **PGM** buttons for 3-5 seconds until a single beep sound is heard to exit the **programming mode**.



NOTE

If a Fahrenheit/Celsius change is desired, see **Additional Notes – Temperature**.



NOTE

When in the **normal mode**, none of the five program LED's will be **blinking** and the user cannot change the time and temperature for any of the five presets.



NOTE

When the machine is operating with **none** of the five program LED's lit, i.e. no presets, the time and temperature **WILL BE SAVED** even if the power is turned off. The presets will also be saved when the power is turned off.

Additional Notes

Timer

- The controller has a count down timer, which automatically disengages (opens) the machine at the completion of the application.
- Timer display is minutes:seconds. Range is **00:00** to **10:00**, Colons (:) flash while timer is running.



NOTE

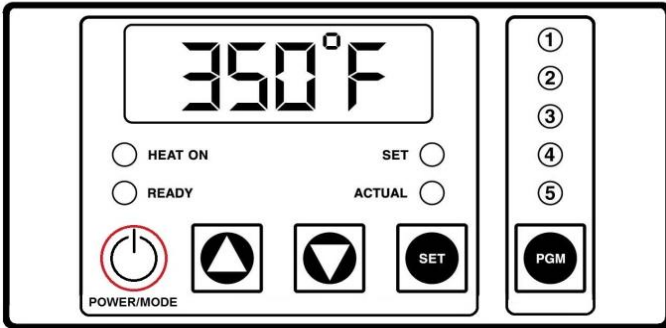
The **DISENGAGE** switch (located in the center of the instrument panel) may be pushed at any time to deactivate the machine. The cycle will stop immediately, and the timer will reset.

Counter

The controller has a built in cycle counter.

- Press **POWER/MODE** (or **MODE**) button until the counter is displayed.
- Counter display range is 0000 to 9999.
- To reset the cycle counter, display the counter reading, then push and hold UP (↑) and DOWN (↓) arrow buttons for 3 seconds until the counter resets to zero (**0000**) on the display.

Sleep Time, Set Back Temperature, Automatic Shut Off, Temperature Conversion, and Offset



Model 718 Shown

The Sleep Mode / Automatic Shut Off is designed to save electrical consumption when the user is not engaged in the usage of the Insta heat seal machines for a pre-determined period of time defined by the user.

During activation, any disturbances such as the key press or heat press cycle will reset the timers for both Sleep Mode and Automatic Shut Off.

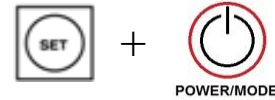
When the Automatic Shut Off is set to OFF and the Sleep Mode is activated, any disturbances to the machine will disengage the Sleep Mode.

When the Sleep Mode is set to OFF, the timer for Automatic Shut Off will activate and resets after every pressed key or heat press cycle.

- Sleep Time
(Level 1 – Menu 1)
- Set Back Temperature
(Level 1 – Menu 2)
- Automatic Shut Off Time
(Level 1 – Menu 3)
- Fahrenheit / Celsius
(Level 1 – Menu 4)
- User Offset
(Level 1 – Menu 5)

Sleep Time

1. Press the **POWER/MODE** (or **MODE**) button until the counter displays. Enter the Factory Mode by pressing and holding together **SET** then **POWER/MODE** (or **MODE**) for **3 to 5 seconds**.



2. Press **SET + UP** or **DOWN** Arrow to set Sleep Mode Time.



1._XX ; XX = Minutes from OFF to 99

Set Back Temperature

3. Press **POWER/MODE** (or **MODE**).
4. Press **SET + UP** or **DOWN** Arrow to set Set Back Temperature.



2._XXX ; XXX = Temp. from 225F to 300F

Automatic Shut Off

5. Press **POWER/MODE** (or **MODE**).
6. Press **SET + UP or DOWN Arrow** to set Auto Shut Off Time.



3._XX ; XX = Minutes from OFF to 99

Temperature Conversion

7. Press **POWER/MODE** (or **MODE**).
8. Press **SET + UP or DOWN Arrow** to set Fahrenheit or Celsius.

4._X ; X = F or C

User Offset

9. Press **POWER/MODE** (or **MODE**).
10. Press **SET + UP or DOWN Arrow** to set the Offset.



5._XX ; XX = Offset Number

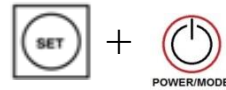
Exit

11. Press and hold together **SET then POWER/MODE** (or **MODE**) at any time for **3 to 5 seconds** to Exit.



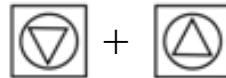
Turn ON/OFF 1-second delay

1. Clear **PGM** presets, Press **PGM** until all lights are off
2. Press **MODE** button until counter appears
3. Press and hold **SET + MODE**.



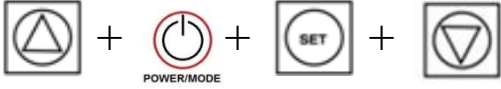
Hold until beep is heard, then release.
You are now in the programming settings.

4. Press **MODE** until you see 5. XX
5. Press and hold **DOWN** arrow then **UP** arrow and hold.



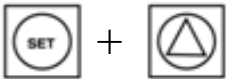
Note: press down arrow first before pressing up arrow. Hold both buttons, DO NOT release until _ _ _ _ appears.

6. Enter code: **UP** arrow, **MODE**, **SET**, **DOWN** arrow



You are now in the second tier of programming settings.

7. Press **PGM** button until light #4 is on.
8. Press **MODE** button until you read 6.
ON/OFF
If **ON**, turn **OFF** by holding **SET** and **UP** arrow



9. Once task has been completed, exit programming by holding **SET** + **MODE**.



Preventive Maintenance Suggestions

The Insta heat seal machines are relatively maintenance free. For long, trouble-free life, the following preventive maintenance should be followed:

1. Do not heat seal items such as buttons, pins, snaps, or zippers that tend to cut the silicone rubber pad or scratch the Teflon heat platen.
2. Periodically clean the Teflon-coated heat platen with a non-abrasive piece of cloth. Stubborn stains may be cleaned, **when platen is cool**, with mineral spirits.
3. When the heat platen is hot and not in use, keep in open position (away from the silicone rubber pad).
4. To prevent soiling of substrate, periodic wiping of the entire exterior machine, including platens, with a clean rag is recommended. If necessary, use mineral spirits for cleaning a **cold** machine. Since mineral spirits are flammable, use precautions and keep away from sparks, flame, or hot heat platen.
5. The machine requires periodic lubrication with a high-temperature, non-melting grease (MPPL023). Lubricate the post and heat platen's pivot pin depending upon usage. (Once every month if used continuously.)



NOTE

Wipe off any excess oil or grease.

6. Turn off air pressure when machine is not being used.

Preventive Maintenance Suggestions

7. Polycarbonate bowls and pressure gauges: Avoid area with direct sunlight; impact blow or temperature outside of the rated range.
8. Do not expose/clean filter bowls with detergents, chlorinated hydro-carbons, ketones, esters or certain alcohols.
9. Do not expose the polycarbonate bowls or the sight gauges in air systems where compressors are lubricated with fire resistant fluids such as phosphate ester and di-ester lubricants.
10. Remove excessive dirt, grime and clutter from work area.

General Maintenance

It is recommended that you have the following items available:

- A. Regular screw driver
- B. Phillips head screw driver
- C. Small adjustable wrench
- D. Needle nose pliers with insulated handle
- E. Set of Allen wrenches
- F. Grease gun (MAPG010)
- G. Special high temperature grease (MPPL023)

With the above items you should be able to accomplish most repairs.



WARNING

Power cord replacement should be from the manufacturer only (because it requires a special prepared cord.)

Micro Switch Adjustment

Adjustment of the micro switch must be accomplished with the power **ON**. The air may be on or off.

1. Disconnect power supply; remove instrument housing (2 screws in front panel) to expose the micro switch and electrical circuitry. Reconnect power supply.
2. For Model 828 only:
 - Remove Item 30, Microswitch Cover (MPSP800).



WARNING

Avoid touching exposed terminals.

3. Set timer for a one (1) second interval.
4. Swing upper platen into working position until stop is reached. Back up just enough to align the outside of front corner of shroud with edge of lower platen (near swing away handle). The micro switch must be adjusted to **JUST CLOSE**, as upper platen swings to this position.
5. To change micro switch setting, loosen the screw on slotted end of micro switch (#40) and move in desired direction to bring switch to **JUST CLOSED** condition (listen for an audible click from micro switch) and re tighten screw.
6. For Model 828 only:
 - Re-install Item 30, Microswitch Cover (MPSP800).



WARNING

Machines are shipped with a standard air fitting. **EUROPEAN models include a MPPF086 quick disconnect air fitting.**

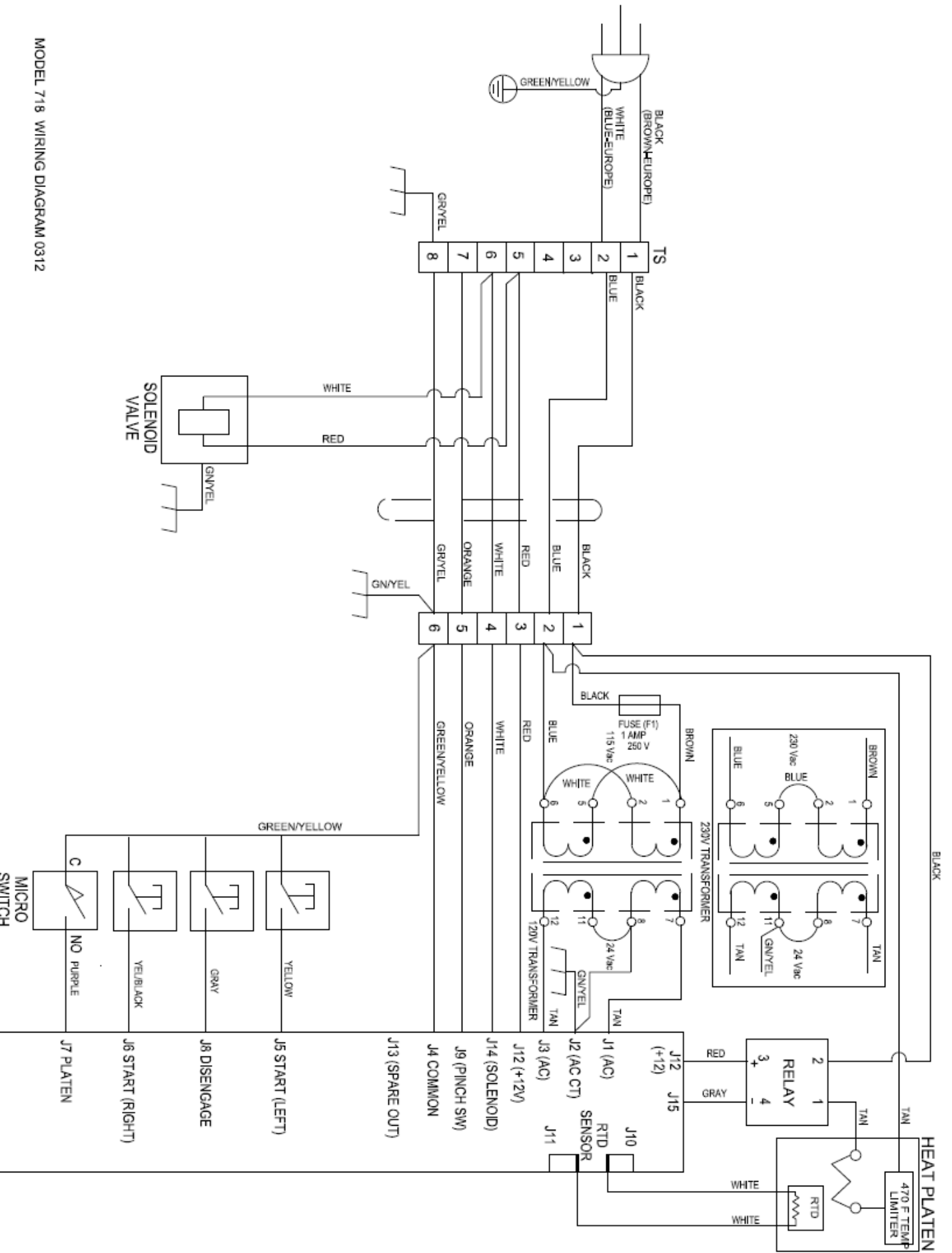
Replacement of Silicone Rubber Pads

1. Make sure heat platen is cool.
2. Use tube of MPPC006 silicone adhesive sealant to bond the silicone rubber pad to metal platen. **NOTE:** *Read instructions on the tube package.*
3. Be sure that the surface of the silicone platen is clean. Use a **mild** solvent such as **mineral spirits**.
4. The pad and metal must be thoroughly dry and clean, before starting the bonding operation.
5. Apply adhesive sealant to the metal platen. Spread a thin even coat and apply pad immediately. Apply pressure and position pad making sure that there is no air entrapment.

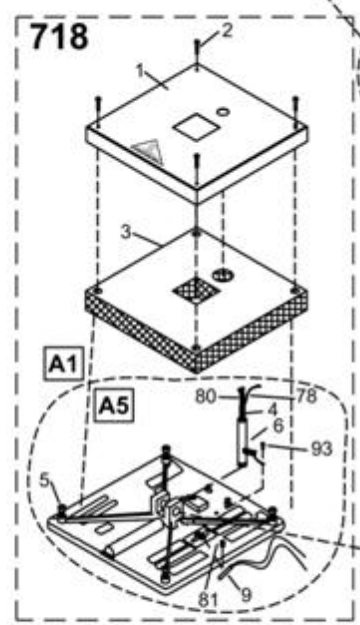
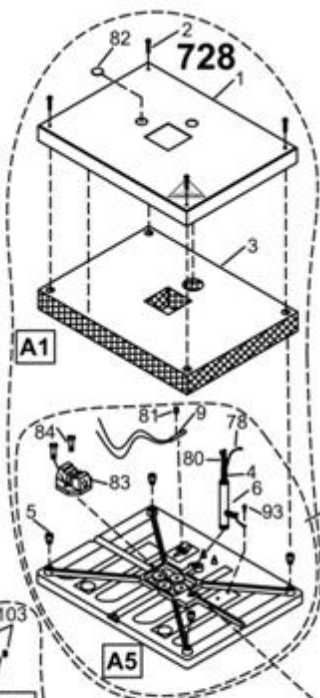
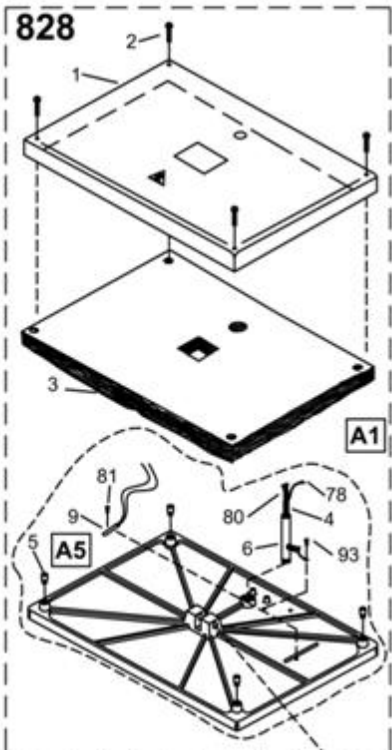
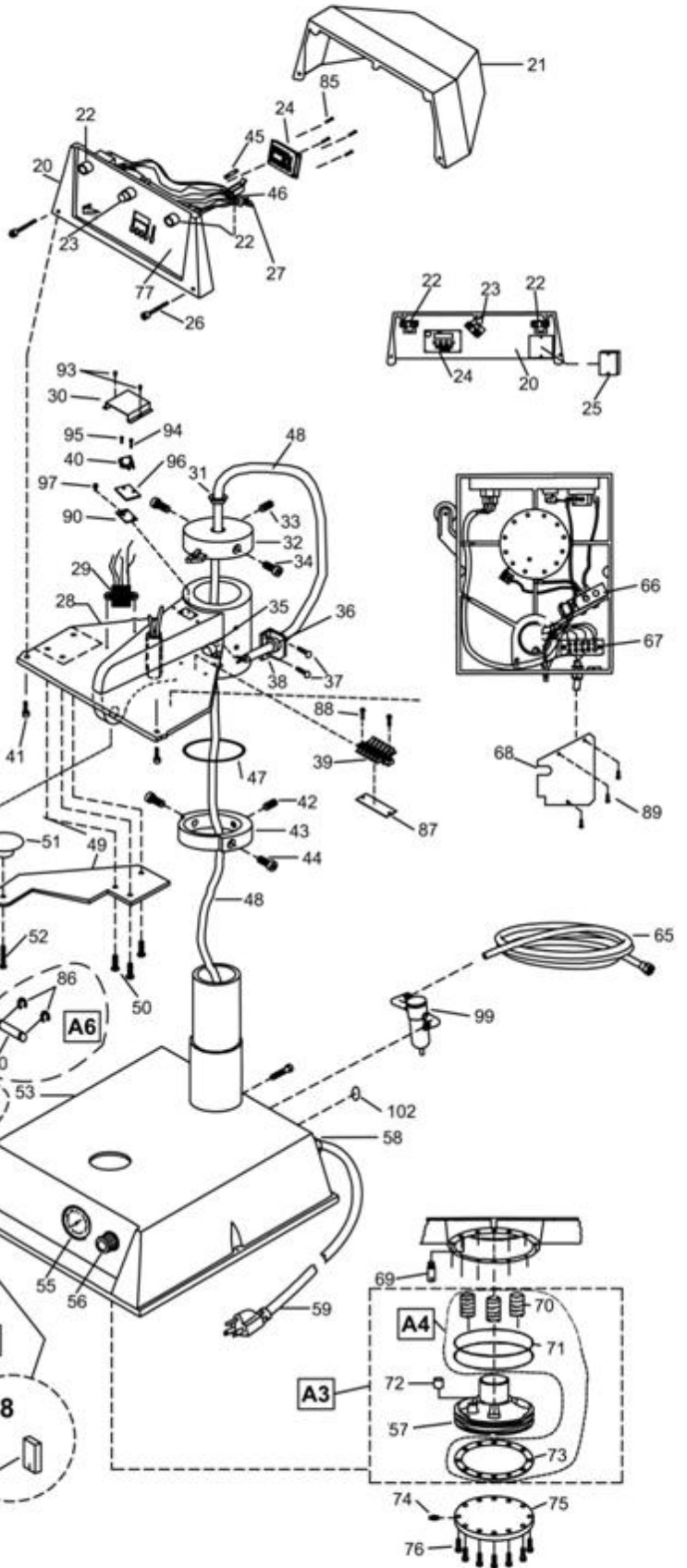
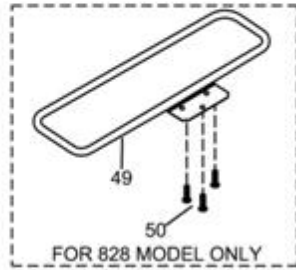
NOTE: *A serrated blade such as used for laying down rubber floor tiles would be helpful.*
6. Allow to cure overnight under low pressure at normal room temperature.

Safety and Danger Zone Diagram (Model 728 Shown)





Model 718 728 828



MODEL 718 / 728 / 828

718 728 828 PARTS LIST

NO	PART NAME	MODEL	MODEL	MODEL	MODEL	MODEL
		718	718	728	728	828
		115V AC	230V AC	115V AC	230V AC	230V AC
1	SHROUD, HEAT	MPSS218	MPSS218	MPSS228	MPSS228	MPSS148
2	SCREW, PAN HD #10 x .75" LG PHIL SH METAL	MPSS143	MPSS143	MPSS143	MPSS143	MPSS143
3	INSULATION, FIBERGLASS	MPSP251	MPSP251	MPSP254	MPSP254	MPSP254 (2)
4	TUBING, SHRINK TFE AWG7	MPPS131	MPPS131	MPPS131	MPPS131	MPPS131
5	INSULATORS, SPACER (4/SET)	MPSI089	MPSI089	MPSI089	MPSI089	MPSI089
6	POST, GUIDE	MPSP084	MPSP084	MPSP084	MPSP084	MPSP084
9	SENSOR, TEMP. REPLACEMENT KIT	MPPS210	MPPS210	MPPS210	MPPS210	MPPS210
10	PIN, PIVOT PLATEN	MPP90141	MPP90141	MPP90141	MPP90141	MPP90141
12	PAD, SILICONE RUBBER	MPPP030	MPPP030	MPPP031	MPPP031	MPPP825
13	SCREW, SET 5/16-18 x 1.00" LG (4/SET)	MHSST516181	MHSST516181	MHSST516181	MHSST516181	N/A
14	BREAK-AWAY, LOWER PLATEN	MPSP70034	MPSP70034	MPSP70034	MPSP70034	N/A
15	SCREW, SET 3/8-16 x .500" LG	MHSST381612	MHSST381612	MHSST381612	MHSST381612	MHSST381612
16	STEM, LOWER PLATEN	MH70035	MH70035	MH70035	MH70035	MH70035
17	BOLT, EYE 1/4-20 x 1.00" LG	MHBE14201	MHBE14201	MHBE14201	MHBE14201	N/A
18	SPRING, BREAKAWAY	MH70002	MH70002	MH70002	MH70002	N/A
19	PIN, BREAKAWAY	MH700126	MH700126	MH700126	MH700126	N/A
20	PANEL, FRONT INSTRUMENT	MPSP728	MPSP728	MPSP728	MPSP728	MPSP728
21	HOUSING, INSTRUMENT	MPSP722	MPSP722	MPSP722	MPSP722	MPSP722
22	SWITCH, START ASS'Y	MPPS703	MPPS703	MPPS703	MPPS703	MPPS703
23	SWITCH, DISENGAGE ASSY	MPPS713	MPPS713	MPPS713	MPPS713	MPPS713
24	CONTROLLER, TEMPERATURE (DIGITAL)	MPTT754-616	MPTT754-616	MPTT754-616	MPTT754-616	MPTT754-616
25	RELAY, SOLID STATE	MPSR2450	MPSR2450	MPSR2450	MPSR2450	MPSR2450
26	SCREW, PAN HEAD 10-24 x 1.75" LG	MHSP1024134	MHSP1024134	MHSP1024134	MHSP1024134	MHSP1024134
27	WIRE HARNESS	MPPW731	MPPW732	MPPW731	MPPW732	MPPW732
28	ARM, ASSEMBLY	MPSA72821	MPSA72821	MPSA72821	MPSA72821	MPSA82821
29	TRANSFORMER	MPT90319	MPT90319	MPT90319	MPT90319	MPT90319
30	COVER, MICRO SWITCH	N/A	N/A	N/A	N/A	MPSP800
31	BUSHING, POWER DIST. CABLE	MPSB072	MPSB072	MPSB072	MPSB072	MPSB073
32	CAP, POST	MPSP104	MPSP104	MPSP104	MPSP104	MPSP106
33	SCREW, SOCKET SET 5/16-18 x .750" LG	MHSST5161834	MHSST5161834	MHSST5161834	MHSST5161834	MHSST5161834
34	SCREW, SOCKET HEAD 5/16-18 x 1.00" LG	MHSSH516181D	MHSSH516181D	MHSSH516181D	MHSSH516181D	MHSSH516181D
35	CLAMP, CABLE	MHCC12	MHCC12	MHCC12	MHCC12	MHCC34
36	STRAIN RELIEF	MPSS164	MPSS164	MPSS164	MPSS164	MH1237
37	SCREW, PAN HEAD 8-32 x .375" LG	MHSP83238	MHSP83238	MHSP83238	MHSP83238	MHSP83238
38	BRACKET, STRAIN RELIEF	MPSS161	MPSS161	MPSS161	MPSS161	MPSS162
39	TERMINAL BLOCK (6 POSITION)	MPPT705	MPPT705	MPPT705	MPPT705	MPPT705
40	SWITCH, MICRO	MPPS044	MPPS044	MPPS044	MPPS044	MPPS044
41	SCREW, BUTTON HEAD 1/4-20 x .625" LG	MHSB142058	MHSB142058	MHSB142058	MHSB142058	MHSB142058
43	COLLAR	MPSC72023	MPSC72023	MPSC72023	MPSC72023	MPSC72023
45	FUSE (1 AMP 250V)	MPPF701	MPPF701	MPPF701	MPPF701	MPPF701
46	FUSE HOLDER	MPPF708	MPPF708	MPPF708	MPPF708	MPPF708
47	O-RING, POST	MPSS062	MPSS062	MPSS062	MPSS062	MPSS062
48	WIRE, DISTRIBUTION	MPPW90342	MPPW90342	MPPW90342	MPPW90342	MPPW90343
49	HANDLE, SWING AWAY	MPSH072	MPSH072	MPSH072	MPSH072	MPSH825
50	SCREW, SOCKET HEAD 1/4-20 x .625" LG	MHSSH142058	MHSSH142058	MHSSH142058	MHSSH142058	MHSSH142058
51	KNOB, MUSHROOM	MPPK017	MPPK017	MPPK017	MPPK017	N/A
52	SCREW, SOCKET HEAD 1/4-20 x .750" LG	MHSSH142034	MHSSH142034	MHSSH142034	MHSSH142034	N/A
53	BASE ASSEMBLY	MPSB721	MPSB721	MPSB721	MPSB721	MPSB826
55	GAUGE, AIR	MPPA001	MPPA001	MPPA001	MPPA001	MPPA001
56	REGULATOR, PRESSURE ASS'Y	MPPA006	MPPA006	MPPA006	MPPA006	MPPA006
57	PISTON ASSEMBLY, MS718 MS728	MPSP150	MPSP150	MPSP150	MPSP150	MPSP151
58	STRAIN RELIEF, BASE	MH3231	MH3231	MH3231	MH3231	MH3231
59	CORD, POWER (USA MODEL)	MPPW141	MPPW142	MPPW141	MPPW142	MPPW142
59A	CORD, POWER (EUROPEAN MODEL)	N/A	MPPW202	N/A	MPPW202	MPPW202
59B	CORD, POWER (GREAT BRITIAN)	N/A	MPPW203	N/A	MPPW203	MPPW203
65	HOSE, AIR ASSY	MPH90188	MPH90188	MPH90188	MPH90188	MPH90188
66	SOLENOID, AIR ASSY (24V)	MPPA024	MPPA024	MPPA024	MPPA024	MPPA024
68	PLATE, ELECTRICAL COVER	MPSL716	MPSL716	MPSL716	MPSL716	MPSL717
69	STANDOFF, GUIDE POST	MH11072	MH11072	MH11072	MH11072	MH11072
70	SPRINGS, PISTON (3/SET)	MPSS137	MPSS137	MPSS137	MPSS137	MPSS137
71	O'RINGS, PISTON (2/SET)	MPSR138	MPSR138	MPSR138	MPSR138	MPSR139
72	BUSHING, PISTON GUIDE	MPSB070	MPSB070	MPSB070	MPSB070	MPSB070
73	GASKET, PISTON	MPSG140	MPSG140	MPSG140	MPSG140	MPSG141
74	FITTING, AIR	MHAQ69P4X2	MHAQ69P4X2	MHAQ69P4X2	MHAQ69P4X2	MHAQ69P4X2
75	COVER, PISTON	MPSH141	MPSH141	MPSH141	MPSH141	MPSA82513

76	SCREW, SOCKET HEAD 1/4-20 x 1.00" LG	MHSSH14201	MHSSH14201	MHSSH14201	MHSSH14201	MHSSH14201
77	LABEL, CONTROL PANEL OVERLAY, PWR/MODE	MPL90350	MPL90350	MPL90351	MPL90351	MPL903052
78	WIRE, GROUND ASS'Y	MPW90125	MPW90125	MPW90125	MPW90125	MPW90125
80	WIRE, HEATER	MPPW700	MPPW700	MPPW700	MPPW700	MPPW700
81	SCREW, SET 3/8-16 x .50 LG	MHSSST381612	MHSSST381612	MHSSST381612	MHSSST381612	MHSSST381612
82	PLUG, BUTTON 7/8"	MPP90006	MPP90006	MPP90006	MPP90006	N/A
83	CLEVIS, UPPER PLATEN	N/A	N/A	MPSP222	MPSP222	N/A
84	BOLT, HEX 5/16-18 x 1.0 IN LG STAINLESS	N/A	N/A	MHBH516181S	MHBH516181S	N/A
85	SCREW, PHILLIPS PAN 6-32 x .75 LG	MHSP63234	MHSP63234	MHSP63234	MHSP63234	MHSP63234
86	CLIPS "E"	MPSC240	MPSC240	MPSC240	MPSC240	N/A
87	MARKER STRIP #6	MHS812XP0607A	MHS812XP0607A	MHS812XP0607A	MHS812XP0607A	MHS812XP0607A
88	SCREW, PHILLIPS PAN 8-32 x .625 LG	MHSP83258	MHSP83258	MHSP83258	MHSP83258	MHSP83258
89	SCREW, PHILLIPS PAN 8-32 x .25 LG	MHSP83214	MHSP83214	MHSP83214	MHSP83214	MHSP83214
90	PLATE, MICRO SWITCH ADJ.	MH700213	MH700213	MH700213	MH700213	MH700213
92	SCREW PHILLIPS PAN 6-32 x .625 LG	MHSP63258	MHSP63258	MHSP63258	MHSP63258	MHSP63258
93	SCREW PHILLIPS PAN 8-32 x .25 LG	MHSP83214	MHSP83214	MHSP83214	MHSP83214	MHSP83214
94	SCREW PHILLIPS PAN 4-40 x .75 LG	MHSP44034	MHSP44034	MHSP44034	MHSP44034	MHSP44034
95	SCREW PHILLIPS PAN 4-40 x .50 LG	MHSP44012	MHSP44012	MHSP44012	MHSP44012	MHSP44012
96	INSULATION, MICRO SWITCH	MH700214	MH700214	MH700214	MH700214	MH700214
97	SCREW PHILLIPS PAN 8-32 x .25 LG	MHSP83214	MHSP83214	MHSP83214	MHSP83214	MHSP83214
99	AIR FILTER ASSY	MH007-015	MH007-015	MH007-015	MH007-015	MH007-015
102	LABEL, ROHS / WEE	MPL90175	MPL90175	MPL90175	MPL90175	MPL90175
103	SCREW, SET 1/4-20 x .375 LG	N/A	N/A	N/A	N/A	MHSSST142038
104	GREASE FITTING 3/8"	MPPA700G	MPPA700G	MPPA700G	MPPA700G	MPPA700G
A1	PLATEN, HEAT ASS'Y	MPSP700	MPSP701	MPSP081	MPSP080	MPSP829
A2	PLATEN, LOWER ASS'Y	MASP008	MASP008	MASP009	MASP009	MASP825
A3	PISTON ROD ASS'Y	MPSP139	MPSP139	MPSP139	MPSP139	MPSP149
A4	PISTON REBUILD KIT	MPSP712	MPSP712	MPSP712	MPSP712	MPSP812
A5	UPPER PLATEN (WIRING ONLY)	MPSP078	MPSP079	MPSP068	MPSP069	MPSP828
A6	PIN PIVOT PLATEN ASSEMBLY	MPP90141	MPP90141	MPP90141	MPP90141	N/A
A7	PIN PIVOT PLATEN ASSEMBLY	N/A	N/A	N/A	N/A	MPP90292
A8	PLATEN LOWER ASS'Y 10 x 15	MASP002	MASP002	MASP002	MASP002	MASP002

FOR USE BY QUALIFIED PERSONNEL ONLY

FOR USE BY QUALIFIED PERSONNEL ONLY

FOR USE BY QUALIFIED PERSONNEL ONLY



13925 E. 166th St. • Cerritos, CA USA 90702 • (562) 404-3000 • Fax (562) 404-3010
Technical Support • (800) 426-3609