

CAMM-1

GR2-640

GR2-540

Installation Guide

-
-
- Thank you very much for purchasing this product.
 - To ensure correct and safe usage with a full understanding of this product's performance, please be sure to read through this manual completely and store it in a safe location.
 - Unauthorized copying or transferal, in whole or in part, of this manual is prohibited.
 - The specifications of this product and the contents of this operation manual are subject to change without notice.
 - This manual and the product have been prepared and tested as much as possible. If you find any misprints or errors, please inform Roland DG Corporation.
 - Roland DG Corporation assumes no responsibility for any direct or indirect loss or damage that may occur through use of this product, regardless of any failure to perform on the part of this product.
 - Roland DG Corporation assumes no responsibility for any direct or indirect loss or damage that may occur with respect to any article made using this product.
-
-

Roland DG Corporation

Contents

Contents	1
1.Installation and Settings	2
Introduction.....	3
Downloading Software	3
Software License Registration.....	4
1. Network Settings (LAN Connection)	6
Determining the Network Addresses	6
Setting the Computer's Network	6
Setting the Cutting Machine's Network.....	8
2. Installing the Driver	9
Installing the Driver (USB Connection)	9
Installing the Driver (LAN Connection)	12
Installing the Driver (RS-232C Connection)	14
3. Installing the Software.....	19
Installing GreatCut-R.....	19
Performing License Authentication	22
Setting the GreatCut-R Connection Method.....	24
2.What to Do If	26
Driver	27
The Driver Cannot Be Installed Correctly (USB Connection)	27
Uninstalling the Driver.....	29
Other Information	31
Updating the Automatic Aligning System (AAS) Plugin	31
Uninstalling GreatCut-R	32

Copyrights and property of this software and this manual belong to Roland DG Corporation. No part of this software or publication may be reproduced, stored in a retrieval system, or transmitted—in any form or by any means, electronic, mechanical, photocopy, recording, or otherwise—without the prior written permission of the publisher.

Company names and product names are trademarks or registered trademarks of their respective holders.

<http://www.rolanddg.com/>

Copyright © 2021 Roland DG Corporation

1. Installation and Settings

Introduction	3
Downloading Software.....	3
Software License Registration	4
1. Network Settings (LAN Connection)	6
Determining the Network Addresses.....	6
Setting the Computer's Network.....	6
Setting the Cutting Machine's Network	8
2. Installing the Driver	9
Installing the Driver (USB Connection).....	9
Installing the Driver (LAN Connection).....	12
Installing the Driver (RS-232C Connection).....	14
3. Installing the Software	19
Installing GreatCut-R	19
Performing License Authentication.....	22
Setting the GreatCut-R Connection Method	24

Introduction

Downloading Software

The software (Windows driver and application software) required to use the machine can be downloaded from the following URL.

After downloading the software, install it on your computer.

<https://downloadcenter.rolanddg.com/GR2-640>

Installable Software

Windows driver	This is a Windows-based driver required for sending data from a computer to the machine. Be sure to install it. It installs a VBA add-on in Adobe Illustrator and CorelDRAW to make it easier to use the Automatic Aligning System (AAS) used during printing and cutting.
GreatCut-R	This is cutting software designed for Windows that can perform high-quality cutting with simple operations. The manual for this software is incorporated in the Help files.
File Uploader	This software obtains data for the Automatic Aligning System (AAS) offset test performed when offsets occur with the AAS.
AAS Offset Test Files	This is a group of AAS offset test files (for printing and sending data).

In an arbitrary location, create a folder in which to download the software. Then, download all the installers to this folder.

Software Versions Supporting the GreatCut-R Host Application and Plugins

Adobe Illustrator	Adobe Illustrator CC (2014)/(2015)/(2016)/(2017)/(2018)/(2019)/(2020)/(2021)
CorelDRAW	CorelDRAW Graphics Suite X7/X8/2017/2018/2019/2020

Software License Registration

To use GreatCut-R as its regular edition, access the following URL and register your license.

<https://rolandvoucher.eurosystems.lu/>

MEMO

License registration requires a voucher code, so make sure it is ready.

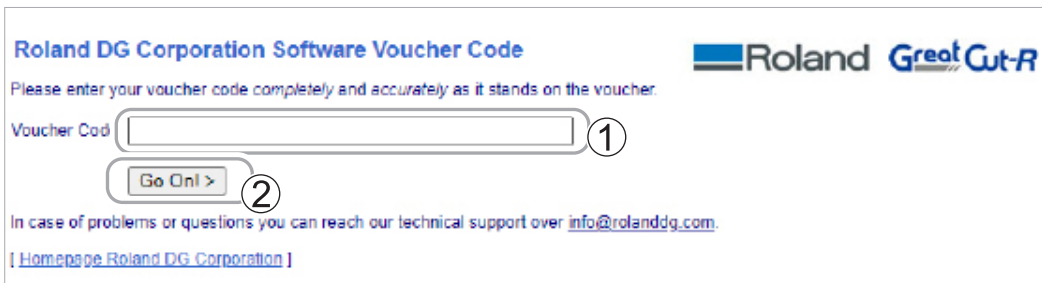
Voucher code

This code is the alphanumeric character string starting with "KROL" and consisting of four characters-five characters-five characters-five characters-five characters. It is listed on the cover of the English version of the setup guide included with the machine.

Procedure

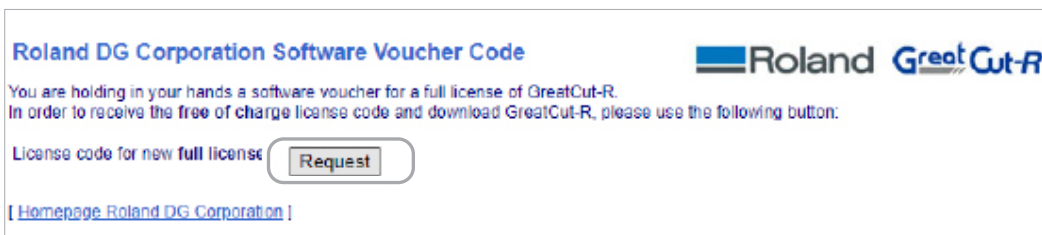
1 Enter the voucher code in the field, and then click [Go On!].

Including hyphens, enter the alphanumeric character string exactly as it appears on the cover of the English version of the setup guide included with the machine.



2 When the following screen appears, click [Request].


The Software Registration page appears.



- 3 Enter the items indicated with the  mark.

Software Download GreatCut-R

GreatCut-R
Software Registration

Last name, first name: ,  Required fields
Would you please use Latin resp. West-European characters!

Company:

Street:

PO box:

City:

State/Prov.: (only US and Canada)

Zip (postcode):

Country: <Select country>

Phone:

Fax:

eMail address:
because license code is sent to this address!

- 4 Click [Request license code].

The registration information is sent to the software administrator, and the following message appears.

Registration Successful

Thank you, that you decided for GreatCut-R.

An email with further information for GreatCut-R was sent to the given email address (masumi.fukunaga@rolanddg. Please be patient, as it may last up to 30 minutes until you can receive this email.

If you don't receive an email, please fill out the form on rolandvoucher.eurosystems.lu again with a working email address.

[[Home Roland DG Corporation](#)]

MEMO

Two email messages are sent to the registered address upon the completion of license registration. These messages contain information required for license authentication, so save or print them.

- Registration confirmation email with an activation link
- License email with license file (.ecf) attached

1. Network Settings (LAN Connection)

The examples used in the procedures for making the settings described in this section assume you are using one computer and one machine. The settings listed here are only an example. The procedure and settings given in this manual do not match every environment. If the computer you're using is connected to a number of networked devices or to the Internet, incorrect settings may adversely affect the entire network. For detailed information about the settings, consult your network administrator.

Determining the Network Addresses

Determine the IP address, subnet mask, and default gateway to connect the computer and this machine via a LAN.

Item	Computer	This Machine	Remarks
IP address	192.168.0.XXX	192.168.0.YYY	"XXX" and "YYY" represent numbers from 1 to 254. Ensure that they are different from the numbers of other network equipment.
Subnet mask	255.255.255.0	255.255.255.0	Use the same number for the computer and this machine.
Default gateway	255.255.255.AAA	255.255.255.AAA	"AAA" represents a number from 1 to 254. It may not be necessary to set this number, so check with your network administrator.

Setting the Computer's Network

This step is not necessary when connecting to an existing network environment.

Procedure

1 Log on to Windows as the "Administrator" or a member of the "Administrators" group.

2 Display the "Ethernet Properties" screen.

Windows 10:

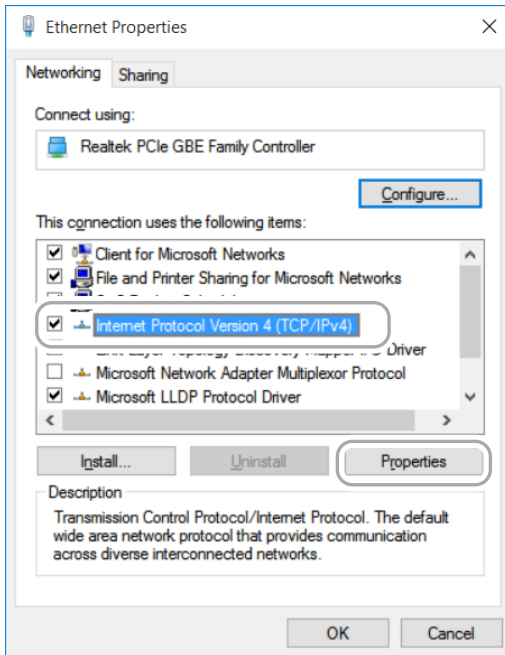
- 1 From the [Start] menu, click [Settings], and then click [Network & Internet].
- 2 Click [Network and Sharing Center].
- 3 Click [Ethernet] or [Wi-Fi].
- 4 Click [Properties].

Windows 8.1:

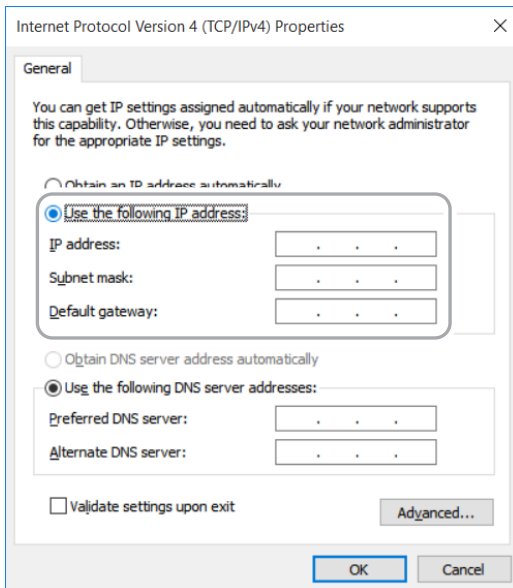
- 1 From the [Start] menu, click [PC settings], and then click [Control Panel].
- 2 Click [Network and Internet], and then click [Network and Sharing Center].
- 3 Click [Ethernet] or [Wi-Fi].
- 4 Click [Properties].

3 Select [Internet Protocol Version 4 (TCP/IPv4)], and then click [Properties].

If the [Internet Protocol Version 4 (TCP/IPv4)] check box was clear, click the check box to select it.



4 Select [Use the following IP address], and then enter the network address you determined under P. 6 "Determining the Network Addresses".



5 Click [OK].

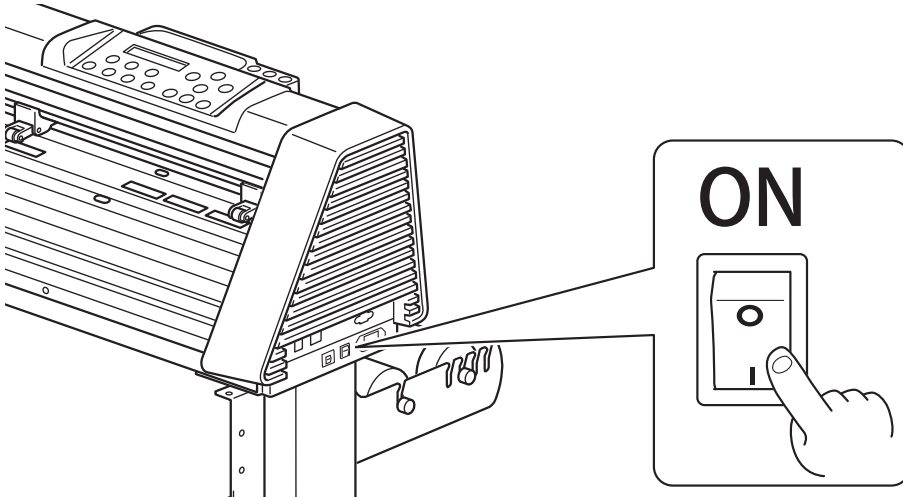
6 Close all the open windows.

Setting the Cutting Machine's Network

Procedure

1 Switch on the power.

Remove any material loaded in the machine.



2 Press [MISC] on the operation panel when the following screen appears.

If the paper sensor detects material, the following screen does not appear.

```
Off Line
Setup Mode
```

3 Press [◀] several times to display the screen shown below.

```
IP Address
Select: ◀ Ok: ENTER
```

4 Press [ENTER].

5 Set the IP address.

① Press [▲] or [▼] to enter the IP address you determined under P. 6 "Determining the Network Addresses".

Press [◀] or [▶] to move the cursor.

② Press [ENTER].

6 Set the subnet mask and default gateway in the same manner as step 5.

7 Switch off the power.

2. Installing the Driver

This section explains the procedure for installing the cutting machine driver on the computer. You can connect this machine to the computer using a USB cable, Ethernet cable, or RS-232C cable.

MEMO

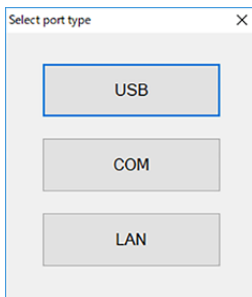
The driver cannot be installed if material is detected by the machine's paper sensor. Install the driver before setting up the material in the machine.

Installing the Driver (USB Connection)

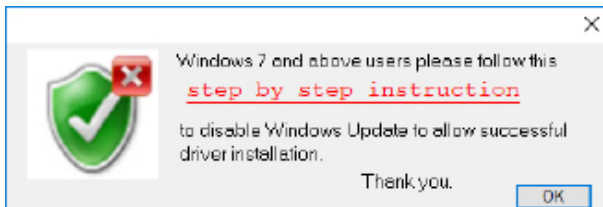
Follow the procedure to install the driver. Failure to follow the correct procedure may make installation impossible.

Procedure

- 1 Start Windows and log on as the "Administrator" or an "Administrators" account.**
Shut down all other programs.
- 2 Open the downloaded folder, and then double-click "Cutter_Plotter_driver.exe."**
The file name extension (.exe) may be hidden.
- 3 If a "User Account Control" window appears, click "Yes."**
If you're prompted to restart, click [Cancel].
- 4 When the following screen appears, select [USB].**



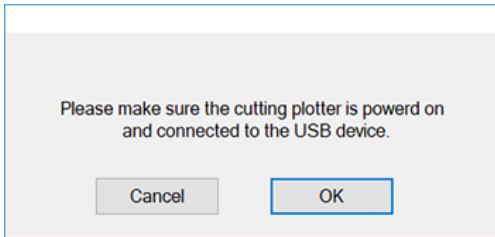
- 5 Check that automatic updating has been disabled in Windows Update, and then click [OK].**
Click the red text on the screen for detailed instructions.



- 6 Connect the machine to the computer with a USB cable and turn on the machine.**

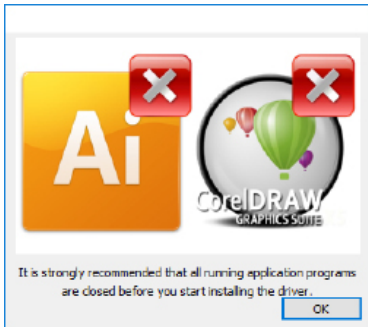
3. Installing the Driver

7 Click [OK].

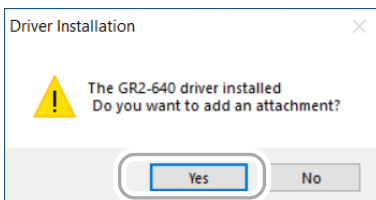


8 Check that all other applications have been shut down, and then click [OK].

The installation begins.

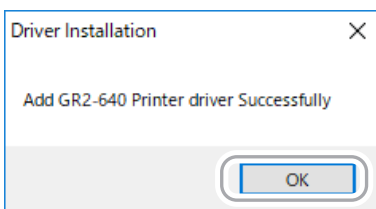


If the driver is already installed, the following screen will appear. Click "Yes."

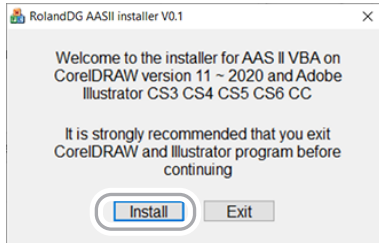


9 When the following message appears, click [OK].

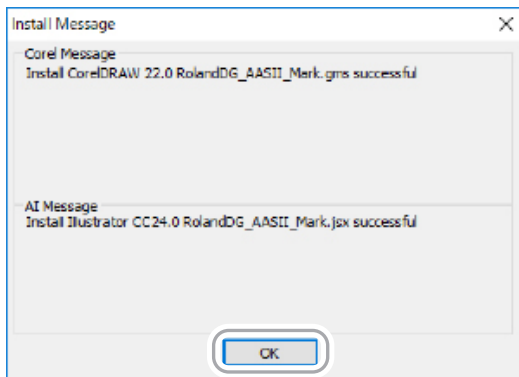
The driver installation is finished.



- 10** To install AAS II VBA in CorelDRAW and Adobe Illustrator, click [Install] when the following screen appears.



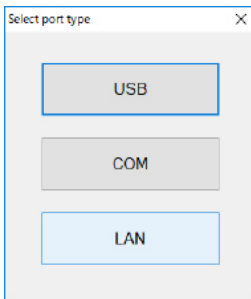
When the following screen appears, the installation is finished. Click [OK].



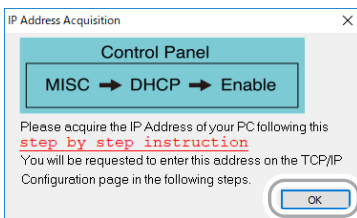
Installing the Driver (LAN Connection)

Procedure

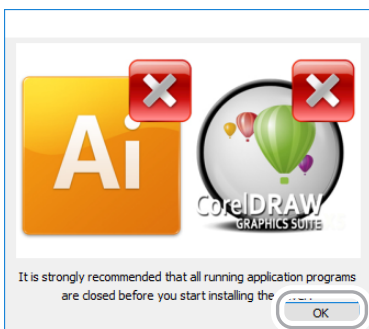
- 1 Start Windows and log on as the "Administrator" or an "Administrators" account.**
Shut down all other programs.
- 2 Open the downloaded folder, and then double-click "Cutter_Plotter_driver.exe."**
The file name extension (.exe) may be hidden.
- 3 If a "User Account Control" window appears, click "Yes."**
If you're prompted to restart, click [Cancel].
- 4 When the following screen appears, select [LAN].**



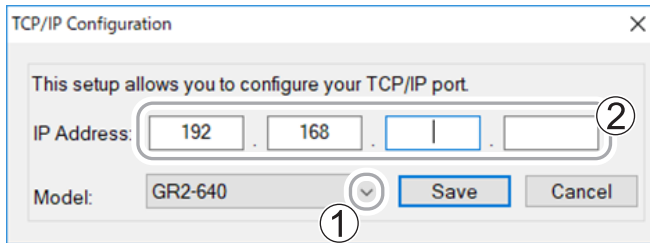
- 5 When the following screen appears, click [OK].**



- 6 Check that all other applications have been shut down, and then click [OK].**



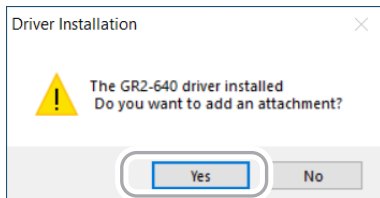
- 7** Select the model of the machine, and then enter its IP address, which you determined under P. 6 "Determining the Network Addresses".



- 8** Click [Save].

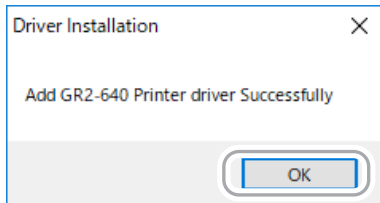
The installation begins.

If the driver is already installed, the following screen will appear. Click "Yes."

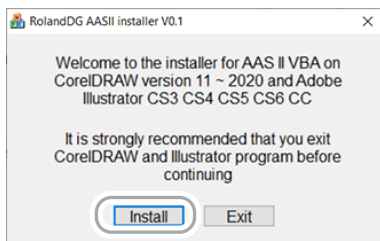


- 9** When the following message appears, click [OK].

The driver installation is finished.

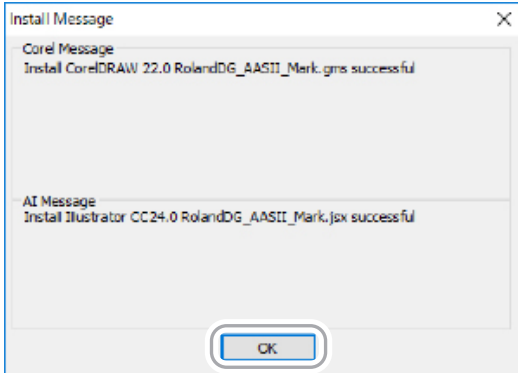


- 10** To install AAS II VBA in CorelDRAW and Adobe Illustrator, click [Install] when the following screen appears.



3. Installing the Driver

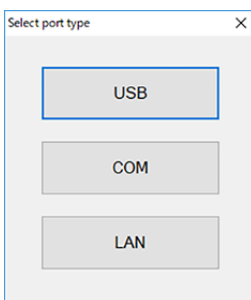
When the following screen appears, the installation is finished. Click [OK].



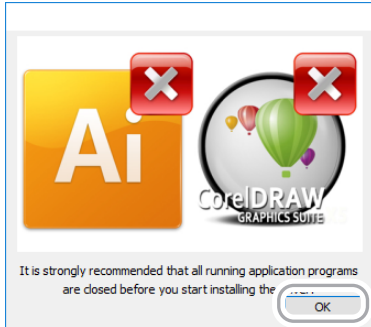
Installing the Driver (RS-232C Connection)

Procedure

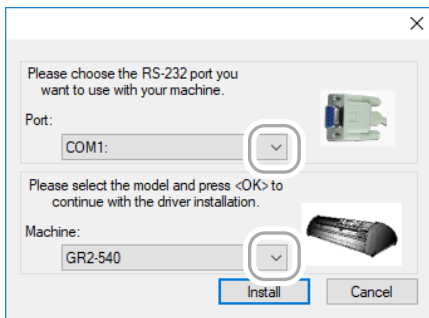
- 1 Start Windows and log on as the "Administrator" or an "Administrators" account.**
Shut down all other programs.
- 2 Open the downloaded folder, and then double-click "Cutter_Plotter_driver.exe."**
The file name extension (.exe) may be hidden.
- 3 If a "User Account Control" window appears, click "Yes."**
If you're prompted to restart, click [Cancel].
- 4 When the following screen appears, select [COM].**



- 5 Check that all other applications have been shut down, and then click [OK].



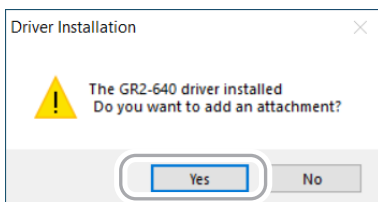
- 6 Select the communication port on the computer, and then use [Machine] to select the model of the machine.



- 7 Click [Install].

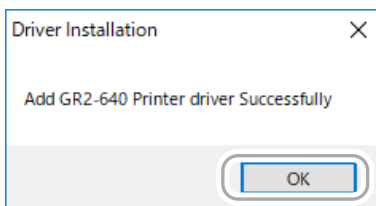
The installation begins.

If the driver is already installed, the following screen will appear. Click "Yes."



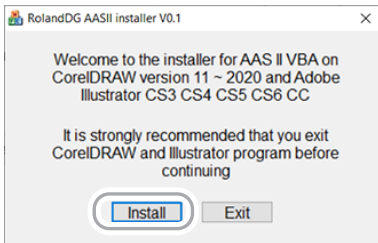
- 8 When the following message appears, click [OK].

The driver installation is finished.

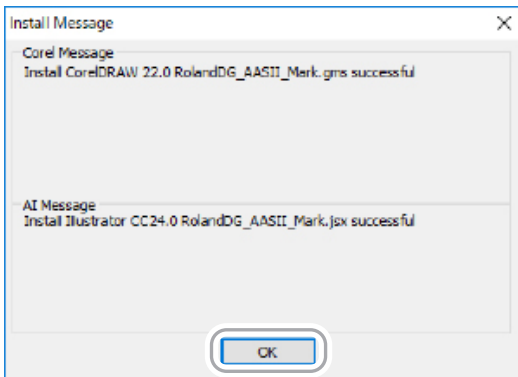


3. Installing the Driver

- 9 To install AAS II VBA in CorelDRAW and Adobe Illustrator, click [Install] when the following screen appears.



When the following screen appears, the installation is finished. Click [OK].



Setting RS-232C Communication

Check the communication settings of the machine and ensure they are the same as those of the computer. If they are different, the machine will not operate correctly.

Procedure

- 1 Turn on the machine.
- 2 Press [MISC] on the operation panel.
If material has been loaded in the machine, press [ON/OFF LINE] to switch to offline mode.
- 3 Press [◀] several times to display the screen shown below.

```
Set communication
Select: ◀ OK:ENTER
```

- 4 Press [ENTER], and then check the communication settings of the machine.
The current communication settings are displayed.

```
9600,n,8,1,F
Change: ▲▼ OK:ENTER
```

To change communication settings, press [▲] or [▼] and select from the following combinations.

Panel display	<ul style="list-style-type: none"> • 9600, n, 7, 1, p • 9600, o, 7, 1, p • 9600, e, 7, 1, p • 9600, n, 8, 1, p • 9600, o, 8, 1, p • 9600, e, 8, 1, p 	<ul style="list-style-type: none"> • 19200, n, 7, 1, p • 19200, o, 7, 1, p • 19200, e, 7, 1, p • 19200, n, 8, 1, p • 19200, o, 8, 1, p • 19200, e, 8, 1, p
Bits/second	9600 / 19200 bps Data transfer speed	
Parity	n: none / o: odd / e: even Method used to check if data is restored correctly	
Data bits	7/8 Data length (bit configuration)	
Stop bits	1	

5 Press [ENTER].

The changed communication settings are saved.

6 Log on to Windows as the "Administrator" or a member of the "Administrators" group.

Set communication on the computer.

7 Display the "Device Manager" screen.

Windows 10:

.....

① From the [Start] menu, click [Windows System], and then click [Control Panel].

② Click [Hardware and Sound], and then click [Device Manager].

Windows 8.1:

.....

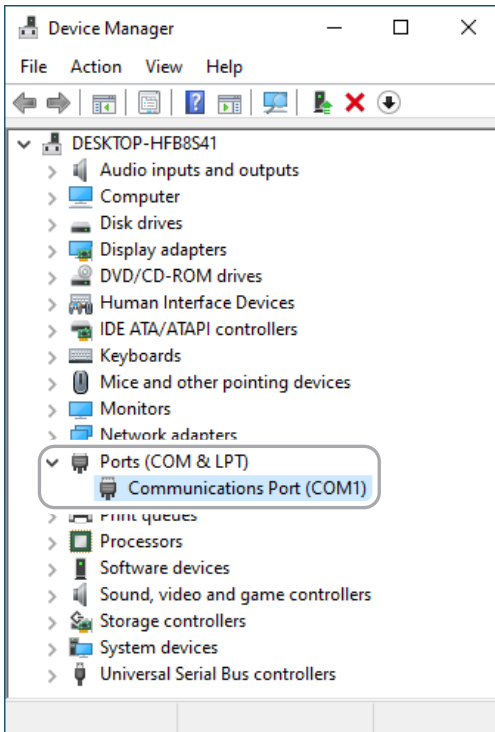
① From the [Start] menu, click [PC settings], and then click [Control Panel].

② Click [Hardware and Sound], and then click [Device Manager].

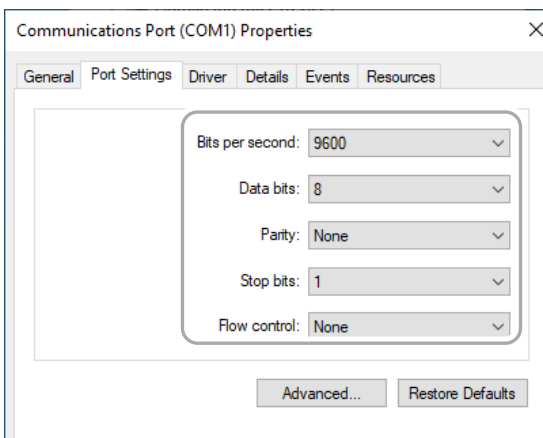
3. Installing the Driver

- 8 Click [Ports (COM & LPT)], and then click [Communications Port (COM1)] or [Communications Port (COM2)].

If [Ports (COM & LPT)] is not displayed in [Device Manager], turn on [Show hidden devices] in the [View] menu. Select the port connected to the RS-232C interface for the communication port.



- 9 Select the [Port Settings] tab, and then select the same values as the communication settings for the machine set in step 4. Select [None] for [Flow control].



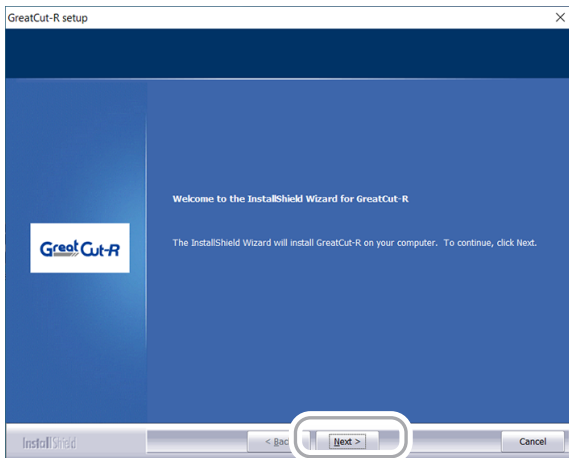
- 10 Click [OK].

3. Installing the Software

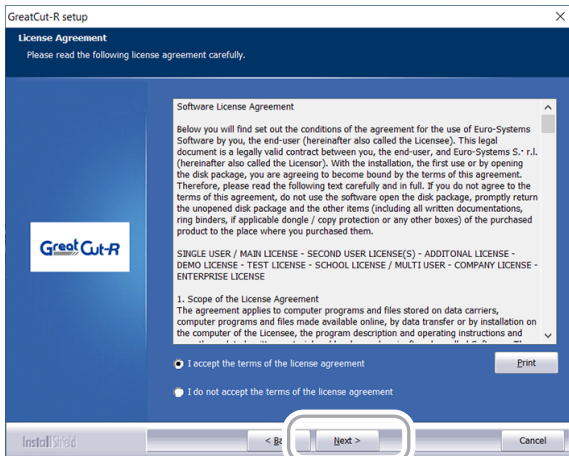
Installing GreatCut-R

Procedure

- 1 Start Windows and log on as the "Administrator" or an "Administrators" account.**
Shut down all other programs.
- 2 Open the downloaded folder, and then double-click "greatcut-r.exe."**
The file name extension (.exe) may be hidden.
- 3 If a "User Account Control" window appears, click "Yes."**
The wizard for preparing setup appears.
- 4 When the following screen appears, click [Next].**



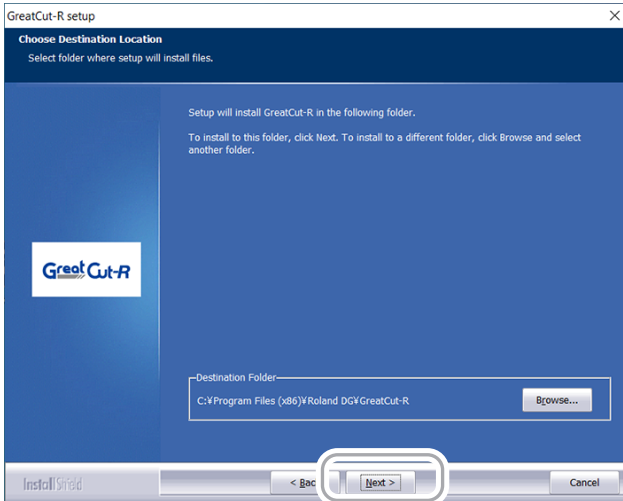
- 5 Click [Next].**
Select [I accept the terms of the license agreement] to enable the [Next] button.



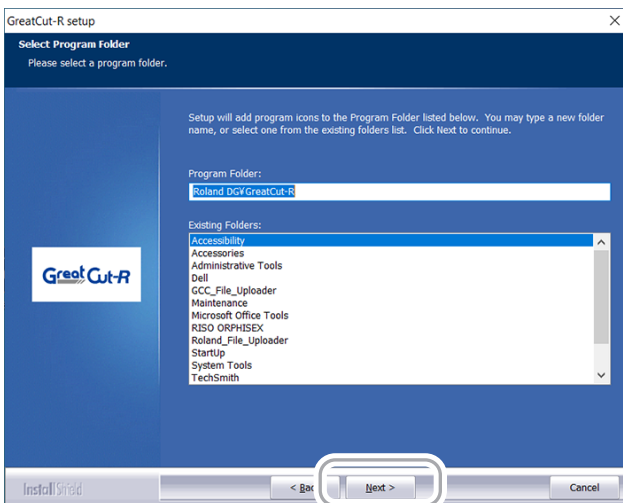
3. Installing the Software

6 Check the installation folder, and then click [Next].

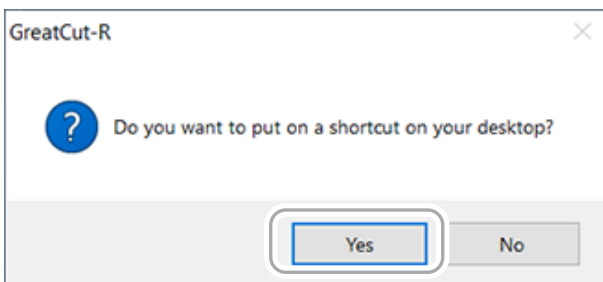
You can also click [Browse] to specify the installation folder.



7 Specify the folder to save, and then click [Next].

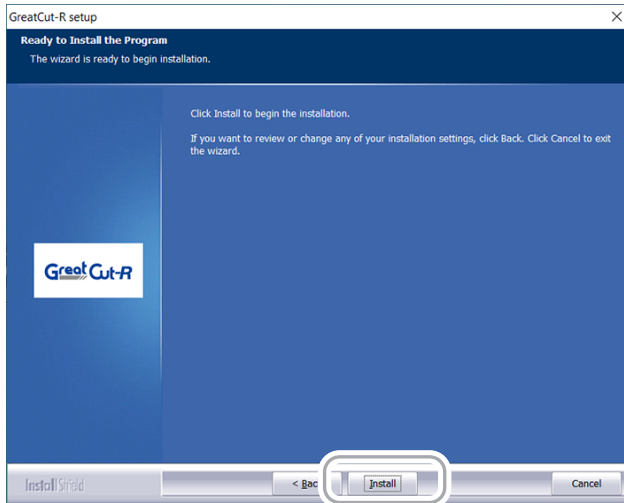


8 To create a desktop icon, click [Yes] on the following screen.



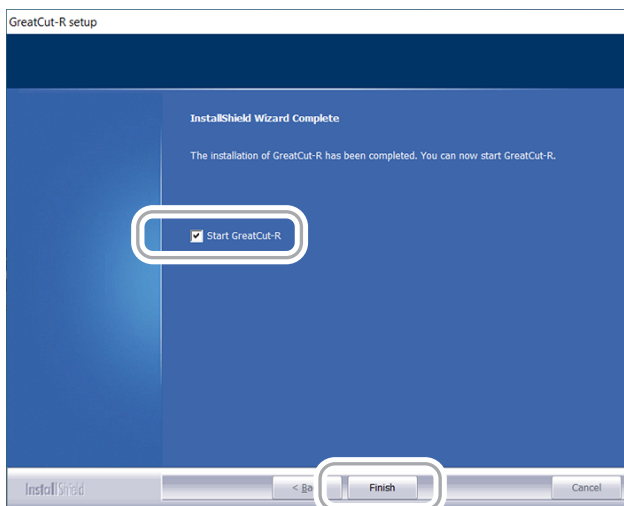
9 Click [Install].

The installation starts. Wait until the operation finishes.

**10 When the following screen appears, click [Finish].**

The installation is finished.

Select the [Start GreatCut-R] check box and exit the installer to start GreatCut-R and display the license authentication screen.



Performing License Authentication

The license authentication screen appears the first time GreatCut-R starts. Perform license authentication within 30 days of installing the software.

Each computer requires a separate license to install this software.



Click [License File], and then select the license file (.ecf) provided upon the completion of license registration. License information is read automatically.

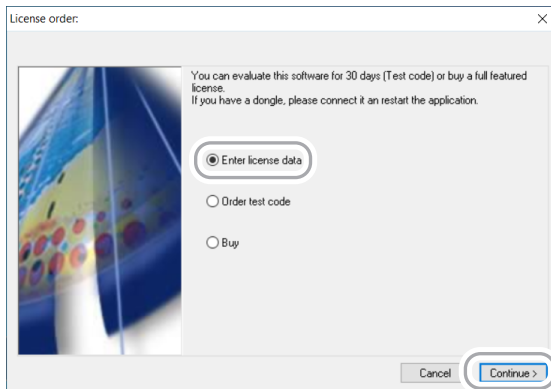
MEMO

- If license information is not read correctly, enter it manually.
- To perform license authentication at a later time, click [Cancel] to switch to the GreatCut-R editing screen. You can also perform license authentication by clicking [License File] or [License] on the [About] screen accessed from the [Help] menu.

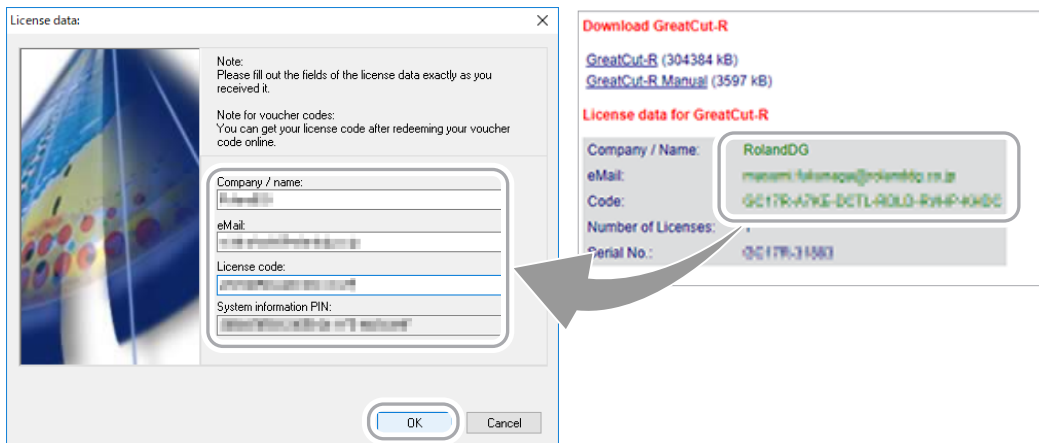
Entering License Information Manually

Procedure

- 1 Click [License] on the license authentication screen.
- 2 Select [Enter license data], and then click [Continue].
The screen for entering the license information appears.



- 3 Follow the link in the activation email sent upon the completion of license registration and enter the provided license information.
Enter the "Company / name," "Email," and "License code."



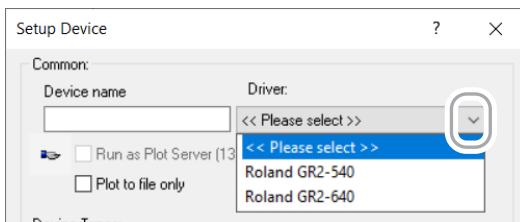
- 4 Click [OK].
You are returned to the license authentication screen. Click [Cancel] to switch to the GreatCut-R editing screen.

Setting the GreatCut-R Connection Method

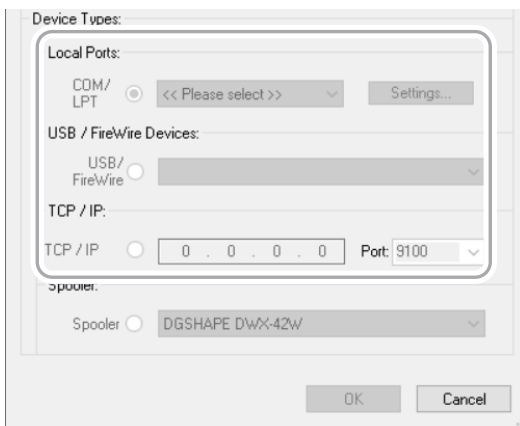
Set the device that will receive the jobs sent from GreatCut-R.

Procedure

- 1 Start GreatCut-R.
- 2 From the [Settings] menu, click [Standard Settings], and then click [Output Devices].
The [Setup Device] screen appears.
- 3 Use the [Driver] list to select the machine model.



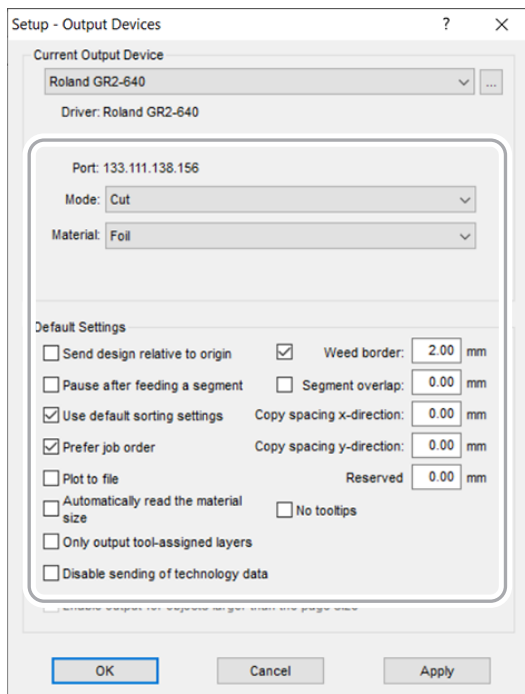
- 4 Select how to connect to the machine.
 - Connecting via a USB cable: Select [USB/FireWire], and then select the machine from the list.
 - Connecting via an Ethernet cable: Select [TCP / IP], and then enter the machine's IP address, which you determined under P. 6 "Determining the Network Addresses".
 - Connecting via RS-232C: Select [COM/LPT], and then select the communication port on the computer. Click [Settings], and then specify the communication settings determined under P. 16 "Setting RS-232C Communication".



- 5 Click [OK].
The [Setup - Output Devices] screen appears.

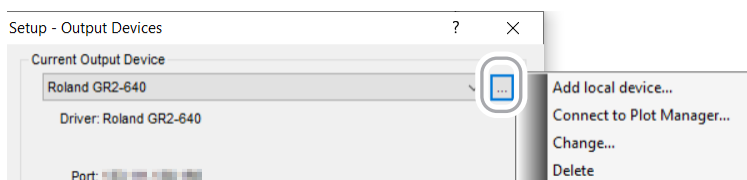
6 Configure the basic settings for output.

For details on these settings, refer to the GreatCut-R online help.



MEMO

To add an output destination machine or to change the IP address, click **...** under [Current Output Device], select [Add local device] or [Change] (respectively), and then configure the settings in the same manner as steps 3 to 5.



2. What to Do If

Driver	27
The Driver Cannot Be Installed Correctly (USB Connection)	27
Uninstalling the Driver	29
Other Information.....	31
Updating the Automatic Aligning System (AAS) Plugin.....	31
Uninstalling GreatCut-R.....	32

The Driver Cannot Be Installed Correctly (USB Connection)

When a USB cable is connected to the machine and a computer, the connection is detected automatically and [USB Printing Support] is displayed under [Universal Serial Bus controllers] in "Device Manager." If an error occurs in this detection, this item will not be displayed, and it will not be possible to install the driver.

Procedure

1 Log on to Windows as an administrator.

2 Display the "Device Manager" screen.

Windows 10:

- 1 From the [Start] menu, click [Windows System], and then click [Control Panel].
- 2 Click [Hardware and Sound], and then click [Device Manager].

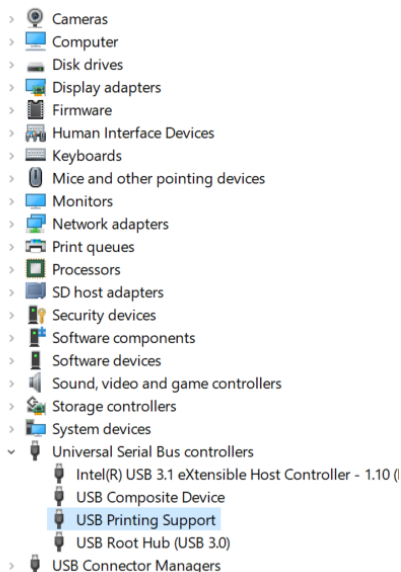
Windows 8.1:

- 1 From the [Start] menu, click [PC settings], and then click [Control Panel].
- 2 Click [Hardware and Sound], and then click [Device Manager].

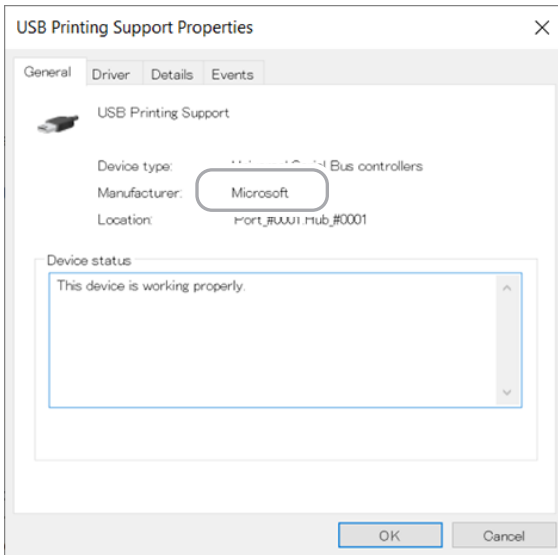
3 Check that [USB Printing Support] is displayed under [Universal Serial Bus controllers].

If [USB Printing Support] is not displayed, try the actions listed below, and then repeat steps 2 and 3.

- Check that the connected USB cable is the one included with the machine. Disconnect, and then reconnect this cable.
- If the computer has multiple USB ports, try changing to a different one.
- Try connecting to a different computer.



- 4 Right-click [USB Printing Support], and then click [Properties].
- 5 Check that "Microsoft" is displayed for [Manufacturer] on the [General] tab.



- 6 If you cannot confirm that this item is displayed with steps 3 and 4:
 - 1 At the same level as [Universal Serial Bus controllers], click [USB devices], right-click [USB PRINTER], and then click [Properties].
 - 2 Check that [Unknown] is displayed for [Manufacturer].
 - 3 Right-click [USB printers], and then click [Uninstall device].
 - 4 On the [Uninstall Device] screen, select the [Delete the driver software for this device] check box, and then click [Uninstall].
- 7 Disconnect, and then reconnect the USB cable.
- 8 Check that [USB Printing Support] is displayed under [Universal Serial Bus controllers] in the same manner as steps 2 and 3.
- 9 Carry out the procedure given under "Installing the Driver" to reinstall the driver.

Uninstalling the Driver

When updating the driver to a new version or reinstalling it, the installed driver must be completely removed from the computer.

When uninstalling the driver, perform the following procedure.

Procedure

- 1 **Turn off the machine.**
Disconnect the USB cable if it is connected.
- 2 **Log on to Windows as the "Administrator" or an "Administrators" account.**
- 3 **Open Control Panel and display the "Devices and Printers" screen.**

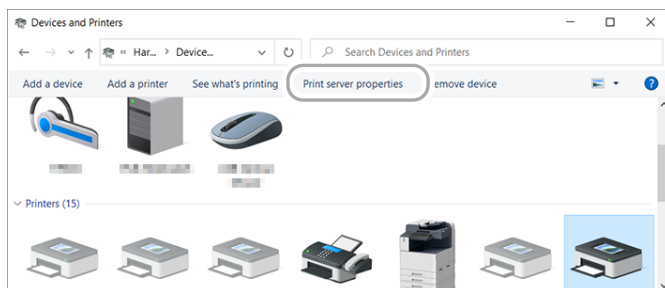
Windows 10:

From the [Start] menu, click [Windows System], [Control Panel], and then click [View devices and printers].

Windows 8.1:

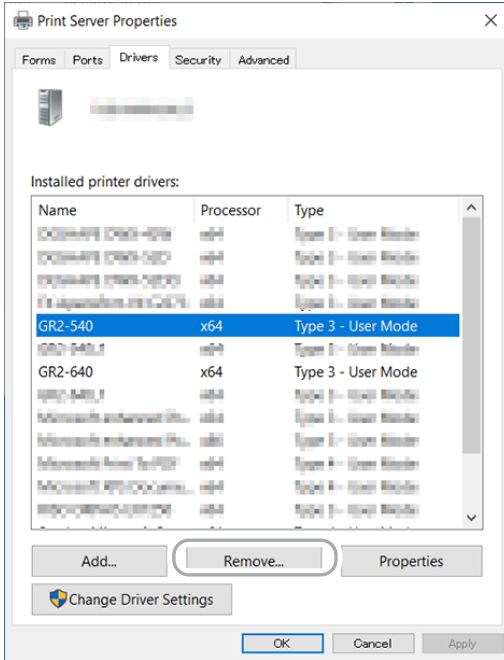
From the [Start] menu, click [PC settings], [Control Panel], [View devices and printers].

- 4 **Right-click the icon of the machine, and then select [Remove device].**
When a dialog box confirming that you want to remove the device appears, click [Yes].
- 5 **Click a device on the page, and then select [Print server properties].**
The [Print Server Properties] screen appears.

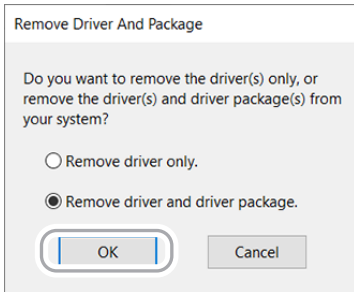


- 6 **Select the [Drivers] tab.**

7 Select the driver of the machine, and then click [Remove].



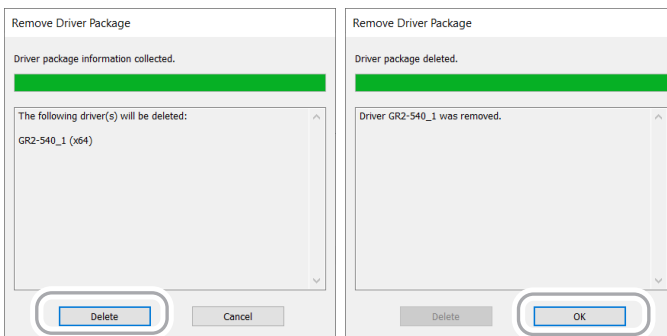
8 Select [Remove driver and driver package], and then click [OK].



9 When a removal confirmation dialog box appears, click [Yes].

10 When the following screen appears, click [Delete] then [OK].

The driver installed on the computer is completely removed.



Other Information

Updating the Automatic Aligning System (AAS) Plugin

If Adobe Illustrator or CorelDRAW is upgraded after installing the machine's driver, follow the procedure below to reinstall AAS II VBA.

Procedure

- 1 Display the "Devices and Printers" screen.

Windows 10:

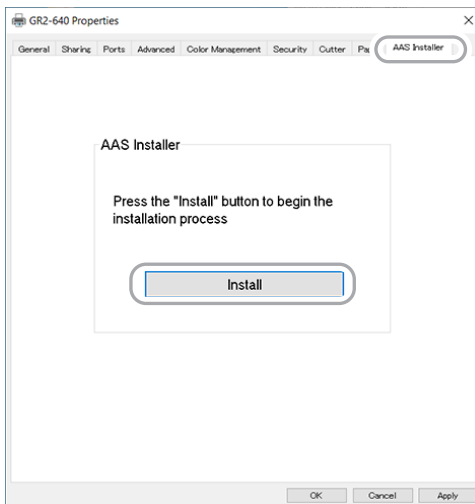
.....
From the [Start] menu, click [Windows System], [Control Panel], and then click [View devices and printers].

Windows 8.1:

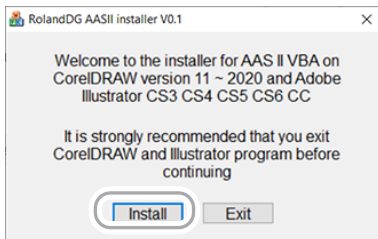
.....
From the [Start] menu, click [PC settings], [Control Panel], [View devices and printers].

- 2 Right-click the machine model, and then select [Printer properties].

- 3 Select the [AAS Installer] tab, and then click [Install].



- 4 On the following screen, click [Install].



- 5 When a message indicating that the installation is finished appears, click [OK].

Uninstalling GreatCut-R

Delete the target program by following the procedure exactly.

Procedure

- 1 Start Windows and log on as the "Administrator" or an "Administrators" account.
Shut down all other programs.

- 2 Display the screen for uninstalling programs.

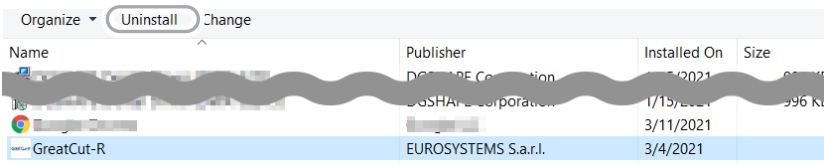
Windows 10:

From the [Start] menu, click [Windows System], [Control Panel], and then click [Uninstall a program].

Windows 8.1:

From the [Start] menu, click [PC settings], [Control Panel], and then click [Uninstall a program] (or [Programs and Features]).

- 3 Select [GreatCut-R], and then click [Uninstall].



- 4 If a "User Account Control" window appears, click "Yes."

- 5 On the following screen, select [Remove], and then click [Next].



- 6 When the [Confirm Uninstall] screen appears, click [OK].
The uninstallation begins. Wait until the operation finishes.

7 When the following screen appears, click [OK].

