

EPSON®
EXCEED YOUR VISION

F

SureColor® F-Series

Epson SureColor F6200

Epson SureColor F7200

Epson SureColor F9200

Dye-Sublimation Transfer



Better Performance. More Profit.

How do you reinvent the dye-sublimation transfer printer? You start by designing every component to work together, from the printhead and ink technology to the printer mechanism and software. The result? A high-performance dye-sublimation transfer printer designed with extreme reliability for true industrial-level production.

Introducing the all-new Epson® SureColor F-Series printer family

Developed using the latest advancements in performance imaging, like our Epson PrecisionCore® TFP® printhead, along with an all-new dye-sublimation transfer ink technology — Epson UltraChrome® DS with High-Density Black — the purpose-built Epson SureColor F-Series allows you to focus on what matters most: more profit.



The SureColor F-Series is designed exclusively for use with our Epson UltraChrome DS Ink and not for use with any other brands of inks or cartridges.

SureColor F-Series

F



44-Inch

High-Performance Cut-Sheet

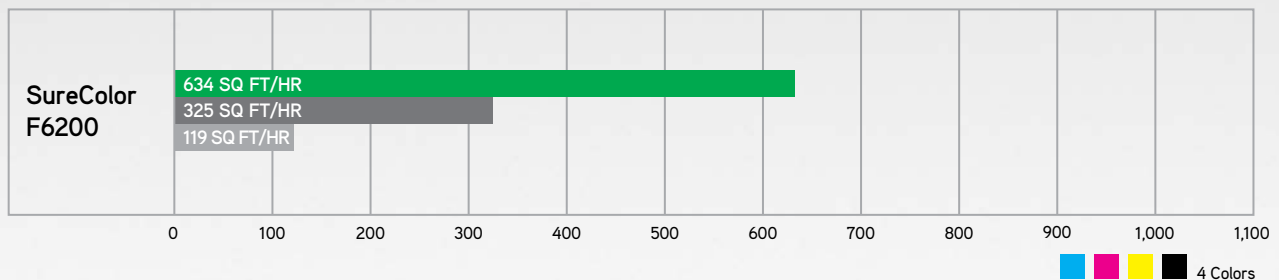


Reliable Everyday Performance

From high-end athletic wear and swimsuits to mouse pads and smartphone cases, the Epson SureColor F6200 is the perfect everyday dye-sublimation transfer printer. It's ideal for virtually any high-performance, cut-and-sew apparel application or custom specialty product. With its spindle-free roll media feeder, plus a built-in, high-speed automatic paper cutter, daily operation couldn't be easier. Designed for simple operation and easy maintenance, the 44" SureColor F6200 will transform your current workflow into a cleaner, simpler and more reliable process.

Print Mode¹

■ High Speed
 ■ Production Speed
 ■ High Quality



64-Inch

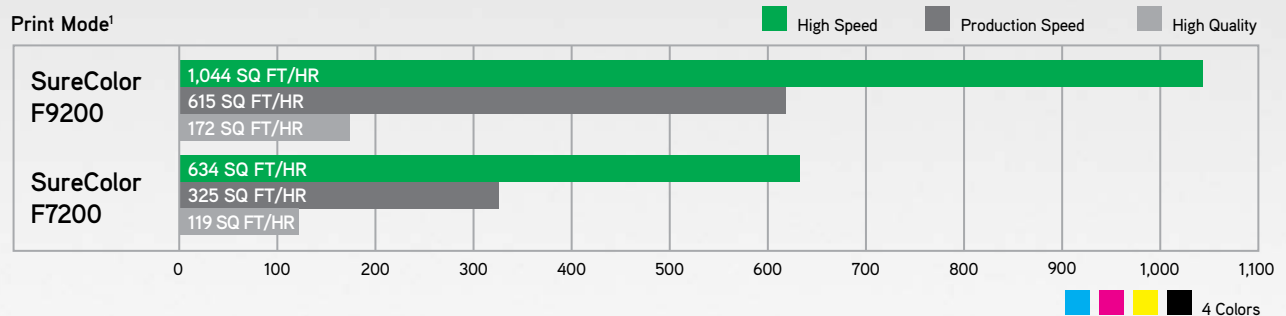
Robust Roll-to-Roll

SureColor
F7200 & F9200



Industrial-Level Production

The Epson SureColor F7200 and F9200 are precise roll-to-roll dye-sublimation transfer printers for industrial-level production of virtually any polyester-based textile manufacturing or soft signage application. With a robust 64"-wide media feeding and take-up system — along with up to 3.0 liter refillable ink tanks² — the SureColor F7200 and F9200 can reliably print roll-to-roll fully unattended. And, with the purpose-built Epson PrecisionCore TFP printhead — developed exclusively for Epson UltraChrome DS Ink — the final output offers exceptional quality and durability.



Brilliant Color and Detail

Epson UltraChrome DS Ink technology produces exceptionally vibrant colors, rich blacks and sharp contours. Your final output is simply stunning. Exactly what you'd expect from Epson.



F-Series

True Roll-to-Roll Production

Enhanced productivity for unattended long-length print runs, with a highly accurate take-up reel system to support efficient calendar heat press transfer.

Unleash Your Creativity

With the accuracy of our Epson PrecisionCore TFP printhead technology, fonts and line-art are exceptionally sharp. Now your product designs are limited only by your designers' imaginations.

Fully Customized Apparel Production

From one to 1,000, digital dye-sublimation transfer printing allows for more efficient production of customized apparel and specialty products — a true competitive advantage.



Vibrant Soft Signage Production

Epson SureColor F-Series printers produce vibrant flags, banners and backlight displays faster — and with lower operating costs — than most printing technologies available in the market today.



Promotions and Specialty Items

The SureColor F-Series printers are high-speed, cost-effective solutions for producing high-quality, high-volume customized items like mugs, mouse pads, phone cases and more.



Epson UltraChrome DS Ink

With a dedicated team of chemical engineers, Epson developed an all-new dye-sublimation transfer ink technology exclusively for the SureColor F-Series printers. Utilizing only four colors, Epson UltraChrome DS Ink produces vivid color and rich blacks with high definition and sharpness. Along with extremely fast dry times and exceptional dye-sublimation transfer characteristics, your final output will simply amaze.

New High-Density Black Ink

The core Black ink chemistry used within Epson UltraChrome DS Inks efficiently produces an exceptionally rich black that delivers enhanced color contrast and dramatic color intensity.



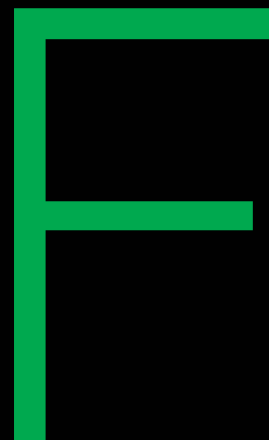
Epson Dye-Sublimation Media

To optimize the exceptional transfer performance of Epson UltraChrome DS Ink, Epson developed three new transfer papers: Multi-Purpose, Adhesive Textile and Production.



New F9200 Dual High-Capacity Refillable Ink Tanks

It's all about productivity. This easy-to-use, bulk-ink delivery system provides for longer maintenance intervals, while significantly reducing your final ink cost and plastic waste.



OEKO-TEX® Certification³

Epson UltraChrome DS Ink is certified by ECO PASSPORT, an international safety standard in the textile industry, meaning it's safe for adults, children and babies.



SureColor F-Series Rewards Program

Accumulate points with every purchase of Genuine Epson Inks and Papers that can be redeemed for discounts on extended service coverage and even discounts on additional SureColor F-Series printers.



Environmentally Friendly

Epson sells Epson UltraChrome DS Inks in a unique 1 liter, refillable bag. This eliminates the problem of disposing of multiple plastic ink bottles, therefore significantly reducing your overall waste.



Advanced Printhead Technology

Specifically designed for the SureColor F-Series printers, our latest Epson PrecisionCore TFP printhead was developed to work exclusively with our unique Epson UltraChrome DS Ink. This results in exceptional ink efficiency, along with a higher level of printhead reliability. Finally, a purpose-built dye-sublimation imaging technology designed for serious, reliable production.



Reliable Production

By designing the ink and printhead technology to work together, a major failure point is significantly reduced or removed altogether. The result? A more reliable production workflow.



Seriously Fast Production Speeds

Capable of daily print speeds up to 1,044 square feet per hour,¹ these printers dramatically increase your daily production, while freeing up valuable floor space by reducing the number of printers required.





**PrecisionCore TFP
Printhead Technology**

Epson achieves unprecedented printhead reliability by specially assembling the printhead to handle the unique characteristics of Epson UltraChrome DS Ink.

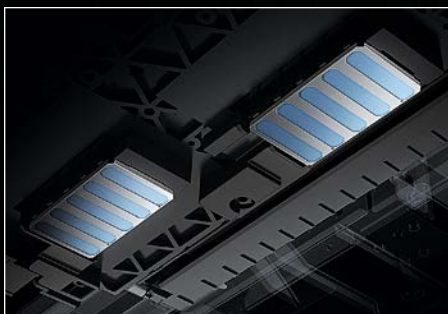


**Outstanding
Performance**

Our latest printhead technology utilizes a full 1"-wide printhead with 720 nozzles per color, for truly industrial-level production speeds.

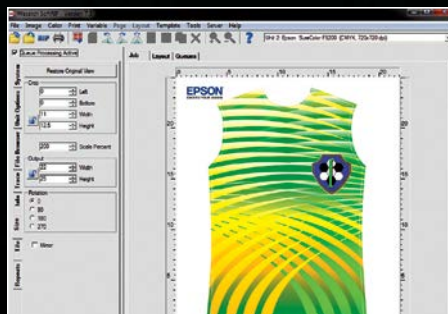
Dual-Array PrecisionCore Printhead

Featuring two PrecisionCore TFP printheads in a staggered array, the SureColor F9200 is capable of producing everyday, sellable-quality fabric transfers at print speeds up to 615 square feet per hour!



Powered by Wasatch SoftRIP

Each SureColor F-Series printer includes a full version of Wasatch SoftRIP with full support for color management, print cost estimation and even color profiles for the Epson line of transfer papers.



World-Class Service and Support

Unlike most dye-sublimation printers, every SureColor F-Series comes standard with an on-site warranty, including free phone support. And did we mention everything is covered? Even the printhead!



Epson SureColor F-Series Dye-Sublimation Printer Specifications

Printing Technology

Advanced PrecisionCore TFP printhead with ink-repelling coating technology

Ink Type

UltraChrome DS with High-Density Black ink; 4-color

Nozzle Configuration

Color and monochrome heads
F6200 and F7200 720 nozzles per color
F9200 1,440 nozzles per color

Droplet Technology

Smallest droplet size 5.3 picoliters
Variable Droplet Technology can produce up to three different sizes per line

Maximum Resolution

1440 x 720 dpi; 720 x 720 dpi; 720 x 360 dpi

Epson Ink Supply System

Ink pack volume 1,000 mL
Ink pack shelf life 2 years from printed production date

Printer Interfaces

Includes as standard one USB 2.0 (1.1 compatible) and one Gigabit Ethernet port (10/100/1000Base-T)

Wasatch SoftRIP Requirements

Minimum PC requirements
Windows® 10, 8, or 7, 2.0 GHz processor, 2GB memory, and 120GB hard drive
Recommended PC configuration
Windows 10, 8, or 7 (64-bit), 3.0 GHz quad core processor, 8GB memory, and 1TB or larger solid-state drive

Operating Systems Supported⁵

(Printer without RIP)

Windows 10, 8.1, 8 and 7 (32-bit, 64-bit)

Weight and Dimensions (W x D x H)

Printer weight
F6200 207 lb
F7200 605 lb
F9200 635 lb

Dimensions
F6200 63" x 36" x 45"
F7200 103" x 40" x 52"
F9200 103" x 40" x 52"

Media Heating System (F7200/F9200)

Post heater Off or 86 ° to 131 °F
Independently controlled via control panel or front-end RIP

Media Handling

Media input
F6200 Single roll-to-cut sheet
F7200/F9200 Single roll-to-roll

Roll width
F6200 10" up to 44" wide
F7200/F9200 12" up to 64" wide

Media core 2" or 3" core

Input roll diameter
F6200 Up to 5.9"
F7200/F9200 Up to 9.8"

Input roll weight
F7200/F9200 Up to 90 lb

Media thickness
F6200 From 75 gsm up to 0.5 mm thick
F7200/F9200 From 75 gsm up to 1.0 mm thick

Take-up reel
F7200/F9200 Fully automatic "wind in" or "wind out" with +/- 5 mm accuracy

Printable Area and Accuracy

Max. paper width
F6200 44"
F7200/F9200 64"

Min. paper width
F6200 10"
F7200/F9200 12"

Left and right margins 0.2" (0.4" total)

Max. printable area
F6200 43.6"
F7200/F9200 63.6"

Acoustic Noise Level

Approx. 59 dB according to ISO 7779

Environmental Characteristics

Temperature
Operating 59 ° to 95 °F (15 ° to 35 °C)
Recommended 59 ° to 77 °F (15 ° to 25 °C)

Relative Humidity
Operating 20 – 80%
Recommended 40 – 60%

Electrical Requirements

Voltage AC 110 – 120 V,
AC 200 – 240 V

Frequency 50 – 60 Hz

Current
F6200 1.0 A at AC 110 – 120 V or
0.5 A at AC 200 – 240 V
F7200 10.0 A at AC 110 – 120 V or
5.0 A at AC 200 – 240 V
F9200 10.0 A at AC 110 – 120 V or
5.0 A at AC 200 – 240 V

The F7200 and F9200 printers require two outlet connections

Power Consumption

Operating
F6200 65 W
F7200 460 W
F9200 760 W

Standby
F6200 20 W
F7200 330 W (Heater On), 30 W (Heater Off)
F9200 458 W (Heater On), 8 W (Heater Off)

Power Off Less than 1 W or less

Sleep Mode
F6200 Less than 3 W
F7200 10 W
F9200 11 W

Product Part Number

Epson SureColor F6200 SCF6200PS
Epson SureColor F7200 SCF7200PS
Epson SureColor F9200 SCF9200PE

F6200 Accessories

Additional Head Maintenance Kit C13S210042
Additional Roll Media Adapters C12C811391
Replacement Cutter Blade S902006
Additional Waste Ink Bottle C13T724000

F7200/F9200 Accessories

Printer Maintenance Kit S210038
Additional Cap Cleaning Kit C13S210053
Additional Media Edge Guides C932121
Additional Waste Ink Bottle C13T724000

UltraChrome DS Inks²

Cyan Ink (6x 1,000 mL packs) T741200
Magenta Ink (6x 1,000 mL packs) T741300
Yellow Ink (6x 1,000 mL packs) T741400
High-Density Black Ink
(6x 1,000 mL packs) T741X00

Extended Service Plans⁴

Additional Year Epson PreferredSM Plus Service
F6200 EPPF60SB1
F7200 EPPF70SB1
F9200 EPPF90SB1

- 1 Print times are based upon print engine speeds only. Total throughput depends upon front-end driver/RIP, file size, printing resolution, ink coverage, network speed, etc.
- 2 The SureColor F-Series printers are designed to be used exclusively with UltraChrome DS Inks and not with any other brands of cartridges or inks. Using Epson genuine ink is important for reliable performance and high image quality.
- 3 ECO PASSPORT by OEKO-TEX is a system by which textile chemical suppliers demonstrate that their product can be used in a sustainable textile production. Epson UltraChrome DS Ink is certified by the ECO PASSPORT. This is an international safety standard in the textile industry. It is certified to be safe for adults and children, including babies.
- 4 Note that warranty coverage for the printhead and ink delivery system is terminated if the printer is ever used with new or refilled ink cartridges, inks, or ink delivery systems other than the UltraChrome DS system for which the printer was designed. Subject to terms and conditions found in your limited warranty. See www.epson.com/support
- 5 For the latest drivers, visit www.epson.com/support

EPSON
EXCEED YOUR VISION

Epson America, Inc. 3840 Kilroy Airport Way, Long Beach, CA 90806
Epson Canada Limited 185 Renfrew Drive, Markham, Ontario L3R 6G3
Please visit us at proimaging.epson.com | proimaging.epson.ca

EPSON ULTRACHROME
DS INK

Better Products for a Better FutureSM

eco.epson.com

Specifications and terms are subject to change without notice. EPSON, PrecisionCore, SureColor, TFP and UltraChrome are registered trademarks, EPSON Exceed Your Vision is a registered logomark and Better Products for a Better Future is a trademark of Seiko Epson Corporation. Epson Preferred is a service mark of Epson America, Inc. Windows is either a registered trademark or trademark of Microsoft Corporation in the United States and/or other countries. All other product and brand names are trademarks and/or registered trademarks of their respective companies. Epson disclaims any and all rights in these marks. Copyright 2017 Epson America, Inc. CPD-50505 XXK 5/17 XX