

SureColor F2100

Garment Creator Software Setup for
Digital Transfer Film (DTFilm) Printing



Foreword

The Epson SureColor F2100 print system prints directly to garments (DTG) or to digital transfer film (DTFilm). DTFilm printing expands the range of fabric materials and product shapes that can be decorated. The setup instructions provided in this guide are general settings to use as a starting point. Please consult your DTFilm material supplier for optimal settings.

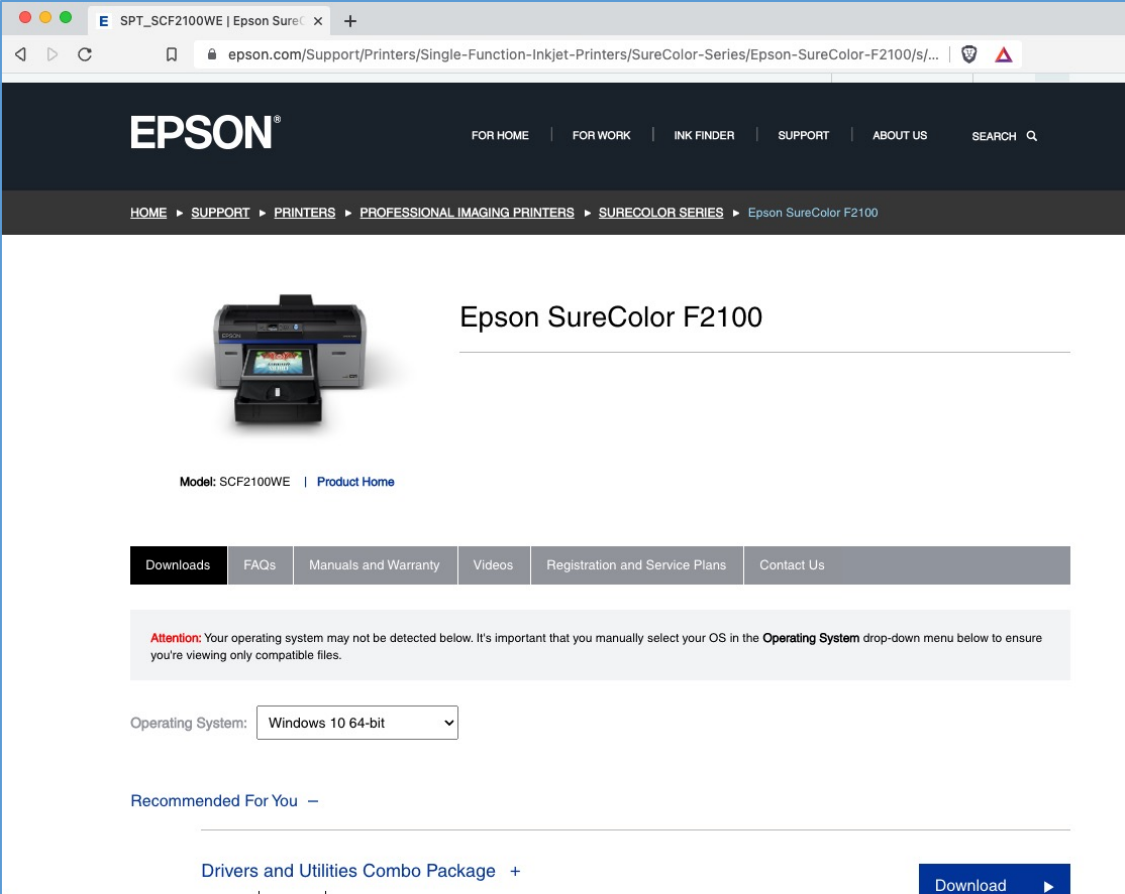
CAUTION: Applying pretreatment and/or adhesive powders near the printer can result in damage. Please take care as this damage is not covered by your warranty. Any damage caused by misuse, abuse, improper installation, neglect, failure to maintain, improper packing or shipping, disasters such as fire, flood, lightning, improper electrical currents, software problems, or interaction with non-Epson products is excluded from warranty coverage.

Follow manufacturer's recommendation for safety and handling when applying pretreatment and adhesive powder.

This guide is for use only in United States and Canada

Software Installation

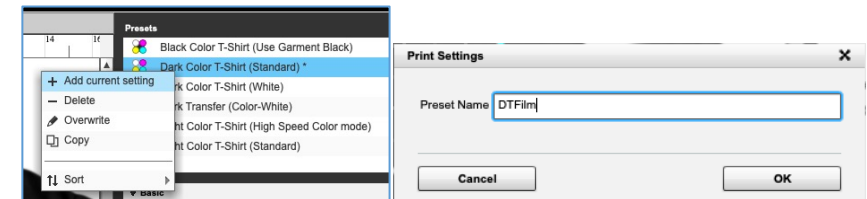
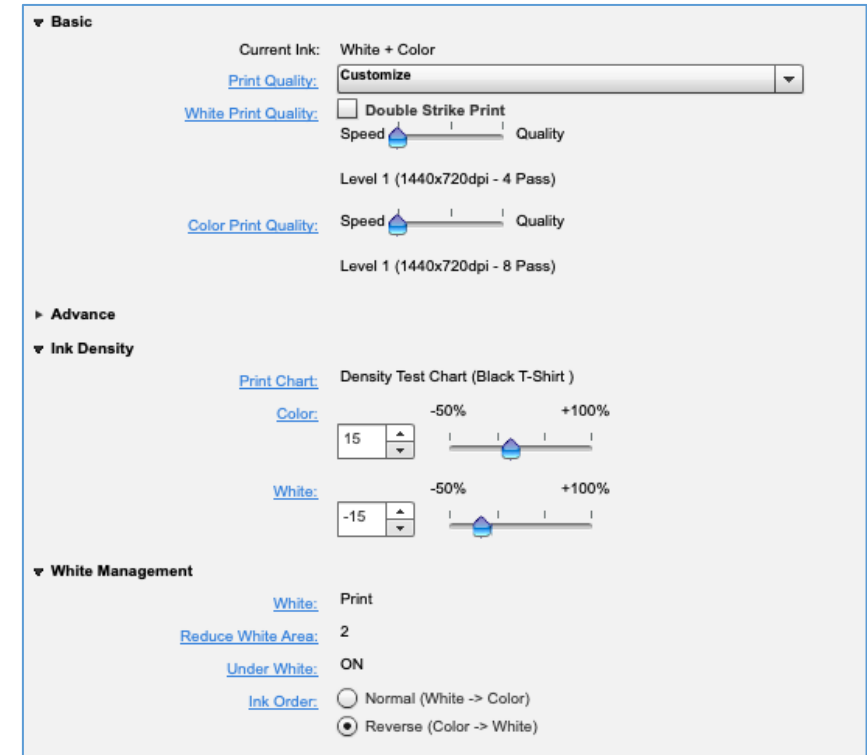
1. Download the latest version of Garment Creator
<https://www.epson.com/Support>
2. Install Garment Creator
3. Download the Ink Layer Order Feature Enablement Utility
4. Run the utility




The screenshot shows the Epson support website for the Epson SureColor F2100 printer. The page features the Epson logo at the top, navigation links for 'FOR HOME', 'FOR WORK', 'INK FINDER', 'SUPPORT', 'ABOUT US', and 'SEARCH'. The breadcrumb trail indicates the path: HOME > SUPPORT > PRINTERS > PROFESSIONAL IMAGING PRINTERS > SURECOLOR SERIES > Epson SureColor F2100. A central image of the printer is displayed, with the model number 'Model: SCF2100WE' and a 'Product Home' link below it. A horizontal menu contains links for 'Downloads', 'FAQs', 'Manuals and Warranty', 'Videos', 'Registration and Service Plans', and 'Contact Us'. An attention message states: 'Attention: Your operating system may not be detected below. It's important that you manually select your OS in the Operating System drop-down menu below to ensure you're viewing only compatible files.' Below this, the 'Operating System' is set to 'Windows 10 64-bit'. A 'Recommended For You' section shows a 'Drivers and Utilities Combo Package' with a 'Download' button.

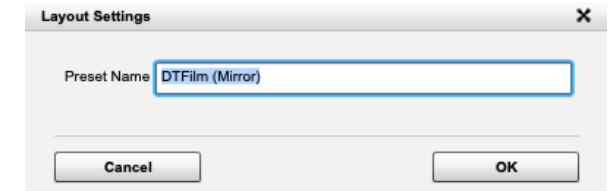
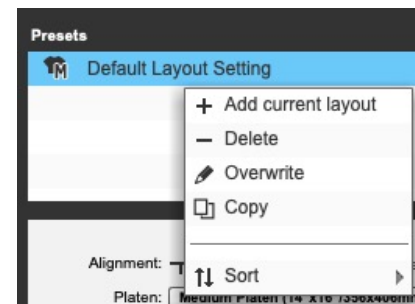
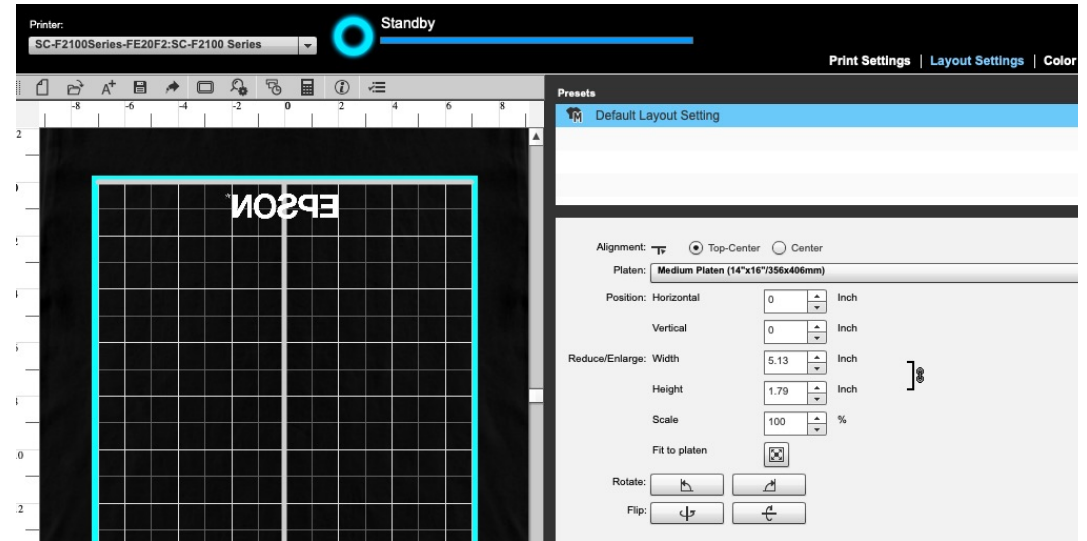
Creating a Print Preset

1. Open Garment Creator
2. Select Preset *Dark Color T-Shirt (Standard)*
3. Adjust the print settings to:
 - Basic | White Print Quality – **Uncheck** Double Strike Print
 - Basic | White Print Quality – **Level 1 (1440x720dpi – 4 Pass)**
 - Basic | Color Print Quality – **Level 1 (1440x720dpi – 8 Pass)**
 - Ink Density | Color: **+15**
 - Ink Density | White: **-15**
 - White Management | Ink Order: **Reverse (Color -> White)**
 - *The settings above are general recommendations. Consult your DTFilm supplier for specific print settings to use.*
4. Save as new preset by right clicking with mouse on the **Dark Color T-Shirt (Standard)** Preset and selecting **+ Add current setting** from the menu. Use a descriptive name for the preset, such as *DTFilm* and click OK



Creating a Layout Preset

1. Click Layout Settings towards the top right of the screen
2. Select Preset *Default Layout Settings*
3. Open an image
4. Adjust the settings to:
 - Alignment | Top-Center
 - Flip: Click on  button. The image be will mirrored.
5. Save as new layout preset by right clicking with mouse on the **Default Layout Setting** Preset and selecting **+ Add current setting** from the menu. Use a descriptive name for the preset, such as *DTFilm (Mirror)* and click OK





EPSON[®]

**Enrich lives and help create a
better world through efficient,
compact, and precise innovation.**

