



# ROVIN CERAMICS

A MOTAWI COMPANY

## GEOMETRIC HANGING WALL PLANTER

### WALL PLANTER VOCABULARY

**Notch/Hole:** These are cut into the back of the planter in order for it to hang

**Equilateral Triangle:** A triangle in which all three sides are an equal length.

### MATERIALS

Cardstock Paper	X-Bevel or Pony Roller
Scissors	Scoring Tool
Ruler	Trim Tool
R0-82/R0-82m Clay	Knife
or other Lowfire Clay	Finishing Sponge
Slabroller or Rolling Pin	Metal Rib

### PROCESS

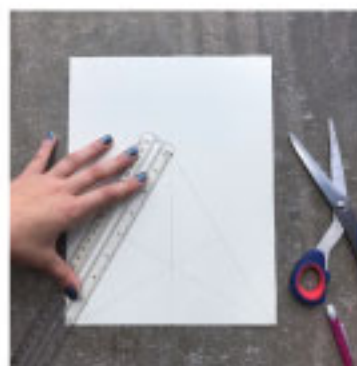
1. Make plans for what size you want the planter to be by creating a template triangle out of cardstock. As long as it's an equilateral triangle, you can make up to 8" or 9" inch triangles.

2. Prepare a large slab with either a slabroller or a rolling pin. Roll the clay out to be about 1/4" inch in thickness.

3. Take your metal rib and smooth out the surface of the slab. Then flip the slab over and repeat on the other side. You can also choose to use a texture tool-stamps, texture rollers, etc- to create a fun texture on the slab instead of a smooth surface.

4. Lay your triangle template on top of your slab and use your knife to cut along the edges of the template. Cut out a total of three triangles. Three triangles are used to make one planter.

5. Take your triangle slabs and place them face down on your work surface (if you made textured slabs, place them texture side down). Then select one slab to be the back of the planter. You are now going to create either notches or holes in the back of the slab as a method to hang it when its finished. There are two methods to do







# ROVIN CERAMICS

A MOTAWI COMPANY

**"Invisible" Notch-** Create two notches in the back of the slab using the trim tool, but don't cut all the way through the slab. These notches will be able to rest on a nailhead without being seen.

**Hole Method-** Using a trim tool, cut two holes into the slab. These holes will fit over a nailhead and the nails will be visible.

6. You are now going to create a beveled edge along two sides of each triangle slab. There are two methods to do this:

**Pony-Roller Method-** Place the pony roller at an angle along the edge of a triangle slab and roll against it until the edge is beveled to about a 45 degree angle. Repeat on opposite edge of the triangle slab.

**X-Bevel Method-** Use the 45 degree angle of the X-bevel tool and align it with the edge of the slab. Pull the tool through the slab and it will cut a 45 degree beveled edge on your triangle. Repeat on opposite edge of the triangle slab.

7. Score the beveled edges of your slabs, wet the edges (with water or slip), and press the edges together. Be sure to compress the edges of these triangles together well to ensure they'll stick. Also check the inner seams on the inside of the planter and make sure there are no gaps between the slabs.

8. Take your finishing sponge and run in over the edges and the surface of the triangle to give it an even and smooth finish. (If you did textured slabs you can adjust your surface as you see fit).

**ADDITIONALLY:** You can cut two smaller triangle slabs and slip and score them anywhere on the outside of your larger planter for a two tier planter.

## GLAZE

You can glaze the outside of your planters however you want. Just be sure to not glaze the inside because you need the inner walls of the planter to be porous enough to hold dirt and water for plants.

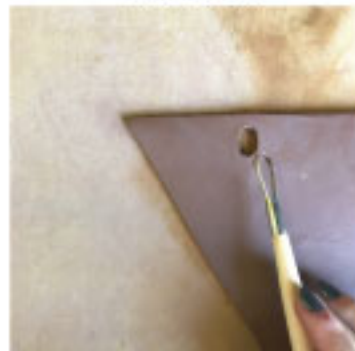
## PLANTS

These planters are great for air plants and succulents, nothing too heavy. Fill them up with some cute little plant buddies and hang it on a wall.

"Invisible" Notch



Hole Method



Pony-Roller Method



X-Bevel Method

