

Reuss Epic Overdrive

two complementary overdrive circuits running in parallel, which can be freely mixed and balanced, and even mixed with clean sound

Working principle

The Epic Overdrive is unique in the way it lets you blend and balance two complementary overdrive circuits.

Drive 1 is a classic 'TS' circuit with the inherent 'mid-range' hump and nice, gritty texture and compression.

Drive 2 is a completely different kind of overdrive circuit, featuring twin clipping stages and a smooth, natural and transparent sound with a slight mid-range 'scoop'.

The two overdrives are routed in parallel, which means that the input is split in two and feeds directly into both circuits. This is different from typical 'two-in-one-pedals' where the two circuits are wired in series ('stacked'). One feeding into the other.

The outputs of the two individual drive circuits of the Epic Overdrive are combined in a mixer, controlled by the 'DRIVE MIX' knob. This combined sound then hits another mixer which allows you to mix any amount of clean sound into the drive sound.

Controls

- 'DRIVE 1' adjusts the overdrive level of the TS circuit
- 'TONE 1' is the TS circuit tone control. Turning it clockwise makes the sound brighter
- 'DRIVE 2' adjusts the overdrive level of the alternative drive circuit. The range of this knob can be adjusted via a trimmer inside the pedal (see 'Internal custom settings')
- 'TONE 2' is the tone control of the alternative drive circuit. Turning it clockwise makes the sound brighter
- 'DRIVE MIX' mixes the output of the two overdrive circuits. All the way counterclockwise is pure Drive 1. All the way up is pure Drive 2
- 'CLEAN MIX' allows you to mix your clean sound into the overdrive sound. More clean sound is mixed in as the knob is turned clockwise. No clean all the way down. Pure clean sound all the way up (the pedal will function as a clean boost in this setting)
- 'LEVEL' adjusts the output level of the pedal



Internal custom settings (see photo next page)

- **TS SETTINGS Switch 1:** Fat switch for DRIVE 1 (TS). Low frequency response is extended one octave down when the switch is in 'ON' position. In 'NORMAL' mode the lows are cut from 720 Hz (stock TS mode). Pedal ships in 'FAT' mode.
- **TS SETTINGS Switch 2:** Clipping diode switch. 'ON' is symmetric clipping (stock TS mode). OFF is asymmetric clipping (like Boss SD-1). Pedal ships in symmetric clipping mode.
- **GAIN MOD:** This switch activates the trimmer pot which limits the range of the DRIVE 2 control. The trimmer is active with the switch in 'ON' position. Turning the trimmer counterclockwise increases the limiting. Pedal ships in GAIN MOD 'ON' mode.
- **FAT MOD:** This switch extends the low-end response of the DRIVE 2 circuit one octave down in 'ON' mode. It has a more dramatic effect than the TS Fat switch due to the nature of this circuit, which already has more bass than the TS in normal mode. This Fat switch is mostly recommended for bass players. Pedal ships in 'NORMAL' mode.

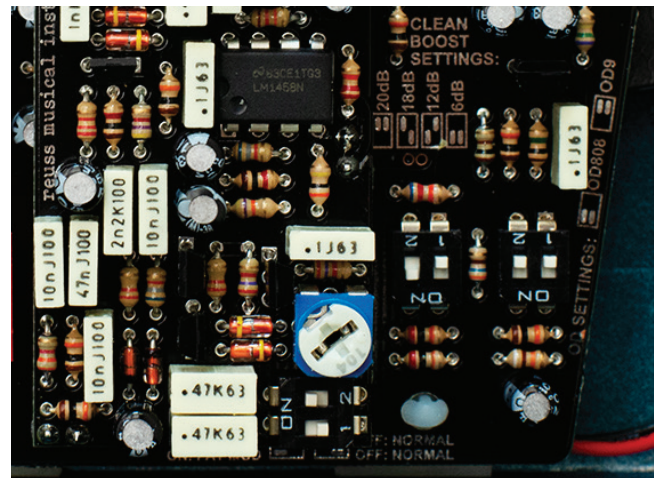
(continues next page)

(... continued from previous page)

- **CLEAN BOOST SETTINGS:** These switches controls the boost level of the clean signal which is fed to the 'CLEAN MIX' control. It can be set in four steps (+6, +12, +18 and +20 dB). Please see illustration at circuit board. The pedal is shipped in +18dB setting.
- **OD SETTINGS:** This switch sets the DRIVE 1 (TS) to TS808 or TS09 modes. Pedal ships in 808 mode. The switch only has an effect on the output section of the TS circuit. It's quite subtle.

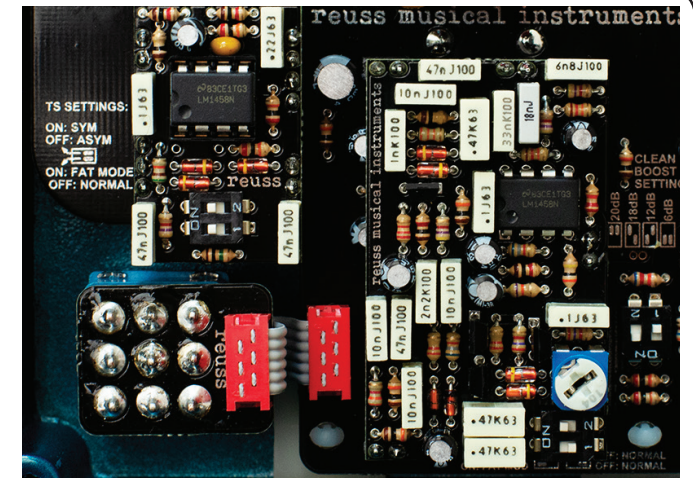
Connectors

- **'INPUT'** is the input. Connect your instrument here.
- **'OUTPUT'** is the output.
- **'9V DC'** is a standard 'Boss type' guitar pedal power supply input (negative centre). It is safe to run the pedal at up to 18V



Specifications

- Unique parallel overdrive pedal which allows you to mix two complementary sounding overdrive circuits and a clean channel to create complex new overdrive effects.
- The pedal can be customized to personal taste via a large selection of internal switches and controls
- Contains seven rare vintage new old stock 1S2473 clipping diodes which has a softer 'knee' and a less harsh sound current production silicon diodes
- Extremely high build quality. Completely hand-made in the European Union using old fashioned 'plated through hole' construction. No robot soldering
- Rugged aluminum enclosure in a metallic teal finish. Silk screen printed graphics
- High quality Neutrik jacks, wired by hand
- Upgrade quality footswitch, good for 50000 stomps (a standard switch takes 6000)
- Runs at 9-18 volt using an external power supply (not included) or a 9V battery (not included)
- Power consumption 25 mA



Battery access

Remove the four screws at the bottom side of the pedal with a Philips head screw driver to remove the bottom plate and gain access to the battery

Warranty

All Reuss pedals comes with a limited 24 months warranty against manufacturing faults
The warranty is not covering normal wear and tear or abuse

Circuit and design copyright 2020
Reuss Musical Instruments / Good Guy's Media & Music
DK-2860 Søborg, Denmark
www.reusseffects.com