



# ANZIE

PERMANENT BRACELET & NECKLACE  
CUSTOMIZATION MENU - USD

# PERMANENT BRACELETS

## OUR CHAINS

Find your forever bracelet - choose your chain and charm, and add an endless bracelet to your stack on the spot.

### YELLOW GOLD CHAINS:

Style: 5033G



**6" YELLOW GOLD DIAMOND CUT CHAIN** **\$85**  
 \$5 PER ADD 0.25" / \$10 PER ADD 0.5"

Style: 5034G



**6" YELLOW GOLD CABLE CHAIN** **\$85**  
 \$7 PER ADD 0.25" / \$14 PER ADD 0.5"

Style: 5036G



**6" YELLOW GOLD LARGE CABLE CHAIN** **\$215**  
 \$15 PER ADD 0.25" / \$30 PER ADD 0.5"

Style: 5041G



**6" PETITE PAPER CLIP CHAIN** **\$150**  
 \$7 PER ADD 0.25" / \$14 PER ADD 0.5"

*\*prices shown are in usd retail*

Style: 5042G



**6" ORIGINAL PAPER CLIP CHAIN** **\$315**  
 \$20 PER ADD 0.25" / \$40 PER ADD 0.5"

Style: 5043G



**6" LARGE PAPER CLIP CHAIN** **\$495**  
 \$30 PER ADD 0.25" / \$60 PER ADD 0.5"

Style: 5179G



**6" YELLOW GOLD THICK CABLE CHAIN** **\$250**  
 \$15 PER ADD 0.25" / \$30 PER ADD 0.5"

Style: 5177G



**6" YELLOW GOLD FIGARO CHAIN** **\$195**  
 \$15 PER ADD 0.25" / \$30 PER ADD 0.5"

Style: 5178G



**YELLOW GOLD CURB CHAIN** **\$550**  
 \$30 PER ADD 0.25" / \$60 PER ADD 0.5"

### ROSE GOLD CHAINS:

Style: 5034RG



**6" ROSE GOLD CABLE CHAIN** **\$85**  
\$7 PER ADD 0.25" / \$14 PER ADD 0.5"

Style: 5033RG



**6" ROSE GOLD DIAMOND CUT CHAIN** **\$75**  
\$5 PER ADD 0.25" / \$10 PER ADD 0.5"

Style: 5041RG



**6" PETITE ROSE GOLD PAPER CLIP CHAIN** **\$150**  
\$7 PER ADD 0.25" / \$14 PER ADD 0.5"

### WHITE GOLD CHAINS:

Style: 5033WG



**6" WHITE GOLD DIAMOND CUT CHAIN** **\$75**  
\$5 PER ADD 0.25" / \$10 PER ADD 0.5"

Style: 5041WG



**6" PETITE WHITE GOLD PAPER CLIP CHAIN** **\$150**  
\$7 PER ADD 0.25" / \$14 PER ADD 0.5"

Style: 5034WG



**6" WHITE GOLD CABLE CHAIN** **\$85**  
\$7 PER ADD 0.25" / \$14 PER ADD 0.5"

Style: 517W9G



**6" WHITE GOLD THICK CABLE CHAIN** **\$250**  
\$15 PER ADD 0.25" / \$30 PER ADD 0.5"

Style: 5177G



**6" WHITE GOLD FIGARO CHAIN** **\$195**  
\$15 PER ADD 0.25" / \$30 PER ADD 0.5"

# PERMANENT BRACELETS

## OUR CHARMS

Choose your charm - We have a wide selection of charms, from birthstones, initials and symbols.



ROUND CLASP **\$35**  
Style: 5213G



GOLD CLASP **\$110**  
Style: 5029GG



ELONGATED CLASP **\$80**  
Style: 5030G



GOLD TAG **\$50**  
Style: 5108G

Style: 5102MG



JANUARY  
**GARNET \$80**

Style: 5102A



FEBRUARY  
**AMETHYST \$80**

Style: 5102AQ



MARCH  
**AQUAMARINE \$80**

Style: 5102W



APRIL  
**CLEAR TOPAZ \$80**

Style: 5102DD



APRIL  
**DIAMOND \$115**

Style: 5102EE



MAY  
**EMERALD \$115**

Style: 5102MN



JUNE  
**MOONSTONE \$80**

Style: 5102R



JULY  
**RUBY \$80**

Style: 5102P



AUGUST  
**PERIDOT \$80**

Style: 5102BQ



SEPTEMBER  
**BLUE SAPPHIRE \$115**

Style: 5102AO



OCTOBER  
**OPAL \$115**

Style: 5102C



NOVEMBER  
**CITRINE \$80**

Style: 5102T



DECEMBER  
**TURQUOISE \$80**



PAVÉ INITIAL **\$380**  
Style: 5169C



DIAMOND INITIAL **\$150**  
Style: 5168CD



PAVÉ EVIL EYE **\$280**  
Style: 5172T



TENNIS RACKET **\$150**  
Style: 5183D



MINI PAW **\$150**  
Style: 5173G



PAW **\$170**  
Style: 5173GG



EVIL EYE **\$95**  
Style: J302D



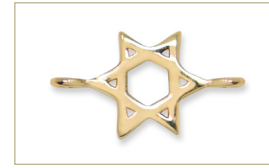
LASH EVIL EYE **\$115**  
Style: 5150D



PAVÉ EVIL EYE **\$280**  
Style: 5172D



STAR OF DAVID **\$80**  
Style: 5175G



LARGE STAR OF DAVID **\$150**  
Style: 5175GG



PAVÉ STAR OF DAVID **\$280**  
Style: 5202D



LARGE HEART **\$170**  
Style: 5185G



PAVÉ HEART **\$280**  
Style: J308HD



LARGE PAVÉ HEART **\$450**  
Style: 5185D



CROSS **\$150**  
Style: 5174G



PAVÉ CROSS **\$380**  
Style: 5174D



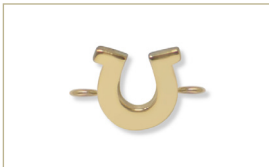
HAMSA **\$100**  
Style: J292D



BAGUETTE **\$100**  
Style: 5167W



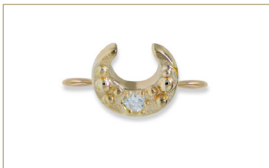
GOLD BALL **\$100**  
Style: 5170G



HORSESHOE **\$150**  
Style: 5190G



PAVÉ BOLT **\$380**  
Style: 5203D



MOON **\$135**  
Style: 5192D



CLOVER **\$180**  
Style: J307D



BUTTERFLY **\$150**  
Style: J306D

## OUR STORY

### ABOUT THE BRAND

From its inception, Anzie Jewelry has been a celebration of life and color. Named after its founder, Anzie Stein, the collection is best known for its signature pieces using precious gemstones.



#### *Our inspiration:*

Inspired by Montreal's eclectic style, our designs are as versatile as the women who inspire us.

Every collection shares the same qualities: polished, inventive, and timeless. Our signature pieces include glistening celestial shapes, Mediterranean inspired jewels, and art deco medallions.

#### *Our Philosophy:*

Anzie takes great pride in only using material from ethically responsible sources. All of our gold, silver and gemstones are conflict-free and sourced from around the world. So you can look and feel good about what you're wearing.

# ANZIE

@ANZIEJEWELRY | SUPPORT@ANZIE.COM | 1.888.341.2604

**ANZIE.COM**

*All prices listed are in US dollars*