



ANZIE

PERMANENT BRACELET & BOHÈME
CUSTOMIZATION MENU - CAD

PERMANENT BRACELETS

OUR CHAINS

Find your forever bracelet - choose your chain and charm, and add an endless bracelet to your stack on the spot.

YELLOW GOLD CHAINS:

Style: 5033G



6" YELLOW GOLD DIAMOND CUT CHAIN **99\$**
 \$5 PER ADD 0.25" / \$10 PER ADD 0.5"

Style: 5034G



6" YELLOW GOLD CABLE CHAIN **110\$**
 \$7 per add 0.25" / \$14 per add 0.5"

Style: 5036G



6" YELLOW GOLD LARGE CABLE CHAIN **280\$**
 \$15 PER ADD 0.25" / \$30 PER ADD 0.5"

Style: 5041G



6" PETITE PAPER CLIP CHAIN **195\$**
 \$7 PER ADD 0.25" / \$14 PER ADD 0.5"

*prices shown are in cad retail

Style: 5042G



6" ORIGINAL PAPER CLIP CHAIN **410\$**
 \$20 PER ADD 0.25" / \$40 PER ADD 0.5"

Style: 5043G



6" LARGE PAPER CLIP CHAIN **645\$**
 \$30 PER ADD 0.25" / \$60 PER ADD 0.5"

Style: 5179G



6" YELLOW GOLD THICK CABLE CHAIN **\$325**
 \$15 PER ADD 0.25" / \$30 PER ADD 0.5"

Style: 5177G



6" YELLOW GOLD FIGARO CHAIN **\$255**
 \$15 PER ADD 0.25" / \$30 PER ADD 0.5"

Style: 5178G



YELLOW GOLD CURB CHAIN **\$715**
 \$30 PER ADD 0.25" / \$60 PER ADD 0.5"

ROSE GOLD CHAINS:

Style: 5034RG



6" ROSE GOLD CABLE CHAIN **110\$**
\$7 PER ADD 0.25" / \$14 PER ADD 0.5"

Style: 5033RG



6" ROSE GOLD DIAMOND CUT CHAIN **99\$**
\$5 PER ADD 0.25" / \$10 PER ADD 0.5"

Style: 5041RG



6" PETITE ROSE GOLD PAPER CLIP CHAIN **\$195**
\$7 PER ADD 0.25" / \$14 PER ADD 0.5"

WHITE GOLD CHAINS:

Style: 5033WG



6" WHITE GOLD DIAMOND CUT CHAIN **99\$**
\$5 PER ADD 0.25" / \$10 PER ADD 0.5"

Style: 5041WG



6" PETITE WHITE GOLD PAPER CLIP CHAIN **\$195**
\$7 PER ADD 0.25" / \$14 PER ADD 0.5"

Style: 5034WG



6" WHITE GOLD CABLE CHAIN **110\$**
\$7 PER ADD 0.25" / \$14 PER ADD 0.5"

Style: 517W9G



6" WHITE GOLD THICK CABLE CHAIN **\$325**
\$15 PER ADD 0.25" / \$30 PER ADD 0.5"

Style: 5177G



6" WHITE GOLD FIGARO CHAIN **\$255**
\$15 PER ADD 0.25" / \$30 PER ADD 0.5"

PERMANENT BRACELETS

OUR CHARMS

*prices shown are in cad retail

Choose your charm - We have a wide selection of charms, from birthstones, initials and symbols.



Birthstones are available in 14k yellow & white gold.

<p>Style: 5102EE</p>  <p>MAY EMERALD</p>	<p>Style: 5102MN</p>  <p>JUNE MOONSTONE</p>	<p>Style: 5102R</p>  <p>JULY RUBY</p>	
<p>Style: 5102MG</p>  <p>JANUARY GARNET</p>	<p>Style: 5102A</p>  <p>FEBRUARY AMETHYST</p>	<p>Style: 5102P</p>  <p>AUGUST PERIDOT</p>	
<p>Style: 5102W</p>  <p>APRIL CLEAR TOPAZ</p>	<p>Style: 5102DD</p>  <p>APRIL DIAMOND</p>	<p>Style: 5102BQ</p>  <p>SEPTEMBER BLUE SAPPHIRE</p>	<p>Style: 5102AO</p>  <p>OCTOBER OPAL</p>
<p>Style: 5102AQ</p>  <p>MARCH AQUAMARINE</p>	<p>Style: 5102T</p>  <p>DECEMBER TURQUOISE</p>	<p>Style: 5102C</p>  <p>NOVEMBER CITRINE</p>	<p>Style: 5102T</p>  <p>DECEMBER TURQUOISE</p>

Style: 5102MG

Style: 5102A

JANUARY GARNET \$100

FEBRUARY AMETHYST \$100

Style: 5102AQ

Style: 5102W

Style: 5102DD

MARCH AQUAMARINE \$100

APRIL CLEAR TOPAZ \$100

APRIL DIAMOND \$150

Style: 5102P

Style: 5102BQ

Style: 5102AO

AUGUST PERIDOT \$100

SEPTEMBER BLUE SAPPHIRE \$150

OCTOBER OPAL \$150

Style: 5102C

Style: 5102T

NOVEMBER CITRINE \$100

DECEMBER TURQUOISE \$100



PAVÉ INITIAL **\$490**
Style: 5169C



DIAMOND INITIAL **\$195**
Style: 5168CD



DIAMOND INITIAL **\$195**
Style: 5168WGCD



EVIL EYE **\$125**
Style: J302D



LASH EVIL EYE **\$150**
Style: 5150D



PAVÉ EVIL EYE **\$360**
Style: 5172D



PAVÉ EVIL EYE **\$360**
Style: 5172T



PAVÉ HEART **\$360**
Style: J308HD



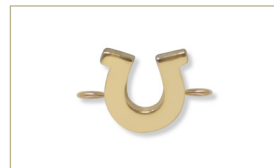
LARGE PAVÉ HEART **\$585**
Style: 5185D



LARGE HEART **\$220**
Style: 5185G



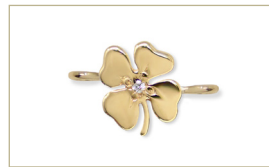
GOLD BALL **\$130**
Style: 5170G



HORSESHOE **\$195**
Style: 5190G



BAGUETTE **\$130**
Style: 5167W



CLOVER **\$230**
Style: J307D



BUTTERFLY **\$195**
Style: J306D

**prices shown are in cad retail*



TENNIS RACKET **\$195**
Style: 5183D



MINI PAW **\$195**
Style: 5173G



PAW **\$220**
Style: 5173GG



STAR OF DAVID **\$100**
Style: 5175G



LARGE STAR OF DAVID **\$195**
Style: 5175GG



PAVÉ STAR OF DAVID **\$360**
Style: 5202D



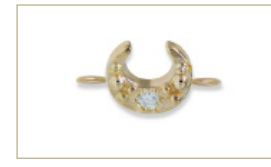
CROSS **\$195**
Style: 5174G



PAVÉ CROSS **\$490**
Style: 5174D



HAMSA **\$130**
Style: J292D



MOON **\$175**
Style: 5192D



PAVÉ BOLT **\$490**
Style: 5203D

BOHÈME CUSTOMIZATION

OUR BEADS

Choose your bead, charm and closure to create a customized bracelet on the spot.

MALAYA GARNET - JANUARY **125\$**
 Meaning: Protection



AMETHYST - FEBRUARY **125\$**
 Meaning: Wisdom



AQUAMARINE - MARCH **125\$**
 Meaning: Serenity



LABRADORITE - APRIL **125\$**
 Meaning: Strength



EMERALD - MAY **175\$**
 Meaning: Hope



PEARL - JUNE **125\$**
 Meaning: Love



**prices shown are in cad retail*

RUBY - JULY **175\$**
 Meaning: Vitality



PERIDOT - AUGUST **125\$**
 Meaning: Beauty



LAPIS - SEPTEMBER **125\$**
 Meaning: Truth



ROZE QUARTZ - OCTOBER **125\$**
 Meaning: Healing



CITRINE - NOVEMBER **125\$**
 Meaning: Joy



TURQUOISE - DECEMBER **125\$**
 Meaning: Friendship



TURQUOISE - DECEMBER **715\$**
 Meaning: Friendship



*prices shown are in cad retail

BOHÈME CUSTOMIZATION CHARMS AND STATIONS



ROUND CLASP
Style: 5213G

\$45



GOLD CLASP
Style: 5029GG

\$140



SILVER CLASP
Style: 5029SS

\$20



GOLD BEAD
Style: 492G

\$150



SILVER BEAD
Style: 492S

\$35



LARGE BEAD
Style: 492GG

\$250



GOLD TAG
Style: 5108G

\$65



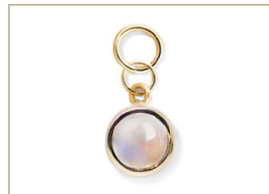
SILVER TAG
Style: 5108S

\$20



INITIAL
Style: 5121AD

\$195



MOONSTONE
Style: 303MN

\$255



GOthic STAR
Style: 294W

\$360



PAVÉ WISHBONE
Style: 161WB

\$575



EVIL EYE
Style: 168EV

\$360



MILLY
Style: 163MIL

\$425



HAMSA
Style: 160HM

\$255



CLOVER
Style: 156G

\$255



HOLLOW HEART
Style: 174HH

\$255



STAR OF DAVID
Style: 171ST

\$275



GOLD PAW
Style: 304G

\$255



SILVER PAW
Style: 304S

\$65

OUR STORY

ABOUT THE BRAND

From its inception, Anzie Jewelry has been a celebration of life and color. Named after its founder, Anzie Stein, the collection is best known for its signature pieces using precious gemstones.



Our inspiration:

Inspired by Montreal's eclectic style, our designs are as versatile as the women who inspire us.

Every collection shares the same qualities: polished, inventive, and timeless. Our signature pieces include glistening celestial shapes, Mediterranean inspired jewels, and art deco medallions.

Our Philosophy:

Anzie takes great pride in only using material from ethically responsible sources. All of our gold, silver and gemstones are conflict-free and sourced from around the world. So you can look and feel good about what you're wearing.

ANZIE

@ANZIEJEWELRY | SUPPORT@ANZIE.COM | 1.888.341.2604

ANZIE.COM

All prices listed are in Canadian dollars