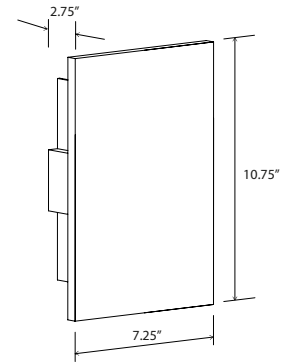
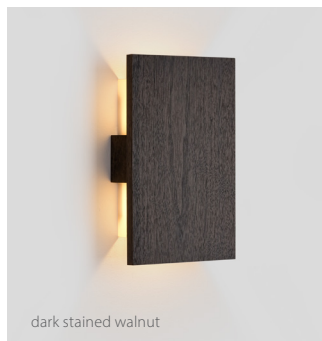


Tersus

sconce



Dimensions: 10.75" x 7.25" x 2.75"
 Materials: solid wood, polymer, metal option, stone option
 Product weight: 2 lb (5 lb marble)
 Light source: integrated LED
 Light output: 1130 Lumens (source)
 Light color*: 2700 K or 3500 K
 Color accuracy: 90+ CRI
 Power usage: 13 W
 Dimmable (see driver below)
 Wood grain and stone will vary
 Specifications subject to change



MATERIAL & FINISH OPTIONS

Wood Body
 walnut (CM-001)
 dark stained walnut (CM-002)
 maple (CM-005)
 white washed oak (CM-095)

Optional Face Material
 brushed aluminum (CM-012)
 brushed rose gold (CM-046)
 brushed brass (CM-047)
 carrara marble (CM-078)
 none (leave blank)

Lamping*
 2700 K LED
 3500 K LED

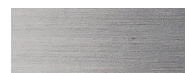
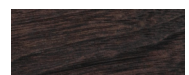
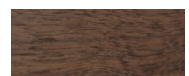
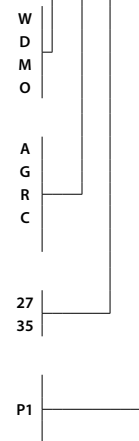
Driver
 AC Input Voltage Range: 120-277 V
 120 V input: TRIAC, ELV & 0-10 V dimmable
 240 & 277 V input: only 0-10 V dimmable

Includes: frosted polymer (CM-024)

J-box centered behind fixture

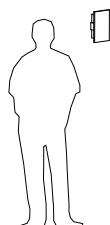
*Available in 3000K, 4000K and other color temperatures upon request

Tersus part # 03-136-



The Tersus is an example of the simplest form unlocking a myriad of design possibilities. The long reaching light pattern cast on the wall coupled with the numerous finishes and materials offered makes the Tersus well versed for all kinds of compositions and applications.

Nick Sheridan,
 Designer



⚠ WARNING. California Proposition 65 Warning for California Consumers. This product can expose you to chemicals including wood dust and lead which are known to the State of California to cause cancer or birth defects or other reproductive harm. For more information go to www.P65Warnings.ca.gov