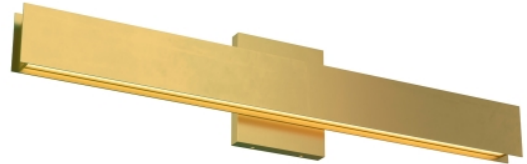


PRODUCT FEATURES

- Influenced by modern Asian design, a beautiful glow of integrated LED emits between two thin metal plates.
- Available in three modern finishes, Nightshade Black, Polished Nickel and Natural Brass that will patina over time.
- Complete the look with larger Bath Bar size and Line-Voltage Pendants.
- Dimmable with most LED compatible ELV, Triac and 0-10V dimmers
- Mounts horizontal or vertical. ADA Compliant.
- Protected by a 5-year warranty. Please visit the "About Us" Page on techlighting.com for more for warranty details



LAMPING

Includes 120 volt 12.2 watt, 295 delivered lumens, 3000K LED module. 120V dimmable with most LED compatible ELV and TRIAC dimmers. 277V compatible with 0-10V dimmers. Mounts horizontally or vertically. ADA compliant.

Natural Brass



Natural Brass

Nightshade Black

Polished Nickel

ORDERING INFORMATION

700BCBAU	LENGTH (A)	FINISH	LAMP
	24 24"	NB NATURAL BRASS	-LED930
		B NIGHTSHADE BLACK	-LED930 LED 90 CRI 3000K 120V
		N POLISHED NICKEL	-LED930-277 INTEGRATED LED 90 CRI 3000K 277V
			-LED930-277 LED 90 CRI 3000K 277V

700BCBAU _____

JOB NAME _____

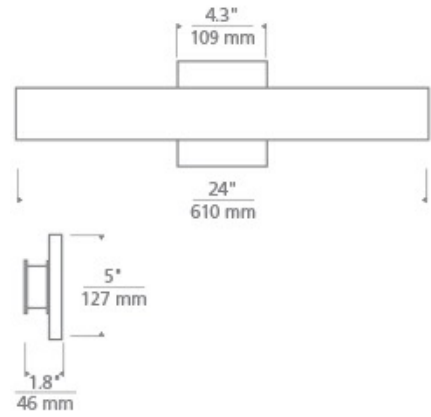
NOTES _____



BAU 24 BATH

SPECIFICATIONS

HARDWARE MATERIAL	Metal
SHADE MATERIAL	Acrylic
NET WEIGHT	1.5 lbs
HEIGHT	5in
WIDTH	1.8in
LENGTH	24in
WET LISTED	
DAMP LISTED	Yes
DRY LISTED	
GENERAL LISTING	
INCLUDES	



LAMPING SPECIFICATIONS

	LED LAMP	INTEGRATED LED	NON LED	NO LAMP
DELIVERED LUMENS		295		
WATTS		12.2		
MAX WATTAGE PER BULB		12.2W		
INPUT VOLTAGE		120V 277V		
DIMMING TYPE*		ELV, TRIAC 0-10V		
CCT		3000K		
CRI		90 CRI		
LED LIFETIME				
L70				
AVERAGE BULB HOURS		50000		
FIELD SERVICEABLE LED				
LAMP BASE		Integrated LED		
LAMP SHAPE		Integrated LED		
LAMP INCLUDED?		Y		
WARRANTY**		5 Years		

* Dimming information available at www.techlighting.com/Downloads#dimming

** Visit techlighting.com for specific warranty limitations and details.

T20 / T24 INFORMATION

	Integrated LED	Replacement LED Lamp	No Lamp *
This product can be used to comply with California Building Energy Efficiency Standards 2016 Title 24 Part 6.	Yes		
This product can be used to comply with California Appliance Efficiency Standards 2016 Title 20 and may be shipped to and sold in California.	No		

* If a light fixture or component does not include a lamp or light source, it is the responsibility of the customer to select a lamp that meets the T24 and T20 requirements.

