

ARMONIA

design Francesco Lucchese 2019

Vistosi

Modello AP 20_CE

A collection with contemporary connotations that incorporates precious historical features: those of glass working such as the "balloton" and the straight and twisted "rigadin". The collection is completed by a large new suspension in which the oval frame supports four colored and textured cylinders in pure crystal and four new wall versions.

GLASS FINISH

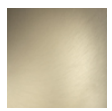


ADRI
dark amber striped
glass

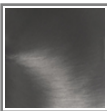


CRRI
crystal striped
glass

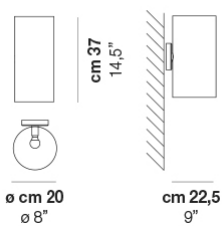
FRAME FINISH



BKS
matt gold 3



NNS
matt black nickel



ARMON AP 20 ADRI NNS E14 CE

LIGHT SOURCES

1x60W 220-240 V 50/60 Hz E14

TECH DATA

⊥ IP20 ⚠

VOLUME: Mc 0,07

PACKAGE: N.1

NET WEIGHT: Kg 3,00

GROSS WEIGHT: Kg 4,50

CERTIFICATIONS

EU Cert



International Cert