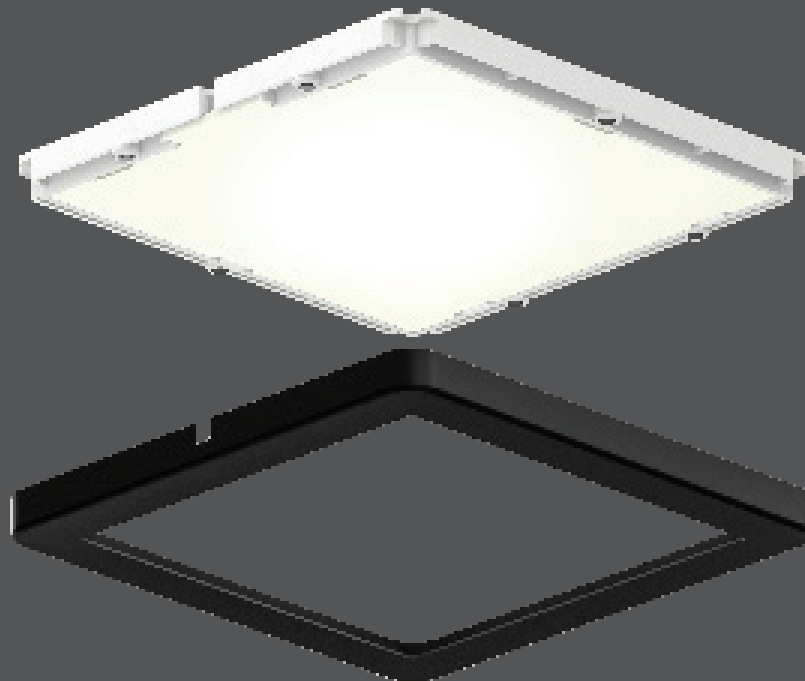


## Ultra-slim puck

Thanks to its 1/4" profile, our 12V ultra-slim LED puck can be integrated onto any surface. Available as a single unit or as a kit of 3, in round or square and 3000K or 4000K. The choice is yours!



Model	Size	Watts	Delivered lumens	LED lumens	CRI	Color °T	Voltage
<b>4006</b>	Ø3.875"	3.6 W	250 lm	300 lm	90	3000 K	12 V
<b>4006-4K</b>	Ø3.875"	3.6 W	250 lm	300 lm	90	4000 K	12 V
<b>4006SQ</b>	3.875"	3.6 W	250 lm	300 lm	90	3000 K	12 V
<b>4006SQ-4K</b>	3.875"	3.6 W	250 lm	300 lm	90	4000 K	12 V
<b>K4006</b>	3 x Ø3.875"	3.6 W*	250 lm*	300 lm*	90	3000 K	12 V
<b>K4006SQ</b>	3 x 3.875"	3.6 W*	250 lm*	300 lm*	90	3000 K	12 V

\*Per fixture

### Specifications

12V DC LED driver required (4006/4006SQ)  
 Over 50,000 hours of service life  
 12" input lead with quick connector  
 24" interconnection harness included  
 Warm white light output  
 Superior LED performance and lifespan  
 Smooth 360° wide spread  
 Minimal heat emission  
 Heat sink and thermal protection  
 JA8 Certified  
 Refer to website for dimmer compatibility  
 5-year warranty

### Note

Plug-in or hard-wired power supply required for installation when purchasing the single unit (4006). Sold separately.

Other Color °T and Finishes available, but may require MOQ's and longer lead times. Please contact your DALI representative for more information.

### Power supplies: plug-in

**ETR-LED10WPI**  
 12VDC/10W class 2 LED driver  
**ETR-LED24WPI**  
 12VDC/24W class 2 LED driver

### Power supplies: hard-wired

**BT06DIM-IC**  
 6W dimmable LED hardwire driver  
**BT12DIM-IC**  
 12W dimmable LED hardwire driver  
**BT24DIM-IC**  
 24W dimmable LED hardwire driver  
**BT36DIM**  
 36W dimmable LED hardwire driver  
**BT48DIM**  
 48W dimmable LED hardwire driver

### Finish

● **BK** Black  
 ● **SN** Satin Nickel  
 ○ **WH** White

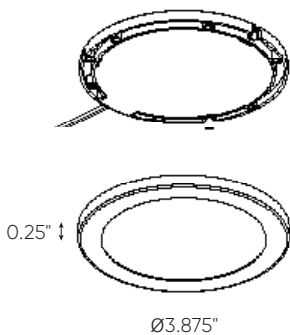
### Accessories

**4000E-24**  
 24" extension cord  
**4000E-60**  
 60" extension cord  
**4000HRNS-24**  
 24" interconnection harness

### Order example

**4006-SN**  
 4006 round single puck with 250 lumens at 3000K in a satin nickel finish

### 4006



### 4006SQ

