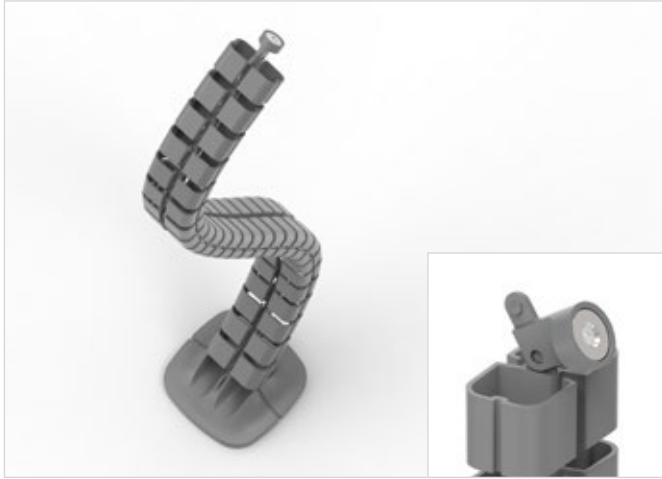


Linx

Magnetic cable management spine
for fixed height desks

VCS4/SDL



Features

Unique linking system, twist action to separate vertebrae, will not pull apart under tension

Limpet magnetic fixing clips, easily mount to metal cable tray or anywhere on metal desk frame

Alternative multipurpose fixing clips, mount to cable tray, wire basket or desktop (requires hex/allen key)

Dual cable compartments (30 x 25 mm) keep data and power cables separate to meet BS6396 requirements

Large, weighted stable base with dual cable exits

Available in black, light grey or white

Plastic free packaging

Dimensions	W65 x D35 x H800 mm
Vertebrae	20
Capacities	Dual cable compartments, 30 x 25 mm
Weight	1kg
Materials	Plastic, weighted metal base, metal magnet ring
Warranty	5 years
Certification	Meets BS 6396 requirements
Box (20V) Dimensions	W415 x D75 x H75 mm
Box (20V) Weight	0.41kg
Box (Base) Dimensions	W130 x D130 x H60 mm
Box (Base) Weight	0.67kg
Outer Box (20V) Dimensions - 40 units	W610 x D440 x H445 mm
Outer Box (20V) Weight	17.1kg
Outer Box (Base) Dimensions - 20 units	W310 x D275 x H290 mm
Outer Box (Base) Weight	13.5kg

Linx

Magnetic cable management spine for height adjustable single desks
VCS4/HAL



Features

Unique linking system, twist action to separate vertebrae, will not pull apart under tension

Limpet magnetic fixing clips, easily mount to metal cable tray or anywhere on metal desk frame

Alternative multipurpose fixing clips, mount to cable tray, wire basket or desktop (requires hex/allen key)

Dual cable compartments (30 x 25 mm) keep data and power cables separate to meet BS6396 requirements

Large, weighted stable base with dual cable exits

Available in black, light grey or white

Plastic free packaging

Dimensions	W65 x D35 x H1300 mm
Vertebrae	33
Capacities	Dual cable compartments, 30 x 25 mm
Weight	1.23kg
Materials	Plastic, weighted metal base, metal magnet ring
Warranty	5 years
Certification	Meets BS 6396 requirements
Box (20V) Dimensions	W415 x D75 x H75 mm
Box (20V) Weight	0.41kg
Box (13V) Dimensions	W535 x D80 x H45 mm
Box (13V) Weight	0.3kg
Box (Base) Dimensions	W130 x D130 x H60 mm
Box (Base) Weight	0.67kg
Outer Box (20V) Dimensions - 40 units	W610 x D440 x H445 mm
Outer Box (20V) Weight	17.1kg
Outer Box (13V) Dimensions - 40 units	W520 x D330 x H560 mm
Outer Box (13V) Weight	12.4kg
Outer Box (Base) Dimensions - 20 units	W310 x D275 x H290 mm
Outer Box (Base) Weight	13.5kg

Linx

Magnetic cable management spine for height adjustable bench desks
VCS4/HBL



Features

Unique linking system, twist action to separate vertebrae, will not pull apart under tension

Limpet magnetic fixing clips, easily mount to metal cable tray or anywhere on metal desk frame

Alternative multipurpose fixing clips, mount to cable tray, wire basket or desktop (requires hex/allen key)

Dual cable compartments (30 x 25 mm) keep data and power cables separate to meet BS6396 requirements

Large, weighted stable base with dual cable exits

Available in black, light grey or white

Plastic free packaging

Dimensions	W65 x D35 x H1300 mm
Vertebrae	66
Capacities	Dual cable compartments, 30 x 25 mm
Weight	1.83kg
Materials	Plastic, weighted metal base, metal magnet ring
Warranty	5 years
Certification	Meets BS 6396 requirements
Box (20V) Dimensions (x2)	W415 x D75 x H75 mm
Box (20V) Weight (x2)	0.41kg
Box (13V) Dimensions (x2)	W535 x D80 x H45 mm
Box (13V) Weight (x2)	0.3kg
Box (Base) Dimensions	W130 x D130 x H60 mm
Box (Base) Weight	0.67kg
Outer Box (20V) Dimensions - 40 units	W610 x D440 x H445 mm
Outer Box (20V) Weight	17.1kg
Outer Box (13V) Dimensions - 40 units	W520 x D330 x H560 mm
Outer Box (13V) Weight	12.4kg
Outer Box (Base) Dimensions - 20 units	W310 x D275 x H290 mm
Outer Box (Base) Weight	13.5kg

Linx

Magnetic cable management spine
for use between cable trays

VCS4/TTL



Features

Unique linking system, twist action to separate vertebrae, will not pull apart under tension

Limpet magnetic fixing clips, easily mount to metal cable tray or anywhere on metal desk frame

Alternative multipurpose fixing clips, mount to cable tray, wire basket or desktop (requires hex/allen key)

Dual cable compartments (30 x 25 mm) keep data and power cables separate to meet BS6396 requirements

Available in black, light grey or white

Plastic free packaging

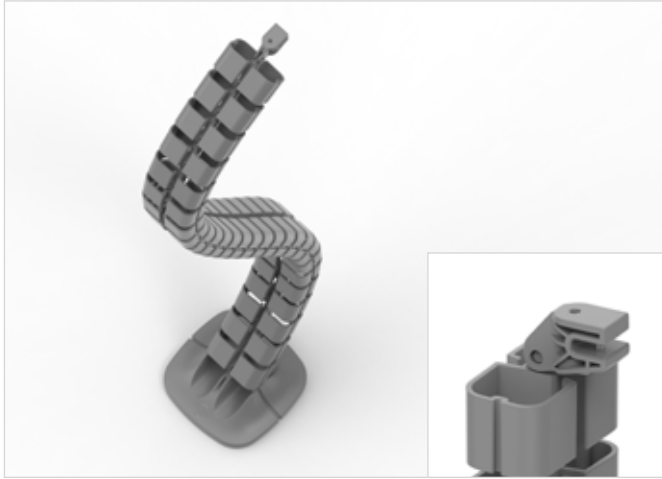
Dimensions	W800 x D35 x H65 mm
Capacities	Dual cable compartments, 30 x 25 mm
Vertebrae	33
Weight	0.6kg
Materials	Plastic, metal magnet ring
Warranty	5 years
Certification	Meets BS 6396 requirements
Box (20V) Dimensions	W415 x D75 x H75 mm
Box (20V) Weight	0.41kg
Box (13V) Dimensions	W535 x D80 x H45 mm
Box (13V) Weight	0.3kg
Outer Box (20V) Dimensions - 40 units	W610 x D440 x H445 mm
Outer Box (20V) Weight	17.1kg
Outer Box (13V) Dimensions - 40 units	W520 x D330 x H560 mm
Outer Box (13V) Weight	12.4kg



Linx

Cable management spine
for fixed height desks

VCS4/SD



Features

Unique linking system, twist action to separate vertebrae, will not pull apart under tension

Multipurpose fixing clips, mount to cable tray, wire basket or desktop (requires hex/allen key)

Dual cable compartments (30 x 25 mm) keep data and power cables separate to meet BS6396 requirements

Large, weighted stable base with dual cable exits

Available in black, light grey or white

Plastic free packaging

Dimensions	W65 x D35 x H800 mm
Vertebrae	20
Capacities	Dual cable compartments, 30 x 25 mm
Weight	1kg
Materials	Plastic, weighted metal base
Warranty	5 years
Certification	Meets BS 6396 requirements
Box (20V) Dimensions	W415 x D75 x H75 mm
Box (20V) Weight	0.41kg
Box (Base) Dimensions	W130 x D130 x H60 mm
Box (Base) Weight	0.67kg
Outer Box (20V) Dimensions - 40 units	W610 x D440 x H445 mm
Outer Box (20V) Weight	17.1kg
Outer Box (Base) Dimensions - 20 units	W310 x D275 x H290 mm
Outer Box (Base) Weight	13.5kg

Linx

Cable management spine
for height adjustable single desks
VCS4/HA



Features

Unique linking system, twist action to separate vertebrae, will not pull apart under tension

Multipurpose fixing clips, mount to cable tray, wire basket or desktop (requires hex/allen key)

Dual cable compartments (30 x 25 mm) keep data and power cables separate to meet BS6396 requirements

Large, weighted stable base with dual cable exits

Available in black, light grey or white

Plastic free packaging

Dimensions	W65 x D35 x H1300 mm
Vertebrae	33
Capacities	Dual cable compartments, 30 x 25 mm
Weight	1.23kg
Materials	Plastic, weighted metal base
Warranty	5 years
Certification	Meets BS 6396 requirements
Box (20V) Dimensions	W415 x D75 x H75 mm
Box (20V) Weight	0.41kg
Box (13V) Dimensions	W535 x D80 x H45 mm
Box (13V) Weight	0.3kg
Box (Base) Dimensions	W130 x D130 x H60 mm
Box (Base) Weight	0.67kg
Outer Box (20V) Dimensions - 40 units	W610 x D440 x H445 mm
Outer Box (20V) Weight	17.1kg
Outer Box (13V) Dimensions - 40 units	W520 x D330 x H560 mm
Outer Box (13V) Weight	12.4kg
Outer Box (Base) Dimensions - 20 units	W310 x D275 x H290 mm
Outer Box (Base) Weight	13.5kg

Linx

Cable management spine
for height adjustable bench desks
VCS4/HB



Features

Unique linking system, twist action to separate vertebrae, will not pull apart under tension

Multipurpose fixing clips, mount to cable tray, wire basket or desktop (requires hex/allen key)

Dual cable compartments (30 x 25 mm) keep data and power cables separate to meet BS6396 requirements

Large, weighted stable base with dual cable exits

Available in black, light grey or white

Plastic free packaging

Dimensions	W65 x D35 x H1300 mm
Vertebrae	66
Capacities	Dual cable compartments, 30 x 25 mm
Weight	1.83kg
Materials	Plastic, weighted metal base
Warranty	5 years
Certification	Meets BS 6396 requirements
Box (20V) Dimensions (x2)	W415 x D75 x H75 mm
Box (20V) Weight (x2)	0.41kg
Box (13V) Dimensions (x2)	W535 x D80 x H45 mm
Box (13V) Weight (x2)	0.3kg
Box (Base) Dimensions	W130 x D130 x H60 mm
Box (Base) Weight	0.67kg
Outer Box (20V) Dimensions - 40 units	W610 x D440 x H445 mm
Outer Box (20V) Weight	17.1kg
Outer Box (13V) Dimensions - 40 units	W520 x D330 x H560 mm
Outer Box (13V) Weight	12.4kg
Outer Box (Base) Dimensions - 20 units	W310 x D275 x H290 mm
Outer Box (Base) Weight	13.5kg

Linx

Cable management spine
for use between cable trays
VCS4/TT



Features

Unique linking system, twist action to separate vertebrae, will not pull apart under tension

Multipurpose fixing clips, mount to cable tray, wire basket or desktop (requires hex/allen key)

Dual cable compartments (30 x 25 mm) keep data and power cables separate to meet BS6396 requirements

Available in black, light grey or white

Plastic free packaging

Dimensions	W800 x D35 x H65 mm
Capacities	Dual cable compartments, 30 x 25 mm
Vertebrae	33
Weight	0.6kg
Materials	Plastic
Warranty	5 years
Certification	Meets BS 6396 requirements
Box (20V) Dimensions	W415 x D75 x H75 mm
Box (20V) Weight	0.41kg
Box (13V) Dimensions	W535 x D80 x H45 mm
Box (13V) Weight	0.3kg
Outer Box (20V) Dimensions - 40 units	W610 x D440 x H445 mm
Outer Box (20V) Weight	17.1kg
Outer Box (13V) Dimensions - 40 units	W520 x D330 x H560 mm
Outer Box (13V) Weight	12.4kg