

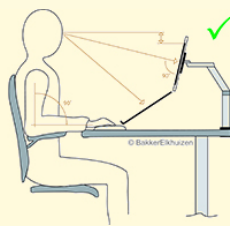
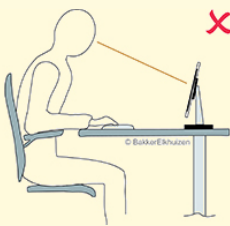
Filex Galaxy Modular Flex Single

Ergonomical and modular!



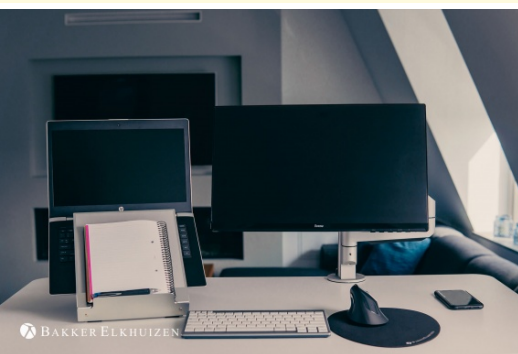
The Filex Galaxy Modular Flex Single is a modular monitor arm for 1 screen.

Flexible in depth and height and adjustable because of the gas spring and 3 pivot points. Rotating and tilting the screens is no longer a problem.



Placing the screen too low can lead to tension in the upper neck. Placing it too high (the top should not be above eye level) can also lead to problems.

Possibly even more important is the adjustability of the depth, ensuring an optimal viewing distance. This allows you to better take in information and puts the least amount of strain on the eyes. This optimal screen position works better, more comfortably and increases productivity with 10% when compared to an incorrect positioning (Sommerich et al, 1998).



Ergonomical and modular!

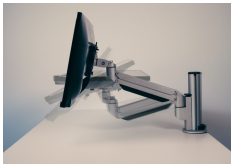
A correct positioning of your two screens allows you to work in a neutral position for both your neck and torso. The viewing distance will be optimised by the readability and light conditions which support you in performing your tasks in the work place. This monitor arm allows the positioning of the screens to be regulated simply and flexibly.



[Watch product online](#)

 [Watch video online](#)

De advantages of the Filex Galaxy Modular Flex Single



Viewing angle

Adjust the height and depth of the screen seamlessly with the patented connector on the post. The three pivoting points on the static arm and the VESA head allow the screen to tilt, rotate and turn.

Clamp

Because of the wide range of clamps, it is possible to mount the Filex Galaxy monitor arm onto most desktops. The desk clamp and cable space feeder are included.



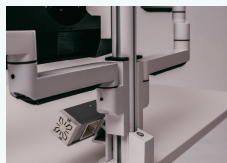
Rotation stop

The integrated rotation stop in the Filex Galaxy monitor arm ensures a desk can be placed against a wall or other desk (desk-to-desk) without the arms or wall touching.



Modular

The modular system provides you an easy work place expansion in the future. Simply expand to multiple screens, extend your post or include a electrification unit or CPU holder.



Circular

All parts are 100% recyclable and made from 100% sustainable materials. Because of the extensive range from 2 to 12 kg, you will not need a new gas spring when you use a different weight screen.



Design

Cable management is included in the Filex Galaxy series. This ensures a neat and tidy and professional look. All parts are available in White, Silver or Black and have a 5 year warranty.



Knowledge Center

An ergonomic workstation promotes the comfort and productivity of DSE workers. It is easy to create the ideal workstation with a few minor adjustments. Monitor arms provide more space for your workstation and improve your posture.

In addition, the height and distance of monitor arms can be adjusted easily. Moreover, more and more people are working...

 [Read more online](#)

Specifications

Weight	4.1 kg
Product code:	BNEFG809417-S

Contact

 BAKKER ELKHUIZEN

BakkerElkhuisen
Taalstraat 151
5261 BC Vught
Netherlands
tel. +31 365467265
email. info@bakkerelkhuisen.com
website: www.bakkerelkhuisen.co.uk