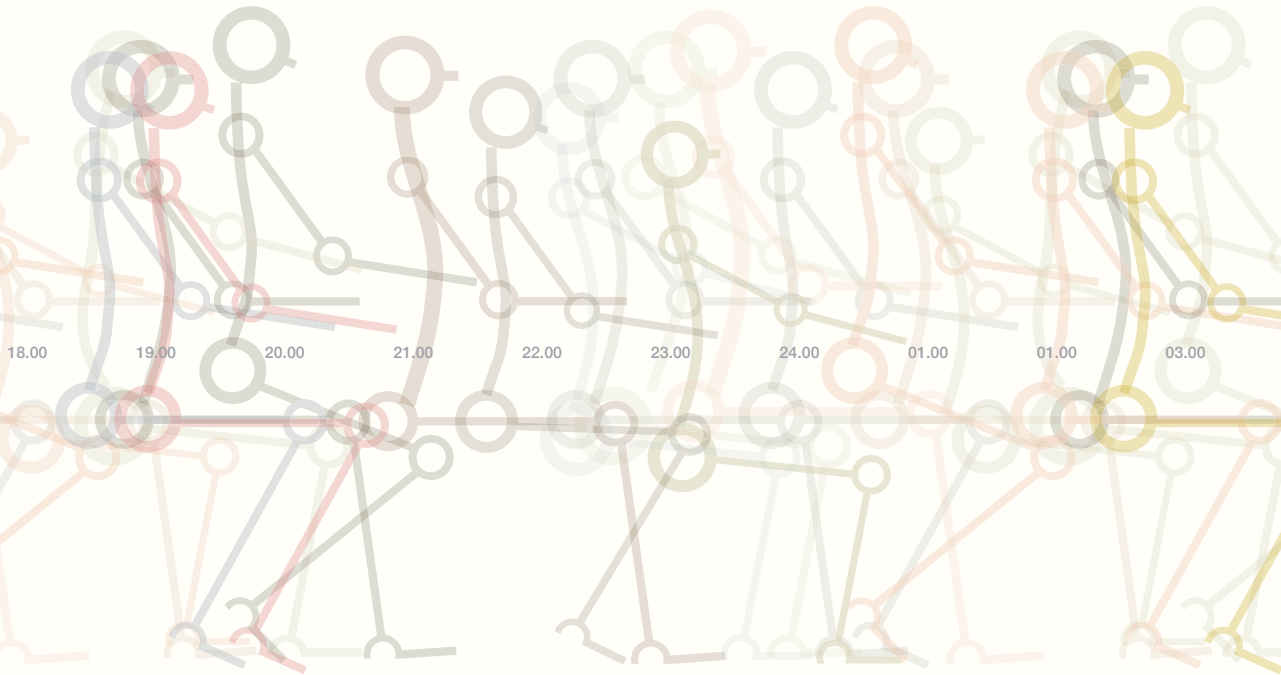


A range of task chairs focused on ergonomic excellence, but without a host of overly conspicuous controls. Their elegant simplicity and discreet functionality allows them to effortlessly blend into the contemporary workplace.

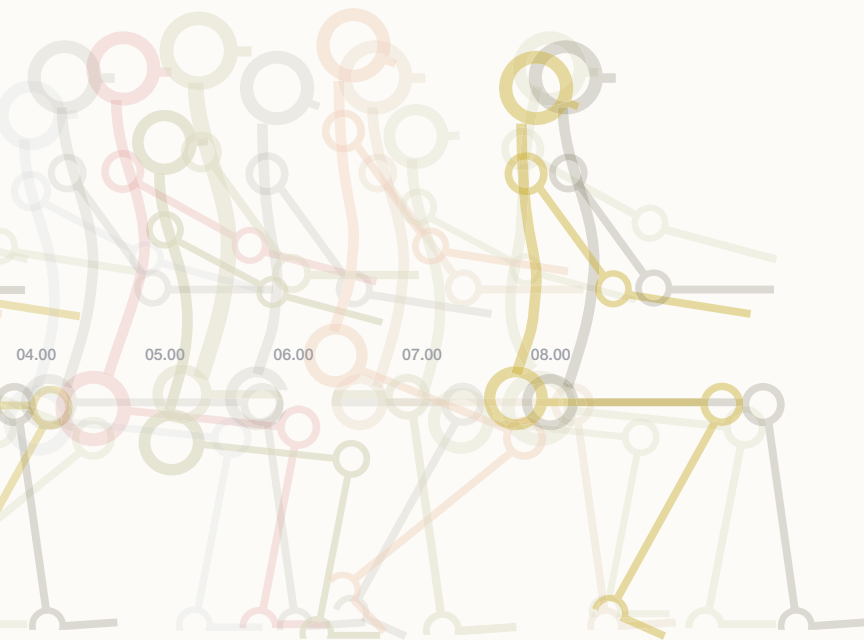
# being™

Design with *every body* in mind.

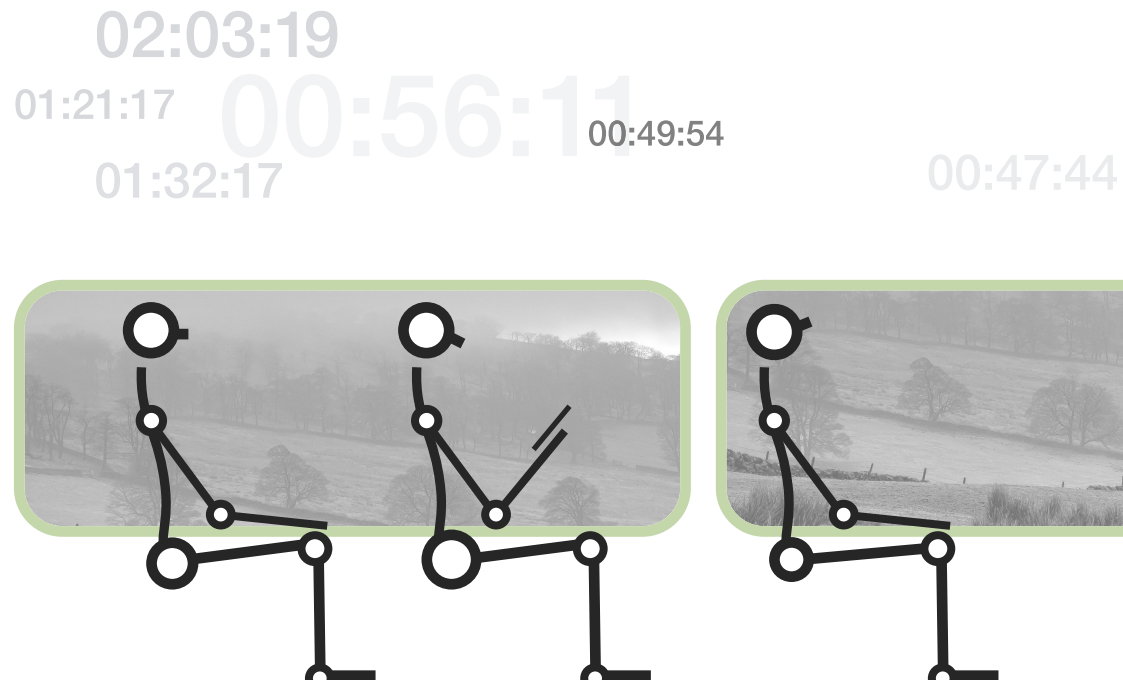


orangebox

Despite the word 'agile' often being used to describe our modern way of working, we still do a great deal of...



# sitting



sitting to work



sitting at work

in fact  
on average  
we sit nine  
and a half  
hours every  
day!

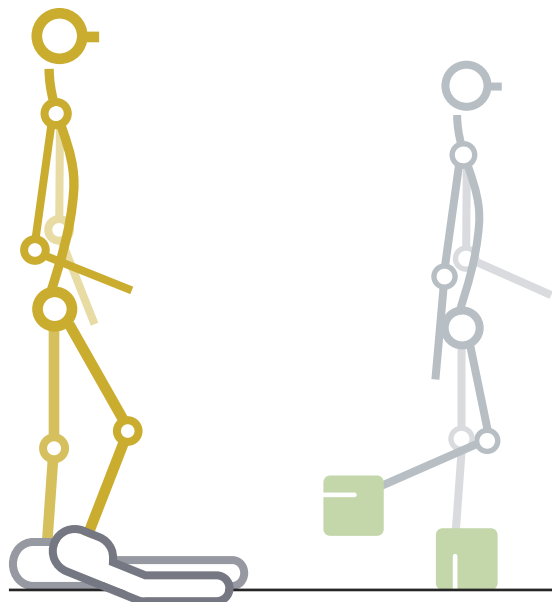
Evidence suggests that during the working week middle-aged office workers are more sedentary than pensioners.

Findings from an NHS survey.

sitting from work

The longer we spend in a seated position, the more important the fit of the seat we're in becomes. It can have a positive or negative effect on our posture and joints, line of sight, wrist and neck comfort, as well as eye strain, blood circulation – even on our digestive systems. And, just as we wouldn't walk for miles in ill-fitting shoes, or go to sleep each night in a bed that's lumpy and too short, we shouldn't be sedentary for extended periods without having the right level of comfort or support in place.

To avoid long-term damage  
you need to get  
**the right fit**

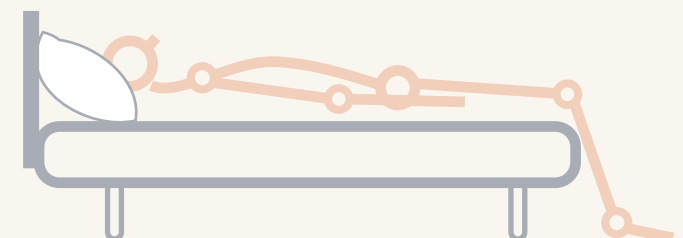


When designing products and spaces, proper consideration needs to be given to ergonomics to ensure that tools, equipment and environments are fit for their intended user population.

By supporting people to perform specific tasks in healthier, safer and more rewarding ways, ergonomics doesn't just help reduce absenteeism but can also help overcome presenteeism.

...we call this

# Proactive Ergonomics



# Welcome to being™

A range of task chairs designed  
with *every body* in mind.

**Being Me** can be precisely tailored to help meet the needs of anyone with specific seating requirements or for those people who spend more of their time at a dedicated workstation.

**Being Us** shares the same visual design but is more of a general use task chair, with solid ergonomic features to suit most people and help them to stay healthy and productive within more agile working environments.



being<sup>me</sup>™



being<sup>us</sup>™



Putting people back in control of their comfort is best achieved by

# being™ simple

With mobile technology & shared workspaces becoming increasingly common, the need for simple, adaptable seating is more important than ever. All too often though, chairs with overly complex adjustments & confusing controls mean we rarely get the best support possible.

The intelligent weight balancing mechanism at heart of the *Being* chair ensures its quickly & simply adapted to suit a wide range of body types. The integrated adjustments for the back, seat and arms are easy to find and intuitive to use. All of this comes in a chair that doesn't compromise on aesthetics or quality, with a soft and tactile design that looks great and is built to last.

*Being* is available with two sizes of seat cushion that are completely interchangeable, without the need for specialist tools or training.

featured opposite – the *Being Me* chair with two tone upholstery (option 1).

Applying user-centred  
design and making a  
feature of

# being™ discreet

Fully ergonomic task chairs can often be a little quirky, with a multitude of complex controls & conspicuous design that render them a bit too different from the norm.

With so much of the ergonomic functionality being cleverly confined to the inside of the chair, we've ensured that your comfort is your business. Whilst the *Being* range doesn't automatically announce to the rest of the office that you require a 'special' solution, its great adaptability means it can be tailored to deliver the right fit, whatever your body type or needs.

With a shared visual design, *Being Me* and *Being Us* work alongside each other seamlessly. Both are available with versatile upholstery options that allow you to define a personality for the chair that fits perfectly with your interior scheme.







Not just a task  
chair, more a place  
to practice

# well-being™

Your chair is the piece of equipment that you're likely to interface with the most during your working day, so it offers a key opportunity to look after yourself. The right chair will not only help improve your performance and productivity levels at work, it will also help you maintain a higher level of fitness for your everyday life.

Being able to fine-tune your chair to suit both your needs and the tasks you're performing can transform the sitting experience and better support your wellbeing throughout your day.

featured opposite – the *Being Us* chair with two tone upholstery (option 2).

# Dimensional and Environmental misfit...

A lack of effective training and motivation leads, all too often, to a misfit between workers and the equipment they interface with, particularly office chairs and desktop accessories such as monitor arms, document holders and input devices.

This issue is even more of a concern within **24-hour or agile shared spaces, where three+ individuals a day may use the same workstation.** The increased variation in employee stature, size and mobility due to a higher ethnic mix, more women in the workplace, an ageing workforce and disability inclusion, means it is even less appropriate to suggest 'one size fits all'.

Back pain is becoming **more common amongst the young**, who have grown up using devices in hostile ergonomic environments.

**In addition, stress has become a major workplace hazard, and is the leading cause of absenteeism.** It's on the rise, made worse by always being connected and having to work in increasingly noisy open-plan environments. When stressed our bodies become tense, causing physical aches and pains... And so the negative cycle continues.



‘We’re an inclusive company,  
we all want the same and have a flat structure,  
but our jobs and needs are slightly different...’

can you tell?’

Sam is on the phone a lot and is using a *Being Us*. He gets intermittent lower back pain probably from his intensive studies hunched over a laptop during his degree finals two years ago. Thanks to the company wellness training, Sam is now enjoying the recline feature of the chair to keep him moving while talking to customers.

Emma is 4’11” and has never had a chair that fits her properly before. She’s using a *Being Me* with a small seat cushion so that she gets great support from the backrest.

Christian is rugby mad, and because of his broad frame needs the armrests to be fully out, so uses a *Being Me* with width adjustable arms.

Simple adjustment is key... If three colleagues share a chair and the only one who knows how to set it up properly is particularly tall, the other two are at greater risk of health problems such as neck strain, backache and fatigue.

# being<sup>me</sup>

The chair's weight balancing mechanism automatically adapts to any size of user but also offers 'quick-turn' tension adjustment to allow simple fine tuning for individual requirements.

With those people with back complaints in mind, the chair's back lock control allows users to find the most comfortable set position for the back angle and have it stay just where they want it.

The chair's seat-angle adjustment allows an extra layer of comfort control and is especially useful for anyone spending more time at a fixed workstation.

The multi-adjustable arms have durable and tactile PU pads that can both rotate and slide, providing greater adaptability and better support for more people. The arms can also be specified with additional (cam lock) width adjustment if its required.

Integrated seat depth & back height adjustments are fitted on every chair, along with an inflatable lumbar air cell for fine tuning back & seat comfort to individual needs.

All *Being Me* chair backs are compatible for retro-fitting the *Being* chair headrest and no additional mechanical fixings are required.

---

## Standard product features (chair model with arms)

- Seat height adjustment
- Seat depth adjustment
- Seat angle adjustment
- Back height adjustment
- Back angle adjustment (with back lock)
- Inflatable lumbar air-cell
- Compatible with retro-fitting the *Being* headrest
- Multi-adjustable arms (arm pads slide and rotate)

featured opposite – the *Being Me* chair with standard upholstery.



## Standard product information

**Castors:** Black nylon. 60mm hard tyre, freewheel castor on all task chairs.

**Base:** Black nylon 5 star base. 390mm diameter.

**Gas lift:** Black steel body and piston with 130mm travel.

**Mechanism:** Black finish. Synchronous, weight balancing movement with up to 20 degrees of back recline and 6 degrees of seat incline when fully reclined.

**Fitted with**

- 'quick turn' side tension adjustment control for fine tuning the recline tension
- (3 position) back lock
- seat height adjustment control
- additional 5 degree seat angle adjustment (forward tilt).

**Seat pan:** Black, polypropylene. Integrated seat depth control with 70mm of adjustment.

**Seat cushion:** Combustion Modified High Resilience (CMHR) moulded foam. 485mm width, 475mm depth (front to back).

**4D arms:** Black nylon arm supports with black, soft touch PU pads.

- 100mm height adjustment
- 360 degree arm-pad rotation (delivers 30mm width adjustment per pad)
- 40mm of arm-pad slide (front to back).

**Backrest:** Fully upholstered with 75mm height adjustment.

Integrated lumbar air cell on all *Being Me* chairs (delivers approx. 40mm additional seat depth adjustment).

All *Being Me* HB and HBA chair backs are compatible for retro fitting the *Being* chair headrest (no additional mechanical fixings required for fitting).

**Headrest:** Black nylon fittings. Neck roll-pad upholstered in the same fabric as the back cushion (inner panel – in the case of two-tone option). 70mm height adjustment & double articulating neck-roll adjustment.

## Optional up-charge information

**Castors:** All options in black finish:

- 60mm freewheel soft tyre
- 60mm brake unloaded hard tyre
- 60mm brake unloaded soft tyre.

**Glides:** Black, 65mm – Fitted as standard on chairs with counter-height gas lifts but can also be specified as an option on all standard task chairs.

**Gas lift:** Low height and counter-height options available (counter-height comes fitted with foot ring & glides).

**Arm width adjustment:** Additional (cam-lock) width adjustment, 40mm per arm.

**Small seat cushion:**

Combustion Modified High Resilience (CMHR) moulded foam 440mm width, 455mm depth (front to back).

**Coccyx cut-out:**

Seat cushion modified in the coccyx area.

**Luxury upholstery:**

Additional quilted layer added to the seat cushion cover.

**Two tone upholstery:**

- Two tone option 1 – Back and seat cushions in different colours
- Two tone option 2 – Back outer and seat side panels in fabric colour 1 / back inner and seat pad panels in fabric colour 2.



**Being Me HB** (no arms)

W 660mm | D 660mm | H 980mm

SD 360mm-460mm | SH 418-530mm | Wt 15.1 kg



**Being Me HBA**

W 660mm | D 660mm | H 980mm

SD 360mm-460mm | SH 418-530mm | Wt 16.8 kg



**Being Me HBH** (no arms with headrest)

W 660mm | D 660mm | H 1060mm

SD 360mm-460mm | SH 418-530mm | Wt 16.0 kg



**Being Me HBHA**

W 660mm | D 660mm | H 1060mm

SD 360mm-460mm | SH 418-530mm | Wt 17.7 kg

# being<sup>us</sup>

The chair's weight balancing mechanism automatically adapts to any size of user, taking away the need for individual tension adjustment & simplifying chair set-up.

The travel limiter control allows the back to recline to three different angles but can only ever be locked in the upright position, to help ensure optimal back support is provided throughout the day.

The height adjustable arms have durable and tactile PU pads that can be specified with additional width adjustment if its required.

Integrated seat depth & back height adjustment are fitted on every chair.

---

## Standard product features (chair model with arms)

- Seat height adjustment
- Seat depth adjustment
- Back height adjustment
- Back angle adjustment (with travel limiter)
- Height adjustable arms

featured opposite – the *Being Us* chair with two tone upholstery (option 2).



## Standard product information

**Castors/glides:** Black nylon. 60mm hard tyre, freewheel castor on all task chairs.

**Base:** Black nylon 5 star base. 390mm diameter.

**Gas lift:** Black steel body and piston with 130mm travel.

**Mechanism:** Black finish. Synchronous, weight balancing movement with up to 20 degrees of back recline and 6 degrees of seat incline when fully reclined.

**Fitted with**

- 4 position travel limiter (provides back-lock in the upright position)
- seat height adjustment control
- tension comfort regulator.

**Seat pan:** Black, polypropylene. Integrated seat depth control with 70mm of adjustment.

**Seat cushion:** Combustion Modified High Resilience (CMHR) moulded foam. 485mm width, 475mm depth (front to back).

**2D arms:** Black nylon arm supports with black, soft touch PU pads (100mm height adjustment).

**Backrest:** Fully upholstered with 75mm height adjustment.

**Headrest:** Black nylon fittings. Neck roll-pad upholstered in the same fabric as the back cushion (inner panel – in the case of two-tone option). 70mm height adjustment & double articulating neck-roll adjustment.

## Optional up-charge information

**Castors:** All options in black finish:

- 60mm freewheel soft tyre
- 60mm brake unloaded hard tyre
- 60mm brake unloaded soft tyre.

**Glides:** Black, 65mm – Fitted as standard on chairs with counter-height gas lifts but can also be specified as an option on all standard task chairs.

**Gas lift:** Low height and counter-height options available (counter-height comes fitted with foot ring & glides).

**Arm width adjustment:** Additional (cam-lock) width adjustment, 40mm per arm.

**Small seat cushion:**

Combustion Modified High Resilience (CMHR) moulded foam 440mm width, 455mm depth (front to back).

**Coccyx cut-out:**

Seat cushion modified in the coccyx area.

**Luxury upholstery:**

Additional quilted layer added to the seat cushion cover.

**Lumbar air cell:**

Inflatable lumbar air cell (with hand pump) integrated into the back cushion that delivers approx. 40mm additional seat depth adjustment.

**Two tone upholstery:**

- Two tone option 1 – Back and seat cushions in different colours
- Two tone option 2 – Back outer and seat side panels in fabric colour 1 / back inner and seat pad panels in fabric colour 2.

The images below show the small seat cushion (no cost option).



**Being Us HB** (no arms)

W 660mm | D 660mm | H 980mm

SD 360mm-460mm | SH 418-530mm | Wt 14.2 kg



**Being Us HBA**

W 660mm | D 660mm | H 980mm

SD 360mm-460mm | SH 418-530mm | Wt 15.8 kg



**Being Us HBH** (no arms with headrest)

W 660mm | D 660mm | H 1060mm

SD 360mm-460mm | SH 418-530mm | Wt 15.0 kg



**Being Us HBHA**

W 660mm | D 660mm | H 1060mm

SD 360mm-460mm | SH 418-530mm | Wt 16.7 kg

Ergonomics is part of the Orangebox DNA. For the past 20 years 'Active Ergonomics', our consultancy wing has been advising clients on proactive and rehabilitative ergonomic strategies to support a healthier and happier workforce. It's one of the few workplace consultancies formally registered with the Chartered Institute of Ergonomics and Human Factors.

Our ergonomists and health & safety trainers give clients the confidence of knowing that products conform to the latest ergonomic standards, and the reassurance of knowing that their inclusive wellbeing strategies will be supported not just on day one, but for the life of the product, and in light of changing workplace needs.

**active**  
**ergonomics**  
Enhancing Wellness at Work

The *Being* chair range has been designed to conform to the following British & European standards:

**BS EN 1335 - 1 : 2000**

Office furniture. Office work chair. Dimensions. Determination of dimensions

**BS EN 1335 Parts 2&3 : 2009**

Part 2: Office furniture. Office work chair. Safety requirements.

Part 3: Office furniture. Office work chair. Test methods

**BS EN 5459 : 2000 (+A2 : 2008)**

Specification for Performance Requirements and Tests for Office Furniture.

**BS EN ISO 9241-5 : 1999**

Ergonomic requirements for office work with Visual Display Terminals (VDTs).  
Workstation layout.

## orangebox

**Orangebox Smartworking®**

38 Northampton Road, London EC1R 0HU,  
United Kingdom.  
T. +44 (0)20 7837 9922  
email. showroom@orangebox.com

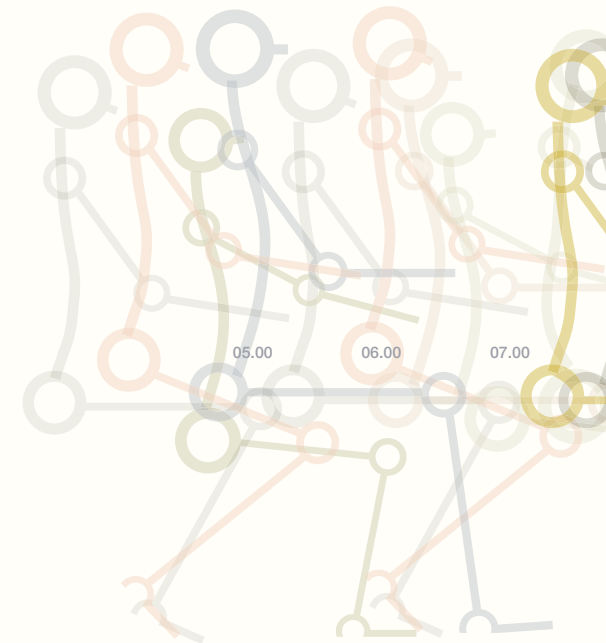
**Orangebox Huddersfield**

Bates Mill, Colne Road,  
Huddersfield HD1 3AG, United Kingdom.  
T. +44 (0)1484 536 400  
email. huddersfield@orangebox.com

**Head Office & Manufacturing**

Orangebox Limited, Parc Nantgarw,  
Cardiff CF15 7QU, United Kingdom.  
T. +44 (0) 1443 816 604  
email. sales@orangebox.com

[www.orangebox.com](http://www.orangebox.com)





orangebox  
smart  
working®

Solutions for Connecting People

