

ATHENA POWER RAIL

Above Desk Power Solution





ATHENA POWER RAIL

Above Desk Power Solution

Athena series power rails deliver a stylish low profile solution providing connectivity in the workspace where it is easily accessible, above the worktop. With a range of configurations are available, comprising of power, USB charging, data and/or AV, Athena rail comprises of an anodised silver aluminum body with white or black end caps and outlets.

All white and/or black combinations are also available, plus a range of bright anodised coloured bodies.

Features & Benefits

- » Fusing options of either 3A or 5A, via readily available BS 1362 "plug top" fuses.
- » Data cabling supplied pre-wired or simply retro fit options.
- » Options to include electrical protective devices, master switching and international socket outlets.
- » Can be customized to any length and specification you require



UA2Q1UAC310**/2**



UA2Q210**/2**



UA2Q2UAC310**/2**



UA2Q2102A20**/2**

Colours Available

○ White ● Black

Product Details

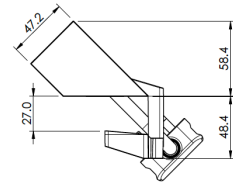
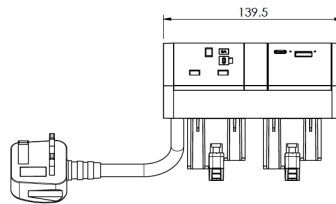
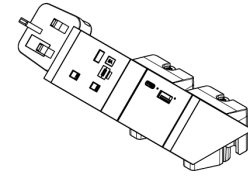
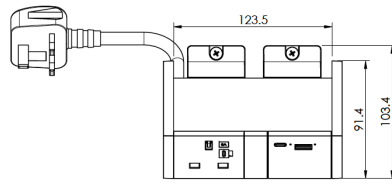
UA2Q1UAC310**/2**	Athena 2 Rail. 1 Power - 3.15A. Dual USB charger 30W - A+C. 1m Starter lead - BS13A.
UA2Q2102A20**/2**	Athena 2 Rail. 2 Power - 3.15A. 2 Data CAT6 UTP - 2m. 1m Starter lead - BS13A.
UA2Q210**/2**	Athena 2 Rail. 2 Power - 3.15A. 1m Starter lead - BS13A.
UA2Q2UAC310**/2**	Athena 2 Rail. 2 Power - 3.15A. Dual USB charger 30W - A+C. 1m Starter lead - BS13A.
UA2Q4102A20**/2**	Athena 2 Rail. 4 Power - 3.15A. 2 Data CAT6 UTP 2m. 1m Starter lead BS13A.
UA2Q4UAC310**/2**	Athena 2 Rail. 4 Power - 3.15A. Dual USB charger 30W - A+C. 1m Starter lead - BS13A.
UA2Q410**/2**	Athena 2 Rail. 4 Power - 3.15A. 1m Starter lead BS13A.
MDCLA**	Desk clamp—Athena 2 no. required per rail
TESA02	Power strip self—adhesive fixings

Notes:

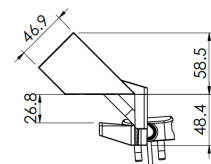
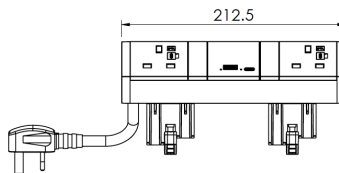
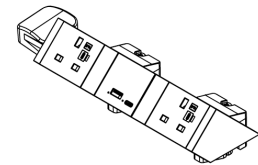
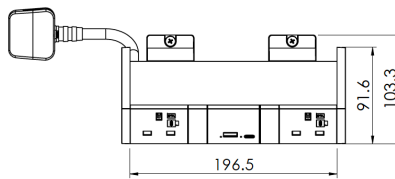
- » **End cap and outlet colour: WT (white) or BK (black)
- » Body colour/finish—Anodised silver. Alternative finishes upon request
- » Alternative lead lengths, available upon request

Product Drawings

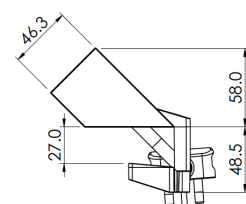
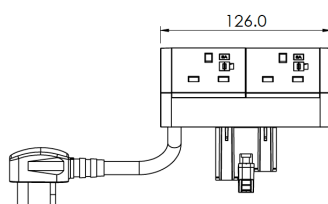
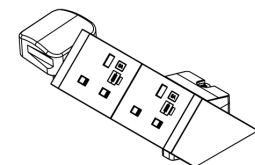
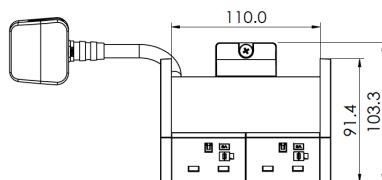
UA2Q1UAC310**/2**



UA2Q2UAC310**/2**



UA2Q210**/2**



Product Specifications

Input	100-240V AC; 50/60Hz, 0.8A
USB outlets	1 x Type-C PD3.0 fast charge
	1 x Type-A standard fast charge
Standby power	<0.15W
Over voltage protection	20-24V
Overcurrent protection	4.3-5.5A
Short circuit protection	USB will shut down if short circuit detected and will recover once short circuit removed.
Over power protection	70W
Operating temperature range	0-40C
Compliance	AS/NZS 60950.1
	CISPR32:2015

USB-C PD Specification

Max standard output with no connected devices in Port 1	1.5A @ 20V / 2A @ 15V / 3A @ 9V
Max output with Type-A Port engaged	0.75A @ 20V / 1A @ 15V / 1.5A @ 9V

USB-A Specification

Max standard output with no connected devices in Port 2	2.1A @ 5V
Max output with Type-C Port engaged	1A @ 5V