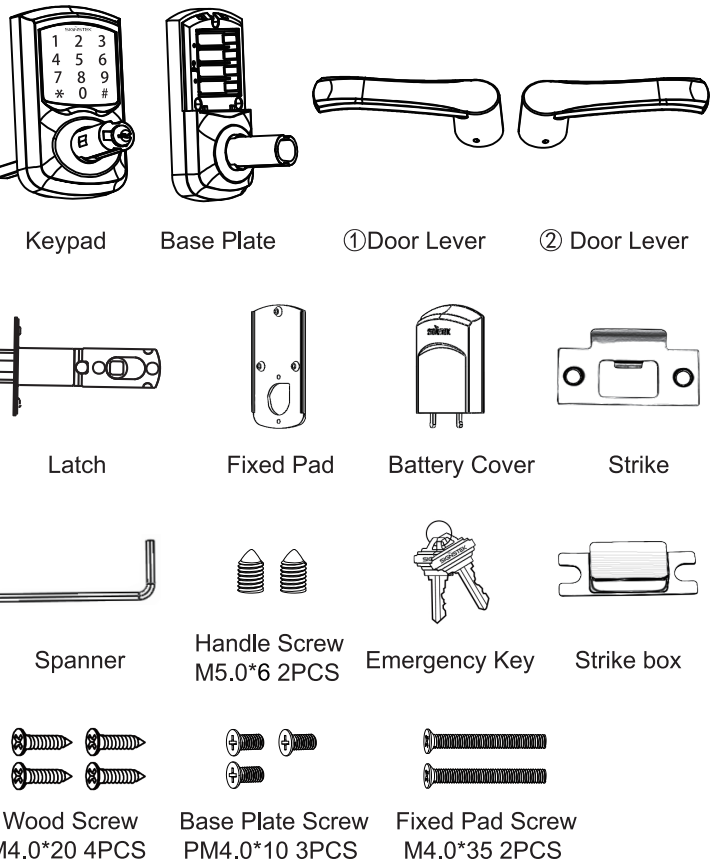


# Electronic Touchscreen Door Lock User Guide

## A. Package Contents



- ☆ Spare Screws: 1\*Fixed Bolt, 1\*Handle Screw, 1\*Base Plate Screw
- ☆ Before installation, please check the accessories in the package according to the above list

## B. Preparation

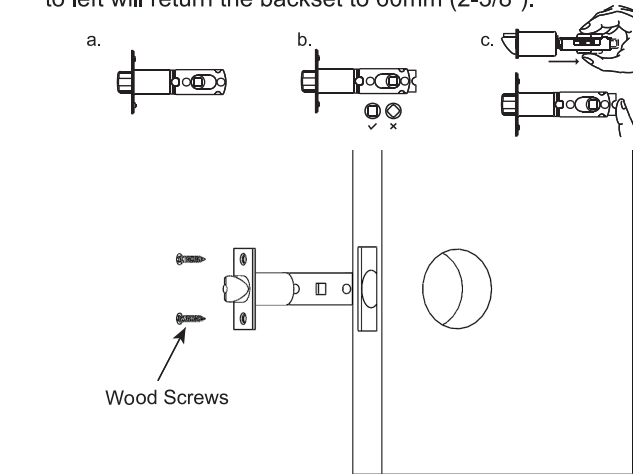
- 1) Tool: Phillips screwdriver
  - 2) Power: DC6V, 4 AAA alkaline batteries (1.5V)
- Note: Do not use alkaline batteries with carbon-zinc batteries or batteries of different brands. Do not use the new batteries with the old one.

## C. Installation

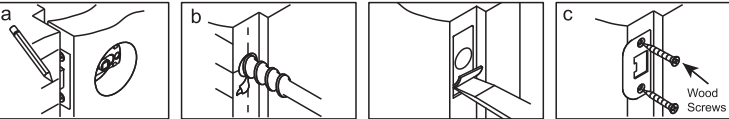
- 1 Punching in the door according to the dimension requirement.
  - 1) Backset is distance from door edge to centre of hole on door face, adjust Latch fit both backset of 2-3/4" (70mm) or 2-3/8" (60mm)
  - 2) Select the height and backset as desired on the door face; use the Template as an indication to mark the centre of the circle on the door face and the centre of the of the door edge.
  - 3) Use the marks as a guide to drill a hole  $\phi 2-1/8"$  (54mm) through the door face for the lockset, then a hole of  $\phi 1"$  (25.4mm) for latch.
- 2 Install the Latch and secure it with 2 Wood screws.

The latch can be adjusted to 2-3/8" (60mm) or 2-3/4" (70mm).

  - a. The backset shown on the left is 60mm (2-3/8").
  - b. Pull the cam toward right to extend the backset to 70mm (2-3/4").
  - c. The backset shown in figure C is 70mm (2-3/4"). Pull the cam back to left will return the backset to 60mm (2-3/8").

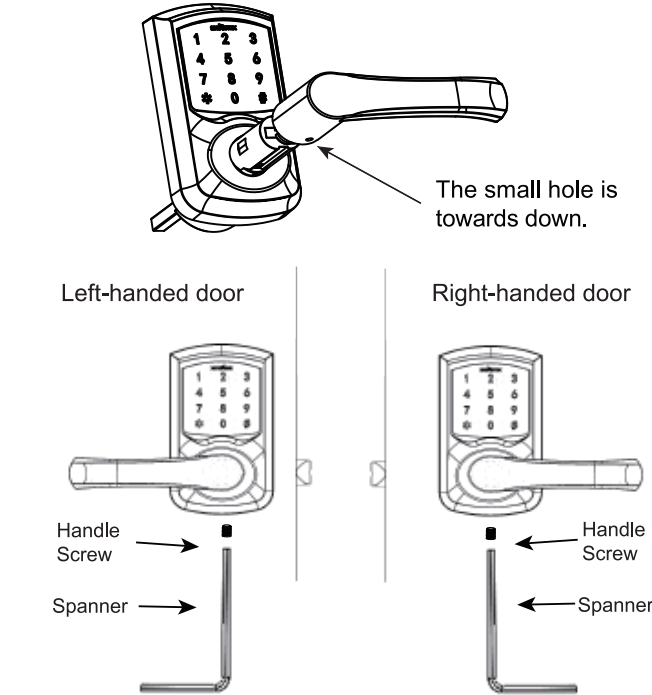


### 3 Install Strike

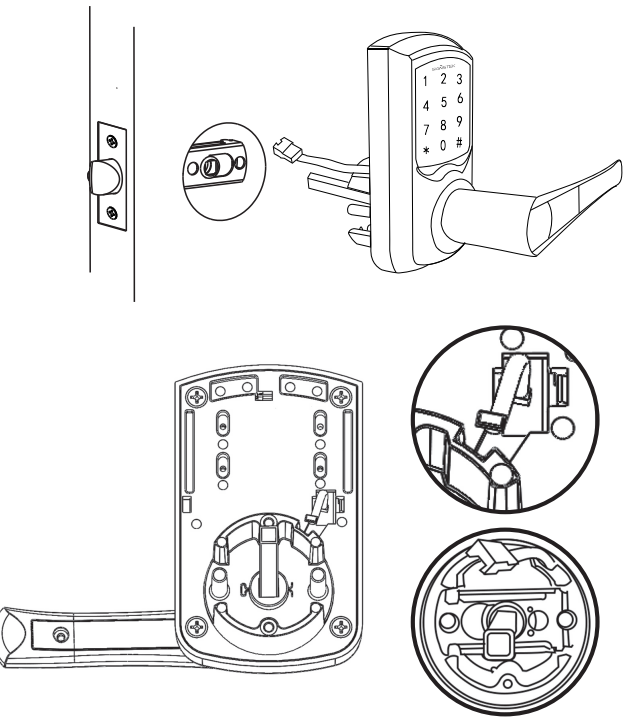


- a, Close door and mark horizontal centre of Latch on to door frame. Mark vertical line where door edge meets frame and measure in half of door thickness to find vertical centre.
- b, Extend both lines until they intersect and drill a 1" (25.4mm) hole to 1/2" (15mm) depth. Position Strike plate and mark around edge.
- c, Chisel fram to approx 1/16" (1.6mm) depth or until Strike sits flush. Using two Wood Screws fix Strike to the frame.

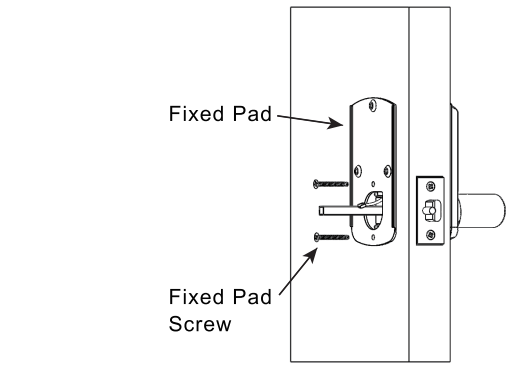
### 4 Install the lever onto the lock and use the handle screw and the wrench to fix it.



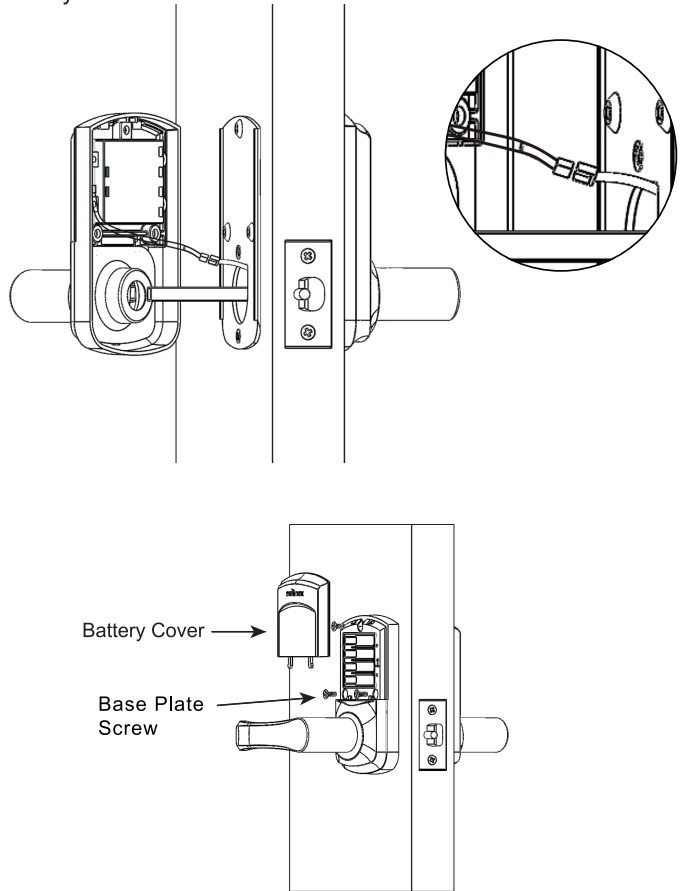
### 5 Insert the Keypad into the door through the hub of latch. Pass the IC wire above the Latch to the interior side of the door. Note: make sure the IC wire is put in the slot in back of Keypad.



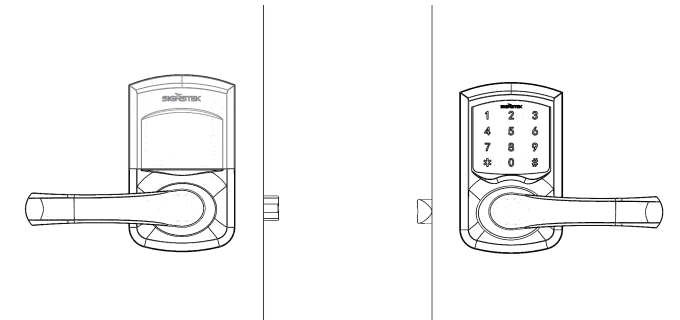
### 6 Install the Fixed Pad with two Fixed Pad Screws, and make sure it is paralleled with Keypad and door edge. Note: make sure Sponge side is near to door.



### 7 Connect the IC wire in the Keypad into the Base Plate. Secure the Base Plate on the Fixed Pad with 3 Base Plate Screws. Take off Battery Cover and insert 4 AAA batteries and slide the Battery Cover.



### 8 Door lock installation is completed. Turn inside and outside handle to see if it turns freely.



## More installation and programming information

To learn how to install and program this product, scan the codes below with your smart phone.



Signstek ST-668  
Installation Guide Video



Signstek ST-668  
Programming Guide Video

If you have any questions about any part of installation or programming, don't return. Our Signstek Customer Service are ready for help.

Website: [signstek.com](http://signstek.com)  
Email: [sales@signstek.com](mailto:sales@signstek.com)

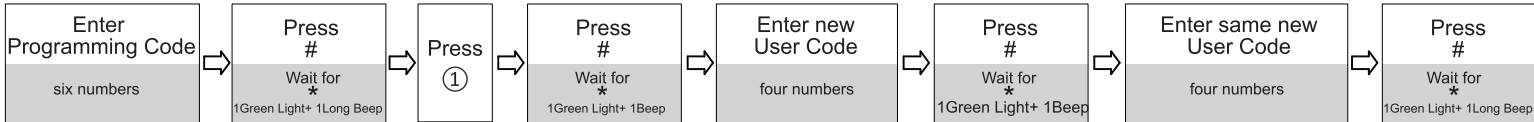
D. Programming Guide

Programming Code (PC)      User Code (UC)

Default Programming Code: 000000 (**PC must be 6 digits in length**)                      Default User Code: 1234 (**UC must be 4 digits in length**)

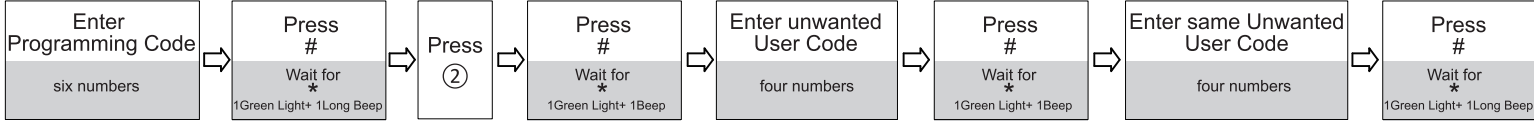
Note: 1.After setting the new user code, the default code will be invalid.If you delete all user code, the default code will be active.  
2.Before programming,please activate the keypad by touching any key.  
3.Only when the keypad light is on, are the operations valid. If the keypad light is off, you need to reoperation.

1 Add User Codes:

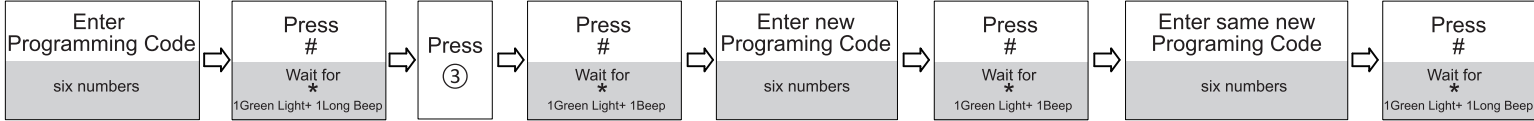


These four numbers must be different from the four numbers of the programming code.It allows for at most 9 sets of code.

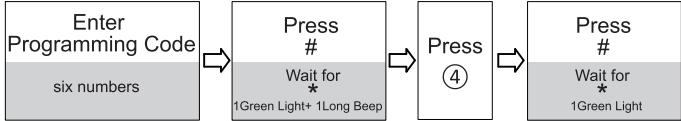
2 Delete User Codes:



3 Change the Programming Code:

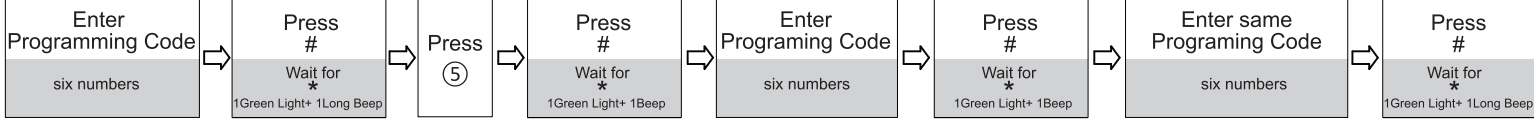


4 Toggle Mute On/Off:

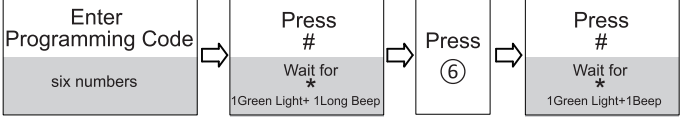


Repeat the same steps to turn beeper on.

5 Delete All User Code:



6 Password-free Mode On/Off:



Password-free Mode: When your guests come, you can set this mode so your guests can press the door handle to open the door without any code.Repeat the same steps to turn off.

7 Code privacy:

You can add any digits around the code,the digits length can up to 40 including correct codes.As long as the correct code is surrounded around the 40 digits,you can unlock the door.For example:your UC is 1234.You can enter"45671234789" to unlock the door.

8 Restore Default Settings:

Take off the battery cover. Insert a pin into the hole next to the batteries for 6 seconds. You will hear 5 long beeps and 3 short beeps. The restoration will be completed as soon as the 3 short beeps are heard.

9 Use Emergency Key:

Remove the handle with the spanner and insert the key to turn.Please note:After you insert the key and turn the key clockwise,you also need to turn the handle clockwise.

10 Loww-battery Alarm:

When there are 10 beeps after unlocking, it means that batteries will run out. Please replace the batteries.

E. Trouble shooting

When there are 3 red light flash on the star key and 3 beeps,it means operation error.The possible reasons are as follows.

Problems	Possible Reasons	Solutions
Cannot add user code	Second user code entered did not match the first one;	Enter correct UC and confirm consistence;
	Add more than 9 sets code	Delete the unnecessary code and then add new one
	The first 4 digits are same as the programming code	Make sure the new UC is different from the first 4 digits of PC
	The new UC is not 4 digits in length	UC must be 4 digits in length
Cannot delete user code	The code do not exist or the second code entered did not match the first.	Enter correct UC and confirm consistence
Cannot change the PC	Enter wrong existing PC or second new PC entered did not match the first new one.	Enter correct PC and confirm consistence
	The first 4 digits are same as the user code	Make sure the first 4 digits of new PC is different from the user code
	The new PC is not 6 digits in length	PC must be 6 digits in length
Cannot unlock	Enter the wrong user code	Enter correct UC
	Forget the user code	Use the emergency key to unlock and then reset the code
Cannot program	The keypad light is off when operating	Restart operation and do each step before the keypad light is off

Other problems	Possible Reasons	Solutions
The keypad light cannot be activated	There is no batteries installed, or the batteries are dead or reverse positive and negative poles of batteries	Install 4 AAA alkaline batteries (1.5V). Change the batteries when low-battery alarm.
	The wire is disconnected	Disassemble the inside lock and check whether the wire is well connected.
	Continuously enter wrong user code for more than 5 times	Wait for 1 minute and then enter the correct code
The handle is loose or falls off.	The screws are loose or not installed	Check whether screws are well-installed.
After the keypad is activated, it is not responsive when enter the code	Wear the cotton gloves to enter the code	Take off the cotton gloves and then enter again
	The keypad is covered by dirt	Clean the dirt
Any 4 digit code can unlock the door	Password-free Mode is on	Turn the Password-free Mode off
Run out of batteries in few days	The batteries are not 4 AAA alkaline batteries (1.5V) or misuse the old batteries with new one.	Make sure the batteries are new 4 AAA alkaline batteries (1.5V)

F. Lock Parameters

- 1.Power supply:DC6V,4AAA batteries
- 2.Quiescent current≤30uA
- 3.Working current≤250mA
- 4.Installation specifications:
  - Door thickness 1.38inch-1.97inch
  - Door edge to circle center distance:2.36inch or 2.76inch(adjustable)
- 5.Front plate size:length 5.12inch X wide 3.07inch X height 1.18inch
- 6.Rear plate size:length 5.12inch X wide 3.07inch X height 0.98inch
- 7.Handle size:length 5.20inch X wide 1.18inch X height 1.89inch
- 8.Working temperature:-30℃ to 66℃ / -22℉ to 150.8℉

User codes (Up to 9 sets of User Code can be Saved)

Name	User code			
Example:	1	2	3	4

G.Warranty

Thank you for purchasing our product from our Signstek store.

The warranty period is within 2 years from the date of purchasing.

This limited warranty does not cover human-made damage,the appearance was artificially stained,scratched,broken,stains and so on.

This limited warranty does not cover any damage,deterioration or malfunction resulting from the repair or installation of this product by anyone unauthorized by Signstek.

Any questions please contact us:  
Website:www.signstek.com  
Email:sales@signstek.com

