



For damp, gas
and structural
waterproofing
systems the
difference
is Visqueen

[CLICK TO ENTER](#)

VISQUEEN



Our commitment to innovation is supplying sustainable products, solutions and systems that contribute to the success of all our customers

Contents.....Page

About5
Specialist Centres10
Training Academy13

Damp Protection.....15
Gas Protection.....39
Structural Waterproofing.....57
Jointing & Vapour Tapes.....97

How to navigate this product guide

1. Each section can be reached by clicking on the subject details in the contents pages.
2. You can navigate through this document using the left and right arrows in the bottom right corner of each page.
3. Clicking the Visqueen logo will take you to the relevant sections of our website, e.g. Visqueen Structural Waterproofing
4. Clicking on the individual product logos will take you to the technical data and specifications pages of our website.
5. Clicking the home icon returns you to this page.



“There is no ‘one design fits all’ in this game and all the issues on our site were resolved with clarity; we all knew what was happening every step of the way”

Phil Knowles - Octopus Building Services



The difference is Visqueen

For more than 50 years, everybody from architects, specifiers, structural engineers and contractors have trusted Visqueen services and products to make their buildings and structures stronger, more durable, more sustainable, more appealing - and more memorable.

As the market leader in the manufacture and supply of gas protection and below ground waterproofing systems, we offer complete support at every stage in the specification and supply chain process.

Combined with our comprehensive range of advanced products, dedicated technical support specialists, best in class level of customer service and our training academy offering CPD seminars it's easy to see why the difference is Visqueen.

The following pages will give you an idea of the range of services and products we supply.





“We have gained so much valuable insight throughout that we can take with us onto our next projects”

Simon Monk – McDermott Building & Civil Engineering

Visqueen offer an essential source of advice to ensure architects and specifiers using our systems and solutions within their designs meet the required:

- Building Regulations.
- House Building Warranty provider standards.
- British Standard publications such as BS8102:2009 Code of Practice for protection of below ground structures against water from the ground.

As well as being able to provide the industry with:

- Nationwide site support service that is unique in the market.
- Specialists in structural waterproofing and gas protection.
- End-to end project support and specification.
- CAD detailing, NBS specs and product installation guidance.
- CPD certified seminars
- With a team of highly trained and experienced technical experts offering the highest level of support to our customers

Visqueen technical team. Support every step of the way

Our technical team have worked on virtually every type of construction project. From commercial buildings and residential homes to some of the country's most recognisable structures.

All our design experts have undergone full CSSW training and have PI insurance backing in order to provide complete peace of mind throughout the construction period and following its completion.

Whatever the requirement - from gas protection and below ground waterproofing we work with all stakeholders to support your project efficiently and cost-effectively at every stage.

As the UK's leading authority on gas protection and below ground waterproofing we are ideally placed to ensure you choose the most suitable, durable and sustainable systems and technologies to make sure that your project is protected for years to come, making it easy to see why the difference is Visqueen.





Supplying the right tools to our Specialist Centre network

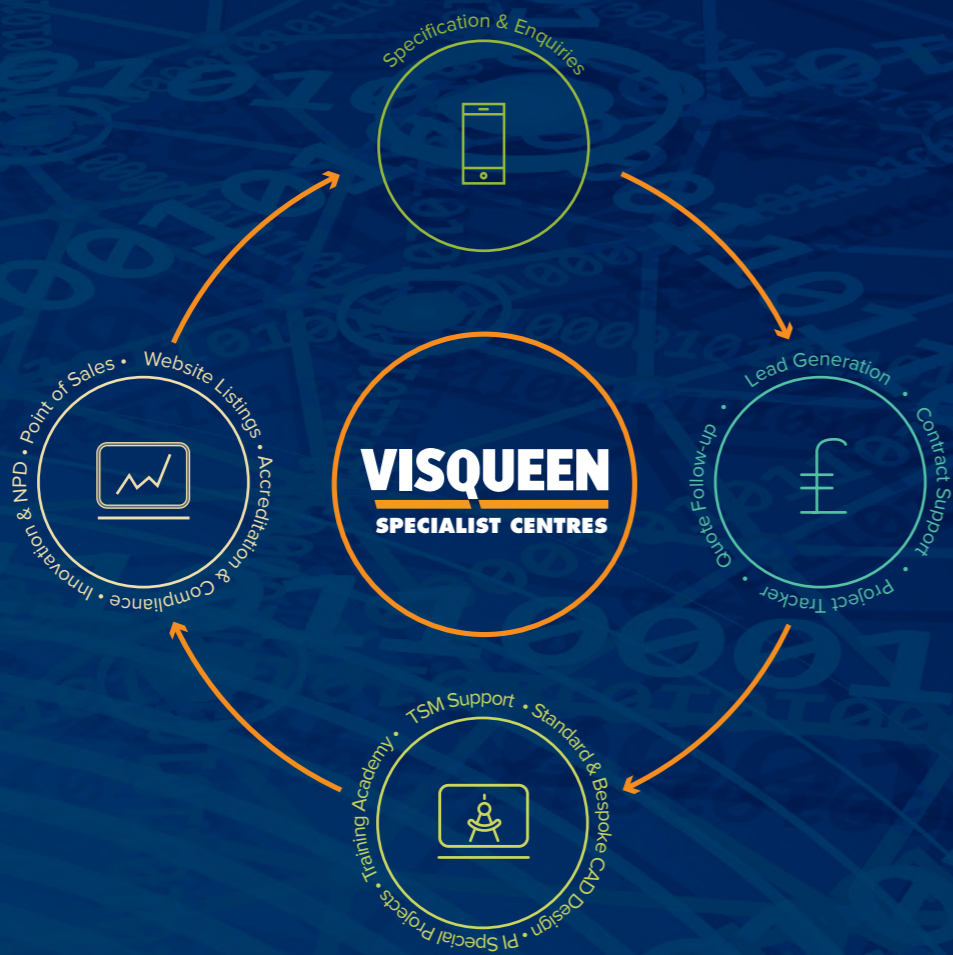
As the market leader in the manufacture and supply of structural waterproofing and gas protection systems Visqueen understands the importance of the role played by our Specialist Centre network.

As one of our specialist stocking centres you'll benefit from our comprehensive range of innovative products, dedicated technical support specialists and best-in-class customer service to help you solve your customer challenges.

We are also part of the RPC bpi group which allows us to draw upon the expertise of one of the world's leading suppliers of high quality, value-added flexible solutions making it easy to see why the difference is Visqueen.

VISQUEEN
SPECIALIST CENTRES





About Specialist Centres

To support you in sourcing your required Visqueen products via our Specialist Centres, you will see in our new brochure that all of the products listed have at least one of the Specialist Centre symbols highlighted on each page. This new and improved distribution model, will help you to source all of our products via your chosen Specialist Centre more efficiently than ever before.

For full details on your local Visqueen Specialist Centre, please see the stockists section on our website www.visqueen.com



Damp Protection

Damp Proof Courses, Damp Proof Membranes, Vapour Control Layers, Temporary Protective Sheeting and Megafilm.



Gas Protection

Gas Proof Membranes, Ultimate Membranes, Tanking Membranes and a selection of Damp Proof Courses.



Masonry

Damp Proof Courses.



Structural Waterproofing

Ultimate Membranes, Liquid Membranes, Tanking Membranes, Stormwater Protection, and Cavity Drain System.



Our Specialist Centres, designed to dig you out of a hole



Specialist Centre benefits

As part of our Specialist Centre network you will have access to:

- Visqueen project specifications
- Our dedicated technical and sales support
- Best available stock rates
- 3 day lead time into stock
- Bespoke marketing support
- Stockist listing on the Visqueen website
- Targeted promotions via website and sales incentives
- Regular business reviews
- Access to the Visqueen Training Academy





SPECIAL PROJECTS
VISQUEEN
 SPECIAL PROJECTS
 PROFESSIONAL INDEMNITY

SPECIAL PROJECTS
VISQUEEN
 WATERPROOF DESIGN SERVICES
 SPECIAL PROJECTS
 GAS DESIGN SERVICES

CPD Seminars & Training Academy



Gas Protection CPD
 The specification, technical design, and installation of gas protection systems, enabling the sustainable regeneration of brownfield sites.



Structural Waterproofing CPD
 The specification, technical design, and installation of structural waterproofing systems for protection against water and damp ingress in both above and below ground projects.



Visqueen Training Academy
 We are now able to offer exclusive in depth training opportunities on a wide variety of Visqueen products at our Training Academy.

To arrange your free CPD seminar or to attend a Visqueen Training Academy course, please complete our online form or call us on **0333 202 6800**

Training is an investment in the future of your business

A new dedicated training academy developed by the industry for the industry that has been purpose built by Visqueen to enhance excellence and boost the productivity of the construction sector.

Created in consultation with industry partners to meet the needs of an industry that is undergoing unprecedented technological change, the Visqueen Training Academy will help you embrace these new challenges.

The new Training Academy consists of a teaching room for theory based learning, and nine different training bays where attendees will receive practical insight and instruction. All our courses will be delivered by experienced professionals who understand what it takes to get the job done.



| Contents | Page |
|--|-------------|
| Damp Protection | 15 |
| Damp Proof Course (DPC) | 18 |
| Zedex CPT High Performance DPC..... | 18 |
| Zedex Housing Grade DPC | 19 |
| Zedex High Bond DPC | 20 |
| Polyethylene DPC | 21 |
| Preformed Unit | 22 |
| Gas Resistant DPC | 24 |
| Ultimate DPC | 25 |
| Damp Proof Membranes (DPM) | 27 |
| High Performance DPM | 28 |
| EcoMembrane® | 29 |
| Why use High Performance DPM | 30 |
| Vapour Control Layers (VCL) | 33 |
| Vapour Check | 34 |
| Vapour Barrier | 35 |
| High Performance Vapour Barrier | 36 |





Damp Protection

The difference is Visqueen now protects every second new home in the UK

Visqueen has become synonymous with damp protection. Thanks to the introduction of market leading products such as Zedex DPC we now protect every second new build home in the UK.

We are specialists in eradicating rising damp from the ground, stopping damp from below the ground, preventing rain penetration and controlling condensation. Whatever the cause of damp in your property, we have the solution to cure it.

And with our Visqueen Damp Protection Centres, a network of national and independent builders' merchants and stockists, we can supply our comprehensive range of damp protection systems and solutions to customers throughout the UK.



Product selector

Application

| | |
|--|--|
| Low loading applications | Visqueen Zedex High Bond DPC |
| High loading applications | Visqueen Zedex CPT High Performance DPC Visqueen Ultimate DPC |
| Domestic/residential construction | Visqueen Zedex CPT High Performance DPC Visqueen Zedex Housing Grade DPC Visqueen Zedex High Bond DPC Visqueen Polyethylene DPC Visqueen Ultimate DPC Visqueen GR DPC |
| Low permeability to Radon | Visqueen Zedex CPT High Performance DPC Visqueen Zedex High Bond DPC Visqueen Ultimate DPC Visqueen GR DPC |
| Can be used as Cavity Tray i.e. downward passage of water | Visqueen Zedex CPT High Performance DPC Visqueen Zedex Housing Grade DPC Visqueen Zedex High Bond DPC Visqueen Ultimate DPC Visqueen GR DPC |
| Methane resistant and Carbon Dioxide | Visqueen GR DPC |

Damp Proof Courses

Damp Proof Course (DPC) and cavity tray systems for incorporation into masonry wall constructions to prevent the ingress of damp in buildings and manage the downward passage of water.



Put the market leading DPC to the test and discover why the difference is Visqueen.

Request your Zedex sample kit – call us today on +44 (0) 333 202 6800



Visqueen Zedex CPT High Performance Damp Proof Course (DPC) and Pre-formed Units (also known as cloaks) are manufactured from co-polymer thermoplastic (CPT) providing all the characteristics necessary for it to perform effectively for the lifetime of the building in which it is incorporated. It has excellent performance under high compressive loads.

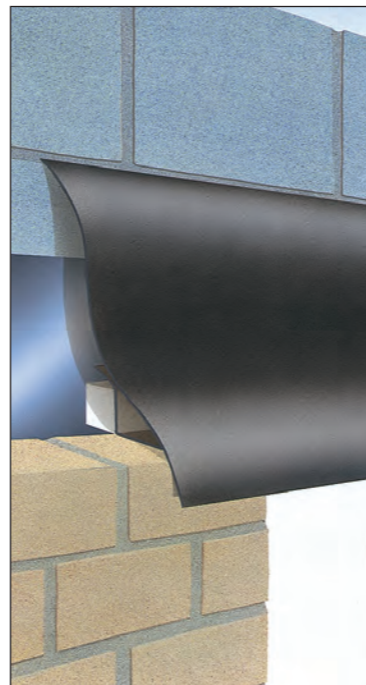
- Outperforms all other high performance flexible DPCs
- Contains no hazardous pitch or PVC plasticizers
- Excellent tear resistance under high compressive loads
- Low permeability to radon
- BBA Certificate No.94/3059

System Components

- Visqueen Zedex Jointing Tape
- Visqueen DPC Surface Fixing System Strip/Pins
- Visqueen Preformed Cavity Tray Units
- Visqueen Pro Detailing Strip



Detail showing built in cavity tray



Detail showing built in cavity tray above opening

Typical Applications

- Suitable for use as a DPC in all types of building construction
- High loading applications
- Can be used in vertical, horizontal, stepped and cavity tray applications high tear and puncture resistant
- Radon resistant DPC



Typical Applications

- Suitable for use as a DPC in domestic and residential construction in vertical, stepped and horizontal applications
- Cavity tray applications

Visqueen Zedex Housing Grade DPC is designed to provide house builders with a robust, higher performing and cost effective alternative to traditional British Standard DPCs. Housing Grade is strong and flexible remaining workable throughout the seasons. It can be used with a wide range of products such as silicon mastics without causing discolouration.

- Suitable for housing constructions up to three storeys
- Outperforms all other housing grade flexible damp proof courses
- Contains no hazardous pitch or PVC plasticizers
- Strong, puncture resistant with excellent workability in winter conditions
- BBA Certificate No.94/3059

System Components

- Visqueen Zedex Jointing Tape
- Visqueen DPC Surface Fixing System Strip/Pins
- Visqueen Preformed Cavity Tray Units
- Visqueen Pro Detailing Strip



Visqueen Specialist Centre:



Damp Protection



Gas Protection



Masonry



Visqueen Specialist Centre:



Damp Protection



Masonry



Visqueen Zedex High Bond DPC is a high performance damp proof course suitable for low compressive load applications and can be bonded and formed into shape, so no preformed units are required. Visqueen Zedex High Bond DPC can be torch bonded to masonry units and all laps are homogenously sealed in the process.

- Manufactured in excess of BS 6398 type A
- Low permeability to methane and radon gas
- Superior performance in low compressive load applications
- Excellent mortar adhesion properties
- Contains no pitch or plasticisers

System Components

- Visqueen DPC Surface Fixing System
- Visqueen High Performance (HP) Tanking Primer
- Visqueen Pro Detailing Strip

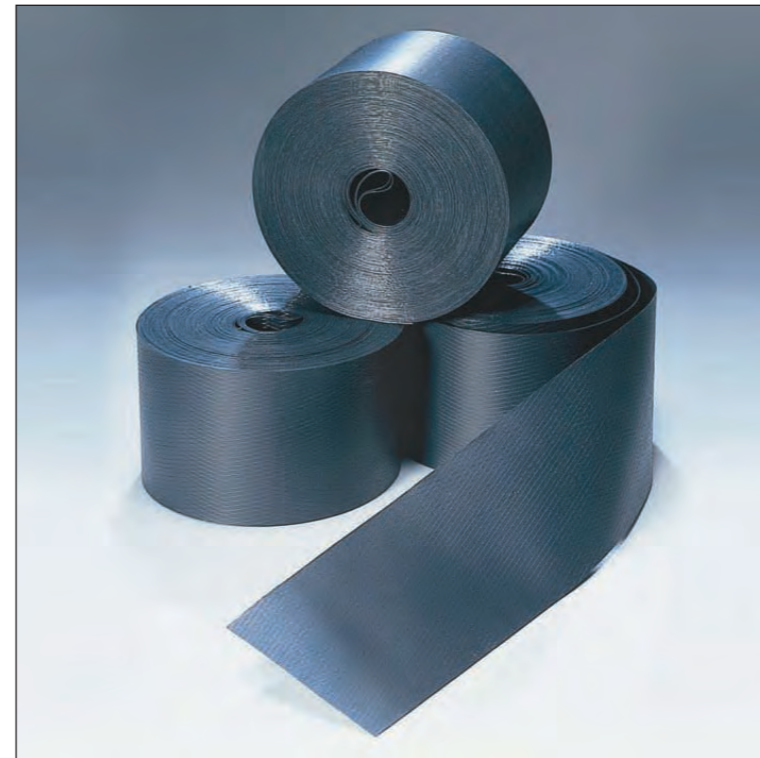


Typical Applications

- Cavity tray applications
- Low compressive load applications
- Parapet walls, cappings and cappings



Visqueen Specialist Centre:



Typical Applications

- Suitable for use in WET bedded vertical and horizontal applications throughout two storey domestic constructions

Visqueen Polyethylene Damp Proof Course (DPC) is designed to prevent the passage of moisture in brick and block work from external sources. Visqueen Polyethylene DPC is manufactured from high quality reprocessed materials to provide a cost effective and durable domestic grade damp proof course.

- Conforms to the requirements of BS 6515
- Cost effective damp proof course for domestic construction
- Suitable for wet bedded applications in low rise developments
- Manufactured from the highest quality recycled materials
- Not suitable for downward passage of water ie. Cavity Tray

System Components

- Visqueen Zedex Jointing Tape
- Visqueen DPC Surface Fixing System Strip/Pins
- Visqueen Preformed Cavity Tray Units
- Visqueen Pro Detailing Strip



Visqueen Specialist Centre:



An integral part of the Visqueen Zedex Damp Proofing System is the range of Visqueen Preformed Cavity Tray Units. The units simplify cavity tray detailing at columns, corners, windposts, change of levels, etc. and so greatly reduce the time required on site to install a cavity tray at these complex junctions.

Visqueen Preformed Cavity Tray Units are factory manufactured from specially formulated, tough, co-polymer material, which is sufficiently flexible to accommodate normal construction tolerances. The units can be produced for any width of cavity and in formats suitable to be either built-in or surface fixed to the inner leaf.

- Manufactured in the UK from specially formulated, flexible co-polymer material
- Designed to simplify the damp proofing of complex cavity tray junctions
- Speeds up cavity tray installation and eliminates leakage paths
- Ensures compliance with industry recommendations and standards
- Built-in and surface fixed units available
- Free on-site service for design of project specific Preformed units



| Preformed Units | Built-in | Surface fixed |
|---------------------------|----------|---------------|
| Lintel stop end | PFU-100 | PFU-100 |
| Stop end | PFU-101 | PFU-102 |
| Jamb | PFU-104 | PFU-104 |
| Change of level | PFU-107 | PFU-108 |
| Internal/ external corner | PFU-109 | PFU-110 |
| Windpost | PFU-125 | PFU-125 |
| Column | PFU-128 | PFU-130 |
| External corner column | PFU-129 | PFU-131 |
| Arched window | PFU-145 | PFU-145 |

Typical Applications

- Visqueen Preformed Cavity Tray Units are generally installed prior to the main run of Visqueen Zedex DPC Cavity Tray. The Visqueen Zedex DPC Cavity Tray should overlap the Preformed Unit by minimum 100mm, the lap being bonded with Visqueen Zedex DPC Jointing Tape.
- When surface fixing, the Preformed Unit (also know as cloaks) should be bonded and then mechanically fixed to the inner leaf using the same taping/fixing system as the Visqueen Zedex DPC Cavity Tray.
- In accordance with industry recommendations and guidance, Visqueen Zedex DPC Joint Support Boards should be positioned beneath unsupported laps in order to provide support for the initial formation of the bonded lap and its long term integrity.



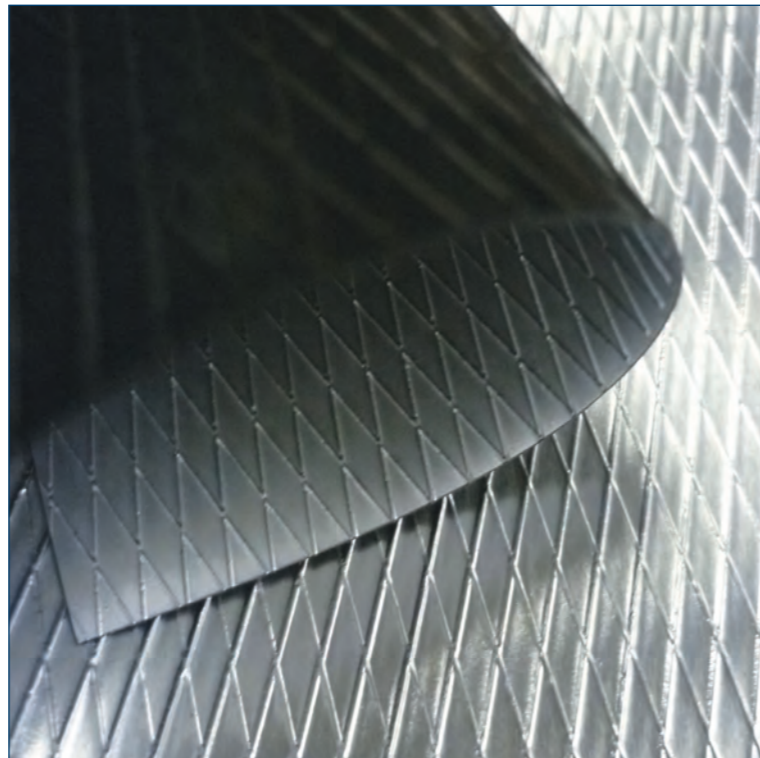
VISQUEEN GR DPC

Visqueen Gas Resistant (GR) Damp Proof Course is a flexible DPC with an aluminium foil designed to prevent the transmission of methane, carbon dioxide, radon and low level hydrocarbon vapours. This is in addition to the product's usage as a damp proof course. Resistance to harmful gases is achieved by an integral aluminium film.

- Aluminium foil to resist methane, CO₂, radon and low levels of hydrocarbon
- Conforms to BS8485:2015
- Use as part of an integral gas protection system
- Independently assessed

System Components

- Visqueen Zedex Jointing Tape
- Visqueen Gas Resistant (GR) Foil Tape
- Visqueen DPC Surface Fixing System Strip/Pins
- Visqueen Preformed Cavity Tray Units
- Visqueen Pro Detailing Strip



Typical Applications

- Use on any site where methane, CO₂, radon or low level hydrocarbon vapours are a problem
- Suitable for vertical, horizontal, stepped and cavity tray applications



Typical Applications

- Can be used on gas contaminated and hydrocarbon contaminated brownfield sites
- Combines high strength with flexibility

VISQUEEN ULTIMATE DAMP PROOF COURSE

Visqueen Ultimate DPC is a blend of ethylene co-polymers suitable for use on brownfield sites that require protection from dangerous contaminants such as hydrocarbons and methane, together with excellent damp proofing properties.

- Suitable for use on hydrocarbon contaminated sites
- High puncture & tear resistance
- Independently tested against harmful gases, chemicals and hydrocarbons
- Proven track record on gas and hydrocarbon contaminated sites

System Components

- Visqueen Zedex Jointing Tape
- Visqueen DPC Surface Fixing System Strip/Pins
- Visqueen Preformed Cavity Tray Units
- Visqueen Pro Detailing Strip



Visqueen Specialist Centre:



Masonry



Gas Protection



Visqueen Specialist Centre:



Masonry



Gas Protection



Product selector

Application

Uncovered external concrete works (footpaths)

Visqueen EcoMembrane

Domestic & Industrial applications (new housing & lightweight units)

Visqueen High Performance DPM

Commercial applications, schools, offices, supermarkets & factories

Visqueen High Performance DPM

Damp Proof Membranes

Loose laid polyethylene Damp Proof Membranes (DPM) to prevent the ingress of damp in buildings.



Visqueen High Performance DPM - BBA Approved - is Visqueen's premium grade Damp Proof Membrane manufactured from prime virgin polymers for use as a Type "A" damp proof membrane as defined by BS EN 13967: 2012.

- Visqueen's premium grade Damp Proof Membrane
- Suitable for use on commercial and domestic applications
- Comprehensively independently tested
- Supplied centre folded to reduce the risk of cracks in screed

System Components

- Visqueen Pro Double Sided Jointing Tape
- Visqueen Pro Single Sided Jointing Tape
- Visqueen TreadGUARD1500
- Visqueen Pro Detailing Strip
- Visqueen Top Hat Units



Typical Applications

- Suitable for use in concrete floors in domestic and commercial (schools, hospitals leisure, shopping centres etc.) applications
- Suitable for use below concrete floor slabs not subject to hydrostatic pressure



Visqueen Specialist Centre:



Typical Applications

- Suitable for use below concrete floor slabs in uncovered external concrete works

Visqueen EcoMembrane® is manufactured from 100% recycled polyethylene suitable for use as a Type "A" damp proof membrane as defined by BS EN 13967: 2012. It is black or blue in colour, available in 250µm, 300µm and 500µm thicknesses and in convenient multi folded rolls.

- Accredited by the British Board of Agrément (BBA: 94/3009)
- Manufactured using 100% recycled polythene
- Visqueen's low cost Eco entry level brand
- Suitable for use below concrete floors in accordance with clause 11 of CP 102:1973

System Components

- Visqueen Pro Double Sided Jointing Tape
- Visqueen Pro Single Sided Jointing Tape
- Visqueen TreadGUARD1500
- Visqueen Pro Detailing Strip
- Visqueen Top Hat Units



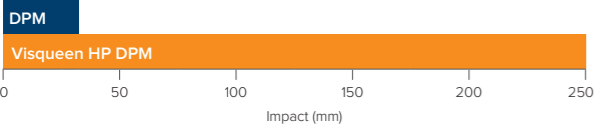
Visqueen Specialist Centre:



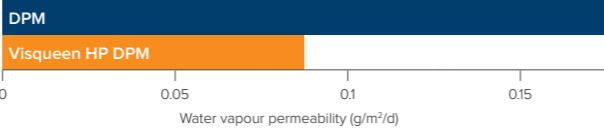
Why use Visqueen High Performance DPM

| Standard DPM | Visqueen HP DPM |
|--|--|
| Made from recycled polythene | Made from tough co-polymer thermoplastic |
| For domestic and light commercial builds | For high rise & commercial heavy duty RC slabs |
| For low foot traffic sites | Resistant to high foot traffic & heavy loads |
| Standard damp proofing protection | Ultimate damp proofing protection |
| Light duty damage resistance | Heavy duty damage resistance |
| Not suitable for hardwood floor constructions | Suitable for hardwood floor constructions |
| Multi folded membrane – value option with multiple folds | Centre folded membrane – less folds reduces the risk of leaks |
| Not suitable for gas protection applications as per BR 211 | Protects against high levels of radon & very low levels of other gases |

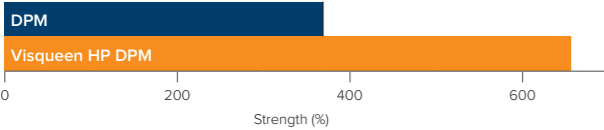
8X greater impact resistance



2X less water vapour permeability
The primary function of a DPM



2X greater elongation strength



Product selector

Application

| | |
|-------------|--|
| Industrial | Visqueen Vapour Check |
| Residential | Visqueen Vapour Barrier Visqueen HP Vapour Barrier Visqueen FB Vapour Barrier |
| Commercial | Visqueen HP Vapour Barrier Visqueen FB Vapour Barrier |
| Roof | Visqueen Vapour Barrier Visqueen HP Vapour Barrier Visqueen FB Vapour Barrier Visqueen Vapour Check |
| Wall | Visqueen Vapour Barrier Visqueen HP Vapour Barrier Visqueen FB Vapour Barrier Visqueen Vapour Check |
| Floor | Visqueen Vapour Barrier Visqueen HP Vapour Barrier Visqueen FB Vapour Barrier |

Visqueen offers a range of high performance Vapour Control Layers which can be used to improve air tightness of buildings, increasing their energy efficiency and reducing the risk of interstitial condensation.

Vapour Control Layers

Vapour Control Layers (VCL) are designed to provide airtight solutions in order to resist the ingress of moisture and condensation in buildings.

These barriers are installed on the inner side of a wall to prevent warm, moist air from penetrating through. If this occurs, the water in the air will condense into and damage the insulation materials, severely reducing the thermal performance of the building and even decaying the timber elements if moisture levels are high enough.

VCL must conform to industry guidance such as BS5250:2011 Code of practice for control of condensation in buildings: and NHBC chapter 6.2.

This can lead to other problems such as the formation of damp and mould which, according to the NHS, can be a respiratory health risk for vulnerable inhabitants and can cause other health issues such as eczema.



Visqueen Vapour Check is used to omit the risk of interstitial condensation within a structure as well as improving the airtightness of the building. Visqueen Vapour Check restricts the passage of warm, moist air from within the building from permeating into the structure or the roof.

- Suitable for low risk applications
- Suitable for preventing condensation in buildings
- Used within wall and roof applications
- Vapour resistance of 266 MNs/g
- Helps to prevent mould and damp staining

System Components

- Visqueen Double Sided Vapour Jointing Tape
- Visqueen Single Sided Vapour Jointing Tape



Typical Applications

- Designed for use in roofs and walls subjected to humidity levels less than 50% at 15°C (BS5250)
- Factories; Warehouses; Industrial Units and Storage Areas



Visqueen Specialist Centre:



Typical Applications

- Designed for use in roofs, walls and floors subjected to humidity levels less than 60% at 20°C (BS5250)
- Domestic Dwellings; Apartment Blocks; Offices and Schools

Visqueen Vapour Barrier is used to omit the risk of interstitial condensation within a structure as well as improving the general airtightness of the building. Visqueen Vapour Barrier restricts the passage of warm, moist air from within the building from permeating into the structure or the roof. It is commonly used within timber frame housing as well as commercial buildings. Visqueen Vapour Barrier is manufactured using virgin polyethylene.

- Range suitable for all internal building conditions
- Used within roof, wall and floor constructions
- Manufactured in the UK
- Vapour resistance of greater than 530 MNs/g
- Supplied in single wound sheeting which reduces the risk of cracks in screed

System Components

- Visqueen Pro Double Sided Vapour Tape
- Visqueen Pro Vapour Tape
- Visqueen Pro Vapour Edge Tape



Visqueen Specialist Centre:

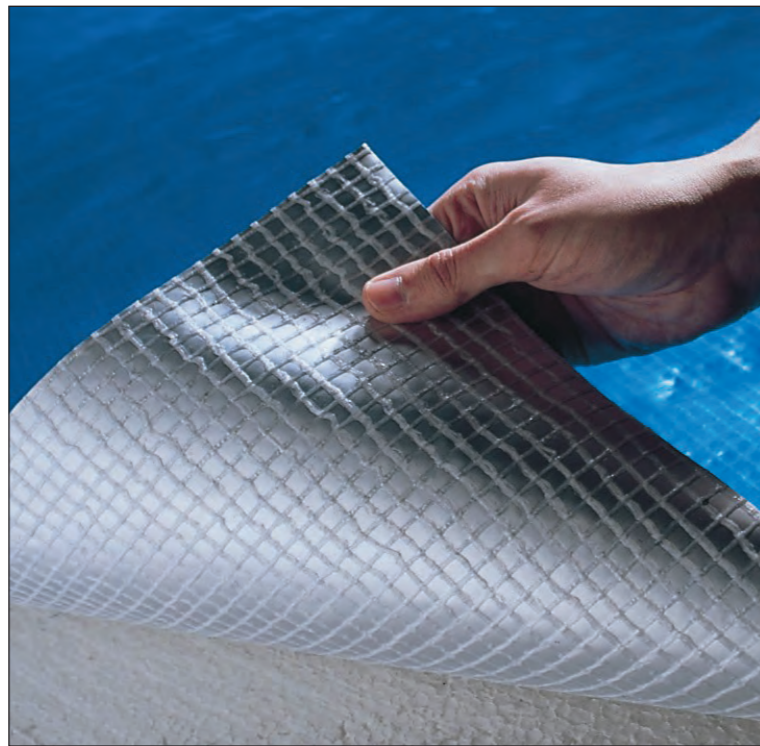


Visqueen High Performance (HP) Vapour Barrier is used to omit the risk of interstitial condensation within a structure as well as improving the general airtightness of the building. Visqueen HP Vapour Barrier restricts the passage of warm, moist air from within the building from permeating into the structure or the roof. It is commonly used within timber frame housing as well as commercial buildings. Visqueen HP Vapour Barrier is a high quality multi layer reinforced LDPE membrane with an aluminium core.

- Range suitable for all internal building conditions
- Used within roof, wall and floor constructions
- Reduces the likelihood of interstitial condensation
- Vapour resistance of >1100 MNs/g

System Components

- Visqueen Pro Double Sided Vapour Tape
- Visqueen Pro Vapour Tape
- Visqueen Pro Vapour Edge Tape



Typical Applications

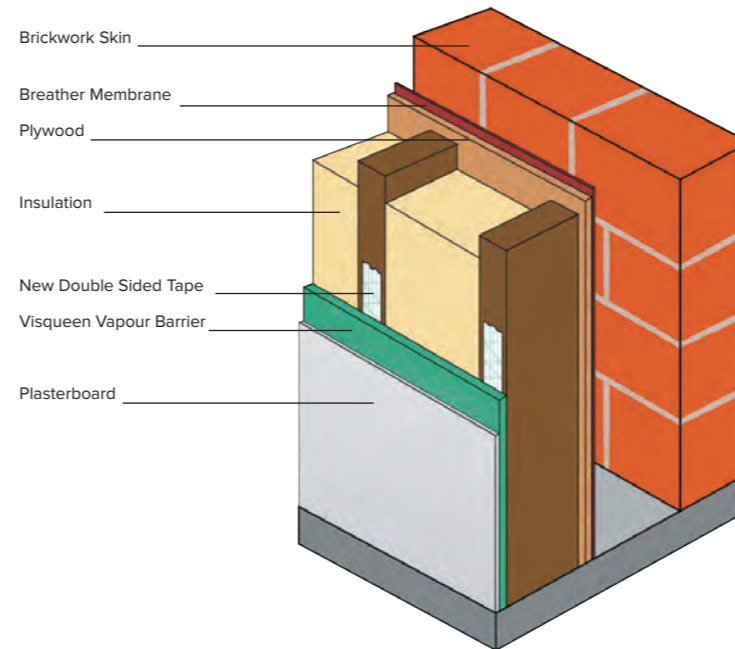
- Designed for use in roofs, walls and floors subjected to humidity levels more than 45% at 25°C (BS5250)
- Textile Factories; Paper Mills; Swimming Pools; Laundries; Communal Shower Blocks; Canteens; Sports Halls and Wet Industrial Processes



Visqueen Specialist Centre:



Timber framed wall with brick cladding



Typical Applications

- Textile Factories; Paper Mills; Swimming Pools; Laundries; Communal Shower Blocks; Canteens; Sports Halls and Wet Industrial Processes

Visqueen Fully Bonded (FB) Vapour Barrier is used to omit the risk of interstitial condensation within a structure as well as improving the general airtightness of the building. Visqueen FB Vapour Barrier restricts the passage of warm, moist air from within the building from permeating into the structure or the roof. It is commonly used within timber frame housing as well as commercial buildings.

- Reduces the likelihood of interstitial condensation
- Vapour resistance of 2000 MNs/g
- Self Adhesive Membrane
- Supplied in single wound sheeting which reduces the risk of cracks in screed

System Components

- Visqueen High Performance (HP) Tanking Primer



Visqueen Specialist Centre:



Contents

Page

| | |
|-------------------------------------|-----------|
| Gas Protection | 39 |
| Gas Proof Membranes | 41 |
| Gas Barrier | 42 |
| Low Permeability Gas Membrane | 43 |
| Radon Membrane | 44 |
| Gas Venting System | 45 |
| Radon Sump | 46 |
| Ultimate Gas Membranes | 49 |
| Ultimate RadonBlok 600 | 50 |
| Ultimate GeoSeal | 52 |
| Ultimate VOC BLOK | 53 |
| Ultimate HC BLOK | 54 |
| Brownfield Land | 55 |





Gas Protection

Ground gas protection, we've got it covered

A greater awareness of the risks associated with Volatile Organic Compounds and ground gases have led to an increasing number of construction projects requiring the use of a suitable protection system to safeguard both the development and its occupants.

Visqueen is recognised as the UK's leading authority on ground gas protection. We offer complete technical support at every stage of the specification and supply chain process backed up by industry leading products.

Our technical services include site investigation, system design, specification and project specific recommendations utilising the latest guidance and in full compliance with current legislation and standards.



Product selector

Application

| | |
|------------------------------|--|
| Radon | Visqueen Gas Barrier Visqueen Low Permeability Gas Membrane Visqueen Radon Membrane Visqueen Ultimate RadonBlok 600 |
| Carbon Dioxide | Visqueen Gas Barrier Visqueen Low Permeability Gas Membrane |
| Methane | Visqueen Gas Barrier |
| Gas Venting (passive system) | Visqueen Gas Venting System |

Gas proof membranes for the protection of buildings from harmful ground gases such as radon, carbon dioxide and methane. Visqueen has produced a new Ultimate Gas range to ease specification issues when responding to various and complex design challenges on gas contaminated land - find out more on page 48.

A Visqueen guide to Ground Gas Protection

Visqueen's Gas Membranes and Venting Systems allow construction to build on contaminated land such as disused petrol stations and post industrial sites. This ensures reclamation of land and eases political pressure of building on green fields.

Hydrocarbons

Hydrocarbons can be highly toxic and are derivative of the petrol chemical industry. Hydrocarbons are prevalent in areas such as disused petrol stations and post industrial sites, most hydrocarbons are carcinogenic.

Methane

An odourless flammable gas that is explosive when released to the atmosphere at levels as low as 5% and exposed to a source of ignition.

Methane is formed wherever there is belowground degradation of organic substances e.g. landfill sites, sewage treatment areas, mining localities and peat bogs.

Carbon dioxide

Carbon Dioxide is a colourless gas that in high concentrations can result in asphyxiation. The gas is formed by the oxidation of carbon compounds such as in landfill sites. When carbon dioxide levels reach concentrations of 3%, symptoms of headaches and shortness of breath will occur, becoming severe at 5%, with loss of consciousness at 10%. It's fatal at 22%.

Radon

Radon is a gas that is odourless and colourless. It is formed where uranium and radium are present. It migrates into any building that is built over the source. If it accumulates in a building at unacceptably high concentrations it will increase the risk of lung cancer.

Volatile Organic Compounds

Compounds that are volatile under 'normal' environmental/ atmospheric conditions. They may be found in solid, liquid and dissolved phase form as well as in gaseous - vapour - phase (e.g. benzene, elemental mercury).

Gas Proof Membranes

Gas Proof Membranes for the protection of buildings from harmful ground gases such as radon, carbon dioxide and methane.





Visqueen Gas Barrier offers a safe solution for the protection of commercial and industrial buildings against methane, radon and carbon dioxide, when installed in accordance with the relevant codes of practice. Visqueen Gas Barrier is a multi-layer reinforced polyethylene membrane with an integral aluminium foil that is approved for use in NHBC Amber 2 applications.

- BBA approved, fully complies with BS8485:2015
- Low permeability to methane, radon and carbon dioxide
- Approved for use in NHBC Amber 2 applications
- Multi-layer reinforced LDPE membrane with aluminium core
- High puncture and tear resistance

System Components

- Visqueen Double Sided Jointing Tape
- Visqueen Gas Resistant (GR) Foil Tape
- Visqueen Top Hat Units
- Visqueen TreadGUARD1500
- Visqueen Pro Detailing Strip

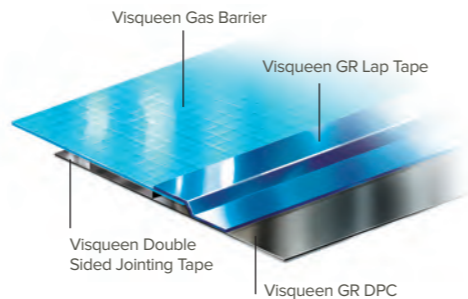


Visqueen Specialist Centre:

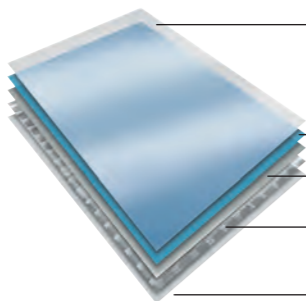


IMPORTANT - Visqueen Gas Barrier must be installed blue side up.

Jointing Detail



Multi-Layer Protection



LDPE
Tough polyethylene outer layer provides absolute protection against moisture ingress.

Visqueen Blue LDPE
Aluminium Foil
Central shield layer of aluminium provides impenetrable gas-reflecting properties.

Split Yarn HDPE
Adhesive split yarn woven matrix provides 3-D tear resistance.

LDPE
Protective polyethylene outer layer confers additional tensile and tear strength properties.

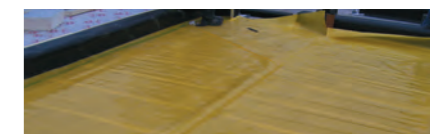
Typical Applications

- Methane, radon, stythe (a gas commonly found from disused mines, also known as blackdamp), and carbon dioxide



Typical Applications

- Radon NHBC amber 1 site conditions



Visqueen Low Permeability Gas Membrane is a robust co-polymer thermoplastic membrane approved for use in NHBC Amber 1 and radon applications. For ease of identification on site the membrane is coloured yellow.

- Approved for use in NHBC Amber 1
- High quality robust co-polymer thermoplastic membrane
- Supplied in centre folded sheeting which reduces the risk of cracks in screed
- A high performance radon membrane
- BBA Certificate 13/5069

System Components

- Visqueen Double Sided Jointing Tape
- Visqueen Gas Resistant (GR) Foil Tape
- Visqueen Top Hat Units
- Visqueen TreadGUARD1500
- Visqueen Pro Detailing Strip



Visqueen Specialist Centre:



VISQUEEN RADON MEMBRANE

Visqueen Radon Membrane is manufactured from an enhanced blend of polymer films that is suitable for use in the protection of buildings from the ingress of radon gas. Visqueen Radon Membrane also acts as a damp proof membrane, but is not intended for use where there is the risk of hydrostatic pressure. It is approved for use in Ireland. Visqueen Radon Membrane can be used in most common floor constructions. It is installed in a similar way to a damp proof membrane, but with much greater attention paid to workmanship and detailing in order to achieve effective sealing at all locations.

- Independently tested for radon resistance
- BBA Certified
- Also acts as a Damp Proof Membrane
- Complies with BR 211: 2015

System Components

- Visqueen Double Sided Jointing Tape
- Visqueen Pro Single Sided Tape
- Visqueen Top Hat Units
- Visqueen TreadGUARD1500
- Visqueen Pro Detailing Strip
- Visqueen Radon Sump



Typical Applications

- Offers a safe solution from radon gas



Specification

To determine what system is required we require the site investigation report, foundation layout and perimeter sections for the purpose of development. If venting is required, in accordance with the guidance provided within BS8485: 2015, Visqueen Technical Support Team will specify the most cost effective solution. Visqueen Gas Vent Mats can be laid in various methods:

- Blanket Coverage: Covers the entire floor area usually on more heavily gassing sites
- Percentage Coverage: Laid in strips to cover specific % area of the building's footprint
- Bespoke: Laid in strips at predetermined centres

VISQUEEN GAS VENTING SYSTEM



Current UK construction practice adopts the concept of multiple gas protection measures to form a gas control system. Typically, protection measures increase in number and robustness as the potential risk increases. The gas protection solution is based on a point scoring system in accordance with BS8485:2015. Visqueen has developed a comprehensive passive venting solution to facilitate the dilution and dispersal of dangerous gases. Used extensively across the UK. The system comprises:

- Visqueen Gas Vent Mat
- Visqueen Gas Flow Fittings
- Visqueen Pro Gas Vent Box
- Visqueen Gas Venting Bollard



Visqueen Specialist Centre:



Visqueen Specialist Centre:



VISQUEEN RADON SUMP

Where sub floor depressurisation is required, then a Visqueen Radon Sump should be used. In the UK this is usually a requirement in Full Protection areas.

- Strong & Robust
- Easy to Install
- Part of the Visqueen Radon Protection System

Specification

Visqueen Radon Sump is a prefabricated plastic unit designed to act as a collection point for radon gas prior to it being ventilated away when connected to an extract fan.

Sumps For Use With Full Protection

Where subfloor depressurisation is required, a Visqueen Radon Sump should be used.

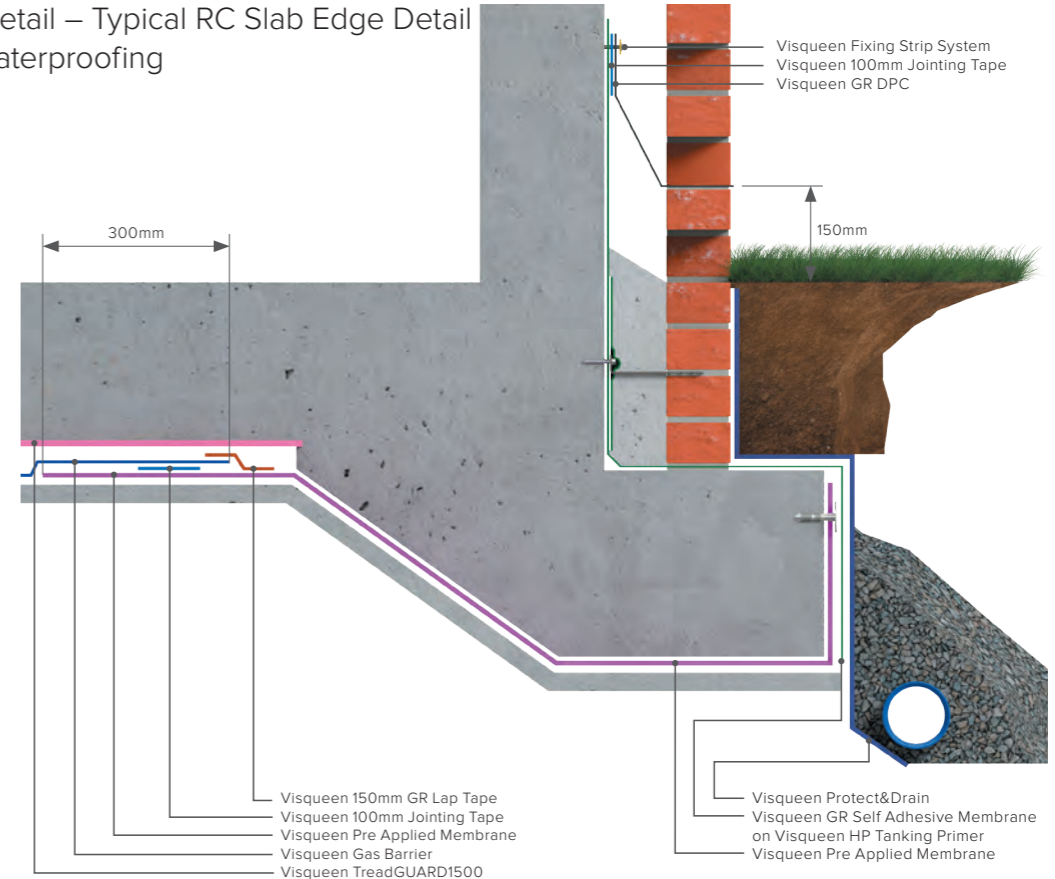
This is a prefabricated plastic sump, to which pipework is connected, with the joints fully sealed using the Visqueen Radon Membrane Jointing System. A venting pipe should be connected to the sump, pass through the external wall and brought out above ground level about 100mm from the face of the external wall. The pipe is then capped until such time as a fan is installed.



Important

A sump is only installed as a fallback measure and does not provide any radon removal until a fan is installed or, if the sump is located centrally, the pipe is connected to a passive stack system. Typically sumps are installed at one unit per dwelling or every 15m radius.

Standard Detail – Typical RC Slab Edge Detail Gas and Waterproofing



Visqueen Specialist Centre:



Product selector

Application

Radon, Carbon Dioxide and Methane

Visqueen Ultimate GeoSeal
Visqueen Ultimate VOC BLOK
Visqueen Ultimate HC BLOK
Visqueen Ultimate RadonBlok 600

VOC and Hydrocarbon Vapour

Visqueen Ultimate GeoSeal
Visqueen Ultimate VOC BLOK
Visqueen Ultimate HC BLOK

VOC and Hydrocarbon Immersions

Visqueen Ultimate GeoSeal
Visqueen Ultimate VOC BLOK
Visqueen Ultimate HC BLOK

Visqueen's NEW Ultimate range offers an unrivalled choice for protection against dangerous gases and chemicals in compliance with the latest regulations and standards. The NEW range utilises Visqueen's advanced barrier technology and to aid specification we have created a product selector above.

- An advanced gas barrier structure
- Superior physical and chemical resistant properties
- Easy & rapid welding
- Flexibility for uneven ground contours
- Good environmental stress crack resistance

Advanced barrier technology utilises Visqueen's extensive manufacturing technical expertise and experience to ensure buildings and occupants are safe from hazardous ground gases and VOCs.



Ultimate Gas Membranes

Visqueen's NEW Ultimate range is manufactured using advanced membrane technology and drawing on our extensive knowledge and expertise in gas protection.

The only range that is fully compliant to BS8485:2015 and CIRIA C748 - Guidance on the use of plastic membranes as VOC vapour barriers.

BS8485:2015 - Code of practice for the design of protective measures for methane and carbon dioxide grounds gases for new buildings.





Save money on your next project...
Use Visqueen

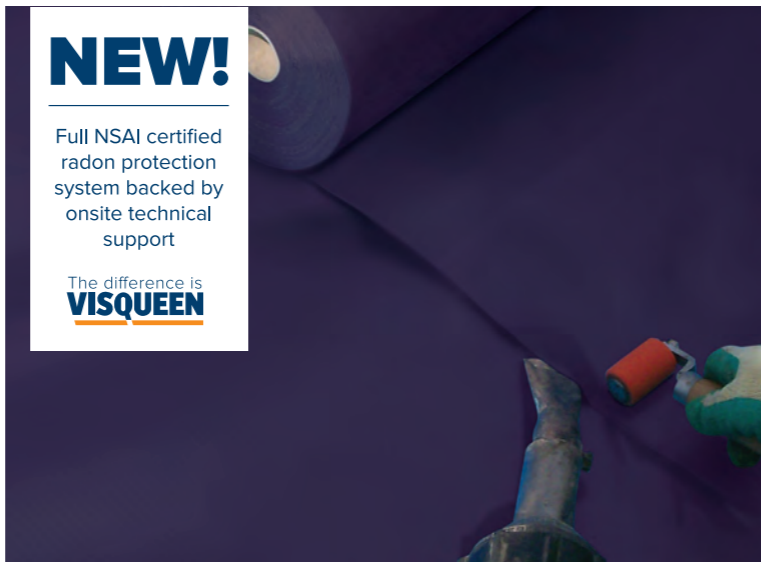
The new Visqueen Ultimate RadonBlok 600 barrier draws on Visqueen's extensive knowledge and expertise in gas protection to help protect Irish homes and businesses from the serious health risks posed by radon. With full technical support from the Visqueen team throughout every step of your project you can be assured you are in safe hands. Enjoy savings on your next development with cost effective, best practice design solutions to the latest regulations and standards.

Long-term radon gas exposure is the leading cause of cancer in non-smokers and can accumulate to dangerous levels in buildings.

NEW!

Full NSAI certified radon protection system backed by onsite technical support

The difference is
VISQUEEN



Manufactured design for welding

Speeding up installation with no need for tapes or unwanted mess



Next generation of reinforcement

Twice the impact strength of typical reinforced barriers due to its unique polymer blend



Advanced technology

An extensive R&D approach has produced a barrier to meet the strict regulations



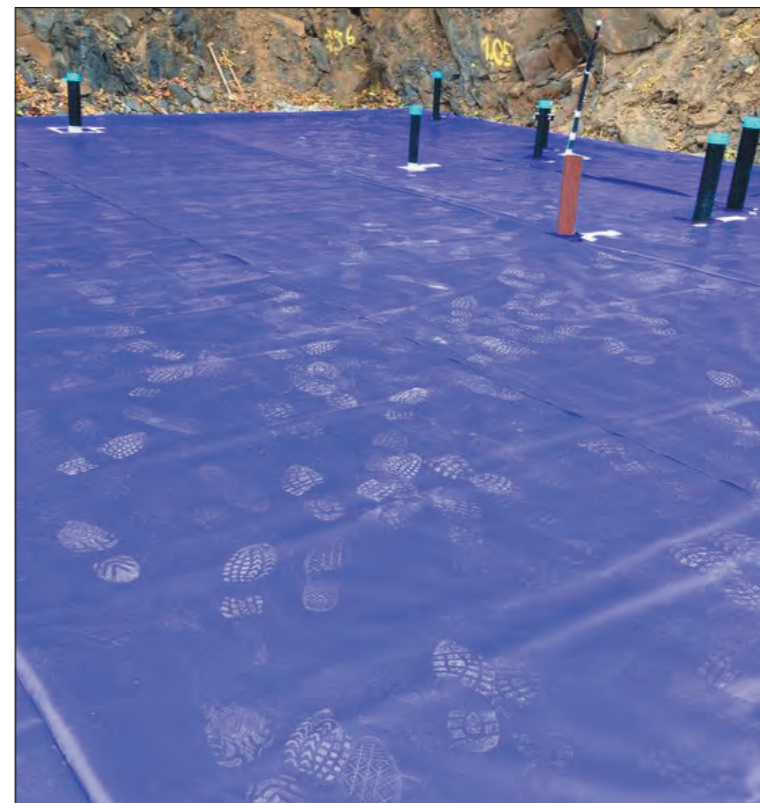
Flexible at low temperatures

Prevents cracking and eases installation even in sub-zero temperatures



Fully certified by NSAI

Suitable for use in high risk areas of radon gas Ingress and certified by the NSAI



Typical Applications

- Radon contaminated areas in accordance with IAB certificate no. 05/0214
- Resistance to moisture in accordance with Technical Guidance Document C
- Above or below concrete floors in accordance with Visqueen design specification



Visqueen Ultimate RadonBlok 600 is a unique high performance co-polymer thermoplastic radon barrier which exhibits excellent welding characteristics.

Manufactured using Visqueen's advanced membrane technology and drawing on our extensive knowledge and expertise in gas protection, Visqueen has developed a new flexible barrier membrane that works in extreme conditions. The system provides complete protection from sealing floors to walls, and complex detailing such as service pipe penetrations and corners.

- Irish Agrément Board Certificate No.05/0214 - Radon Barrier System
- CE Mark EN13967 - Flexible sheets for waterproofing. Plastic and rubber damp proof sheets including plastic and rubber basement tanking sheet. Definitions and characteristics

System Components

- Visqueen Ultimate RadonBlok welded system
- Visqueen TreadGuard.



Visqueen Specialist Centre:



Visqueen Ultimate GeoSeal is a flexible pre-applied membrane designed to comply with current guidance on waterproofing, Volatile Organic Compounds (VOCs) and ground gases. The product is textured on one side to aid adhesion to concrete and available in a large roll format to minimise jointing and quick installation times. The membrane is grey and black and in single wound roll format. The membrane should be installed grey side up.

- Conforms in full to BS8102:2009, CIRIA C748 and BS8485:2015
- Unique pre-applied and gas resistant membrane
- Excellent VOC & methane barrier resistance
- Exceptional puncture resistance - No protection required

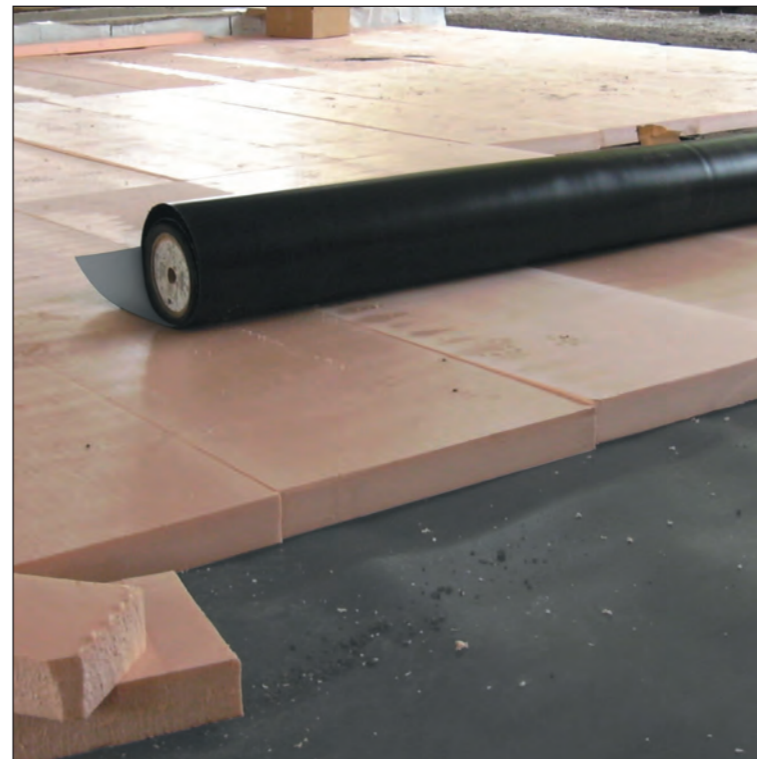
System Components

- Visqueen Ultimate Double Sided Bonding Tape
- Visqueen Ultimate Lap Tape
- Visqueen Ultimate Retaining Disk



Typical Applications

- Waterproofing applications to BS8102:2009 type A
- Slab edges and permanent shutter work
- Tanking below ground structure e.g. lift pits
- VOC/Hydrocarbon contaminated sites in accordance with CIRIA C748
- Carbon dioxide and methane sites in accordance with BS8485:2015



Typical Applications

- VOC/Hydrocarbon contaminated sites in accordance with CIRIA C748
- Carbon dioxide and methane sites in accordance with BS8485:2015
- Radon affected sites in accordance with BRE211:2015
- Damp protection in accordance with Building Regulations part C

Visqueen Ultimate VOC BLOK is a flexible membrane designed to comply with current guidance on Volatile Organic Compounds (VOCs) and ground gases. The product is available in large roll formats to minimise jointing and quick installation times. The membrane is grey and black in single wound roll format. The membrane should be installed grey side up.

- Conforms in full to CIRIA C748 and BS8485:2015
- Excellent VOC and methane barrier resistance
- NO protection required
- Flexible even at low temperatures – limits stress cracking

System Components

- Visqueen Ultimate Double Sided Bonding Tape
- Visqueen Ultimate Lap Tape
- Visqueen Ultimate Top Hat Units
- Visqueen Pro Detailing strip



Visqueen Specialist Centre:



Gas Protection



Structural Waterproofing



Visqueen Specialist Centre:



Gas Protection



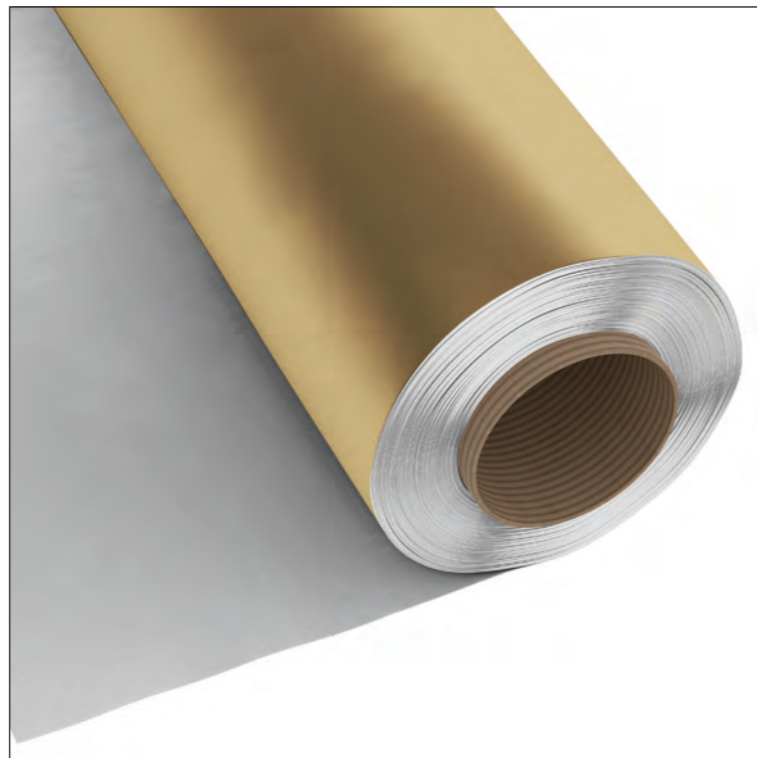


Visqueen Ultimate HC BLOK is a highly flexible 0.5mm thick coextruded membrane designed to comply with current guidance on Volatile Organic Compounds (VOCs) vapours and ground gases. The product is available in large roll formats to minimise jointing and quick installation times. Single wound roll format and packaged in a white outer wrap. The membrane should be installed gold side up.

- Conforms to CIRIA C748 and BS8485:2015
- Excellent VOC (vapour) and methane barrier resistance
- Exceptional flexibility and puncture resistance
- Outstanding welding characteristics, saving time and costs

System Components

- Visqueen Ultimate Double Sided Bonding Tape
- Visqueen Ultimate Lap Tape
- Visqueen Ultimate Top Hat Units
- Visqueen Pro Detailing strip



Typical Applications

- VOC/Hydrocarbon (gaseous phase) contaminated sites in accordance with CIRIA C748
- Carbon dioxide and methane sites in accordance with BS8485:2015
- Radon affected sites in accordance with BRE211:2015
- Damp protection in accordance with Building Regulations part C



Visqueen Specialist Centre:



Brownfield Land

Background – the dangers

The most widely known UK tragedies where ground gas produced explosive or asphyxiating conditions occurred at Loscoe in Derbyshire (1986)¹, Abbeystead in Lancashire (1984)² and most recently in Gorebridge near Edinburgh (2012)³. The £8m Gorebridge housing site was mothballed after occupants complained of dizziness and sickness which was directly attributed to ground gases not effectively managed. Publicity surrounding these incidents heightened regulatory and public expectations for managing ground gas.

What is brownfield land?

Britain's great industrial past has left its mark with many land areas having been contaminated with hazardous waste or pollution. From coalfields, abandoned industrial factories to closed petrol stations; they leave historic contaminants such as hydrocarbon spillages, solvents and ground gases (methane and carbon dioxide). Brownfield is a term used for building on contaminated land previously used for industrial uses.

References

1. landfill-gas.com/1980s-landfill-gas-explosions.html
2. www.hse.gov.uk/comah/sragtech/caseabbeystead84.htm
3. www.bbc.co.uk/news/uk-scotland-edinburgh-east-fife-27905611
4. www.gov.uk/government/uploads/system/uploads/attachment_data/file/398745/Brownfield_Consultation_Paper.pdf

Government brownfield policies

For the past 20 years governments have repeatedly committed developing land affected by contamination (for both housing and other developments). This commitment continues today as the current government encourage redevelopment on brownfield sites⁴ to manage population growth and a housing shortage. This strategy also decreases the pressure to build on Britain's precious green open spaces. Building on brownfield land is a fundamental element in the delivery of sustainable development.

Building on contaminated land – A guidance history

Prior to 2007 most guidance for building on contaminated land took little account of risk and what was the best way to prevent/manage risks. There was much disagreement between consultants, regulators and construction industry as to the "best way" to assess risks from ground gases. Since 2007 the industry has come together and published guidance, codes of practices and regulations surrounding the design, build and protective measures on contaminated land. These guidelines have evolved to cover a complex area of design and prevention against various chemicals and gases emanating from the ground.



ContentsPage

Structural Waterproofing57

Liquid Membranes.....59

About Liquid Membranes60

AXIOM UniSeal62

AXIOM Shield LAC63

AXIOM Guard system64

AXIOM Guard H+65

AXIOM Guard V+65

AXIOM Guard Primer66

AXIOM CreteSeal67

Liquid Gas Membrane68

High Performance Tanking Primer69

Tanking Membranes71

Self Adhesive Membrane72

Gas Resistant Self Adhesive Membrane ...73

TorchOn Tanking Membrane74

Pre Applied Membrane75

Stormwater Protection.....77

Urban Drainage Geomembrane78

High Performance UDG79

Visqueen Ultimate UDG80

Cavity Drain System83

V20 Cavity Drain Membrane84

V8 Cavity Drain Membrane85

Anti-lime Coating86

Cavity Drain Membrane Systems87

TPS & Megafilm 91

ECO TPS92

Clear TPS93

LPS1207 Flame Retardant Sheetting94





“Our Visqueen Waterproof Design Specialist has been vital to the success of our development, the knowledge and on-site support has been key in aiding our team along a minefield of regulations and codes of practice”

Luke Fowles – Bouygues

Structural Waterproofing

Full product solutions for complete building protection

Our systems have waterproofed every type of building and structure from commercial buildings to the homes that we live and grow in.

Visqueen Structural Waterproofing takes care of your waterproofing strategy from start to finish, including technical advice and guidance, preparation of sectional details, approval of drawings, site inspections and on-going site support.

Our revolutionary Axiom structural waterproofing range provides high performance protection and containment solutions for applications including the sustainable regeneration of brownfield and contaminated land, gas control systems, tanking, and water containment for dry sites, or major water features.



Product selector

Application

| | |
|-----------------------------|--|
| Damp proofing | Visqueen AXIOM Shield LAC |
| Waterproofing | Visqueen AXIOM Guard V+ (vertical only) Visqueen AXIOM Guard H+ (horizontal only) Visqueen AXIOM UniSeal |
| Basement and retaining wall | Visqueen AXIOM Guard V+ (except blockwork) Visqueen AXIOM UniSeal |
| UV stabilised | Visqueen AXIOM Guard V+ Visqueen AXIOM Guard H+ |
| Masonry walls | Visqueen AXIOM UniSeal |
| Floor/wall fillet | Visqueen AXIOM UniSeal |
| Penetration and detailing | Visqueen AXIOM UniSeal |
| Concrete expansion joints | Visqueen AXIOM CreteSeal |

The new AXIOM Liquid products complement the Visqueen high performance waterproofing range and are compatible with our self-adhesive, torchon and pre-applied membranes giving the customer an unparalleled choice for all waterproofing applications.

Liquid Membranes

Visqueen's high performance liquid membranes range offer unparalleled choice for all waterproofing applications.



About Visqueen AXIOM Liquid Membranes

The issue of ensuring complete waterproofing protection in complex construction details has long been a challenge on most building sites. To offer a solution, Visqueen undertook a comprehensive product development programme, which has resulted in the Visqueen AXIOM Liquid Membranes waterproofing range - which is easy to apply and gives superior performance over other solutions.

The newest range to be added to the Visqueen portfolio meets all the criteria outlined in the BS8102 - the code of practice for below ground waterproofing, Structural warranty providers such as NHBC and LABC have produced their own guidance to ensure that designs meet all the relevant technical and statutory requirements and importantly they are undertaken by suitably qualified persons. NHBC's latest version of Chapter 5.4 outlines these.

Visqueen underwent a major research and development programme to ensure compliance with the latest changes in industry regulations as well as creating market leading products to safeguard the integrity of the client's build in extreme conditions and difficult applications.

Visqueen's market leading range of liquid membranes provides solutions to various complicated below ground waterproofing applications whilst ensuring surface or complex detailing such as irregular profiles and penetrations are fully sealed and waterproof.

The new AXIOM range from Visqueen offers unique attributes and waterproofs porous surfaces such as blockwork in one coat making it the logical choice in liquid membranes.

The independent BDA Agrément process, recognised by architects, specifiers and engineers is designed to confirm a product's fitness for purpose in the construction market and uses rigorous third-party testing to test durability and compliance.



Visqueen AXIOM UniSeal is a two part system: the first component a bitumen-extended polyurethane fluid with a secondary part an accelerator hardener. This unique system cures rapidly to give a continuous tough rubber-like, fully bonded waterproofing coating for various applications.

- New liquid technology giving superior performance
- Perfect for detailing irregular profiles and penetrations
- Creates a fillet in just one pass – NO Complicated build-ups
- Fast curing, elastic & flexible at extreme temperatures
- Compliments Visqueen's self-adhesive waterproofing membranes
- Formulated for masonry applications including blockwork
- BDA approved BAB 18-077/02/A
- NHBC 5.4 compliant



Typical Applications

- Fillet and reinforcement material at inside corners
- Detailing irregular profiles and pipe penetrations such as steel stanchions
- Waterproofing blockwork externally and internally
- Sealing steel reinforcements
- Sealing materials at terminations

Expert technical service: 0333 202 6800 or visit www.visqueen.com



Visqueen Specialist Centre:



Typical Applications

- Specially formulated for damp and waterproofing ground floors and behind cladding applications
- May also be applied to the internal face of external walls above ground level to prevent the penetration of moisture

Visqueen AXIOM Shield LAC is an easy to use, high performance cold applied liquid membrane which rapidly dries to form a damp proof membrane. The product is manufactured using a formulated grade specific to the application which allows faster drying times, easier application and superior performance.

- New liquid technology giving superior performance
- High performance DPM
- Quick & easy to apply; fast installation
- Excellent coverage rates
- BAB-18-029-P-A-UK approved
- NHBC 5.4 compliant



Visqueen Specialist Centre:



Visqueen AXIOM Guard System

Visqueen AXIOM Guard system is a unique single component polyurethane liquid membrane incorporating an accelerator that upon contact with humidity cures rapidly to give a continuous fully bonded waterproofing coating. Surface coverage is approximately 1.5kg/m² therefore. The product is available in 15 kilo (1 tin covers 10m²)

- New liquid technology which gives superior performance
- No complicated pre-mixing
- Formulated grade for below ground applications
- Excellent weather and UV resistance
- Fast curing, elastic and flexible at extreme temperatures
- BAB-18-028-P-A-UK approved
- NHBC 5.4 compliant

AXIOM Guard System comprises of:
 AXIOM Guard H+ for Horizontal Applications
 AXIOM Guard V+ for Vertical Applications
 AXIOM Primer for priming and sealing surfaces (see page 66)
 AZIOM V+ is a two colour system (1 coat each of white as primary layer and grey as secondary layer)



Typical Applications

- Offers a safe solution for the protection of buildings and occupiers against, damp radon and on NHBC amber 1 site conditions
- External Tanking, basements, substructures
- Retaining walls
- Superstructures
- For Concrete, Brickwork, Timber or Steel



Typical Applications

- Offers a safe solution for the protection of buildings and occupiers against, damp radon and on NHBC amber 1 site conditions
- External Tanking, basements, substructures
- Retaining walls
- Superstructures
- For Concrete, Brickwork, Timber or Steel



Visqueen AXIOM Guard H+ for horizontal surfaces. Visqueen recommends 1 coat in this application with a 15 kilo tin covering coverage of 10m². Use with Visqueen AXIOM Guard Primer.



Visqueen AXIOM Guard V+ specially formulated for vertical surfaces. Visqueen recommend 2 coats in this application therefore to aid installation we offer 2 colours – white (1st coat) and grey (2nd coat).

The use of a two colour system allows the easy identification of any areas that have been missed with the second coat. Use with Visqueen AXIOM Guard Primer.



Visqueen Specialist Centre:



Visqueen Specialist Centre:



VISQUEEN AXIOM GUARD PRIMER

Visqueen AXIOM Guard Primer is a one component, polyurethane based primer suitable for all substrates. The highly penetrative formulation seals and primes surfaces prior to the use of Visqueen AXIOM Guard liquid waterproofing system. It is characterised by its very low viscosity and balanced curing speed which result in excellent wetting, impregnation and paint-over time on all substrates, whether of high, low or no porosity (e.g. glass and metals).

- Highly penetrative formulation
- Same-day primer
- Quick & easy to apply
- Part of the Visqueen AXIOM Guard liquid waterproofing system
- BDA certified in conjunction with the main liquid membrane



Typical Applications

- Brick
- Metal
- Wood
- In blockwork applications Visqueen recommend Visqueen AXIOM UniSEAL as one part waterproofing solution.

Expert technical service: 0333 202 6800 or visit www.visqueen.com



VISQUEEN AXIOM CRETESEAL

Visqueen Axiom CreteSeal is a low modulus structural concrete expansion joint sealant. The formulation contains both PU and silylated-PU technology resulting in a sealant which includes the best of both technologies and is easy to apply even at temperatures. It has been modified in order to give enhanced thixotropic properties.

CreteSeal cures by reaction with atmospheric humidity to produce a joint sealant with a 50% joint movement accommodation factor. Additionally, the CreteSeal has been modified in order to have extrusion profile identical to hybrid PU or MS technology. The extrusion rate and tooling of the sealant remain the same throughout a very wide range of temperature and humidity conditions

- A high performance structural concrete expansion joint sealant
- A unique one component polyurethane & silylated PU technology
- Easy to apply even at low temperatures.
- Accommodates up to 50% joint movement
- Remains elastic <math><0^{\circ}\text{C}</math>

Visqueen Specialist Centre:



Structural
Waterproofing



Visqueen Product Guide 2018 | 67



Visqueen Specialist Centre:



Gas
Protection



Structural
Waterproofing

VISQUEEN LIQUID GAS MEMBRANE

Visqueen Liquid Gas Membrane is a grey, one part elastomeric polymer modified liquid that dries to form a black, flexible membrane. The product is supplied in a 20L container. Visqueen Liquid Gas Membrane is used for providing damp proofing, gas proofing or waterproofing for a range of applications.

- Low permeability to methane, carbon dioxide and radon gases
- Quick installation times due to rapid drying properties
- Waterproofing membrane for below ground applications
- Vertical and horizontal damp proof membrane
- Non toxic water based liquid

System Components

- Visqueen Liquid Gas Membrane Reinforcing Strip
- Visqueen Ultimate Liquid Gas Membrane Primer 5 Ltr



Typical Applications

- Gas and damp proofing of junctions with steel stanchions
- Complex gas and damp proofing of detailing applications



VISQUEEN HP TANKING PRIMER

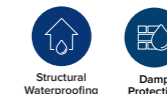


Visqueen High Performance (HP) Tanking Primer is a black, elastomeric bituminous priming solution designed to prepare surfaces prior to the application of Visqueen self adhesive and torch applied damp proof and tanking membranes.

Visqueen HP Tanking Primer is designed to perform in cold weather conditions and is effective in sub-zero temperatures as low as -4°C. This product is manufactured in the UK and is supplied in 5L tins.

- Gives superior bond on torch applied and self adhesive membranes
- Ideal for application in low temperatures (down to -4°C)
- Suitable for green concrete and damp surfaces
- Quick and easy to apply

Visqueen Specialist Centre:



Visqueen Specialist Centre:



Gas Protection



Structural Waterproofing

Product selector

Application

Above and below ground

Visqueen Self Adhesive Membrane (SAM)
Visqueen Gas Resistant (GR) SAM
Visqueen TorchOn Tanking Membrane
Visqueen Pre Applied Membrane (PAM)

Cold weather and high levels
of hydrostatic pressure

Visqueen TorchOn Tanking Membrane

Radon

Visqueen GR SAM
Visqueen TorchOn Tanking Membrane

Carbon Dioxide

Visqueen GR SAM
Visqueen TorchOn Tanking Membrane

Methane

Visqueen GR SAM
Visqueen TorchOn Tanking Membrane

Visqueen Tanking Membranes can be used as a tanking or damp proof membrane for both horizontal and vertical applications above or below ground level.

Tanking Membranes

Visqueen Tanking Membranes offer robust, high performance, superior adhesion and waterproofing qualities. Fully accredited membranes offer unrivalled protection when building on landfill sites and above and below ground applications.



VISQUEEN SELF ADHESIVE MEMBRANE

Visqueen Self Adhesive Membrane is a BBA Accredited self adhesive waterproofing system. It can be used as a tanking or damp proof membrane for both horizontal and vertical applications. Visqueen Self Adhesive Membrane prevents the ingress of water and associated water-borne alkalis present in some mortar and concrete.

- Self-adhesive membrane for above and below ground applications
- Tough, high performance, high density polyethylene membrane
- Provides resistance to puncture and tearing
- Use with unique Visqueen HP Tanking Primer to obtain best adhesion
- CE Mark to EN13969
- BBA 15/5208

System Accessories

- Visqueen High Performance (HP) Tanking Primer
- Visqueen TreadGUARD1500
- Visqueen Protect&Drain 6, 12 & 25
- Visqueen Top Hat Unit
- Visqueen Pro Detailing Strip



Typical Applications

- Used in vertical tanking or horizontal self adhesive applications, such as underground basements, lift pits or retaining walls



Typical Applications

- Above and below ground applications
- Suitable for any site where carbon dioxide, radon or methane are present
- Sites previously used for landfill as a result of bacteriological conditions

Visqueen Specialist Centre:



Structural
Waterproofing



Damp
Protection



VISQUEEN GR SAM

Visqueen Gas Resistant (GR) Self Adhesive Membrane is designed to prevent the transmission of carbon dioxide, radon and methane gases in tanking applications or where hydrostatic pressure is present. Resistance to gas is achieved by an integral aluminium film.

- Self-adhesive membrane for above and below ground application
- Superior adhesion and waterproofing qualities
- Integral aluminium foil for resistance to methane, radon and carbon dioxide
- BBA 15/5208 certified

System Accessories

- Visqueen High Performance (HP) Tanking Primer
- Visqueen TreadGUARD1500
- Visqueen Top Hat Unit
- Visqueen Pro Detailing Strip
- Visqueen Protect&Drain 6, 12 & 25



Visqueen Specialist Centre:



Gas
Protection



Structural
Waterproofing



Visqueen TorchOn Tanking Membrane is a robust waterproofing membrane, used for heavy duty tanking and gas proofing applications. It can be used both vertically and horizontally above and below ground level to prevent the ingress of water. Visqueen TorchOn Tanking Membrane should be used with Visqueen HP Tanking Primer on touch dry concrete. Substrates should be primed with Visqueen HP Tanking Primer prior to application. Visqueen TreadGUARD1500 should be used horizontally or for external vertical applications Visqueen Protect&Drain should be used to protect the membrane from backfill or site traffic.

- Robust tanking membrane
- Ideal for cold weather application
- Suitable for gas protection applications
- Torch bonded laps provide a homogenous sealed junction
- Used in basements, car parks, lift pits, reinforced concrete slabs and retaining walls
- BBA 15/5208 certified

System Accessories

- Visqueen High Performance (HP) Tanking Primer
- Visqueen Protect&Drain
- Visqueen Top Hat Unit
- Visqueen Protect&Drain 6, 12 & 25



Typical Applications

- Used below ground structures where high levels of hydrostatic (water) pressure exist
- Used as a horizontal damp proofing membrane or in low risk situations

Visqueen Specialist Centre:



Typical Applications

- Waterproofing applications to BS8102:2009 type A
- Slab edges and permanent shutter work
- Tanking below ground structure e.g. lift pits

The New and improved Visqueen Pre Applied Membrane is a robust, flexible and high performance waterproofing membrane. Utilising Visqueen's Advanced Membrane Technology, the membrane is more flexible, does not require protection and provides greater barrier properties from water vapour. The membrane has a textured face on one side designed to aid adhesion to cast concrete.

- New and improved polymer technology giving superior performance
- Extremely flexible thus improving installation times
- A robust pre applied waterproofing membrane
- Greater water vapour barrier properties
- Exceptional puncture resistance - No protection required

System Components

- Visqueen Ultimate Double Sided Joining Tape
- Visqueen Ultimate Lap Tape
- Visqueen Ultimate Retaining Disks
- Visqueen Protect&Drain
- Visqueen Top Hat Unit
- Visqueen Pro Detailing Strip

Visqueen Specialist Centre:



Product selector

Application

Permeable paving and attenuation less than or equal to 2 storage units high

Visqueen Urban Drainage Geomembrane (UDG)

Attenuation taking greater than 2 units high

Visqueen High Performance UDG

Contaminated land

Visqueen Ultimate Hydrocarbon UDG

Built up areas require effective drainage systems in order to manage surface water run off and to avoid the occurrence of flash flooding. In housing developments this is achieved with an underground stormwater attenuation tank system, where a membrane is used to encapsulate the tank.

For permeable paving systems, such as patios and driveways, a membrane is used below ground level to ensure effective water attenuation and dispersal. Visqueen's UDG membrane can be used in conjunction with an underground stormwater attenuation tank system, or as part of a surface water drainage system in garden and landscaping applications.

Stormwater Protection

A high performance range suitable for underground stormwater storage systems and also for permeable paving installations.



Visqueen Urban Drainage Geomembrane is a UK manufactured membrane using high performance polymers, suitable for underground stormwater storage systems and also for permeable paving systems. The Visqueen Urban Drainage Geomembrane System has been specially designed and tested for use with underground stormwater storage systems.

- Impervious membrane for underground drainage systems
- Suitable for permeable paving systems
- High resistance to puncture
- Restricts water entering the sub-grade
- Available as a taped system to be fabricated on site or supplied in welded sheets

System Accessories

- Visqueen UDG Double Sided Tape
- Corner protection units
- Medium duty protection boards
- Treadguard 300 fleece



Typical Applications

- Underground attenuation tank encapsulation, up to a maximum of 2 storage units high
- Permeable paving systems including patios, driveways, ponds and general landscaping applications



Typical Applications

- For attenuation tank encapsulations 2 units high, porous sub-base installations, containment and cut-off trenches

Visqueen High Performance UDG is a robust weldable geomembrane suitable for attenuation tank encapsulations, porous sub-base installations, containment and cut-off trenches. Using the latest polymer technology the membrane is flexible, has high puncture resistance and suitable for non-smooth surfaces and factory prefabrication to optimise on site installation.

- Suitable for various demanding geomembrane applications
- Conforms to Appendix C of CIRIA C697 & C753 within the SuDS Manual
- High resistance to puncture
- Excellent welding characteristics
- Extremely flexible in cold weather conditions

System Accessories

- Visqueen UDG Double Sided Tape
- Visqueen GR Single Sided Lap Tape
- Corner protection units
- Medium duty protection boards
- Treadguard 300 fleece

Visqueen Specialist Centre:



Structural Waterproofing



Damp Protection



Visqueen Specialist Centre:



Structural Waterproofing



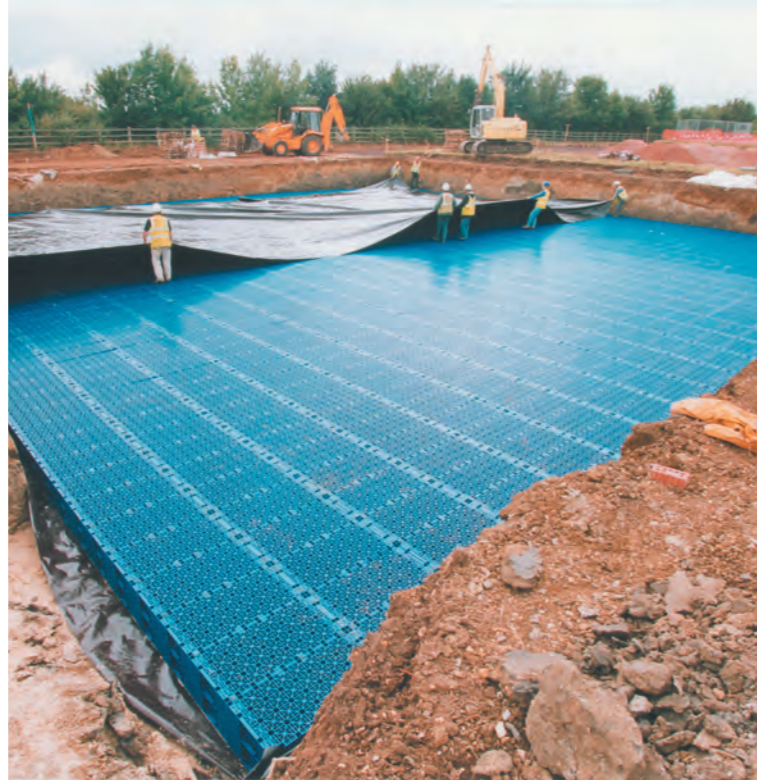


Visqueen Ultimate UDG is a copolymer thermoplastic geomembrane suitable for attenuation tanks and permeable paving systems where hydrocarbons exist and is VOC decay resistant. The product is black/grey in colour, 1mm thick and supplied in a roll size of 2.44m x 41m.

- Suitable for various demanding geomembrane applications
- Conforms to Appendix C of CIRIA C697 & C753
- Excellent welding characteristics
- Superior puncture and waterproofing characteristics
- Hydrocarbon resistant

System Accessories

- Visqueen TreadGUARD1500
- Visqueen Ultimate Double Sided Tape
- Visqueen Ultimate Lap Tape



Typical Applications

- Robust weldable geomembrane suitable for attenuation tank encapsulations, porous sub-base installations, containment and cut-off trenches
- Suitable for use where sites are affected by various Hydrocarbons and VOCs



Visqueen Specialist Centre:



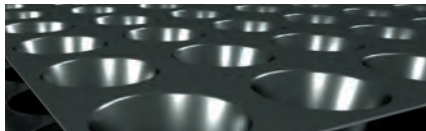


Cavity Drain System

An extensive range of drainage channels, pumps, sumps and alarms provide effective mechanical drainage solutions for all below ground structures where a cavity drain system is being installed.



VISQUEEN V20 CAVITY DRAIN MEMBRANE



The studded membrane is predominantly used as a floor membrane as part of the Visqueen Cavity Drain System. The system is typically used for internally tanking basements within new, existing and retrofit build projects. The system can also be used for heritage buildings and in conservation projects.

- A high quality robust HDPE studded membrane
- Suitable for new, existing and retrofit build projects
- Quick and easy to install flooring membrane
- BBA Approved
- BS8102 Type C cavity drain protection

System Components

- Visqueen V8 Wall Membrane
- Visqueen Cavity Drain Components
- Visqueen Anti Lime Coating



Visqueen Specialist Centre:



Structural Waterproofing



Typical Applications

- A floor membrane for internally tanking basements within new, existing and retrofit builds
- Vertical (wall) applications where a higher drainage capacity is required or complex convoluted wall shapes



Typical Applications

- Internally tanking basements, sub structures and retaining walls within new, existing and retrofit builds

VISQUEEN V8 CAVITY DRAIN MEMBRANE



Visqueen V8 Wall Membrane is a 0.5mm thick high density polyethylene (HDPE) profiled sheet with approximate 7mm high studs. The membrane is tough but pliable and can be bent round corners and projections without risk of breaking, even in very low temperatures. The product can be easily cut with a knife or scissors. The membrane is an integral part of Visqueen's Cavity Drain System which effectively acts as a below (and some above) groundwater management system.

- A high quality robust HDPE studded membrane
- Suitable for new, existing and retrofit build projects
- Quick and easy to install wall membrane
- BBA Approved
- BS8102 Type C cavity drain protection

System Components

- Visqueen V20 Cavity Drain Membrane
- Visqueen Cavity Drain Components
- Visqueen Anti Lime Coating



Visqueen Specialist Centre:



Structural Waterproofing



Visqueen Anti-lime Coating is a blend of high-grade silicates and wetting agents, held in suspension with water as a carrier. Once applied to the concrete surface, this unique product helps seal the concrete surface. Supplied ready to use in 25kg drums.

- An effective anti-lime coating to new concrete in Cavity Drain systems
- Reduces “free lime” leaching from concrete surfaces
- Helps seal the concrete surface
- Resistant to acid concentrates
- Normally one coat application

System Components

- Visqueen V20 Cavity Drain Membrane
- Visqueen V8 Wall Membrane
- Visqueen Cavity Drain Components



Visqueen Specialist Centre:



Typical Applications

- Designed to seal concrete surfaces and to reduce the leaching of ‘free lime’.

Visqueen’s Cavity Drain system components ensuring complete drainage systems is provided.

- Extensive range of drainage channels, pumps, sumps and alarms
- All products designed to be fully maintainable in accordance to BS 8102
- Provide effective mechanical drainage solutions for all below ground structures

Pre-Treatment

Anti-lime Coating

Membrane Fixings and Seals

Visqueen V20 Sealing Rope
 Visqueen V8 Double Sided Sealing Tape
 Visqueen CD Corner Strip
 Visqueen Masonry Plugs
 System Components Calculator

Sumps and Pumps

Water Pump Pro (single mains powered pump) including 9v Battery Alarm
 Water Pump Pro Plus (twin mains powered pumps)
 Water Pump Pro Plus Battery Back-up System

Control Panels and Alarms

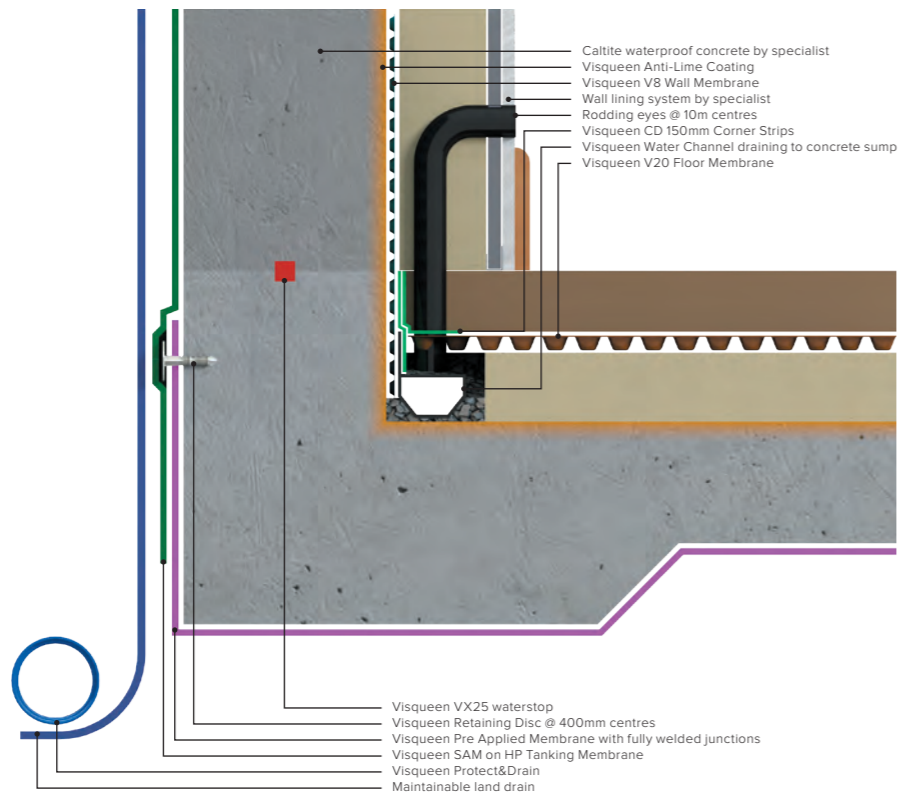
Dual Assist Control Panel including oas
 Telemetric Dialler Alarms

Water Channel Accessories

Water Channel
 Water Channel Outlet
 Water Channel End Outlet
 Water Rodding Eye in 200mm long channel
 Water Channel Corner Piece with Rodding Eye
 Water Channel Connector
 Water In-line T Piece with Rodding

Visqueen Specialist Centre:



Standard Detail – Cavity Drain Membrane
Ground Basement

TPS & Megafilm

The temporary site protection systems offered by Visqueen are used to protect a diverse range of surfaces in construction.



Visqueen Building Products ECO TPS range is a blown film of extruded low-density polyethylene. Visqueen ECO TPS range is a high quality Temporary Protective Sheeting (TPS) manufactured from 100% Recycled LDPE. ECO TPS is available in 4 different sizes and can be used for a wide variety of applications. Visqueen Building Products ECO TPS enables users to protect worksites whilst doing more to protect the environment. ECO TPS is a range of temporary protective sheeting for use on floors, verticals, fixtures and fittings that's made entirely from recycled waste polythene - predominantly from the UK's agricultural and horticultural industries.

- 100% Recycled LDPE
- Available in light duty, medium duty, heavy-duty and extra heavy-duty grades
- Supplied in convenient sized rolls
- Can be used for a variety of applications including environmental protection such as dust and rain
- Not suitable for use as a Vapour Control Layer

System Components

- Visqueen Double Sided Jointing Tape
- Visqueen Pro Single Sided Tape



Typical Applications

- Can be used for a wide variety of temporary protection applications



Typical Applications

- Can be used for a wide variety of temporary protection applications

A high quality virgin grade Temporary Protective Sheeting (TPS) manufactured from prime polymers that can be used for a wide variety of applications. Visqueen Clear TPS film is available in a manageable roll size which is labour saving and covers large areas fast, so less jointing has to take place. The ease of fit helps speed up the protection process, reducing the risk of damage to exposed finishes.

- High clarity virgin grade Temporary Protective Sheeting
- Light duty applications including environmental protection such as dust and rain
- Not suitable for use as a Vapour Control Layer

System Components

- Visqueen Double Sided Jointing Tape
- Visqueen Pro Single Sided Tape



Visqueen Specialist Centre:



Visqueen Specialist Centre:



Visqueen LPS1207 Flame Retardant Sheeting is a high quality polyethylene temporary protective sheeting system that provides effective protection in various applications whilst buildings undergo refurbishment or construction. Visqueen Flame Retardant Sheeting can be used as a temporary seal for screening off individual areas, for draping, and as protective sheeting for a variety of surfaces. Also suitable for wrapping large pieces of asbestos or asbestos tent applications and where there are risks of electrical hazards.

- Ideal for screening, draping, covering, hanging and vertical applications
- Complies with the Joint Code of Practice Insurance requirements
- Suitable for asbestos removal or wrapping film
- A range of flame retardant protection sheets accredited to LPS1207
- Manufactured in the UK by Visqueen

System Components

- Visqueen Megafilm Flame Retardant (FR)Tape



Typical Applications

- Screening, draping, covering, hanging and vertical applications

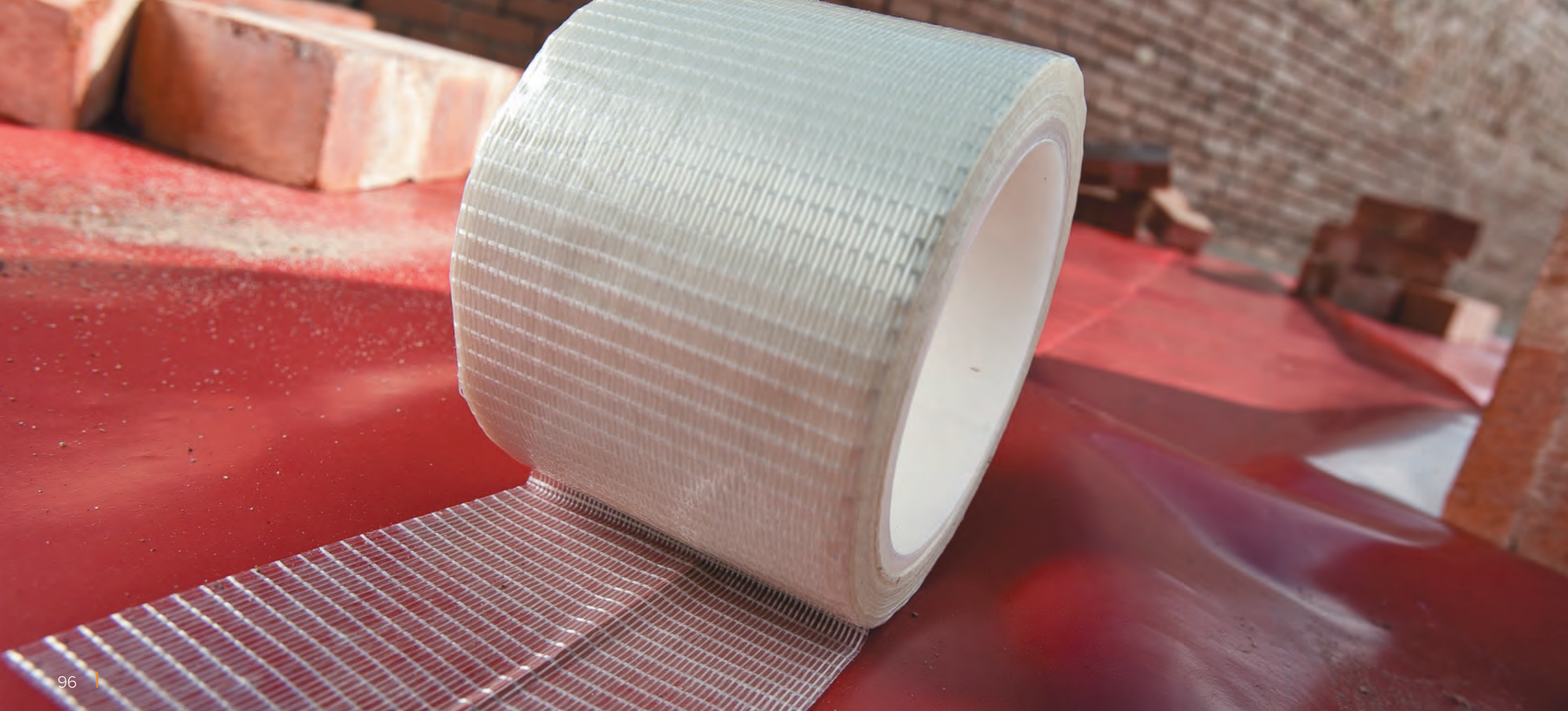
Visqueen Specialist Centre:



Jointing & Vapour Tapes.....97

- Double Sided DPM Jointing Tape 100
- Single Sided DPM Jointing Tape 100
- Zedex DPC Jointing Tape101
- Gas Resistant (GR) Foil Tape101
- Single Sided Vapour Jointing Tape 102
- Double Sided Vapour Tape 102
- Vapour Barrier Tape System103
- Double Sided Vapour Tape for use
with High Performance VCL104
- Visqueen Pro Vapour Jointing
and Pro Edge Tape104
- Gas Resistant (GR) Foil Tape 105
- Double Sided DPM Jointing Tape 105
- Megafilm Flame Retardant (FR) Tape 106
- UDG Double Sided Tape 106
- Pro Detailing Strip107





Jointing & Vapour Tapes

Visqueen supplies an array of system components to ensure effective installation.



Product selector

Visqueen Pro DPM Jointing Tape System

Visqueen Pro Double Sided DPM Jointing Tape
Visqueen Pro Single Sided DPM Jointing Tape

Visqueen DPC Jointing Tape System

Visqueen Zedex DPC Jointing Tape
Visqueen Gas Resistant Foil Tape

Visqueen Vapour Check Tape System

Visqueen Double Sided Vapour Tape
Visqueen Single Sided Vapour Tape

Visqueen Pro Vapour Barrier Tape System

Visqueen Pro Vapour Jointing Tape
Visqueen Pro Edge Vapour Jointing Tape
Visqueen Pro Double Sided Vapour Tape

Visqueen Gas Barrier/ LPGM/
Radon Tape System

Visqueen Pro Double Sided DPM Jointing Tape
Visqueen Gas Resistant Foil Tape

Visqueen UDG Tape System

Visqueen UDG Jointing Tape

Visqueen Pro Detailing Strip system

Visqueen Pro Detailing strip 500mm
Visqueen Pro Detailing strip 300mm

Jointing & Vapour Tapes

Visqueen's comprehensive range of tapes ensures the effective bonding and sealing of membranes in order to provide continuity of protection in damp, vapour and gas applications.



Visqueen Pro Double Sided DPM Jointing Tape

Visqueen Pro Double Sided DPM Jointing Tape is a high performance blue double sided butyl mastic tape, supplied in 50mm x 10m rolls for damp proof membrane joints.

A tape for bonding Visqueen Damp Proof Membranes (DPM) at lap ends and for bonding membranes to Damp Proof Courses (DPC) at junctions with internal and external walls. For Visqueen Damp Proof Membranes, the joint should then be sealed using Visqueen Pro Single Sided Jointing Tape.

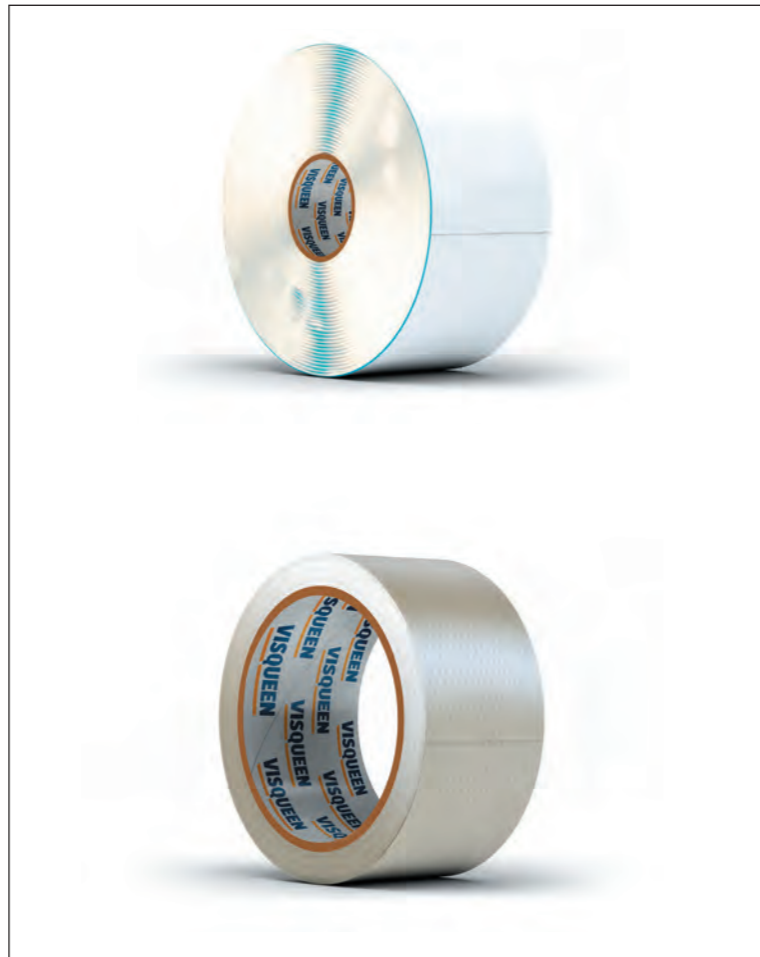
- Resists moisture & gas ingress
- Excellent adhesion
- BBA Approved
- Part of the Visqueen Pro 2 part system

Visqueen Pro Single Sided DPM Jointing Tape

A cross weave glass fibre reinforced tape coated with a high tack aggressive adhesive system for sealing laps in damp proof membranes. When used in conjunction with Visqueen Pro Double Sided Jointing tape, the system performs a BBA (Cert 94/3009) approved damp proof seal. Supplied in 75mm x 25m rolls.

Visqueen Pro Single Sided Jointing tape is for sealing Visqueen Damp Proof Membranes at overlaps and for sealing membranes to Visqueen Damp Proof Courses at junctions with internal and external walls.

- Independently tested for peel and adhesion
- Crossweave film for excellent anti-tear properties
- Part of the BBA approved DPM Jointing system



Visqueen Zedex DPC Jointing Tape

A high performance double sided butyl tape supplied in 100mm x 15m rolls.

Ensure surfaces are clean and dry and the tape is applied in temperatures above 5°C. All laps must be a minimum of 150mm wide. Visqueen Zedex DPC Jointing Tape should be applied approximately 50mm from the edge. The next roll of Visqueen Zedex DPC Jointing Tape should then be overlapped.

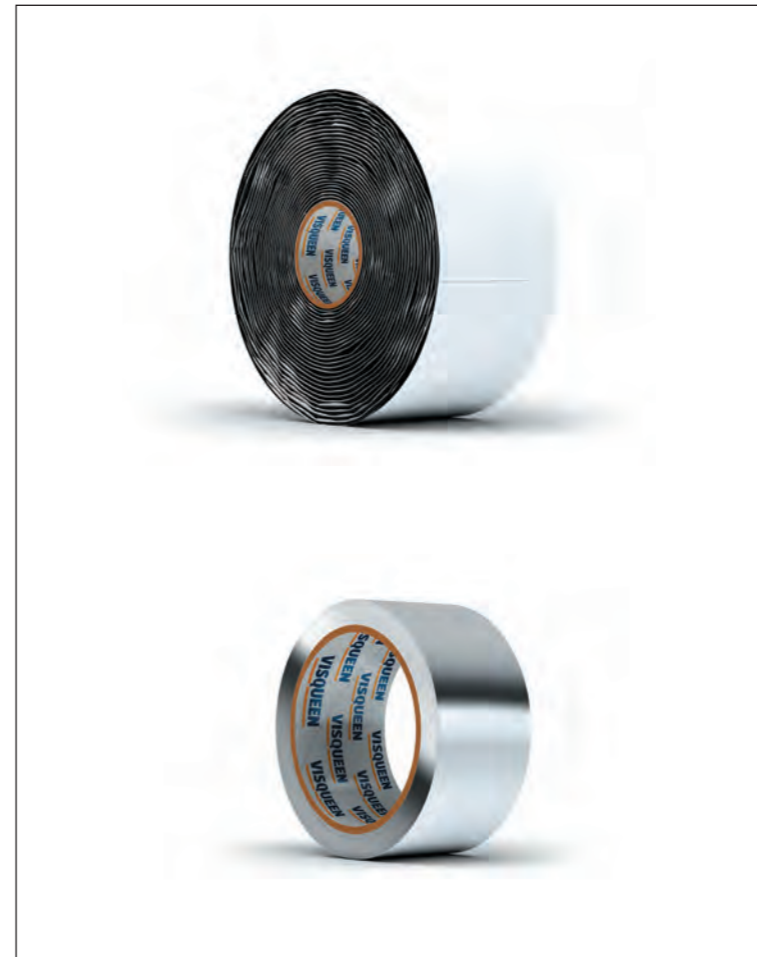
- Resists moisture & gas ingress
- Excellent adhesion
- BBA Approved

Visqueen Gas Resistant (GR) Foil Tape

A single sided aluminium and polyester composition with an acrylic adhesive supplied in 75mm x 50m rolls.

For sealing gas membranes (Visqueen LPGM, Visqueen Gas Barrier and Radon) at overlaps and for sealing membranes to gas proof courses at junctions with internal and external walls.

- Provides a gas tight seal for gas membrane overlaps
- Secures gas membranes to DPCs
- Part of BBA Approved Gas Membrane systems



Visqueen Single Sided Vapour Jointing Tape

Visqueen Single Sided Vapour Jointing Tape for use with High Performance VCL is suitable for forming airtight seals at joints and general detailing as part of Visqueen Vapour Check system. Supplied in 50mm x 15m rolls.

- Outstanding working temperature range -40°C to 40°C
- Exceptional adhesion to polythene, wood and metal
- Displaces moisture ensuring good bond to surface

Visqueen Double Sided Vapour Tape

Visqueen Double Sided Vapour tape utilises Visqueen's Advanced Adhesive Technology. With outstanding working temperature range -40°C to 40°C and exceptional adhesion to wood and metal. Displaces moisture ensuring good bond to surface. Supplied in 20mm x 50m rolls.

- Utilises Visqueen's advanced adhesive technology
- Outstanding appliance temperature range -40°C to 40°C
- Exceptional adhesion to wood and metal
- 30x more aggressive than standard adhesive systems at low temperatures
- Displaces moisture ensuring good bond to surface

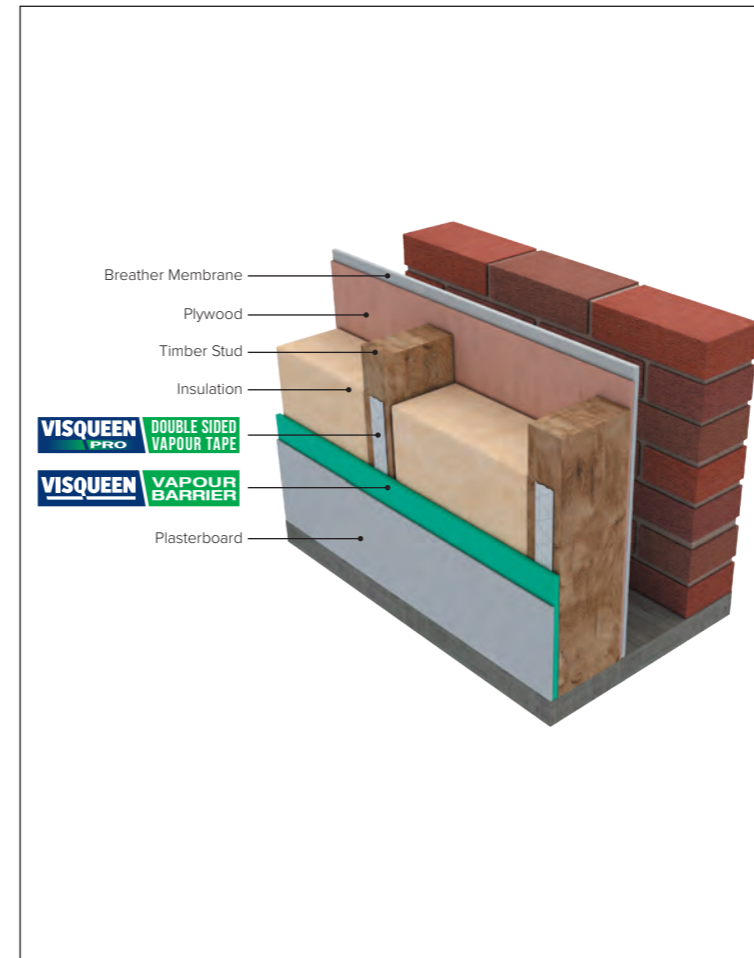


Visqueen Pro Vapour Barrier Tape System

Visqueen Pro's new high performance range of vapour control tapes, when installed correctly with Visqueen Vapour Barrier membrane (also known as Vapour Control Layers, VCLs), restrict vapour permeation and increase the thermal efficiency of buildings. Visqueen's Vapour Control system is part of a "Build tight-Ventilate right" strategy and protects insulation from condensation damage.

The high performance range consists of:

- Visqueen Pro Double Sided Vapour Tape – 20mm x 50m x 350gsm for mounting vapour barriers on metal or timber substructures
- Visqueen Pro Vapour Tape – 75mm x 15m for jointing vapour barriers
- Visqueen Pro Vapour Edge Tape – 150mm x 15m for flashing/sealing of vapour barriers. Also detailing round penetrations



Visqueen Pro Double Sided Vapour Tape for use with High Performance VCL

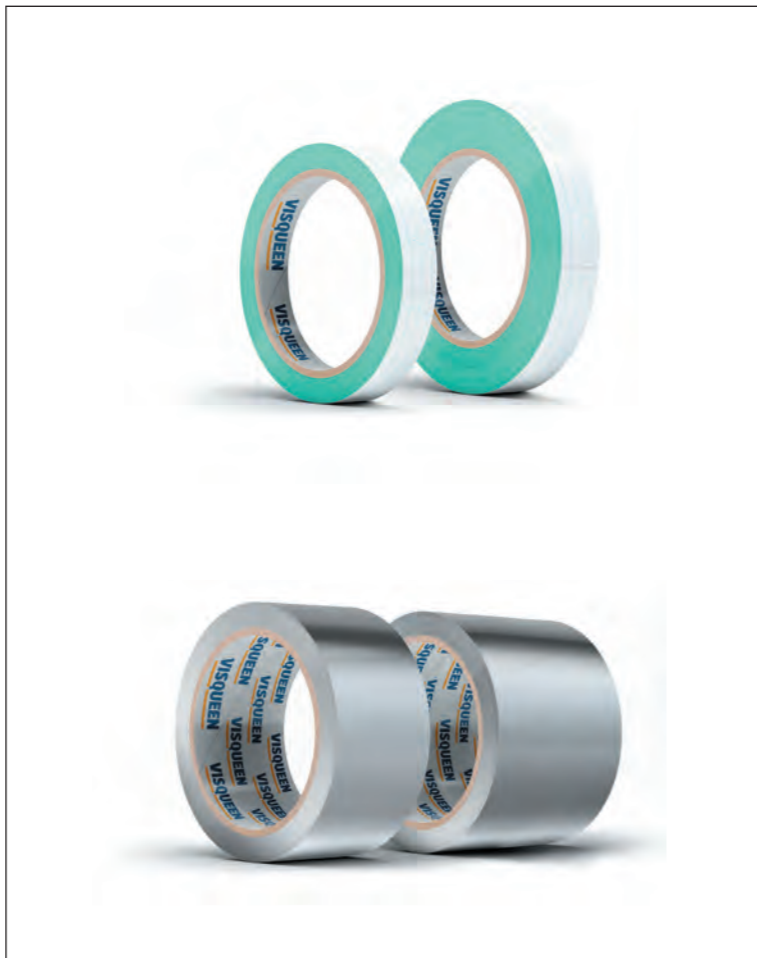
Visqueen Pro Double Sided Vapour tape utilises Visqueen's Advanced Adhesive Technology. With outstanding working temperature range -40°C to 40°C and exceptional adhesion to wood and metal. Displaces moisture ensuring good bond to surface.

- Utilises Visqueen's advanced adhesive technology
- Outstanding appliance temperature range -40°C to 40°C
- Exceptional adhesion to wood and metal
- 30x more aggressive than standard adhesive systems at low temperatures
- Displaces moisture ensuring good bond to surface

Visqueen Pro Vapour Jointing and Pro Edge Tape

Visqueen Pro Vapour Jointing and Pro Edge Tapes are manufactured using a valeron/foil laminate containing a highly aggressive acrylic adhesive system. Visqueen Vapour Tape is 75mm x 15m and used to joint/seal laps in Visqueen Vapour Control Layer Membranes. Visqueen Vapour Edge Tape is 150mm x 15m and used to seal Visqueen Vapour Control Layer Membranes to perimeters on various surfaces such as wood and masonry.

- Super aggressive foil laminate adhesion
- Performs effectively in sub-zero temperatures
- Multi surface tape
- Water vapour tight seal
- Puncture resistant



Visqueen Gas Resistant (GR) Foil Tape

A single sided aluminium and polyester composition with an acrylic adhesive supplied in 75mm x 50m rolls.

For sealing gas membranes (Visqueen LPGM and Radon) at overlaps and for sealing membranes to gas proof courses at junctions with internal and external walls.

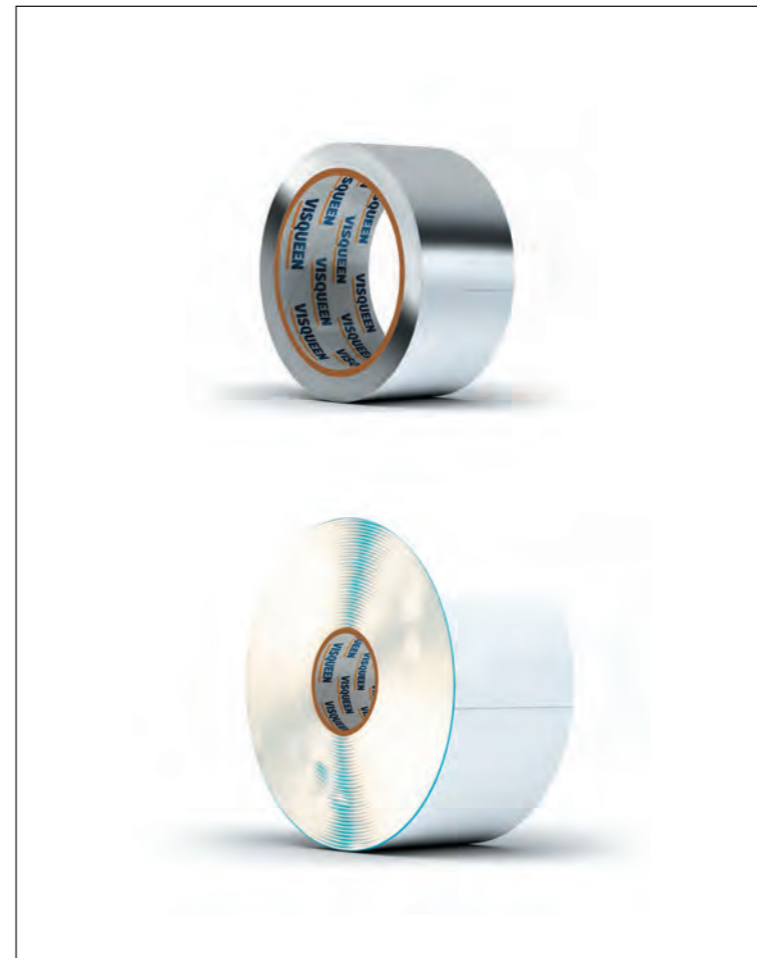
- Provides a gas tight seal for gas membrane overlaps
- Secures gas membranes to DPCs
- Part of BBA Approved Gas Membrane systems

Visqueen Pro Double Sided DPM Jointing Tape

Visqueen Pro Double Sided DPM Jointing Tape is a high performance blue double sided butyl mastic tape, supplied in 50mm x 10m rolls for damp proof membrane joints.

A tape for bonding Visqueen Damp Proof Membranes (DPM) at overlaps and for bonding membranes to Damp Proof Courses (DPC) at junctions with internal and external walls. For Visqueen Damp Proof Membranes, the joint/lap should then be sealed using Visqueen Pro Single Sided Jointing Tape.

- Resists moisture & gas ingression
- Excellent adhesion
- BBA Approved
- Part of the Visqueen Pro 2 part system



Visqueen Megafilm Flame Retardant (FR) Tape

A ribbed flame retardant tape coated with a rubber based clear adhesive system. Matt finish, easy tear and clean removable features. Supplied in 75mm x 33m rolls.

Ensure surfaces are clean and dry. Overlap adjoining sheet a minimum of 75mm and seal lap with Visqueen Megafilm Flame Retardant tape. For perimeter edging run the tape equidistant over the film and surface. To ensure seal integrity use a roller to press down prior to use please ensure tape is tested on surface for suitability. Jointing Tape should then be overlapped.

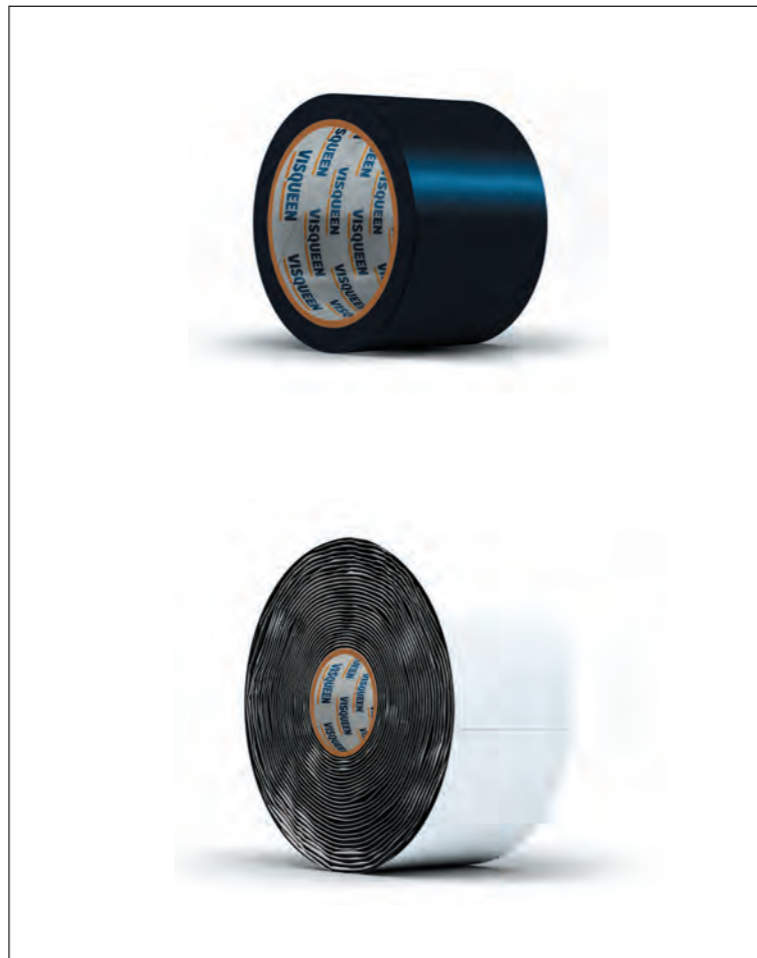
- Resists Moisture & Gas ingress
- Excellent adhesion
- BBA Approved

Visqueen UDG Double Sided Tape

A double sided butyl tape supplied in 100mm x 15m rolls. For bonding together Visqueen UDG Membranes in attenuation wrap (no more than 2 units deep) and permeable paving applications.

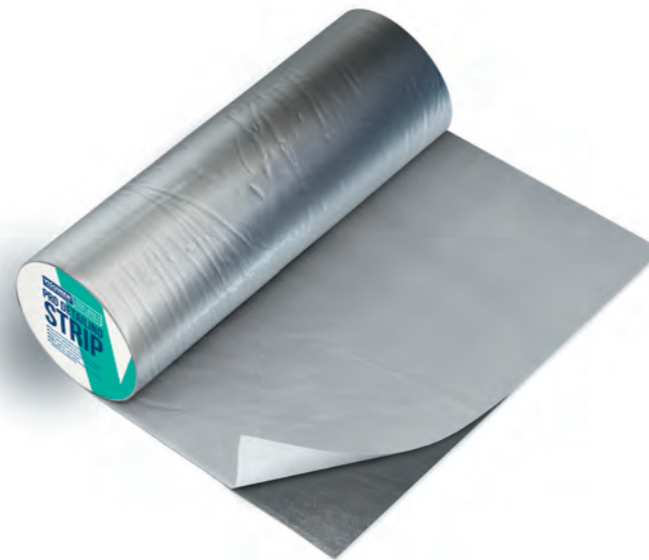
Ensure surfaces are clean and dry and the tape is applied in temperatures above 5°C. All laps must be a minimum of 150mm wide. Visqueen UDG Double Sided Tape should be applied approximately 50mm from the edge. The next width of Visqueen Urban Drainage Geomembrane should then be overlapped. The use of Visqueen TreadGUARD1500 protection board provides additional support to taped joints as well as eliminating the risk of puncture from backfill. Jointing Tape should then be overlapped.

- Bonds and seals Visqueen UDG Membranes
- Excellent adhesion



NEW!

500mm
SIZE AVAILABLE



Visqueen Pro Detailing Strip

Visqueen Pro Detailing Strip is a silver faced, aluminium lined film utilising Visqueen's advanced self adhesive system, available in 2 sizes now (300mm and 500mm).

The improved formulation system gives superior adhesion to concrete, polyethylene and steel at wide ranging temperatures. It has been tested and compared to standard bitumen adhesives at low temperatures and has over twice the peel and adhesion properties. The new adhesive has also proven to work at below 5°C.

- 2 x superior adhesion in cold weather
- Ideal for complex junctions, stanchions and terminations
- Utilises Visqueen's advanced adhesion technology
- BBA approved with Visqueen Damp, Gas and Tanking membranes
- Used with Visqueen HP Tanking Primer Solution to obtain best performance
- 300mm and 500mm available



VISQUEEN

Part of **RPC bpi** group

Heanor Gate, Heanor, Derbyshire, DE75 7RG

v +44 (0) 333 202 6800

m enquiries@visqueen.com

o www.visqueen.com

f Visqueen Construction

l @visqueenbp

i Visqueen Construction