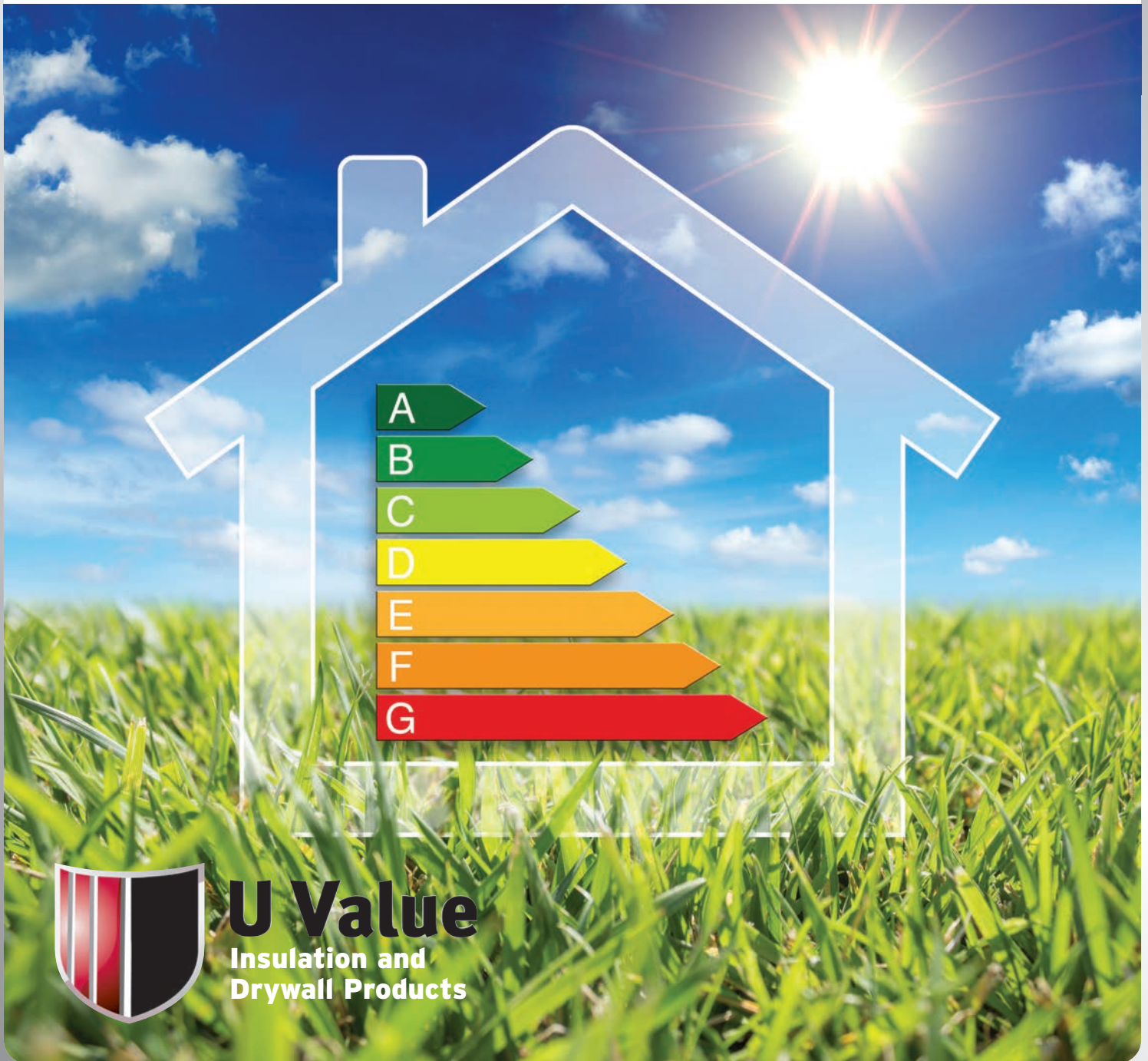




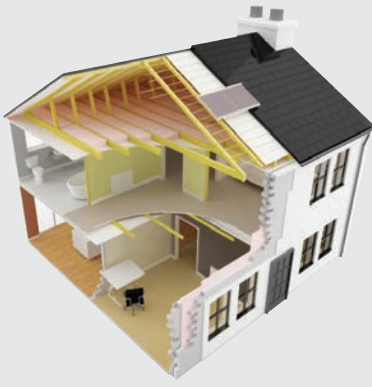
# Warmline EPS

## Polystyrene Bonded to Plasterboard

The Warmline insulating laminates are designed as a simple effective way to improve the thermal efficiency in both walls and roof applications. They are fully applicable with Part L of the building regulations.



**U Value**  
Insulation and  
Drywall Products



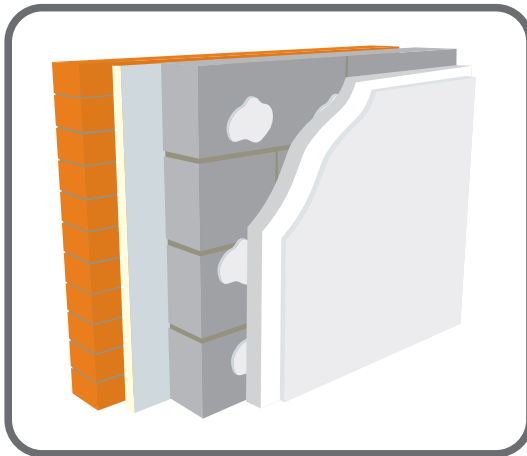
## Expanded Poly Bonded to Plasterboard Benefits

- All thicknesses readily available
- Simple solution to upgrading walls and roofs
- Quick and easy to install
- Can be used for both newbuild and refurb
- A simple way to meet building regulations
- Cost effective return

## Technical Specifications

Product Code & Size	Description	Overall Thickness	Foam Thickness	Plasterboard Thickness	Sheets per Pallet	m <sup>2</sup> per Board	Thermal Resistance R-value	U-value Fixed Batons (W/m <sup>2</sup> K)	U-value Dot & Dab (W/m <sup>2</sup> K)
Warmline EPS 1.2 x 2.4	Extruded Poly Bonded to Plasterboard	22mm	12.5mm	9.5mm	95	2.88	0.374	0.992	1.059
		30mm	20.5mm	9.5mm	70	2.88	0.584	0.821	0.866
		40mm	30.5mm	9.5mm	53	2.88	0.720	0.739	0.775
		50mm	40.5mm	9.5mm	42	2.88	1.111	0.573	0.594
		60mm	50.5mm	9.5mm	35	2.88	1.374	0.498	0.514

Calculations are based on a 215mm thick solid brickwork wall and includes a 2mm plaster skim coat. Timber battens are 25x50mm at 600mm Centres

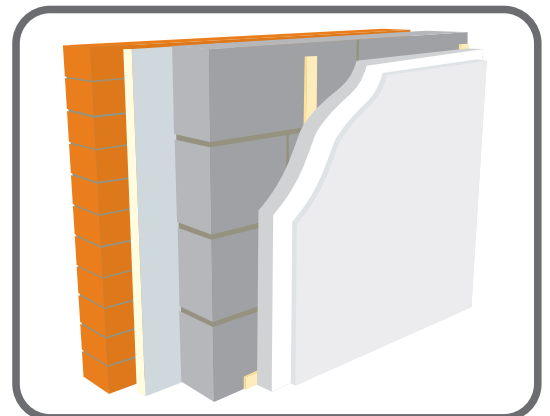


### Fixing instructions for Dot and dab

- For bonding Warmline range to a wall use a proprietary gypsum based adhesive.
- Please follow the manufacturers instructions. As per manufacturers recommendations apply a continuous ribbon of adhesive around any openings.
- Apply 3 vertical rows of adhesive dabs to the walls at 300mm centres. Also insure that there is a continuous bead at the bottom and top.
- After the adhesive has set fix a minimum of 2 insulation anchors through the board into the wall. They must go into the masonry by a minimum of 30mm.

### Fixing instructions for mechanical fixing

- Fix to the wall treated batons 50mm x 25mm at a maximum of 600mm centres. Also fit horizontal batons at both floor and ceiling level.
- Then fit the Warmline board using drywall screws at 150mm centres. Always insure that they penetrate the batons by 25mm.
- When installing boards to rafters fix them at right angles to the timbers. To ensure a solid finish bridging pieces are to used inbetween the rafters.



## Insulation Manufacturers & Distributors

For more details you can contact our technical team

Unit 6, Coopers Point, Coopers Lane, Knowsley Industrial Park, Liverpool L33 7UB

Sales: **07872 989689** Main Depot: **01515 463260** Fax: **0151 5484543**

