



THE WORLD LEADER IN LADDERS™

# Telescopic Soft Close Extension Ladder

850SERIES

*Smaller folded  
size than standard  
extension ladders*



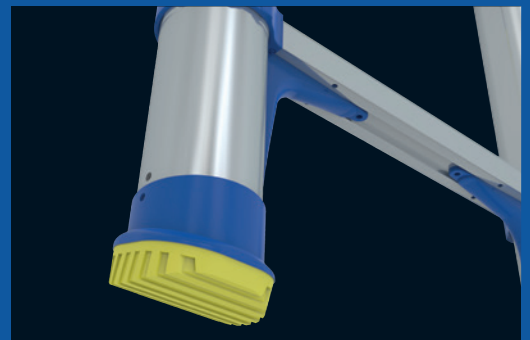
## SOFT CLOSE DESIGN

Smooth retraction to prevent finger trapping



## COMPACT DIMENSIONS

Ideal for easy transportation and storage



## MOULDED FOOT BRACE

Provides maximum strength to protect against damage

See our full line of access solutions  
[www.wernerladder.co.uk](http://www.wernerladder.co.uk)



THE WORLD LEADER IN LADDERS™

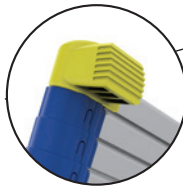
850SERIES

# Telescopic Soft Close Extension Ladder

**150kg**  
MAX. LOAD  
(Load includes user, tools, materials, etc.)



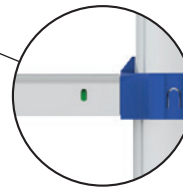
Safety grip wall bumpers for firm grip and stability



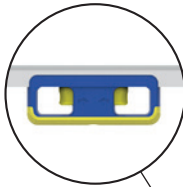
Soft close design for smooth retraction to prevent finger trapping

Automatic locking mechanism for added security when in use

Lock indicators for increased safety



Single handed unlocking system for easy closure



Rubber hand grip provides a secure grip when carrying the ladder



Moulded foot brace provides maximum strength to protect against damage



Non-marking feet protects floor from damage



Compact dimensions for easy transportation and storage



Model 85026



EN131-6

Suitable for Professional & Non-professional use

## SPECIFICATIONS

Product Code	Number of Rungs	Closed Length	Extended Length	Safe Working Height*	Weight
85026	9	0.76m (2'6")	2.6m (8'6")	3.15m (10'4")	8.4kg
85029	10	0.79m (2'7")	2.9m (9'6")	3.42m (11'2")	9.4kg

\*Based on 1.75m (5'9") as the average reach height of a person.