



# Product Guide

**A National Manufacturer of  
High Quality Concrete  
& UPVC Roofing  
Solutions**



## Introduction

Russell Roof Tiles offer a comprehensive range of roofing solutions for both commercial and housing projects. Our clients include major national house builders, various Local Authorities, Primary Care Trusts and care home providers, as well as numerous commercial projects.

From our manufacturing sites in Burton-on-Trent and Lockerbie we manufacture a range of concrete roof tiles, fittings, and an extensive range of dry fix and ventilation products, suitable for use on both new and refurbishment projects. These are all designed to meet current building regulation requirements.

Innovation is at the forefront of our business and we are continually looking at ways to improve our portfolio to meet the evolving needs of our customers. Following our original introduction of the Grampian tile we were the first manufacturer to launch a thinner leading edge interlocking tile range; starting with the Galloway.



# Contents

<b>Natural Range</b>	<b>04</b>
Galloway	05
Lothian	06
Moray	07
Polden	08
Bute	09
<b>Commercial Range</b>	<b>10</b>
Grampian	11
Highland	12
Double Roman	13
Pennine	14
<b>Regency Range</b>	<b>15</b>
Traditional Plain Tile	16
Regency Range Blends	17
<b>Roof Accessories</b>	<b>19</b>
Ridge Tiles	20
Crested Ridge & Finials	22
Plain Tile Accessories	23
<b>Dry Fix Systems</b>	<b>24</b>
RussFast Ridge 5m	25
RussFast Hip 5m	26
RussFast Mono Ridge 5m	27
Natural Range Dry Verge System	28
Commercial Range Dry Verge System	29
Dry Fix Valley 3m	30
<b>Ventilation Products</b>	<b>31</b>
Eaves Vent System 6m	32
Gas Vent Ridge	33
Vent Tile	34
RussVent	35
Abutment Vent System 3m	37
<b>Tile Fixings</b>	<b>38</b>
<b>Accreditations</b>	<b>40</b>
<b>Services</b>	<b>41</b>
<b>Locations</b>	<b>42</b>

# Natural Range

The Russell Natural Range is a series of thinner leading edge tiles with either a smooth face, a riven finish, or a mock joint format. These all give a different natural slate or clay appearance

Galloway 05

Lothian 06

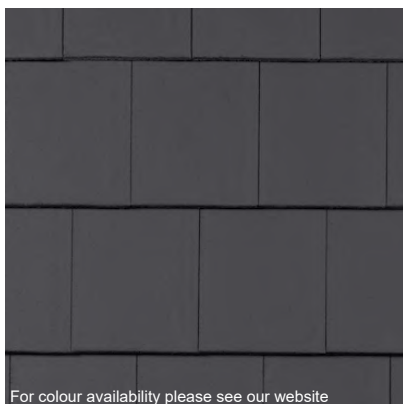
Moray 07

Polden 08

Bute 09



## Galloway



A thinner leading edge flat tile with a hidden interlock giving the appearance of slate when laid half-broken bonded.

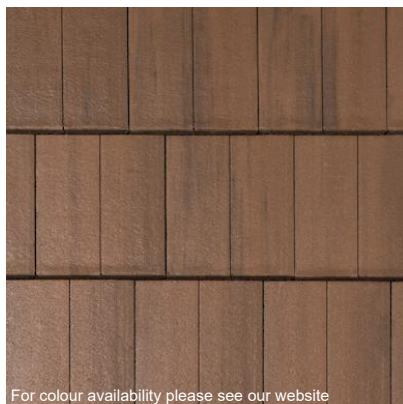


For colour availability please see our website

### Technical Data

Size	Weight	Thickness	Tiles per Pallet	Tiles Per Band
418 x 330mm	4.6kg	16mm	240	40
Compliance	Manufactured to the requirements of BS EN 490 and BS EN 491			
Manufacture	Produced by high pressure extrusion and compaction			
Fire	Non-combustable when tested to BS476: Part 3. 2004 (spread of flame and fire prevention). SAA Classification			
Maximum Pitch	60°			
Minimum Pitch	17.5° (100mm headlap) normal exposure, (125mm headlap) severe exposure 22.5° (75mm headlap) normal exposure, (100mm headlap) severe exposure For rafters in excess of 8m please consult Russell Technical Department			
Headlap (minimum)	75mm			
Gauge (maximum)	343mm			
Covering Width	300mm			
Covering Capacity	75mm headlap - 9.7 tiles/m <sup>2</sup> 100mm headlap - 10.5 tiles/m <sup>2</sup> 125mm headlap - 11.4 tiles/m <sup>2</sup>			
Weight of Tiling	75mm headlap - 45kg/m <sup>2</sup> 100mm headlap - 48kg/m <sup>2</sup> 125mm headlap - 52kg/m <sup>2</sup>			
Batten Size (minimum)	50 x 25mm (for rafters not exceeding 600mm c/c)			
Battens Required	343mm gauge - 2.9m/m <sup>2</sup> 318mm gauge - 3.1m/m <sup>2</sup>			
Ridge	Universal Angle, Multi, Half Round RussFast Ridge 5m			
Eave	Standard tile Eaves Vent System 6m			
Verge	1/2 tile in alternate courses with Natural Range Dry Verge or 150mm wide fibre reinforced cement strip to provide 30-60mm overhang			
Hip	Universal Angle, Multi, Third Round RussFast Hip 5m			
Valley	Dry Fix Valley (70mm components) or lead valley in accordance with LSA guidelines			
Roof Vents	Galloway RussVent or Galloway Vent Tile			
Top Abutment	Top abutment apron flashing or 3m Abutment Vent System and separate apron flashing			
Side Abutment	Side abutment step and cover flashing with secret gutter or continuous side abutment flashing with secret gutter			
Tile Fixings	40 x 3.35mm Aluminium Alloy Nails, smooth or ring shank dependant on Fixing Specification. For clips please see page 39			

## Lothian



For colour availability please see our website

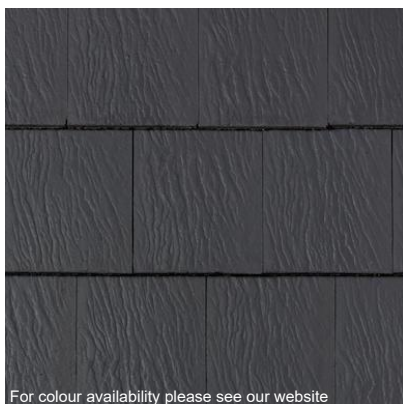
A thinner leading edge tile with a mock joint and hidden interlock. The tile is used to create a slate or small format tile appearance whilst offering the commercial benefits of a concrete tile.



### Technical Data

Size	Weight	Thickness	Tiles per Pallet	Tiles Per Band
418 x 330mm	4.6kg	16mm	240	40
<b>Compliance</b>	Manufactured to the requirements of BS EN 490 and BS EN 491			
<b>Manufacture</b>	Produced by high pressure extrusion and compaction			
<b>Fire</b>	Non-combustable when tested to BS476: Part 3. 2004 (spread of flame and fire prevention). SAA Classification			
<b>Maximum Pitch</b>	60°			
<b>Minimum Pitch</b>	17.5° (100mm headlap) normal exposure, (125mm headlap) severe exposure 22.5° (75mm headlap) normal exposure, (100mm headlap) severe exposure For rafters in excess of 8m please consult Russell Technical Department			
<b>Headlap (minimum)</b>	75mm			
<b>Gauge (maximum)</b>	343mm			
<b>Covering Width</b>	300mm			
<b>Covering Capacity</b>	75mm headlap - 9.7 tiles/m <sup>2</sup> 100mm headlap - 10.5 tiles/m <sup>2</sup> 125mm headlap - 11.4 tiles/m <sup>2</sup>			
<b>Weight of Tiling</b>	75mm headlap - 45kg/m <sup>2</sup> 100mm headlap - 48kg/m <sup>2</sup> 125mm headlap - 52kg/m <sup>2</sup>			
<b>Batten Size (minimum)</b>	50 x 25mm (for rafters not exceeding 600mm c/c)			
<b>Battens Required</b>	343mm gauge - 2.9m <sup>2</sup> 318mm gauge - 3.1m <sup>2</sup>			
<b>Ridge</b>	Universal Angle, Multi, Half Round RussFast Ridge 5m			
<b>Eave</b>	Standard tile Eaves Vent System 6m			
<b>Verge</b>	1/4 or 3/4 tile in alternate courses with Natural Range Dry Verge or 150mm wide fibre reinforced cement strip to provide 30-60mm overhang			
<b>Hip</b>	Universal Angle, Multi, Third Round RussFast Hip 5m			
<b>Valley</b>	Dry Fix Valley (70mm components) or lead valley in accordance with LSA guidelines			
<b>Roof Vents</b>	Lothian RussVent or Lothian Vent Tile			
<b>Top Abutment</b>	Top abutment apron flashing or 3m abutment Vent System and separate apron flashing			
<b>Side Abutment</b>	Side abutment step and cover flashing with secret gutter or continuous side abutment flashing with secret gutter			
<b>Tile Fixings</b>	40 x 3.35mm Aluminium Alloy Nails, smooth or ring shank dependant on Fixing Specification. For clips please see page 39			

## Moray



The Moray is a thinner leading edge tile with a hidden interlock and a traditional riven finish to the surface which gives it a slate appearance when laid half-broken bonded.

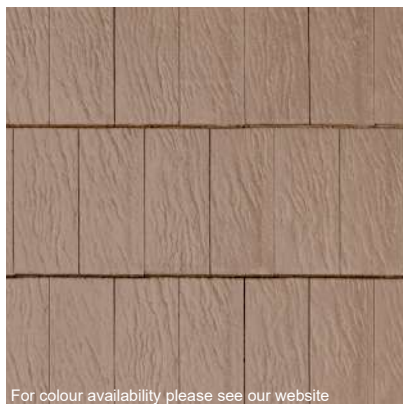


For colour availability please see our website

### Technical Data

Size	Weight	Thickness	Tiles per Pallet	Tiles Per Band
418 x 330mm	4.6kg	16mm	240	40
<b>Compliance</b>	Manufactured to the requirements of BS EN 490 and BS EN 491			
<b>Manufacture</b>	Produced by high pressure extrusion and compaction			
<b>Fire</b>	Non-combustable when tested to BS476: Part 3. 2004 (spread of flame and fire prevention). SAA Classification			
<b>Maximum Pitch</b>	60°			
<b>Minimum Pitch</b>	17.5° (100mm headlap) normal exposure, (125mm headlap) severe exposure 22.5° (75mm headlap) normal exposure, (100mm headlap) severe exposure For rafters in excess of 8m please consult Russell Technical Department			
<b>Headlap (minimum)</b>	75mm			
<b>Gauge (maximum)</b>	343mm			
<b>Covering Width</b>	300mm			
<b>Covering Capacity</b>	75mm headlap - 9.7 tiles/m <sup>2</sup> 100mm headlap - 10.5 tiles/m <sup>2</sup> 125mm headlap - 11.4 tiles/m <sup>2</sup>			
<b>Weight of Tiling</b>	75mm headlap - 45kg/m <sup>2</sup> 100mm headlap - 48kg/m <sup>2</sup> 125mm headlap - 52kg/m <sup>2</sup>			
<b>Batten Size (minimum)</b>	50 x 25mm (for rafters not exceeding 600mm c/c)			
<b>Battens Required</b>	343mm gauge - 2.9m/m <sup>2</sup> 318mm gauge - 3.1m/m <sup>2</sup>			
<b>Ridge</b>	Universal Angle, Multi, Half Round RussFast Ridge 5m			
<b>Eave</b>	Standard tile Eaves Vent System 6m			
<b>Verge</b>	1/2 tile in alternate courses with Natural Range Dry Verge or 150mm wide fibre reinforced cement strip to provide 30-60mm overhang			
<b>Hip</b>	Universal Angle, Multi, Third Round RussFast Hip 5m			
<b>Valley</b>	Dry Fix Valley (70mm components) or lead valley in accordance with LSA guidelines			
<b>Roof Vents</b>	Moray RussVent or Moray Vent Tile			
<b>Top Abutment</b>	Top abutment apron flashing or 3m abutment Vent System and separate apron flashing			
<b>Side Abutment</b>	Side abutment step and cover flashing with secret gutter or continuous side abutment flashing with secret gutter			
<b>Tile Fixings</b>	40 x 3.35mm Aluminium Alloy Nails, smooth or ring shank dependant on Fixing Specification. For clips please see page 39			

## Polden



For colour availability please see our website

The Polden is a thinner leading edge riven finish flat tile with a hidden interlock and mock joint which gives the appearance of a slate when laid quarter-broken bonded.

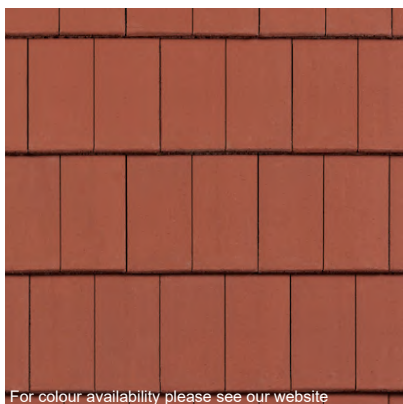


### Technical Data

Size	Weight	Thickness	Tiles per Pallet	Tiles Per Band
418 x 330mm	4.6kg	16mm	240	40
<b>Compliance</b>	Manufactured to the requirements of BS EN 490 and BS EN 491			
<b>Manufacture</b>	Produced by high pressure extrusion and compaction			
<b>Fire</b>	Non-combustable when tested to BS476: Part 3. 2004 (spread of flame and fire prevention). SAA Classification			
<b>Maximum Pitch</b>	60°			
<b>Minimum Pitch</b>	17.5° (100mm headlap) normal exposure, (125mm headlap) severe exposure 22.5° (75mm headlap) normal exposure, (100mm headlap) severe exposure For rafters in excess of 8m please consult Russell Technical Department			
<b>Headlap (minimum)</b>	75mm			
<b>Gauge (maximum)</b>	343mm			
<b>Covering Width</b>	300mm			
<b>Covering Capacity</b>	75mm headlap - 9.7 tiles/m <sup>2</sup> 100mm headlap - 10.5 tiles/m <sup>2</sup> 125mm headlap - 11.4 tiles/m <sup>2</sup>			
<b>Weight of Tiling</b>	75mm headlap - 45kg/m <sup>2</sup> 100mm headlap - 48kg/m <sup>2</sup> 125mm headlap - 52kg/m <sup>2</sup>			
<b>Batten Size (minimum)</b>	50 x 25mm (for rafters not exceeding 600mm c/c)			
<b>Battens Required</b>	343mm gauge - 2.9m/m <sup>2</sup> 318mm gauge - 3.1m/m <sup>2</sup>			
<b>Ridge</b>	Universal Angle, Multi, Half Round RussFast Ridge 5m			
<b>Eave</b>	Standard tile Eaves Vent System 6m			
<b>Verge</b>	1/4 or 3/4 tile in alternate courses with Natural Range Dry Verge or 150mm wide fibre reinforced cement strip to provide 30-60mm overhang			
<b>Hip</b>	Universal Angle, Multi, Third Round RussFast Hip 5m			
<b>Valley</b>	Dry Fix Valley (70mm components) or lead valley in accordance with LSA guidelines			
<b>Roof Vents</b>	Polden RussVent or Polden Vent Tile			
<b>Top Abutment</b>	Top abutment apron flashing or 3m abutment Vent System and separate apron flashing			
<b>Side Abutment</b>	Side abutment step and cover flashing with secret gutter or continuous side abutment flashing with secret gutter			
<b>Tile Fixings</b>	40 x 3.35mm Aluminium Alloy Nails, smooth or ring shank dependant on Fixing Specification. For clips please see page 39			



## Bute



The Bute is a thinner leading edge flat tile with a hidden interlock which when laid at a headlap of 145mm or 165mm gives the appearance of a small format tile or traditional plain tile.



For colour availability please see our website

### Technical Data

Size	Weight	Thickness	Tiles per Pallet	Tiles Per Band
418 x 330mm	4.6kg	16mm	240	40
Compliance	Manufactured to the requirements of BS EN 490 and BS EN 491			
Manufacture	Produced by high pressure extrusion and compaction			
Fire	Non-combustable when tested to BS476: Part 3. 2004 (spread of flame and fire prevention). SAA Classification			
Maximum Pitch	60°			
Minimum Pitch	17.5° For rafters in excess of 8m please consult Russell Technical Department			
Headlap (minimum)	145mm or 165mm			
Gauge	273mm or 253mm			
Covering Width	300mm			
Covering Capacity	145mm headlap - 12.2 tiles/m <sup>2</sup> 165mm headlap - 13.2 tiles/m <sup>2</sup>			
Weight of Tiling	145mm headlap - 56kg/m <sup>2</sup> 165mm headlap - 61kg/m <sup>2</sup>			
Batten Size (minimum)	50 x 25mm (for rafters not exceeding 600mm c/c)			
Battens Required	273mm gauge - 3.7m/m <sup>2</sup> 253mm gauge - 4.0m/m <sup>2</sup>			
Ridge	Universal Angle, Multi, Half Round RussFast Ridge 5m			
Eave	Standard tile Eaves Vent System 6m			
Verge	1/4 or 3/4 tile in alternate courses with Natural Range Dry Verge (Dry Verge System to be used at maximum headlap of 145mm) or 150mm wide fibre reinforced cement strip to provide 30-60mm overhang			
Hip	Universal Angle, Multi, Third Round RussFast Hip 5m			
Valley	Dry Fix Valley (70mm components) or lead valley in accordance with LSA guidelines			
Roof Vents	Bute Vent Tile (to be used at a maximum headlap of 145mm)			
Top Abutment	Top abutment apron flashing or 3m abutment Vent System and separate apron flashing			
Side Abutment	Side abutment step and cover flashing with secret gutter or continuous side abutment flashing with secret gutter			
Tile Fixings	40 x 3.35mm Aluminium Alloy Nails, smooth or ring shank dependant on Fixing Specification. For clips please see page 39			

# Commercial Range

Russell Commercial Range tiles are traditional sized interlocking tiles in a variety of profiles which provide a cost effective roofing solution

Grampian 11

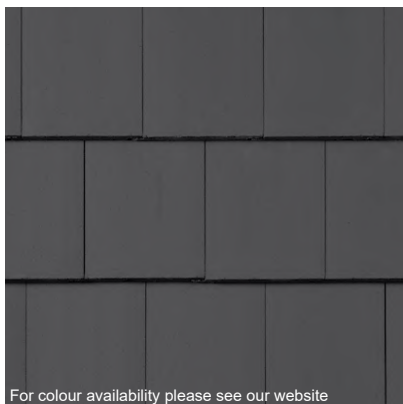
Highland 12

Double Roman 13

Pennine 14



# Grampian



The Grampian tile is a standard flat interlocking roof tile laid half-broken bonded. It provides the traditional appearance of slate tiles with the security of an interlocking design.

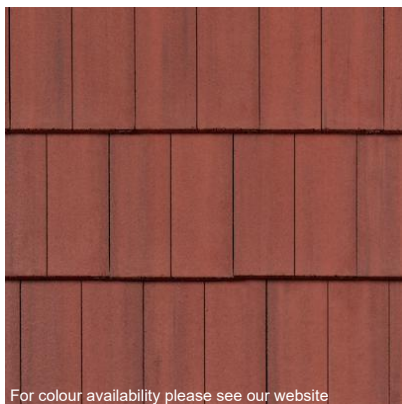


For colour availability please see our website

## Technical Data

Size	Weight	Thickness	Tiles per Pallet	Tiles Per Band
418 x 330mm	5.4kg	30mm	192	32
<b>Compliance</b>	Manufactured to the requirements of BS EN 490 and BS EN 491			
<b>Manufacture</b>	Produced by high pressure extrusion and compaction			
<b>Fire</b>	Non-combustable when tested to BS476: Part 3. 2004 (spread of flame and fire prevention). SAA Classification			
<b>Maximum Pitch</b>	60°			
<b>Minimum Pitch</b>	17.5° (100mm headlap) 22.5° (75mm headlap)			
<b>Headlap (minimum)</b>	75mm			
<b>Gauge (maximum)</b>	343mm			
<b>Covering Width</b>	298mm			
<b>Covering Capacity</b>	75mm headlap - 9.8 tiles/m <sup>2</sup> 100mm headlap - 10.6 tiles/m <sup>2</sup> 125mm headlap - 11.4 tiles/m <sup>2</sup>			
<b>Weight of Tiling</b>	75mm headlap - 53kg/m <sup>2</sup> 100mm headlap - 58kg/m <sup>2</sup> 125mm headlap - 63kg/m <sup>2</sup>			
<b>Batten Size (minimum)</b>	50 x 25mm (for rafters not exceeding 600mm c/c)			
<b>Battens Required</b>	343mm gauge - 2.9m/m <sup>2</sup> 318mm gauge - 3.1m/m <sup>2</sup>			
<b>Ridge</b>	Universal Angle, Multi, Half Round RussFast Ridge 5m			
<b>Eave</b>	Standard tile Eaves Vent System 6m			
<b>Verge</b>	1/2 tile in alternate courses with Commercial Range Dry Verge or 150mm wide fibre reinforced cement strip to provide 30-60mm overhang			
<b>Hip</b>	Universal Angle, Multi, Third Round RussFast Hip 5m			
<b>Valley</b>	Dry Fix Valley (110mm components) or lead valley in accordance with LSA guidelines			
<b>Roof Vents</b>	Grampian RussVent or Grampian Vent Tile			
<b>Top Abutment</b>	Top abutment apron flashing or 3m abutment Vent System and separate apron flashing			
<b>Side Abutment</b>	Side abutment step and cover flashing with secret gutter or continuous side abutment flashing with secret gutter			
<b>Tile Fixings</b>	50 x 3.35mm Aluminium Alloy Nails, smooth or ring shank dependant on Fixing Specification. For clips please see page 39			

# Highland



The Highland is a traditional flat roof tile with a mock joint, which gives the appearance of small slates or tiles when they are laid broken bonded.

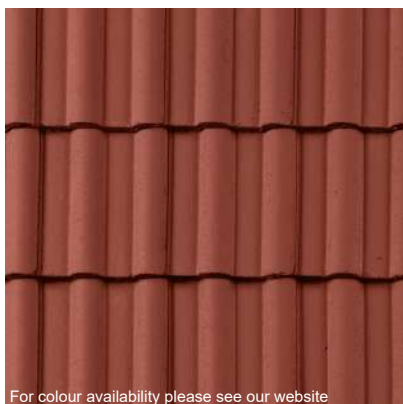


For colour availability please see our website

## Technical Data

Size	Weight	Thickness	Tiles per Pallet	Tiles Per Band
418 x 330mm	5.4kg	30mm	192	32
<b>Compliance</b>	Manufactured to the requirements of BS EN 490 and BS EN 491			
<b>Manufacture</b>	Produced by high pressure extrusion and compaction			
<b>Fire</b>	Non-combustable when tested to BS476: Part 3. 2004 (spread of flame and fire prevention). SAA Classification			
<b>Maximum Pitch</b>	60°			
<b>Minimum Pitch</b>	17.5° (100mm headlap) 22.5° (75mm headlap)			
<b>Headlap (minimum)</b>	75mm			
<b>Gauge (maximum)</b>	343mm			
<b>Covering Width</b>	298mm			
<b>Covering Capacity</b>	75mm headlap - 9.8 tiles/m <sup>2</sup> 100mm headlap - 10.6 tiles/m <sup>2</sup> 125mm headlap - 11.4 tiles/m <sup>2</sup>			
<b>Weight of Tiling</b>	75mm headlap - 53kg/m <sup>2</sup> 100mm headlap - 58kg/m <sup>2</sup> 125mm headlap - 63kg/m <sup>2</sup>			
<b>Batten Size (minimum)</b>	50 x 25mm (for rafters not exceeding 600mm c/c)			
<b>Battens Required</b>	343mm gauge - 2.9m/m <sup>2</sup> 318mm gauge - 3.1m/m <sup>2</sup>			
<b>Ridge</b>	Universal Angle, Multi, Half Round RussFast Ridge 5m			
<b>Eave</b>	Standard tile Eaves Vent System 6m			
<b>Verge</b>	1/4 or 3/4 tile in alternate courses with Commercial Range Dry Verge or 150mm wide fibre reinforced cement strip to provide 30-60mm overhang			
<b>Hip</b>	Universal Angle, Multi, Third Round RussFast Hip 5m			
<b>Valley</b>	Dry Fix Valley (110mm components) or lead valley in accordance with LSA guidelines			
<b>Roof Vents</b>	Highland Vent Tile or Highland RussVent			
<b>Top Abutment</b>	Top abutment apron flashing or 3m abutment Vent System and separate apron flashing			
<b>Side Abutment</b>	Side abutment step and cover flashing with secret gutter or continuous side abutment flashing with secret gutter			
<b>Tile Fixings</b>	50 x 3.35mm Aluminium Alloy Nails, smooth or ring shank dependant on Fixing Specification. For clips please see page 39			

# Double Roman



The Double Roman is a standard profiled roof tile with a small round roll. This classic design is laid straight bond and lends itself to both traditional and contemporary roof styles.

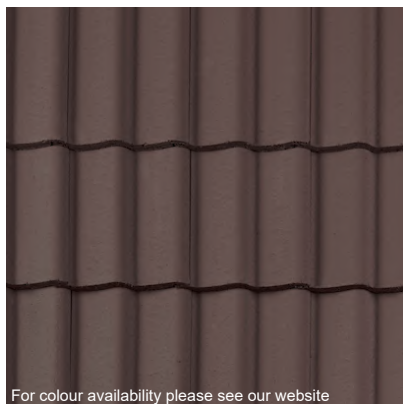


For colour availability please see our website

## Technical Data

Size	Weight	Thickness	Tiles per Pallet	Tiles Per Band
418 x 330mm	5.0kg	30mm	192	32
Compliance	Manufactured to the requirements of BS EN 490 and BS EN 491			
Manufacture	Produced by high pressure extrusion and compaction			
Fire	Non-combustable when tested to BS476: Part 3. 2004 (spread of flame and fire prevention). SAA Classification			
Maximum Pitch	60°			
Minimum Pitch	22.5° (75mm headlap)			
Headlap (minimum)	75mm			
Gauge (maximum)	343mm			
Covering Width	298mm			
Covering Capacity	75mm headlap - 9.8 tiles/m <sup>2</sup> 100mm headlap - 10.6 tiles/m <sup>2</sup>			
Weight of Tiling	75mm headlap - 49kg/m <sup>2</sup> 100mm headlap - 53kg/m <sup>2</sup>			
Batten Size (minimum)	50 x 25mm (for rafters not exceeding 600mm c/c)			
Battens Required	343mm gauge - 2.9m/m <sup>2</sup> 318mm gauge - 3.1m/m <sup>2</sup>			
Ridge	Universal Angle, Multi, Half Round RussFast Ridge 5m			
Eave	Standard tile Eaves Vent System 6m			
Verge	Standard tile in alternate courses with Commercial Range Dry Verge or 150mm wide fibre reinforced cement strip to provide 30-60mm overhang			
Hip	Universal Angle, Multi, Third Round RussFast Hip 5m			
Valley	Dry Fix Valley (110mm components) or lead valley in accordance with LSA guidelines			
Roof Vents	Double Roman RussVent or Double Roman Vent Tile			
Top Abutment	Top abutment apron flashing or 3m Abutment Vent System and separate apron flashing			
Side Abutment	Side cover flashing with lead soaker or cover flashing with secret gutter (severe exposed locations)			
Tile Fixings	40 x 3.35mm Aluminium Alloy Nails, smooth or ring shank dependant on Fixing Specification. For clips please see page 39			

# Pennine



For colour availability please see our website

The Pennine tile is a standard profiled roof tile with a subtle soft roll. This classic double pantile design, which is laid straight bond, lends itself to both traditional and contemporary styles.



## Technical Data

Size	Weight	Thickness	Tiles per Pallet	Tiles Per Band
418 x 330mm	4.8kg	30mm	192	32
Compliance	Manufactured to the requirements of BS EN 490 and BS EN 491			
Manufacture	Produced by high pressure extrusion and compaction			
Fire	Non-combustable when tested to BS476: Part 3. 2004 (spread of flame and fire prevention). SAA Classification			
Maximum Pitch	60°			
Minimum Pitch	22.5° (75mm headlap)			
Headlap (minimum)	75mm			
Gauge (maximum)	343mm			
Covering Width	298mm			
Covering Capacity	75mm headlap - 9.8 tiles/m <sup>2</sup> 100mm headlap - 10.6 tiles/m <sup>2</sup>			
Weight of Tiling	75mm headlap - 47kg/m <sup>2</sup> 100mm headlap - 51kg/m <sup>2</sup>			
Batten Size (minimum)	50 x 25mm (for rafters not exceeding 600mm c/c)			
Battens Required	343mm gauge - 2.9m/m <sup>2</sup> 318mm gauge - 3.1m/m <sup>2</sup>			
Ridge	Universal Angle, Multi, Half Round RussFast Ridge 5m			
Eave	Standard tile Eaves Vent System 6m			
Verge	Standard tile with Commercial Range Dry Verge or 150mm wide fibre reinforced cement strip to provide 30-60mm overhang			
Hip	Universal Angle, Multi, Third Round RussFast Hip 5m			
Valley	Dry Fix Valley (110mm components) or lead valley in accordance with LSA guidelines			
Roof Vents	Pennine RussVent or Pennine Vent Tile			
Top Abutment	Top abutment apron flashing or 3m Abutment Vent System and separate apron flashing			
Side Abutment	Side cover flashing with lead soaker or cover flashing with secret gutter (severe exposed locations)			
Tile Fixings	40 x 3.35mm Aluminium Alloy Nails, smooth or ring shank dependant on Fixing Specification. For clips please see page 39			

# Regency Range

The Regency Range includes the Traditional Plain Tile in a range of natural colours. We also offer a variety of Regency Range Blends to give an even more authentic look to a roof. They are created using a mix of carefully selected colours to give an overall desired effect

Traditional Plain Tile 16

Regency Range Blends 17



# Traditional Plain Tile



For colour availability please see our website

The Plain Tile has the appearance of a traditional clay tile but the strength and durability of a concrete tile. Ideal for historic restorations and new projects where subtle aesthetic appearance and cost efficiency are a priority.



## Technical Data

Size	Weight	Thickness	Tiles per Pallet	Tiles Per Band
267mm x 165mm	1.3kg	12mm	900	10
Compliance	Manufactured to the requirements of BS EN 490 and BS EN 491			
Manufacture	Produced by high pressure extrusion and compaction			
Fire	Non-combustable when tested to BS476: Part 3. 2004 (spread of flame and fire prevention). SAA Classification			
Maximum Pitch	90°			
Minimum Pitch	35°			
Headlap (minimum)	65mm 35mm (vertical cladding only)			
Gauge (maximum)	100mm 115mm (vertical cladding only)			
Covering Width	165mm			
Covering Capacity	100mm gauge - 60 tiles/m <sup>2</sup> 115mm gauge - 52 tiles/m <sup>2</sup> (vertical cladding only)			
Weight of Tiling	100mm gauge - 78kg/m <sup>2</sup>			
Batten Size (minimum)	38 x 25mm (for rafters not exceeding 600mm c/c)			
Battens Required	100mm gauge - 10m/m <sup>2</sup> 115mm gauge - 8.7m/m <sup>2</sup>			
Ridge	Universal Angle, Multi, Half Round RussFast Ridge 5m			
Eave	Eaves/Top tile under-course Eaves Vent System 6m			
Verge	Plain Tile and Half in alternate courses with 150mm wide fibre reinforced cement strip to provide 38-50mm overhang or Plain Tile Cloak Verge			
Hip	Universal Angle, Multi, Third Round, Bonnet Hip, Arris Hip Baby Ridge Half Round, Baby Ridge Uni Angle (mortar bed only) RussFast Hip 5m			
Valley	Plain Tile Valley, Dry Fix Valley or lead valley in accordance with LSA guidelines			
Roof Vents	Plain Tile Vent			
Top Abutment	Top abutment apron flashing or 3m Abutment Vent System and separate apron flashing			
Side Abutment	Side cover flashing with lead soaker			
Tile Fixings	40mm x 2.65mm Aluminium Alloy Nails, smooth or ring shank dependant on Fixing Specification			



## Regency Range Blends

The Regency Range Blends are a mixture of Traditional Plain Tile colours on one roof which when laid at random give a natural clay appearance. Russell Roof Tiles have developed a number of blends over the last few years to either match in with existing roofs or to develop a new natural look.



# Regency Range Blends



# Roof Accessories

Ridge Tiles 20

Crested Ridge and Finial Tiles 22

Plain Tile Accessories 23



# Ridge Tiles



**Uni Angle Ridge**

457mm x 250mm

**Maximum Pitch**

45°

**Per Pallet**   **Per Band**

64

4



**Uni Angle Ridge Block End**

457mm x 250mm

**Maximum Pitch**

45°

**Per Pallet**

18



**Half Round Ridge**

457mm x 250mm

**Maximum Pitch**

45°

**Per Pallet**   **Per Band**

96

4



**Half Round Ridge Block End**

457mm x 250mm

**Maximum Pitch**

45°

**Per Pallet**

18



**Multi Ridge**

457mm x 250mm

**Maximum Pitch**

45°

**Per Pallet**   **Per Band**

128

4



**Multi Ridge Block End**

457mm x 250mm

**Maximum Pitch**

45°

**Per Pallet**

18

# Ridge Tiles



**Mono Ridge**

457mm x 300mm x 150mm

**Maximum Pitch**

35°

**Per Pallet**

64



**Mono Ridge Block End Left Hand**

457mm x 300mm x 150mm

**Maximum Pitch**

35°



**Mono Ridge Block End Right Hand**

457mm x 300mm x 150mm

**Maximum Pitch**

35°



**Third Round Ridge**

457mm x 250mm

**Maximum Pitch**

Suitable for use on hips only

**Per Pallet Per Band**

128

4



**Third Round Hip End**

457mm x 250mm

**Per Pallet**

32



**Multi Hip End**

457mm x 250mm

**Per Pallet**

32



**Uni Angle Hip End**

457mm x 250mm

**Per Pallet**

32

# Plain Tile Accessories



Half Round Baby Ridge



Uni Angle Baby Ridge



Plain Tile Cloak Verge



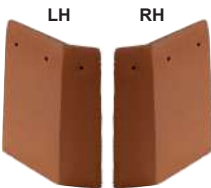
Bonnet Hip



Arris Hip 90°



Arris Hip 135°



External Angle 135°



External Angle 90°



Plain Tile Valley



Plain Tile Vent



Plain Tile and Half  
Per Pallet: 540



Plain Eaves/Top Tile  
Per Pallet: 1200

# Plain Tile Accessories



Half Round Baby Ridge



Uni Angle Baby Ridge



Plain Tile Cloak Verge



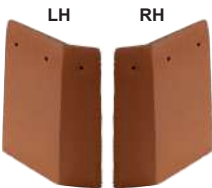
Bonnet Hip



Arris Hip 90°



Arris Hip 135°



External Angle 135°



External Angle 90°



Plain Tile Valley



Plain Tile Vent



Plain Tile and Half  
Per Pallet: 540



Plain Eaves/Top Tile  
Per Pallet: 1200

# Dry Fix Systems

Russell Roof Tiles provide a full range of dry fix systems to accompany all of our tile ranges

RussFast Ridge 5m 25

RussFast Hip 5m 26

RussFast Mono Ridge 5m 27

Natural Range Dry Verge System 28

Commercial Range Dry Verge System 29

Dry Fix Valley 3m 30





# RussFast Ridge 5m



RussFast Dry Ridge is a robust 5 metre dry fix system designed to meet BS 5534 and BS 8612 and provides a secure mechanical fixing of the ridge tiles. It has dedicated fit components which give a high performance in all UK locations and aesthetically it gives a neat solution. The system, when fitted with the ventilated roll, provides the equivalent of a continuous 5mm air gap.

### Compliance

Manufactured in accordance with the requirements of BS 5534 and BS 8612.

### Compatibility

RussFast Ridge 5m is suitable for use with our full roof tile range and is fitted with our Multi, Half Round and Universal Angle ridge profiles.

### Boxes per pallet

81

### Box Components



**RussFast Ridge Roll 5m**  
Ventilated or Unventilated  
x1



**RussFast Ridge Union**  
(Multi, Half Round or Uni Angle)  
x10



**RussFast Union Clip**  
x10



**Ridge Batten Connector**  
x10



**100mm x 4.5mm S/S Screw**  
x10

# RussFast Hip 5m



RussFast Hip 5m is a robust 5 metre dry fix system designed to meet BS 5534 and BS 8612 and provides a secure mechanical fixing of the hip tiles. It has dedicated fit components which give a high performance in all UK locations and aesthetically it gives an attractive neat solution.

### Compliance

Manufactured in accordance with the requirements of BS 5534 and BS 8612.

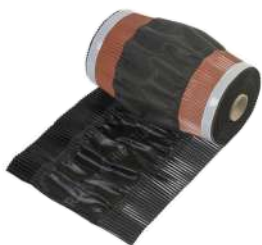
### Compatibility

RussFast Hip 5m is suitable for use with our full roof tile range and is fitted with our Multi, Third Round and Universal Angle ridge profiles

### Boxes per pallet

81

### Box Components



RussFast Hip Roll 5m unventilated  
x1



RussFast Hip Union  
(Multi, Third Round or Uni Angle)  
x10



RussFast Union Clip  
x10



Hip Batten Connector  
x10



125mm x 3.85mm S/S Screw  
x10

*Hip Strips (1.6m) are available separately  
Installation instructions are available on our website*

# RussFast Mono Ridge 5m



RussFast Mono Ridge is a simple and robust 5 metre dry fix system designed to meet BS 5534 and BS 8612 and is used in conjunction with the mechanical fixing of the mono ridge tiles themselves. It gives an attractive and neat solution requiring no maintenance. The system, when fitted with the ventilated roll, provides the equivalent of a continuous 5mm air gap.

### Compliance

Manufactured in accordance with the requirements of BS 5534 and BS 8612.

### Compatibility

RussFast Mono Ridge 5m is suitable for use with our full tile range and is a dedicated fit with Russell Mono Ridge Tiles. The system is suitable for roof pitches up to 35°.

### Boxes per pallet

81

### Box Components



**RussFast Ridge Roll 5m**  
Ventilated or Unventilated

x1



**RussFast Mono Ridge Union**  
x10

# Natural Range Dry Verge System



The Russell Natural Range Dry Verge System is a high quality, purpose designed and mechanically fixed mortarless verge system which requires no maintenance.

### Compliance

The Dry Verge System when fixed with the Russell Drive Screw Nail ensures compliance with BS 8612: Dry fixed ridge, hip, and verge systems for slating and tiling and BS 5534: Code of practice for slating and tiling.

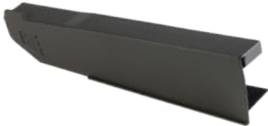
### Natural Range Dry Verge System

To fit the following tile profiles:

- Galloway
- Lothian
- Moray
- Polden
- Bute



Right Hand



Left Hand

Natural Range Dry Verge Unit



Russell Drive Screw Nail



Natural Range Ridge End Cap (Uni / Multi / Half Round)



Left Hand



Right Hand

Natural Range Eaves Stop End

- Please see our website for available colours
- All components sold separately
- Installation instructions are available on our website

# Commercial Range Dry Verge System



The Russell Commercial Range Dry Verge System is a high quality, purpose designed and mechanically fixed mortarless verge system which requires no maintenance.

### Compliance

The Dry Verge System when fixed with the Russell Drive Screw Nail ensures compliance with BS 8612: Dry fixed ridge, hip, and verge systems for slating and tiling and BS 5534: Code of practice for slating and tiling.

### Commercial Range Dry Verge System

To fit the following tile profiles:

- Grampian
- Highland
- Double Roman
- Pennine



Right Hand



Left Hand

Commercial Range  
Dry Verge Unit



Russell Drive  
Screw Nail



Commercial Range  
Ridge End Cap  
(Uni / Multi / Half Round)



Left Hand



Right Hand

Commercial Range  
Eaves Stop End

- Please see our website for available colours
- All components sold separately
- Installation instructions are available on our website

# Dry Fix Valley 3m



The Dry Fix Valley 3m system provides a maintenance free means of discharging water from the roof and is suitable for use with interlocking and profiled tiles. The product is supplied in 3m lengths and 2 heights; 70mm and 110mm dependant on the tile profile being used.

**Compliance**

Manufactured in accordance with the requirements of BS 5534

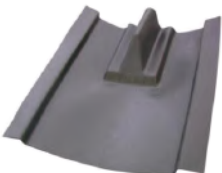
**Compatibility**

110mm centre upstand is compatible with Double Roman, Grampian, Highland, Pennine and Plain Tile profiles

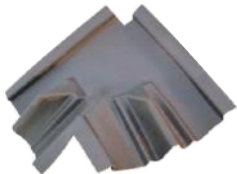
70mm centre upstand is compatible with Galloway, Lothian, Moray, Polden and Bute tile profiles.



**GRP Dry Fix Valley Trough 3m**  
70mm or 110mm upstand



**Eaves Closure Piece**  
70mm or 110mm



**Top Closure Piece 90°**  
70mm or 110mm

# Ventilation Products

Russell Roof Tiles offer a complete range of ventilation products and systems to suit all pitched roof types

Eaves Vent System 6m 32

Gas Vent Ridge 33

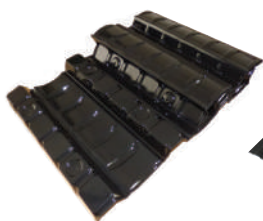
Vent Tile 34

RussVent 35

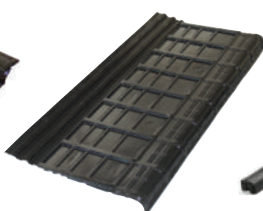
Abutment Vent System 3m 37



# Eaves Vent System 6m



**Roll Out Rafter Eave Vent**  
450mm width x 6m length



**Underlay Support Tray**  
x10



**Over Fascia Ventilator**  
10mm or 25mm x6

The Russell Eaves Vent System is a 3 part 6m ventilation pack which provides a practical, discreet and cost effective solution for roof ventilation requirements in eaves-to-ridge or eaves-to-eaves situations and it comprises:

### Roll Out Rafter Eave Vent

The Roll Out Rafter Eave Vent is suitable for 400mm, 450mm and 600mm rafter centres and is suitable for new-build or refurbishment projects or where rafter centres are not constant or unknown. Used in conjunction with the Over Fascia Ventilator, it ensures the requirements of either a continuous 10mm or 25mm gap are maintained into the roof space.

### Underlay Support Tray

It provides a drip edge into the gutter and is to prevent the roofing underlay from sagging and ponding behind the fascia.

### Over Fascia Ventilator

There are two options providing the equivalent of a continuous 10mm or 25mm gap they are both designed to be fitted on the top of the fascia board. The Over Fascia Ventilator discreetly ensures a positive passage of airflow into the roof space between the roofing underlay and the fascia board.

**The system is also available as a 2 part pack which comprises:  
Underlay Support Tray (x10) and Over Fascia Ventilator (x6)**

Both systems prevent the ingress of birds, vermin and insects and meet the requirements of NHBC guidelines. When using profiled tiles a Bird Comb Filler is required and is available separately in 1m lengths.



# Gas Vent Ridge



The Russell Gas Vent Ridge is a low resistance terminal which is for use on duo pitched roofs. It is manufactured in Half Round and Universal Angle ridge profiles, and is compatible with the RussFast Dry Ridge System or wet bedded ridge.

### Compliance

All Russell Roof Tile concrete fittings are manufactured in accordance with the requirements of BS EN 490 "Concrete Roof Tiles and Fittings-Product specifications" and BS EN 491 "Concrete Roof Tiles and Fitting-Test Methods".

### Length

457mm

### Width

250mm

### Profiles Available

Uni Angle, Half Round

### Maximum Roof Pitch

45°

### Free Ventilation Area

12,170mm<sup>2</sup>

### Extension Box

Available Separately



*An R Type adaptor for connection is available from plumbing and gas merchants*

# Vent Tile



**Vent Tile**



**Plain Tile Vent**



**Flexi Pipe**  
110mm - Interlocking Tile



**Flexi Pipe**  
75mm - Plain Tile

*All components available separately*

The Russell Vent Tile is suitable for roofspace ventilation, mechanical extract systems and soil vent pipes. It is fixed in the same manner as standard tiles.

### Certification

All Russell Roof Tile concrete fittings are manufactured in accordance with the requirements of BS EN 490 "Concrete Roof Tiles and Fittings-Product specifications" and BS EN 491 "Concrete Roof Tiles and Fitting-Test Methods".

### Profiles Available

All tile profiles

	Interlocking Tile	Plain Tile
Minimum Tile Pitch	As per tile profile	35°
Ventilation Area	7,000mm <sup>2</sup>	3,000mm <sup>2</sup>
Recommended Spacing	5mm gap - 1.4m centres 10mm gap - 0.7m centres	5mm gap - 0.6m centres 10mm gap - 0.3m centres

- PVC-u underlay Seal is available separately on request
- Interlocking profiles are fitted with a 110mm diameter Flexi Pipe
- Plain Tile profile is fitted with 75mm diameter Flexi Pipe
- Not suitable for hot exhaust gases

# RussVent - Concrete Profiles



RussVent - Concrete Interlocking Profile



RussVent Adaptor



110mm Flexi Pipe

*All components available separately*

The RussVent tile ventilator is designed to offer architects and specifiers all the practicalities of roof ventilation with the aesthetics and ease of installation of a normal tile.

RussVent is designed for ventilation of the roof space. It can also be used as a soil vent pipe (SVP) or mechanical extract terminal.

### Certification

All Russell Roof Tile concrete fittings are manufactured in accordance with the requirements of BS EN 490 "Concrete Roof Tiles and Fittings-Product specifications" and BS EN 491 "Concrete Roof Tiles and Fitting-Test Methods".

### Interlocking Tile - Concrete Profiles

Minimum Pitch: 22.5°

Actual Net. Free Air-Flow: 10,000mm<sup>2</sup>

2.0 Metre c/c spacing = 5,000mm<sup>2</sup>

1.0 Metre c/c spacing = 10,000mm<sup>2</sup>

### Air flow resistance when used as SVP/Extract Terminal

54m <sup>3</sup> /Hr	15l / sec	10 Pa
108m <sup>3</sup> /Hr	30l / sec	42 Pa
216m <sup>3</sup> /Hr	60l / sec	162 Pa

### RussVent - concrete interlocking tile profiles

- Galloway
- Lothian
- Moray
- Polden
- Grampian
- Highland

- PVC-u Underlay Seal is available separately on request
- Not suitable for hot exhaust gases

# RussVent - Plastic Profiles



**RussVent - Plastic Interlocking Profile**



**RussVent Adaptor**



**RussVent - Plain Tile**



**110mm Flexi Pipe**

*All components available separately*

**Interlocking Tile - Plastic Profiles**

Minimum Pitch: 22.5°  
 Actual Net. Free Air-Flow: 10,000mm<sup>2</sup>  
 2.0 Metre c/c spacing = 5,000mm<sup>2</sup>  
 1.0 Metre c/c spacing = 10,000mm<sup>2</sup>

**Plain Tile**

Minimum Pitch: 35°  
 Actual Net. Free Air-Flow: 10,000mm<sup>2</sup>  
 1.5 Metre c/c spacing = 5,000mm<sup>2</sup>  
 0.75 Metre c/c spacing = 10,000mm<sup>2</sup>

**Air flow resistance when used as SVP/Extract Terminal**

54m <sup>3</sup> /Hr	15l / sec	10 Pa
108m <sup>3</sup> /Hr	30l / sec	42 Pa
216m <sup>3</sup> /Hr	60l / sec	162 Pa

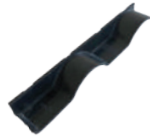
**RussVent - Interlocking Plastic Tile Profiles**

- Double Roman
  - Pennine
  - Plain Tile
- PVC-u Underlay Seal is available separately on request  
 • Not suitable for hot exhaust gases

# Abutment Vent System 3m



**Abutment Vent**  
x3



**Profile Filler (Pennine and Double Roman tile profiles only)**  
*Available Separately*

The Russell Abutment Ventilation System provides continuous high-level ventilation for lean-to roof construction. It is designed to meet the requirements of the building regulations, whilst being discrete and aesthetically pleasing. The system is suitable for use with all interlocking and plain tile profiles.

The system is made up of 1m length units has lead support straps to secure a code 4 lead apron flashing (not supplied).

**Minimum Roof Pitch**  
As per tile profile

**Net. Air Flow**  
5,000mm<sup>2</sup>, the equivalent of a continuous 5mm gap

# Tile Fixings

Tile Clips & Nails 39



## Tile Fixings

# Clips & Nails

The **Natural Range Tile / Eave Clip** is suitable for use with the Galloway, Lothian, Moray, Polden and Bute tile profiles.

The **Commercial Range Tile / Eave Clip** is suitable for use with the Double Roman, Grampian, Highland and Pennine tile profiles.

### Compliance

All tile clips conform with the requirements of BS 5534.



#### Natural Range Tile / Eave Clip

Used with a 65mm x 3.35mm aluminium alloy clout nail



#### Commercial Range Tile / Eave Clip

Used with a 65mm x 3.35mm aluminium alloy clout nail



#### Pennine / Double Roman Verge Clip



#### Natural Range Verge Clip



#### Grampian / Highland Verge Clip



#### Hip Clip

Tile Profile	Aluminium Alloy Clout Nail Size	Tile Clip	Aluminium Alloy Clout Clip Nail Size
Galloway	40 x 3.35mm	Natural Range	65 x 3.35mm
Lothian	40 x 3.35mm	Natural Range	65 x 3.35mm
Moray	40 x 3.35mm	Natural Range	65 x 3.35mm
Polden	40 x 3.35mm	Natural Range	65 x 3.35mm
Bute	40 x 3.35mm	Natural Range	65 x 3.35mm
Grampian	50 x 3.35mm	Com. Range	65 x 3.35mm
Highland	50 x 3.35mm	Com. Range	65 x 3.35mm
Pennine	40 x 3.35mm	Com. Range	65 x 3.35mm
Double Roman	40 x 3.35mm	Com. Range	65 x 3.35mm
Plain Tile	40 x 2.65mm	n/a	n/a

## Accreditations

Russell Roof Tiles holds a number of key accreditations which demonstrate our values of sustainability, quality and local community

### BES 6001 - Responsible Sourcing

Russell Roof Tiles takes its environmental responsibilities very seriously and is accredited with BES 6001: Issue 3 – the most recent version of the BRE Framework for the Responsible Sourcing of Construction Products.



### ISO 9001 - Quality Management

Russell Roof Tiles detailed Quality Control and Management Systems throughout the company have demonstrated that we achieve the standards necessary for ISO 9001 accreditation.



### ISO 14001 - Environmental Management

Russell Roof Tiles take every precaution possible to be an environmentally friendly company; from the manufacturing processes, packaging of products, transportation and finally the disposal of products.



### ISO 45001 - Health & Safety Management

Russell Roof Tiles has been audited and found to meet the requirements of standard ISO 45001:2018 Occupational Health and Safety Management System



### CE Marking

All our roof tiles carry the CE Mark to show the declaration of their performance



### Member of the RIBA CPD Providers Network

The RIBA CPD Providers Network consists of over 500 manufacturers and suppliers, training companies and advisory organisations, who provide RIBA-approved materials to architects and other specifiers.



To view all of our accreditation certificates and to learn more about how Russell Roof Tiles is committed to corporate social responsibility please visit our website [www.russellrooftiles.co.uk/accreditations](http://www.russellrooftiles.co.uk/accreditations)



# Customer Support

Our Customer Services team can be contacted by the following:

**Phone:** 01283 517070, opt. 1

**Email:** [salesenquiries@russellrooftiles.com](mailto:salesenquiries@russellrooftiles.com)

**Web:** [www.russellrooftiles.co.uk/sales-support](http://www.russellrooftiles.co.uk/sales-support)

Our dedicated team can provide information on:

- How to order
- Regional contact information
- Delivery Information
- Product availability
- Minimum order quantities

# Technical Services

Technical Support can be contacted by the following:

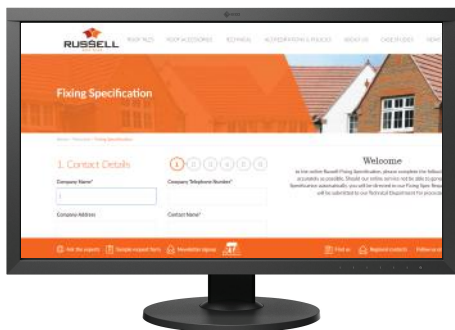
**Phone:** 01283 517070, opt. 3

**Email:** [technical@russellrooftiles.com](mailto:technical@russellrooftiles.com)

**Web:** [www.russellrooftiles.co.uk/ask-the-experts](http://www.russellrooftiles.co.uk/ask-the-experts)

Our technical services and information include:

- Fixing Specifications
- Technical Data Sheets
- Fixing Instructions
- Tile Estimates
- CAD Drawings
- NBS Specifications
- BIM
- Accreditation details
- Sustainability Overview



# Locations

### **Burton on Trent (Head Office)**

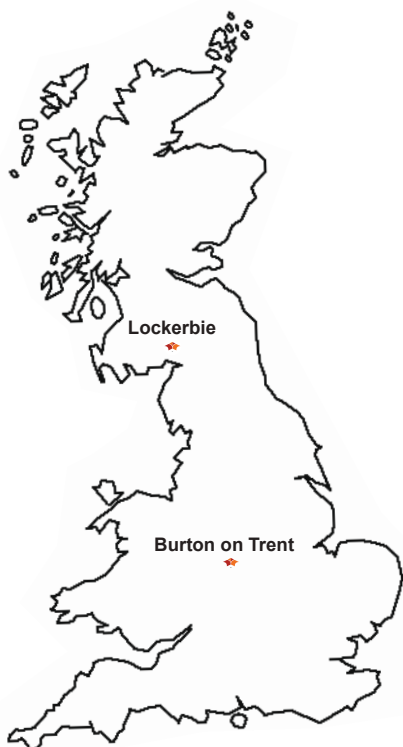
Russell Roof Tiles  
Nicolson Way  
Wellington Road  
Burton-on-Trent,  
Staffordshire  
DE14 2AW

### **Lockerbie**

Russell Roof Tiles  
Halleaths, Lochmaben  
Lockerbie  
Dumfriesshire  
DG11 1LR

### **Plastics**

Russell Roof Tiles Plastics  
Bushton Works, Wetmore Lane  
Burton-on-Trent  
Staffordshire  
DE14 1RH



# Customer Notice

Russell Roof Tiles policy is one of continual product development and therefore we reserve the right to alter product specifications without prior notice. Information contained within this document was accurate at the time of publication.

**For information regarding product colours and up to date product specifications please visit our website:**

**[www.russellrooftiles.co.uk](http://www.russellrooftiles.co.uk)**





**RUSSELL**  
ROOF TILES



Phone: 01283 517070  
Email: [salesenquiries@russellrooftiles.com](mailto:salesenquiries@russellrooftiles.com)

[www.russellrooftiles.co.uk](http://www.russellrooftiles.co.uk)

